

JSE Weekly Newsletter

August 17 - August 21

Traffic Reminders for 8/17 - 8/21

Increased traffic update:

- Beginning Monday, students in grades 4-7 start attending school every day. This change from an alternate day schedule will impact our traffic at JSE! During arrival and dismissal please be patient in the parent pick up line as everyone acclimates to these changes!

Cross Walks:

- All students, staff, and family members who are crossing from the parking lot must use the crosswalks at all times. There are two crosswalks located directly in front of each entrance at the front of the school.



Family Pickup Tags:

- To be as efficient as possible, always remember to put the Family Pickup Tag, where a staff member can easily see it as you drive through the pickup line each afternoon.
- JSE Family Pickup Tags are color-coded by grade level and have your child's name and classroom teacher's name.
- Remove your student's tag from the rearview mirror or dash once you have your student in the vehicle.

JSE Main Traffic Loop Reminders

- You will be ticketed for being on your cell phone if you are driving through the family drop-off or pickup line.
- You may not change lanes while in the pickup or drop off lanes.

JSE Arrival Procedures

Remember that things will look a little different as we begin this school year. Here is a quick review of our procedures.

TWO IMPORTANT REMINDERS:

- NO PARENTS OR FAMILY MEMBERS WILL BE ALLOWED IN THE BUILDING IN ORDER TO REDUCE INTERACTION.**
- THE BUILDING WILL OPEN AT 7:15 AM.**

Dropping Off BEFORE 7:25 AM

- Students may eat breakfast in the cafeteria.
- Students not eating breakfast will go to the gym and sit with their cohorts.

Dropping Off AFTER 7:25 AM

- Students dropped off after 7:25 AM will go directly to their classrooms, unless they need to eat breakfast.
- If students need to eat breakfast they may go to the cafeteria until 7:45 am.

Other Reminders

- Students will enter the school using the main entrance at JSE.
- All students will have their temperature checked.

JSE Dismissal Procedures

- Students will be dismissed at 2:50 pm.
- Family members that elect to park and walk up to pick up students will be directed to a holding area near the wooden fence. JSE staff will assist teachers and walk your student over to you. Family members and parents are not allowed to enter the student dismissal area.
- Please remain in your vehicle - the teachers and other JSE staff will bring your student to you.
- Please demonstrate patience with this dismissal process as it will improve with time and practice.

Kindergarten Information Arrival and Dismissal

Kindergarten Arrival and Dismissal Procedures August 10 - August 24

Arrival:

Your student will have his/her temperature taken at the entrance of the school.

Outside classroom doors open at 7:30 am.

Walk up to your student's outside classroom door.

Do not attempt to open the classroom door. Your student's teacher will open the door when the classroom is open.

Big hugs!

Exit through the gate on the Kindergarten playground.

****Adults are not permitted into the classroom.****

Dismissal:

Kindergarten students will be dismissed from their classroom between *2:25-2:40pm*.

Walk up to your student's classroom door.

Please do not come to the classroom door before: *2:25pm*

Do not attempt to open the classroom door. Your student's teacher will open the door when dismissal begins.

Have your orange car tag that will be provided to you by the classroom teacher.

Exit through the gate on the Kindergarten playground.

All Kindergarten students that are not picked up from the classroom will come outside at 2:45pm.

****Adults are not permitted into the classroom.****

See Below for Instructions for Kindergarten after August 24th:

Starting Monday, August 24th, Kindergarten students will be required to go through the car line for arrival. All students will have their temperature taken entering the building.

- If your student is eating breakfast in the cafeteria, your student will need to go through the car line for arrival and will be directed to the cafeteria.
- If your student is not eating breakfast, the building doors open at 7:15am and your student will be directed to the gym and then to class.
- If your student is a bus rider, please be on time at your designated bus stop.

Dismissal: August 24th and for the remainder of the 2020-2021 school year

Kindergarten students will be dismissed from their classroom at **2:35pm**.

Walk up to your student's classroom door.

Please do not come to the classroom door before: **2:35pm**

Do not attempt to open the classroom door. Your student's teacher will open the door when dismissal begins.

Have your orange car tag that will be provided to you by the classroom teacher.

Exit through the gate on the Kindergarten playground.

****Adults are not permitted into the classroom.****

**All Kindergarten students that are not picked up
from the classroom will come outside at 2:45pm.**

COVID-19 Notifications and Management Plan

Per the MCS COVID-19 Management Plan, the JSE community will be notified when a student or staff member tests positive for COVID-19, has been in direct contact with a COVID positive person, or developed an accumulation of symptoms.

Following the MCS COVID-19 Management Plan and our continued effort to keep every member of our JSE family healthy and safe, I want to reiterate a few of our health-related policies and procedures.

We request that you keep your child home from school if they have any of the following symptoms:

- fever,
- cough,
- fatigue,
- muscle or body aches,
- headache,
- sore throat,
- nausea or vomiting,
- loss of their sense of taste or smell
- diarrhea
- congestion or runny nose
- shortness of breath

We also request that you keep your child home:

- If they have been tested for COVID, and you have not yet received the results.
- If they have been in direct close contact with a COVID positive person.

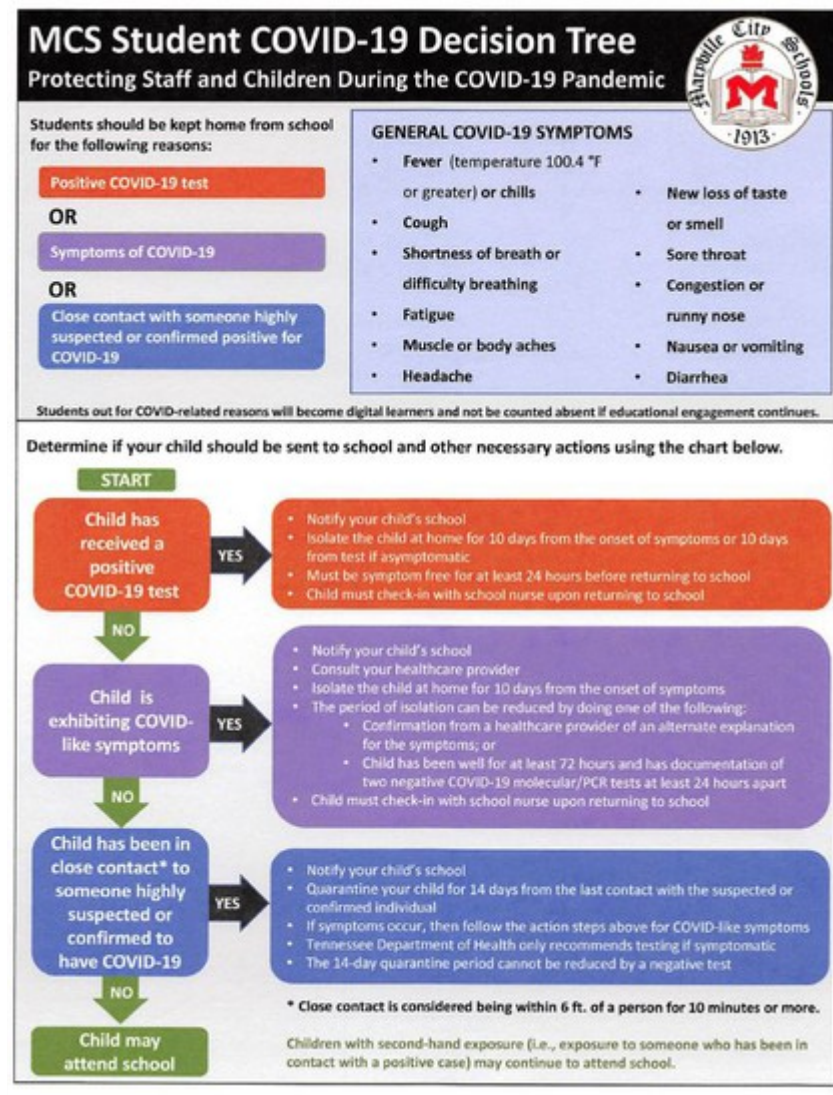
Mrs. Easterly and district leaders will work with local health officials regarding confirmed cases of COVID-19. Contact tracing and communication of any confirmed cases of COVID-19 will be managed on a case-by-case basis, in cooperation with local health authorities.

Students that are quarantined based on a close contact exposure will not be required to fulfill the re-entry conditions of students who are sent home and quarantined for a combination of symptoms. Students with symptoms or a positive COVID-19 test result will need to follow the re-entry plan before returning to school.

If you have any questions or concerns, please do not hesitate to contact Mrs. Easterly, the JSE Main Office, or the JSE school nurses.

The link to the MCS COVID-19 Management plan is below:

https://maryvilleschools-my.sharepoint.com/:b/g/personal/brandee_easterly_maryville-schools_org/EY6FyxvPa4dJthqr2PxuBSQB_6Ookn1WL0fSCAiLtIG5Q?e=JRXzBn



MCS Digital Learning

Maryville City Schools' goal is to provide a virtual learning program that matches the rigor of the traditional classroom. Case in point, our virtual learning program will look a lot different than what students received in the spring. We are proud of the instruction that students received last spring, but our aim is to push virtual learners even further in their virtual studies this year.

Our goal is to ensure that the quality of the virtual learning education mirrors that of what is occurring in the traditional classroom. We hope that it mirrors so closely, that when virtual learners return to traditional learning, they find that they haven't skipped a beat with their peers. Here are some important things to highlight about the Virtual Learning Program:

- The state requires us to provide 7 hours of instructional time to our 1st, 2nd, and 3rd-grade learners and 4.5 hours of instructional time to our Kindergarteners.
- Synchronous or asynchronous learning time both count as instructional time. Synchronous learning is online or distance education that happens in real-time, whereas asynchronous learning occurs without real-time interaction. Zoom is a great example of synchronous learning. A teacher providing a student with an activity to work on without live teacher support is an example of asynchronous learning.
- Maryville's Virtual Learning model will incorporate a blend of synchronous and asynchronous learning. Virtual learners will not be Zooming all day long. Virtual learners may Zoom with their teacher for a little while and then be asked to go work on an assignment on their own or with their guardian.
- Each Digital teacher will be creating their very own Digital Classroom schedule. Their schedules will require students to be on Zoom at specifically scheduled times throughout the day. Each virtual learner needs to be present for these scheduled times in order to be marked present on their attendance.
- Our digital teachers are in the process of calling parents to let them know that their child will be in their class. These digital teachers will be sharing with each parent when their class will be meeting for the first time. They also will be sharing their schedules with parents this week as well.
- MCS takes engagement in Virtual learning very seriously. If a student is not on pace in their virtual learning – they are not participating in online sessions, not completing or attempting assignments, a week behind in work completion, not responding to teacher communications – then the following steps will be initiated.
 1. Parent/Teacher/Student Conference – digitally or on the phone – to determine areas of need.
 2. Should dis-engagement continue, then the Parent and Teacher will develop a two-week action plan for the student identifying the services necessary for the student to be successful. This plan will include weekly face to face sessions in the Digital Learning Lab for the specified course(s).
 3. Should a student continue to be off track in the course even with an action plan, withdrawal from Digital Learning will be initiated, and the student will return to face to face instruction at school or secure a different school option outside MCS.

Please follow the link below to the Maryville City Schools Digital Learning Guidelines.

<https://resources.finalsite.net/images/v1594223159/maryvilleschoolsorg/xo9zv3e3kc7jrzaftpj/MCSDigitalLearningGuidelines-Student-8July2020.pdf>

Rebel Run - Saturday, August 22

The Rebel Run is a fundraising event hosted by the Maryville City Schools Foundation which helps provide for the ongoing enrichment of educational programs for all students in Maryville City Schools. The Rebel Run 10K, 5K, and 1 Mile Run/Walk is in its 9th year. The event will look different this year due to COVID 19 and for the safety of our participants, staff, volunteers, and spectators. The event will be a combination in person and virtual event. The 10K and 5K events are planned for in person with a limited number of registrants for each event. You can sign up or find additional details using the link below



runsignup.com

The BEST GUIDES get you LOST in the moment

Never miss a chance for a little change of pace. Join Cub Scouts and learn what it means to blaze new trails.
JOIN TODAY AT BEASCOUT.ORG

SCOUT ME IN

Pack 87 Meets Tuesdays, 6:30PM at Broadway United Methodist Church, Maryville, TN
Visit <https://maryville87.mypack.us>

Upcoming Color Days And Menus				
Monday August 17	Tuesday August 18	Wednesday August 19	Thursday August 20	Friday August 21
Blue	Purple	Silver	Red	Orange
Muffin & Yogurt	Sausage & Biscuit	Cinni Minis & Yogurt	Cereal Kit	Chicken Biscuit
Hot Dog, Bun, Chili, Coleslaw, Tater Tots OR PB & Jelly Uncrustable	Chicken Nuggets, Roll, Broccoli, Mac & Cheese OR Ham & Cheese Sandwich	Beef Tacos, Soft Wrap, Refried Beans, Rice, Salsa, Shredded Cheese, Let/Tom OR PB & Jelly Uncrustable	Corndog, Fries, Baked Beans OR Turkey & Cheese Sandwich	Cheese Pizza, Corn, Carrots OR Cheese Quesadilla
After School Activities (Students must be enrolled in the activity to attend.)				

Upcoming Events	
August 22	Rebel Run (See information above)
September 7	No School – Labor Day



John Sevier Elementary School

2001 Sequoyah Ave.
Maryville, TN 37804
Phone: 865-983-8551
Fax: 865-977-0725

Brandee Easterly, Principal
Brian Tinker, Assistant Principal
School Start Time: 7:50 a.m.
School Dismissal: 2:50 p.m.

Ways to Help Your School:

