



Iredell-Statesville Schools

Reopening Plan | August 2020

Together, Ensuring Student Success by Igniting a Passion for Learning

Our Mission

We are a premier school system where students come first. All students will receive a high quality, relevant education in a safe and caring environment which will produce confident, responsible and globally competitive citizens. Our students will be college and career ready.

Our Vision

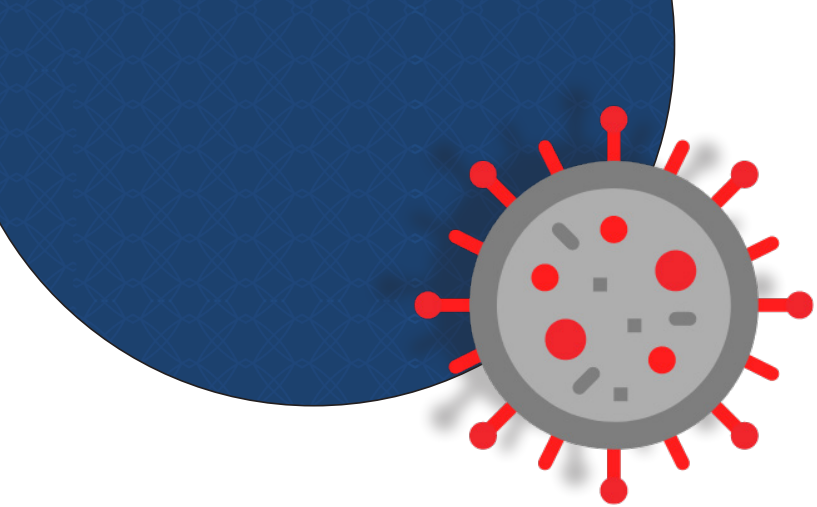
Together, ensuring student success by igniting a passion for learning.

Our Core Values

- Strong Relationships
- Focus on Students and Learning
- Collaborative Approach to Success
- Pursuit of Excellence and Success
- High Ethical Standards and Transparency

TABLE OF CONTENTS

02	Overview
02	Guiding Organizations
03	Re-Entry Plan
04	Stakeholder Feedback
05	Health & Safety Protocols
07	Instructional Model
08	Attendance
08	Meal Services



Overview

Iredell-Statesville Schools desires to secure the safety and protection of our students and our staff. The COVID-19 global pandemic has forced not only the district, but schools around our nation to change the way we do business. Schools play an essential role in educating the children in our community, providing children a safe place with a warm meal and supporting the economy. After North Carolina Governor Roy Cooper made the executive order closing schools on March 17, 2020, Iredell-Statesville Schools quickly shifted to evaluate and respond to the safety and educational options for students and staff. We acknowledge and appreciate what our district was able to accomplish when we shifted to remote learning with little preparation. This past spring, we witnessed hurdles that students and teachers encountered and opportunities to improve as we move forward.

GUIDING ORGANIZATIONS

- Centers for Disease Control (CDC)
- North Carolina Department of Health and Human Services (NCDHHS)
- North Carolina Department of Public Instruction (NCDPI)
- Iredell County Health Department (ICHHD)

RE-ENTRY PLAN

This school year is unlike any other. When we concluded the 2019-2020 school year, we had no idea that we would still be responding to the global pandemic. The 2020-2021 school year will be unique but we will still operate under our core values which hinge on giving our students the best educational opportunities while still maintaining a safe and caring environment. We need you to join alongside our district and embrace the ever-changing environment. We will need you to be flexible as we continue to respond to the guidance of our local and state officials.

On July 14, 2020, Governor Cooper, along with the NC State Board of Education (NCSBE) and the NC Department of Public Instruction (NCDPI), announced that schools would be allowed to reopen under the direction of Plan B. This plan allows schools the ability to reopen under a hybrid model that limits student capacity at each campus site. While districts may select to move forward with a more restricted model (Plan C), the option to still allow limited face-to-face instruction (Plan B) was adopted by Iredell-Statesville Schools. The Iredell-Statesville Schools Board of Education voted unanimously on July 20, 2020, to approve our system to open under Plan B with the option for parents to select Plan C if desired. Parents have the option to explore virtual options through their child's school or take part in iACADEMY through a homeschool/public school partnership.

Students that will be continuing their learning and instruction face-to-face will take part in a hybrid schedule to allow our schools to adhere to the restrictions from our state and allow additional time for deep cleaning our campuses. Students in grades K-8 will attend school at least 2 days a week and will learn virtually for the other days of the week. Students in grades 9-12 will have access to face-to-face learning based on the school they attend and the capacity on each high school campus. Each school will continue to communicate their specific plans about student days on campus.

STAKEHOLDER FEEDBACK

Staff Feedback

Iredell-Statesville Schools Staff Members were surveyed between June 24th – July 13th, 2020 to determine their perceptions and concerns for returning to work for the 2020-2021 school year. A total of 1,514 employees out of 2,550 responded to this survey.



91.4%

Face-to-Face

Indicated they would return face-to-face in August if we were able to partially or fully return to school



7.9%

Virtual Only

Indicated they would not return face-to-face in August if we were able to partially or fully return to school but would like to continue their work virtually



.7%

Exhaust Leave

Indicated they would not return face-to-face or work virtually in August if we were able to partially or fully return to school and have to exhaust their leave



Parent Feedback

On May 22, 2020, parents were asked to respond to a short survey specifically about their preference on returning to school for face-to-face instruction for the 2020-2021 school year. After the survey closed on May 29, 2020, the results reflect input from 12,660 responses.

87.8%

Face-to-Face

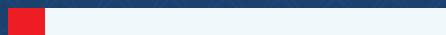
Indicated their child would be returning to the school building in August for face-to-face instruction for the 2020-21 school year



12.2%

Other Options

Indicated they would not return face-to-face in August if we were able to partially or fully return to school



45.6%

Virtual Options

Indicated they would like for their child's school to consider virtual and online learning options for returning to school in August



HEALTH AND SAFETY PROTOCOLS

Enhanced Health Protocols for the 2020-2021 School Year

EMPLOYEE ENHANCED HEALTH GUIDELINES

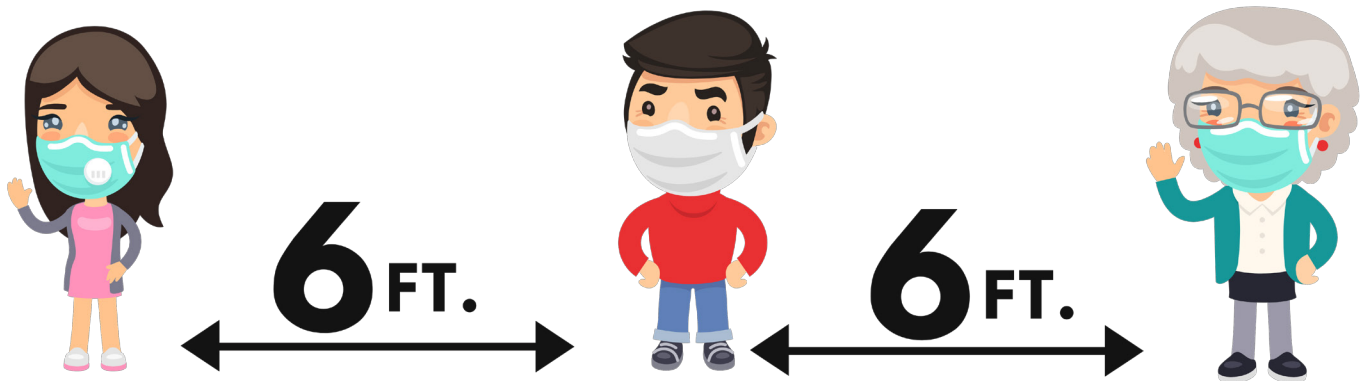
Upon arrival to work, each employee will complete the I-SS Employee Health Screening provided through Qualtrics. The Qualtrics platform can be accessed in two ways:



1. Employees will receive an email in their I-SS account every morning at 5:00 a.m. By clicking the link in this email, employees will gain access the COVID-19 Symptom Health Screener. A reminder email will be sent at 8:30 a.m. to those employees who have not completed their screening.
2. Visit the Staff & Faculty Portal from the website and click on the button located below “Time Keeper” entitled “COVID-19 Symptom Health Screener”.

Employee Screening is to occur each day upon arrival to the workplace and is NOT optional. Should an employee test positive for COVID-19, he/she will access the Contact Tracing portion of the Qualtrics platform for a confidential and quick way to inform others of their potential exposure.

Students and staff will maintain social distancing throughout the day. Desks will be spaced six feet apart to allow social distancing to take place in the classroom. Directional signage is located throughout the building to ensure social distancing when traveling throughout campus. When possible, hallways will be rerouted for one-directional transitions. Cloth face coverings are required. Scheduled face covering breaks will occur outside throughout the day. For additional protection, staff may wear a face shield, but it must be accompanied by a cloth face covering.



For further details regarding screening, symptoms, or processes, please visit the COVID-19 Employee Resources from the Faculty & Staff Portal or visit <https://www.issnc.org/departments/human-resources/covid-19-employee-resources>.

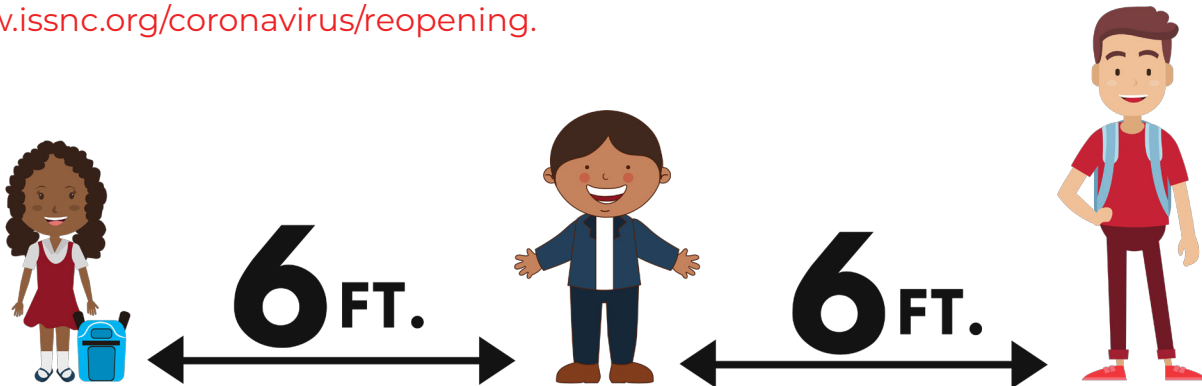
STUDENT ENHANCED HEALTH GUIDELINES

Upon daily arrival at school, each student will have their temperature taken. Any student with a fever higher than 100.4 will be sent home.



All students should complete an attestation form (www.issnc.org/coronavirus/attestation). In order to ride a bus to school, each family must complete this form once for each student prior to putting a child on the bus. Students whose parents have not completed the Bus Parent Acknowledgment and Attestation Form will NOT be allowed to ride the bus.

Students and staff will maintain social distancing throughout the day. Desks will be spaced six feet apart to allow social distancing to take place in the classroom. Directional signage is located throughout the building to ensure social distancing when traveling throughout campus. When possible, hallways will be rerouted for one-directional transitions. Cloth face coverings are required. Scheduled face covering breaks will occur outside throughout the day. For additional protection, students may wear a face shield, but it must be accompanied by a cloth face covering. For further details regarding screening, symptoms, waivers, or processes, please visit the COVID-19 Health and Safety Protocols at www.issnc.org/coronavirus/reopening.



MENTAL HEALTH THERAPY AND CRISIS SERVICES

School-based therapy and crisis services will continue to be provided by our school-based clinicians through our partnership with Children's Hope Alliance (CHA). School counselors and School Assistant Program Coordinator (SAP) from each school site complete the referrals to CHA. Crisis referrals can be made by calling Jeana Fisher at 704-872-7638. As always, if you have a mental health related concern for your student, please first reach out to their school's counselor or SAP.

CLEANING AND SANITIZING OF SCHOOL BUILDINGS

Each Wednesday and Friday will be designated as "deep cleaning" days. Each of the 37 school campuses, as well as our auxiliary buildings and offices, will follow their daily cleaning protocol.

For detailed information about cleaning in Iredell-Statesville Schools, please visit www.issnc.org/coronavirus/reopening.

PARENTS, VOLUNTEERS, AND VISITORS ON CAMPUS

Parents, volunteers and visitors will be extremely limited for the opening of the 2020-2021 school year. No individuals, other than students and employees, will be allowed inside school buildings without a scheduled appointment. This includes parents of students. Any individual who enters a school building will be asked to complete a health screening, have their temperature taken, and wear a mask.



Parents of kindergarten students and/or students who are new to their school will be given special consideration on the first day of school. Arrangements will be made at each school location to ensure a safe and smooth transition between parent and child. I-SS respectfully requests that parents make an appointment prior to entering the school building unless there are extenuating circumstances. Volunteers and visitors may enter a school campus by appointment only. We ask for parent cooperation as we work to keep children as safe as possible.

Instructional Model

Iredell-Statesville Schools has chosen Plan B, which is a hybrid instructional model. In grades K-8, students will attend school at least two days face-to-face and will learn virtual for the other days of the week. Students in grade 9-12 will have access to face-to-face learning based on the school they attend and capacity on each high school campus.

Students and families will be contacted by each individual school for specifics about student days on campus. Questions regarding a specific campus should be directed to that campus.

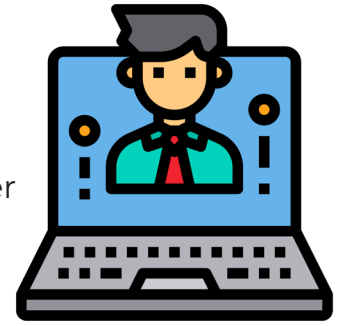
STUDENT EXPECTATIONS DURING REMOTE LEARNING DAYS

- Complete teachers posted lesson and assignments on Canvas or SeeSaw
- Email your teacher(s) when you are struggling with a lesson
- Check and respond to teacher(s) emails
- Check in with the teacher during posted office hours each day
- Seek help if you are stuck or need help
- Set a routine schedule to work online each day



TEACHER ROLES DURING REMOTE LEARNING DAYS

- Post the online lessons for the week congruent with daily face-to-face assignments
- Provide virtual small group interventions with struggling students
- Set synchronous times for students to check in virtually per class
- Set office hours to respond to student/parent emails/inquires daily
- Refer any social emotional concern to counselor, SAP or social worker
- Maintain up-to-date gradebook in PowerSchool



ARTS AND ELECTIVES

Performance driven classes (visual arts, music, band, CTE courses) may meet together in a larger venue. All choral and band classes will sing and play wind operated instruments outside or virtually. Additional information will be provided by each school location.

Attendance

All students will have attendance taken whether face-to-face, remote or virtual/online. Face-to-face will be coded as “Present On-Site” or Absent. On remote days and Virtual/Online days, students will be coded daily as “Present: Off-site.” Students will not be counted absent until the student is not logging on or completing assignments and the teacher and/or administration has had conversations with the student and parent.

For the 2020-2021 school year, Perfect Attendance awards and incentives will be waived.

Meal Services

For each day that a student is on campus, a pre-packaged lunch will be available to pick-up from the cafeteria. On days when students are learning remotely, a school lunch pick up will be available on each campus. To pick up a meal at one of our pick-up meal sites on virtual learning days, please complete the form at www.tinyurl.com/mealrequestform.

We encourage families to complete the Free and Reduced-Priced Meal Application by visiting www.lunchapplication.com.