

# BRONX CHARTER SCHOOL FOR EXCELLENCE

2020-21 Reopening Plan





# CONTENTS

- ▶ **Reopening Plans**

- ▶ Two Models
- ▶ Hybrid Learning
- ▶ Fully Remote

- ▶ **Scholar Safety**

- ▶ Containment & Exposed Individuals
- ▶ Return to School After COVID Testing Procedures

- ▶ **Logistics**

- ▶ Cleaning & Disinfecting
- ▶ Arrival & Dismissal
- ▶ Food Service
- ▶ Busing

- ▶ **FAQ & Next Steps**

# Our Mission



The mission of the Bronx Charter Schools for Excellence 1-5 is to prepare our scholars to compete for admission to and succeed in top public, private and parochial high schools by cultivating their intellectual, artistic, social, emotional, and ethical development.

Education in the midst of a global pandemic necessitates a shift in the manner by which instruction is delivered, but by no means does it alter our mission or deviate from our intent to ensure all of our scholars have equitable access to our high-quality educational programs.

Within this presentation, we describe how we will educate our scholars through careful planning and the necessary agility to adapt based on local health data, individual considerations, and surrounding circumstances.

It should be noted that these plans are considered living documents as implementation and health data will likely inform better practices and require constant evolution in execution.

# REOPENING PLANS

- ▶ Two Models
  - ▶ Hybrid Learning
  - ▶ Fully Remote



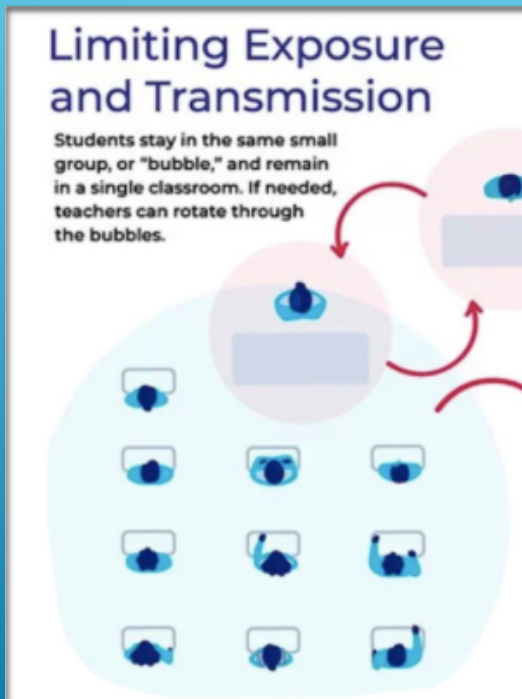


# HYBRID LEARNING

► Scholars will be pre-assigned to one of two self-contained groups to attend school in person on an alternating schedule for two days a week and participate in remote instruction for the remainder of the week.

Grades K-8	Monday	Tuesday	Wednesday	Thursday	Friday
On Campus	Group A	Group A	None	Group B	Group B
At Home	Group B following distance learning plan with heavy teacher support	Group B following distance learning plan with heavy teacher support	All groups at home for independent learning and project-based learning Teacher meetings, professional development and planning. School closed for deep cleaning and disinfection.	Group A following distance learning plan with heavy teacher support	Group A following distance learning plan with heavy teacher support

## HYBRID LEARNING, CONT.



### ► Capacity

- No more than 15 scholars will be in a classroom at a time.

### ► Cohorts

- The use of "cohorting" will play a crucial role in minimizing transmission and facilitating testing and tracing procedures should they be enacted.
- Scholars from the same household will be assigned to the same self-contained pre-assigned group
- Scholars will remain with their classroom cohort throughout the day,
- Our middle school content area teachers will rotate through a fixed set of classrooms while maintaining social distancing.

# HYBRID LEARNING, CONT.



## ► Safety and Social Distancing

- Bronx Excellence will use one-way markers, signs, and postings to control foot traffic and allow for maximum distancing, including at the school's entrance and throughout the school building in common areas, bathrooms, and stairways.
- Classroom furniture including the teachers desk will be spaced to provide six feet of distancing where possible. Alternatively, where six feet of social distancing is not possible, we will procure partitions/sneeze guards or other suitable protective dividers to distance students and staff.
- Bathrooms will be used one at a time during a designated time for the cohort.

## HYBRID LEARNING, CONT.

### ► Safety and Social Distancing, cont.



- ▶ The gym and cafeteria will be used to create additional overflow space for instruction and social distancing.
- ▶ Additionally, social distancing markers will be placed on proximal outdoor spaces directly outside of the building where students may line up for entry or buses.
- ▶ Each student will have their own baggie, cubby, or bin for their belongings, which will be kept next to them in the classroom to reduce foot traffic across the classroom.
- ▶ Students will also be discouraged from sharing items or materials to prevent contact or transmission. Hand and respiratory hygiene will be taught and practiced daily.
- ▶ There will be no use of common areas such as water fountains.
- ▶ No classroom rugs or communal bookshelves/classroom libraries.
- ▶ No afterschool programming of any kind. Buildings will be closed on Wednesdays, evenings, and weekends for deep cleaning and disinfection.



## HYBRID LEARNING, CONT.



### ► Safety and Social Distancing, cont.

- Arrival & Dismissal will look different than in previous years and operate on a staggered schedule. Families and visitors will not be permitted in the building.
- All entrants and occupants of the facility, which will be restricted to scholars, staff, and essential personnel, will be required to wear face masks at all times.
- No touch hand sanitizing stations will be available on all floors.
- Any individuals refusing to wear a mask will be denied access to the building.



## HYBRID LEARNING, CONT.

### ► A Day In The Life (Before School)

► Parents/guardians and school staff will be instructed that any student or staff member exhibiting any of the following symptoms of possible COVID-19 virus infection should not be present in school:

- Fever or chills (100°F or greater)
- Cough;
- Shortness of breath or difficulty breathing;
- Fatigue;
- Muscle or body aches;
- Headaches;
- New loss of taste or smell;
- Sore throat;
- Congestion or runny nose;
- Nausea or vomiting; and/or
- Diarrhea

## HYBRID LEARNING, CONT.

### ► A Day In The Life (At School)

- Scholars will use the restroom on schedule with their cohort, remain in the classroom 6 feet socially distanced in their seats with a face mask on throughout the day.
- Scholars will not be permitted to freely walk around the classroom, building, or leave their designated cohort.
- There will be breaks built in to stand and stretch in their designated space.
- If social distancing space permits, students will also be granted periodic mask breaks throughout the day.
- School lunch will be delivered to each cohort and distributed by a cohort staff member, scholars may bring lunch from home.
- Scholars will eat lunch in the classroom.



# HYBRID LEARNING, CONT.

## ► A Day In The Life (Distance Learning)

- Scholars be receiving similar instruction during days they are learning from home. The schedule will closely mirror the one they will have when they are learning in the building.
- It is imperative that scholars are prepared to receive instruction as outlined in the schedule.

Hybrid Distance Learning	
8:30-9 am (Reading Whole Group)	<ul style="list-style-type: none"> <li>• Direct Instruction Video</li> <li>• Simulcast Instruction</li> <li>• Journeys Independent Work</li> </ul>
9-10 am (Reading Small Group)	<ul style="list-style-type: none"> <li>• Independent Reading</li> <li>• Guided Reading via BookNook (self-guided)</li> </ul>
10-11 am (Math)	<ul style="list-style-type: none"> <li>• Direct Instruction Video</li> <li>• Simulcast Instruction</li> <li>• Independent Work</li> </ul>
11-12 pm (Writing)	<ul style="list-style-type: none"> <li>• Direct Instruction Video</li> <li>• Simulcast Instruction</li> <li>• Independent Work</li> </ul>
12-1 pm	<ul style="list-style-type: none"> <li>• LUNCH</li> </ul>
1-2 pm (Tutoring)	<ul style="list-style-type: none"> <li>• Scholars with IEP's</li> <li>• Scholars who are struggling.</li> </ul>
2-3 pm	<ul style="list-style-type: none"> <li>• Office Hours</li> </ul>

## HYBRID LEARNING, CONT.

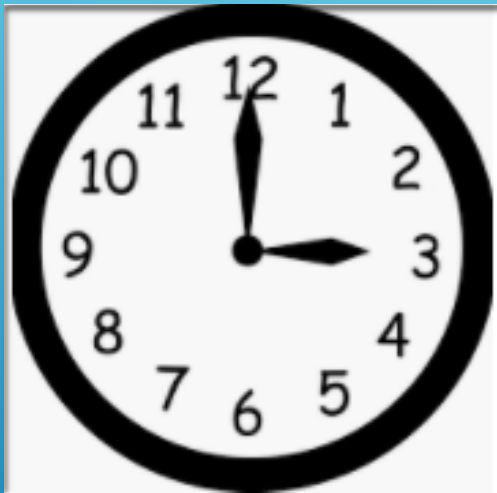
### ► A Day In The Life (Before School)

- Please send your scholars to school with all materials they will need including a bottle of water for the day.
- If your scholars or their siblings are sick or are not feeling well, keep them home.
- Families must do a pre-screening of their child's temperature and well-being before taking them to the bus stop and boarding the bus.
- On the school bus, siblings will be required to sit next to each other as a precaution.
- All scholars will be required to wear a face covering and abide by regulations in accord with the district's transportation guidelines on the school bus.
- Upon arrival, all children will be screened again prior to entry.
- The school will ask the Office of Pupil Transportation to sanitize and clean the buses prior to our students boarding to go home.





## HYBRID LEARNING, CONT.



### ► A Day In The Life (After School)

- BCSE will not participate in extracurricular, co-curricular, or interscholastic activities. Students and staff will only engage in extracurricular activities that can be shared/provided remotely
- Scholars must be picked up on time for the safety of all cohorts

## FULL-TIME REMOTE LEARNING

If health data directs or if a parent/guardian chooses to opt-out of in-person instruction, a remote learning option is available to all learners.

Grades K-8	Monday	Tuesday	Wednesday	Thursday	Friday
<b>At Home</b>	All groups following distance learning plan with heavy teacher support	All groups following distance learning plan with heavy teacher support	All groups at home for independent learning and project-based learning  Teacher meetings, professional development and planning.	All groups following distance learning plan with heavy teacher support	All groups following distance learning plan with heavy teacher support

## FULL-TIME REMOTE LEARNING, CONT.

Full Time Distance Learning		
Time	Subject	Content
8:30-9 am	Reading Whole Group	<ul style="list-style-type: none"> <li>• Direct Instruction Video</li> <li>• Simulcast Instruction</li> <li>• Journeys Independent Work</li> </ul>
9-10 am	Reading Small Group	<ul style="list-style-type: none"> <li>• Independent Reading</li> <li>• Guided Reading Groups via BookNook (teacher guided)</li> </ul>
10-11 am	Math	<ul style="list-style-type: none"> <li>• Direct Instruction Video</li> <li>• Simulcast Instruction</li> <li>• Independent Work</li> <li>• Small Group w/ Teacher Support</li> </ul>
11-12 pm	Writing	<ul style="list-style-type: none"> <li>• Direct Instruction Video</li> <li>• Simulcast Instruction</li> <li>• Independent Work</li> <li>• Small Group w/ Teacher Support</li> </ul>
12-1 pm	LUNCH	
1-3 pm		<ul style="list-style-type: none"> <li>• Independent Work</li> <li>• Science/Social Studies Projects</li> <li>• Specials</li> <li>• Tutoring (IEP &amp; struggling scholars)</li> </ul>

# FULL-TIME REMOTE LEARNING, CONT.



## ► A Day in the Life

- Students who opt out of in-person instruction will have the ability to participate in our Remote Learning program. The student's needs will be assessed on a case-by-case basis in consultation between the child's family, Principal, teachers, and possibly under the advisement of a healthcare professional. The leadership team will provide clear expectations for the roles and responsibilities of the staff, scholar, and guardian, to include attendance and assignment completion, as well as any implications that each option might have.
- These scholars will remain at home 5 days a week for distance learning and independent work.

# SPECIAL EDUCATION & SOCIAL EMOTIONAL SERVICES



- ▶ Bronx excellence will continue to provide equitable access to our high-quality instructional program to all students, including those with special needs and English learners. We have been in close communication with our special education staff, and will be consulting with our district, CSE, and their service providers to ensure that our scholars receive essential services.
- ▶ Scholars who require mental health and/or behavioral support services will continue receiving services within the school day, whether they are on site or learning remotely. Service providers will offer those services remotely.



# EQUITY

- ▶ Bronx Excellence will ensure that the scholars, families, and staff are able to access and smoothly modulate between the plans to ensure a continuity of learning, regardless of which operational plan is being utilized, whether they attend in-person instructional sessions, view live lessons synchronously or in simulcast, or asynchronously through online lessons at a time that is available. As always, we will be sure to preserve the equitable educational rights of all scholars, with particular attention to our most vulnerable populations. We will attend to special considerations particularly for students who are struggling or vulnerable by providing additional dedicated time for intervention and support.
- ▶ We will communicate with each family to ensure that students who are learning remotely or off campus have or receive an internet-capable device from which to work (e.g. Chromebooks) and any training they need to facilitate hybrid and remote learning. The school will also provide support in attaining dependable internet connectivity for those families in need. Our tech support team will be available to troubleshoot and mitigate any issues that may arise.



**SCHOLAR SAFETY**

# SCHOLAR SAFETY

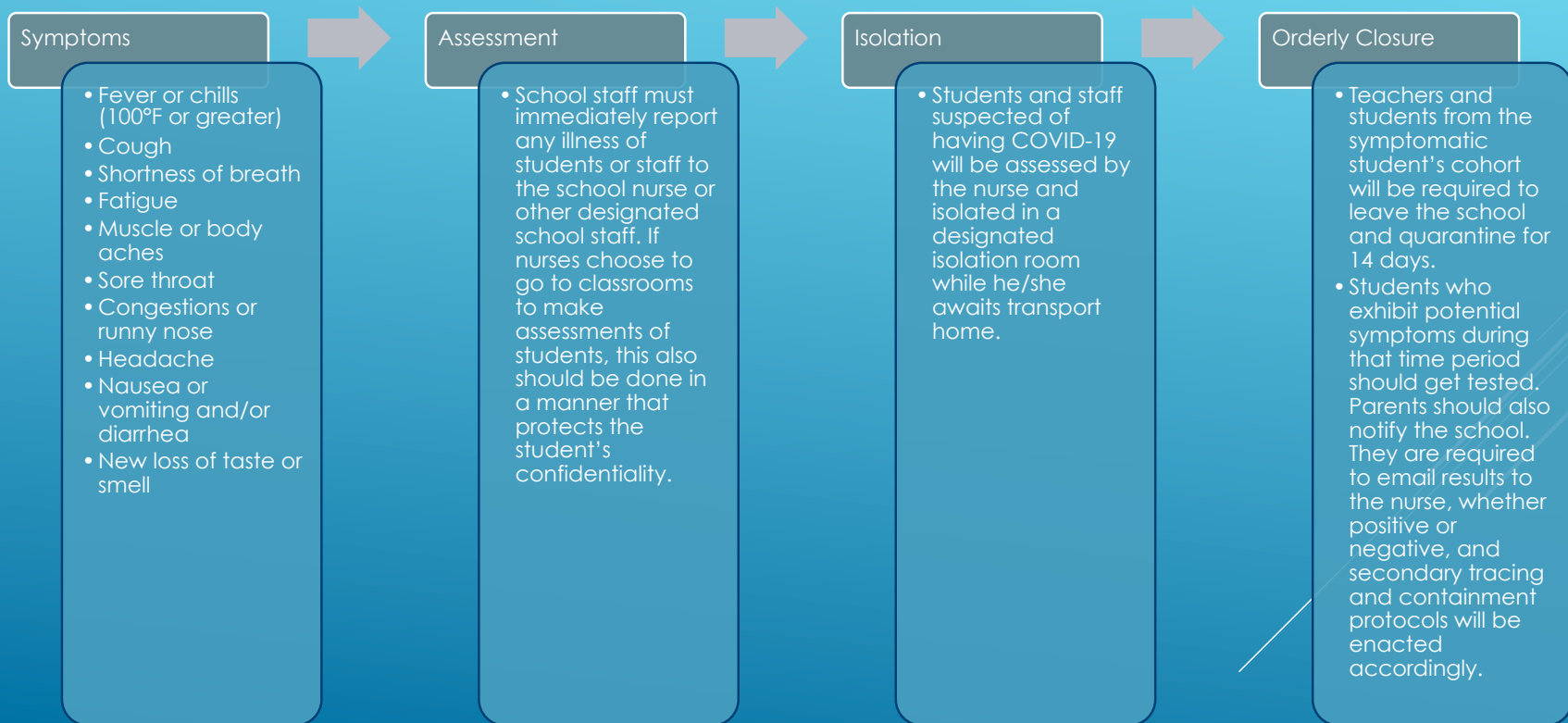
## ► Screening

- Temperature checks and use of hand sanitizer will be required at every point of entry. All persons will have their temperatures checked via a contactless thermometer.
- Any individuals with a fever or above normal temperature (100°F or greater) will be denied access.
- All persons with an acceptable temperature will be allowed access and be required to use sanitizer at a contactless station upon entry to the building
- No parent will be allowed to come into the building.

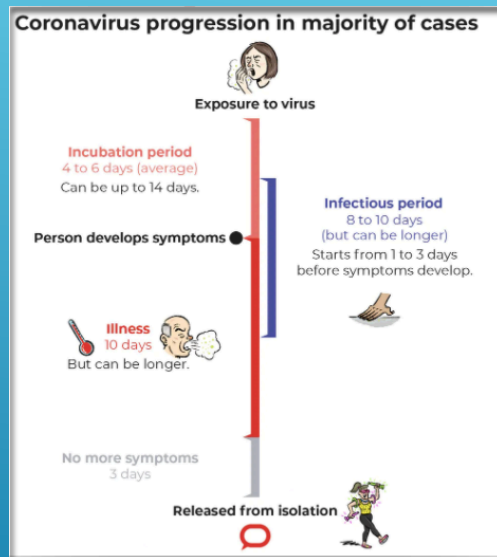


# SCHOLAR SAFETY, CONT.

## ► Containment



# SCHOLAR SAFETY, CONT.



## ► Exposed Individuals

- BCSE will follow the CDC and DOH recommendations for communication with exposed individuals' families. Parents/guardians will receive a digital letter via our school communication system, School Messenger.
- The entire cohort (which can include scholars on the bus) must quarantine for 14 days and will transition fully into remote learning during this time.



## SCHOLAR SAFETY, CONT.

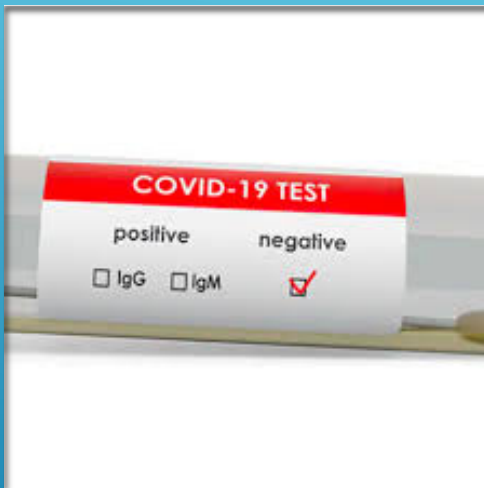


### ► Return to School After Symptoms, Positive Results

► If a person is diagnosed with COVID-19 by a healthcare provider based on a test or their symptoms or does not get a COVID-19 test but has had symptoms, they should not be at school and should stay at home until:

- It has been at least fourteen days since the individual first had symptoms;
- It has been at least three days since the individual has had a fever (without using fever reducing medicine); and
- It has been at least three days since the individual's symptoms improved, including
- Cough and shortness of breath.

## SCHOLAR SAFETY, CONT.



### ► Return to School After Symptoms, Negative Results

► BCSE will follow CDC guidance for allowing a student or staff member to return to school after exhibiting symptoms of COVID-19. If a person is not diagnosed by a healthcare provider with COVID-19 (negative test by a physician, nurse practitioner, or physician assistant), they can return to school:

► Once there is no fever, without the use of fever reducing medicines, and they have felt well for 24 hours;

► If they have been diagnosed with another condition and has a healthcare provider written note stating they are clear to return to school.



**LOGISTICS**

# LOGISTICS

## ► Cleaning & Disinfecting

- BCSE will follow the CDC's Reopening Guidance for Cleaning and Disinfecting

► Cleaning, sanitizing, and disinfecting learning spaces, surfaces, common and high traffic areas will increase throughout the day

► Bathrooms will be cleaned and disinfected after use by each cohort

- The following will be cleaned every hour.

- Hand rails
- Door knobs
- Push bars
- High touch surfaces



## LOGISTICS, CONT.

### New Arrival & Dismissal Procedures



- ▶ **Arrival & Dismissal**
- ▶ Bronx Excellence will use one-way markers to control foot traffic and allow for maximum distancing at the school's entrance and exit points.
- ▶ All entry and exit point doors will be utilized to maintain social distancing, minimize clustering in the building and expedite the arrival and dismissal procedures.
- ▶ BCSE will utilize a staggered arrival and dismissal schedule.
- ▶ Parents will not be allowed to enter the building to pick up their scholars.
- ▶ BCSE will not participate in afterschool, tutoring, extracurricular, co-curricular or interscholastic activities.



# LOGISTICS, CONT.



## ► Busing

- We do not have any updated information from our busing vendor, OPT, currently.
- In a hybrid-learning environment, transportation will still be provided to students who have chosen on site learning based on the guidelines.
- All families who receive busing services will be required to participate in a meeting to review expectations, rules & regulations.
- Busing is available for scholars in grades K-6. Not all scholars will qualify for busing.

## LOGISTICS, CONT.



### ▶ Food Service

- ▶ Breakfast and lunch will be served daily.
- ▶ Meals will be delivered to the classrooms and distributed by a staff member in the cohort.
- ▶ Parents are encouraged to send in breakfast and/or lunch with their scholars. Please be sure to send 100% fruit juice, water or milk.
- ▶ We are a NUT- FREE school.

# FREQUENTLY ASKED QUESTIONS FOR PARENTS



- ▶ What supports will be provided for students who will access remote instruction? Scholars will have access to a laptop to support the academic program.
- ▶ Will there be any sports or after school activities for the 2020-21 school year? Sports and after school programming will not be offered for the 2020-21 school year.
- ▶ What should I expect around communication? BCSE Families will receive consistent access to information by way of School Messenger, emails, phone calls, and newsletters.
- ▶ If my child missed a day of school in the Hybrid model, will I be able to send my child to school with another cohort? No, children must remain with their cohort.
- ▶ Will I be able to make changes to my child's educational model? A request to change your child's educational model may be had with school leadership and is subject to availability at the time of the request.
- ▶ Others?



## COMMUNICATION

- ▶ Bronx Excellence will continue to provide clear, transparent, and ongoing communication and support for our families using the following communication systems:
- ▶ Email
- ▶ School Messenger
- ▶ Clever
- ▶ School website and social media accts.



- ▶ reachexcellence

- ▶ Please be sure to complete the **survey** sent to you via School Messenger to help us plan for the the new school year.

## WHAT'S NEXT



- ▶ Each school will be holding more virtual Town Halls to share this information and answer your questions.
- ▶ If you require further information, please visit our school website or contact your local school leader.