


Return to Learn



REVISED RETURN TO LEARN PLAN
Board of Education Meeting
August 13, 2020



Restore Illinois

Today we continue
to be in Phase 4

PHASE 1 Rapid Spread	PHASE 2 Flattening	PHASE 3 Recovery	PHASE 4 Revitalization	PHASE 5 Restored
Enhanced Remote Learning	Enhanced Remote Learning	Enhanced Remote Learning	Enhanced Remote Learning Work to transition to In-Person / Hybrid Model for Trimester 2	All Students Return to In- Person Daily Instruction per IDPH/ISBE Health & Safety Guidelines

We may not know what the 2020-2021 school year will look like at any given moment, but we do know it will fall into some part of this continuum. We will prepare for all scenarios and for the quick pivots that may need to be made as the landscape changes.

Foundational Beliefs That Have Guided ESD20 Planning

- *Health and safety of school community*
- Academic rigor and social emotional support
- Relationship-building
- Following state and local guidelines

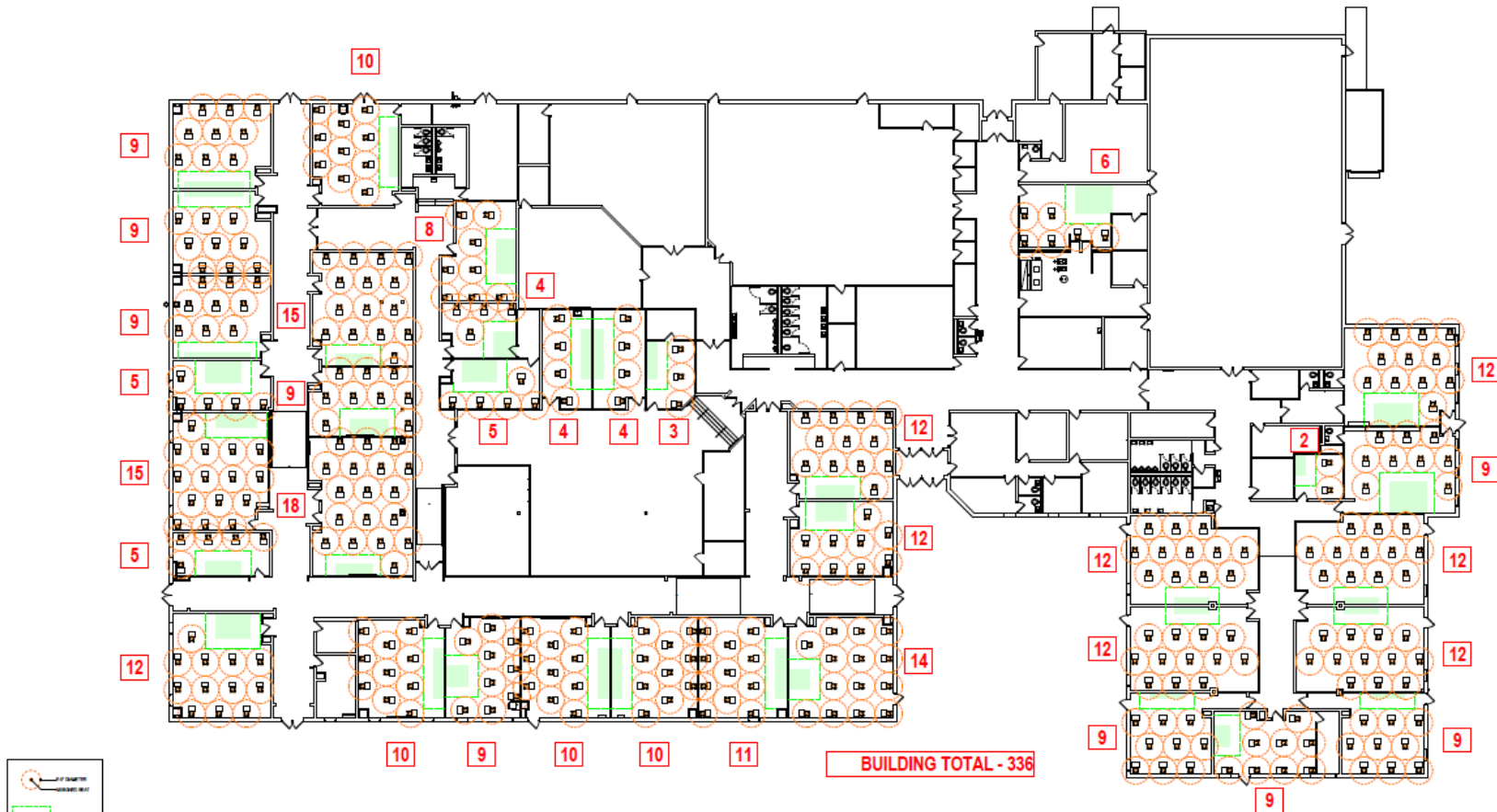
Return to Learn Plan

Presented July 23, 2020

- From July 27 to July 31, all families submitted their Learning Choice regarding the instructional model they would follow for the first trimester. *We did not receive a response from over 300 students across the district.*
- From August 3 to August 7, secretaries from each of the schools followed-up individually with families to gather learning choices for as many students as possible.

DAILY IN-PERSON LEARNING WITH SHORTENED DAY	ENHANCED REMOTE LEARNING
<p>In-Person Instruction</p> <p>5 days a week</p> <p><u>Elementary</u> 8:30am to 2:30pm Includes lunch/recess</p> <p><u>Middle School</u> 7:45am to 1:45pm Includes lunch/study hall</p>	<p>Remote Instruction</p> <p>5 days a week</p> <p><u>Elementary</u> 8:30am to 2:30pm Includes lunch/movement breaks</p> <p><u>Middle School</u> 7:45am to 1:45pm Includes lunch/breaks</p> <p><i>Emphasis on “live” instruction.</i></p> <p><i>Aligned with same content standards and skills as in-person instruction.</i></p>

Greenbrook Classroom Layouts



Greenbrook Learning Choices

Grade	In-Person Learning	Enhanced Remote Learning
K - 3 sections	31 2 sections of 15/16	29 1 section of 29 <i>(need 2 sections of 14/15)</i>
1st – 3 sections	20 2 sections of 10	42 1 sections of 42 <i>(need 3 sections of 14)</i>
2nd– 4 sections	25 2 sections of 12/13	44 2 sections of 22
3rd – 4 sections	34 2 sections of 17/18 <i>(need 3 sections of 11/12)</i>	47 2 sections of 23/24
4th – 4 sections	31 2 sections of 15/16 <i>(need 3 sections of 10/11)</i>	51 2 sections of 25/26
5th – 4 sections	37 2 sections of 18/19 <i>(need 3 sections of 12/13)</i>	39 2 sections of 18/19
ALL GRADES	178	252
SCHOOL TOTAL	430	

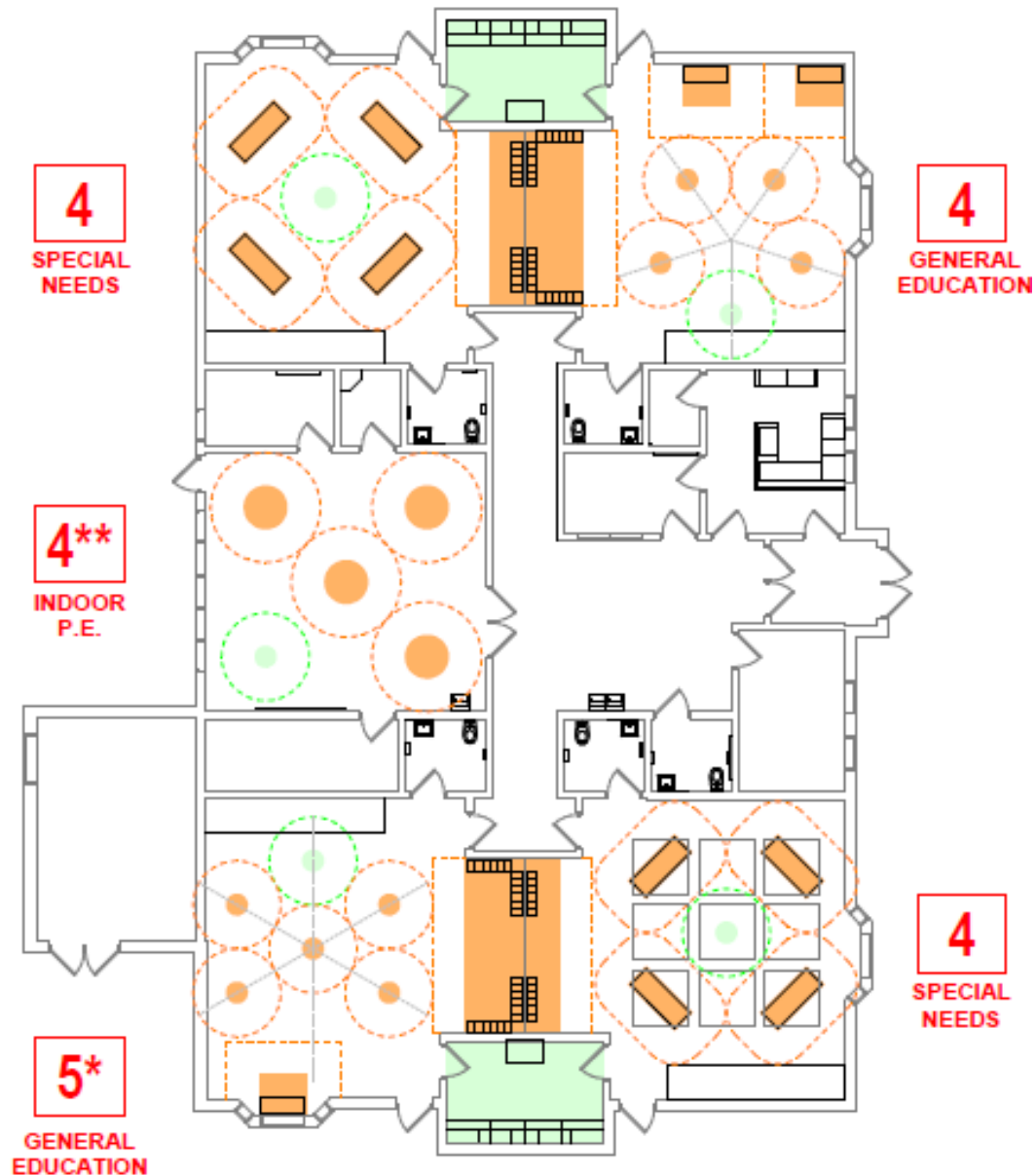
Greenbrook Concerns

- The number of students in both in-person and the remote environments pose concerns for providing safe and quality education for our students
- Classroom capacity limits the number of in-person students with physical distancing requirements
- Large number of students in some sections would require 6 additional teaching staff
- 15.2% average mobility rate over 5 years
 - State average is 9% over 5 years
- Limited pool of substitute teachers available for staff absences/quarantine periods

Early Childhood Center

56 Preschool Students
currently registered
*approximately 50%
requested in-person
learning*

Max Capacity
4 students per room,
with a total 16 students
for ECC building



BUILDING TOTAL - 16 (17*)

**** STUDENTS ALREADY PRESENT**

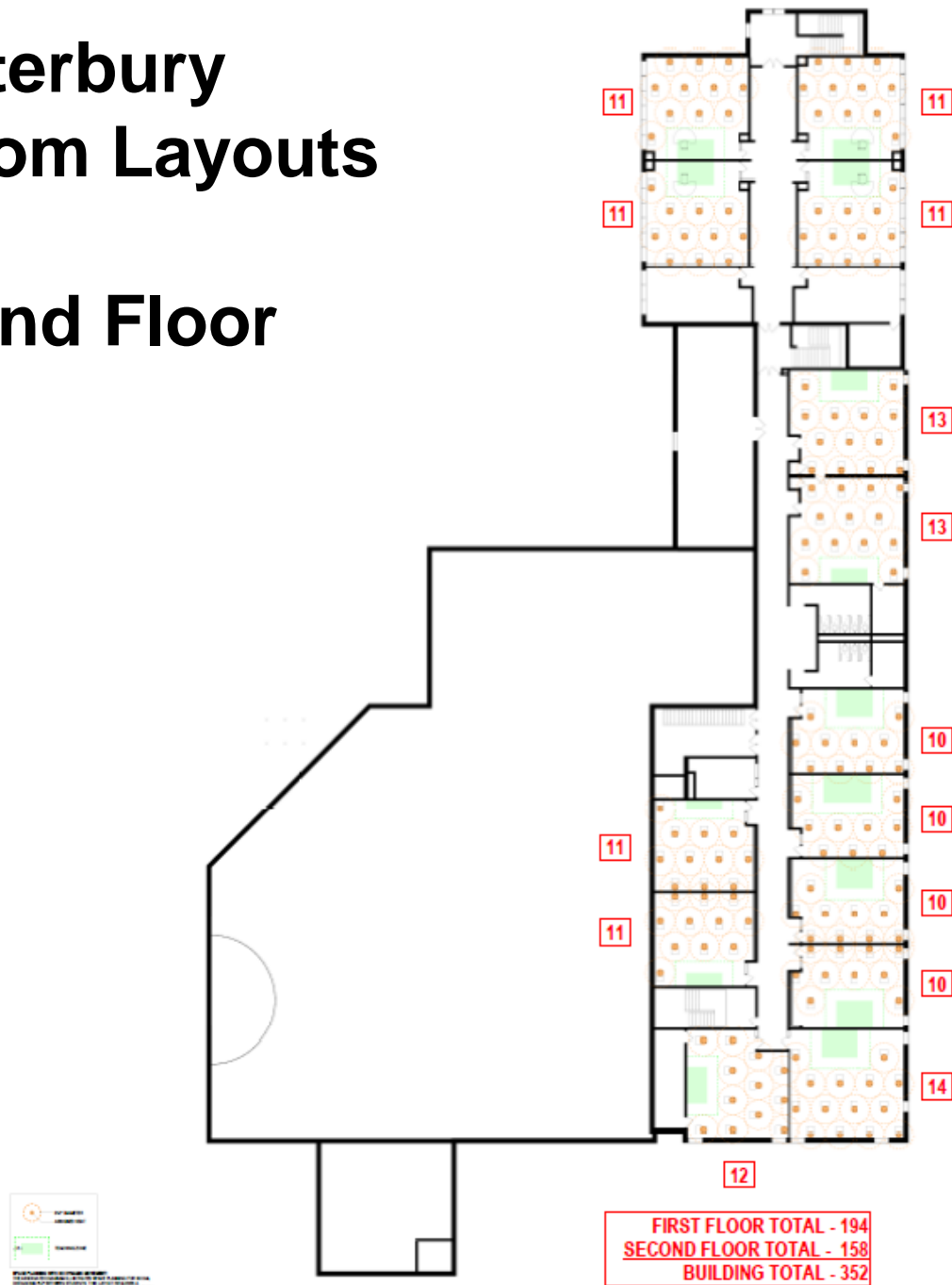
Waterbury Classroom Layouts

First Floor



Waterbury Classroom Layouts

Second Floor



Waterbury Learning Choices

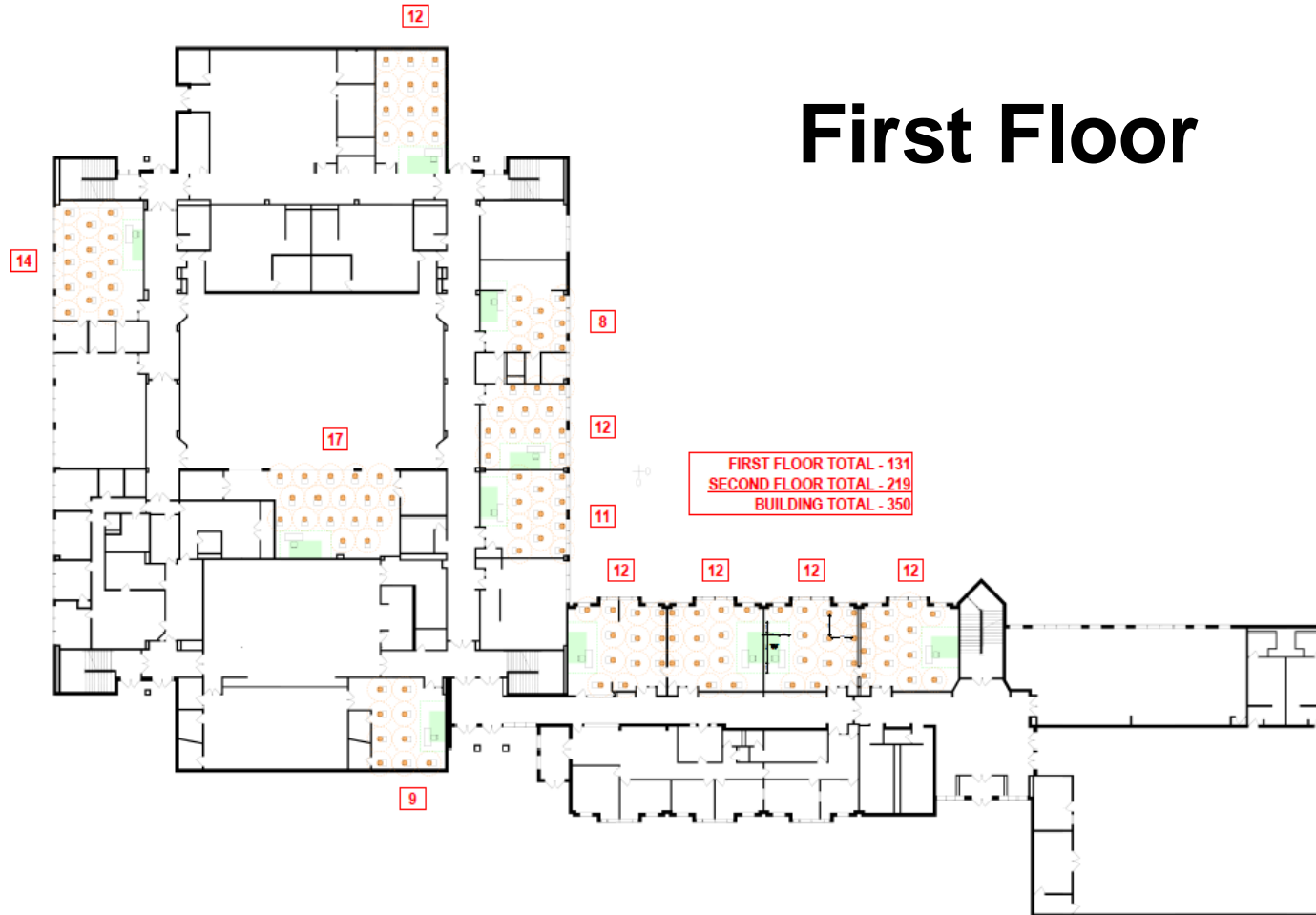
Grade	In-Person Learning	Enhanced Remote Learning
K - 3 sections	46 2 sections of 23 <i>(need 4 sections of 11/12)</i>	26 1 section of 26 <i>(need 2 sections of 13)</i>
1st – 3 sections	40 2 sections of 20 <i>(need 3 sections of 13/14)</i>	24 1 section of 24 <i>(need 2 sections of 12)</i>
2nd– 4 sections	41 3 sections of 13/14	24 1 section of 24
3rd – 4 sections	42 3 sections of 14	30 1 section of 30 <i>(need 2 sections of 15)</i>
4th – 4 sections	46 3 sections of 15/16 <i>(need 4 sections of 11/12)</i>	26 1 section of 26
5th – 3 sections	35 2 sections of 17/18 <i>(need 3 sections of 11/12)</i>	25 1 section 25
ALL GRADES	250	155
SCHOOL TOTAL	405	

Waterbury Concerns

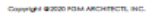
- The number of students in both in-person and the remote environments pose concerns for providing safe and quality education for our students
- Classroom capacity limits the number of in-person students with physical distancing requirements, even with reassigned classrooms
- Large number of students in some sections would require 8 additional teaching staff
- Challenges and uncertainty with student numbers with delayed/unknown registrations
- Limited pool of substitute teachers available for staff absences/quarantine periods

Spring Wood Classroom Layout

First Floor



Second Floor



SPRING WOOD - SECOND FLOOR LAYOUTS

8/11/2020 2:10:39 PM
15-2649-03

Spring Wood Learning Choices

Grade	In-Person Learning	Enhanced Remote Learning
6	98	65
7	91	67
8	93	54
ALL GRADES	282	186
SCHOOL TOTAL	468	

Spring Wood Concerns

- Classroom capacity max is approximately 12 students each
- Requires adding 6 teachers to meet grade level and scheduling needs - 3 social studies teachers and 3 science teachers
- Limited pool of substitute teachers available for staff absences/quarantine periods

Challenges

- ***Providing a safe learning environment for our students and staff based on the number of students desiring in-person and remote learning models***
- Escalating number of COVID-19 cases in DuPage County
- Changing and increasingly restrictive health & safety state and local guidance
- Limited space in classrooms, especially when take safety guidelines into account (i.e., 6 foot physical distancing – modelled by FGM Architects)
- Removing and storing classroom furniture to meet health & safety guidelines
- Increased staffing demands due to number of students in-person vs remote
- Increasing financial burden will require Board to approve a deficit budget to meet needs

Financial Impact

Budgetary Considerations

	Budgeted in FY 20-21 Budget	Additional Items Needed	Unforeseen Costs	Total Minimally
Disinfectant Specialists	264,000.00			
Tents (\$8,000/month)	24,000.00			
Bus Monitors & Disinfecting	141,215.00			
Pods & Storage Areas for New Furniture & to Empty Classrooms		200,000.00		
Architect Costs to layout classrooms		15,000.00		
PPE Supplies	50,000.00			
Planning Meetings	40,000.00			
Purchased Services	25,000.00			
Assistant Nurses	120,000.00			
6 Additional Teachers for Middle School			390,000.00	
8 Additional Teachers for Waterbury			480,000.00	
6 Additional Teacher at Greenbrook			360,000.00	
Modular Classrooms - 2 for WB, 5 for GB,			700,000.00	
Totals:	\$ 664,215.00	\$ 215,000.00	\$ 1,930,000.00	\$ 2,809,215.00

***How can we continue to
provide a quality education to
all Keeneyville Students?***

Considerations

- Allowing all of our students in-person was not possible given the health and safety requirements in our local DuPage County area (i.e., physical distancing requirement of 6 feet, maximum capacity of 50 people in one space).
- Only 55% of our families responded to the Back to School Family Survey in July.
 - At that time, a large portion (43%) of our responding families were not comfortable with sending students in-person.
- Currently, 593 students (45.5% of the district) requested remote learning for the Learning Choice.
- Family feedback also revealed that a Hybrid Instructional Model (alternating days/weeks of in-person learning) would cause undue burdens on families for childcare and work schedules.
- Examined use of non-traditional and flexible spaces, reassignment of staff current staff, and varying instructional models for our schools by grade level, but none of those options would allow us to meet the original Return to Learn Plan.
- Limited pool of qualified candidates to meet increased staffing needs

Revised Return to Learn Plan

for First Trimester (through 11/6/2020)

ENHANCED REMOTE LEARNING FOR ALL

5 days a week
Monday through Friday

Preschool

*Specific times for each section
will be shared with families next week*

Elementary

8:30AM to 2:30PM
Includes lunch/movement breaks

Middle School

7:45AM to 1:45PM
Includes lunch/breaks

School Begins:

Tuesday, August 25 – Grades 1-8
Thursday, August 27 – Kindergarten
Friday, August 28 – Preschool

Enhanced Remote Learning for All

Preschool thru 8th Grade

- Enhanced Remote Learning for All Students will continue through the first trimester (ends November 6), with the phase-in for in-person/hybrid learning model in second trimester
- Safety and wellness of students and staff remains a priority
- “Live” instruction by D20 teacher delivered from their classrooms
- Cross-building grade level planning
 - Consistent critical content and grade level standards
- Access to interventions and supports in a remote environment
- Access to PE, art, music, and band in remote environment
- Social emotional learning and supports
- Assessments for learning recovery
- Grading and attendance will be recorded daily

Additional Enhancements

- District will continue to work hand-in-hand with KEA Leadership to deliver the safest and highest quality education for our students
- Allows us to start school with minor adjustment to allow for teacher institute and planning days on August 19, 20, 21 and 24
- The revised plan allows the district to consider opportunities to be more creative in proactively engaging students, including some of the following possible options:
 - Virtual Curriculum Nights
 - Parent and family support and resources
 - Live instruction
 - Social emotional support
 - English Learner support
 - Limited in-person special education programming
 - Limited in-person small group tutoring
 - Limited in-person extracurricular activities
 - Creative use of transportation to support students

Next Steps for Families

- Revised Return to Learn Plan presentation will be shared with all families and staff on Friday, August 14, 2020 by email, as well as posted on the district website
- We will continue to update the Return to Learn FAQs on the website, as well as respond to questions/concerns sent to info@esd20.org
- Families will receive information on the following:
 - Teacher and class assignments by next Thursday, August 20
 - Pick-up of Chromebooks and class materials before school starts
 - Family and student expectations for remote instruction and weekly pick-up of class materials
- Virtual Curriculum Nights will be planned for the Fall
- The District is looking into partnering with the local park districts to provide childcare options in our buildings
- First Day of School will be as follows:
 - Tuesday, August 25 – Grades 1-8
 - Thursday, August 27 – Kindergarten
 - Friday, August 28 – Preschool

Questions

