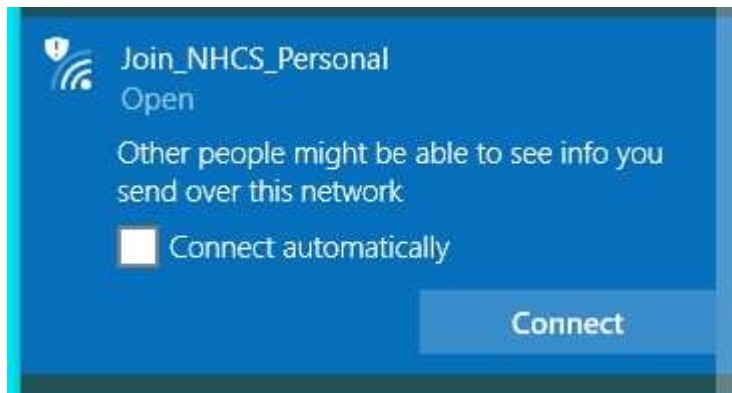


Open your WiFi options by clicking on the icon in the bottom right hand corner and click on **Join_NHCS_Personal**.



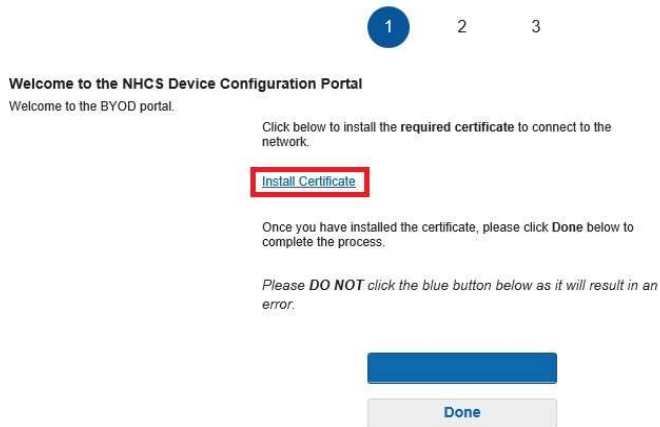
Ensure the **Connect Automatically** box is “unchecked” and click **Connect**.



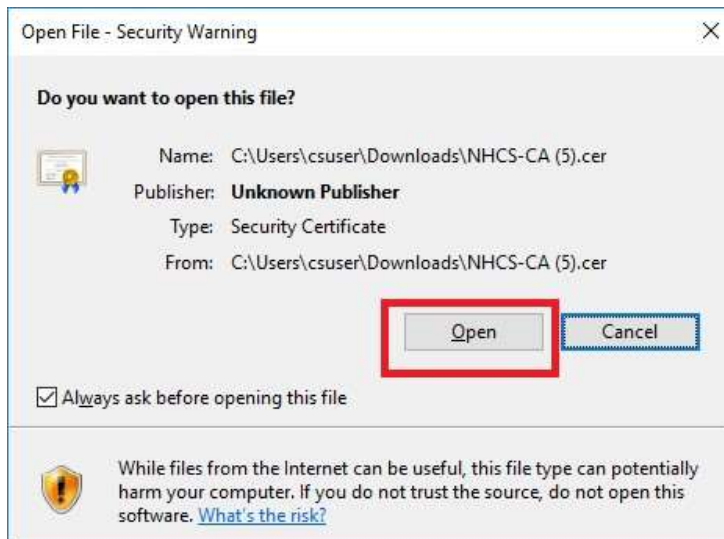
Enter your NHCS domain credentials when prompted in the screen below and click **Sign On**. (First.Last, the same username and password you sign into your school device with)



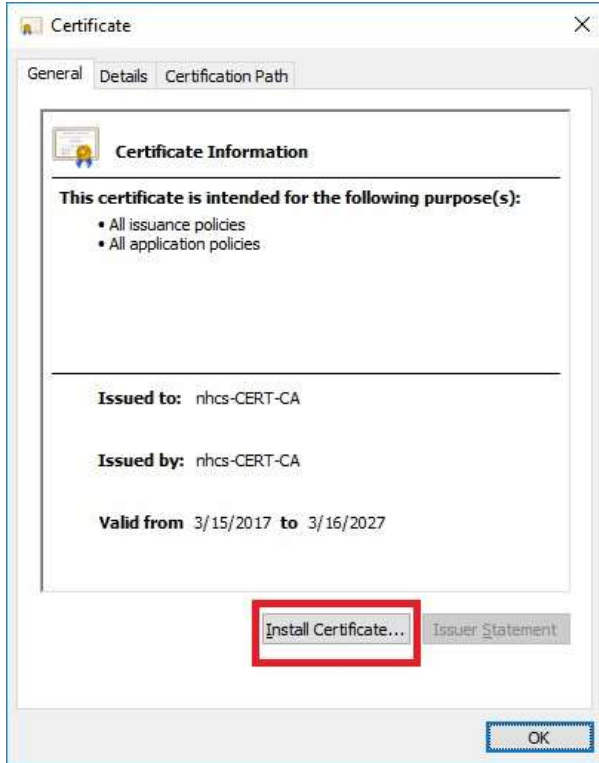
Click on the **Install Certificate** link.



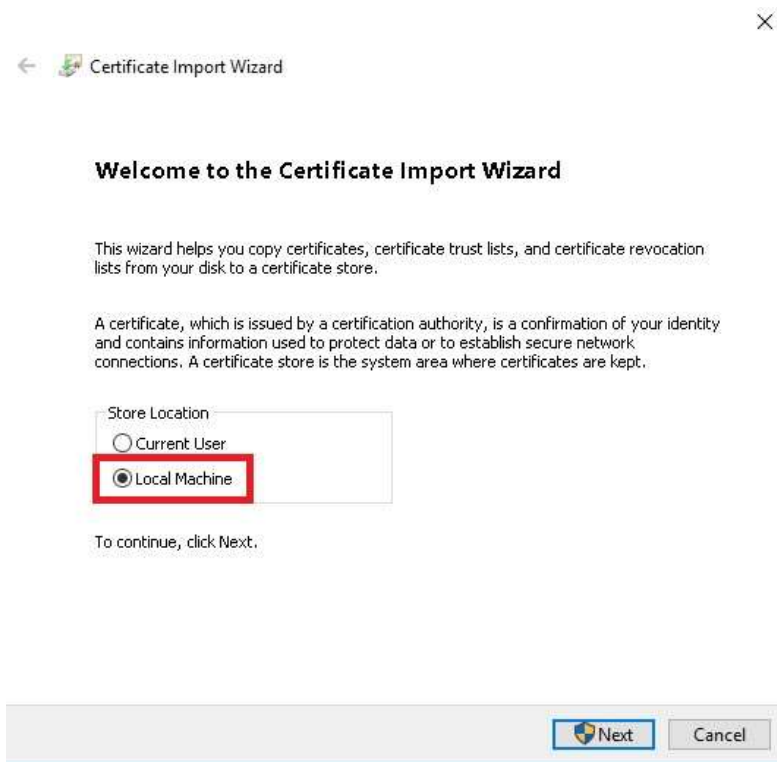
Next, open the file and select **Open** as shown highlighted in red.



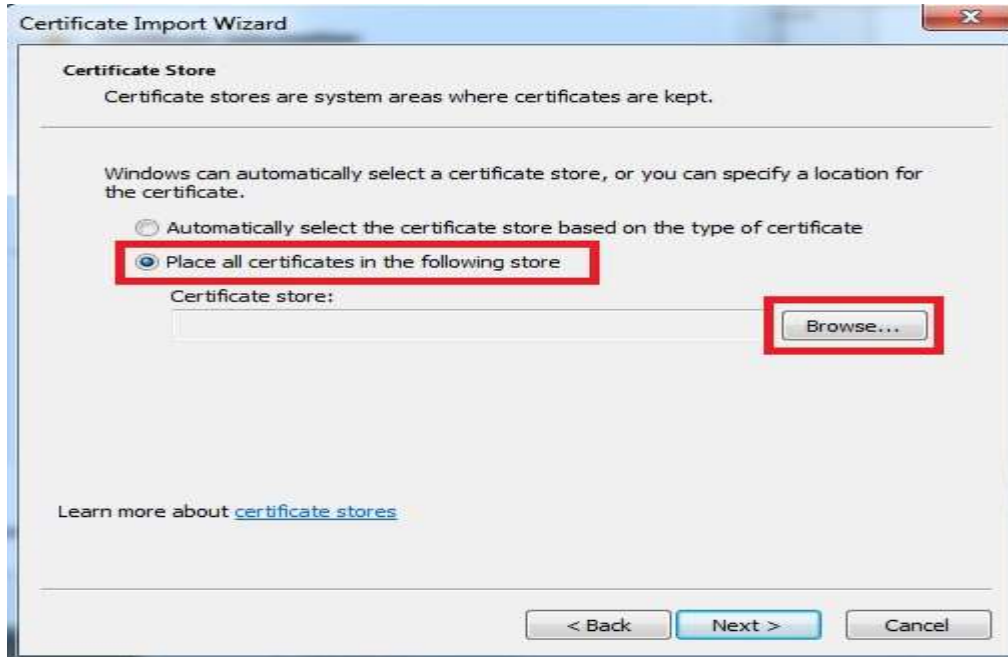
Click on **Install Certificate**.



Select **Local Machine** and select **Next**.



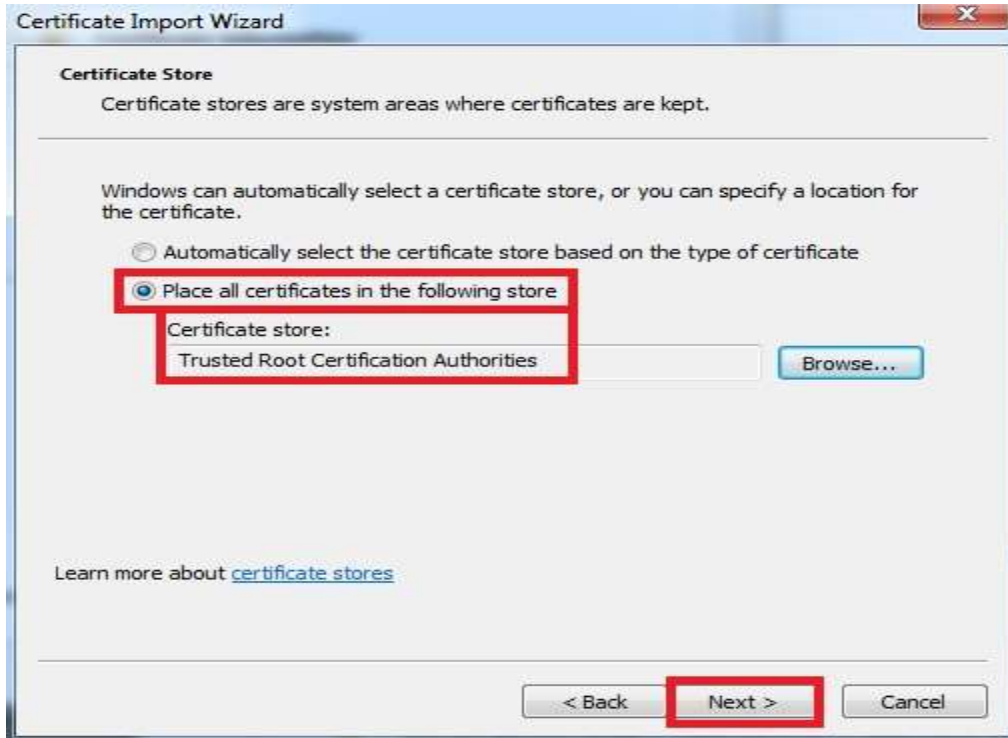
Click the button **Place all certificates in the following store**, then click **Browse**.



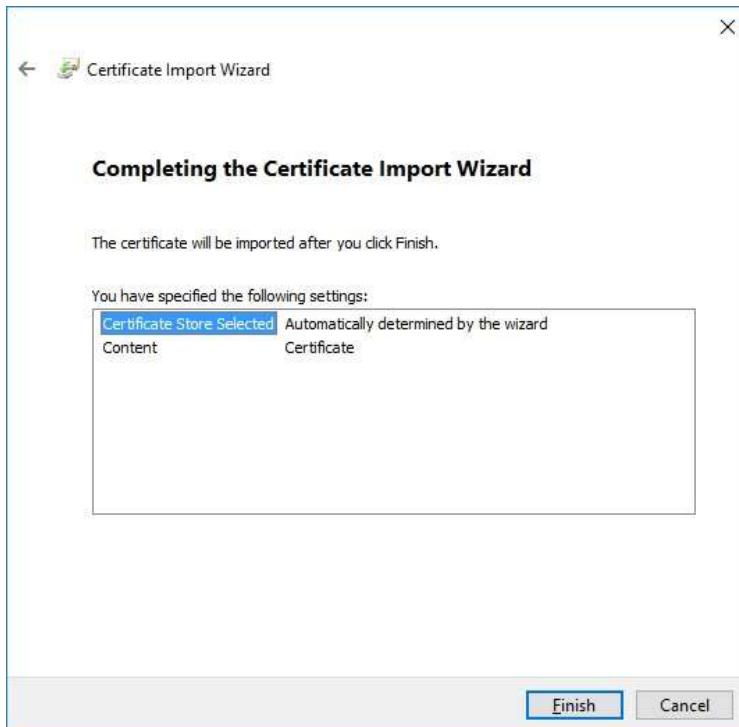
In the Select Certificate Store, click on **Trusted Root Certification Authorities** then click **OK**.



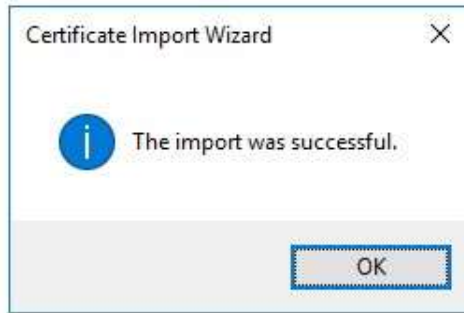
Back at the Certificate Import Wizard screen, click **Next**.



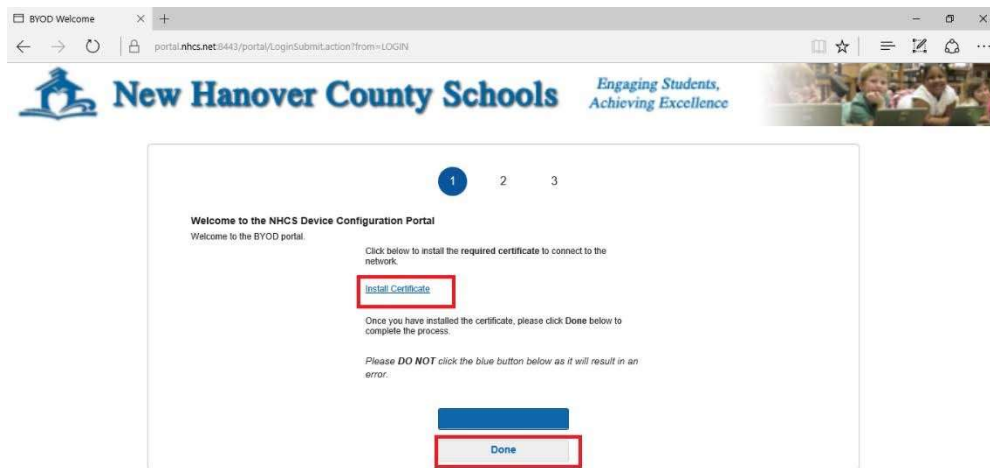
Click **Finish** as shown below.



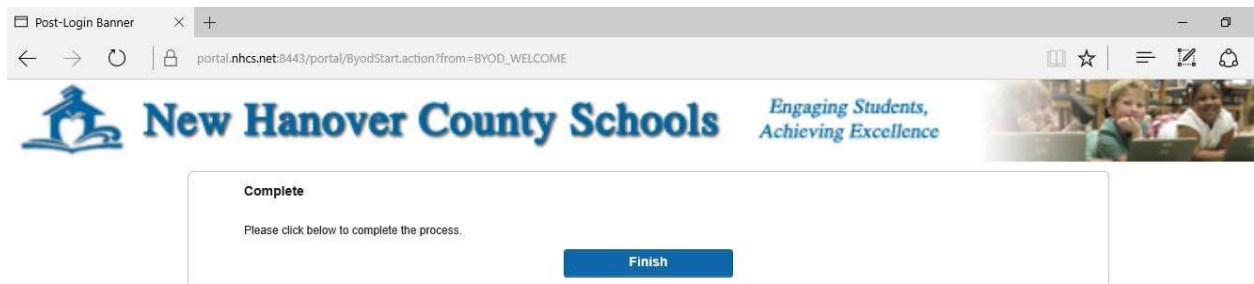
Click **OK**.



Once the certificate has installed, select **Done** as shown below. **DO NOT CLICK THE BLUE BUTTON!**



Click **Finish**.

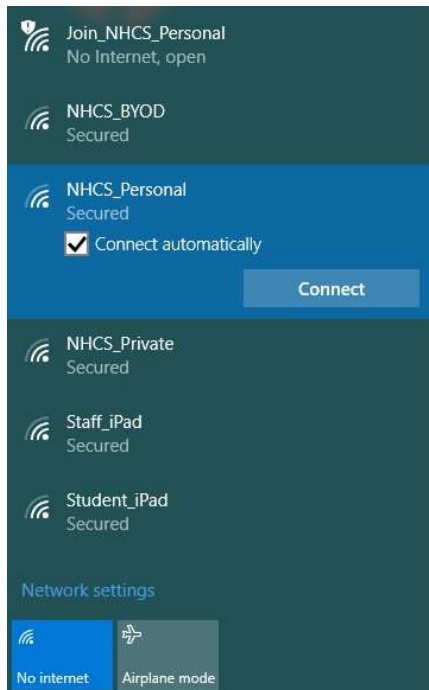


Once you have clicked on Finish you will follow as prompted below.

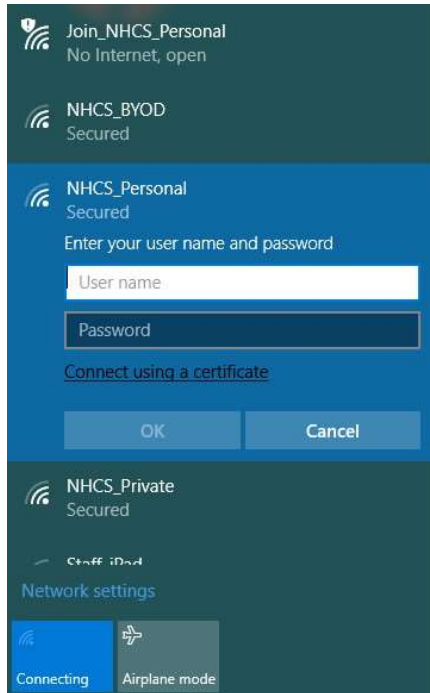
NHCS_PERSONAL WIFI INSTRUCTIONS



Click on the WiFi connections icon in the bottom right hand corner, select **NHCS_PERSONAL**, check **Connect Automatically**, and click **Connect**.



When prompted as show below, enter your NHCS domain credentials once again for the username and select **OK**. (First.Last, the same username and password you sign into your school device with)



Finally, when prompted as shown below you will click on **Connect** and you are now connected to the **NHCS_Personal** Wireless Network. To ensure connectivity, please logon to www.nhcs.net or any acceptable website.

