



WELCOME TO FIELDSTONE MIDDLE SCHOOL

To Access the School Website:

Search for <https://www.montvalek8.org/>

Click on the “Our Schools” tab on the top of your screen.

Click on “*Fieldstone Middle School*” from the drop-down menu.

How to Register:

On the bottom left of the screen, select “*Registration Forms.*” Print out the packet for the appropriate grade level (5th – 8th) including the checklist and the Health Office Information. Fill out all documents completely using the checklist.

The Registration Packet can also be accessed from the Parents/Students tab.

Information (Supply Lists, Wednesday Folder, Morning Announcements):

On the FMS page, click on Parents/Students drop-down menu.

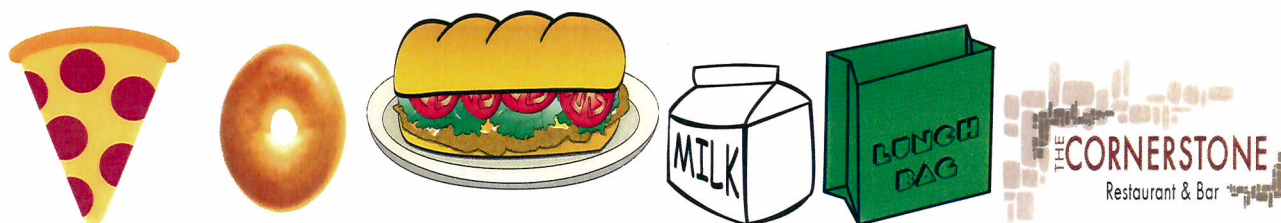
Select the information you are seeking from the menu.

Every Wednesday, you will receive an email from Fieldstone with important information regarding the school and community. Please be sure to review this information as it may include forms or permission slips for upcoming events.

Summer Learning Website:

On the Fieldstone home page you will find a link to Summer suggested and/or required assignments in both Math and Language Arts sorted by grade level. Follow the links and print out as necessary.

FIELDSTONE MIDDLE SCHOOL SCHOOL LUNCH PROGRAM



Milk Orders:

Milk is offered during lunch daily. Google forms will be made available during the month of August.

PTO Lunch Program Mondays & Fridays:

The Montvale PTO sponsors a school lunch program - on Mondays pizza is served and on Fridays bagels/sandwiches/salads are served. There are two sessions - the first session which begins in September will be open in August. Check the website periodically to be sure you order on time.

For more information on the PTO lunch program:

Search for <https://www.montvalek8.org/>

Click on the "Community" tab on the top of the District Home Page and select "Montvale PTO" from the drop-down menu. At the top of the PTO page click on "More Info" tab. Select "PTO School Lunch Program."

Cornerstone Lunch Program Tuesday thru Thursday:

Cornerstone Restaurant in Hillsdale provides a hot lunch program for our students on Tues-Wed-Thurs. For more information about ordering, <https://www.thecornerstonenj.com/> and click on "LunchWorks."

Daily Schedule Information and Drop-Off/Pick-Up Procedures:

On the Fieldstone School page, select School Info. In the drop-down menu, click on Daily Schedules. Also under School Info, in the drop-down menu click on Drop-Off/Pick-Up

Bus Information:

Please contact Mrs. Barbara Nolan in the Business Office at 201-391-6226

Montvale Child Care Program (MCC):

On the Fieldstone School page, click on the Parents/Students tab. Click on Montvale Child Care Program “Montvale Child Care Program” link from the drop-down menu. There is also a direct link in the center of the Fieldstone page.

Montvale Summer Institute (MSI):

On the District Home page, select School Services. In the drop-down menu, click on Summer Institute. Find information for the summer programs available, registration, FAQ's, and contact information.

1:1 Chromebook Initiative:

For grades 6-8 there is a 1:1 Chromebook Initiative. Please be sure to bring a check/cash in the amount of \$45 for device insurance. Only students who have paid for insurance will be able to bring the device home. Checks should be made payable to: **Student Activities Account**.



Montvale Public Schools

2020-2021 School Calendar

****Revised 7/20/20****

<div>Aug./Sept. 2020</div> <table><tr><td>S</td><td>M</td><td>T</td><td>W</td><td>T</td><td>F</td><td>S</td></tr><tr><td></td><td></td><td></td><td></td><td></td><td></td><td>28 29</td></tr><tr><td>30</td><td>31</td><td>1</td><td>2</td><td>3</td><td>4</td><td>5</td></tr><tr><td>6</td><td>7</td><td>8</td><td>9</td><td>10</td><td>11</td><td>12</td></tr><tr><td>13</td><td>14</td><td>15</td><td>16</td><td>17</td><td>18</td><td>19</td></tr><tr><td>20</td><td>21</td><td>22</td><td>23</td><td>24</td><td>25</td><td>26</td></tr><tr><td>27</td><td>28</td><td>29</td><td>30</td><td></td><td></td><td></td></tr></table>	S	M	T	W	T	F	S							28 29	30	31	1	2	3	4	5	6	7	8	9	10	11	12	13	14	15	16	17	18	19	20	21	22	23	24	25	26	27	28	29	30				<div>October 2020</div> <table><tr><td>S</td><td>M</td><td>T</td><td>W</td><td>T</td><td>F</td><td>S</td></tr><tr><td></td><td></td><td></td><td></td><td></td><td></td><td></td></tr><tr><td></td><td></td><td></td><td></td><td></td><td>1</td><td>2</td></tr><tr><td>4</td><td>5</td><td>6</td><td>7</td><td>8</td><td>9</td><td>10</td></tr><tr><td>11</td><td>12</td><td>13</td><td>14</td><td>15</td><td>16</td><td>17</td></tr><tr><td>18</td><td>19</td><td>20</td><td>21</td><td>22</td><td>23</td><td>24</td></tr><tr><td>25</td><td>26</td><td>27</td><td>28</td><td>29</td><td>30</td><td>31</td></tr></table>	S	M	T	W	T	F	S													1	2	4	5	6	7	8	9	10	11	12	13	14	15	16	17	18	19	20	21	22	23	24	25	26	27	28	29	30	31	<div>November 2020</div> <table><tr><td>S</td><td>M</td><td>T</td><td>W</td><td>T</td><td>F</td><td>S</td></tr><tr><td>1</td><td>2</td><td>3</td><td>4</td><td>5</td><td>6</td><td>7</td></tr><tr><td>8</td><td>9</td><td>10</td><td>11</td><td>12</td><td>13</td><td>14</td></tr><tr><td>15</td><td>16</td><td>17</td><td>18</td><td>19</td><td>20</td><td>21</td></tr><tr><td>22</td><td>23</td><td>24</td><td>25</td><td>26</td><td>27</td><td>28</td></tr><tr><td>29</td><td>30</td><td></td><td></td><td></td><td></td><td></td></tr></table>	S	M	T	W	T	F	S	1	2	3	4	5	6	7	8	9	10	11	12	13	14	15	16	17	18	19	20	21	22	23	24	25	26	27	28	29	30						<div>December 2020</div> <table><tr><td>S</td><td>M</td><td>T</td><td>W</td><td>T</td><td>F</td><td>S</td></tr><tr><td></td><td></td><td></td><td></td><td></td><td></td><td></td></tr><tr><td></td><td></td><td>1</td><td>2</td><td>3</td><td>4</td><td>5</td></tr><tr><td>6</td><td>7</td><td>8</td><td>9</td><td>10</td><td>11</td><td>12</td></tr><tr><td>13</td><td>14</td><td>15</td><td>16</td><td>17</td><td>18</td><td>19</td></tr><tr><td>20</td><td>21</td><td>22</td><td>23</td><td>24</td><td>25</td><td>26</td></tr><tr><td>27</td><td>28</td><td>29</td><td>30</td><td>31</td><td></td><td></td></tr></table>	S	M	T	W	T	F	S										1	2	3	4	5	6	7	8	9	10	11	12	13	14	15	16	17	18	19	20	21	22	23	24	25	26	27	28	29	30	31		
S	M	T	W	T	F	S																																																																																																																																																																																										
						28 29																																																																																																																																																																																										
30	31	1	2	3	4	5																																																																																																																																																																																										
6	7	8	9	10	11	12																																																																																																																																																																																										
13	14	15	16	17	18	19																																																																																																																																																																																										
20	21	22	23	24	25	26																																																																																																																																																																																										
27	28	29	30																																																																																																																																																																																													
S	M	T	W	T	F	S																																																																																																																																																																																										
					1	2																																																																																																																																																																																										
4	5	6	7	8	9	10																																																																																																																																																																																										
11	12	13	14	15	16	17																																																																																																																																																																																										
18	19	20	21	22	23	24																																																																																																																																																																																										
25	26	27	28	29	30	31																																																																																																																																																																																										
S	M	T	W	T	F	S																																																																																																																																																																																										
1	2	3	4	5	6	7																																																																																																																																																																																										
8	9	10	11	12	13	14																																																																																																																																																																																										
15	16	17	18	19	20	21																																																																																																																																																																																										
22	23	24	25	26	27	28																																																																																																																																																																																										
29	30																																																																																																																																																																																															
S	M	T	W	T	F	S																																																																																																																																																																																										
		1	2	3	4	5																																																																																																																																																																																										
6	7	8	9	10	11	12																																																																																																																																																																																										
13	14	15	16	17	18	19																																																																																																																																																																																										
20	21	22	23	24	25	26																																																																																																																																																																																										
27	28	29	30	31																																																																																																																																																																																												
<div>January 2021</div> <table><tr><td>S</td><td>M</td><td>T</td><td>W</td><td>T</td><td>F</td><td>S</td></tr><tr><td></td><td></td><td></td><td></td><td></td><td>1</td><td>2</td></tr><tr><td>3</td><td>4</td><td>5</td><td>6</td><td>7</td><td>8</td><td>9</td></tr><tr><td>10</td><td>11</td><td>12</td><td>13</td><td>14</td><td>15</td><td>16</td></tr><tr><td>17</td><td>18</td><td>19</td><td>20</td><td>21</td><td>22</td><td>23</td></tr><tr><td>24</td><td>25</td><td>26</td><td>27</td><td>28</td><td>29</td><td>30</td></tr><tr><td>31</td><td></td><td></td><td></td><td></td><td></td><td></td></tr></table>	S	M	T	W	T	F	S						1	2	3	4	5	6	7	8	9	10	11	12	13	14	15	16	17	18	19	20	21	22	23	24	25	26	27	28	29	30	31							<div>February 2021</div> <table><tr><td>S</td><td>M</td><td>T</td><td>W</td><td>T</td><td>F</td><td>S</td></tr><tr><td></td><td></td><td></td><td></td><td></td><td></td><td></td></tr><tr><td></td><td></td><td>1</td><td>2</td><td>3</td><td>4</td><td>5</td></tr><tr><td>7</td><td>8</td><td>9</td><td>10</td><td>11</td><td>12</td><td>13</td></tr><tr><td>14</td><td>15</td><td>16</td><td>17</td><td>18</td><td>19</td><td>20</td></tr><tr><td>21</td><td>22</td><td>23</td><td>24</td><td>25</td><td>26</td><td>27</td></tr><tr><td>28</td><td></td><td></td><td></td><td></td><td></td><td></td></tr></table>	S	M	T	W	T	F	S										1	2	3	4	5	7	8	9	10	11	12	13	14	15	16	17	18	19	20	21	22	23	24	25	26	27	28							<div>March 2021</div> <table><tr><td>S</td><td>M</td><td>T</td><td>W</td><td>T</td><td>F</td><td>S</td></tr><tr><td></td><td>1</td><td>2</td><td>3</td><td>4</td><td>5</td><td>6</td></tr><tr><td>7</td><td>8</td><td>9</td><td>10</td><td>11</td><td>12</td><td>13</td></tr><tr><td>14</td><td>15</td><td>16</td><td>17</td><td>18</td><td>19</td><td>20</td></tr><tr><td>21</td><td>22</td><td>23</td><td>24</td><td>25</td><td>26</td><td>27</td></tr><tr><td>28</td><td>29</td><td>30</td><td>31</td><td></td><td></td><td></td></tr></table>	S	M	T	W	T	F	S		1	2	3	4	5	6	7	8	9	10	11	12	13	14	15	16	17	18	19	20	21	22	23	24	25	26	27	28	29	30	31				<div>April 2021</div> <table><tr><td>S</td><td>M</td><td>T</td><td>W</td><td>T</td><td>F</td><td>S</td></tr><tr><td></td><td></td><td></td><td></td><td>1</td><td>2</td><td>3</td></tr><tr><td>4</td><td>5</td><td>6</td><td>7</td><td>8</td><td>9</td><td>10</td></tr><tr><td>11</td><td>12</td><td>13</td><td>14</td><td>15</td><td>16</td><td>17</td></tr><tr><td>18</td><td>19</td><td>20</td><td>21</td><td>22</td><td>23</td><td>24</td></tr><tr><td>25</td><td>26</td><td>27</td><td>28</td><td>29</td><td>30</td><td></td></tr></table>	S	M	T	W	T	F	S					1	2	3	4	5	6	7	8	9	10	11	12	13	14	15	16	17	18	19	20	21	22	23	24	25	26	27	28	29	30								
S	M	T	W	T	F	S																																																																																																																																																																																										
					1	2																																																																																																																																																																																										
3	4	5	6	7	8	9																																																																																																																																																																																										
10	11	12	13	14	15	16																																																																																																																																																																																										
17	18	19	20	21	22	23																																																																																																																																																																																										
24	25	26	27	28	29	30																																																																																																																																																																																										
31																																																																																																																																																																																																
S	M	T	W	T	F	S																																																																																																																																																																																										
		1	2	3	4	5																																																																																																																																																																																										
7	8	9	10	11	12	13																																																																																																																																																																																										
14	15	16	17	18	19	20																																																																																																																																																																																										
21	22	23	24	25	26	27																																																																																																																																																																																										
28																																																																																																																																																																																																
S	M	T	W	T	F	S																																																																																																																																																																																										
	1	2	3	4	5	6																																																																																																																																																																																										
7	8	9	10	11	12	13																																																																																																																																																																																										
14	15	16	17	18	19	20																																																																																																																																																																																										
21	22	23	24	25	26	27																																																																																																																																																																																										
28	29	30	31																																																																																																																																																																																													
S	M	T	W	T	F	S																																																																																																																																																																																										
				1	2	3																																																																																																																																																																																										
4	5	6	7	8	9	10																																																																																																																																																																																										
11	12	13	14	15	16	17																																																																																																																																																																																										
18	19	20	21	22	23	24																																																																																																																																																																																										
25	26	27	28	29	30																																																																																																																																																																																											
<div>May 2021</div> <table><tr><td>S</td><td>M</td><td>T</td><td>W</td><td>T</td><td>F</td><td>S</td></tr><tr><td></td><td></td><td></td><td></td><td></td><td></td><td>1</td></tr><tr><td>2</td><td>3</td><td>4</td><td>5</td><td>6</td><td>7</td><td>8</td></tr><tr><td>9</td><td>10</td><td>11</td><td>12</td><td>13</td><td>14</td><td>15</td></tr><tr><td>16</td><td>17</td><td>18</td><td>19</td><td>20</td><td>21</td><td>22</td></tr><tr><td>23</td><td>24</td><td>25</td><td>26</td><td>27</td><td>28</td><td>29</td></tr><tr><td>30</td><td>31</td><td></td><td></td><td></td><td></td><td></td></tr></table>	S	M	T	W	T	F	S							1	2	3	4	5	6	7	8	9	10	11	12	13	14	15	16	17	18	19	20	21	22	23	24	25	26	27	28	29	30	31						<div>June 2021</div> <table><tr><td>S</td><td>M</td><td>T</td><td>W</td><td>T</td><td>F</td><td>S</td></tr><tr><td></td><td></td><td>1</td><td>2</td><td>3</td><td>4</td><td>5</td></tr><tr><td>6</td><td>7</td><td>8</td><td>9</td><td>10</td><td>11</td><td>12</td></tr><tr><td>13</td><td>14</td><td>15</td><td>16</td><td>17</td><td>18</td><td>19</td></tr><tr><td>20</td><td>21</td><td>22</td><td>23</td><td>24</td><td>25</td><td>26</td></tr><tr><td>27</td><td>28</td><td>29</td><td>30</td><td></td><td></td><td></td></tr></table>	S	M	T	W	T	F	S			1	2	3	4	5	6	7	8	9	10	11	12	13	14	15	16	17	18	19	20	21	22	23	24	25	26	27	28	29	30				<div>SCHOOL CALENDAR KEY</div> <table><tr><td></td><td>Professional Day; Schools Closed for Students</td></tr><tr><td></td><td>Schools Closed for Students and Staff</td></tr><tr><td></td><td>Possible Emergency Closing Make-up Day *</td></tr><tr><td></td><td>Single-Session Day</td></tr></table>		Professional Day; Schools Closed for Students		Schools Closed for Students and Staff		Possible Emergency Closing Make-up Day *		Single-Session Day	<div>Total Number of School Days</div> <table><tr><td></td><td>Teachers</td><td>Students</td></tr><tr><td>Aug</td><td>1</td><td>0</td></tr><tr><td>Sept</td><td>20</td><td>18</td></tr><tr><td>Oct</td><td>22</td><td>21</td></tr><tr><td>Nov</td><td>17</td><td>17</td></tr><tr><td>Dec</td><td>17</td><td>17</td></tr><tr><td>Jan</td><td>20</td><td>19</td></tr><tr><td>Feb</td><td>18</td><td>18</td></tr><tr><td>March</td><td>20</td><td>20</td></tr><tr><td>April</td><td>19</td><td>19</td></tr><tr><td>May</td><td>19</td><td>19</td></tr><tr><td>June</td><td>13</td><td>13</td></tr><tr><td>Totals</td><td>186</td><td>181</td></tr></table>		Teachers	Students	Aug	1	0	Sept	20	18	Oct	22	21	Nov	17	17	Dec	17	17	Jan	20	19	Feb	18	18	March	20	20	April	19	19	May	19	19	June	13	13	Totals	186	181																																																			
S	M	T	W	T	F	S																																																																																																																																																																																										
						1																																																																																																																																																																																										
2	3	4	5	6	7	8																																																																																																																																																																																										
9	10	11	12	13	14	15																																																																																																																																																																																										
16	17	18	19	20	21	22																																																																																																																																																																																										
23	24	25	26	27	28	29																																																																																																																																																																																										
30	31																																																																																																																																																																																															
S	M	T	W	T	F	S																																																																																																																																																																																										
		1	2	3	4	5																																																																																																																																																																																										
6	7	8	9	10	11	12																																																																																																																																																																																										
13	14	15	16	17	18	19																																																																																																																																																																																										
20	21	22	23	24	25	26																																																																																																																																																																																										
27	28	29	30																																																																																																																																																																																													
	Professional Day; Schools Closed for Students																																																																																																																																																																																															
	Schools Closed for Students and Staff																																																																																																																																																																																															
	Possible Emergency Closing Make-up Day *																																																																																																																																																																																															
	Single-Session Day																																																																																																																																																																																															
	Teachers	Students																																																																																																																																																																																														
Aug	1	0																																																																																																																																																																																														
Sept	20	18																																																																																																																																																																																														
Oct	22	21																																																																																																																																																																																														
Nov	17	17																																																																																																																																																																																														
Dec	17	17																																																																																																																																																																																														
Jan	20	19																																																																																																																																																																																														
Feb	18	18																																																																																																																																																																																														
March	20	20																																																																																																																																																																																														
April	19	19																																																																																																																																																																																														
May	19	19																																																																																																																																																																																														
June	13	13																																																																																																																																																																																														
Totals	186	181																																																																																																																																																																																														
<div>*Three emergency closing days are now built into the school calendar. If schools are closed for inclement weather or other emergencies, then those days will be made up on April 5, May 28, June 1 (in this order). If no emergency closings take place, schools will be closed for students and teachers on these days.</div> <div>School closing for inclement weather or other emergencies beyond the plan outlined may require the extension of attendance days for students and teachers by shortening spring vacation.</div> <div>Board Approved: November 25, 2019</div> <div>Revision Approved: July 20, 2020</div>			<div>2020</div> <div>Aug 31; Sept. 1 Orientation; Staff only</div> <div>Sept. 2</div> <div>Sept. 3 & 4 Schools open for Students: Single-Session Days</div> <div>Sept. 7 Labor Day; Schools Closed</div> <div>Sept. 28 Religious Holiday; Schools Closed</div> <div>Oct. 12 Professional Day; Schools Closed for Students</div> <div>Nov. 2 & 3 Parent/Teacher Conferences; Single-Session Day</div> <div>Nov. 5 & 6 NJEA Convention; Schools Closed</div> <div>Nov. 25 Single-Session Day</div> <div>Nov. 26&27 Thanksgiving Recess</div> <div>Dec. 23 Single-Session Day</div> <div>Dec. 24-Jan.1 Winter Recess</div>			<div>2021</div> <div>Jan. 4 Schools Reopen for Students and Staff</div> <div>Jan. 18 Professional Day; Schools Closed for Students</div> <div>Feb. 15&16 Mid-Winter Recess</div> <div>March 29 - April 2 Spring Recess; Schools Closed</div> <div>April 5 Spring Recess; Schools Closed (possible emergency closing make-up day)</div> <div>May 28 Memorial Day; Schools Closed (possible emergency closing make-up day)</div> <div>May 31 Memorial Day; Schools Closed</div> <div>June 1 Memorial Day; Schools Closed (possible emergency closing make-up day)</div> <div>June 3 Parent/Teacher Conferences; Single Session Day</div> <div>June 17&18 Last Days of School for Students; Single-Session Days</div>																																																																																																																																																																																										

Fieldstone Middle School Morning Drop-Off Procedures

Students should not be dropped off earlier than 8:15 AM unless they have an appointment with a staff member or are participating in a club.

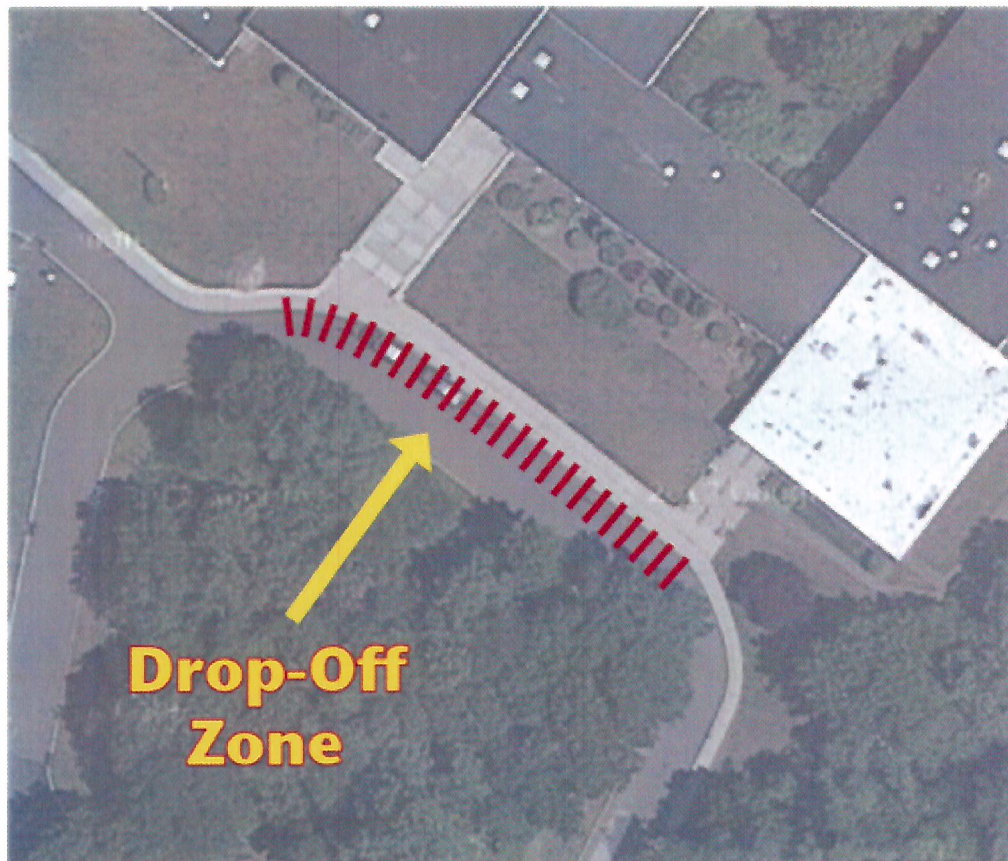
Cars arriving should:

Drive straight into the circular driveway.

Pull all the way up to the second entrance to drop off child(ren).

Avoid passing vehicles or buses.

Students should not be dropped off in the staff parking lot. This creates a dangerous situation for both students and arriving staff members.



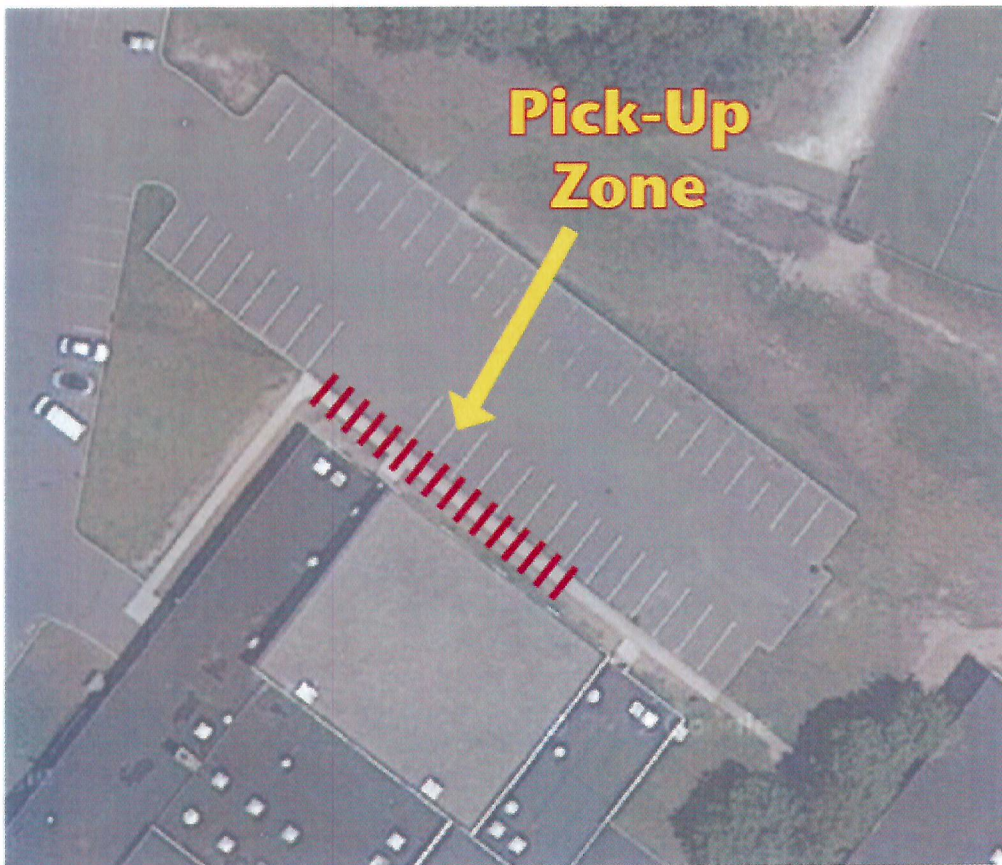
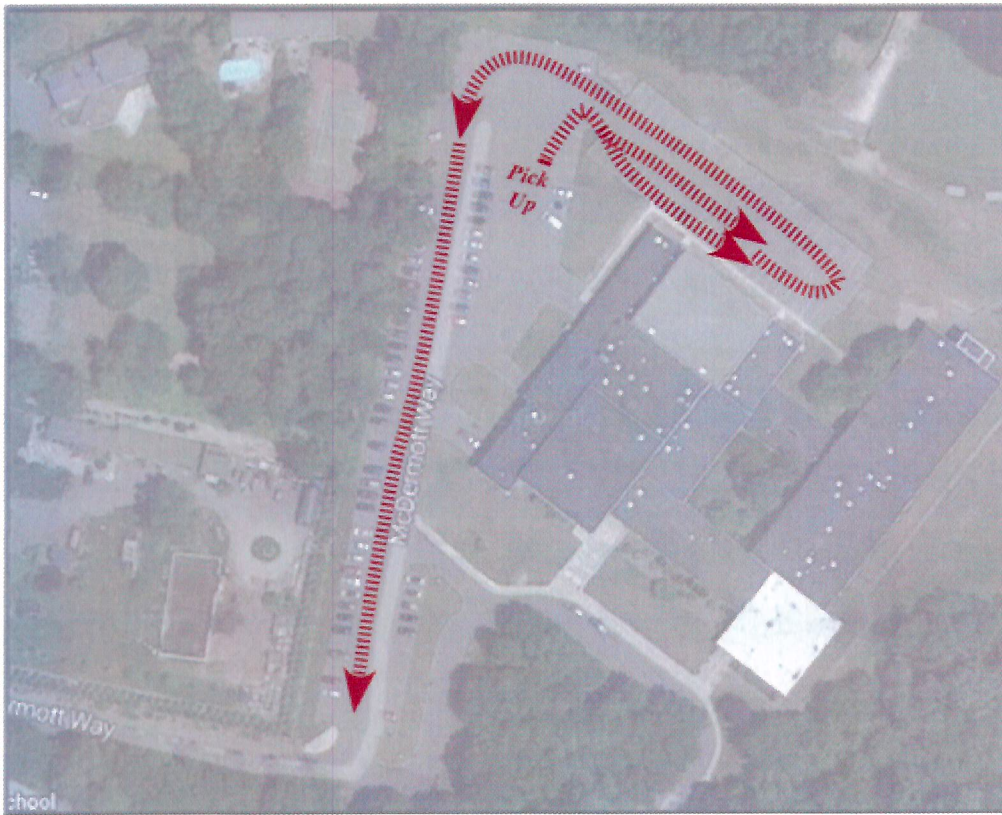
Fieldstone Middle School Afternoon Pick-Up Procedures

The Pick Up Zone is on the sidewalk outside of the gym, not on the side of the building.

All children are to be picked up in the back of the school adjacent to the gym.

Children should not be picked up from a parking spot or from the side of the building.

Children should always wait for the supervising teacher in order to be crossed to a waiting vehicle.



Fieldstone Middle School

Daily Time Schedule

Teachers Report	8:25 AM
Students Admitted	8:35 AM
Tardy	8:42 AM

Homeroom	8:42 – 8:48 AM
Period One	8:50 – 9:30 AM
Period Two	9:32 – 10:12 AM
Period Three	10:14 – 10:54 AM
Period Four	10:56 – 11:36 AM
Period Five	11:38 – 12:18 PM
Period Six	12:20 – 1:00 PM

Lunch

Period Seven	1:02 – 1:42 PM
Period Eight	1:44 – 2:24 PM
Period Nine	2:26 – 3:06 PM

Dismissal	3:06 PM
-----------	---------

* A bell system will be used to signal the beginning and ending of each academic period.

Fieldstone Middle School

One-Session Day Schedule

The basic design of the one-session day schedule is to have students attend all their daily assigned classes.

No lunch is served on a one-session day.

Please refer to the following schedule for a one-session day.

Homeroom	8:42 - 8:48 AM
Period 1	8:50 - 9:19 AM
Period 2	9:21 - 9:50 AM
Period 3	9:52 - 10:21 AM
Period 4	10:23 - 10:52 AM
Period 5	10:54 - 11:23 AM
Period 7	11:25 - 11:54 PM
Period 8	11:56 - 12:25 PM
Period 9	12:27 - 12:55 PM

* A bell system **will be** used to signal the beginning and ending of each academic period.

Fieldstone Middle School

Advisory Schedule

(BELLS WILL RING)

Homeroom	8:42 - 8:48
----------	-------------

Advisory	8:50 - 9:30
----------	-------------

Period 1	9:32 - 10:06
----------	--------------

Period 2	10:08 - 10:43
----------	---------------

Period 3	10:45 - 11:19
----------	---------------

Period 4	11:21 - 11:55
----------	---------------

<i>Period 6</i>	<i>11:57 - 12:37</i>
-----------------	----------------------

Lunch

Period 5	12:39 - 1:14
----------	--------------

Period 7	1:16 - 1:51
----------	-------------

Period 8	1:53 - 2:28
----------	-------------

Period 9	2:30 - 3:06
----------	-------------

Fieldstone Middle School

Delayed opening Schedule

Schedule

Homeroom	10:10 - 10:18 AM
Period 1	10:20 - 10:49 AM
Period 2	10:51 - 11:20 AM
Period 3	11:22 - 11:51 AM
Period 4	11:53 - 12:22 PM
Period 6	12:24 - 1:04 PM
	<i>(Lunch)</i>
Period 5	1:06 - 1:35 PM
Period 7	1:37 - 2:06 PM
Period 8	2:08 - 2:36 PM
Period 9	2:38 - 3:06 PM

CLUB NAME	ADVISOR	Location	Future Dates	Time
Art Club	Jennifer McCann	Art Room	Every Monday	8:00 -8:40 AM
Falcon Band/Jazz Band	Justin Nietzer	Band Room	Wednesdays, Thursdays and some Mondays	7:45-8:40 AM
Battle of the Books 5/6	Laurie Murrell	Room 124	Early December	TBD
Battle of the Books 7/8	Laurie Murrell	Room 124	Early December	TBD
Broadcasting	Pete Valois	Room 207	Monday-Friday	8:00-8:40
Chorus	Jim Quaranto	Cafe	Tuesdays and Fridays	7:50 AM -8:40 AM
Computer Club	Darlene Gonzalez and Lauren Dauria	126	Thursday	8:00 - 8:35
Creative Writing / Poetry	Lauren Dauria	126	Tuesdays	8:00 - 8:35
Drama Club	Alex Austin	TBD	TBD	TBD
Healthy Harvesters	Delia Durango	120	Wednesdays	3:06-4:00 PM
Math Counts	Jill Gelalia	108	Every Friday	8:00-8:40 AM
Model UN	Amy Hennessy/Mr. Conti	106	(Nov-Apr)	3:06-4:00 PM
Peer Tutoring Humanities	Kathy Passaro	213	Tuesdays starting October 30	3:00-4:00 PM
Peer Tutoring Math/Science	Donna Simon	213	Tuesdays starting October 16	3:00-4:00 PM
Robotics	Matt Doherty	Cafeteria	Robotics Practice Calendar	3:06-4:30 PM
Spanish Club	Darlene Gonzalez	126	Every Thursday	8:00-8:40 AM
Spanish Tutoring Club	Jodi Levy	204	Two Tuesdays each month starting in November	3:10 - 4:00 PM
Student Government	Amy Hennessy and Janice Raimondi	109	Wed Mornings - May also run on Tuesdays depending on student commitments	8:05-8:40 AM
Yearbook	Chelsea Cummings and Christina Schlemm	IMC	Wednesdays	TBD