

Hunters Creek Elementary School

Replacement School PAT Meeting #9 – 11.06.19



AGENDA

- PAT Charge & Process
- Project Schedule
- Front Entry - Revisited
- Exterior Materials
- Interiors
- Next Steps & Questions



Hunters Creek Elementary School

PAT Charge

The goal of the PAT is to ensure that parents, staff and community members have the opportunity to take part in the planning and design of the new school.

The PAT members will serve as communicators to and from the community during the schematic design and design development phases of the project and participate in discussions that will lead to recommendations. The PAT concludes its work once construction begins.

All recommendations must be in alignment with the District's Educational Specifications and Design and Construction Standards.



Hunters Creek Elementary School

PAT Charge (continued)

The PAT will **reach a proposed recommendation through consensus**.

Any concerns identified by the PAT members should immediately be brought to the attention of the SBISD Project Manager.

These **recommendations will be presented** by the project's architects:

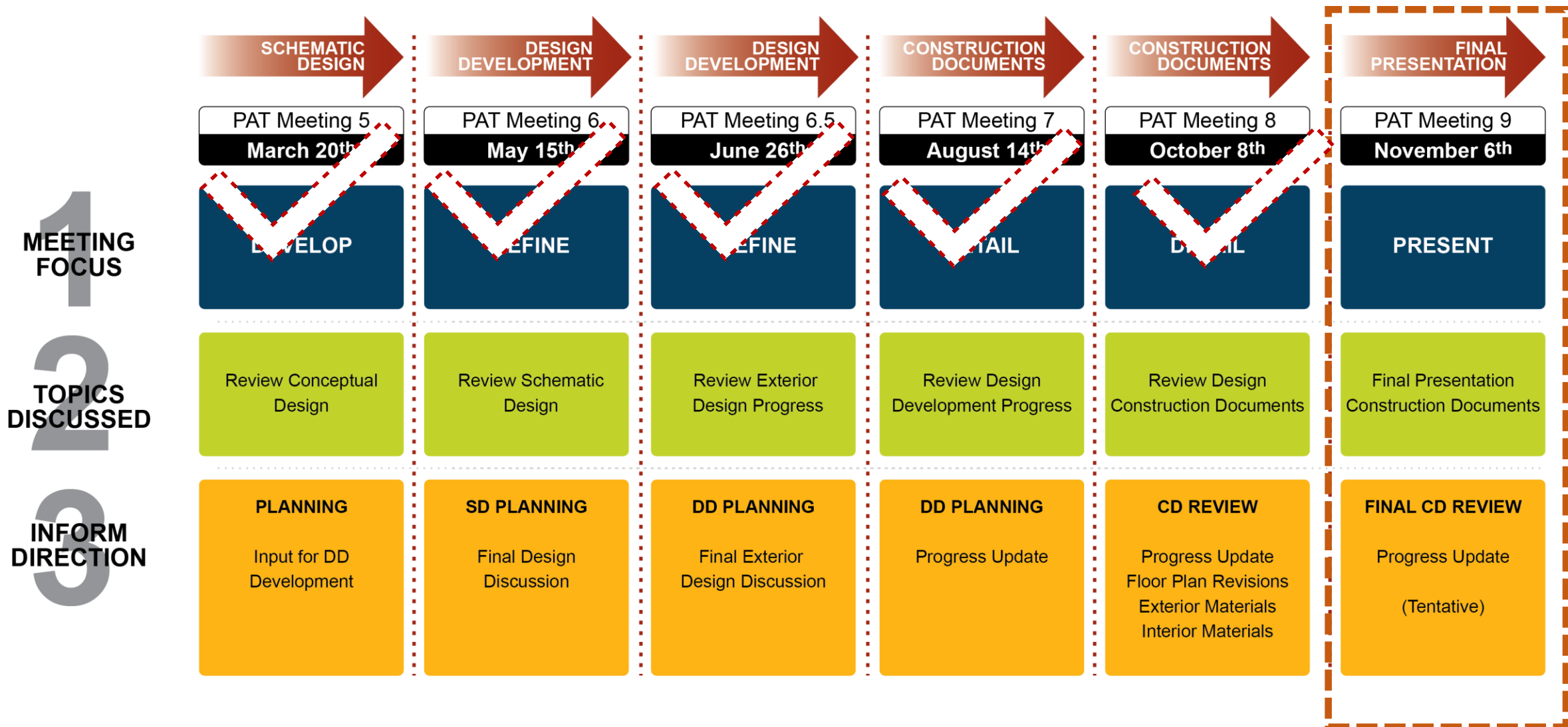
1. to the **Superintendent of Schools**, and based on approval from the Superintendent,
2. to the **Board of Trustees** for their approval.

The Board of Trustees may act upon the recommendations developed with PAT input by approving, amending, altering or not approving all or any part of the recommendations.

Hunters Creek PAT Engagement Process



Hunters Creek PAT Engagement Process





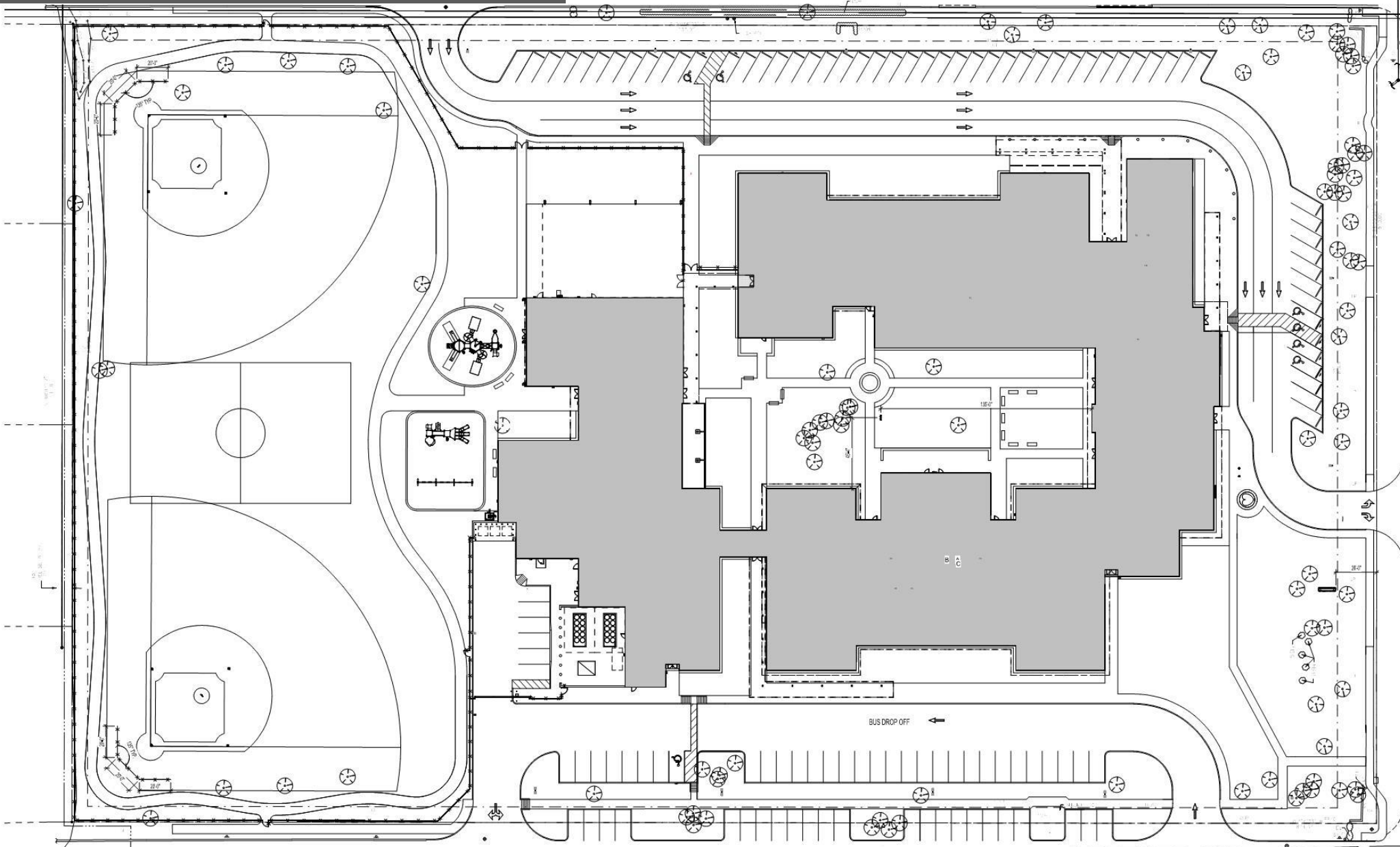
SITE PLAN

SITE PLAN

FLINT RIVER DRIVE

BEINHORN RD.

WADE HAMPTON DRIVE



FLOOR PLAN

COMPOSITE FIRST FLOOR PLAN

Department Legend

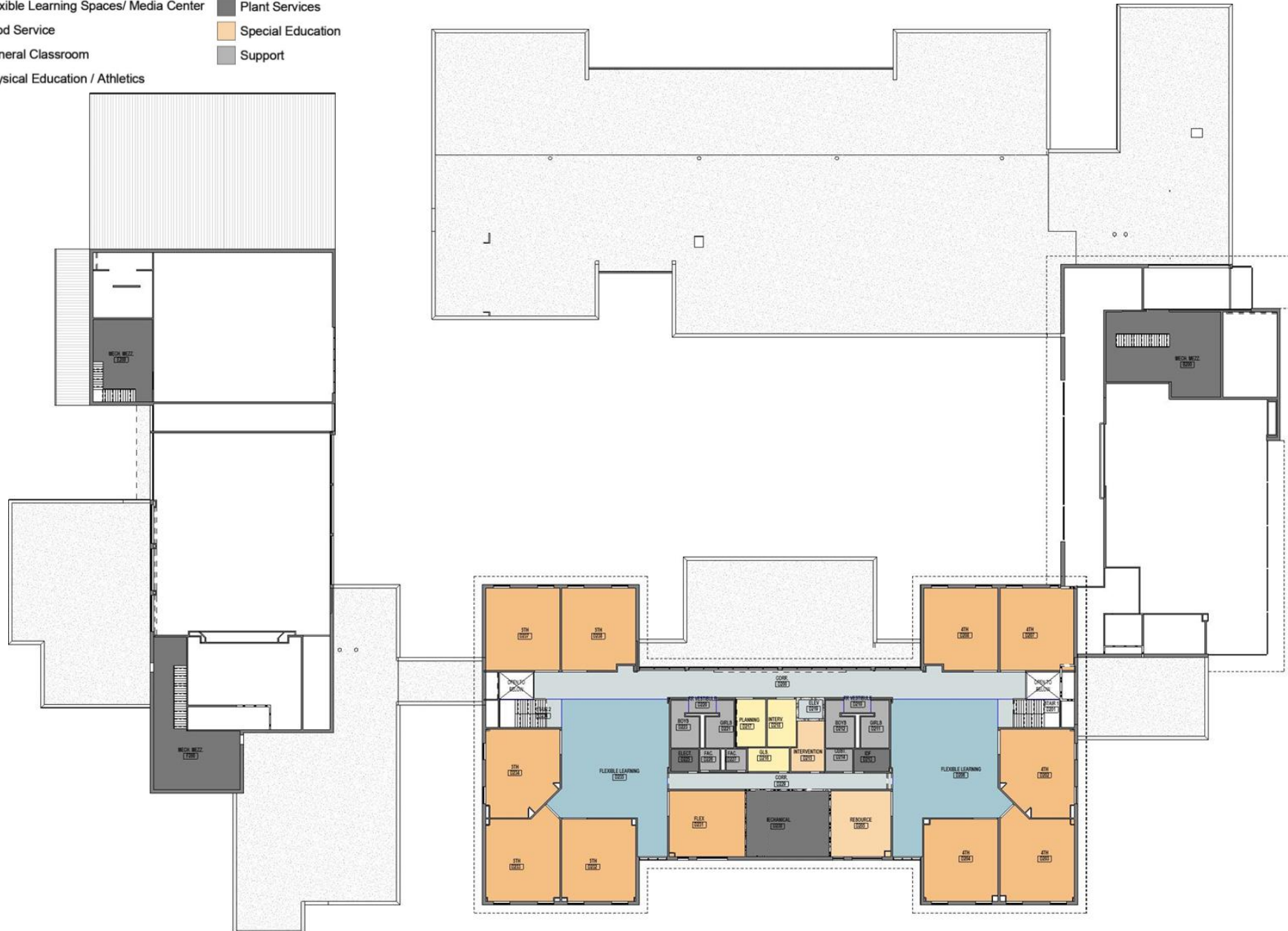
- | | | |
|----------------|--|-------------------|
| Administration | Flexible Learning Spaces/ Media Center | Plant Services |
| Circulation | Food Service | Special Education |
| Fine Arts | General Classroom | Support |
| | Physical Education / Athletics | |



COMPOSITE SECOND FLOOR PLAN

Department Legend

Administration	Flexible Learning Spaces/ Media Center	Plant Services
Circulation	Food Service	Special Education
Fine Arts	General Classroom	Support
	Physical Education / Athletics	



FRONT ENTRANCE: REVISITED

WHERE WE STARTED...



WHERE WE LEFT OFF...



FRONT ENTRY: REVISED



VOTE!



EXTERIOR

FRONT ENTRY



FRONT ENTRY



FRONT ENTRY



BUS DROP OFF: REVISED



PARENT DROP OFF



EXTERIOR MATERIALS

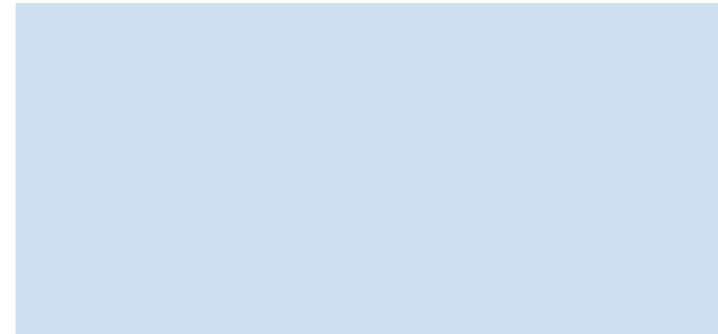
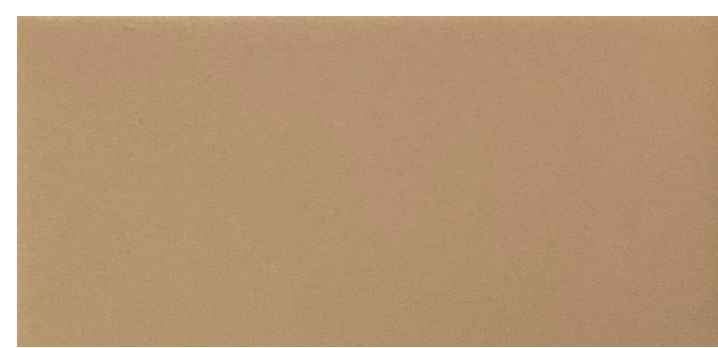
EXTERIOR MATERIALS





INTERIORS

INTERIOR COLOR SCHEME



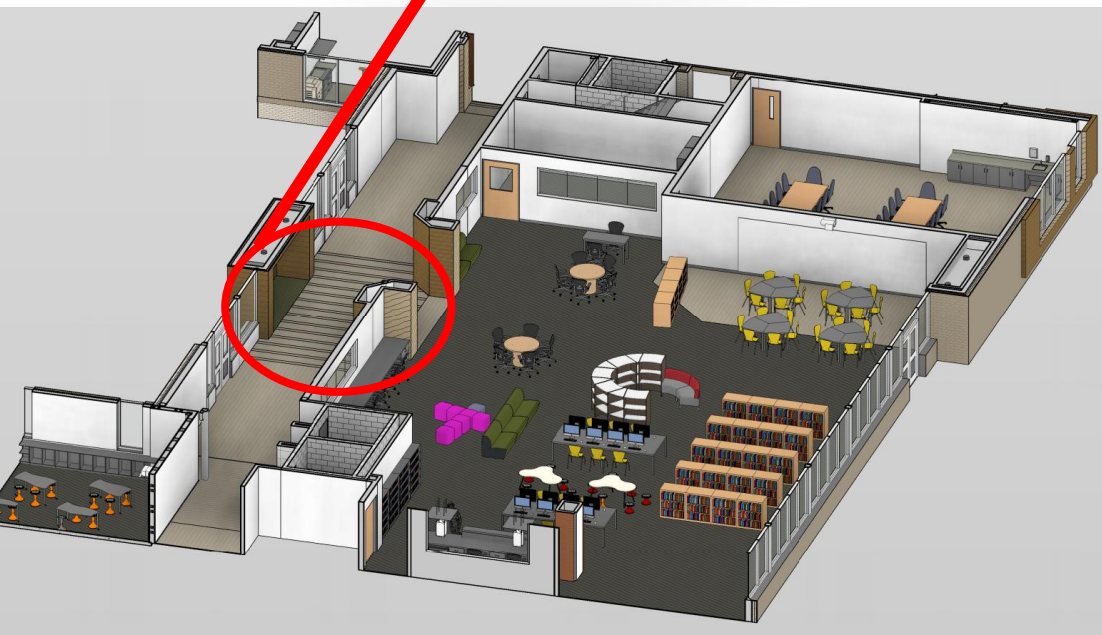
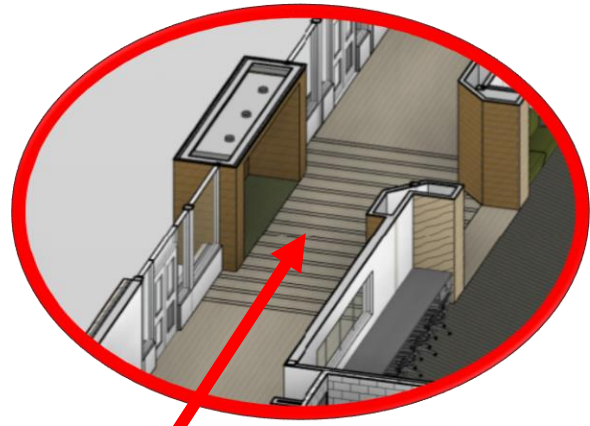
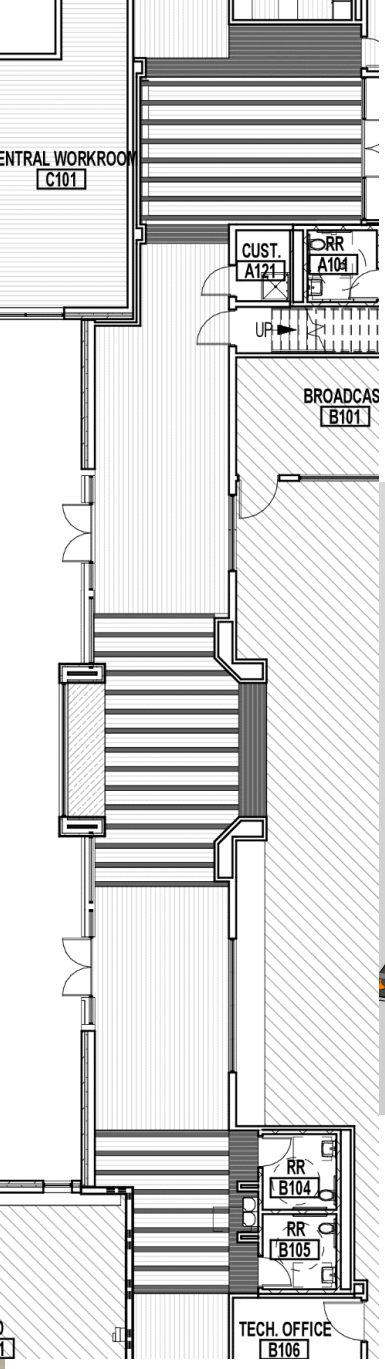
FLOOR FINISHES AND PATTERNS



ENLARGED CORRIDOR AT THE LIBRARY ENTRANCE



INTERIOR WOOD LOOK FLOOR PATTERNS



WOOD LOOK LUXURY VINYL TILE IN MAIN CORRIDORS

WOOD LOOK TILE



WOOD LOOK- LIGHT COLOR PORCELAIN TILE



WOOD LOOK- DARK COLOR PORCELAIN TILE



WOOD LOOK- LIGHT COLOR LUXURY VINYL TILE

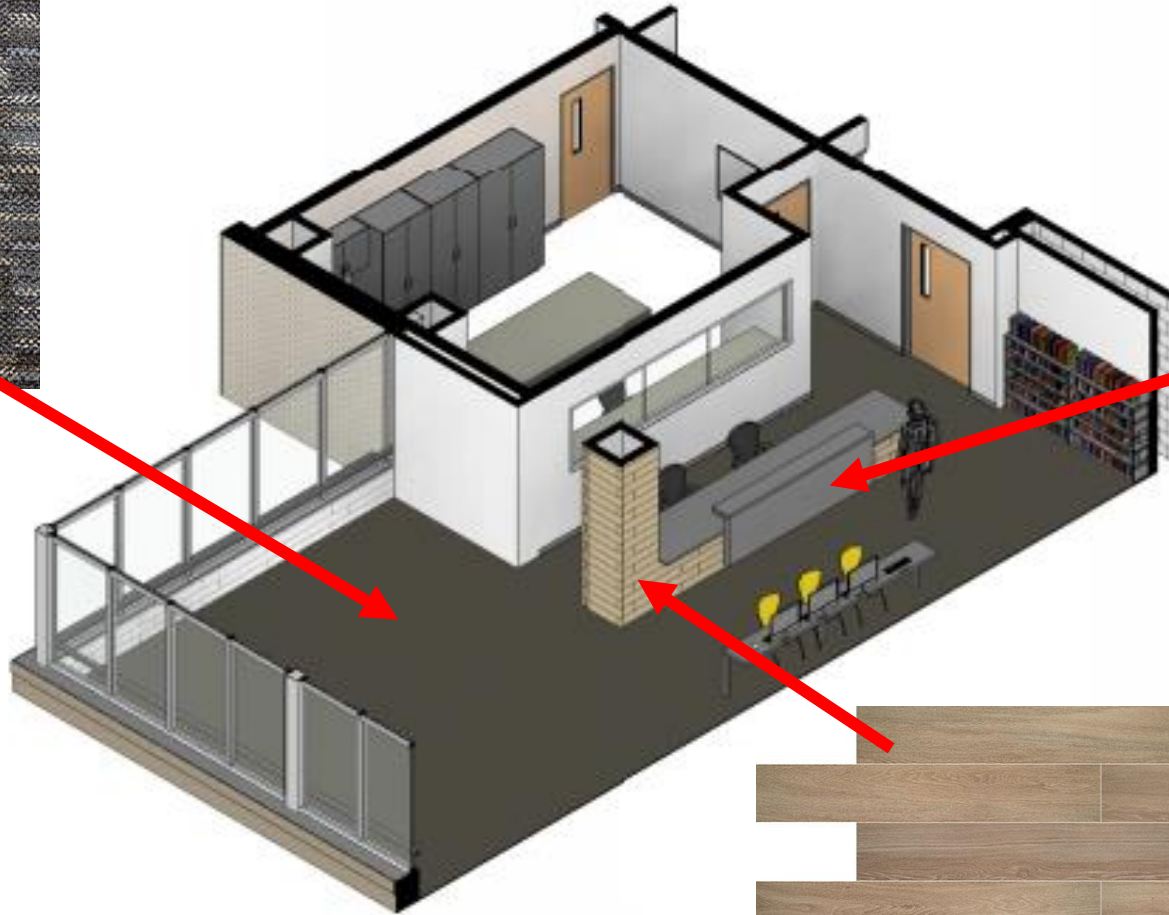


WOOD LOOK- DARK COLOR LUXURY VINYL TILE

CIRCULATION DESK AREA AT THE LIBRARY



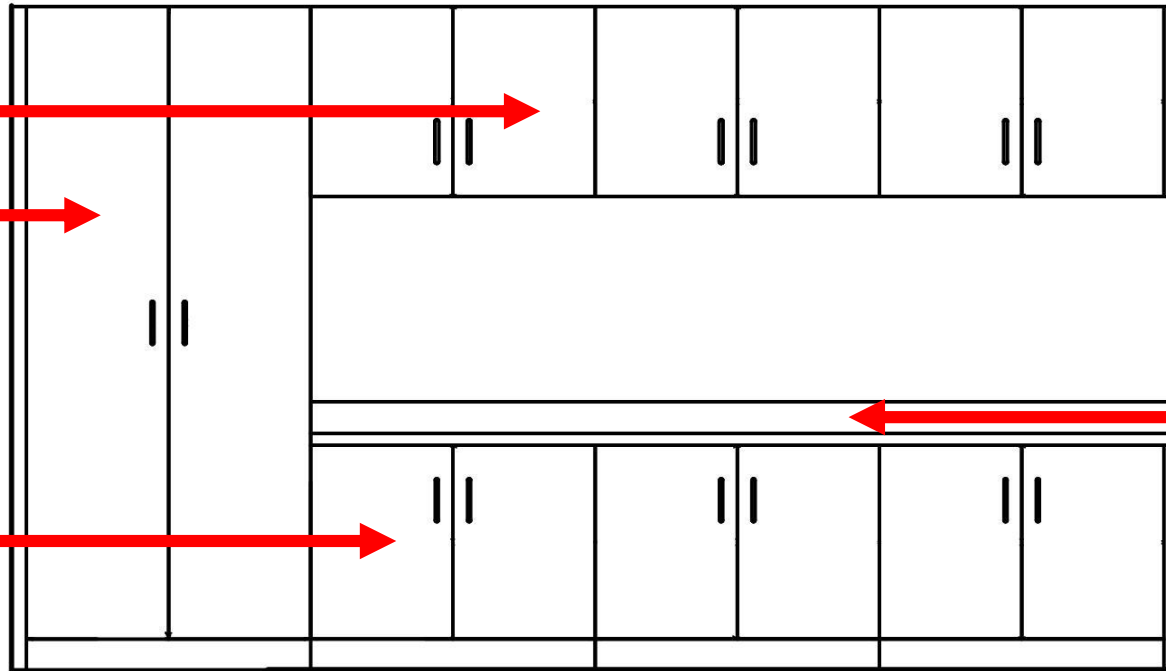
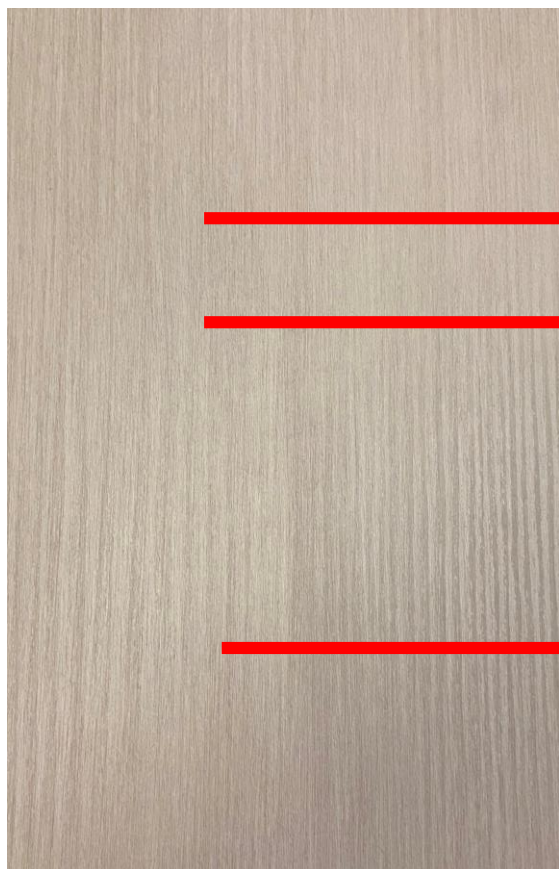
LIBRARY CARPET



COUNTERTOP FINISH



WOOD LOOK- LIGHT COLOR PORCELAIN TILE

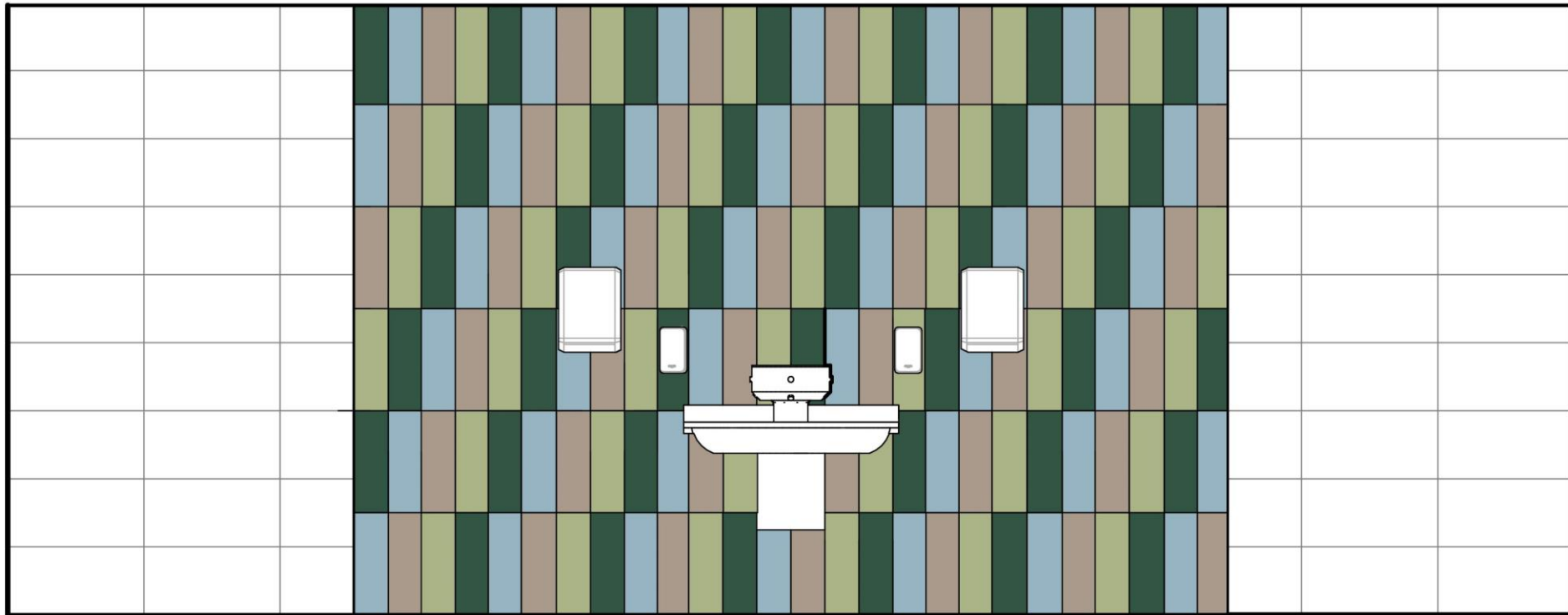


CASEWORK FINISHES

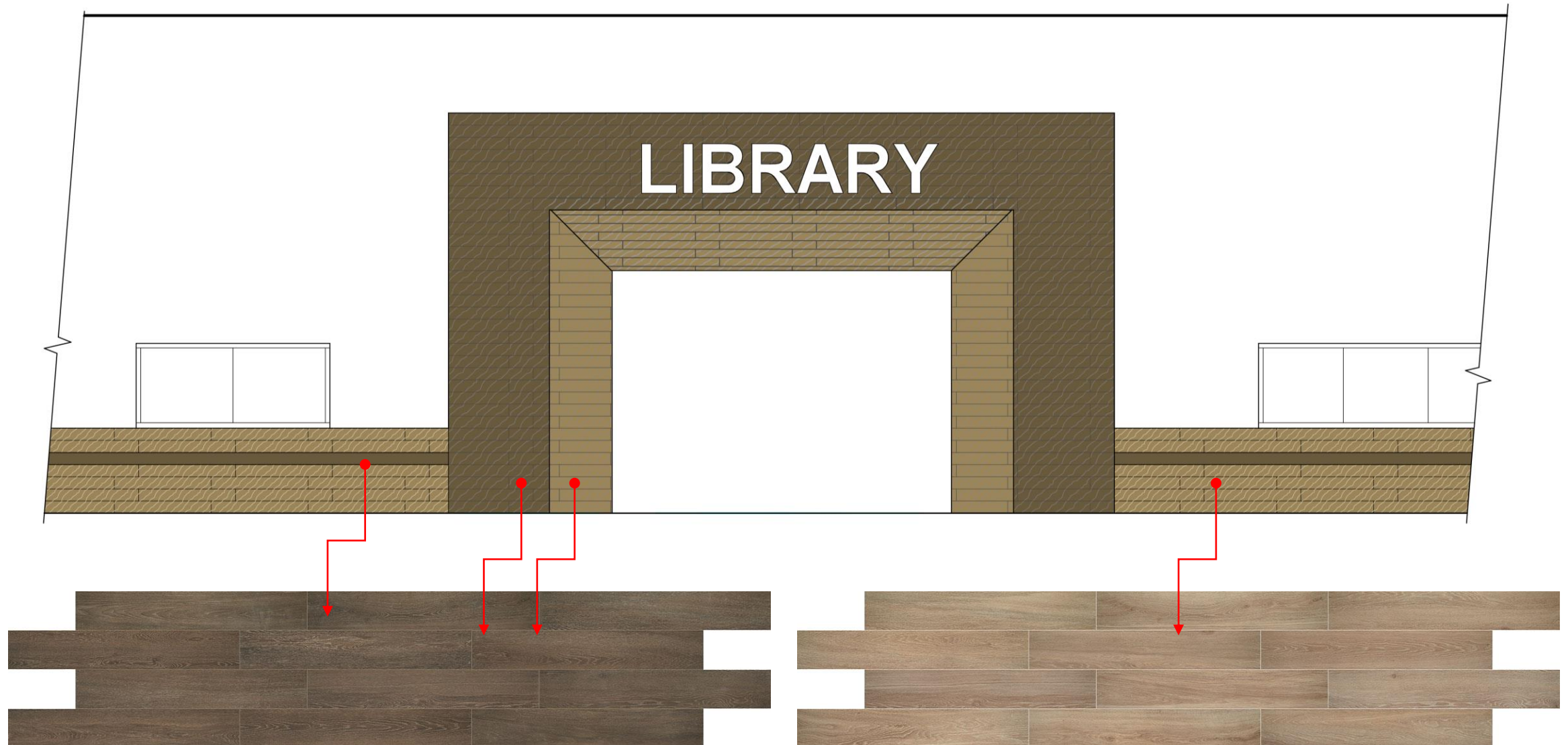
ENLARGED TYPICAL GROUP RESTROOM



RESTROOMS WALL PATTERNS OPTION B



WAINSCOTT WALL PATTERNS OPTION B



PROPOSED LIBRARY ENTRANCE - PERSPECTIVE



PROPOSED LIBRARY - PERSPECTIVE



PROPOSED FLEXIBLE LEARNING - PERSPECTIVE



Hunters Creek Elementary School

QUESTIONS?

Hunters Creek Elementary School

Replacement School PAT Meeting #9 – 11.06.2019 – Voting Card

FRONT ENTRY

• OPTION A _____



• OPTION B _____

