

WIDEFIELD SCHOOL DISTRICT 3

PRIDE. TRADITION. INNOVATION.



2020-2021 Fall Plans

A MESSAGE FROM THE SUPERINTENDENT

WSD3 Families and Staff,

While we intend to open our doors on Monday, August 17, we realize we will need to be ready to pivot if conditions change. We hope to start the school year off with a **“modified in-person model”** which means all students and staff in school, five days a week, following new safety and health guidelines. We will be finalizing our reopening approach the first week of August when we are closer to the start of the school year and have the most up-to-date safety and health guidance to make an informed decision.

For families who are not comfortable going back to school yet, we have an online education program called **D3 My Way**. Please note that not all school based supports and services are available at D3 My Way and any specialized plans should be discussed with your home school prior to enrollment at D3 My Way.

The plan to reopen as “close to normal” as possible will include safety measures designed to protect the health and well-being of students and staff as well as guidelines set forth by the state and local health department. As students return to the classroom, we anticipate important safety protocols will be in place to limit exposure and transmission of COVID-19 which will allow the district to remain open for in-person learning.

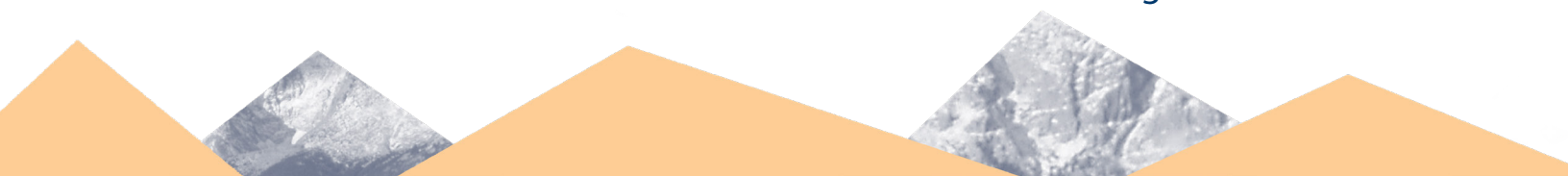
To be safe and effective, this reopening plan requires the full cooperation and understanding of students, staff, and families. As we have all seen, conditions can change quickly, and we must understand that plans will have to be adjusted as our health partners advise, to ensure they are as strong as they can be to protect the health and wellness of staff, students and the community.

Respectfully,

Scott Campbell
Superintendent

TABLE OF CONTENTS

OUR PROCESS	Pg. 4
SAFETY, HEALTH, & WELLNESS	Pg. 5
1. Social and Emotional Learning.....	Pg. 5
2. Health Protocols.....	Pg. 5
a. Masks.....	Pg. 5
b. Hand Washing.....	Pg. 6
c. Social Distancing.....	Pg. 6
d. Sanitation/Cleaning.....	Pg. 7
e. Wellness Screening.....	Pg. 7
SUPPORT	Pg. 8
1. Instructional Plans.....	Pg. 8
a. Modified In-person Learning.....	Pg. 8
b. Hybrid Learning.....	Pg. 9
i. Elementary.....	Pg. 9
ii. Secondary.....	Pg. 10
c. Distance Learning.....	Pg. 12
i. Elementary.....	Pg. 14
ii. Secondary.....	Pg. 15
2. D3 My Way.....	Pg. 17
3. Special Education.....	Pg. 18
4. Activities and Athletics.....	Pg. 18
KEY ELEMENTS	Pg. 19
1. Practices and Procedures.....	Pg. 19
a. Registration.....	Pg. 19
b. School.....	Pg. 19
c. Classroom.....	Pg. 20
d. Nutrition Services.....	Pg. 21
e. Transportation.....	Pg. 21
f. School Closure.....	Pg. 22
RESOURCES	Pg. 23



OUR PROCESS

Widefield School District 3 (WSD3) is committed to safely reopening schools on Monday, August 17 for all students to attend in-person, on-site, five days a week. While the modified in-person learning plan is our intention, it is clear we need to have plans to change quickly depending on the situation which we will undoubtedly face. WSD3 has been monitoring the ongoing developments across the state and country regarding COVID-19 and has been collaborating with El Paso County Public Health (EPCPH), other area school districts, and national organizations.

We have five committees consisting of parents, students, teachers, and staff who have been working diligently since early June to develop plans, practices, and procedures that will support students and families as the district reopens schools.

The following principles are guiding our process as we plan for the 2020-2021 school year:



SAFETY, HEALTH, & WELLNESS

SOCIAL AND EMOTIONAL LEARNING

WSD3 is committed to monitoring and supporting the social and emotional wellness of students. Plans have been established to provide Social and Emotional Learning (SEL) for all students in conjunction with modified in-person, hybrid, and distance learning models. Staff members will embed consistent, scheduled opportunities to check and connect with students in order to build community, teach SEL strategies, monitor wellness, and identify individualized needs. In addition, every school has multiple assigned mental health providers who have the expertise to support individual student needs.

HEALTH PROTOCOLS

Masks

Please help us stay in school by wearing face coverings or masks to reduce disease transmission. Current research confirms the effectiveness of mask use, especially when social distancing is not possible. The more we wear masks, the better.

1. All staff required to wear facial coverings and masks.
2. Students in grades 3-12 will be required to wear facial coverings or masks.
3. PreK-2 students will be required to wear facial coverings or masks when:
 - Riding the school bus
 - Entering and leaving the building
 - Outside the classroom in hallways or common areas
4. PreK-2 students are strongly encouraged to wear facial coverings or masks to the greatest extent possible while in proximity to other people.
5. Parents, please help your child(ren) get accustomed to wearing masks:
 - Be Positive - explain that masks are worn to keep everyone safe
 - Teach your child(ren) how to put the mask on and off
 - Start with 30 minute increments of wearing the mask prior to the beginning of the school year

SAFETY, HEALTH, & WELLNESS

Hand Washing

1. Promote hand washing, respiratory hygiene and cough etiquette.
2. Provide hand hygiene breaks.
3. Hand washing expectations and COVID-19/everyday health practices posted throughout the building.
4. Provide hand sanitizer in every classroom and throughout buildings.

Social Distancing

1. Maintaining social distancing helps limit the spread of COVID-19.
2. Schools will practice social distancing whenever and wherever possible.
3. While 6 feet is the ideal distance, situations may not allow for this spacing. Every bit of distance is better than none, so maximizing all available space or looking at alternative locations for instruction or activity may be necessary.
4. Students will be in assigned groups to minimize contact with others.
5. Students will have assigned seats while in the classroom and on the bus.
6. Avoid contact such as hugging, holding or shaking hands.



SAFETY, HEALTH, & WELLNESS

Sanitation/Cleaning

1. EPA registered, hospital grade disinfectant will be used in buildings and on buses.
2. Antimicrobial protectant on high traffic surfaces - such as desks, chairs, doorknobs, bus seats, and playground equipment.

Wellness Screening

1. Parents will be required to do temperature checks and wellness screening at home prior to sending their child to the bus or school.
2. Your child may not attend school if they have the following:
 - a. New onset of cough or shortness of breath by themselves;
 - b. Fever (100.4 Fahrenheit or higher)

OR

- c. At least 2 of the following:
 - i. Chills
 - ii. Muscle pain
 - iii. Sore throat
 - iv. Loss of sense of smell or taste
 - v. Gastrointestinal symptoms of diarrhea, vomiting, or nausea

Children who become ill with COVID-19 like symptoms should be kept home, consult their pediatrician, and tested for COVID-19 if appropriate.



SUPPORT

INSTRUCTIONAL PLANS

We have three learning models in place including modified in-person, hybrid, and distance learning. We are planning to start the school year with a modified in-person learning plan and then transition if guided by state and local health officials to the hybrid or distance learning plans.

Modified In-Person Learning

Students will attend all their regularly scheduled classes in-person. Our goal when returning to school full time is to mitigate the spread of COVID-19. We realize that eliminating contact between students and adults in this model is not possible but that returning to school is important for the academic, social and emotional needs of all of our students. ***Required modifications/changes may be necessary as new information and requirements are shared with WSD3 from local and/or state health agencies.*** If parents are uncomfortable or unwilling to send their child to school we have an online education program called D3 My Way for families. Social distancing measures, personal hygiene and additional cleaning procedures will be adopted to reduce the spread of COVID-19.

Steps might include (when feasible and practical):

1. Keeping students in cohorts to minimize student contact
2. Opportunities for additional hand washing/sanitizing
3. Separating student desks by 3-6 feet
4. Minimize shared resources between students (books, technology)
5. Limiting the number of classes in the hallway when moving to specials (elementary)
6. Students (3-12) required to wear masks, preK-2 masks required when entering and leaving the building, riding on the bus, and outside the classroom in hallways or common areas
7. Either staggering entry and exit times into buildings or adding access points for the purpose of minimizing crowding when entering and leaving the building.
8. Modified block schedule in secondary schools to limit the number of passing periods and allowing for cohorts of students to remain together thereby reducing the amount of contact between and among students.
9. Limiting parents, guardians, visitors (including volunteers) in buildings
10. No assemblies or large group gatherings

SUPPORT

Hybrid Learning (mix of in-person and distance learning)

All the precautions and procedures implemented for a modified in-person return will be continued during a hybrid schedule.

Grading procedures will remain the same as building and classroom level expectations when students are attending school in-person. These procedures will be implemented for modified in-person, hybrid (in-person and distance learning) and distance learning models.

Elementary

- K-2nd grade will attend a full school day in-person every day of the week. In the event that local/state health agencies require fewer students in attendance it may be necessary to have kindergarten, 1st grade and 2nd grade students to attend school in-person fewer than 5 days a week.
- 3rd grade will attend a full school day **in-person on Monday, Wednesday and Friday**. On **Tuesday and Thursday students will attend class online** for academic instruction for up to but no longer than three hours. Students will attend specials classes in addition to academic instruction. On days that students attend class online, they will have an opportunity to conference with teachers to receive support and collaborate with peers.
- 4th grade and 5th grade will attend a full school day **in-person on Tuesday and Thursday**. On **Monday, Wednesday, and Friday students will attend class online** for academic instruction for up to but no longer than three hours. Students will attend specials classes in addition to academic instruction. On days that students attend class online, they will have an opportunity to conference with teachers to receive support and collaborate with peers.

SUPPORT

Hybrid Learning Secondary

1. The goal of a hybrid model is to decrease the risk of exposure by varying in-person instruction with distance learning.
2. Each schedule should allow for all teachers to have in-person instruction at least once a week.
3. The schedule for a hybrid model will have four or five classes meet in-person daily either three or four days a week.
4. On the one or two days a week students will not be in-person at school, they will work independently at their own pace and time. Additionally students will have access to teachers during seminar/conference times.
5. Individual school schedules will be posted on their website when the schedules are finalized.

Here are two **EXAMPLES** of what potential schedules could look like in the event we transition to a hybrid model of instruction:

Elementary Example Schedule

X = In School

	MONDAY	TUESDAY	WEDNESDAY	THURSDAY	FRIDAY
K	X	X	X	X	X
1ST	X	X	X	X	X
2ND	X	X	X	X	X
3RD	X	<i>online</i>	X	<i>online</i>	X
4TH	<i>online</i>	X	<i>online</i>	X	<i>online</i>
5TH	<i>online</i>	X	<i>online</i>	X	<i>online</i>

SUPPORT

Hybrid Learning

Secondary Example Schedule

EXAMPLE 1	AM	(shorter period)	PM
Monday	All Online		
Tuesday	Periods 1 & 2	7	Periods 3 & 4
Wednesday	Periods 5 & 6	7	Periods 1 & 2
Thursday	Periods 1 & 2	7	Periods 3 & 4
Friday	Periods 5 & 6	7	Periods 1 & 2
EXAMPLE 2	AM	(shorter period)	PM
Monday	All Online		
Tuesday	Periods 1 - 2 - 3 -(7)		
Wednesday	Periods 4 - 5 - 6 -(7)		
Thursday	Periods 1 - 2 - 3 -(7)		
Friday	Periods 4 - 5 - 6 -(7)		

SUPPORT

Distance Learning

Technology

- A limited number of Chromebooks have been set aside as loaners for students who do not have access to technology at home. Chromebooks will be made available to students per principal approval in the event that distance learning is required.
- In addition, a limited number of hot spots will be made available to students whose households do not have access to an internet connection.
- Parents/guardians in need of assistance are encouraged to contact their students' teachers or main office in the event that distance learning is required.

Grading

Grading procedures will remain the same as building and classroom level expectations when students are attending school in-person. These procedures will be implemented for modified in-person, hybrid (in-person and distance learning) and distance learning models.

New Learning

New content will be provided that will engage students in rigorous learning at a pace that will promote learning and growth for students.

Seminar/Conference Time

Teachers will schedule regular seminar/conference hours that students can access teachers for support. This time will be to support individual students and allow for groups of students to collaborate for support.

SUPPORT

Distance Learning

Communication to Students (Frequency and Day/Time)

- Emails and/or class communication need to be clearly labeled with teacher name and class name.
- Buildings will provide a master schedule and expectations for teachers to communicate on a consistent timeline when they send emails and/or alerts to parents/students.
- It is an expectation that teachers respond to student/parent inquiries within 24 hours of a scheduled instructional day.

Workload

An effort will be made to balance student workload among all subjects/classes.

Academic Interventions

Students exhibiting specific or significant learning gaps may receive in-person instruction.



SUPPORT

Distance Learning Elementary

- Primary grade students (K, 1st, 2nd) will attend online classes for academic instruction up to three hours in addition to specials classes.
- Intermediate grade students (3rd, 4th, 5th) will attend online classes for academic instruction for up to three hours in addition to specials classes.
- Intervention services may be provided in-person for students who have been identified as needing additional academic support, special education students, those students needing Social and Emotional support, English Language Learners and students with Advanced Learning Plans.

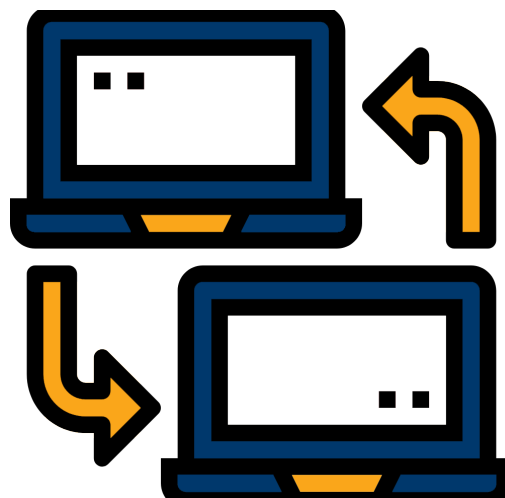
Based on our teachers' experience and educational research we realize that it is not the best instructional practice for students to sit and listen to an instructor for consecutive hours at a time. Our goal for instruction at the elementary level is to break up virtual lessons into small chunks of learning, allow for students to collaborate with peers, provide multiple methods for students to demonstrate learning, and allow for student breaks. Our teachers will be provided training on instructional practices and strategies that will fulfill student learning needs in a virtual environment.



SUPPORT

Distance Learning Secondary

- All students will attend online classes for academic instruction for up to three hours daily.
- Students will receive a schedule from their school to determine when each course is taught during the day.
- Students will be expected to attend virtual sessions each day in addition to independent work. One day a week classes will not be scheduled but time will be devoted for students to work independently at their own pace and time. Additionally access to teachers through seminar/conference time will be provided on this day.
- Individual school schedules will be posted on their website when the schedules are finalized.
- Intervention services may be provided in-person for students who have been identified as needing additional academic support, special education students, those students needing Social and Emotional support, English Language Learners and students with Advanced Learning Plans.



SUPPORT

Distance Learning

Here is an **EXAMPLE** of a potential distance learning schedule for secondary students:

	<u>Monday</u>	<u>Tuesday</u>	<u>Wednesday</u>	<u>Thursday</u>	<u>Friday</u>
8:45–9:45	Teacher Class Conferences/Seminar	Teacher Class Conferences/Seminar	Teacher Class Conferences/Seminar	Teacher Class Conferences/Seminar	Teacher Class Conferences/Seminar
10:00 – 10:55	<u>Check-in Class: Goal Setting</u> 1st 10 minutes check-in All classes post independent practice assignments to reinforce learning from previous week's standards or a preview of new learning.	<u>Period 1</u> 1st 5 minutes attendance 1st 10 minutes check-in 10 minutes of direct live instruction 20 minutes Practice: We-Do, Checkpoints, Projects, Concept practice (math), class discussions, feedback, etc. 10 minutes independent practice	<u>Period 3</u> 1st 5 minutes attendance 1st 10 minutes check-in 10 minutes of direct live instruction 20 minutes Practice: We-Do, Checkpoints, Projects, Concept practice (math), class discussions, feedback, etc. 10 minutes independent practice	<u>Period 5</u> 1st 5 minutes attendance 1st 10 minutes check-in 10 minutes of direct live instruction 20 minutes Practice: We-Do, Checkpoints, Projects, Concept practice (math), class discussions, feedback, etc. 10 minutes independent practice	<u>Period 1</u> 1st 5 minutes attendance 1st 10 minutes check-in 10 minutes of direct live instruction 20 minutes Practice: We-Do, Checkpoints, Projects, Concept practice (math), class discussions, feedback, etc. 10 minutes independent practice
11:00 – 11:45	• Counselor & SSP groups; sign-ups through online schedule/invites (Sign-up Genius)	<u>Period 2</u> 1st 5 minutes attendance 10 minutes of direct live instruction 20 minutes Practice: We-Do, Checkpoints, Projects, Concept practice (math), class discussions, feedback, etc. 10 minutes independent practice	<u>Period 4</u> 1st 5 minutes attendance 10 minutes of direct live instruction 20 minutes Practice: We-Do, Checkpoints, Projects, Concept practice (math), class discussions, feedback, etc. 10 minutes independent practice	<u>Period 6</u> 1st 5 minutes attendance 10 minutes of direct live instruction 20 minutes Practice: We-Do, Checkpoints, Projects, Concept practice (math), class discussions, feedback, etc. 10 minutes independent practice	<u>Period 2</u> 1st 5 minutes attendance 10 minutes of direct live instruction 20 minutes Practice: We-Do, Checkpoints, Projects, Concept practice (math), class discussions, feedback, etc. 10 minutes independent practice
noon	Break	Break	Break	Break	Break
1:00–1:45	Professional Development for Teachers; Faculty PD and PLC meetings	<u>Math: Independent Practice</u> Students may use Pearson/Kahn Academy/math assignment practice math skills	<u>Math: Independent Practice</u> Students may use Pearson/Kahn Academy/math assignment practice math skills	<u>Math: Independent Practice</u> Students may use Pearson/Kahn Academy/math assignment practice math skills	<u>Math: Independent Practice</u> Students may use Pearson/Kahn Academy/math assignment practice math skills
2:00–2:45		<u>Independent practice:</u> Students spend time working on assignments.	<u>Independent practice:</u> Students spend time working on assignments	<u>Independent practice:</u> Students spend time working on assignments	<u>Independent practice:</u> Students spend time working on assignments

SUPPORT

D3 MY WAY

For families who are more comfortable with an online education option to start the year, we have a well-established program called [D3 My Way](#) that uses Accelerate, an award-winning online learning curriculum, as the basis for instruction. D3 My Way was designed to be able to transition students from traditional school to an online setting and back to traditional school when the parent and student are ready to go back to school. Please note that not all school based supports and services are available at D3 My Way and any specialized plans should be discussed with your homeschool prior to enrollment at D3 My Way. You can also reach out to our Special Services department at 719-391-3050.



SUPPORT

SPECIAL EDUCATION

WSD3 remains committed to serving students who receive special education services. Teachers and staff members look forward to collaborating with families on an ongoing basis to ensure their child's educational success. In order to meet student needs, D3 Special Education staff will:

- Work to maintain existing student cohorts where possible.
- Prioritize providing special education services in general education classrooms when that model can appropriately meet student needs.
- Maintain social distancing when students from different cohorts are brought together for small groups.
- Wear mask/face shield when social distancing cannot be maintained, in accordance with D3 health and safety protocols.
- Special education providers will create student schedules that prioritize service delivery, grade-level content, and student health and safety.

Service hours outlined on a student's Individualized Education Program (IEP) will continue to be met for students returning to in-person learning. This will include students who attend center-based programs in schools other than their home school. Families of children with special needs who choose not to send their children back to in-person learning can consider enrolling in D3 My Way, though very minimal support and services will be provided in this online environment. If interested, families should work with their school based IEP teams to determine whether the available special education supports are appropriate for their student(s).

ACTIVITIES & ATHLETICS

WSD3 believes activities and athletics are essential to a student's learning experience and we will continue to support these programs to the extent El Paso County Public Health (EPCPH) and Colorado Department of Public Health and Environment (CDPHE) will allow. WSD3 remains in constant communication with the Colorado High School Athletic Association (CHSAA) to determine appropriate programming, including conditioning, practices, meetings and competitions. More information regarding activities and athletics will come from your child's school.

KEY ELEMENTS

PRACTICES & PROCEDURES

Registration

WSD3 uses an online student information system for registration. Parents may complete the 2020-2021 online registration process from home using the [Infinite Campus \(IC\) parent portal](#).

Families without access to a personal computer or the Internet may schedule an appointment to use a computer at the Central Registration office located at 930 Leta Drive. Parents and guardians will be required to wear facial coverings and comply with the District's social distancing and health/safety protocols while on campus. We also ask that you do not bring children with you for in-person registration.

For additional information, please call 719-391-3557.

School

- Common areas will be marked with reminders to social distance and wear face coverings as appropriate.
- Plexiglass shields have been installed in the front office of every school.
- Hand sanitizer will be provided in each classroom and through the building.
- Hand washing expectations and COVID/everyday health practices will be posted throughout the building.
- WSD3 is limiting outside visitors including volunteers.
- Increase fresh air circulation by opening windows and use of fans.
- EPA registered, hospital grade disinfectant in buildings and buses.
- Antimicrobial protectant on high traffic surfaces, such as desks, chairs, doorknobs, bus seats, and playground equipment.

KEY ELEMENTS

Classroom

- Desks and tables will be arranged with as much social distancing as possible.
- Teachers will limit community items and ensure students do not share personal supplies.
- Teachers and students will be expected to sanitize work areas and supplies after use.
- Students will be kept in cohorts (with the same peers throughout the day) whenever feasible.
- Students will have assigned seats.
- Hand washing and hand sanitizing will be increased and included in scheduled activities.
- Increase fresh air circulation by opening windows and use of fans.



KEY ELEMENTS

Nutrition Services

- Students will eat in classrooms, cafeterias, outside, or other locations where social distancing can be practiced.
- If the instructional schedule changes from in-person learning, students on distance learning days could be eligible for or purchase a grab-and-go meal through the National School Lunch Program at their school.
- Specific information regarding breakfast and lunch schedules will be provided by schools prior to school starting.

Transportation

In accordance with the Centers of Disease Control and Prevention (CDC) and El Paso Public Health (EPCPH) guidelines, bus capacity has been reduced. We are still working on the numbers of riders allowed and will continue to provide updates.

- Parents will be expected to take their child's temperature before leaving the house and to withhold an ill student from attending school.
- Students, drivers and monitors will be required to wear masks, face coverings, or shields while on the bus.
- Students will be assigned seats. Family members will share seats.
- Bus windows will be open at all times as weather permits. If weather does not permit, hatch fans, when applicable, will be 'on' during routes.
- Current regulations reduce the number of riders. We will provide more information about transportation as plans are finalized.

KEY ELEMENTS

School Closure

WSD3 is committed to safely reopening schools with in-person learning, however, contingency plans are in place for closing classrooms or schools based on El Paso County Public Health (EPCPH) guidelines. In the event of a classroom, school, or district closure, we will transition into either the hybrid model or distance learning model. Please refer to the instruction plans section for details on each model.

An outbreak is defined as two or more positive COVID-19 cases in non-household members with symptom onset within a 14-day window. These outbreaks can be limited to a single group or class (cohort outbreak), staff (two or more faculty members), or schoolwide (two or more cohorts within a school meeting the outbreak definition). Every outbreak will be unique and will be handled on a case-by-case basis in conjunction with El Paso County Public Health (EPCPH).



RESOURCES

- [Centers for Disease Control and Prevention \(CDC\) School Guidelines](#)
- [Colorado Department of Health and Environment Cleaning Guidance](#)
- [Colorado Department of Education Guidance for Parents](#)
- [CDC Symptom Self-Checker](#)
- [Supporting Your Child's Mental Health - UNICEF](#)
- [COVID-19 Resources for Families - Children's Hospital Colorado](#)
- [El Paso County Public Health \(EPCPH\) Website](#)