

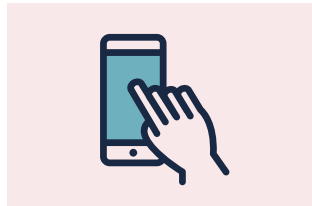
Stay Safe on Campus

Keeping our community safe from the spread of COVID-19 is our top priority. In accordance with recommendations from the Centers for Disease Control and Prevention and DC guidelines, we have established new protocols for the 2020/21 school year. While the policies may change due to ongoing shifts in expert recommendations, at present parents can expect:



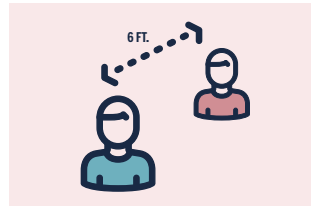
REQUIRED FACE COVERINGS

except during eating, drinking, administration of medication, and during outdoor activities when physical distancing can be observed



NEW DROPOFF PROCEDURES

including staggered arrival times, a daily temperature check, and an app-based medical questionnaire completed before arrival



PHYSICAL DISTANCING

of at least six feet through a reduction in class sizes; one-way traffic in hallways, entrances, and exits



SMALLER CLASS SIZES

and separated desk space; a substantial reduction in shared equipment and supplies; added plexiglass partitions



VIRTUAL MEETINGS

including for student clubs, parent-teacher conferences, and Meetings for Worship; suspension of dances, school-sponsored trips, and other large gatherings



HANDWASHING*

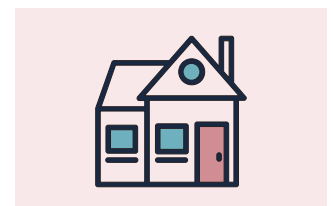
including before and after eating; after wiping down desks and shared equipment; after coughing or sneezing; after playing outside

*additional handwashing stations provided to accommodate increased handwashing



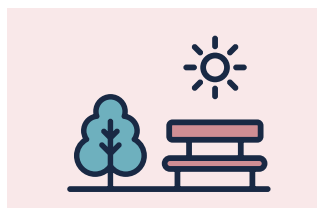
TRAINING

for students and staff on COVID 19 prevention practices; signage and ongoing communication will supplement and reinforce training



STAY HOME

if you have flu-like symptoms, fever, sore throat, persistent cough, congestion or runny nose, shortness of breath, nausea, stomach pain, red or itchy eyes, loss of taste or smell



OUTDOOR CLASSROOMS

when possible



HAND SANITIZER

in every building, especially when handwashing isn't available



NO VISITORS ON CAMPUS

including parents



INDIVIDUALLY WRAPPED LUNCHES

served in classrooms instead of the cafeteria

Be sure to visit [sidwell.edu/fall2020](https://www.sidwell.edu/fall2020) for the latest updates. While it may take some time to adjust to these steps, abiding by the policies is the best way that we can provide the safest environment possible to the entire Sidwell Friends community.

Keeping safe is a community-wide effort. Thank you for doing your part!