



**READY.
SET.
START.**

**MAKE YOUR CHOICE
BY**

AUGUST 5TH!

**If you do not respond by August 5, your student
will be rostered in a Face-to-Face Classroom and on a Parkland Bus/Van.**

Face-to-Face learners will receive a bus stop (if needed) and homeroom assignment in Home Access Center (HAC) on August 24.

1

**Read the Return to School Health
and Safety Plan**

2

Decide what is best for your student:

Face-to-Face Instruction
OR
100% Parkland Online Learning

3

Decide if your student:

will ride a Parkland School Bus/Van
OR
self transport

4

**[Click here to tell
us your choice](#)**

1

Face-to-Face or Parkland Online Learning

Face-to-Face/Hybrid Plan

Parkland has been vigorously working on its Health and Safety Plan necessary to reopen schools. The next few pages summarize some key details about reopening policies and procedures that are designed to help keep students and staff safe. You should read through the full Health and Safety Plan before making a final decision to return for face-to-face instruction or enroll in Parkland Online Learning. *

Elementary
K-5th Grade Students

Monday through Friday
All elementary school students
report to school every day

Secondary
6-12th Grade Students
Hybrid Schedule

Mon & Tues: A-L last names report to school
M-Z last names in e-Learning

Thurs & Fri: M-Z last names report to school
A-L last names in e-Learning

Wed: All secondary students in e-Learning
Additional cleaning/sanitization will occur

Cleaning and Sanitizing

Each school bus, classroom, hallway, restroom, cafeteria and frequently touched surfaces will be cleaned daily per CDC Guidelines.

Face Coverings, Social Distancing and other Safety Protocols

All individuals ages 2 and up, including school students and staff, are required to wear face coverings that comply with district dress code policy while indoors or outdoors unless they are six feet apart or unable to do so for health reasons. Face covering breaks will be built into the K-5 schedule.

All students K-12 will wear a face covering at the bus stop if unable to maintain 6 feet of social distancing; on the school bus; when entering and exiting the building; in the classroom; when passing classes; during any movement through buildings; in the cafeteria (once seated 6 feet apart to eat, the face covering may be removed).

Water Fountains will be closed this year, therefore students and staff should bring their own water. Touchless hydration fill stations and classroom sinks will be available.

Parents may be asked to provide additional supplies for the classroom to minimize the sharing of supplies.

Student desks will face the same direction with 3-6 feet between them to the maximum extent feasible and appropriate.

Monitoring students and staff for symptoms and history of exposure

All staff and students will be required to complete a Student Online Wellness Form or Staff Online Wellness Form to pre-screen for COVID-19 symptoms daily prior to boarding a bus or entering a district facility. Students and staff should remain home if ill. Current Center for Disease Control and Department of Health Guidelines will be utilized in assessing potential cases and exposure.

Should the level of community spread of the virus require an alternative instructional model, Parkland face-to-face learners will move to 100% e-Learning, a separate program from Parkland Online. e-Learning will include more structure, more live instruction and more rigor than this past spring.

e-Learning Instruction:

- Instruction will occur daily with live instruction led by a Parkland teacher at least 2 times per week.
- Additional small group live instruction will be added at the elementary level.
- An agenda with assignments for the week will be posted each Monday with assignments due the following Monday or as determined by the teacher.
- Flexibility will remain, however, assignments may be rigorous and will be designed to cover all core concepts in the curriculum.
- Students will be permitted to re-test or revise an assignment to show understanding. Teachers will make the determination on which assignments can be re-submitted for improved understanding/grades.
- If students are late with assignments and there are no extenuating circumstances, a zero may be given.

*Individualized decisions regarding programming for students with disabilities will be made in accordance with 504 and IDEA requirements.

K-12 Parkland Online Learning Program

We are happy to announce that the 10-year old Parkland Cyber Learning Program that was previously offered for students in grades 6-12 will expand to include grades K-5 for families who want their student to participate in remote learning due to safety or health concerns. The new program is called Parkland Online and features a broader curriculum than years past. Parkland Online offers a rigorous curriculum aligned to PA state standards. Students enrolled in Parkland Online are able to earn a Parkland Diploma upon completing all requirements for graduation. A recognized high school diploma is extremely important in the future aspirations of all graduates and we are pleased to be able to provide this viable educational option. **Characteristics that will contribute to a great online learning experience include self-motivation, self-discipline, good study habits and independence.**

Location

Students learn primarily online.

Instruction

- Parkland teachers or Pennsylvania certified teachers will facilitate online learning.
- Students will be responsible to complete all assignments and connect with teachers during office hours.
- There are no predetermined requirements for live instruction and, in some cases, no live instruction will occur.
- Students will work at their own pace.
- Support for students who are struggling or falling behind will be provided by a Parkland staff member.
- A designated Parkland Learning Support teacher will assist Learning Support students to ensure IEP goals are met.
- Kindergarten through 2nd grade students will require a parent/guardian to assist them.

Curriculum

- College Prep Level courses for English Language Arts, Math, Science, Social Studies, and World Languages are available.
- Some Advanced Placement and Honors courses are available.
- Courses that require hands-on activities will not be available (i.e., Project Lead The Way courses, some music, art or tech ed courses).
- Encore subjects at the elementary level consist of Art and Physical Education/Health (there is no Music or Media Center).
- A variety of electives for grades 6-12 are available.
- View the course catalog [here](#). Click on the tabs at the bottom of the document to view courses offered at each grade level. If you do not see a course listed here, it is not offered in the Parkland Online Program.

Activities

- Parkland Online students are welcome to participate in after-school Parkland activities and sports.

Grading/Attendance

Students will be graded based on assignments and other measures deemed appropriate by the teachers. Parkland Online follows the same truancy policy as Parkland School District. **A student not logging into and completing work in each course that is equivalent to at least 1 hour per day of course work, 5 days per week, will be considered absent.**

Note: Should Parkland Schools move to e-Learning due to an increase in community spread of the coronavirus, Parkland Online students will continue in their program and face-to-face students will transition to e-Learning as outlined on the previous page.

**To record your choice by August 5, please fill out our short form here:
[LINK TO RECORD YOUR CHOICE FOR INSTRUCTION AND TRANSPORTATION](#)**

2

Making the Transportation Decision

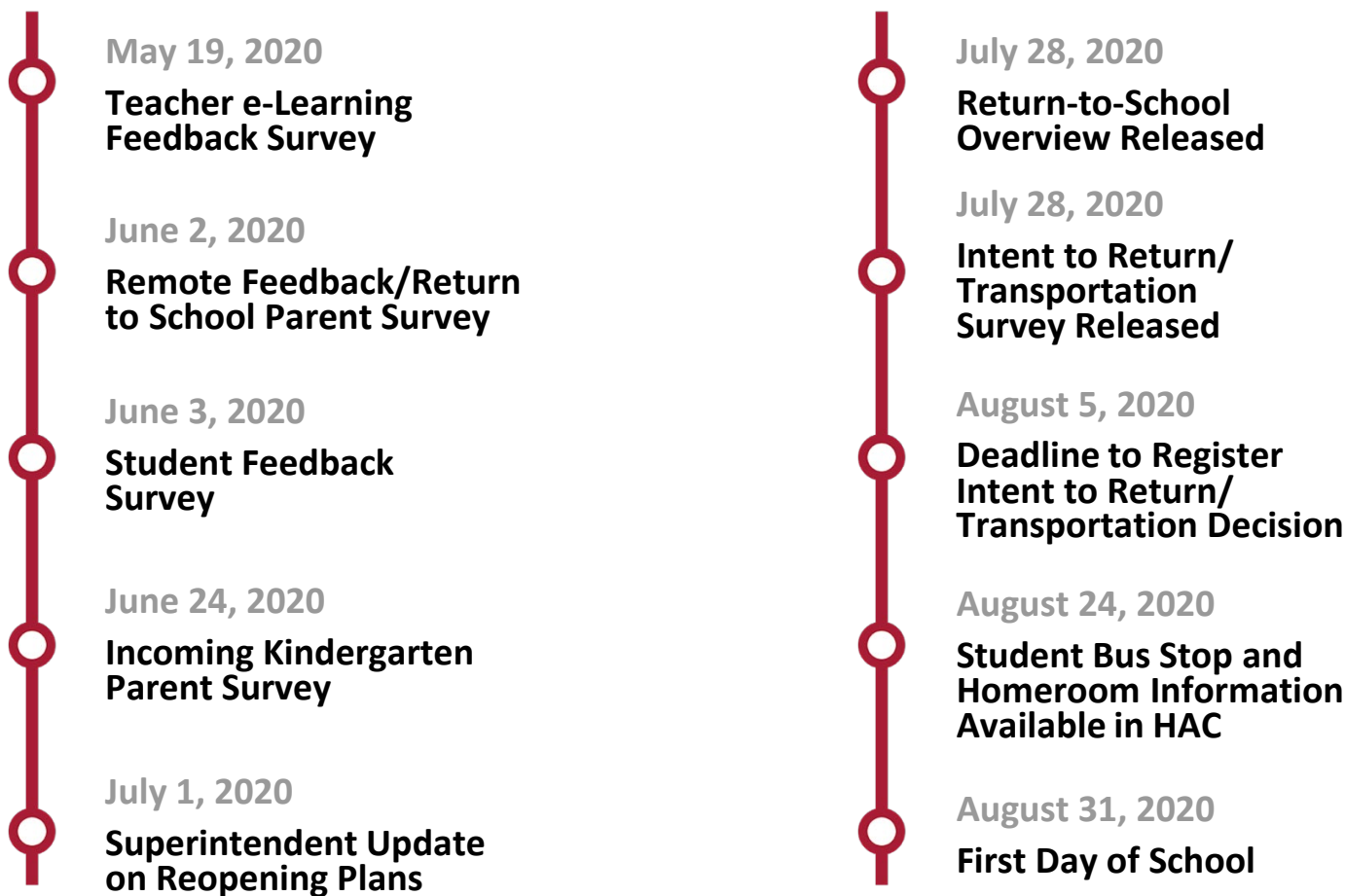
We know from our June Parent Survey that many families plan to self transport students to school. We plan to roster 2 students per seat. We typically have rostered buses with a 3 per seat capacity, so by rostering 2 students per seat, we are reducing bus capacity by one third. In order to make this possible, we need to know who WILL NOT REQUIRE the use of Parkland Transportation. Before making this decision, please review the list of updated rules that will be enforced for the safety of all passengers. We can not accommodate children who are not assigned to a bus stop.

- Face coverings must be worn on the bus at all times.
- Social distancing of 6 feet should be maintained at bus stops (if not possible, face coverings must be worn).
- Secondary school buses will be loaded from back to front.
- Elementary school buses will be loaded back to front with the exception of kindergarten and 1st grade students who will sit in the front of the bus.
- Morning bus run - students will disembark from front to back.
- Afternoon bus run - students will disembark by bus stop.
- There will be no more than two students allowed in each seat.
- Siblings must sit together.
- No “friend” bus passes will be issued.
- Students must use their assigned bus stop.
- Students are encouraged to sanitize their hands when entering or exiting the bus/vehicle. Hand sanitizer will be available on the bus.
- Once seated, no switching of seats is allowed.
- Families should plan to arrive 10 minutes before assigned bus stop times and plan for delays due to traffic conditions.
- A parent, guardian, or designee of kindergarten and 1st grade students must be at the bus stop to receive the child. If no one is at the stop, the child will be taken back to the school at the end of the bus run.
- School buses/vans will be sanitized daily after the morning run and following the afternoon run.
- Changes to your decision must be authorized by the Parkland Transportation Department.



To record your choice by August 5, please fill out our short form here:
[LINK TO RECORD YOUR CHOICE FOR INSTRUCTION AND TRANSPORTATION](#)

Timeline for Summer and Fall 2020



Parkland Strong

Your Choice

As parents/guardians, you have a choice regarding your child's education. You can choose between face-to-face or online learning for 2020-2021. See the details outlined in this document.

Team Parkland

We must be partners and work together in order to provide the best possible experience for Parkland students and staff, with health and safety being our top priority.

Ever-Changing

We are living through a pandemic with many unknowns and a situation that is changing every day. Let's offer each other compassion and patience as we navigate this together.



PARKLAND SCHOOL DISTRICT

Health and Safety Plan

Table of Contents



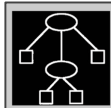
[Purpose of the Plan](#)



[Reopening Plan](#)



[Level of Community Spread](#)



[Decision Tree](#)



[Pandemic Response Team](#)



[Use of Face Covering](#)



[Supporting Teaching & Learning](#)



[Social Distancing and Other Safety Protocols](#)



[Protecting Vulnerable Populations](#)



[Professional Development](#)



[Food Services](#)



[Facilities, Cleaning, Sanitizing, Disinfecting, and Ventilation](#)



[Transporting Students](#)



[Monitoring Student & Staff Health](#)



[Preventative Measures](#)



[Families and Communication](#)



[Visitors and Volunteers](#)



[Athletics, Arts & Extracurriculars](#)



PARKLAND SCHOOL DISTRICT

Health and Safety Plan

Purpose of the Plan

The process to reopen our schools requires a measured and strategic approach enabling students and staff to return to school safely while simultaneously striving to prevent a resurgence of the virus. With the support of everyone involved, including students, their families, and district staff, this can be accomplished effectively.

In planning to return to school for in-person instruction in the fall of 2020 it is imperative that our students, parents/guardians and all Parkland staff understand that we all share in the responsibility to protect ourselves and each other from COVID-19. The Parkland School District Health and Safety Plan is designed to protect the health and safety of our school community while providing a high quality comprehensive educational program for which Parkland School District is renowned. **This will require a commitment of every person in our District to be sustainable.**

In consideration of the likelihood that COVID-19 may be with us for a long period of time, we will utilize a continuum of strategies in our effort to mitigate the spread of the virus and this can only occur as each of us understands it is our duty to protect ourselves and others. Our District is prepared to implement COVID-19 protection to the maximum extent feasible, practicable and acceptable. It is in challenging environments like this where a disciplined and structured approach will benefit all our school community and allow us to operate our District safely. Our District facilities and classrooms will be safer with the participation of every person following the right behaviors. Keeping students and staff healthy and safe remains the top priority of the Parkland School District.

The Pennsylvania Department of Education (PDE) indicated that Districts work in consultation with the local health departments in development of its own “Health and Safety Plan” prior to reopening for in-person instruction. Intermediate Unit Executive Directors, District Superintendents, Parkland Administrative Staff, and Career and Technical School Directors collaborated with local health departments and medical providers in the development of this Health and Safety Plan based upon medical and public health expertise in consultation with the needs and realities of school operations. This plan will be monitored, revised, and updated throughout the school year until normal operations resume.

While health and safety considerations are paramount, our planning is also rooted in our understanding and belief that social interaction and in-person instruction is essential to our children’s emotional well-being, as well as their educational growth and advancement. **Our health and safety plan consists of a spectrum of interventions and strategies that, when applied consistently, work in combination to reduce the overall risk of infection spread. No single precaution, or set of precautions, will completely eradicate COVID-19 or prevent its transmission. The goal is to keep transmission as low as possible to safely continue school activities.**

The return to school presents enormous challenges necessitating a balance between health and safety practices to reduce transmission and the potential learning losses from school closure and remote learning. Research indicates that the virus presents relatively low risk to children, but schools might nonetheless be vectors of community transmission, posing larger risks to the adults with whom infected children come into contact. Evidence suggests that practices such as physical distancing, masking, ventilation, cleaning, and hygiene have the potential to mitigate the spread of COVID-19, including in school settings.

Depending upon the public health conditions in any county within the Commonwealth, there could be additional actions, orders, or guidance provided by PDE and/or the Pennsylvania Department of Health (DOH) designating the county as being in the red, yellow or green phase. **Cycling back and forth between less restrictive to more restrictive designations may occur as public health indicators improve or worsen.**

Throughout the reopening of school in the fall, and any interscholastic athletic programs starting prior to that time, our District will work collaboratively with our public health partners to navigate any changes to this situation, and to make adjustments to the plans as needed. As we strive to minimize the overall effects of COVID-19, the health and safety of the entire school community remains our priority.



PARKLAND SCHOOL DISTRICT

Health and Safety Plan

Reopening Plan

[PDE Phased Reopening of School](#)

The 2020-2021 school year may be unlike any other school year we have experienced in our lifetime. We want this school year to be as productive as possible. Remembering that **we share in the obligation to protect ourselves and others from COVID-19**, following these measures within the Parkland School District Health and Safety Plan enhances the likelihood of keeping our students and staff healthier and safer.

Type of Reopening: Based on our county's current designation and local community needs, Parkland School District has selected from the Pennsylvania Department of Education Guidance the following reopening option:

- Total reopen for all students and staff (but some students/families opt for remote learning out of safety/health concerns).
- Scaffolded reopening: Some students are engaged in in-person learning, while others are remote learning (i.e., some grade levels in-person, other grade levels remote learning).
- Blended reopening that balances in-person learning and remote learning for all students (i.e., alternating days or weeks).
- Total remote learning for all students. (Plan should reflect future action steps to be implemented and conditions that would prompt the decision as to when schools will re-open for in-person learning).

Anticipated Launch Date: First Student Day – Monday, August 31, 2020



PARKLAND SCHOOL DISTRICT

Health and Safety Plan

Governor Wolf's Process to Reopen Schools

All activities must be informed by Governor Wolf's Process to Reopen Pennsylvania, which broadly categorized reopening into three phases: Red, Yellow and Green.

RED PHASE Substantial Virus Spread	YELLOW PHASE Minimal/Moderate Virus Spread	GREEN PHASE Low/No Virus Spread
<p>Schools remain closed for in-person instruction and all instruction must be provided via remote learning, whether using digital or non-digital platforms.</p> <p>Provisions for student services such as meal programs should continue.</p> <p>Large gatherings are prohibited.</p>	<p>Schools may provide in-person instruction after developing a written Health and Safety Plan, to be approved by the local governing body (e.g. board of directors/trustees) and posted on the school entity's publicly available website.</p>	<p>Schools may provide in-person instruction after developing a written Health and Safety Plan, to be approved by the local governing body (e.g. board of directors/trustees) and posted on the school entity's publicly available website.</p>



PARKLAND SCHOOL DISTRICT

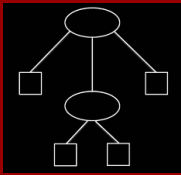
Health and Safety Plan

Level of Community Spread

Lead Individual:
Sheri Deeb,
Supervisor of Health
and Wellness

Level of Community Spread (as determined by state and local health officials)

RED PHASE Substantial Virus Spread	YELLOW PHASE Minimal/Moderate Virus Spread	GREEN PHASE Low/No Virus Spread
<p>Schools Subject to CDC and Commonwealth Guidance</p> <p>Schools remain closed.</p> <p>Coordinate with local and state health officials.</p> <p>Participate in contact tracing to the extent feasible.</p> <p>Instructional delivery is via remote learning for all children.</p> <p>Close buildings and only allow essential staff into the buildings.</p> <p>Accommodate needs for essential employees at higher risk for severe illness.</p> <p>Additional guidance on addressing community spread:</p> <ul style="list-style-type: none"> ● Pennsylvania County Dashboard ● CDC COVID-19 ● CDC Public Health Guidance for Community-Related Exposure <p>No sports-related activities are allowed in counties designated as being in the Red Phase.</p>	<p>Schools Subject to CDC and Commonwealth Guidance</p> <p>Schools may provide in-person instruction only in accordance with Department of Education guidance.</p> <p>Coordinate with local and state health officials.</p> <p>Participate in contact tracing to the extent feasible.</p> <p>Implement enhanced social distancing measures as feasible.</p> <p>Post signage in classrooms and learning management systems utilized by students and staff communicating how to stop the spread of the virus, COVID-19 symptoms, preventative measures, and good hygiene.</p> <p>Establish and communicate protocol for students/staff who feel ill/experience symptoms when they are at work/school.</p> <p>Isolate and clean impacted classrooms and spaces.</p> <p>Consider ways to accommodate needs for persons at higher risk for severe illness.</p> <p>The District may need to close classrooms, schools or the School District and change the instructional delivery model to adapt to changing conditions as public health indicators improve or worsen.</p> <p>Schools may resume sports-related activities after developing a written Athletics Health and Safety Plan, to be approved by the local governing body (e.g. board of directors/ trustees) and posted on the school entity's publicly available website.</p>	<p>SAME GUIDELINES AS YELLOW PHASE</p>



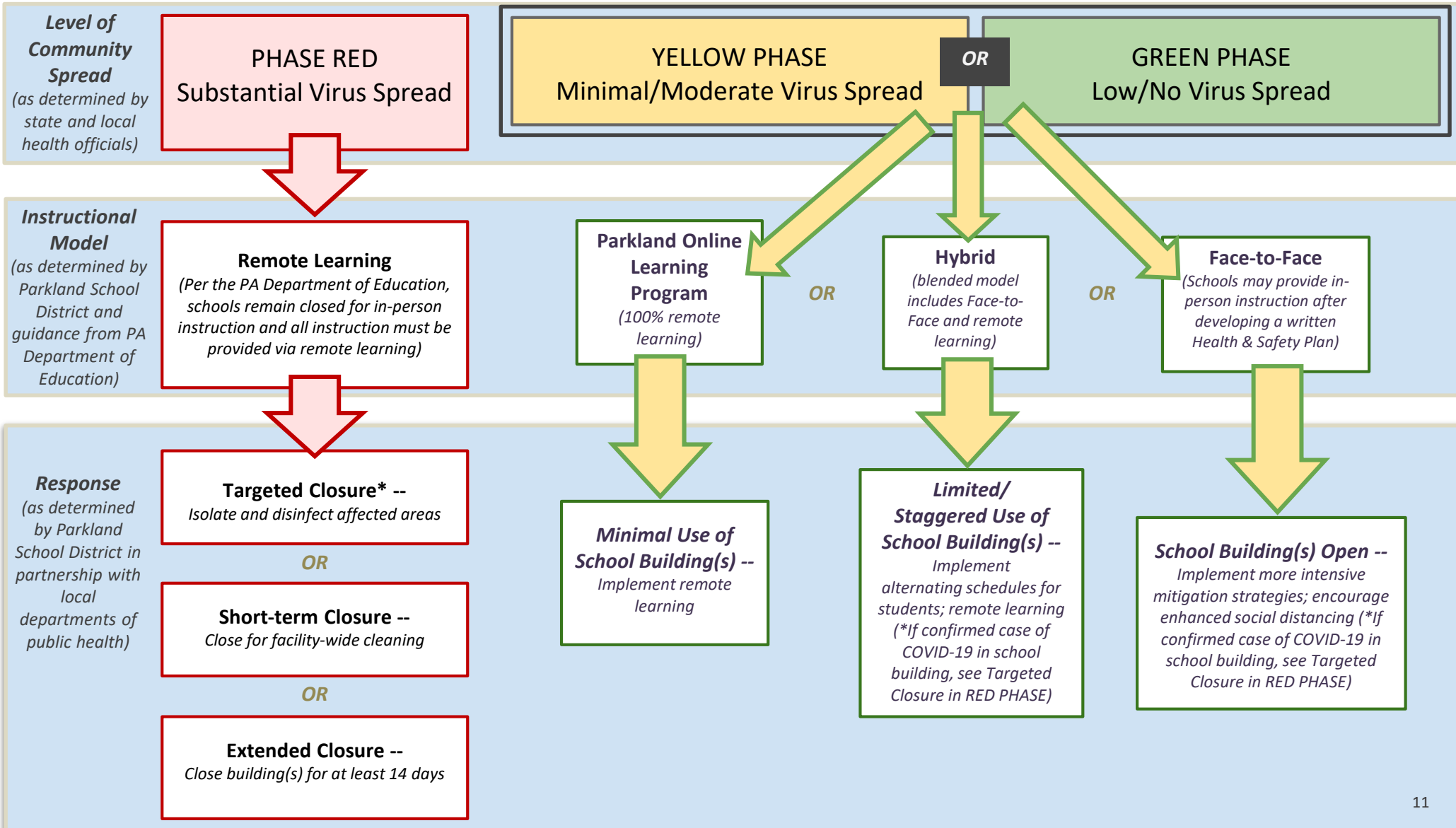
PARKLAND SCHOOL DISTRICT

Health and Safety Plan

Decision Tree

Lead Individual:
Richard Sniscak,
Superintendent
of Schools

Parkland School District's Health and Safety Plan for restarting school is constructed to provide a flexible framework to address challenges that may develop throughout the 2020-2021 school year. Instead of a one-size-fits-all approach, this Decision Tree provides a menu of instructional models and responses the District can adopt to ensure the continued success and safety of students and staff. The Department of Health will continue to monitor community transmission rate and other surveillance metrics across the Commonwealth, including Pre-K to 12 school specific outbreaks of COVID -19. Based on this disease monitoring and surveillance, DOH may, in close coordination with PDE , issue guidance related to targeted school closures as part of a wider public health mitigation strategy.





PARKLAND SCHOOL DISTRICT

Health and Safety Plan Pandemic Response Team

The Pandemic Response Team is responsible for facilitating the local planning process, monitoring implementation of the Health and Safety Plan, and continued monitoring of local health data to assess implications for school operations and potential adjustments to the Health and Safety Plan throughout the school year.

NAME	POSITION	ROLES AND RESPONSIBILITIES
Richard Sniscak	Superintendent	Plan Development and Response Team
Dr. Rod Troutman	Assistant Superintendent	Plan Development and Response Team
Tracy Smith	Assistant to the Superintendent for Operations	Plan Development and Response Team
John Vignone	Director of Business Administration	Plan Development and Response Team
Sheri Deeb	Supervisor of Health and Wellness, Pandemic Coordinator	Plan Development and Response Team
Brenda DeRenzo	Director of Student Services	Plan Development and Response Team
Pam Kelly	Director of Human Resources, Parent	Plan Development and Response Team
Kelly Rosario	Director of Curriculum & Instruction and Professional Development	Plan Development and Response Team
David Keppel	Director of School Services	Plan Development and Response Team
Lori Seier	Director of Food Services	Plan Development and Response Team
Nicole McGalla	Director of Communication and Development, Parent	Plan Development and Response Team
Dr. Anthony Naradko	Director of Safety and Security, Parent	Plan Development and Response Team
Bill Dreisbach	Director of Athletics, Parent	Plan Development and Response Team
Mark Stutz	Director of Visual and Performing Arts	Plan Development and Response Team
Andrew Weber	Supervisor of Special Education, Parent	Plan Development and Response Team
James Moniz	Principal, Parkland High School	Plan Development and Response Team
Dr. Michelle Minotti	Principal, Springhouse Middle School, Parent	Plan Development and Response Team
Todd Gombos	Principal, Orefield Middle School	Plan Development and Response Team
Karen Auliso	Principal, Kratzer Elementary School	Plan Development and Response Team
Scott Bartman	Principal, Parkway Manor Elementary School	Plan Development and Response Team
Tim Chorones	Principal, Fogelsville Elementary School	Plan Development and Response Team
Karen Dopera	Principal, Veterans Memorial Elementary School	Plan Development and Response Team
Dr. Jamie Giaquinto	Principal, Cetronia Elementary School	Plan Development and Response Team
Michael Gehringer	Principal, Kernsville Elementary School	Plan Development and Response Team
Damian Goodman	Principal, Schnecksville Elementary School	Plan Development and Response Team
Rob Holmes	Principal, Ironton Elementary School	Plan Development and Response Team
Diana Schantz	Principal, Jandl Elementary School	Plan Development and Response Team
Dr. Elise Jones	School Physician for Parkland School District, St. Luke's University Health Network	Plan Development and Response Team
Thomas D. McGroarty	Public Health Preparedness Coordinator, PA Department of Health	Plan Development and Response Team
Bradley Petrohoy	Operations and Training Coordinator, Lehigh County Emergency Management	Plan Development and Response Team
Vicky Kistler	Director of Health, Allentown Bureau	Response Team
Jeffrey Kowalski	Senior Network Director of Urgent Care and Occupational Medicine, SLUHN	Plan Development and Response Team
Dr. Carmine Pellosie	Chief, Division of Occupational Medicine, Department of Medicine, LVHN	Plan Development and Response Team



PARKLAND SCHOOL DISTRICT

Health and Safety Plan

Face Coverings

Lead Individual:
Richard Sniscak,
Superintendent
of Schools

PDE Requirements: Use of face coverings (masks or face shields) by all staff;
Use of face coverings (masks or face shields) by older students (as appropriate)

Level of Community Spread (as determined by state and local health officials)

<p style="text-align: center;">RED PHASE Substantial Virus Spread</p>	<p style="text-align: center;">YELLOW PHASE Minimal/Moderate Virus Spread</p>	<p style="text-align: center;">GREEN PHASE Low/No Virus Spread</p>
<p>Order Requiring Universal Face Coverings announced July 1, 2020 by Governor Wolf and the Secretary of the Pennsylvania Department of Health, Dr. Levine.</p> <p>All individuals ages 2 and up, including school students, are required to wear face coverings while indoors unless they are six feet apart or unable to do so for health reasons.</p> <p>All essential employees will be required to wear a face covering to enter and work in any District facility.</p> <p>If you do not have a face covering, one will be made available for essential employees and visitors at the designated point of entrance.</p> <p>Staff are encouraged to wear their own face coverings as appropriate.</p>	<p>Order Requiring Universal Face Coverings announced July 1, 2020 by Governor Wolf and the Secretary of the Pennsylvania Department of Health, Dr. Levine.</p> <p>All individuals ages 2 and up, including school students, are required to wear face coverings while indoors unless they are six feet apart or unable to do so for health reasons or documented disability.</p> <p>Staff and students outside the building on school property may remove face coverings, while remaining socially distant (6 feet) from other individuals.</p> <p>Students</p> <ul style="list-style-type: none"> ● Students are required to wear their own face coverings, which must comply with district dress code policy. ● Students are encouraged to have a backup face covering available. <p>All students K-12 will wear a face covering</p> <ul style="list-style-type: none"> ● at the bus stop if unable to maintain social distancing (6 feet); ● on the school bus; ● when entering and exiting the building; ● in the classroom; ● when passing classes; ● during any movement through building; ● in the cafeteria. Once seated 6 feet apart to eat, the face covering may be removed until the student finishes eating. ● Under Section 504 of the Rehabilitation Act of 1973, school districts have a “child find” responsibility to identify all student with disabilities. If a student comes to school unmasked, claiming a medical condition, that student will be immediately referred for a Section 504 evaluation to determine the extent of the student’s medical condition and whether the student qualifies for Section 504 accommodations. <p>K-5 students will receive face covering breaks throughout the school day (as scheduled in each building), maintaining 6 ft. social distancing during breaks.</p>	<p style="text-align: center;">SAME GUIDELINES AS YELLOW PHASE</p>



PARKLAND SCHOOL DISTRICT

Health and Safety Plan

Face Coverings (cont.)

Lead Individual:
Richard Sniscak,
Superintendent
of Schools

PDE Requirements: Use of face coverings (masks or face shields) by all staff;
Use of face coverings (masks or face shields) by older students (as appropriate)

Level of Community Spread (as determined by state and local health officials)

RED PHASE Substantial Virus Spread	YELLOW PHASE Minimal/Moderate Virus Spread	GREEN PHASE Low/No Virus Spread
Resources <ul style="list-style-type: none"> • How to wear a mask • PA DOH Universal Face Coverings Order • PA DOH Help Stop the Spread: Wear a Mask in Public • CDC Considerations for Wearing Face Cloth Coverings 	Staff <ul style="list-style-type: none"> • Staff are required to wear face coverings, which must comply with district dress code policy. • Staff are encouraged to provide face coverings from home. • Face shields will be provided to all teachers, substitute teachers, and support staff that work directly with students. • If a specific type of face covering is required for staff, it will be provided by the district. Visitors/Volunteers <ul style="list-style-type: none"> • Face coverings will be required for all visitors/volunteers entering the building and while visiting the building. Resources <ul style="list-style-type: none"> • How to wear a mask • PA DOH Universal Face Coverings Order • PA DOH Help Stop the Spread: Wear a Mask in Public • CDC Considerations for Wearing Face Cloth Coverings 	SAME GUIDELINES AS YELLOW PHASE



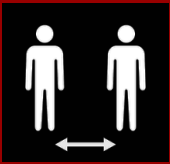
PARKLAND SCHOOL DISTRICT

Health and Safety Plan Supporting Teaching & Learning

Lead Individuals:
Tracy Smith, Assistant to the Superintendent for Operations; Kelly Rosario, Director of Curriculum and Instruction & Professional Development; and Brenda DeRenzo, Director of Student Services

Level of Community Spread (as determined by state and local health officials)

RED PHASE Substantial Virus Spread	YELLOW PHASE Minimal/Moderate Virus Spread	GREEN PHASE Low/No Virus Spread
<p>Schools remain closed for in-person instruction.</p> <p>Instruction delivered via remote learning for all children.</p>	<p>Face-to-Face Schools provide in-person instruction by implementing the recommendations outlined in the Health and Safety Plan.</p> <p>Hybrid Implemented by the Superintendent in response to direction by the PA Department of Education or PA Department of Health, or if school buildings are not permitted/not able to operate at maximum capacity.</p> <p>Students will be split into two groups by last name/ household name, and instruction will be delivered in both an asynchronous online and traditional classroom setting according to the following schedule:</p> <p>Team A: Last Name Begins with A - L</p> <ul style="list-style-type: none"> Monday & Tuesday: In-person instruction Wednesday: Remote Instruction (synchronous/asynchronous learning, staff planning time and office hours) Thursday & Friday: Asynchronous remote Instruction <p>Team B: Last Name Begins with M - Z</p> <ul style="list-style-type: none"> Monday & Tuesday: Asynchronous remote Instruction Wednesday: Remote Instruction (synchronous/ asynchronous learning, staff planning time and office hours) Thursday & Friday: In-person Instruction <p>Grade K-12 students will have access to digital content resources through the district’s Learning Management System, Schoology. All students will have access to a personal learning device, and will take their device home daily except in grades K-1. The district will help to ensure students have access to the Internet at home using a variety of options available at PSD Digital Equity Resources.</p> <p>Parkland Online Learning Program Remote learning through the Parkland Online Learning Program.</p> <p>Establish Academic Baseline</p> <ul style="list-style-type: none"> Administer educational assessments. Conduct meetings with teachers to review student data and implement the Response to Instruction and Intervention (RTII) process. <p>Provide additional instructional supports</p> <ul style="list-style-type: none"> Target interventions and supports for students through the RTII process. Students with disabilities (compensatory services based on student data). 	<p>SAME GUIDELINES AS YELLOW PHASE</p>



PARKLAND SCHOOL DISTRICT

Health and Safety Plan

Social Distancing and Other Safety Protocols

Lead Individual:
Dr. Rod Troutman,
Assistant
Superintendent

PDE Requirements: Classroom/learning space occupancy that allows for 6 feet of separation among students and staff throughout the day, to the maximum extent feasible; Restricting the use of cafeterias and other congregate settings, and serving meals in alternate settings such as classrooms; Posting signs, in highly visible locations, that promote everyday protective measures, and how to stop the spread of germs

Level of Community Spread (as determined by state and local health officials)

RED PHASE Substantial Virus Spread	YELLOW PHASE Minimal/Moderate Virus Spread	GREEN PHASE Low/No Virus Spread
<p>Schools remain closed for in-person instruction. Instruction delivered via remote learning for all children.</p> <p>Essential staff</p> <ul style="list-style-type: none"> Must adhere to social distancing guidelines. Adjusted shifts and staggered schedules may be applied. <p>CDC Social Distancing</p> <p>Building Level Plans Elementary Building Plans Secondary Building Plans</p>	<p>Classroom</p> <ul style="list-style-type: none"> Maintain social distancing practice to the maximum extent feasible and appropriate. CDC Social Distancing Limit interactions between students to the maximum extent feasible and appropriate. Limit the sharing of supplies/materials to the maximum extent feasible and appropriate. Provide additional supplies to the classroom to minimize sharing of supplies. No field trips and large group assemblies. Organized with desks all facing the same direction as feasible. 3-6 feet between desks to the maximum extent feasible and appropriate. <p>Offices and Other Areas</p> <ul style="list-style-type: none"> Social distancing practices will be adhered to the maximum extent feasible and appropriate. Protective barriers and floor markings to instruct staff and visitors of proper social distancing. <p>See Physical Education, Recess, and Arts sections for additional information.</p> <p>Cafeteria Capacity and/or Alternative Serving Models:</p> <ul style="list-style-type: none"> Maximum capacity will be determined to accommodate 6' social distancing. Meals will be served in the cafeterias and other spaces as appropriate with limited, spaced and/or assigned seating. Entrance and exit flow paths, with appropriate spacing, will be determined at each building. Cohort seating will exist at the elementary level. <p>Movement</p> <ul style="list-style-type: none"> See Building Plans <p>Building Level Plans Elementary Building Plans Secondary Building Plans</p> <p>Amer Acad of Pediatrics COVID-19 Planning Considerations: Guidance for School Re-entry</p>	<p>SAME GUIDELINES AS YELLOW PHASE</p> <p>WITH THE FOLLOWING EXCEPTION(S): Large group assemblies are postponed until social distancing restrictions allow participation without accommodations.</p> <p>Building Level Plans Elementary Building Plans Secondary Building Plans</p> <p>American Academy of Pediatrics COVID-19 Planning Considerations: Guidance for School Re-entry</p>



PARKLAND SCHOOL DISTRICT

Health and Safety Plan

Protecting Vulnerable Populations

PDE Requirements: Protecting students and staff at higher risk for severe illness

Lead Individuals:
 Dr. Rod Troutman, Assistant Superintendent; Brenda DeRenzo, Director of Student Services; and Pam Kelly, Director of Human Resources

Level of Community Spread (as determined by state and local health officials)

RED PHASE Substantial Virus Spread	YELLOW PHASE Minimal/Moderate Virus Spread	GREEN PHASE Low/No Virus Spread
<p>Schools remain closed for in-person instruction.</p> <p>Instruction delivered via remote learning for all children.</p>	<p>Isolation rooms exist in each building to separate anyone from the general population who may be exhibiting COVID Symptoms.</p> <p>Staff and students will be identified that are considered a higher risk for severe illness due to underlying medical conditions during this COVID-19 pandemic.</p> <p>Staff members needing additional accommodations due to COVID-19 will be considered on a case by case basis and should contact Human Resources.</p> <p>Students needing additional accommodations due to COVID-19 will be considered on a case by case basis.</p> <p>Social/Emotional Needs</p> <ul style="list-style-type: none"> • Availability of counseling services on site for staff experiencing trauma/anxiety. • Class Chats pertaining to mental health and well-being during first week of school. • Weekly Class Chats during first month of school to develop connectedness, classroom routines, stamina, and attention. • During first week of school, core teams review student crisis data that occurred throughout the school closure. Counselors will meet individually with the students who were identified and communicate with parents. • High school and middle school students in need of support may participate in counselor run seminars and/ or be referred for counseling services. • Elementary school students in need of support may participate in the BounceBack Program with school counselors. 	<p>SAME GUIDELINES AS YELLOW PHASE</p>



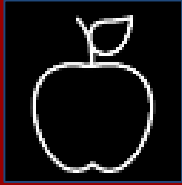
PARKLAND SCHOOL DISTRICT

Health and Safety Plan Professional Development

Lead Individuals - Dr. Rod Troutman, Assistant Superintendent; Tracy Smith, Assistant to the Superintendent for Operations; Kelly Rosario, Director of Curriculum and Instruction & Professional Development and Brenda DeRenzo, Director of Student Services

PDE Requirement: Schedules for training of all faculty and staff on the implementation of the Health and Safety Plan before providing services to students

Topic	Audience	Lead Person/Position	Materials, Resources and Session Format	Start Date	Completion Date
Hand Washing	Staff, Students, Parents	Building Certified School Nurse/ Supervisor of Health Services & Wellness	Electronic, In-Person, Posters	July 28	September 3
Respiratory Etiquette	Staff, Student, Parents	Building Certified School Nurse/ Supervisor of Health Services & Wellness	Electronic, In-Person, Posters	August 25	September 3
Social Distancing in school and on the bus/bus stop	Staff, Students, Parents	Director of Safety & Security/ Transportation Department Administration/ Building Administration	Building Plans, Electronically, In- person	July 28	September 3
Health Room Guidelines	Staff, Students	Building Certified School Nurse	Building Plans, In-person	August 25	August 27
John Hopkins Contact Tracing Course	Health Room Staff	Certified School Nurses	On-Line	June 13	August 31
PSD Health & Safety Plan	Staff, Students, Parents	Building Administration/ Supervisors	Electronically, In-person	July 28	August 27
Building Health & Safety Plan	Staff, Students, Parents	Building Administration	Electronically, In-Person	July 28	August 27
Bus Safety	Staff, Students, Parents	Director of Safety & Security/ Transportation Department/Building Administration	Electronically, In-Person	July 28	September 3
Scheduling appointments for students to visit offices (Nurse, Guidance, Psychologist, etc.)	Staff, Students	Building Administration	In-Person	August 25	September 3
Training on appropriate cleaning, sanitizing, and PPE	Essential Staff	Director of School Services	Electronically, In-Person	August 1	August 15
Identifying students experiencing trauma and/or anxiety	Staff	Director of Student Services/Building Psychologists	In-Person	August 25	August 27
Programs to address trauma and/or anxiety in students	Counselors	Director of Student Services/ Web- based Trainings	Online trainings	August 15	August 27



PARKLAND SCHOOL DISTRICT

Health and Safety Plan

Food Services

Lead Individual:
Lori Seier,
Director of Food
Services

PDE Requirement: Procedures for restricting the use of cafeterias and serving meals in classrooms

Level of Community Spread (as determined by state and local health officials)

RED PHASE Substantial Virus Spread	YELLOW PHASE Minimal/Moderate Virus Spread	GREEN PHASE Low/No Virus Spread
<p>School kitchens are closed.</p> <p>Weekly distribution of food boxes will be coordinated and communicated by the REACH Team.</p>	<p>Menu choices will be reduced.</p> <p>No breakfast service-first day of school.</p> <p>No tray service.</p> <p>All menu items will be wrapped, prepackaged, boxed, or bagged for distribution.</p> <p>All items will be disposable.</p> <p>Points of Contact</p> <ul style="list-style-type: none"> ● No cash accepted at school buildings. ● No deposits accepted at school buildings. ● All deposits will be centralized and accepted at the Food Services office. ● Checks made payable to PSD Cafeteria will be accepted at the food services office, located at The Troxell Building 2219 N. Cedar Crest Blvd., Allentown 18104. <p>Shared Items</p> <ul style="list-style-type: none"> ● No salad bars. ● No self-serve bars. ● Silverware, napkins, and condiments will be distributed on serving lines and/or at cashier stations. ● Limited a la carte - all prepackaged. 	<p>SAME GUIDELINES AS YELLOW PHASE</p>



PARKLAND SCHOOL DISTRICT

Health and Safety Plan

Food Services (cont.)

Lead Individual:
Lori Seier,
Director of Food
Services

Level of Community Spread (as determined by state and local health officials)

	<p>Elementary</p> <ul style="list-style-type: none"> • Students will maintain social distancing when entering the serving line. • Each menu item is displayed with signage. • Student points to order. • Servers will bag or box meals and add appropriate silverware and condiments. • Server allows students to grab a bag or box at the end of line. • Cashier identifies student by picture and homeroom. <p>Middle School and High School</p> <ul style="list-style-type: none"> • Students will maintain social distancing when entering the serving line. • Each menu item is displayed. • Student points to order. • Server allows students to grab a bag or box at the end of the line. • Remove pin pads at cashier stations and replace with scanners. • Student's ID cards will be barcoded with the student ID number. • Student swipes ID card at cashier station and exits the serving line. <p>Additional Services</p> <ul style="list-style-type: none"> • If the student population is reduced to 50% and/or a hybrid schedule is implemented, the food services office will submit a waiver to PDE to allow the department to prepare "meals to go" for students. • Meals to go will represent the 3 days that students are not in school. • Wednesdays will be the designated pick up day. • Times to be determined. <p>Catering</p> <ul style="list-style-type: none"> • No catering. • No birthday bags and no outside food or treats may be brought into school for classroom celebrations. 	<p>SAME GUIDELINES AS YELLOW PHASE</p> <p>WITH THE FOLLOWING EXCEPTION(S):</p> <p>Additional Services</p> <ul style="list-style-type: none"> • Limited catering as determined by Administration.
--	---	--



PARKLAND SCHOOL DISTRICT

Health and Safety Plan

Facilities Cleaning, Sanitizing, Disinfecting and Ventilation

Lead Individual:
David Keppel,
Director of
School Services

PDE Requirements: Cleaning, sanitizing, disinfecting, and ventilating learning spaces, surfaces, and any other areas used by students (restrooms, drinking fountains, hallways, and transportation)

Level of Community Spread (as determined by state and local health officials)

<p>RED PHASE Substantial Virus Spread</p>	<p>YELLOW PHASE Minimal/Moderate Virus Spread</p>	<p>GREEN PHASE Low/No Virus Spread</p>
<p>School buildings are closed for in person instruction. Instruction will be delivered through remote learning for all children.</p> <p>Cleaning, sanitizing, disinfecting will be performed in accordance with current CDC and DOH guidelines. EPA approved products will be used in accordance with labeling requirements and staff will be trained on how to appropriately use these products.</p> <p>CDC Disinfecting Your Facility</p> <p>Buildings are cleaned and disinfected.</p> <p>Daily cleaning and disinfection of all utilized spaces by essential employees.</p> <p>Continue cleaning excessively touched areas throughout the day, including areas used by essential employees.</p> <p>Areas not being used or occupied for 7 days or longer only need routine cleaning when reopening.</p>	<p>Cleaning, sanitizing, disinfecting will be performed in accordance with current CDC and DOH guidelines. EPA approved products will be used in accordance with labeling requirements and staff will be trained on how to appropriately use these products.</p> <p>CDC Disinfecting Your Facility</p> <p>Sanitization Requirements</p> <ul style="list-style-type: none"> • Clean and sanitize each classroom, restroom, hallway and touch points per CDC requirements throughout the course of the school day. • Staff may clean their own personal contact areas and electronics. Cleaning products will be provided by the district. <p>Restrooms</p> <ul style="list-style-type: none"> • The restrooms will be cleaned and sanitized when the students arrive for school. Additionally, the restrooms will be cleaned and/or sanitized a minimum of one time between the start of school and lunch and twice after lunch. <p>Hallways</p> <ul style="list-style-type: none"> • Routinely sanitize door knobs, handrails and touch points in hallways throughout the course of the day. <p>Transportation</p> <ul style="list-style-type: none"> • Sanitize buses with sprayer using disinfectant solution after the morning runs and following the end of the day runs. 	<p>SAME GUIDELINES AS YELLOW PHASE</p>



PARKLAND SCHOOL DISTRICT

Health and Safety Plan

Facilities Cleaning, Sanitizing, Disinfecting and Ventilation (cont.)

Lead Individual:
David Keppel,
Director of
School Services

Level of Community Spread (as determined by state and local health officials)

<p>School buildings are closed for in person instruction. Instruction will be delivered through remote learning for all children.</p> <p>Buildings are cleaned and disinfected.</p> <p>Daily cleaning and disinfection of all utilized spaces by essential employees.</p>	<p>Touch Points</p> <ul style="list-style-type: none"> • Daily touch points cleaning of desks, door knobs, and handrails. • Staff/students may disinfect highly touched surfaces within the classroom as deemed appropriate by the classroom teacher. <p>Nursing Suites/Isolation Room</p> <ul style="list-style-type: none"> • Daily use of the sanitizing machines <p>Exposure Incident In the event of an exposure the district will follow the current CDC recommendations which may include:</p> <ul style="list-style-type: none"> • Close off and ventilate areas visited by that individual • Wait a minimum of 24 hours, or as long as practical, before beginning cleaning and disinfection • Clean and disinfect all spaces, especially commonly used rooms and shared electronic equipment • Identify and notify employees who were in close contact with that individual (within about 6 feet for about 15 minutes); and • Confirm that the district facility has enough employees to perform these protocols effectively and immediately. <p>Playground Equipment</p> <ul style="list-style-type: none"> • Per CDC guidelines, cleaning of playground equipment will be done routinely. <p>Ventilation Systems</p> <ul style="list-style-type: none"> • School Services will check the operation of the ventilation systems and filters will be changed on a monthly basis. • Windows may be opened, weather permitting, to increase air circulation. 	<p>SAME GUIDELINES AS YELLOW PHASE</p>
---	---	---



PARKLAND SCHOOL DISTRICT

Health and Safety Plan

Facilities Cleaning, Sanitizing, Disinfecting and Ventilation (cont.)

Lead Individual:
David Keppel,
Director of
School Services

Level of Community Spread (as determined by state and local health officials)

<p>All non-district activities (facility rentals) will be prohibited during the pandemic.</p>	<p>Kitchens/Cafeteria</p> <ul style="list-style-type: none"> • Kitchens will undergo additional cleaning routinely. • Food Services staff will clean and sanitize kitchen equipment, surfaces, hand washing stations, and all other frequently touched surfaces throughout their work day. • Serving lines will be sanitized after breakfast and each grade or lunch period. <p>Cafeteria tables cleaned as follows:</p> <p>ELEMENTARY</p> <ul style="list-style-type: none"> • Food Services staff after breakfast • Custodial staff and Playground/Cafeteria aides after each lunch period <p>MIDDLE SCHOOL</p> <ul style="list-style-type: none"> • Food Services staff after breakfast and after each lunch period <p>HIGH SCHOOL</p> <ul style="list-style-type: none"> • Food Services staff after breakfast • Custodial staff and one HS hall monitor <ul style="list-style-type: none"> ○ after second period study hall ○ after each lunch period ○ after school <p>Custodial/Maintenance Personal Protective Equipment (PPE)</p> <ul style="list-style-type: none"> • PPE will be worn as required to perform daily tasks • Staff will receive professional development on when and how to properly apply and remove PPE • Gloves will be changed frequently throughout the work day • Areas or surfaces should first be cleaned with soap and water <p>All non-district activities (facility rentals) will be prohibited during the pandemic.</p>	<p>SAME GUIDELINES AS YELLOW PHASE</p>
---	--	---



PARKLAND SCHOOL DISTRICT

Health and Safety Plan

Transporting Students

Lead Individual:
David Keppel,
Director of
School Services

Level of Community Spread (as determined by state and local health officials)

RED PHASE Substantial Virus Spread	YELLOW PHASE Minimal/Moderate Virus Spread	GREEN PHASE Low/No Virus Spread
<p>School buildings are closed with no public, private, charter or parochial transportation services provided, and there will be no in-person instruction.</p> <p>Buses utilized for essential business/emergency functions only as authorized by District Administration.</p>	<p>Hand sanitizer is provided for students and drivers on each bus/van. Students entering and exiting the bus/van are encouraged to use hand sanitizer.</p> <p>No Field Trips.</p> <p>Buses may operate with a maximum of two students per seat.</p> <p>Siblings should sit together on the bus.</p> <p>Secondary school buses will be loaded from back to front.</p> <p>Elementary School buses will be loaded back to front with the exception of kindergarten and first grade students who will sit in the front of the bus.</p> <p>Morning bus run - students will disembark from front to back.</p> <p>Afternoon bus run - students will disembark by bus stop.</p> <p>Sanitize buses with sprayer using disinfectant solution after the morning runs and following the end of the day runs.</p> <p>Practice social distancing while disembarking the bus and while waiting at bus stops.</p> <p>Air out the bus/van before and after runs, weather permitting.</p> <p>If a student is diagnosed with a case of COVID-19, the bus/van would be removed from service for cleaning and disinfecting.</p> <p>CDC What Bus Operators Need to Know about COVID-19</p>	<p>SAME GUIDELINES AS YELLOW PHASE</p>



PARKLAND SCHOOL DISTRICT

Health and Safety Plan

Monitoring Student & Staff Health

Lead Individual:
Sheri Deeb,
Supervisor of Health
and Wellness

PDE Requirements: Monitoring students and staff for symptoms and history of exposure; Isolating or quarantining students, staff, or visitors if they become sick or demonstrate a history of exposure; Returning isolated or quarantined staff, students, or visitors to school

Level of Community Spread (as determined by state and local health officials)

RED PHASE Substantial Virus Spread	YELLOW PHASE Minimal/Moderate Virus Spread	GREEN PHASE Low/No Virus Spread
<p>Schools are closed and instructional delivery is via remote learning.</p> <p>Monitoring students and staff for symptoms and history of exposure: Essential employee prescreening continues.</p> <p>An employee, by entering the work site, acknowledges that s/he has complied with the protocols issued by the district concerning the required steps to be taken prior to entering the work site or while at the work site and meets the criteria to be present at the work site.</p> <p>Employee Wellness Form-Red Employee Wellness Guidelines-Red</p> <p>Travel Advisories:</p> <ul style="list-style-type: none"> • PA Department of Health COVID-19 Information for Travelers • CDC Considerations for Travelers-Coronavirus in the US 	<p>Monitoring students and staff for symptoms and history of exposure</p> <ul style="list-style-type: none"> • Prescreening of students and staff prior to boarding a bus or entering a district facility will be achieved with the following forms daily. • All staff complete daily symptoms screening prior to reporting to work and will remain home if ill. • An employee, by entering the work site, acknowledges that s/he has complied with the protocols issued by the district concerning the required steps to be taken prior to entering the work site or while at the work site and meets the criteria to be present at the work site. • Daily symptom screening for each child will be completed by all parents/guardians at home prior to boarding the school bus or entering a District building. • No children with COVID-19 symptoms will be sent on a bus or brought to school. • Current CDC and PA DOH guidelines will be utilized in assessing potential cases and exposure. • Students and staff should remain at home if feeling ill or answering “Yes” to any of the prescreening questions. • Students and staff will report to the nursing suite if feeling symptomatic. • Nursing staff will wear PPE during the school day. • Suspected cases will be masked and placed in the building’s isolation rooms to await departure. • The Supervisor of Health and Wellness or designee will be in communication with the PA DOH with suspected cases of COVID-19. • Self reported positive cases will be confirmed by the PA DOH prior to notifications. <p>Employee Wellness Form-Yellow Employee Wellness Guidelines- Yellow</p> <p>Student Wellness Form</p> <p>Travel Advisories:</p> <ul style="list-style-type: none"> • PA Department of Health COVID-19 Information for Travelers • CDC Considerations for Travelers-Coronavirus in the US 	<p>SAME GUIDELINES AS YELLOW PHASE</p> <p>WITH THE FOLLOWING EXCEPTION(S):</p> <p>Employee Wellness Form-Green Employee Wellness Guidelines-Green</p>



PARKLAND SCHOOL DISTRICT

Health and Safety Plan

Monitoring Student & Staff Health (cont.)

Lead Individual:
Sheri Deeb,
Supervisor of Health
and Wellness

PDE Requirements: Monitoring students and staff for symptoms and history of exposure; Isolating or quarantining students, staff, or visitors if they become sick or demonstrate a history of exposure; Returning isolated or quarantined staff, students, or visitors to school

Level of Community Spread (as determined by state and local health officials)

When an Employee/Student becomes ill or demonstrates a history of exposure:

Employee

- Mandatory report to health care provider for additional advice including recommendations on isolations, quarantine and testing.
- Employees should be referred to the Supervisor of Health & Wellness or the Director of Human Resources for COVID-19 procedures including return to work procedures and use of benefitted time for absence.

Return to School or Work (after COVID-19 diagnosis)

Return to school post COVID-19 diagnosis with mild symptoms (not hospitalized):

- When 2 negative COVID tests 24 hours apart are obtained and/or public health clearance and/or
- Individual has improvement in respiratory symptoms (e.g., cough, shortness of breath)
- At least ten days have passed since symptoms first appeared
- Symptoms have resolved: no fever (>100.4F) for 72 hours without fever reducing medications and improvement of respiratory symptoms (cough, shortness of breath).
- Individuals should be evaluated and provided a return to work/school note from a medical provider (MD, DO, NP, PA, DOH).
- Individuals without a medical provider can contact the local public health agency.

Resource

- [CDC Public Health Guidance for Community-Related Exposure](#)

When an Employee/Student becomes ill or demonstrates a history of exposure:

- Isolation rooms exist in each building to separate anyone from the general population who may be exhibiting COVID-19 symptoms.
- Decision Flow Charts for return to work/school and any necessary quarantine/isolation will be used by the school nurses based on the latest guidance from the DOH.
- Reports to the Department of Health will be made by the school nurse or Supervisor of Health/Wellness.
- Increased cleaning and sanitizing of exposed classrooms and buses will be based on CDC guidance.
- Notification of close contacts will occur once a positive confirmation is obtained from the PA DOH to the school.
- All persons who have been in the presence of a diagnosed individual up to 48 hours prior to symptoms will be excluded from school/work for at least 14 days until the individual has met the PA DOH criteria to discontinue quarantine.
- Classroom instruction for quarantine students will move to 100% eLearning.
- Individuals must be fever free for 24 hours prior to return to work/school without fever reducing medication, if a provider states there is an alternate diagnosis and feels the individual can return to school/work. A doctor's note is required.

Returning isolated or quarantined staff, students, or visitors to school.

- Return to work/school will be permitted in accordance with the current CDC and PA DOH guidelines. A doctor's note is required.

Return to School/ Work (after COVID-19 diagnosis)

Return to school/work post COVID-19 diagnosis with mild symptoms (not hospitalized):

- The District will follow the most recent recommendations provided by the Pennsylvania Department of Health for return to school/work.
- Employees should reach out to Human Resources or the Supervisor of Health and Wellness to determine this timeline.
- Students should reach out to their building school nurse to determine the timeline to return to school.
- Students/staff should be evaluated and provide a return to school/work note from a medical provider (MD, DO, NP, PA, DOH).
- Individuals without a medical provider can contact one of the following local public health agencies
 1. Lehigh Valley Health Network: [E-Visits for coronavirus \(COVID-19\) exposure](#)
 2. St. Luke's University Health Network:
Hotline for Coronavirus COVID 19 Inquiries 1-866-STLUKES (785-8537), option 7 OR coronavirus@sluhn.org

SAME GUIDELINES AS YELLOW PHASE



PARKLAND SCHOOL DISTRICT

Health and Safety Plan

Preventative Measures

Lead Individual:
Sheri Deeb,
Supervisor of Health
and Wellness

PDE Requirements: Hygiene practices for students and staff including the manner and frequency of hand-washing and other best practices

Level of Community Spread (as determined by state and local health officials)

RED PHASE Substantial Virus Spread	YELLOW PHASE Minimal/Moderate Virus Spread	GREEN PHASE Low/No Virus Spread
<p>Schools remain closed for in-person instruction. Instruction delivered via remote learning for all children.</p> <p>Visit our District Homepage for COVID-19 Information and District Education Plan for the latest COVID-19 information.</p> <p>Essential employees must complete the District Employee Wellness Form-Red prior to reporting to work daily and review the Employee Wellness Guidelines-Red</p> <p>Resources</p> <ul style="list-style-type: none"> ● CDC How to Protect Yourself and Others ● How to use gloves ● CDC Symptoms of Coronavirus ● CDC Keeping Children Healthy during the COVID-19 Outbreak ● CDC Communication Toolkit ● PA Department of Health Coronavirus (COVID-19) ● CDC Coronavirus Symptoms and Testing ● CDC Symptoms of Coronavirus ● Pennsylvania's Public Health Emergency 1-877-PA-HEALTH (1-877-724-3258) <p>Crisis Contacts</p> <ul style="list-style-type: none"> ● Crisis Text Line by texting PA to 741-741. ● CDC's Coping with Stress ● PA Mental Health Resources 	<p>Visit our District Homepage for COVID-19 Information and District Education Plan and the latest COVID-19 information.</p> <p>Students</p> <ul style="list-style-type: none"> ● Students must complete the Student Wellness Form daily prior to reporting to the bus stop/school. Students should stay home if they are ill and if they respond "Yes" to any of the questions of the Wellness Form. <p>Staff</p> <ul style="list-style-type: none"> ● Employees must complete the District Employee Wellness Form-Yellow prior to reporting to work daily and review the Employee Wellness Guidelines-Yellow. <p>Mitigation</p> <ul style="list-style-type: none"> ● Stay up-to-date with good hygiene measures such as handwashing, covering coughs, and face coverings by visiting An Ounce of Prevention. ● Handwashing signs are posted in highly visible areas that promote everyday proactive practices throughout our buildings. ● Hand soap and hand sanitizer with at least 60% alcohol, paper towels, and no-touch trash cans in all bathrooms, and frequently trafficked areas are throughout our buildings. ● Staff and Students are encouraged to bring their own hand sanitizer for use. ● Varying levels of PPE will be available for staff. ● Respiratory etiquette information will be posted. <p>Water Fountains/Hydration Stations/ Water Coolers</p> <ul style="list-style-type: none"> ● Water fountains are prohibited. ● Touchless hydrations stations or classroom sinks (staff supervised) will be permitted. ● Staff and Students are encouraged to bring their own water bottle. <p>Student Lockers</p> <ul style="list-style-type: none"> ● Use of student lockers is prohibited unless authorized due to medical necessity. <p>Staff</p> <ul style="list-style-type: none"> ● Water coolers in faculty rooms/offices will not be permitted. 	<p>SAME GUIDELINES AS YELLOW PHASE</p> <p>WITH THE FOLLOWING EXCEPTION(S):</p> <p>Students</p> <p>Students must complete the Student Wellness Form daily prior to reporting to the bus stop/school. Students should stay home if they are ill and if they respond "Yes" to any of the questions of the Wellness Form.</p> <p>Staff</p> <p>Employees must complete the District Employee Wellness Form-Green prior to reporting to work daily and review the Employee Wellness Guidelines-Green.</p> <p>Staff</p> <ul style="list-style-type: none"> ● Water Coolers in faculty rooms/offices are permitted.



PARKLAND SCHOOL DISTRICT

Health and Safety Plan

Preventative Measures (cont.)

Lead Individual:
Sheri Deeb,
Supervisor of Health
and Wellness

Level of Community Spread (as determined by state and local health officials)

	<p>Hand Washing</p> <p>Elementary</p> <ul style="list-style-type: none"> • Prior to leaving the classroom for lunch, upon return from recess, prior to and after any snack, and prior to and after gym class. • Hand sanitizer to be used prior to and after breakfast, after lunch, and when entering and exiting the nursing suite. <p>Middle School/High School</p> <ul style="list-style-type: none"> • Frequent hand washing will be encouraged with students and staff at a minimum of 2 times per day including before and after gym class. • Hand sanitizer is available as students and staff enter serving areas. • Each classroom will have a supply of disinfectant. • Hand sanitizing stations will be available throughout the buildings. <p>Resources</p> <ul style="list-style-type: none"> • CDC How to Protect Yourself and Others • How to use gloves • CDC Symptoms of Coronavirus • CDC Keeping Children Healthy during the COVID-19 Outbreak • CDC Communication Toolkit • PA Department of Health Coronavirus (COVID-19) • CDC Coronavirus Symptoms and Testing • CDC Symptoms of Coronavirus • Pennsylvania’s Public Health Emergency 1-877-PA-HEALTH (1-877-724-3258) <p>Crisis Contacts</p> <ul style="list-style-type: none"> • Crisis Text Line by texting PA to 741-741. • CDC's Coping with Stress • PA Mental Health Resources 	<p>SAME GUIDELINES AS YELLOW PHASE</p>
--	--	---



PARKLAND SCHOOL DISTRICT

Health and Safety Plan

Families and Communication

Lead Individual:
Nicole McGalla, Director
of Community Relations
and Development

Level of Community Spread (as determined by state and local health officials)

RED PHASE Substantial Virus Spread	YELLOW PHASE Minimal/Moderate Virus Spread	GREEN PHASE Low/No Virus Spread
<p>Parkland will use the following forms of communication to engage with families as well as inform parents, students, and staff about COVID-19 symptoms, preventative measures, good hygiene, and school/district specific protocols.</p> <ul style="list-style-type: none"> ● SchoolMessenger Rapid Notification System (email, voicemail and text messaging) ● Signage in facilities ● Schoology (Parkland’s Learning Management System) ● District Website including the Parkland Coronavirus Updates page and a Return to School page that will keep all communication archived and for easy access ● Social Media including Facebook, Twitter, Instagram, and YouTube ● Media Relations ● District Newsletter ● Parkland TV (Channel 65 on RCN and Channel 264 on Service Electric, or 102.9 for digital subscribers) 	<p style="text-align: center;">SAME GUIDELINES AS RED PHASE</p>	<p style="text-align: center;">SAME GUIDELINES AS YELLOW PHASE</p>



PARKLAND SCHOOL DISTRICT

Health and Safety Plan

Visitors and Volunteers

Lead Individual:
Richard Sniscak,
Superintendent
of Schools

PDE Requirements: Identifying and restricting non-essential visitors and volunteers

Level of Community Spread (as determined by state and local health officials)

RED PHASE Substantial Virus Spread	YELLOW PHASE Minimal/Moderate Virus Spread	GREEN PHASE Low/No Virus Spread
<p>Staff Staff are to utilize virtual meeting tools (Zoom, Google Meet, etc.) to attend meetings with visitors to the greatest extent feasible. Examples include, but are not limited to parent/guardian meetings, IEP meetings, and college visits.</p> <p>Visitors/Volunteers Visitors are by appointment only and with the authorization of administration.</p> <p>No volunteers permitted.</p> <p>All authorized visitors must complete the Visitor/Volunteer Wellness Form.</p>	<p>Staff Staff are to utilize virtual meeting tools (Zoom, Google Meet, etc.) to attend meetings with visitors to the greatest extent feasible. Examples include, but are not limited to parent/guardian meetings, IEP meetings, and college visits.</p> <p>Visitors/Volunteers Visitors are by appointment only and with the authorization of administration.</p> <p>Limited time exposure within the building is recommended for all visitors.</p> <p>Volunteers should be limited and must adhere to the same standard of notification and prescreening as an employee.</p> <p>All authorized visitors must complete the Visitor/Volunteer Wellness Form.</p>	<p>SAME GUIDELINES AS YELLOW PHASE</p>



PARKLAND SCHOOL DISTRICT

Health and Safety Plan

Athletics, Arts and Extracurriculars

Lead Individual:
Richard Sniscak,
Superintendent
of Schools

PDE Requirements: Handling sporting activities for recess and physical education classes consistent with CDC Considerations for Youth Sports

Level of Community Spread (as determined by state and local health officials)

RED PHASE Substantial Virus Spread	YELLOW PHASE Minimal/Moderate Virus Spread	GREEN PHASE Low/No Virus Spread
<p>Schools remain closed for in-person instruction. Instruction delivered via remote learning for all children.</p> <p>District sports fields and playgrounds are closed for public use.</p>	<p>Recess & Gym Class Recommendations consistent with CDC Considerations for Youth Sports. CDC GUIDANCE FOR YOUTH SPORTS</p> <p>Outdoor activities whenever feasible.</p> <p>No team sports at recess or during physical education class.</p> <p>No sharing equipment.</p> <p>Discourage any unnecessary contact, create distance between players whenever possible, with social distancing to the maximum extent feasible.</p> <p>Focus on strength, individual skills, conditioning, agility, or technique/strategy only.</p> <p>Locker rooms will be available to secure valuables and for handwashing.</p> <p>Athletics Return to Sport COVID-19 Health & Safety Plan</p> <p>District sports fields and playgrounds are closed for public use.</p> <p>Guidance for Arts Education and Student Activities Addendum</p>	<p>SAME GUIDELINES AS YELLOW PHASE</p> <p>WITH FOLLOWING EXCEPTION(S):</p> <p>Recess & Gym Class Select team sports are introduced with exchange of equipment (balls/rackets) with sanitizing hands of each participant and equipment before and after Gym class and recess.</p> <p>Athletics Return to Sport COVID-19 Health & Safety Plan</p> <p>District sports fields and playgrounds are open for public use.</p> <p>Guidance for Arts Education and Student Activities Addendum</p>



PARKLAND SCHOOL DISTRICT

Health and Safety Plan

Definitions

Asynchronous Instruction	Indicates that the instruction is recorded and is not happening at the same time it is being delivered. E.g. The teacher pre-records instruction and posts the recording in Schoology. Students view the instruction and participate in an online discussion or assignment aligned to the instruction. Students can work on asynchronous instruction at a time that works best for them.	
Cleaning and Disinfecting	Ensuring safe and correct application of disinfectants and keeping out of the reach of children.	CDC Coronavirus Disease 2019 (COVID-19) Frequently Asked Questions
Close Contact	Having close (within 6 ft) and prolonged (generally ≥ 15 minutes) contact with the COVID-19 patient. Contacts at lower risk are persons who had some interactions with the COVID-19 patient for shorter periods of time.	CDC Public Health Guidance for Community-Related Exposure
Coronavirus (COVID-19)	A novel coronavirus is a new coronavirus that has not been previously identified. The virus causing coronavirus disease 2019 (COVID-19) is not the same as the coronaviruses that commonly circulate among humans and cause mild illness, like the common cold.	CDC Coronavirus Disease 2019 (COVID-19) Frequently Asked Questions



PARKLAND SCHOOL DISTRICT

Health and Safety Plan

Definitions (cont.)

Face Coverings	<p>Means a covering of the nose and mouth that is secured to the head with ties, straps, or loops over the ears or is wrapped around the lower face. A face covering includes a plastic face shield that covers the nose and mouth. Face coverings are an additional step to help slow the spread of COVID-19 when combined with everyday preventive actions and social distancing in public settings. Information is provided to staff, students, and families on the proper use, removal, and washing of cloth face coverings. Our requirements regarding face coverings are sensitive to the needs of students and staff with medical issues that make wearing of a face covering inadvisable. Wearing face masks has also been supported by emerging evidence as an effective strategy to reduce transmission.</p>	<p>PO DOH Universal Face Coverings Order FAQ</p> <p>PA Secretary of Health Order for Face Coverings</p> <p>CDC Use of Cloth Face Coverings to Help Slow the Spread of COVID-19</p> <p>CDC How to Wear Cloth Face Coverings</p>
Hand Hygiene	<p>Hand sanitizer should contain at least 60% alcohol and is only used with staff and children who can safely use hand sanitizer. Hand soap may be used.</p>	<p>CDC Hand Hygiene Recommendations</p>
Isolation	<p>Isolation is used to separate people infected with the virus (those who are sick with COVID-19 and those with no symptoms) from people who are not infected. People who are in isolation should stay home until it's safe for them to be around others. In the home, anyone sick or infected should separate themselves from others by staying in a specific "sick room" or area and using a separate bathroom (if available).</p>	<p>CDC Quarantine and Isolation</p>



PARKLAND SCHOOL DISTRICT

Health and Safety Plan

Definitions (cont.)

<p>Quarantine</p>	<p>Quarantine is used to keep someone who might have been exposed to COVID-19 away from others. Quarantine helps prevent spread of disease that can occur before a person knows they are sick or if they are infected with the virus without feeling symptoms. People in quarantine should stay home, separate themselves from others, monitor their health, and follow directions from their state or local health department.</p>	<p>CDC Quarantine and Isolation</p>
<p>Remote Learning, Parkland Online, eLearning</p>	<div style="display: flex; flex-direction: column; align-items: center;"> <div style="border: 1px solid black; border-radius: 15px; background-color: #f0f0e0; padding: 10px; margin-bottom: 10px;">Remote Learning</div> <div style="display: flex; justify-content: space-around; width: 100%;"> <div style="border: 1px solid black; border-radius: 15px; padding: 10px; margin-bottom: 10px;">Parkland Online</div> <div style="border: 1px solid black; border-radius: 15px; padding: 10px; margin-bottom: 10px;">eLearning</div> </div> </div> <div style="border: 1px solid black; padding: 5px; margin-top: 10px;"> <p>Remote learning is an overarching term for learning where the student and the educator are not physically present in a traditional classroom environment. Information is relayed through technology. Remote learning encompasses both Parkland Online and Parkland eLearning options.</p> </div> <div style="border: 1px solid black; padding: 5px; margin-top: 10px;"> <p>Parkland Online offers a rigorous K-12 curriculum aligned to PA standards. This program is an expansion of Parkland’s previous Cyber Learning Program and will be offered as an option for students who want a full-time online learning option for the 2020-2021 school year.</p> </div> <div style="border: 1px solid black; padding: 5px; margin-top: 10px;"> <p>Should the state be in Phase Red and schools are closed, teachers will continue to teach using an eLearning modality similar to what was offered in the spring. eLearning will include more structure, more live instruction and more rigor than this past spring.</p> </div>	
<p>Social Distancing</p>	<p>Limiting face-to-face contact with others is the best way to reduce the spread of coronavirus disease 2019 (COVID-19).</p>	<p>CDC Social Distancing</p>

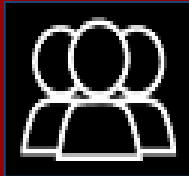


PARKLAND SCHOOL DISTRICT

Health and Safety Plan

Definitions (cont.)

Synchronous Instruction	Indicates that the instruction is happening at the same time it is being delivered. E.g. The teacher and the students are on Google Meet at the same time and instruction is taking place live.	
Vulnerable Populations	Elderly individuals and/or individuals with serious underlying health conditions, including high blood pressure, chronic lung disease, diabetes, obesity, asthma, and those whose immune system is compromised such as by chemotherapy for cancer and other conditions requiring such therapy. Students with low-incidence/high-need disabilities.	CDC People Who Are at Increased Risk for Severe Illness



PARKLAND SCHOOL DISTRICT
Health and Safety Plan
Governing Body Affirmation Statement

The Board of Directors for the Parkland School District reviewed and approved the Parkland School District Health and Safety Plan.

The Plan was approved by a vote of:

_____ Yes
_____ No

Affirmed on July 28, 2020

By: _____

Lisa A. Roth
President, Parkland Board of School Directors

By: _____

John A. Vignone
Board Secretary



PARKLAND SCHOOL DISTRICT

Parkland School District Health and Safety Plan Submissions

Lead Individual:
Richard Sniscak,
Superintendent
of Schools

Approved by Parkland School District Board of School Directors

Date: July 28, 2020

Submitted to Pennsylvania Department of Education

Date: July 29, 2020

Posted on Parkland School District Website

Date: July 29, 2020