

“Virtual” PAT Mtg #4/5 Presentation | Introduction / Overview



Spring Branch ISD

- Travis Stanford
- Kris Drosche
- Noel Moreno
- Dana Johnson



Stantec Architects

- Jennifer Henrikson
- Tracy Eich
- Gretchen Diesel
- Gary Dunn



Welcome to the “Virtual PAT Mtg #4/5”!

We were not able to meet as a group to present at the scheduled PAT Mtg #4 (March 31st) and are still in the “Stay Home / Work Safe” time period that will impact our scheduled PAT Mtg #5 (April 21st).

Feedback from the PAT is valuable to the continued refinement of the design; therefore, we have created the “Virtual PAT Mtg #5” to communicate the design development and seek your individual feedback.

The objective of the “Virtual PAT Mtg #5” presentation is to:

1. Communicate the progress of the design site plan + floor plans.

We have taken the PAT feedback and reviewed progress with SBISD and would like to share the information with you.

2. Seek your individual feedback on a few specific questions relating to the 3D images of exterior design development for the new Bunker Hill ES.

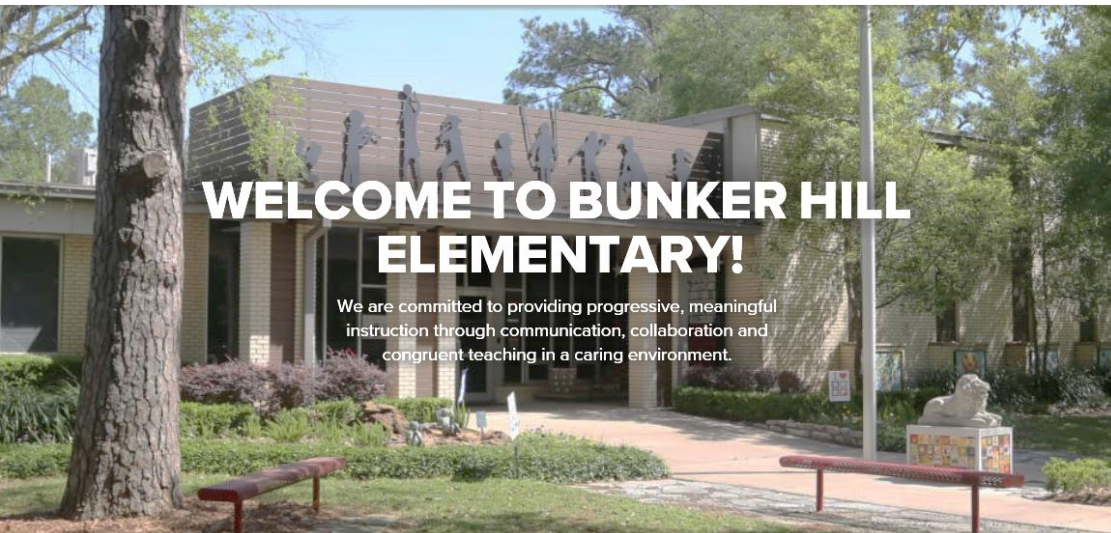
We want to confirm with the PAT that we are heading in the right direction.

We have provided a hyperlink + QR code to a digital survey to collect individual feedback.

We are asking that you submit your survey response before the end of day April 27th.

We hope that you join us in this creative way to stay engaged in the process for design development of the new BHE. We know this would be much easier to accomplish if we were in the same room to discuss with each other.

We look forward to the next time we can meet in person (hopefully at PAT Mtg #6 currently scheduled for May 12th)!



April 21, 2020

Spring Branch ISD
Bunker Hill Elementary

Project Advisory Team Meeting #4/5 (Virtual Presentation)





RECAP

Meeting Agenda:

1. **PAT Process / PAT Mtg #1 thru Mtg #3 Recap**
PAT Charge
PAT Engagement Process Overview
PAT Design Vision + Educational Vision + Guiding Principles
PAT Mtg #3 Concept Layout Voting Results
2. **PAT Mtg #4/5 Focus:** Review Current Status of BHE Design
PAT Information = Updated Plans based on PAT + SBISD Input
PAT Engagement = 3D Exterior Images + Individual Input*
* *Weblink to PAT Individual Input Survey*
3. **Next PAT = May 12th** (Virtual Mtg?)

BHE Project Advisory Team (PAT) – Charge

OVERVIEW

A Project Advisory Team (PAT) will be chartered for the planning of a replacement for **Bunker Hill Elementary School** under the school's project in the 2017 Bond Program.

CHARGE

The PAT will work collaboratively and cooperatively with the architect and SBISD Project Manager **to conceptualize, develop and refine the project's goals and design.**

The PAT will advise on recommendations regarding the planning and development of the replacement of Bunker Hill Elementary School.

These recommendations will be presented by the project's architects:

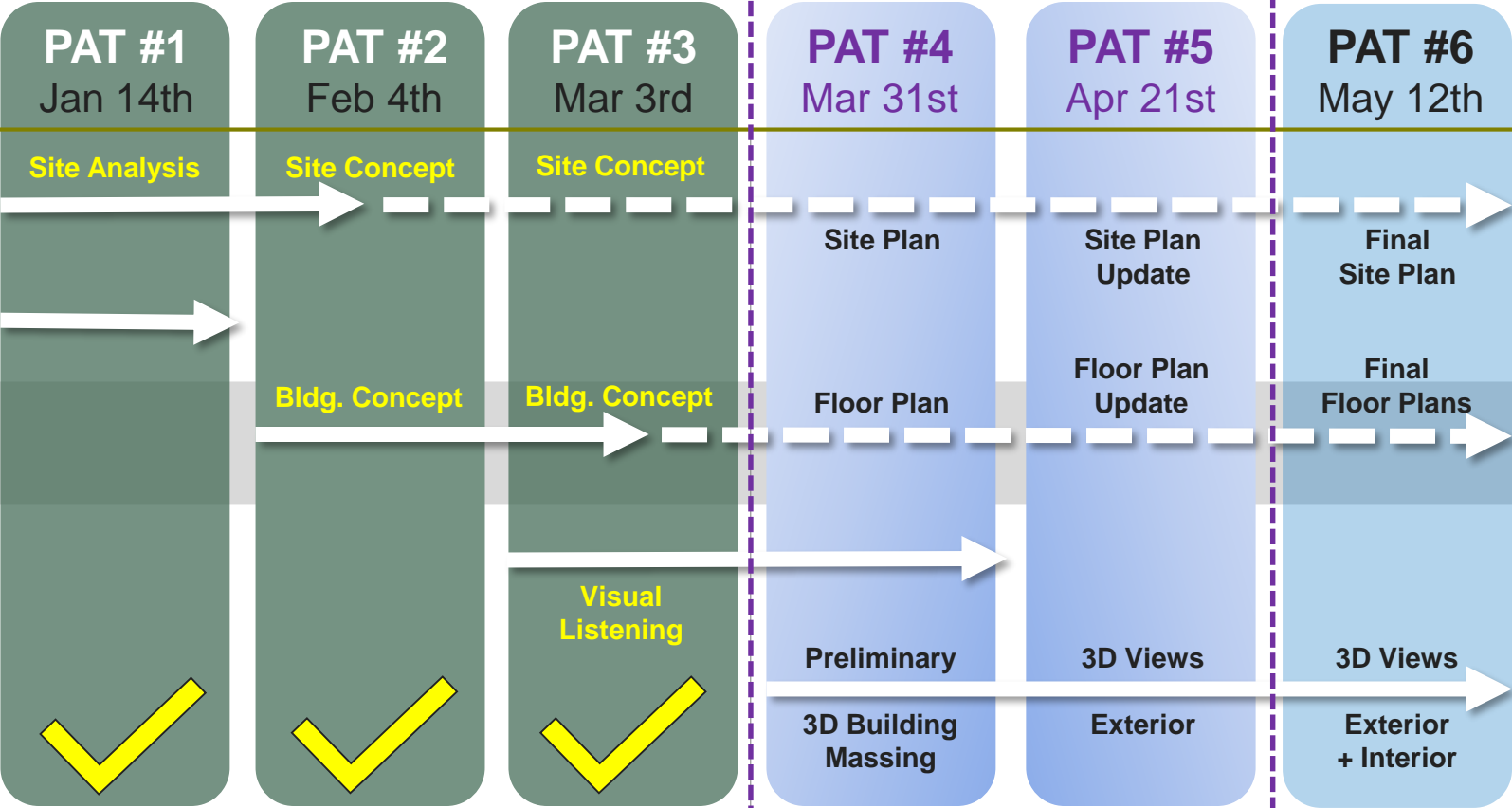
- 1) to the **Superintendent of Schools**, and based on approval from the Superintendent,
- 2) to the **Board of Trustees** for their approval.

The Board of Trustees may act upon the recommendations developed with PAT input by approving, amending, altering or not approving all or any part of the recommendations.

PAT Engagement: Process Overview

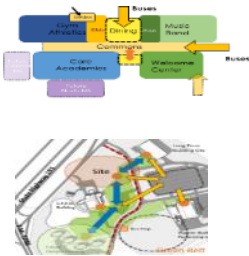
January 2020

- 1 Site Influences
- 2 Program Space Types
- 3 Functional Relationships
- 4 Space Type Attributes
- 5 Architectural Expression

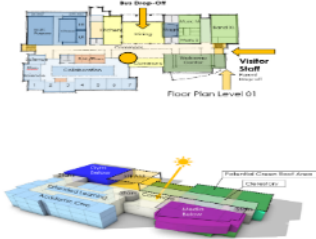


PAT Consensus
May 2020

CONCEPTUALIZE



EXPLORE



DEVELOP



REFINE



BHE Personality / Character



What makes BHE unique



Existing: Favorite/Least Favorite



Bunker Hill ES | Design Vision

Common Themes from PAT:

- Community Oriented / Sense of Closeness
- Embedded in Neighborhood
- Access to Outdoor Learning
- Student Centered / Inclusive
- Natural / Open / Trees / Woodsy
- Welcoming / Family / Friendly

Support Student/Community

PAT Mtg#1 Feedback: Educational Vision		
1. Describe how the building can help support both Student engagement and Community activities.		
FLEXIBILITY Larger and more flexible meeting, learning and work areas Spaces that fit evening programs, performances and community activities Ability to separate public spaces from learning community Spaces with room to work and store More Restrooms / Better access	LEARNING ENVIRONMENT Incorporate access to outdoor learning opportunities Library at center of instructional spaces Connected areas where students are secure to move about freely Spaces for special learning activities	PHYSICAL ENVIRONMENT Taking advantage of natural environment as an asset More Parking Use of Natural Lighting Welcoming Environment

21st Century Learning Environment

PAT Mtg#1 Feedback: Educational Vision		
2. Name three things that help create a modern 21 st Century Teaching & Learning environment that helps to support and foster a successful program.		
LEARNING ENVIRONMENT Technology: Access to / Use of / Adaptable Flexible collaborative spaces for teaching and learning (inviting classrooms) Practical and Interactive Features Equipment adequate for their need that encourage learning the process Library at center of instructional spaces Labs with real world application / environments for future skill sets Dedicated Gifted/Talented space	PHYSICAL ENVIRONMENT Ample Natural Light / Views to Exterior Safety Energy efficient / climate focused "Creative environment = Creative thought"	FLEXIBILITY Flexibility Forward Looking COMMUNITY Conducive for Parent Involvement Building Community

Teaching and Learning

PAT Mtg#1 Feedback: Educational Vision		
3. Describe how Teaching and Learning have changed at Bunker Hill Elementary since the 1950's.		
TEACHING STRATEGIES Collaborative Teaching and Learning Movement from Teacher focused to Student focused Movement from 3 R's to Thinking Skills More Hands on / Individualistic Instructional Approach Team Teaching Helping Students Help Themselves	TECHNOLOGY Ever-changing technology / growth of personal technology Information Availability Science Lab / Makerspace Advances COMMUNITY Safety and Security Demographic changes More diverse = Mobile student body	PHYSICAL ENVIRONMENT Classroom layouts / instructional areas use small and large group instruction "No longer Beaver Cleaver" type classrooms Outdoor / Indoor Dynamics

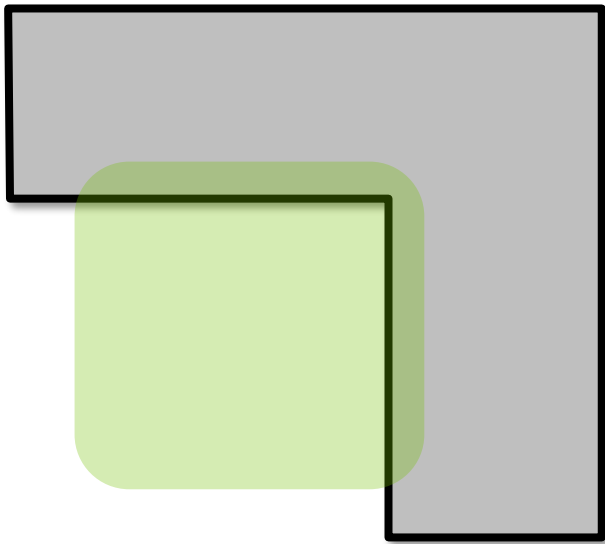
Bunker Hill ES | Educational Vision Common Themes from PAT:

- Library at Center of Instruction
- Natural Light / Views to Exterior
- Flexible / Collaborative Spaces
- Access to Outdoor Learning
- Safe Environment / Student Movement
- Student Focused / Build Thinking Skills

Bunker Hill ES | Guiding Principles Design Objectives from PAT:

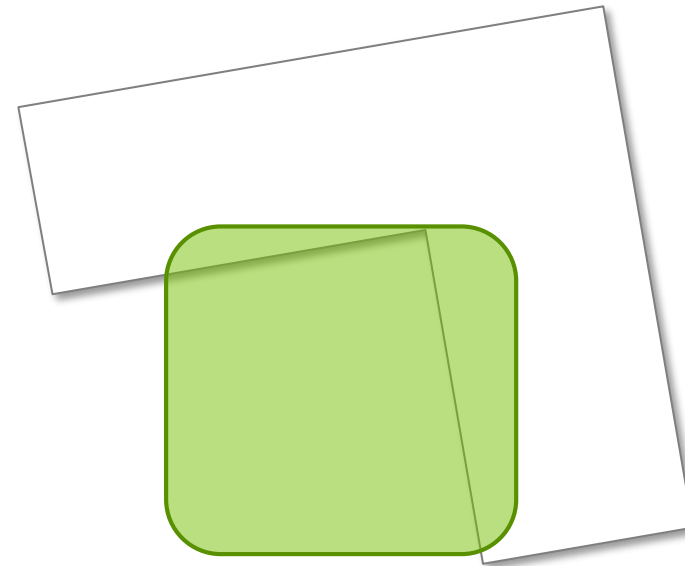
- 1. Open and Welcoming feeling.**
Inviting to and inclusive of the diverse community.
- 2. Embedded within Natural setting.**
Connected with views and access to walkable neighborhood.
- 3. Student centered and Parent involved.**
Celebrating excellence, achievement and tradition.
- 4. Flexible, Collaborative and Forward Thinking.**
Responsive to Teaching and Learning objectives over time.

ORTHOGONAL PLAN



Formal – Rigid - Predictable

ORGANIC PLAN



Natural - Relaxed – Free Flowing

Q1:

Does the proposed plan meet the objectives of the BHE Guiding Principles?

Meets Objectives

17

✓

Unanimous

Does Not Meet Objectives

0

Q2:

Preferred Concept for BHE

Orthogonal Plan

4

2

Hybrid Plan

5

6

Organic Plan

Consensus

PAT Voting Results (17 voters)
 Liked Elements of Both.... Leaning towards Organic

- 4 votes = Orthogonal Plan
- 6 votes = Organic Plan
- 7 votes = "Hybrid" Plan (5 Organic / 2 Orthogonal)

PAT Mtg #3: PAT Input / Engagement

ORTHOGONAL PLAN

ORGANIC PLAN

PAT Guiding Principles:

- Open and Welcoming feeling.**
Inviting to and inclusive of the diverse community.
- Embedded within Natural setting.**
Connected with views and access to walkable neighborhood.
- Student centered and Parent involved.**
Celebrating excellence, achievement and tradition.
- Flexible, Collaborative and Forward Thinking.**
Responsive to Teaching and Learning objectives over time.

Does the proposed plan meet the objectives of the BHE Guiding Principles?

Meets Objectives

Does Not Meet

Preferred Concept for BHE

Orthogonal Plan

Organic Plan

✓

Hybrid Plan

Learning Communities + Shared Spaces

ORTHOGONAL PLAN

ORGANIC PLAN

✓

Hybrid Plan

Art/Science Library Front Admin



Meeting Agenda:

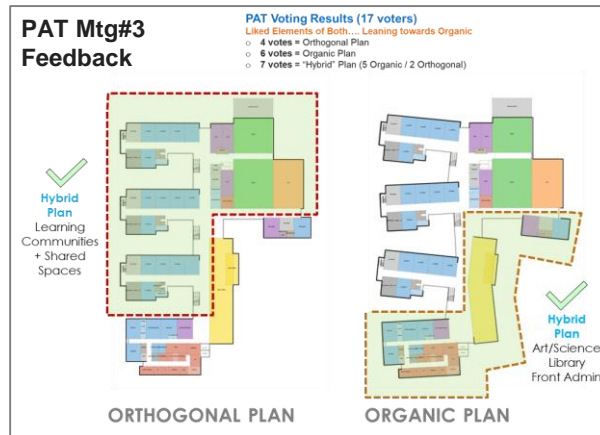
1. **PAT Process / PAT Mtg #1 thru Mtg #3 Recap**
PAT Charge
PAT Engagement Process Overview
PAT Design Vision + Educational Vision + Guiding Principles
PAT Mtg #3 Concept Layout Voting Results

NEW INFO

2. **PAT Mtg #4/5 Focus:** Review Current Status of BHE Design
PAT Information = Updated Plans based on PAT + SBISD Input
PAT Engagement = 3D Exterior Images + Individual Input*
* *Weblink to PAT Individual Input Survey*

3. **Next PAT = May 12th** (Virtual Mtg?)

PAT Information Update: Site Plan + Floor Plans



PAT Information UPDATE on BHE Design:

This portion of the PAT Mtg #4/5 is informational in nature, due to the fact we are not able to present and discuss as a group.

Since our last PAT Mtg, we have been working with SBISD to continue the development of the design.

The following slides in this section provides the PAT with the current Site + Floor Plans for the new Bunker Hill ES.

Site Plan Update:

There was consensus from the PAT on the Site Plan layout at our PAT Mtg #3; therefore, only a few changes have been made based on our feedback sessions with SBISD.

Floor Plan Update:

We have incorporated the PAT Feedback from PAT Mtg #3 to create a “hybrid” floor plan.

- The “orthogonal” elements of the floor plan are in the Learning Communities and the Dining + Gym spaces.
- The “organic” elements are along the perimeter edge and embrace the front area of the site for the Library, Art and Science spaces with access to outdoor learning.

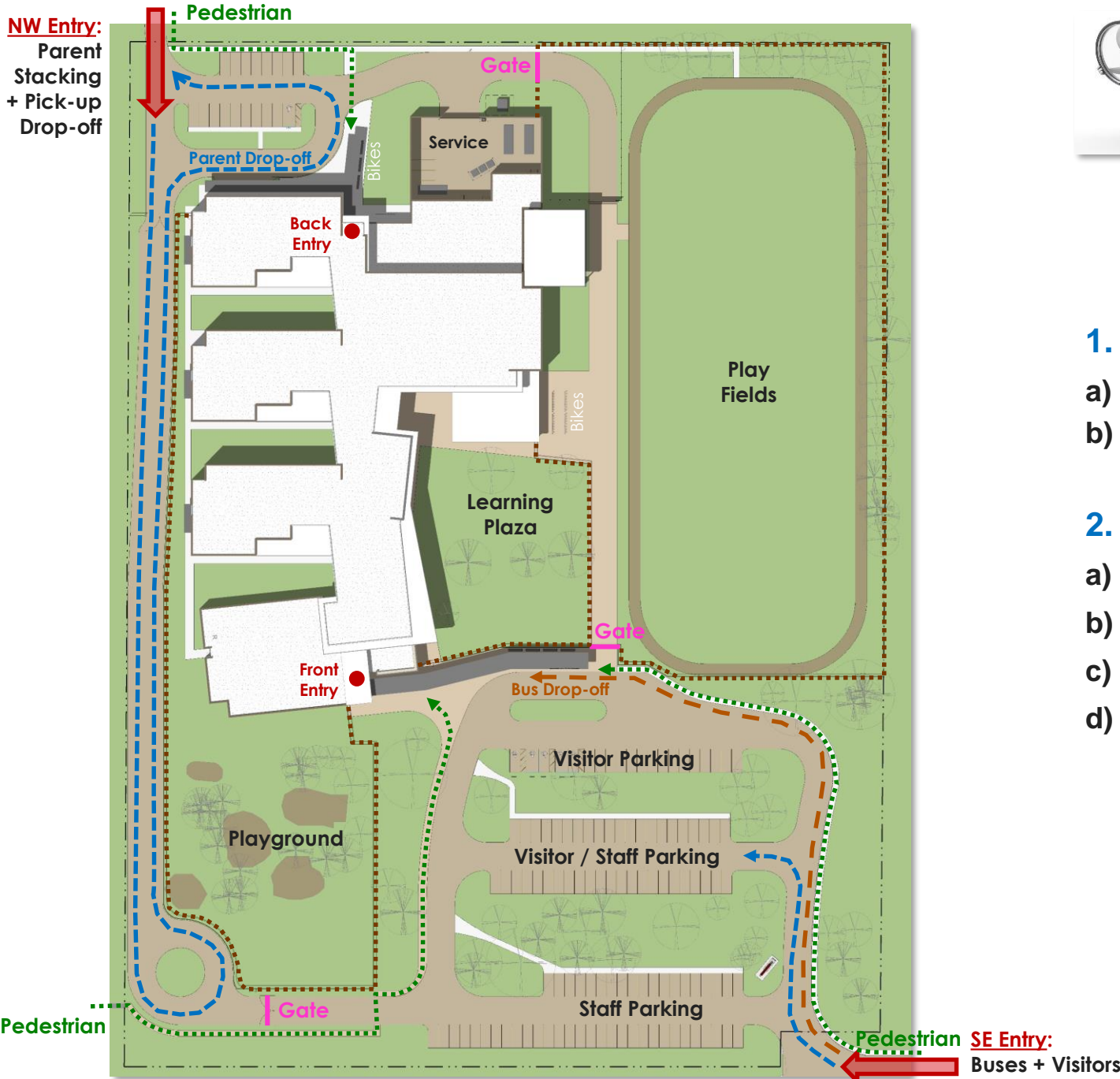
Site Plan

Floor Plans



Update on Plans

NW Entry:
Parent
Stacking
+ Pick-up
Drop-off



Bunker Hill ES Design Development

UPDATE: Site Plan Elements

1. Perimeter Boundary / Security

- a) **Site** (Fencing + Gates)
- b) **Building** (Main Front Entry, Back Secondary Entry)

2. Traffic Flow

- a) **Pedestrian Walks** (3 points of entry)
- b) **Parent Drive/Drop-off** (NW corner from neighborhood)
- c) **Bus Drive/Drop-off** (SE corner from Taylorcrest)
- d) **Visitor Entry** (SE corner from Taylorcrest)



- a) Main Entry + Administration** (Identifiable, 1-Story)
- b) Learning Communities** (2-story Classroom Wings)
- c) Shared Spaces** (Library, Dining, Gym, Specials)

4. Outdoor Spaces

- a) **Learning Community Courtyards** (Intimate, Protected)
- b) **Learning Plaza** (Educational Patio, Trees, Green Space)
- c) **Outdoor Play** (Gym, Covered Play, Fields, Fitness Zone)
- d) **Playground** (Secure area near front)

Preliminary Exterior 3D Views

Building Shape / Forms + Exterior Finish Materials shown in the following 3D images communicate the proposed exterior expression of the new BHE design.

You will see how the proposed exterior building materials help create a new facility that compliments and fits into the surrounding neighborhood context.

Brick colors allow the building to blend into a natural park like campus setting.

Wood under the canopy and overhangs with the slender columns evoke the image of trees.

Use of glass provides views and reflects the trees and sky.

The organic shape of the Library embraces the Learning Plaza anchored by the Art + Science.

Decisions made and direction set from PAT Mtgs #1 thru #3 together influenced the Exterior Development of the Design you are about to see in the next group of slides.



PAT Input: 3D Exterior Views – Seeking PAT Feedback

PAT Individual Feedback:

Web Survey link: <https://bit.ly/2V9wzPH>

*Use the **web link** above
or **QR code** to the right
to access the Web Survey
to **provide your individual
feedback.***

**Please provide your feedback
before end of day April 27th**



We are not able to meet as a group to present and discuss the development of the new BHE Design.

The Feedback from the PAT is valuable to the continued refinement of the design; therefore, we have compiled the following slides to communicate the design concept and are seeking your individual feedback via “Microsoft Forms” weblink.

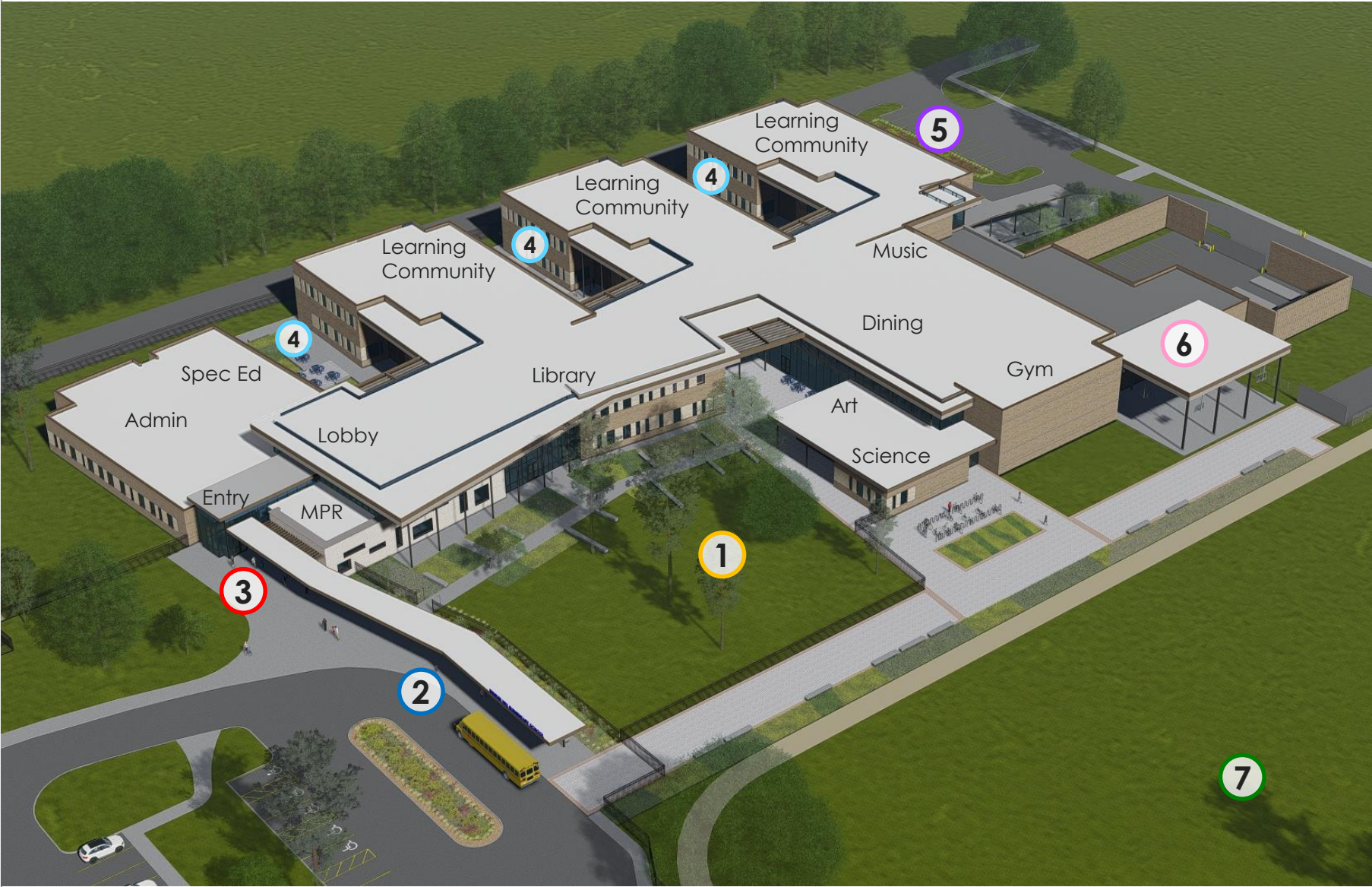
Please review the rendering images and submit your “Individual Response” to the survey questions.

Provide your feedback for the 3D Exterior Views and if you support the direction the design development is going.

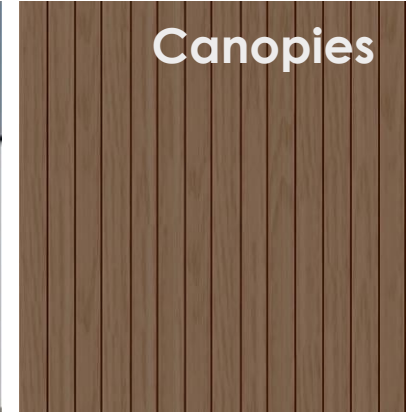
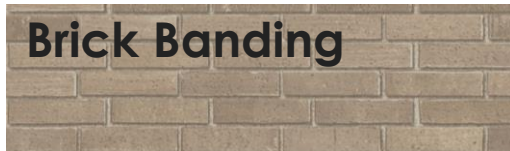
Bunker Hill ES Design
Preliminary Exterior Design

3D Axonometric View Legend

- 1** Learning Plaza
- 2** Bus Drop Off
- 3** Main Entrance
- 4** Courtyards
- 5** Parent Drop Off
- 6** Covered Play
- 7** Playfields



Preliminary Exterior Material Selection



The proposed exterior building materials being recommended have been selected based on feedback and direction set by the PAT Committee Mtgs #1 thru Mtg #3:

- The **brick and stone masonry** are durable and long-lasting materials, their natural tones blend into the surrounding community context.
- The **masonry** has a slight variation range in color blend that feels more organic and natural to the Bunker Hill campus setting.
- The **canopy soffit** introduces a wood finish to the palette of materials to create a natural warm feeling for the underside of canopies.
- The **glazing** has a slight “greenish- blue” tint that reflects the natural sky and vegetation in the Bunker Hill campus. The bronze **window frames** are a natural compliment to the color palette.

Bunker Hill ES Design

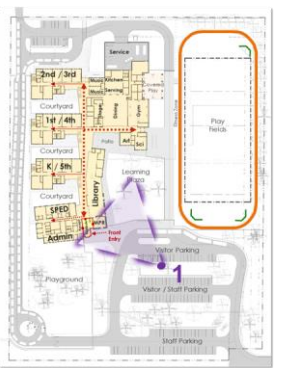
Preliminary 3D Exterior Views

1 View of Front of School

Students, Staff and Visitors will approach the school has a similar feeling as the context of the wooded neighborhood.

The design images shown have been developed based on PAT Committee input and feedback:

- **Scale/Height** of front entry blends with the **neighborhood** context.
- Glass entry vestibule at **front entry** is clearly defined extending an **inviting welcome** to visitors.
- Site design maintains a **park like setting** by preserving the **existing trees** that will be a feature of the Learning Plaza that embraces the new building.



Bunker Hill ES Design

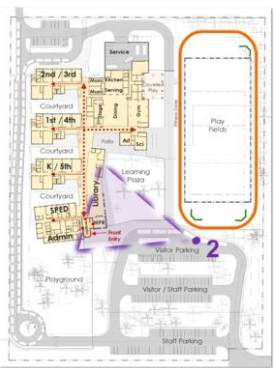
Preliminary 3D Exterior Views

- 2
- ### View from Bus Drop-off

The canopy wood tone soffit provides cover from the elements as you approach the building entry along the path adjacent to the Learning Plaza and Library.

The design images shown have been developed based on PAT Committee input and feedback:

 - The **building height** steps up in scale from the 1-story front entry to the 2-story portion set back from the main pedestrian path.
 - The new school has a parklike setting with open **green space and landscape** in Learning Plaza.



Bunker Hill ES Design

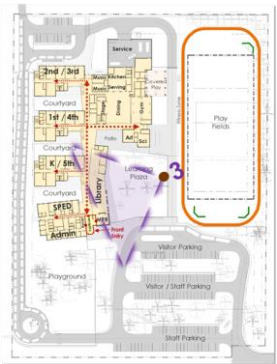
Preliminary 3D Exterior Views

3 View of East Bldg. Facade

This view we are inside the Learning Plaza looking back towards the Library + Front entry.

The design images shown have been developed based on PAT Committee input and feedback:

- The use of materials and window design of the Library sets it apart from the other building portions. The **Library** is the **academic heart** and central **architectural feature**.
- The **Learning Plaza** has a mix of hardscape paths and seating in the natural park setting providing **opportunities for outdoor learning**.



Bunker Hill ES Design

Preliminary 3D Exterior Views

4 View of Learning Plaza

The outdoor patio is nestled between the Art/Science building and Library with visual connection to Dining Commons + Flex space.

The design images shown have been developed based on PAT Committee input and feedback:

- The large patio area provides an area for **outdoor learning** and **outdoor dining** space for **parents** when they visit their **children** and **community** activities on the campus.
- The canopy **filters sunlight** through the baffles similarly to how light would be diffused through a tree canopy and provides **covered shade** for **outdoor learning** activities.



Bunker Hill ES Design

Preliminary 3D Exterior Views

5 View at Gym Entrance

The Art/Science building in the center of this view is embraced by the Library on the left and the Gym on the right.

The design images shown have been developed based on PAT Committee input and feedback:

- **Art and Science** has its own **dedicated outdoor patio** area with direct access to Learning Plaza.
- The students have direct access to the **Covered Play** from the **Gym**. There is an **extended activity zone** for bicycle racks, fitness and recreation activities.



Bunker Hill ES Design

Preliminary 3D Exterior Views

6 View at Parent Drop-off
Parent drivers enter the site and queue in the stacking lane campus connector drive with drop-off zone along the canopy leading to the building entry.

The design images shown have been developed based on PAT Committee input and feedback:

- The **parent drop-off entrance** has smaller **entry plaza** and **landscaping** elements like the front entry.
- Each 2-story wing has a sidewalk to **classroom courtyards** and the **playground** at the front all within a **secure perimeter fence**.



Bunker Hill ES Design

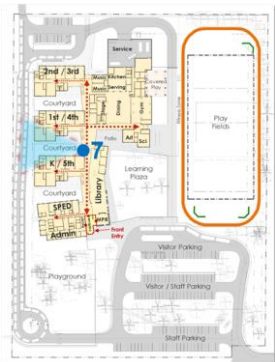
Preliminary 3D Exterior Views

7 View at Courtyard

This view is from within the Learning Community courtyard looking eastward from just outside the main circulation spine.

The design images shown have been developed based on PAT Committee input and feedback:

- Covered **outdoor learning** area can house multiple groups for **individual study + collaboration**.
- The **courtyards** have a combination of hardscape and landscape supporting a **variety of activities** (learning, socializing, connecting with nature).
- The windows provide **natural daylight** to the **classrooms** from the north and south side of the building.



The preliminary 3D views presented communicates the new BHE exterior design concept: The Bunker Hill ES design creates a welcoming and inviting approach to the school set in a familiar wooded neighborhood. The exterior design incorporates building shapes and color tones reflecting the surrounding natural environment resulting in an engaging 21st century learning environment.



**Thank you to the PAT Committee team members for your engagement!
Your input and feedback has led us to this wonderful proposed design for the new Bunker Hill Elementary School.**



Please don't forget to
provide your feedback
before end of day April 27th

PAT Individual Feedback:

Web Survey link: <https://bit.ly/2V9wzPH>

Use the web link below or
QR code to access the
Survey to provide your
individual feedback.



Meeting Agenda:

1. **PAT Process / PAT Mtg #1 thru Mtg #3 Recap**
PAT Charge
PAT Engagement Process Overview
PAT Design Vision + Educational Vision + Guiding Principles
PAT Mtg #3 Concept Layout Voting Results
2. **PAT Mtg #4/5 Focus:** Review Current Status of BHE Design
PAT Information = Updated Plans based on PAT + SBISD Input
PAT Engagement = 3D Exterior Images + Individual Input*
* *Weblink to PAT Individual Input Survey*

NEXT STEP



3. **Next PAT = May 12th** (Virtual Mtg?)