



DULL OLSON WEEKES
architects
319SW Washington St. #200
Portland, Or. 97204
t 503.226.6950
f 503.273.9192
www.dowa.com

BETHANY ELEMENTARY SCHOOL REMODEL

BEAVERTON SCHOOL DISTRICT #48
16550 SW MERLO ROAD, BEAVERTON, OREGON 97006

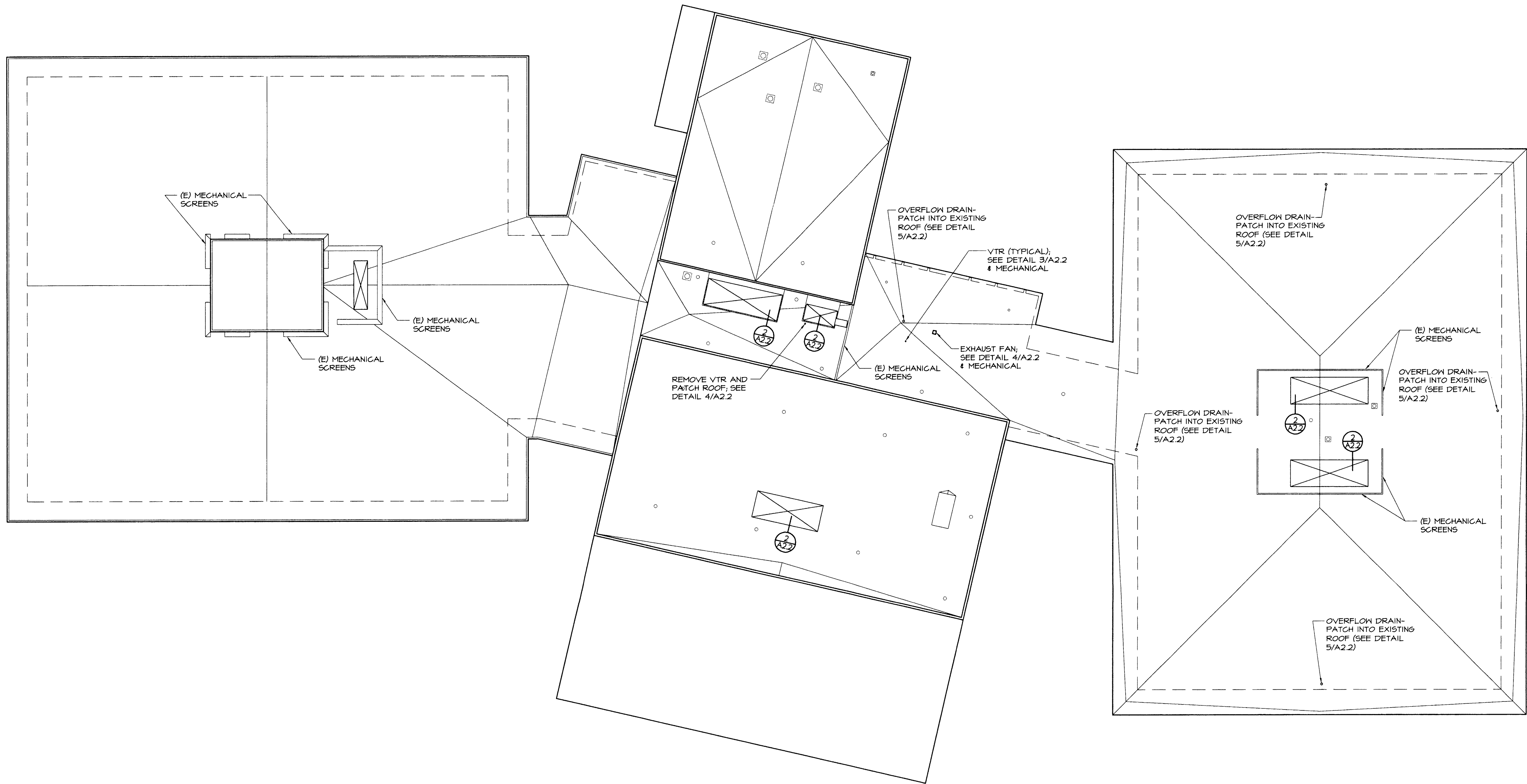


Key Plan

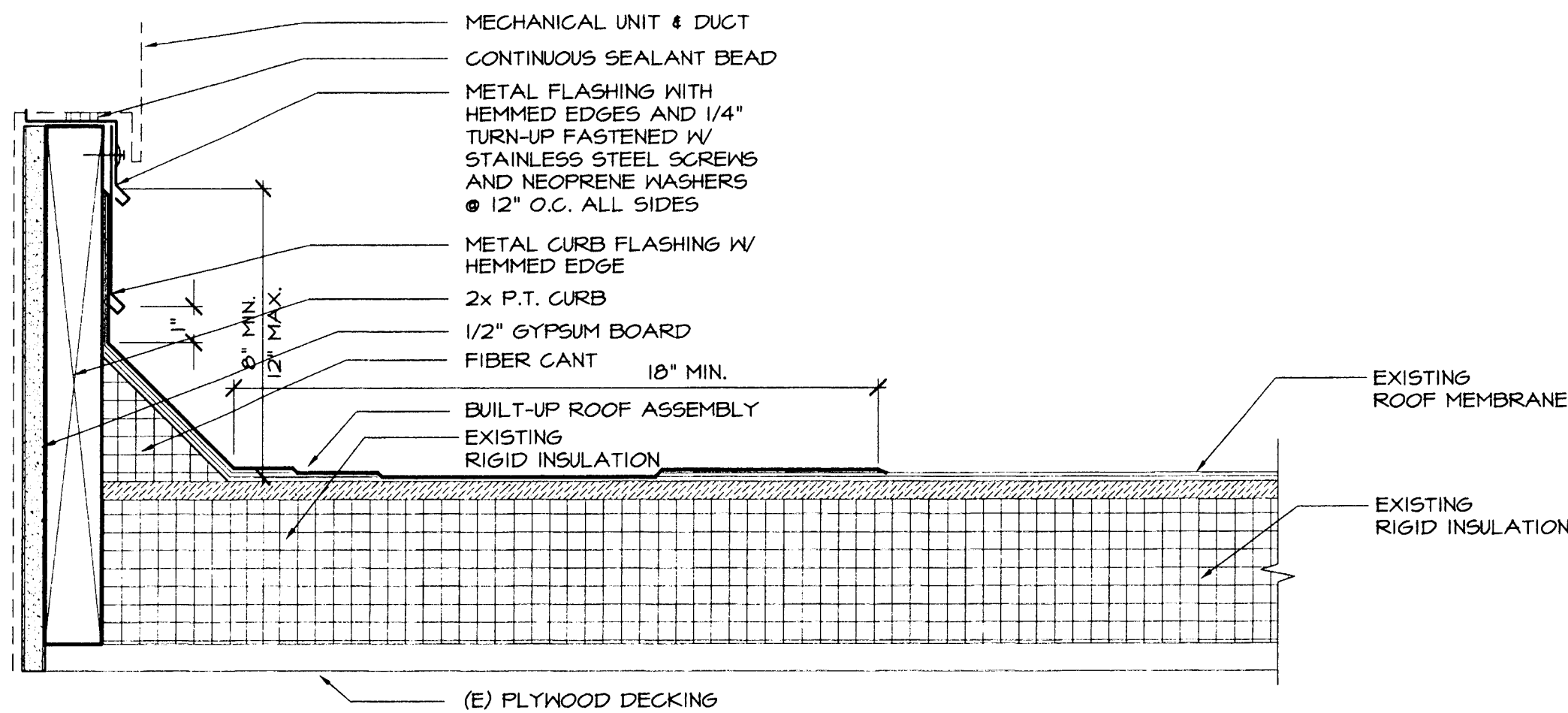
PERMIT SET
Date: JANUARY 27, 2003
Revisions:
Project #: 02051

ROOF PLAN &
DETAILS

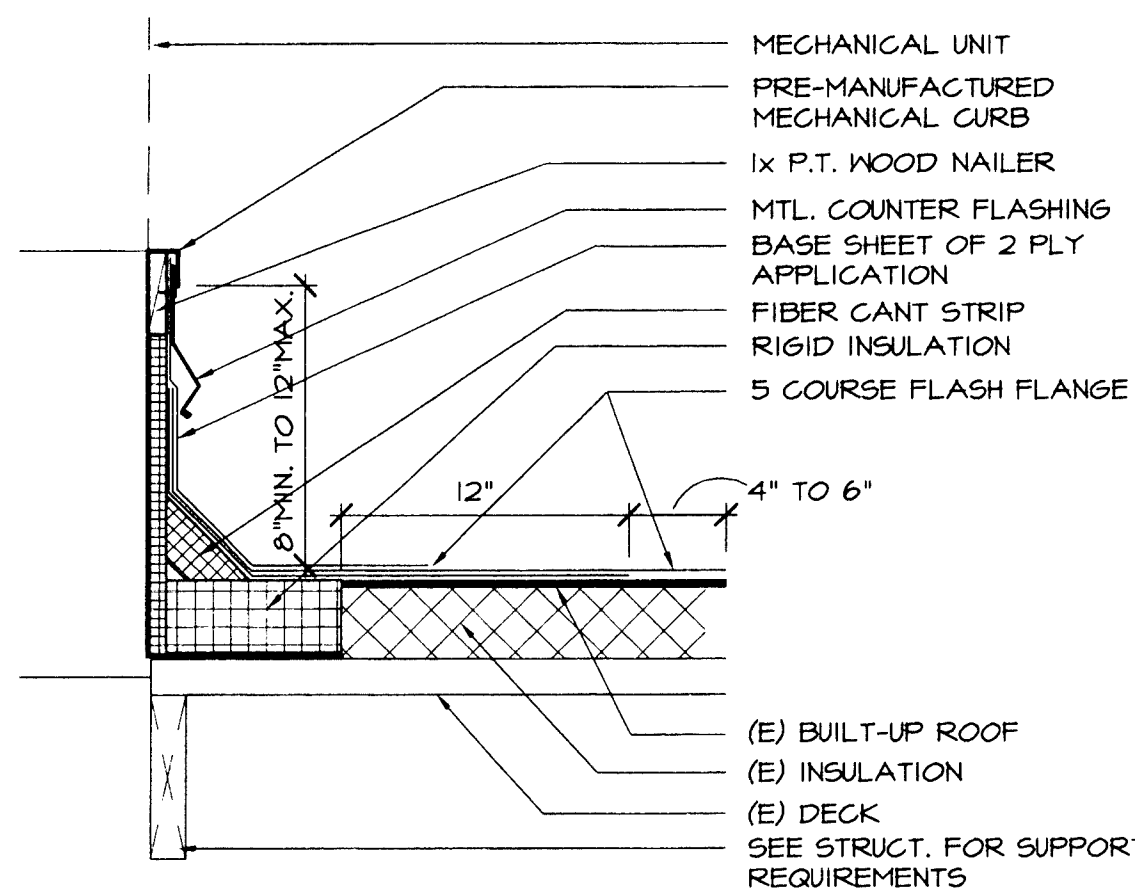
A2.2



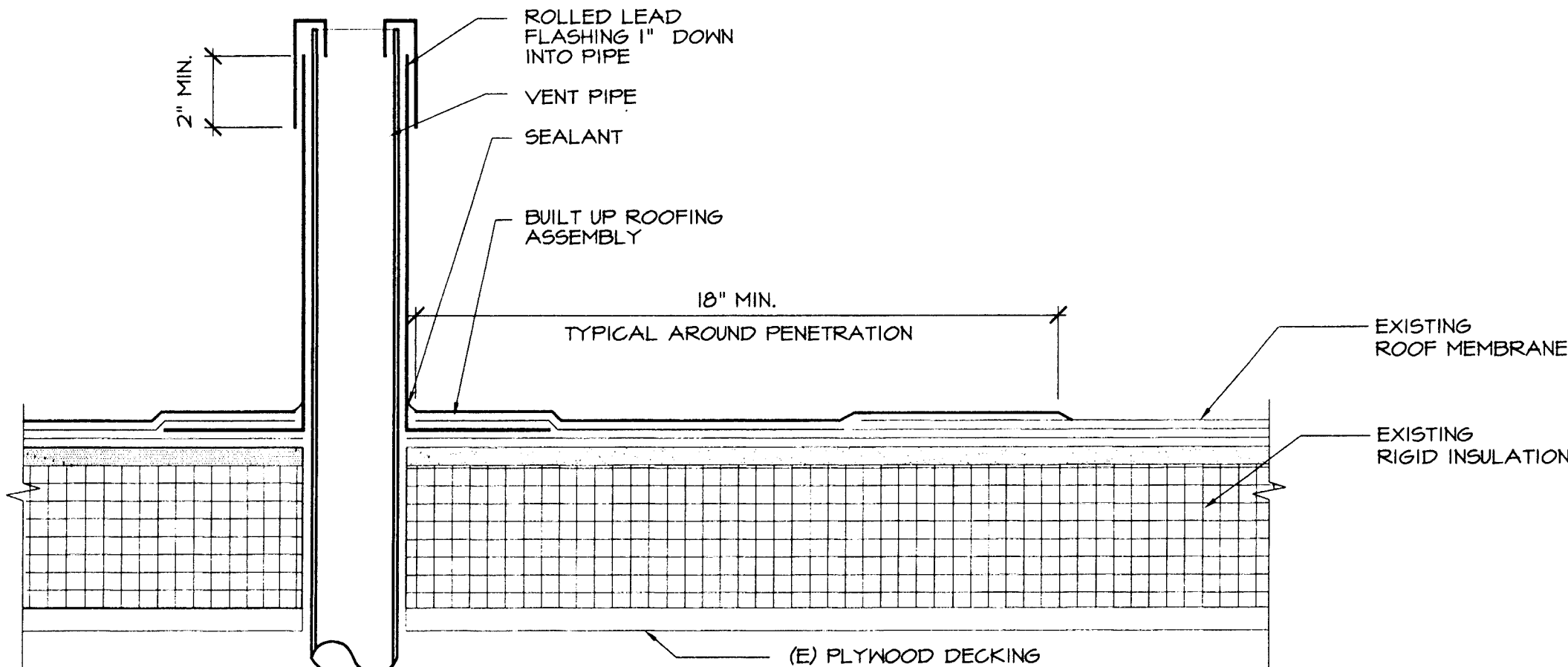
1
A2.2
ROOF PLAN
SCALE: 1/16"=1'-0"



2
A2.2
TYP. CURB DETAIL
SCALE: 3" = 1'-0"

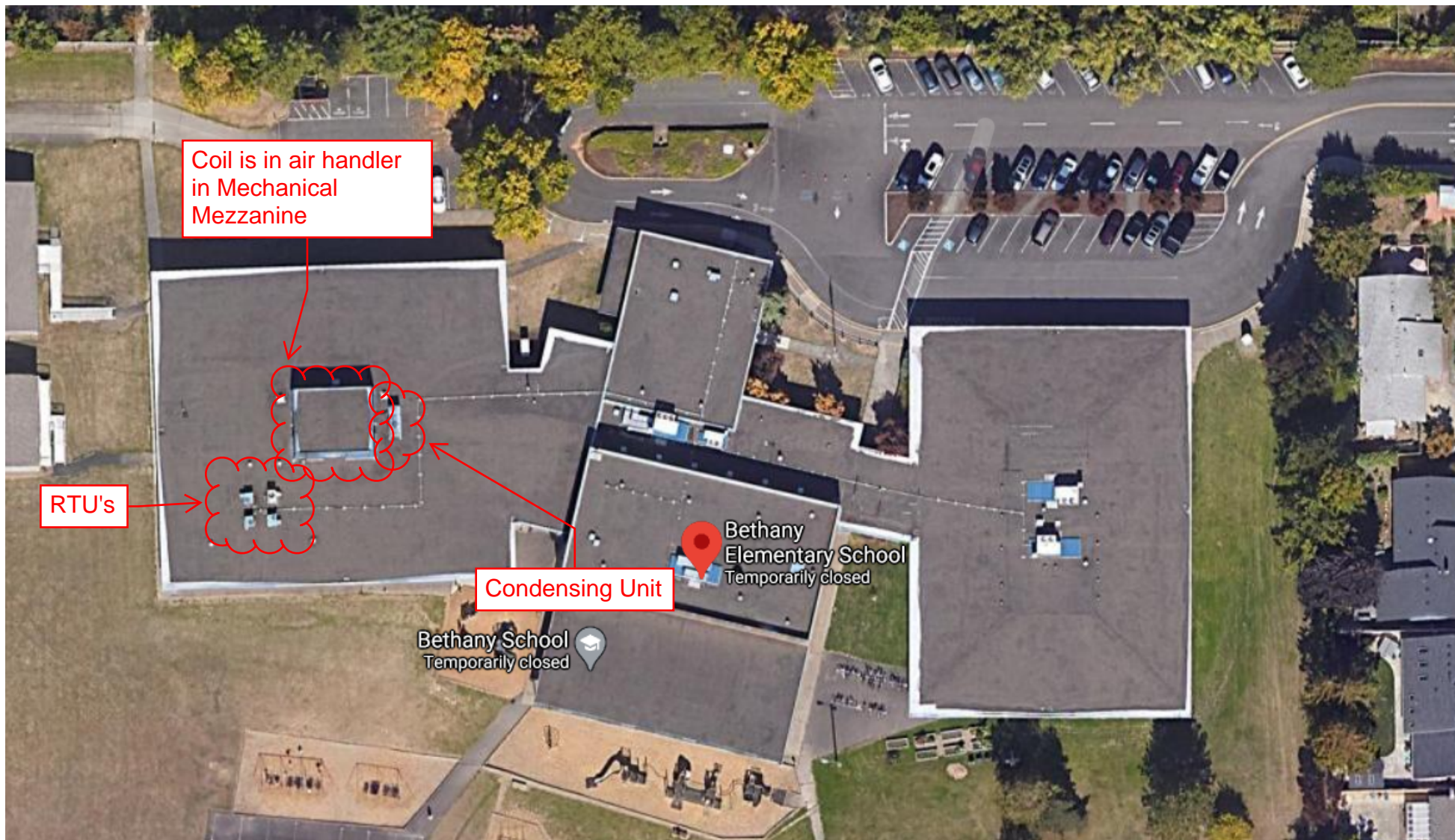


4
A2.2
EF CURB DETAIL
SCALE: 1 1/2"=1'-0"



3
A2.2
TYP. VTR @ BUILT-UP
SCALE: 3" = 1'-0"

5
A2.2
TYP. OVERFLOW DRAIN DTL.
SCALE: 3" = 1'-0"



Coil is in air handler
in Mechanical
Mezzanine

RTU's

Condensing Unit

Bethany
Elementary School
Temporarily closed

Bethany School
Temporarily closed