

Marion L. Steele High School Restart Guidelines - Fall 2020

In accordance with the restart guidelines established by the Amherst Exempted Village School District, Marion L. Steele High School has developed the following procedures for the 2020-2021 school year. These procedures are intended to minimize and mitigate the risk while providing a safe learning environment for all students and staff. All procedures are subject to change as health alerts and the health of students and staff change.

MLS Master Schedule:

For the 2020 - 2021 school year, Steele High School will run on a trimester schedule with every student taking six classes for the year. Students will only have two classes per trimester. Each class will be 2.5 hours a day.

| Dates | Classes | Daily Schedule | |
|-------------------------|--------------------|----------------|---|
| August 27 - November 17 | 1st and 2nd period | 7:35 - 7:45 | Staggered Arrival |
| November 18 - March 1 | 3rd and 4th period | 7:45 - 10:30 | First Class (SNL will air from 9:20 - 9:30) |
| March 2 - May 27 | 5th and 6th period | 10:35 - 2:00 | Second Class (Includes lunch and a break) |
| | | 2:00 | Staggered Dismissal (Busses will depart at 2:45) |

Bus riders and any student who does not have a ride at dismissal will wait until 2:45 in the cafetorium.

Extended Campus (eCampus):

Families opting into the eCampus option can expect a robust learning experience. Teachers will interact with students via Google Hangouts at specific times during the day. Students will have the same level of engagement and accountability as onCampus classes and will be required to log in at specific times during the day to attend class. Daily attendance policies and procedures apply to eCampus students. All eCampus classes will follow the same grading as onCampus classes. Courses offered via eCampus will be determined based by the students who sign up for this option. Not all courses offered in the MLS Program of Studies will be offered via eCampus.

Face Coverings:

Students will be required to have masks, buffs, or face shields that wrap around the face, cover the nose and mouth completely, and extend below the chin available for the school day where social distancing cannot be guaranteed. Teachers will build time into their schedules for students to have breaks from wearing face coverings when and where it is safe to do so. Disposable face coverings will be provided for emergency situations when a student forgets to bring one to school or on the bus.

Student Arrival:

- Staggered arrival will begin at 7:35 am. More details will be released in August.
- Upon entering the building, students will have the opportunity to use hand sanitizer and report directly to their first class.
- Students should not congregate outside the building before the doors open. Student drivers should remain in their vehicle until the doors open.

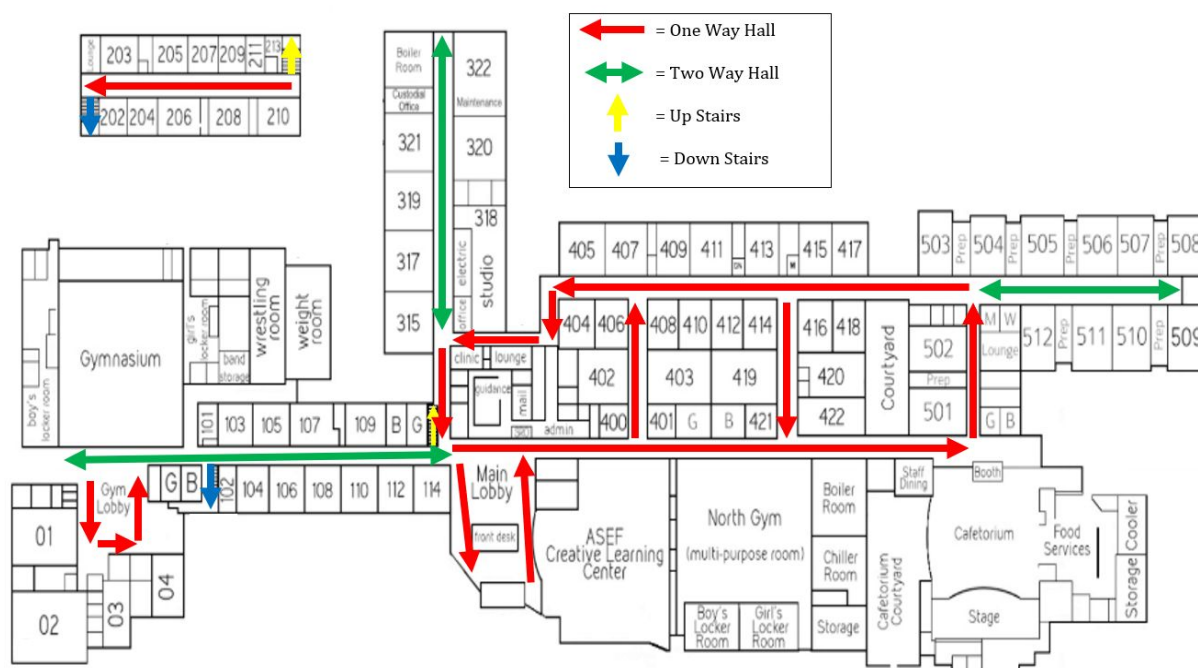
- Students will only be permitted to enter the building through the front doors, south lot doors, or the cafetorium courtyard doors.

Breakfast:

- The cafetorium doors will open at 7:35 am only for students who are purchasing breakfast.
- Breakfast for purchase will be picked up and eaten in the classroom.

Hallways:

- Students should not congregate in large groups and should maintain social distance as much as possible while transitioning in the halls.
- Lockers will not be issued and no food or drink should be consumed in the halls.
- An established traffic flow for the whole building with designated up and down stairs will be followed.
- Students should stay to the right in halls with two-way traffic. Directional arrows and signage will be utilized throughout the building.



Classrooms:

- Upon entry into a classroom, students will be required to sanitize their hands.
- Students will have assigned seats for the entire trimester.
- Student work areas will be spaced out as much as possible throughout the classroom.
- Students will not share materials.
- Students will clean their work area before leaving the classroom.
- Upon exiting the classroom, students will be required to sanitize their hands.

Restrooms:

- Students should not congregate in the restrooms and adhere to the social distancing markers on the floor to ensure proper spacing.
- During these times, all students will be required to wash their hands.
- Paper towel dispensers have been installed in all restrooms.
- Restrooms will be intermittently cleaning and disinfecting throughout the day.

Lunch:

- Students purchasing food items will eat in the cafetorium.
- Students who pack lunch will eat in the North Gym.
- Each location will have designated in and out doors and an established traffic flow for the room.
- Students must sit at a distance and the number of students at each table will be limited.
- Proper distance will be marked at each table.
- Students will wash and/or sanitize hands before and after lunch.

Common Areas:

- Students will not be allowed to congregate in common areas such as lobbies or hallways during the school day. Students should not congregate in parking lots before or after school.

Visitors:

- No visitors will be permitted in the building during the school day.
- Should a parent/guardian need to drop off an item for their child, he/she will place the item in a bin in the vestibule and MLS staff will contact the child to pick up the item during a class break.
- If a parent/guardian is signing a student out of school early, they will do so electronically in the vestibule.

Tardy and/or Early Release:

- If a student is tardy, the student will enter the front doors and sign-in electronically in the vestibule.
- If a student is leaving school early, the adult will have to show an ID and sign out the student electronically in the vestibule.
- If a student driver is leaving school early, a parent/guardian must provide permission in advance by calling the attendance line at (440) 988- 1404. Once the release is verified by the attendance secretary, the student will sign out electronically.

Late Arrival and Early Release Privileges:

- Late Arrival/Early Release privilege will be available to any junior or senior who has an opening in his/her trimester schedule.
- Students must complete the appropriate application. More information on Late Arrival/Early Release may be found in the MLS Student and Parent Handbook.

Dismissal:

- Staggered dismissal will begin at 2:00 pm. More details will be released in August.
- Students must exit the building immediately upon dismissal and should avoid congregating in large groups outside after dismissal.
- Bus riders and any student who does not have a ride at dismissal will wait for 2:45 pm in the cafetorium.

Other Safety Procedures:

- A room separate from the school clinic has been designated for students or staff who begin to show symptoms or have a temperature above 100°F while at school.
- Opportunities for handwashing will be provided to students throughout the day.
- Hand sanitizer will be available in high-traffic areas and students will be encouraged to sanitize hands.
- High-touch surfaces will be cleaned frequently throughout the day.
- Students are encouraged to bring their own water bottles as drinking directly from fountains will be closed. Refilling personal water bottles at touchless stations, if available, will be allowed.