

Reopening of Schools Special Board Meeting Version 2.0

July 21, 2020

Superintendent's Message

We have to respect the power of this virus, the escalating exposure data, and the concerns from our employees and families to find a safe way back into the classroom. It is heartbreaking for all of us to not be able to bring the students back to in-person education at the start of the school year. With the community's help in stopping the spread of COVID-19, at any time we are ready to quickly adjust back to in-person school.

Our Values and Beliefs...

- Equity and inclusion for all students
- All students can learn and achieve
- Personal responsibility for one's own learning is essential for lifelong success
- Parents and community engagement and partnership is essential
- Each staff member has a role in student well-being and success



Our Educational Engagement Process

Planning Teams

- Launched worldwide and nationwide inquiry and research on educational models
- Created an engagement process that included representatives from each school site, labor groups, and parents

Community Forums

- Conducted 7 forums
- Addressed questions submitted in email, survey, and social media
- Direct communication with parents, students, and staff

Focus Groups

- Conducted multiple discovery sessions with teachers, students, parents, support staff, school and district leaders
- Gathered and thoughtfully discussed input
- Honored voices and recognized contributions



District Student & Family Survey

- Generated input in May, June, and July
- Used information to plan forward
- Most schools conducted parent meetings

Labor Groups

- Regularly met
- Generated input
- Valued opinions
- Recognized needs
- Collaborated on multiple plans

Faculty & Staff Surveys

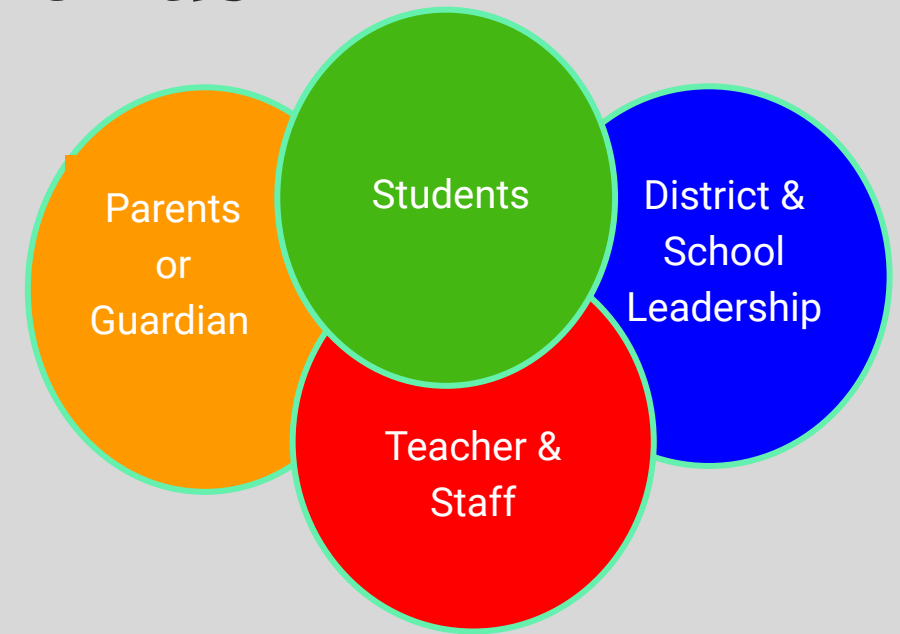
- Generated input in May, June, and July
- Used information for planning and decision making
- Communicated results with key stakeholders

Our Process

- Generated feedback from various stakeholder groups by surveys, committees, Zoom meetings, social media, 1:1 parent meetings, and community forums
- Established Planning Teams: Health & Safety, Educational Services & Instructional Planning, and Budget Committee
- Communicated updates at Governing Board meetings, Community Forums, social media, press release, website updates, and internal and external district wide emails

Our Feedback Trends

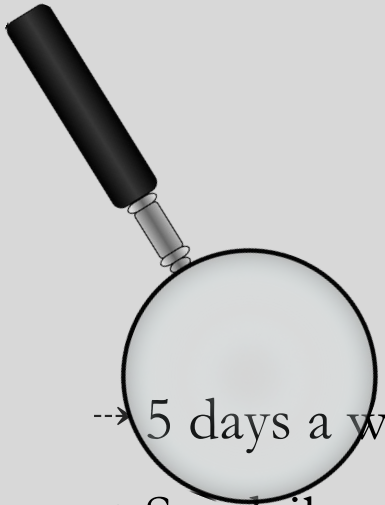
- Health and safety is a must
- High quality, daily, live instruction by teachers
- Rigorous and relevant instruction
- Clear expectations for students, teachers, and parents
- Progress monitoring
- Pro/Con academic letter grading A-F
- Equitable access to engaging curriculum
- Equitable access to reliable internet and technology
- Common learning platform and expectations
- Special Education needs and expectations for ongoing engagement and learning support
- Meeting the needs of English Language Learners
- Mental health and wellness for students and staff
- Importance of social emotional learning and support for all
- Frequent feedback and opportunity to engage with teachers, parents, and leaders



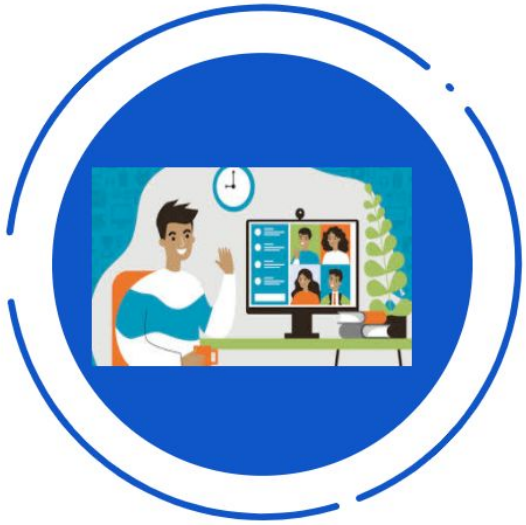
At a Glance: Virtual Learning Model

Virtual Learning
(for ALL students)

- 5 days a week; combination of live, virtual instruction and independent learning
- Set daily school bell schedule for consistency in start and end times
- Student progress monitoring, feedback, assessment and grading
- Curriculum and instruction standards
- Standards-based, rigorous learning
- Small and whole group instruction
- Connection and communication with teachers, peers, and parents
- Social-emotional learning supports



Daily Live Teaching



Teaching and learning will take place daily with students following their individual class schedule.

- first day of school is Thursday, August 13, 2020.
- school bell schedules may slightly vary
- student class schedules will be provided in the coming weeks
- information on school planning will be regularly updated by the school administration



Students will receive instructional minutes as required by the California Department of Education. Minutes of instruction will vary by grade level and will be a combination of live teaching and independent learning.

- Kindergarten: 180 minutes
- 1st-3rd: 230 minutes
- 4th - 12th: 240 minutes
- daily live instruction is provided
- independent student learning to extend learning concepts
- tutorial and office hours for students and parents is provided



Teacher's direct, guided, or facilitated instruction will vary by grade level and curriculum/lesson design.

- Elementary school day for students will begin at 8:30 am.
- Middle School day for students will tentatively begin between 8:30 am or 9:30 am.
- High School day for students will tentatively begin at 9 am.

More Information Soon

- School orientation days will be announced soon which will include plans to pick up devices, books, and other learning material.
- Professional development scheduled soon
- Start-up days for teachers and classified instructional staff devoted to reopening in a virtual environment

attendance **MATTERS**

- Daily attendance will be recorded in Aeries by the teacher.
- Absences will be monitored and will go against the chronic absenteeism rate.
- Students that are not actively attending class will be identified and will be contacted for support to re-engagement to school
- Parents will be notified if their child is absent from class.

Virtual Attendance

Accountability: We will be working with the District Attorney to work within the new Truancy guidelines as they are released. Until then we will be following the current Truancy processes with some adjustments to account for Distance learning.

Community Referrals: Community members will be able to report suspected truancy to the school sites.

Interventions: Attendance clerks, CARE, Attendance supervisors, SROs, along with other classified staff will be making calls, home visits and connecting with families.

Incentives: Student Services will work with sites to finalize incentives and plans for student engagement.

MTSS	ELA/ELD	Math	Social Science	Science
Tier 1 Program	K-5 Wonders 6-12 Study Sync	K-5 Investigations 6-12 CPM	K-5 My World 6-8 TCI 9-12 Pearson	K-5 Twig 6-8 HMH 9-12 Piloting
Digital Tools within Program	Yes Yes	Yes Yes	Yes Yes Yes	Yes Yes Yes
Assess-ment	Program Assess. MAP, F&P Lexia Placement	Program Assess. MAP	Program Assess.	Program Assess. MAP
Tier 2 Individual Support	Lexia Power-Up Study Island	Prodigy Khan Academy Study Island	Study Island	Study Island
Tier 3 Intensive Literacy Supports	Leveled Literacy Intervention System 44 Read 180 Individual Plans			

Curriculum & Instruction

Teacher's will plan and create lessons that can adapt to distance learning using core materials

Core subject areas include ELA/ELD, Math, Social Science and Science.

Areas of emphasis include daily instruction in core area essential standards with assessment of learning loss supported by differentiated supports to catch up. Top priority is early literacy.

Teachers may use a variety of supplemental academic digital tools.



Supplementary digital academic tools include: Lexia, Power-Up, Study Island, Prodigy, Khan Academy, System 44 and Read 180

Study Island has content in all core areas in both English and Spanish and student level is informed by MAP test results.

Educational Tools

- Zoom or Google Hangouts for live video instruction, recording of lesson and transcript of lessons.

→ Google Classroom for organization of assignments, files, projects, collaboration with peer and teacher, submission of selected assignments

→ Seesaw portfolio for primary grades

- Digital curriculum and textbooks available for core subject areas.



EL Education

Culturally Relevant

Differentiated

Data-Driven



- Establish the two-way lines of communication with parents and educators.
- Teaming up with parents to ensure their children read, speak, write and listen in some form every day. We plan to offer PD in the fall and continue with Project to Inspire.
- Guide and monitor implementation of remote learning to ensure equitable access for ELs for coherent instruction and learning.
- ELlevation platform to help determine levels and gather past test data. Small group instruction.
- Provide ongoing PD for teachers.

Training on EL Supports (offered during Spring and is ongoing)

Safety First

Evaluate each student on
an individual basis to
begin in-person services
as soon as safety permits



Social-emotional
curriculum
Resiliency curriculum
Academic
interventions in all
curricular areas

Specialized
curriculum for
students with
more significant
needs

Special Education

- Live instruction daily
- Meaningful engagement and assessment for learning
- Engagement tracking
- Goal progress Monitoring
- IEP amendments in first few weeks of opening
- In-person assessments when required
- Tiered re-engagement for those not attending sessions
- Meaningful and robust lessons
- Supplemental online curriculum
- Professional development for teachers, staff and parents

What's next from District & School?

What can the parents/staff expect from us?

- Employee forums scheduled for next week
- Regular forums scheduled with parents to provide updated information
- Periodic parent satisfaction surveys

