

WE ARE

GREATER TOGETHER

A PURPOSEFUL START TO THE
2020-2021 SCHOOL YEAR



GREATER ATLANTA CHRISTIAN SCHOOL

GETTING READY FOR SCHOOL

As the school year continues to take shape in new ways, I'm hopeful and excited for GAC students and families. We're ready to see each other again and welcome new families on the GAC campus. We are in a season that continues to change rapidly, yet we remain committed to providing your children with the very best in learning, support, engagement and preparation for the future.

As you review the following plan to welcome you safely to campus, you will see GAC has worked to adapt to student and learning needs in transformative ways - as well as carefully planned to ensure the health and safety of every member of our community incorporating the best practices and protocols. At the same time, I want to assure you that GAC has not changed in its foundation or focus. Scripture calls us to ***"be anxious for nothing, but in everything with prayer and supplication, with thanksgiving, let your requests be known to God; and the peace of God, which surpasses all understanding, will guard your hearts and minds through Christ Jesus."*** *Philippians 4:6-7*



I am thankful for all the work that has gone into preparing for this school year. I'm thankful for our team of educators that embraced the synchronous learning concept and brought it to life with help from administrators, campus services and IT professionals. I'm thankful we were able to invest over \$1.4M in those new technologies, resources, and health protections to advance our commitment to transformative learning, on campus and from home. I'm thankful for friends who in early 2020 supported our dream to transform some of our outdoor spaces. We had no idea at the time, the extra value those new open spaces would be as we reopen the campus in a new era of

"We are committed to leading through this pivotal time with transformative learning."

social distancing. I'm thankful for administrators who thoughtfully assessed learning spaces and revised schedules to provide smaller classes, limit hall transitions, expand dining areas, and think through how to make it all come together. I'm thankful for increased interest in GAC this summer by prospective families. In fact, in the last week we opened new classes in several grade levels due to increased applications and growing wait pools.

Last but not least, I'm thankful for each of you - our GAC families. You've partnered with us in new ways. You gave feedback to surveys, shared with friends why you selected GAC, and inspired and encouraged us.

Yes, this is an uncertain time. Outlined on the following pages are our best plans based on what we know today. As we learn more, these will most likely change but we will not be anxious; we are trusting in the Lord and we are thankful to be returning to school. We are greater together. The coming 2020-2021 school year holds much promise and opportunity. We are ready!

Scott Harsh, Ed.D.
President

TABLE OF CONTENTS



In this plan you will find the details
of our steps to welcome students
back on campus:

A Flexible Academic Plan - The GAC Choice: Synchronous Learning	4
Health and Safety Measures	5
Campus Life	7
A Progressive Start of School	9
A Phased Approach for Decision Making	11
Frequently Asked Questions	12
Who to Contact & Resources	18

A FLEXIBLE ACADEMIC PLAN

THE GAC CHOICE: SYNCHRONOUS LEARNING

Planning for the 2020-2021 school year prioritizes student health and safety, social-emotional well-being, and the importance of continuity of learning. We are committed to a successful face-to-face learning environment on campus and from home. However, we all recognize that this year school will look different. We recognize some of our families may not be ready to return to an in-person learning environment. We also realize that students who choose the in-person, on campus learning environment may need to participate from home at some point in the school year.

For the past several months, a team of GAC senior leaders, school level administrators, and lead teachers have been working to transform our K-12 learning spaces so that classes can be taught face-to-face and online, **simultaneously**. GAC's Synchronous Learning (**GAC Sync**) provides students real-time teaching and collaboration regardless of location, allowing our families the flexibility to choose (even on a daily basis) to attend school on campus, from home, or while traveling. View this 90-second [video](#) to see a demonstration.

This investment in technology and teacher training allows us to go well beyond what we offered during the spring 2020 shelter-in-place mandate, truly transforming the GAC educational experience. Furthermore, all instructional content, will be recorded daily and readily available for students to access later. So, when a student wants to review a given concept discussed in class, they can view the lesson as many times as needed. Incorporating this technology as part of the GAC learning environment also helps us maintain a healthier campus. Students who do not feel well for any reason, on any given day, can stay at home but not miss valuable class time.

“We know there is much uncertainty around us, yet we believe GAC is in a unique position to move forward with exemplary educational opportunities for your children.”

Students utilizing GAC Sync from home will be expected to adhere to the current Student-Parent Handbook, including academic, attendance, uniform, and behavior policies.

8-Period Block Schedule (Grades 6-12)

As announced June 26, 2020 and in conjunction with GAC Sync, we have adjusted the daily schedule for [middle school](#) and [high school](#) students. The new 8-period schedule will allow us to reduce class sizes, offer more electives, and create some flex time in the school day. In addition to electives, your student may choose a “Learning Lab” which will allow time during the day to work on homework or take a mental break. The new rotating block schedule also reduces the number of class transitions during the school day.

HEALTH AND SAFETY MEASURES

Our goal is to bring our community back to campus while prioritizing everyone's health and safety. We have invested much time and over \$1.4M in financial resources to make changes to the campus and our processes. We will need to work together to stay as healthy as possible. The learning environment at GAC will look different this fall, with measures in place to provide the best educational experience while protecting the health of every student and our faculty/staff.

We recognize that we are in a changing environment and therefore will be continually reevaluating our processes. We are monitoring the recommendations provided by the Centers for Disease Control and Prevention (CDC) and the Georgia Department of Public Health (DPH). GAC leaders and nurses participate in partner calls with the Gwinnett, Newton, Rockdale County Health Departments (GNR Health) on a weekly basis to hear the most up-to-date information. We are unique from other school systems in that the GAC campus has been open since mid-May for our Young Learners, and since mid-June for Summer Camp, and other approved activities. This has allowed us to practice and fine tune our protocols.

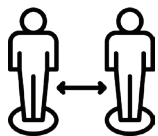


CLEANING, SANITIZING AND VENTILATION

All GAC buildings have been deep cleaned and will continue to be thoroughly cleaned daily. There will be an increased presence of custodial services during the school day to help with additional cleaning of high-touch surfaces and restrooms.

We are using professional-grade electrostatic sprayers that allow for increased disinfecting throughout our buildings. Bioesque is the primary disinfecting solution that is used by our Campus Services and our custodial teams. We added [Nanoseptic](#) self-cleaning surfaces to all high traffic touch points in classrooms, offices, restrooms and elevators.

Our ventilation systems have been serviced to make sure they are performing at optimal efficiency and effectiveness. We have increased our HVAC staff to allow for continued maintenance and servicing of all units throughout the year.



PHYSICAL/SOCIAL DISTANCING

Physical/social distancing is a proven factor in reducing the spread of illness. GAC has always maintained smaller class sizes than many other schools. However, we have adjusted class sizes, and ordered additional classroom furnishings including 400 new desks to provide appropriate spacing between students. For students in 6-12th grade our 8-period schedule reduces the number of students in each class. The rotating block schedule also decreases the number of class transitions per day. We will also limit the number of individuals in indoor common areas and alter traffic patterns in hallways.

We are blessed to have many wonderful outdoor spaces on the GAC campus that will provide opportunity to spread out during the day. The 90+ acre walkable campus features outdoor spaces including Strickland Plaza, the Gilbreath Pavilion, and the new GAC Park in the center of campus connecting Hollis Smith Plaza, Combee Elementary Complex and the Village. Students also experience the outdoors through our Nasmyth Environmental Center and the Adventurescape.



HEALTH SCREENINGS/INFECTION CONTROL

Our plan is to have an online screening platform for parents to screen their children at the start of each school day. More details will be shared before the start of school. Parents are asked to keep ill students home and to notify their school level nurse of Covid-19 related illness. Faculty and staff will also be asked to stay home when they are ill.

Individuals who are noticeably ill or become ill during the school day will be isolated and sent home without delay. We are creating a new MS/HS Health Center as well as adding an additional room in the Combee Elementary to isolate sick students, faculty and/or staff members. This will allow for separation from the general student body.

Our health team, which includes administrators, school nurses and our athletic trainer will work directly with the local health department on cases of Covid-19 and the related exposure including contact tracing assistance and notification. We have created a flowchart (page 17) showing the current guidelines for returning to school after exposure to Covid-19. This flowchart outlines the current recommendations by the CDC and is subject to change.



HEALTHY HYGIENE

Teaching, modeling, and reinforcing healthy hygiene habits will remain a priority at all levels. Proper hand washing methods, covering of coughs, and using hand sanitizer will be encouraged at all school levels.

We have also added touchless hand sanitizer stations at entrances/exits to all buildings and additional signage in each building to remind students, faculty and staff of the importance of social distancing and washing your hands. Each classroom is equipped with disinfectant, paper towels, hand sanitizer, and tissues. Following the DPH and CDC guidelines we have disconnected all communal drinking fountains and have installed at least one bottle filler fountain in each of our buildings. We have also installed sneeze guards for all administrative desks, the Technology Help Desk, both Media Center check out desks and the Spartan Store.



FACE COVERINGS/MASKS

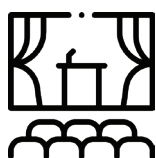
We are following the changing guidelines recommended by the CDC and DPH. We will be requiring face coverings for all students (K4-12), faculty, staff, and visitors when inside our buildings or when you are unable to social distance outside.

Approved face coverings include two-layer cloth masks, disposable masks, or neck gaiters. All face coverings are to be solid in color and without valves, messaging, branding, or designs (with the exception of GAC branding). We will purposely provide face-covering breaks throughout the school day.

CAMPUS LIFE

We recognize that an important element of the GAC mission - “to help each student grow as Jesus did in wisdom and stature and in favor with God and Man” includes many experiences beyond the classroom. Our goal is to provide as many of these experiences as possible, however some may need to be adjusted or postponed during this time.

Please note: All students including those choosing GAC Synchronous Learning (GAC Sync) from home will be allowed to fully participate in all co-curricular and campus life activities at GAC.



CHAPELS, ASSEMBLIES, AND SPECIAL EVENTS

Chapels and other assemblies are an important part of the GAC experience, and we commit to re-imagining these important segments of student life. This may include utilizing our new technology to provide streaming into each classroom or creating curriculum that involves small group gatherings in classrooms.



ATHLETICS AND PERFORMING ARTS

At this time, activities are set to continue with health and safety as a priority. Our GAC athletic staff follows the guidance from the Georgia High School Association (GHSA), the CDC, and the DPH who will govern our steps forward.



Currently the GHSA has allowed athletic teams to practice during the summer with strict guidelines. However, they have not yet made a decision regarding fall sporting events. More information will be communicated by individual team coaches and the Athletics Office regarding our athletic teams, Tennis Academy, and Aquatics Club.

Performing Arts activities will be scheduled when and where health and safety standards can be met on campus. Special accommodations and certain restrictions will be in place for these classes/groups, including the School of Ballet and the School of Music and will be communicated by the Fine Arts Office and individual teachers or leaders.



BEFORE AND AFTER SCHOOL PROGRAMS

Our plan is to continue with all [before and after school programs](#) for students K3-5th grade (Encore Kids) and 6th-12th (The Club) and our [Discovery Activities](#) for our Lower School students. While following all CDC and DPH protocols, these programs provide a safe and supervised option for your student.

While it has always been important to GAC to not have unsupervised children before or after school, the current health and safety conditions prohibit unsupervised students on campus at any time. If you need your child to be at GAC outside of the normal school hours, please enroll them in one of our programs.



DINING SERVICES

We have adjusted schedules and traffic flows to/from lunch for both dining halls to allow for social distancing. The GAC campus is blessed with wonderful facilities with a great amount of space which have allowed us to expand seating areas for students, faculty and staff. The MS/HS Dining Hall will extend further into the Bricked Gallery and the upper level of Long Forum with added tables to allow for appropriate spacing. Our Elementary and Village students will be utilizing the Combee Cafeteria as well as additional spaces in their buildings. Young Learners will remain in their classrooms for lunch.

Eating outside or in classrooms may be part of the lunch routine from time to time. Additional cleaning and sanitizing will be conducted between lunch periods. Sage Dining Services will be altering their processes and procedures including food being served by Sage employees reducing self-serve stations.



TRANSPORTATION

We will continue to offer all GAC [bus transportation routes](#) including our late routes. Bus drivers and riders will be wearing face coverings, and social distancing will be standard practice on all buses.



TRAVEL AND SCHOOL TRIPS

Global travel, mission trips, school trips and spiritual retreats are key experiences for our students. We plan to continue to evaluate when we may resume travel for our students, and are hopeful that will be spring semester. For now all class trips, mission trips, and learning excursions are postponed. However, we will continue to look for ways to offer local options with similar impact for our students.



VISITORS AND PARENT VOLUNTEERS

In order to minimize risk and exposure for our students, this year we will greatly reduce the number of campus visitors. This is contrary to our desire to always welcome family members at lunch and throughout the school day.

For the time being, we are asking that only essential volunteers or parents with an appointment come inside a building. Face coverings and health screenings will be required for all visitors prior to entering any building. Parents are encouraged to call school level offices for needs throughout the day rather than coming into the buildings. When a parent needs to be on campus, for instance when checking in or out a student, they will be asked to stay in the lobby/common area of school level buildings.

The Spartan Store will remain open but like other retail stores we will limit the number of customers in the store at a single time. [Appointments](#) are highly recommended when shopping for uniforms. Unless you are visiting the Spartan Store, the Grandparent Commons of Fincher Student-Family Center will be closed.

A PROGRESSIVE START OF SCHOOL

Our goal is to have a successful start of school for all families, those with students who plan to start the school year on-campus and those who make the decision to keep their students at home a little longer. In order to achieve this goal we have planned a phased, progressive and rotating start to the school year which will allow students to practice new on-campus protocols that have been put in place for the health and safety of our community including class transitions, dining hall experiences, carpool, playground, and more.

In addition, we believe there is value for all students to have an initial synchronous experience from home to understand the options available to them as the school year continues. We recognize that students choosing the in-person option may have a reason throughout the year to utilize GAC Sync from home, whether by choice, when sick (Covid-19 or non-Covid related), or by the need to quarantine after possible exposure to Covid-19.

Students in K3 and younger will not be participating in GAC Sync and therefore will start the first day of school using their normal schedule.

Students in K4-12 th grade will be split into three groups for the first two weeks of school.

- Group A: Students with a last name starting A-K who choose in-person at GAC.
- Group B: Students with a last name starting L-Z who choose in-person at GAC.
- Group C: Students who choose GAC Sync from home.
- **Please complete this [GAC Choice form](#) to let us know you are choosing the GAC Sync from home option.**

If you do not complete the form, we assume your child will be on campus as we start the school year.

Note: For the first three weeks we are asking students to remain with their choice of either on campus or GAC Sync from home. After those three weeks you may change your option at any time.



Middle and High School Schedule for the first three weeks:

GRADES 6th-12th	MONDAY	TUESDAY	WEDNESDAY	THURSDAY	FRIDAY
Week 1 (August 10-14)	Periods 1-8 Group A: First day in-person at GAC Groups B & C will not have class	Periods 1-8 Group B: First day in-person at GAC Groups A & C will not have class	Periods 1-8 Group C: First day of GAC Sync from home Groups A & B will not have class	Periods 1-8 Group A: In-person at GAC Groups B & C: GAC Sync from home	Periods 1-8 Group B: In-person at GAC Groups A & C: GAC Sync from home
Week 2 (August 17-21)	Periods 1, 3, 5 & 7 Group A: In-person at GAC Groups B & C: GAC Sync from home	Periods 2, 4, 6 & 8 Group A: In-person at GAC Groups B & C: GAC Sync from home	Periods 1, 3, 5 & 7 Group B: In-person at GAC Groups A & C: GAC Sync from home	Periods 2, 4, 6 & 8 Group B: In-person at GAC Groups A & C: GAC Sync from home	All 8 periods Groups A & B: In-person at GAC Group C: GAC Sync from home
Week 3* (August 23-27)	All 8 periods Groups A & B: In-person at GAC Group C: GAC Sync from home	Periods 1, 3, 5 & 7 Groups A & B: In-person at GAC Group C: GAC Sync from home	Periods 2, 4, 6 & 8 Groups A & B: In-person at GAC Group C: GAC Sync from home	Periods 1, 3, 5 & 7 Groups A & B: In-person at GAC Group C: GAC Sync from home	Periods 2, 4, 6 & 8 Groups A & B: In-person at GAC Group C: GAC Sync from home

**This is our normal weekly schedule for the remainder of the semester*

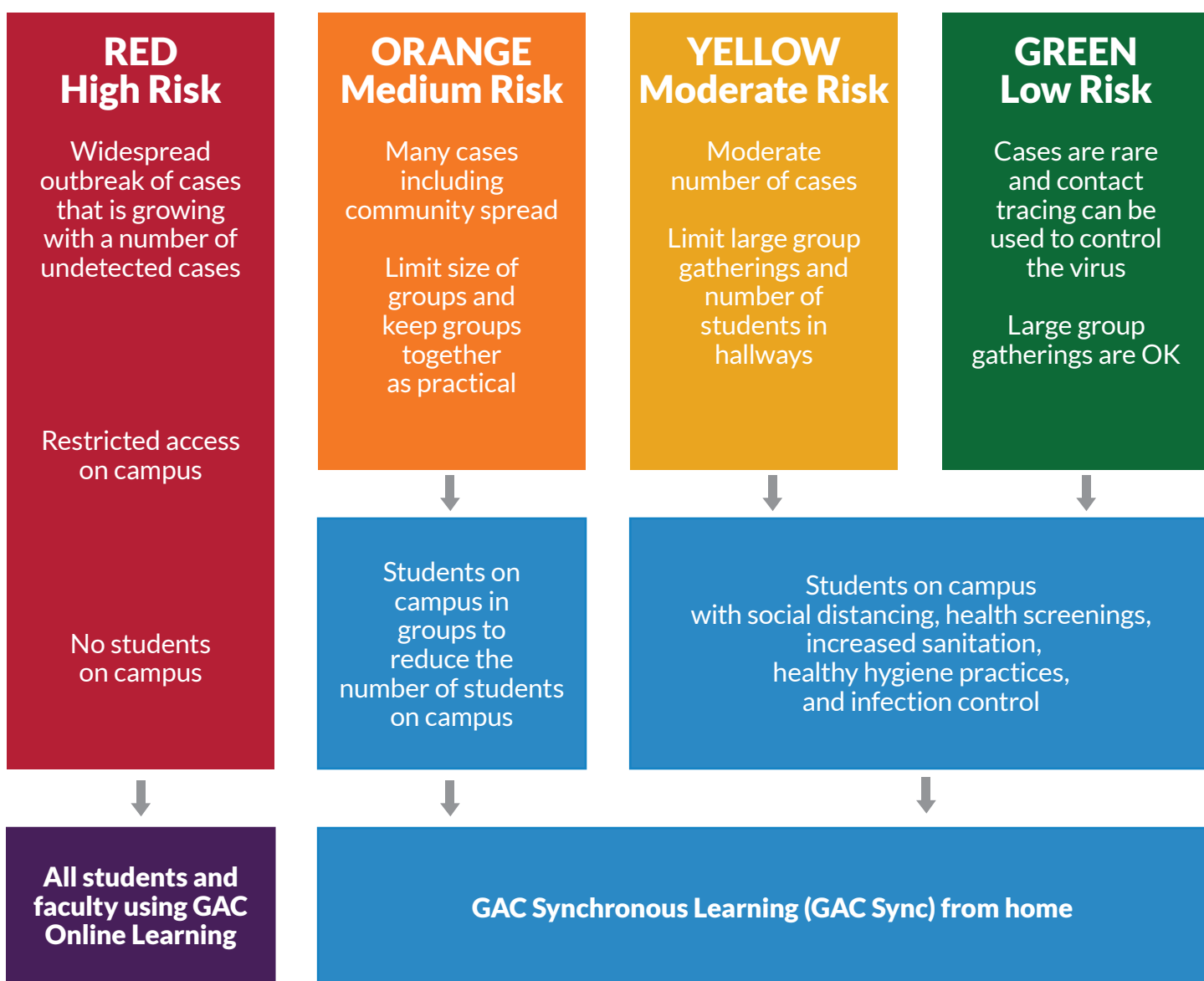
Elementary and Village Schedule for the first three weeks:

GRADES K4-5th	MONDAY	TUESDAY	WEDNESDAY	THURSDAY	FRIDAY
Week 1 (August 10-14)	Group A: First day in-person at GAC Groups B & C will not have class	Group B: First day in-person at GAC Groups A & C will not have class	Group C: First day of GAC Sync from home Groups A & B will not have class	Group A: In-person at GAC Groups B & C: GAC Sync from home	Group B: In-person at GAC Groups A & C: GAC Sync from home
Week 2 (August 17-21)	Group A: In-person at GAC Groups B & C: GAC Sync from home	Group A: In-person at GAC Groups B & C: GAC Sync from home	Group B: In-person at GAC Groups A & C: GAC Sync from home	Group B: In-person at GAC Groups A & C: GAC Sync from home	Groups A & B: In-person at GAC Group C: GAC Sync from home
Week 3* (August 23-27)	Groups A & B: In-person at GAC Group C: GAC Sync from home	Groups A & B: In-person at GAC Group C: GAC Sync from home	Groups A & B: In-person at GAC Group C: GAC Sync from home	Groups A & B: In-person at GAC Group C: GAC Sync from home	Groups A & B: In-person at GAC Group C: GAC Sync from home

**This is our normal weekly schedule for the remainder of the semester*

A PHASED APPROACH FOR DECISION MAKING

While we are committed to return to face-to-face learning, we realize that the health situation in our community is changing constantly. Because of the current level of community spread of Covid-19 we realize it is highly likely that we will eventually have positive cases within our student body or faculty/staff. We have adopted **a four-phased plan to guide our decision making** and to communicate our approach to teaching and learning.



FREQUENTLY ASKED QUESTIONS

GAC is taking extensive measures to support strong academics while maintaining the health and social-emotional well-being of our students, faculty and staff. We will continue to add to these FAQs as common questions arise.

LEARNING

What does the start of school look like this year?

Our annual Spartan2gether will be altered this year to provide for smaller groups on campus at a single time and will be called Spartan Preview. It will still be held on Thursday, August 6. Each family will be assigned a time slot based on the first letter of their last name. Watch for further details.

To allow time for students to adjust to new procedures and processes on campus in smaller groups we have adopted a phased, progressive and rotating start to the school year.

Students in K3 and younger will not be participating in GAC Sync and therefore will start the first day of school using their normal schedule.

Students in K4-12 th grade will be split into three groups for the first two weeks of school.

- Group A: Students with a last name starting A-K who choose in-person at GAC.
- Group B: Students with a last name starting L-Z who choose in-person at GAC.
- Group C: Students who choose GAC Sync from home.
- Please complete this [GAC Choice form](#) to let us know you are choosing the GAC Sync from home option.

If you do not complete the form, we assume your child will be on campus as we start the school year.

- All students in [middle school](#) and [high school](#) will follow a new 8 period schedule.

How is the new Synchronous Learning option different from remote learning we have experienced during inclement weather days or during the spring 2020 shelter-in-place mandate?

GAC Synchronous Learning (GAC Sync): GAC has been investing in Ethos, our online learning platform, for several years and introduced a hybrid model last year as we worked to provide more choice for families. This spring accelerated our research and development for the best in online learning tools. This summer GAC has installed AI technology in every classroom, with smart cameras, directional microphones, and interactive white boards, to enable students who choose at-home learning to be more fully integrated into their real-time classroom, and with their teacher and classmates. The real-time teaching and collaboration are automatically recorded for later reference by the student.

This cutting-edge technology offers families on-going flexibility while not compromising on a robust education, complete with class collaboration and content sharing. With this model a family may also choose to attend school in person a few days a week, and then utilize the synchronous option to learn at home the remaining days. If a family needs to travel, they can make that choice and not have to “pull the kids out of school”. Their students’ learning continues seamlessly while traveling. If your student has symptoms of an illness but still feels well enough to attend class, they can stay at home and do just that.

GAC Online Learning: Used during the spring shelter-in-place mandate, this model was effective for learning when everyone was remote due to the campus being closed. All teachers and students were physically at home. GAC Online Learning utilizes Zoom or other virtual meeting type software where teachers and students can conduct class virtually. This model may be used again if the campus must close due to Covid-19, inclement weather, or other emergency situations.

Cyber School: The “cyber school” model used in the past during inclement weather days was focused around the completion of assignments with minimal interaction between students and teachers. This model will no longer be utilized at GAC.

How is the new Synchronous Learning option different from Ethos courses or the GAC Hybrid Model?

Ethos: GAC offers online courses through its Ethos School. Ethos currently offers 69 Middle and High School courses in all subjects ranging from AP to college prep. The educational model utilizes both an asynchronous and synchronous learning environment. A student in an Ethos course has greater flexibility around when they want to complete their assignments as they watch instructional content from a highly interactive video platform that provides built in assessments with immediate feedback. The videos have been created by GAC teachers and are viewed asynchronously. Ethos courses are highly engaging as the student will also have required times that they will attend class synchronously online with their teacher and student peers. They also will have access to help sessions with their teacher.

GAC Hybrid Model: This model provides a student with the option of being on campus for part of a day, and taking the remainder of their courses through Ethos. This is perfect for a student who wants to focus on an extracurricular activity that requires a large amount of time that would occur during the normal school day. For instance, a hybrid student might attend school at GAC for the morning hours and leave by lunch every day. Their remaining coursework would be completed asynchronously via Ethos in the evening.

What if I am not comfortable sending my child to campus?

The new GAC Sync provides options for families who do not feel comfortable sending their students to school. Students may remain at home and participate fully in their same class, with the same teacher and classmates. (View 90-second [video](#) for demonstration.)

This new option is available to all GAC students for any given day or any period of time. Details of how to notify the school will be provided later.

If you do not complete the [GAC Choice form](#) we will assume your children will be on campus for in-person learning as we begin the school year.

Do I have to make a decision about where we learn for the entire semester?

The new GAC Sync option is designed to give families the ability to choose on any given day to not be on campus for class. However, as we start this school year, we are asking families to let us know whether they plan to use the GAC Sync from home by completing [GAC Choice form](#) so that we can appropriately plan for the transition back to school in smaller and managed groups. We ask that you remain using this option for the first three weeks. This does not mean families are “locked in” to that choice beyond those initial three weeks. Families are able to make a daily decision for each student, depending on comfort level and family circumstances.

FINANCES

Will I have the same tuition if I chose the GAC Sync from home?

Regardless of whether your child attends GAC on campus or uses the synchronous learning (GAC Sync) from home, the tuition remains the same. The tuition schedule and budget for 2020-2021 was established by the Board of Trustees in January, 2020. The majority of the school's budget consists of the investment in teachers and staff through compensation, benefits, and professional development. The second largest budget item is dedicated to programmatic development and curriculum. In addition, this summer we invested significant financial resources in technology, infrastructure, and training to be able to provide the synchronous learning option.

Most importantly, GAC Sync will provide each student access to the same educational experience - classroom, teacher, and classmates - regardless of where they are physically located. In addition, all students will have full access to GAC activities, teams, co-curriculars, teacher help sessions, counseling, and facilities.

Will reimbursements be made for services not used?

We do not plan to issue any reimbursement for tuition. At this time we also will not be issuing any reimbursement for other charges, however we will evaluate these "non-tuition charges" as the year progresses. For instance, if we cannot take class trips during the 2020-2021 school year, then the funds for class trips may be refunded or credited toward your student's class trip in the 2021-2022 school year. We did this type of evaluation last spring for our families and offered over \$1.2M in refunds and credits at that time.

If GAC is required to shut down for on-campus instruction, by order of authorities or due to moving to the "red phase", we will shift to GAC Online Learning for all students for the limited time necessary until we can return to on-campus instruction. In such a scenario we do not intend to discount tuition. Our intent is to return to on-campus instruction as soon as possible, recognizing that expenses related to our operations, including faculty and staff compensation and expenses continue even in the online learning environment.



HEALTH AND SAFETY

How can I be an active partner in helping GAC provide a healthy environment?

Parents can encourage their children to practice social distancing and healthy hygiene habits. In addition, please keep your child at home if they are experiencing any symptoms of any type of illness. GAC Sync provides our students the ability to continue their learning from home.

Please ensure your students complete the daily health screening before coming to campus either for class or for activities. This will include the completion of standard screening questions and a temperature check. We will share specifics about the health screening platform before school starts.

What protective health measures will be implemented?

Following guidelines from the Centers for Disease Control and Prevention (CDC) and the Georgia Department of Public Health (DPH), GAC has adopted the following protocols: required daily healthy screenings; modified furniture arrangement in classrooms; adjusted class sizes and schedules; mandatory face masks for all faculty, staff, students K4-12 and any visitors in all buildings; deep cleaning of buildings and frequent cleaning of high touch surfaces-- including additional cleaning and sanitizing between lunch periods; touchless thermometers in each school office; retrofitted many of our water fountains to provide for a hands-free bottle filling option of filtered water; added Nanoseptic self-cleaning surfaces to all high traffic touch points in classrooms, offices, restrooms and elevators; added sneeze guards at all administrative desks, the Technology Help Desk, Media Center check out desks, and Spartan Store; added UV lights for our science and fine arts community to sanitize supplies used by larger groups.

We are also establishing a new MS/HS Health Center and an additional room in the Combee Elementary for students or faculty/staff who may become sick during the day. Individuals feeling ill will be isolated and sent home without delay. Students, faculty or staff who do not pass the daily screening will be required to stay home. Until the Covid-19 situation improves, we will restrict non-essential visitors from entering school buildings.

Anyone inside our buildings or where social distancing is not feasible outside will be required to wear face coverings.

Will there be hand sanitizer stations?

In addition to the hand sanitizer stations already available, we are adding many more touchless stands throughout campus, including all building entrances and exits, to ensure that all students have access to enough sanitizer. Students will also be encouraged to wash their hands frequently throughout the day.

How will social distancing be practiced? Will classroom sizes or layouts change?

While GAC normally maintains small class sizes, furniture and classroom arrangements have been modified to provide appropriate spacing. Students in Middle and High School will follow a rotating block schedule that reduces the number of class changes and movement in the hallways during the school day. Transitions in the hallways for students in the Lower School buildings will be staggered.

Students will be discouraged from congregating in areas of campus when social distancing is not possible. Large gatherings will not be planned unless adequate social distancing can be maintained. We will also be limiting the number of guests in the Spartan Store.

How will movement flow and congestion be controlled in the buildings?

We are adding directional signs on the floor and entry/exit only signs on doors to help reduce congestion and create one-way hallways to encourage continuous movement. We are also adding large signs with reminders for students to social distance. Congregating in hallways will be discouraged.

Will my child still have before and after school activities?

Before and after school care will be available, and will follow established health protocols. Pending guidance from the Georgia High School Association (GHSA) will help determine the steps for athletics. Performing Arts activities will be scheduled when and where health and safety standards can be met on campus.

All students whether learning on campus or from home will be allowed to participate in all activities.

How will lunch be managed?

Sage Dining is adhering to established food service best practices in both dining halls. All Sage employees will wear PPE. Adjustments to the dining experience include: adding additional hand sanitizing stations; adjusting traffic flow in/out of each dining hall and adjusting food service traffic flow. Lunch schedules have also been adjusted to allow for social distancing. Food will be served by Sage employees reducing self-serve stations.

MS/HS Dining Hall will have modified table placement and limits to 4 seats per table. We will extend the MS/HS into Long Forum with added tables to allow for spacing. Our Elementary and Village students will be utilizing the Combee Cafeteria as well as additional spaces in their buildings. Young Learners will remain in their classrooms for lunch. Eating outside or in classrooms may be part of the lunch routine from time to time. Outside tables are available near the MS/HS food truck.

What happens when a student, teacher, or staff member tests positive for Covid-19?

When we are alerted to a positive case of one of our students, teachers, or staff members, we will contact the Gwinnett, Newton, Rockdale County Health Department (GNR Health) and seek guidance, as has been our practice since our campus re-opened in mid-May. Each confirmed case of Covid-19 will be assigned to a trained DPH staff member to identify those who have been in close contact with the individual. We will work with them to assist with contact tracing and notification. Privacy laws restrict us from sharing the name of any individual who has tested positive.

When can a person who has tested positive or is considered a close contact of a person who has tested positive return to school?

The DPH recommends a time-based return to school strategy that is determined based on a person's health status. GAC will abide by the recommendations of the DPH as detailed here:

<https://dph.georgia.gov/contact>.

We have created a flowchart (page 17) showing the current guidelines for returning to school after exposure to Covid-19. This flowchart outlines the current recommendations by the CDC and is subject to change.

PROTOCOL FLOWCHART FOR STUDENTS AND FACULTY/STAFF

Covid-19 SYMPTOMS: Feeling feverish or a measured temperature greater than or equal to 100.4°F • Cough • Shortness of breath or difficulty breathing • Chills • Shaking or exaggerated shivering • Significant muscle pain or ache • Sore throat • Loss of taste or smell • Diarrhea



*Close Contact = Contact with individual within 6 feet for at least 15 minutes regardless of face covering.

** Some illnesses have similar symptoms and may not require isolation. Consult with your healthcare provider and contact the GAC nurse.

CONTACT INFORMATION AND RESOURCES

“Be anxious for nothing, but in everything by prayer and petition, let your requests be made known to God; and the peace of God, which surpasses all understanding, will guard your hearts and minds through Christ Jesus.” Philippians 4:6-7



Who to contact at GAC

Jimmy Chupp

Director of School Life

jchupp@greateratlantachristian.org

Annabelle Townsend

Middle School & High School Nurse

atownsend@greateratlantachristian.org

Kristen Wilson

Lower School Nurse

kwilson@greateratlantachristian.org

Rhonda Helms

Lower School Principal

rhelms@greateratlantachristian.org

T.J. Dixon

Middle School Principal

tdixon@greateratlantachristian.org

Shane Woodward

High School Principal

shanewoodward@greateratlantachristian.org

Chad Dybdahl

Athletic Trainer

cdybdahl@greateratlantachristian.org

Resources

[Centers for Disease Control and Prevention \(CDC\)](#)

[Governor Kemp Executive Orders](#)

[Georgia Department of Public Health](#)

[Gwinnett, Newton, Rockdale Health Departments](#)

[Georgia Insights](#)

[American Academy of Pediatrics](#)

[Georgia High School Association](#)