

September 23, 2016

District Health & Safety
St. Anthony-New Brighton ISD #282
3303 – 33rd Avenue NE
St. Anthony, MN 55418



*Providing Trusted
Health & Safety Solutions*

**RE: Lead-in-Water First Draw – Initial Testing & Retesting
IEA Project #201610707**

Health & Safety Representative:

At the request of St. Anthony-New Brighton ISD #282, IEA collected samples of drinking water for lead analyses from the following buildings on August 11, 2016, September 1, 2016 and September 2, 2016:

- Community Services Building
- St. Anthony Village HS & Middle School
- Wilshire Park Elementary School

The purpose of the sampling was to document lead levels in the sampled locations and to compare them to the EPA action level of 20 parts per billion (ppb).

INTRODUCTION

The Lead Contamination Control Act (LCCA) of 1988 was created by the Environmental Protection Agency (EPA) to identify and reduce lead in drinking water. Both the EPA and the Minnesota Department of Health (MDH) recommend testing of potable water sources (water used for consumption) every five years for the presence of lead. Lead is a metal that usually enters drinking water through the distribution system, including pipes, solder, faucets, and valves. Lead levels in water may increase when the water is allowed to sit undisturbed in the system, such as in science, biology, or art areas. Exposure to lead is a significant health concern, especially to infants and young children whose growing bodies absorb lead more readily than adult bodies do. Lead exposure can cause delays in physical and/or mental development in children and damage to the brain, kidneys, nervous system, and red blood cells. The EPA and MDH recommend that action be taken at a specific fixture when the lead concentration exceeds the EPA's action level for schools of 20 parts per billion (ppb).

METHODOLOGY

IEA collected one hundred forty-two (142) first-draw samples of approximately 500 milliliters (ml). "First draw" means the samples are collected before the fixture is used or flushed during the day. The first-draw sample results reflect a worst case scenario, i.e., the highest lead level that would be consumed by building occupants.

A site map with sample locations is included in Appendix A. Water samples were analyzed by Minnesota Valley Testing Laboratories (MVTL) in New Ulm, Minnesota, which uses EPA-approved analytical methods and quality control/assurance procedures. Samples were analyzed using the ICP/MS EPA Method 200.8.

INSTITUTE FOR ENVIRONMENTAL ASSESSMENT, INC.
www.ieasafety.com

BROOKLYN PARK
9201 West Broadway, #600
Brooklyn Park, MN 55445
763-315-7900 / FAX 763-315-7920
800-233-9513

MANKATO
610 North Riverfront Drive
Mankato, MN 56001
507-345-8818 / FAX 507-345-5301
800-233-9513

ROCHESTER
210 Woodlake Drive SE
Rochester, MN 55904
507-281-6664 / FAX 507-281-6695
800-233-9513

BRainerd
13432 Elmwood Drive, Ste. #5
Baxter, MN 56425
218-454-0703 / FAX 218-454-0703
800-233-9513

MARSHALL
1420 East College Drive
Marshall, MN 56258
507-476-3599 / FAX 507-537-6985
800-233-9513

RESULTS & DISCUSSION

The lead-in-water sample results ranged from below the level of detection (<0.05 ppb) ppb to 249 ppb. There were 16 sample results that exceeded the EPA action level of 20 ppb. Results greater than 20 ppb are displayed in *Tables 1: Water Testing Results Exceeding 20 ppb*. The laboratory report and chain of custody (COC) form are provided in Appendix B. Laboratory results are reported in micrograms per liter (µg/L) which is equivalent to parts per billion (ppb).

Table 1: Water Testing Results Exceeding 20 ppb – August 11, 2016 & September 1, 2016

Sample Number	Building	Sampling Location	Fixture Type	Lead Results (ppb)	Retest Lead Results (ppb)
WP2*	Wilshire Park Elementary	Kitchen	Sprayer	30.2	13.8
					12.4 (after 15 second flush)
WP5*	Wilshire Park Elementary	Kitchen (North Wall)	Sink (West)	249.0	12.2
WP8	Wilshire Park Elementary	Room 120	Sink	77.2	
WP15	Wilshire Park Elementary	Room East of 127	Sink	43.1	
WP28	Wilshire Park Elementary	Room 100A	Sink	196.0	
WP34*	Wilshire Park Elementary	Room 102	Drinking Fountain	36.6	14.3
WP37	Wilshire Park Elementary	Room 137	Sink (North)	26.7	
WP39	Wilshire Park Elementary	Room 138	Sink	20.4	
WP47	Wilshire Park Elementary	Room 117	Sink (Wall)	34.3	
WP49	Wilshire Park Elementary	Room 118	Sink (Mid-East)	32.8	
WP53*	Wilshire Park Elementary	Room 109	Drinking Fountain	20.8	6.20
ST4	St. Anthony HS/MS	Pool	Drinking Fountain (South)	22.2	
ST15*	St. Anthony HS/MS	Weight Room Storage	Sink	21.0	6.16
ST52*	St. Anthony HS/MS	Room 215	Sink (Teachers Station)	87.8	8.80
ST61*	St. Anthony HS/MS	Room 305	Sink	24.4	10.2
ST65	St. Anthony HS/MS	Room 313	Sink	23.6	

ppb – parts per billion

*Fixture was resampled following the MDH recommended flushing

In addition, 10 results showed lead levels between 15 ppb and 20 ppb. See *Table 2: Water Testing Results Approaching 20 ppb* for these results. Although the EPA recommends that school drinking water not exceed 20 ppb, the MDH recommends schools seek to reduce the amount of lead in drinking water to as close to zero as possible.

Table 2: Water Testing Results Approaching 20 ppb – August 11, 2016 & September 1, 2016

Sample Number	Building	Sampling Location	Fixture Type	Lead Results (ppb)	Retest Lead Results (ppb)
WP6*	Wilshire Park Elementary	Kitchen (North Wall)	Sink (East)	19.1	12.1
WP13*	Wilshire Park Elementary	Room 126	Drinking Fountain	15.9	1.58
WP20	Wilshire Park Elementary	Gymnasium	Drinking Fountain (West)	17.9	
WP29	Wilshire Park Elementary	Room 136	Sink	15.6	
WP33*	Wilshire Park Elementary	Room 101	Drinking Fountain	18.4	12.1
ST3	St. Anthony HS/MS	Pool	Drinking Fountain (North)	16.4	
ST25*	St. Anthony HS/MS	Kitchen Serving Area	Sink (NE Corner)	18.5	5.16
ST28*	St. Anthony HS/MS	Kitchen Serving Area (South Wall)	Sink (East)	15.2	12.5
ST51*	St. Anthony HS/MS	Room 217	Sink (Teachers Station)	16.3	3.74
ST60*	St. Anthony HS/MS	Room 303	Sink (Teachers Station)	15.1	4.42

ppb – parts per billion

*Fixture was resampled following the MDH recommended flushing

RETESTING

After laboratory analysis was received, the district informed IEA that many of the fixtures may not have been flushed 8-18 hours prior to sampling as recommended by the Minnesota Department of Health (MDH). Sampling was performed during the summer break when the building was not fully occupied and fixtures may have been sitting for some time without use. Fifteen fixtures were flushed as recommended and re-sampled on September 2, 2016.

Analysis of these additional water samples showed lead concentrations ranging from 1.58 ppb to 14.3 ppb which are all below the EPA Action Level of 20 ppb. The laboratory reports and chain-of-custody (COC) are provided in Appendix B.

After initial testing and retesting, the following twelve (12) fixtures have been determined to have a lead concentration exceeding or approaching the standard. The district responded to the elevated lead levels as soon as results were received. See district action below in Table 3.

Table 3: Water Testing Results Exceeding or Approaching 20 ppb following the initial testing and retesting performed on September 2, 2016

Sample Number	Building	Sampling Location	Fixture Type	Lead Results (ppb)	District Action After Testing
WP8	Wilshire Park Elementary	Room 120	Sink	77.2*	Fixture replaced and to be retested.
WP15	Wilshire Park Elementary	Room East of 127	Sink	43.1*	Sign Posted: Not for consumption
WP20	Wilshire Park Elementary	Gymnasium	Drinking Fountain (West)	17.9	Fixture disconnected from service.
WP28	Wilshire Park Elementary	Room 100A	Sink	196.0*	Fixture replaced and to be retested.
WP29	Wilshire Park Elementary	Room 136	Sink	15.6	Fixture replaced and to be retested.
WP37	Wilshire Park Elementary	Room 137	Sink (North)	26.7*	Fixture replaced and to be retested.
WP39	Wilshire Park Elementary	Room 138	Sink	20.4*	Fixture replaced and to be retested.
WP47	Wilshire Park Elementary	Room 117	Sink (Wall)	34.3*	Fixture replaced and to be retested.
WP49	Wilshire Park Elementary	Room 118	Sink (Mid-East)	32.8*	Fixture replaced and to be retested.
ST3	St. Anthony HS/MS	Pool	Drinking Fountain (North)	16.4	Fixture replaced and to be retested.
ST4	St. Anthony HS/MS	Pool	Drinking Fountain (South)	22.2*	Fixture disconnected from service.
ST65	St. Anthony HS/MS	Room 313	Sink	23.6*	Fixture disconnected from service.

ppb – parts per billion

*Exceeds the standard

RECOMMENDATIONS

IEA recommends implementing one of the following treatment options for each fixture with lead levels exceeding the EPA action level of 20 ppb. These recommendations should also be considered for fixtures with lead levels approaching 20 ppb.

- Install a drinking water treatment unit certified to NSF/ANSI 53 for lead reduction:
<http://info.nsf.org/Certified/DWTU/Listings.asp?TradeName=&Standard=053&ProductType=&PlantState=&PlantCountry=&PlantRegion=&submit3=Search&hdModlStd=ModlStd>.
- Conduct flush testing in accordance with EPA or MDH guidelines to determine if flushing will reduce lead levels. If results indicate that flushing will reduce lead to acceptable levels, implement a flushing program which includes documentation of daily flushing and periodic program review.
- Replace fixture with a "lead-free" fixture certified to NSF/ANSI 372 or NSF/ANSI 61-G. The *Reduction of Lead in Drinking Water Act* redefines "lead-free" as "not more than a weighted average of 0.25% lead when used with respect to wetted surfaces of pipes, pipe fittings, plumbing fittings, and fixtures." Effective January 4, 2014, drinking water system components sold or installed must adhere to this new requirement.
- Remove fixture from service by disconnecting it from the water supply.
- Post signs that the water is not potable and to notify staff of this.

In addition, IEA recommends that a copy of the district's Lead- in-Drinking Water Testing Report be made available to the public through the district's administrative offices.

GENERAL CONDITIONS

The analysis and opinions expressed in this report are based upon water testing at St. Anthony-New Brighton ISD #282. This report does not reflect variations in conditions that may occur. Actual conditions may vary and may not become evident without further assessment.

The report is prepared for the exclusive use of our client for specific application to the project discussed and has been prepared in accordance with generally accepted environmental, health and safety practices. Other than as provided in the preceding sentence and in our Proposal #5383 dated July 20, 2016, regarding lead-in-water sampling throughout the district, including the General Conditions attached thereto, no warranties are extended or made.

Please contact IEA if you would like assistance with any of the above recommendations or have questions regarding this report.

Sincerely,

Reviewed by,

IEA, Inc.



Brenda Fischer
Senior Project Manager
EH&S Division



Karen Weiblen
Senior Project Manager
EH&S Division

BF/wb 092316

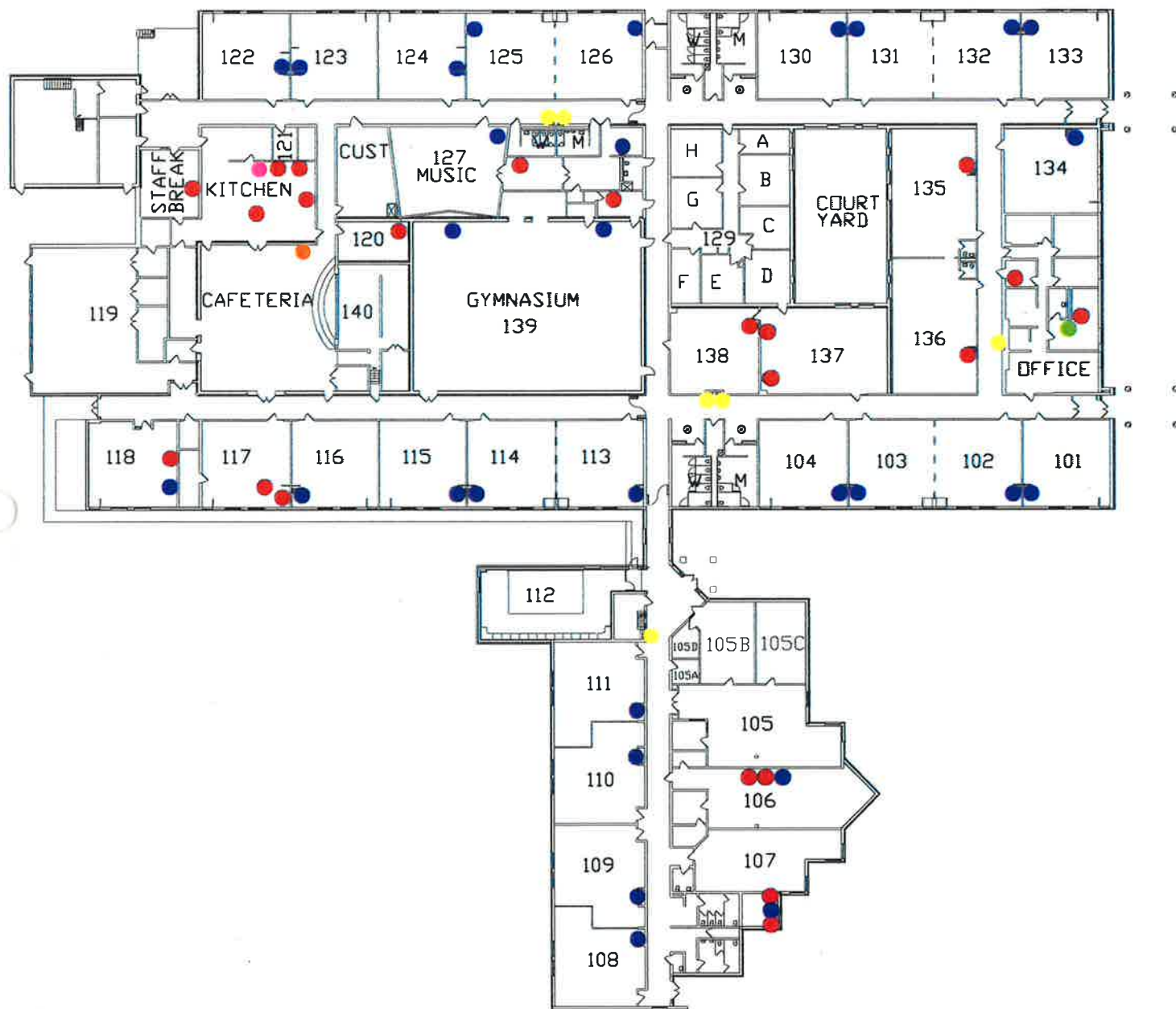
Enc.

Appendix A

Site Map/Drawing

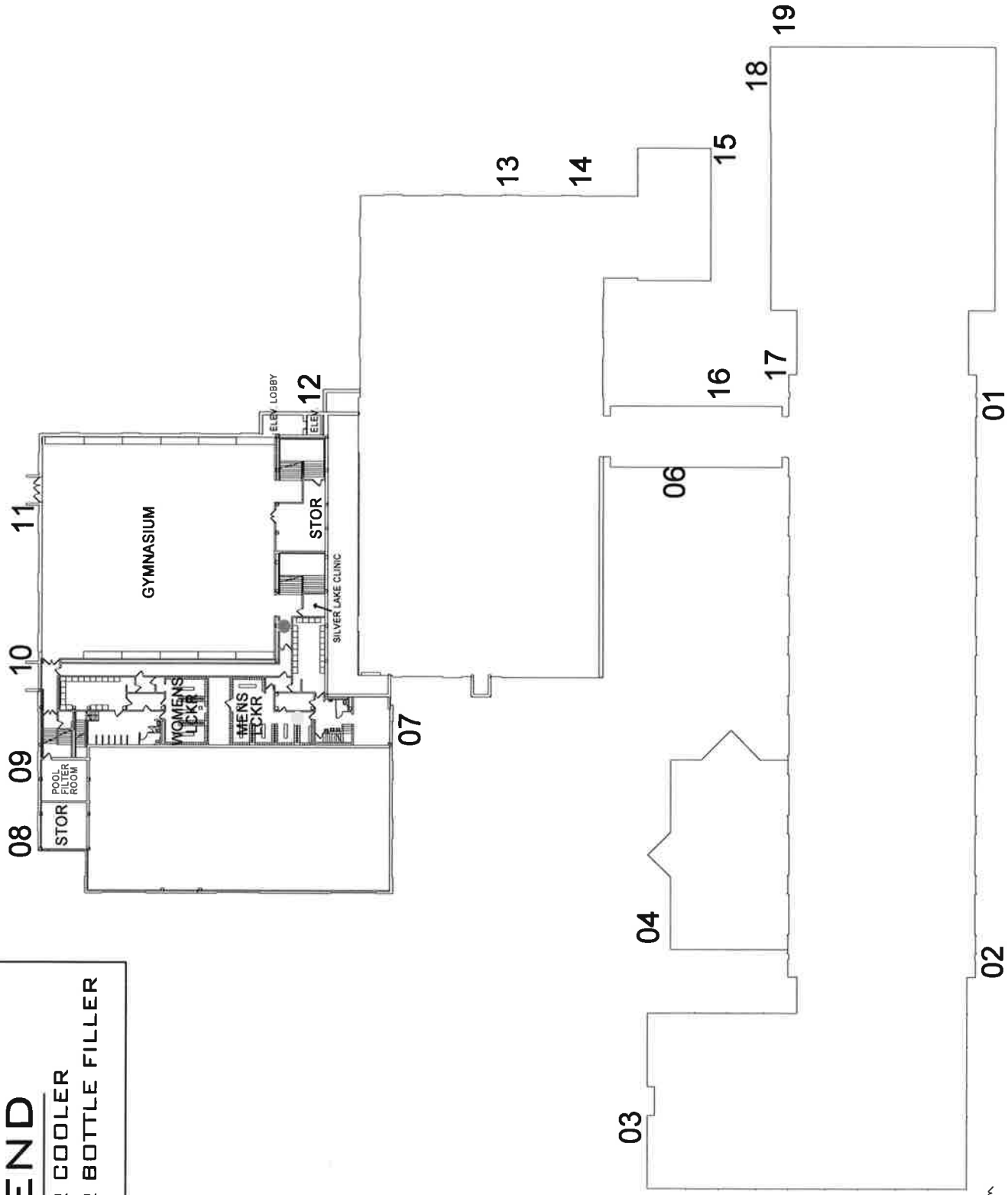
LEGEND

- WATER COOLER
- SINK
- KITCHEN SPRAYER
- FILTERED WATER
- DRINKING FOUNTAIN
- WATER BOTTLE FILLER



LEGEND

- WATER COOLER
- WATER BOTTLE FILLER

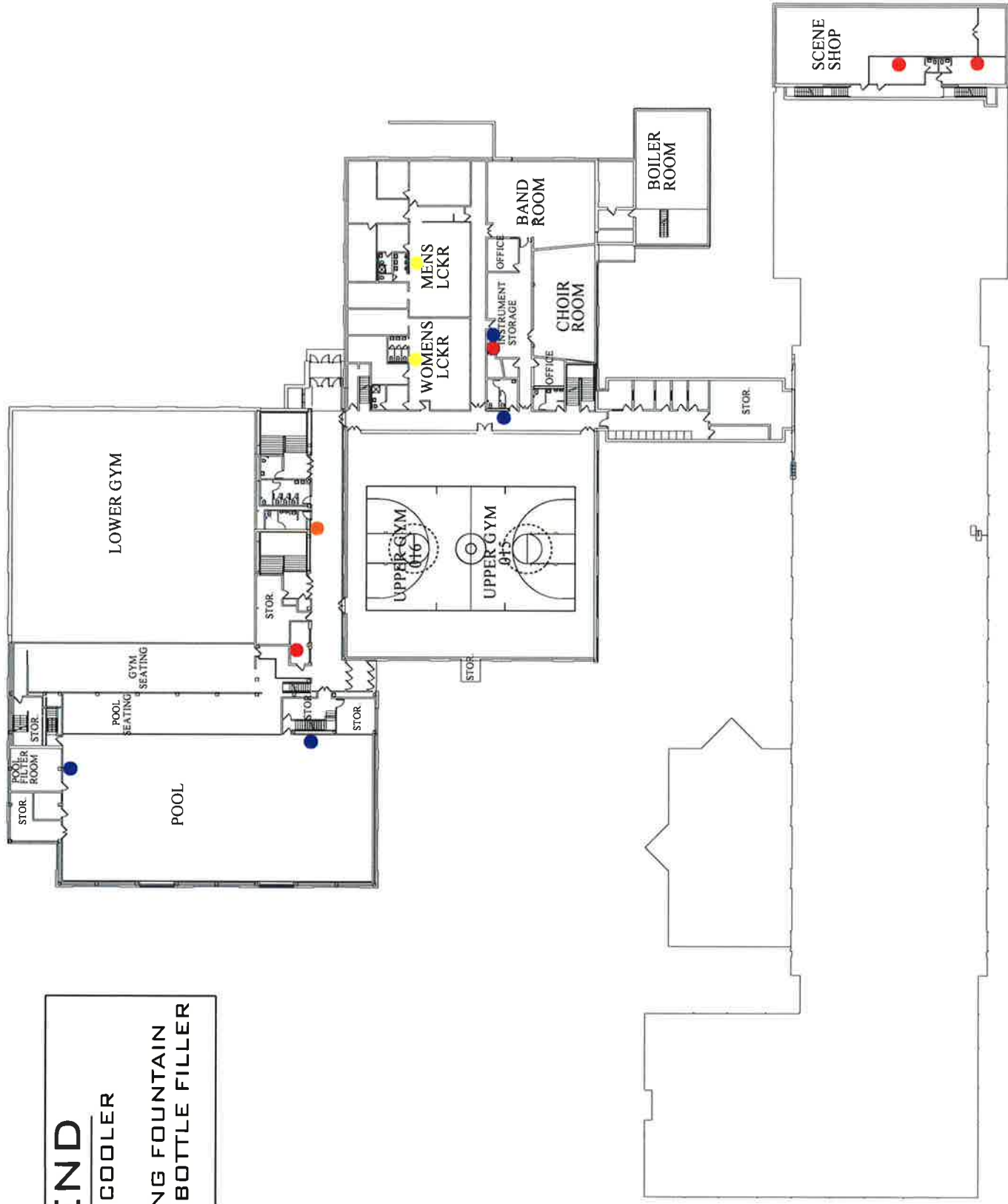


INSTITUTE FOR
ENVIRONMENTAL ASSESSMENT

9201 West Broadway Brooklyn Park, MN 55445
Tel: 763.315.7900 Toll Free: 800.233.9513
Fax: 763.315.7920

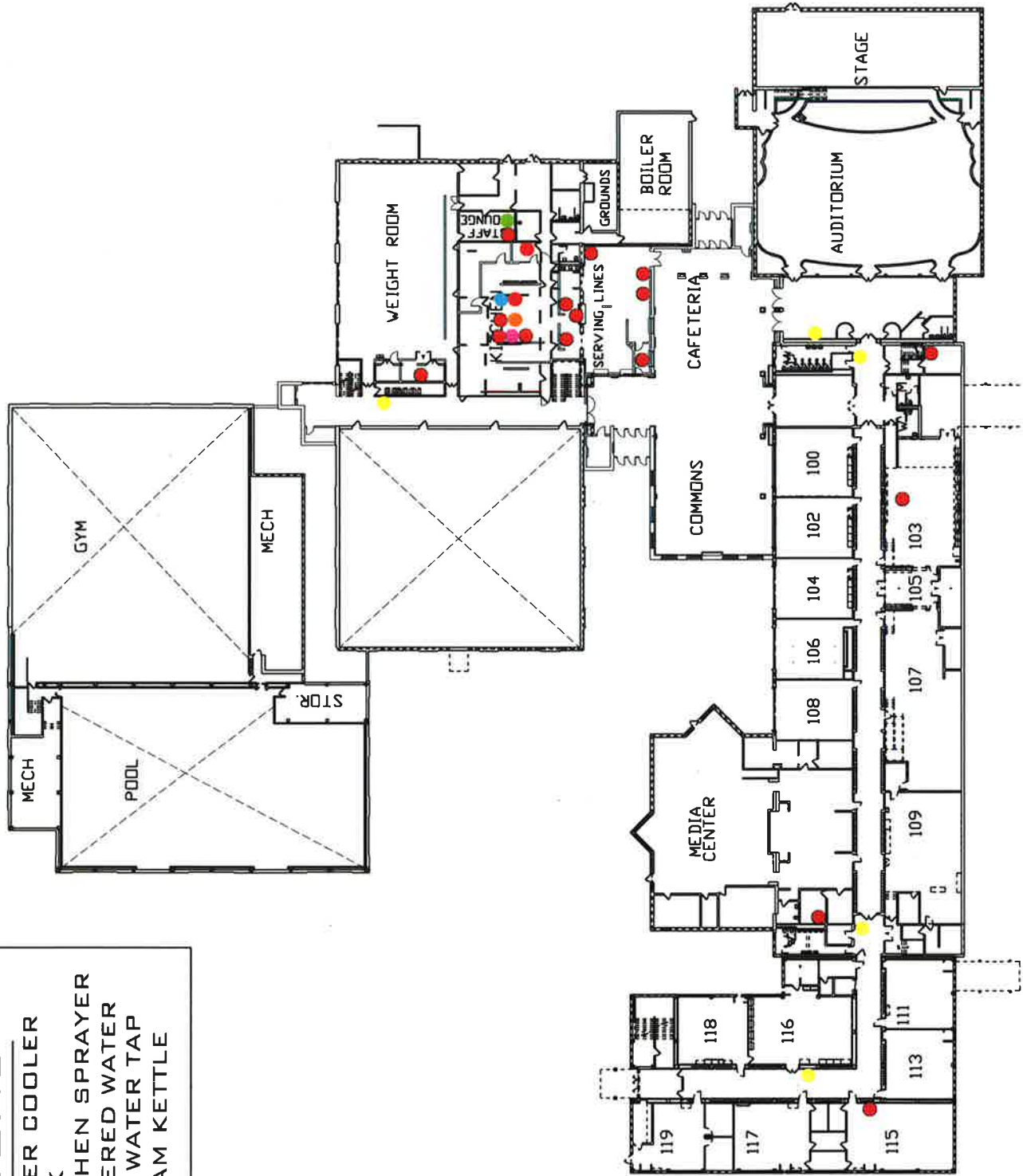
LEGEND

- WATER COOLER
- SINK
- DRINKING FOUNTAIN
- WATER BOTTLE FILLER



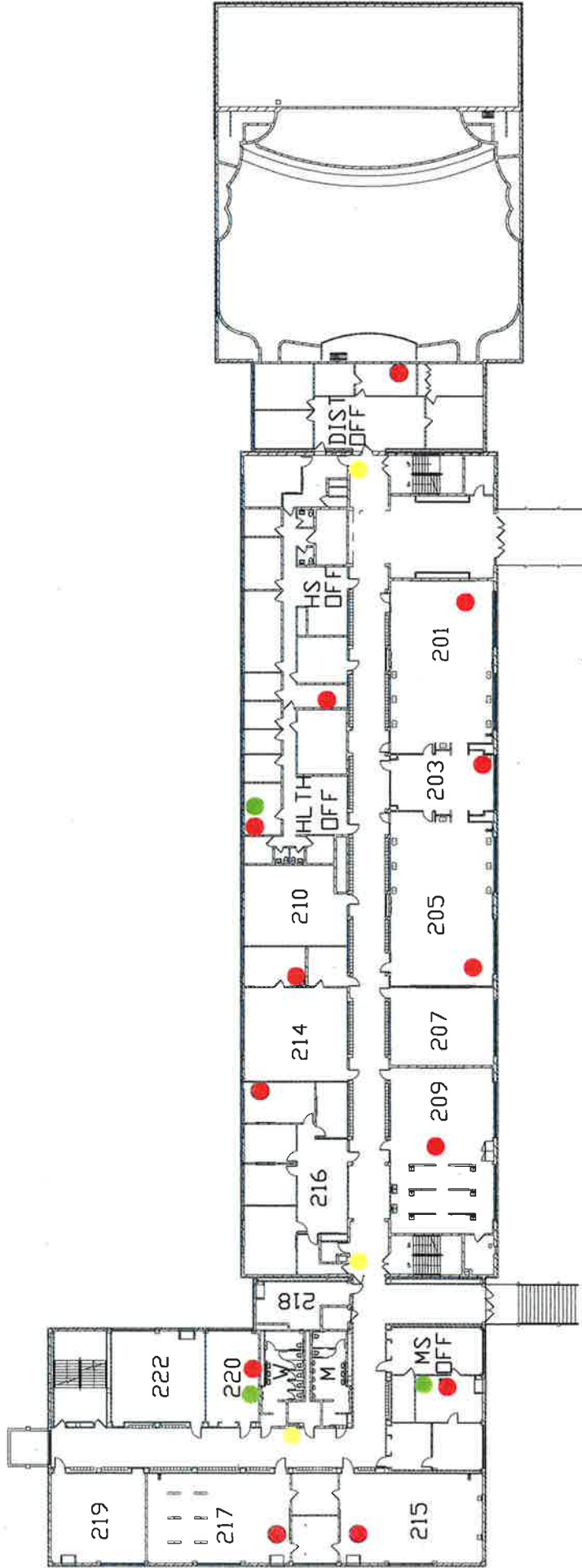
LEGEND

- WATER COOLER
- SINK
- KITCHEN SPRAYER
- FILTERED WATER
- HOT WATER TAP
- STEAM KETTLE



LEGEND

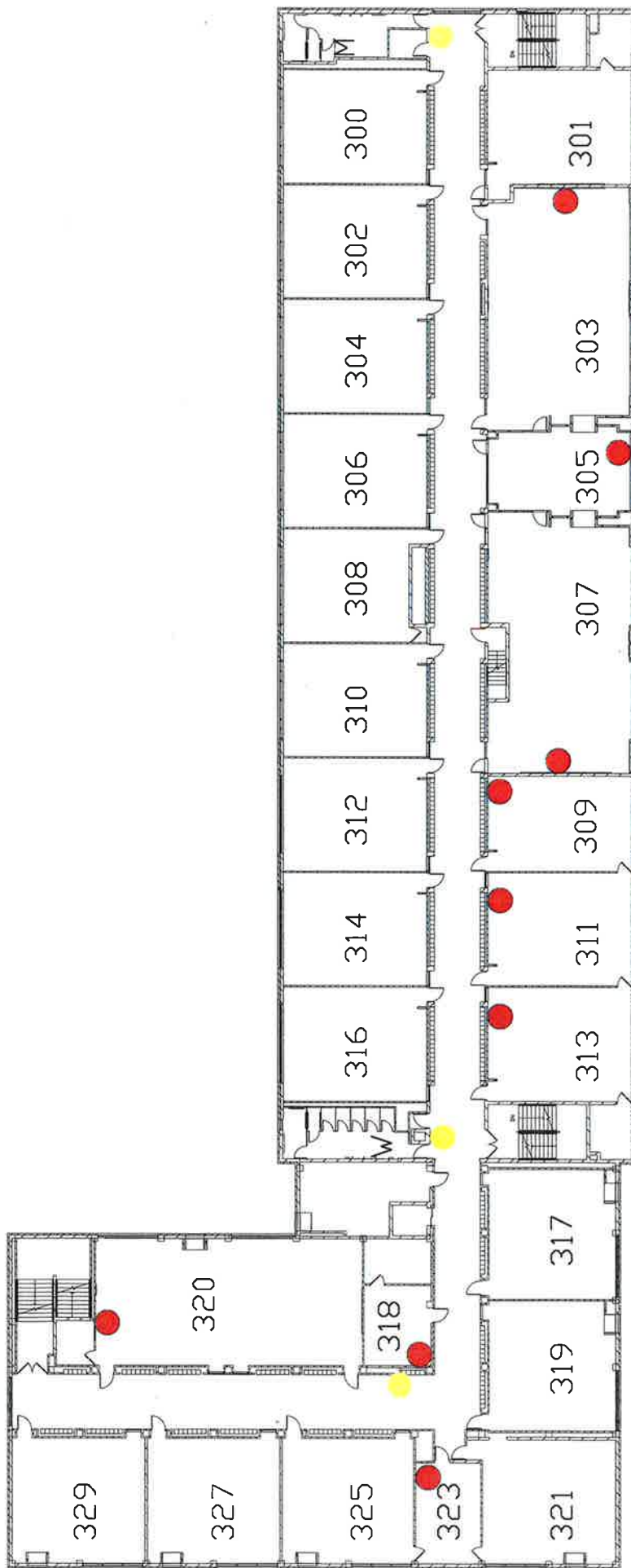
 WATER COOLER
 SINK
 FILTERED WATER



LEGEND

WATER COOLER

SINK



ST. ANTHONY VILLAGE HIGH SCHOOL

LEAD IN WATER | THIRD LEVEL FLOOR PLAN | ST. ANTHONY / SD #282 | AUGUST 2016

9201 West Broadway Brooklyn Park, MN 55445

Tel: 763.315.7900 Toll Free: 800.233.9513

Fax: 763.315.7920

INSTITUTE FOR
ENVIRONMENTAL ASSESSMENT



Appendix B

Laboratory Testing Report & Chain of Custody (COC)



MINNESOTA VALLEY TESTING LABORATORIES, INC.

1126 North Front St. ~ New Ulm, MN 56073 ~ 800-782-3557 ~ Fax 507-359-2890
2 North German St. ~ New Ulm, MN 56073 ~ 800-782-3557 ~ Fax 507-359-2890
2616 East Broadway Ave. ~ Bismarck, ND 58501 ~ 800-279-6885 ~ Fax 701-258-9724
1201 Lincoln Hwy. ~ Nevada, IA 50201 ~ 800-362-0855 ~ Fax 515-382-3885
www.mvttl.com



Report Date: 22 Aug 2016

HEIDI SOLBERG
IEA/BROOKLYN PARK
9201 W BDWY STE #600
BROOKLYN PARK MN 55445


Work Order #: 12-12377
Account #: 002190
Purchase Order #: 201610707

Date Received: 11 Aug 2016
Date Sampled: 11 Aug 2016
Temperature at Receipt: 23.2C

PROJECT NAME: COMMUNITY SERVICES
PROJECT NUMBER: 201610707

LAB NUMBER	SAMPLE DESCRIPTION	LEAD RESULTS	MCL	DATE ANALYZED	ANALYST
16-A40452	CS1 LOBBY RESTROOM AREA N WC	< 0.5 ug/L	15.0	20 Aug 16	RMV
16-A40453	CS2 LOBBY RESTROOM AREA S WC	< 0.5 ug/L	15.0	20 Aug 16	RMV
16-A40454	CS3 KITCHEN SNK	0.66 ug/L	15.0	20 Aug 16	RMV
16-A40455	CS4 MAIN HALL WC	< 0.5 ug/L	15.0	20 Aug 16	RMV
16-A40456	CS5 OUTSIDE OF GYM WC	< 0.5 ug/L	15.0	20 Aug 16	RMV
16-A40457	CS6 CS9 SNK	1.47 ug/L	15.0	20 Aug 16	RMV
16-A40458	CS7 CS12 SNK	0.86 ug/L	15.0	20 Aug 16	RMV
16-A40459	CS8 CS15 SNK	0.61 ug/L	15.0	20 Aug 16	RMV
16-A40460	CS9 CS16 SNK	0.70 ug/L	15.0	20 Aug 16	RMV
16-A40461	CS10 CS17 SNK	1.34 ug/L	15.0	20 Aug 16	RMV
16-A40462	CS11 CS18 SNK	< 0.5 ug/L	15.0	20 Aug 16	RMV

Approved by:


Dan O'Connell, Chemistry Laboratory Manager New Ulm, MN

Analyses performed under our Minnesota Department of Health Accreditation conform to the current TNI standards.

The reporting limit was elevated for any analyte requiring a dilution as coded below:

@ = Due to sample matrix

= Due to concentration of other analytes

! = Due to sample quantity

+ = Due to internal standard response

CERTIFICATION: MN LAB # 027-015-125 WI LAB # 999447680 ND MICRO # 1013-M ND WW/DW # R-040

MVTL guarantees the accuracy of the analysis done on the sample submitted for testing. It is not possible for MVTL to guarantee that a test result obtained on a particular sample will be the same on any other sample unless all conditions affecting the sample are the same, including sampling by MVTL. As a mutual protection to clients, the public and ourselves, all reports are submitted as the confidential property of clients, and authorization for publication of statements, conclusions or extracts from or regarding our reports is reserved pending our written approval.



Original - Analytical Lab
Copy - Client File
Copy - IEA Lab



MINNESOTA VALLEY TESTING LABORATORIES, INC.

1126 North Front St. ~ New Ulm, MN 56073 ~ 800-782-3557 ~ Fax 507-359-2890
2 North German St. ~ New Ulm, MN 56073 ~ 800-782-3557 ~ Fax 507-359-2890
2616 East Broadway Ave. ~ Bismarck, ND 58501 ~ 800-279-6885 ~ Fax 701-258-9724
1201 Lincoln Hwy. ~ Nevada, IA 50201 ~ 800-362-0855 ~ Fax 515-382-3885
www.mvtl.com



Report Date: 26 Aug 2016

HEIDI SOLBERG
IEA/BROOKLYN PARK
9201 W BDWY STE #600
BROOKLYN PARK MN 55445

Work Order #: 12-12452
Account #: 002190
Purchase Order #: 201610707

Date Received: 11 Aug 2016
Date Sampled: 11 Aug 2016
Temperature at Receipt: 23.8C

AUG 31 2016

PROJECT NAME: WILSHIRE PARK ELEM.
PROJECT NUMBER: 201610707

LAB NUMBER	SAMPLE DESCRIPTION	LEAD RESULTS	MCL	DATE ANALYZED	ANALYST
16-A40785	WP1 STAFF LOUNGE SINK	< 0.5 ug/L	15.0	20 Aug 16	RMV
16-A40786	WP2 KITCHEN SPRAYER	30.2 ug/L	15.0	20 Aug 16	RMV
16-A40787	WP3 KITCHEN SOUTH SINK	12.6 ug/L	15.0	20 Aug 16	RMV
16-A40788	WP4 KITCHEN EAST SINK	2.09 ug/L	15.0	20 Aug 16	RMV
16-A40789	WP5 KITCHEN NORTH SINK WEST	249 ~ ug/L	15.0	24 Aug 16	RMV
~Sample diluted due to result above calibration or linear range.					
16-A40790	WP6 KITCHEN NORTH SINK EAST	19.1 ug/L	15.0	20 Aug 16	RMV
16-A40791	WP7 CAFETERIA WATER BOTTLE FILLER	< 0.5 ug/L	15.0	20 Aug 16	RMV
16-A40792	WP8 ROOM 120 SINK	77.2 ug/L	15.0	20 Aug 16	RMV
16-A40793	WP9 ROOM 122 SINK	5.25 ug/L	15.0	20 Aug 16	RMV
16-A40794	WP10 ROOM 123 DF	2.28 ug/L	15.0	23 Aug 16	RMV
16-A40795	WP11 ROOM 124 DF	5.19 ug/L	15.0	20 Aug 16	RMV
16-A40796	WP12 ROOM 125 DF	7.78 ug/L	15.0	23 Aug 16	RMV
16-A40797	WP13 ROOM 126 DF	15.9 ug/L	15.0	20 Aug 16	RMV
16-A40798	WP14 ROOM 127 DF	4.20 ug/L	15.0	20 Aug 16	RMV
16-A40799	WP15 ROOM EAST OF 127 SINK	43.1 ug/L	15.0	20 Aug 16	RMV

Approved by:

Dan O'Connell, Chemistry Laboratory Manager New Ulm, MN

Analyses performed under our Minnesota Department of Health Accreditation conform to the current TNI standards.

The reporting limit was elevated for any analyte requiring a dilution as coded below:

@ = Due to sample matrix

= Due to concentration of other analytes

! = Due to sample quantity

+ = Due to internal standard response

CERTIFICATION: MN LAB # 027-015-125 WJ LAB # 999447680 ND MICRO # 1013-M ND WW/DW # R-040

MVTL guarantees the accuracy of the analysis done on the sample submitted for testing. It is not possible for MVTL to guarantee that a test result obtained on a particular sample will be the same on any other sample unless all conditions affecting the sample are the same, including sampling by MVTL. As a mutual protection to clients, the public and ourselves, all reports are submitted as the confidential property of clients, and authorization for publication of statements, conclusions or extracts from or regarding our reports is reserved pending our written approval.



MINNESOTA VALLEY TESTING LABORATORIES, INC.

1126 North Front St. ~ New Ulm, MN 56073 ~ 800-782-3557 ~ Fax 507-359-2890
 2 North German St. ~ New Ulm, MN 56073 ~ 800-782-3557 ~ Fax 507-359-2890
 2616 East Broadway Ave. ~ Bismarck, ND 58501 ~ 800-279-6885 ~ Fax 701-258-9724
 1201 Lincoln Hwy. ~ Nevada, IA 50201 ~ 800-362-0855 ~ Fax 515-382-3885
 www.mvttl.com



Report Date: 26 Aug 2016

HEIDI SOLBERG
 IEA/BROOKLYN PARK
 9201 W BDWY STE #600
 BROOKLYN PARK MN 55445

Work Order #: 12-12452
 Account #: 002190
 Purchase Order #: 201610707

Date Received: 11 Aug 2016
 Date Sampled: 11 Aug 2016
 Temperature at Receipt: 23.8C

PROJECT NAME: WILSHIRE PARK ELEM.
 PROJECT NUMBER: 201610707

LAB NUMBER	SAMPLE DESCRIPTION	LEAD RESULTS	MCL	DATE ANALYZED	ANALYST
16-A40800	WP16 HALL EAST OF ROOM 127 WC WEST	1.54 ug/L	15.0	20 Aug 16	RMV
16-A40801	WP17 HALL EAST OF ROOM 127 WC EAST	1.23 ug/L	15.0	20 Aug 16	RMV
16-A40802	WP18 ROOM 128 SINK	9.03 ug/L	15.0	20 Aug 16	RMV
16-A40803	WP19 GYM OFFICE SINK	7.39 ug/L	15.0	20 Aug 16	RMV
16-A40804	WP22 ROOM 130 DF	2.09 ug/L	15.0	20 Aug 16	RMV
16-A40805	WP23 ROOM 131 DF	2.87 ug/L	15.0	20 Aug 16	RMV
16-A40806	WP24 ROOM 132 DF	3.12 ug/L	15.0	20 Aug 16	RMV
16-A40807	WP25 ROOM 133 DF	2.91 ug/L	15.0	20 Aug 16	RMV
16-A40808	WP26 ROOM 134 DF	3.24 ug/L	15.0	20 Aug 16	RMV
16-A40809	WP27 ROOM 135 SINK	13.1 ug/L	15.0	20 Aug 16	RMV
16-A40810	WP28 ROOM 100A SINK	196 ~ ug/L	15.0	24 Aug 16	RMV
~Sample diluted due to result above calibration or linear range.					
16-A40811	WP29 ROOM 136 SINK	15.6 ug/L	15.0	20 Aug 16	RMV
16-A40812	WP30 HALL OUTSIDE MAIN OFFICE WC	3.18 ug/L	15.0	20 Aug 16	RMV
16-A40813	WP31 NURSES OFFICE SINK	7.26 ug/L	15.0	20 Aug 16	RMV

Approved by:

Dan O'Connell, Chemistry Laboratory Manager New Ulm, MN

Analyses performed under our Minnesota Department of Health Accreditation conform to the current TNI standards.

The reporting limit was elevated for any analyte requiring a dilution as coded below:

@ = Due to sample matrix # = Due to concentration of other analytes
 ! = Due to sample quantity + = Due to internal standard response

CERTIFICATION: MN LAB # 027-015-125 WI LAB # 999447680 ND MICRO # 1013-M ND WW/DW # R-040

MVTL guarantees the accuracy of the analysis done on the sample submitted for testing. It is not possible for MVTL to guarantee that a test result obtained on a particular sample will be the same on any other sample unless all conditions affecting the sample are the same, including sampling by MVTL. As a mutual protection to clients, the public and ourselves, all reports are submitted as the confidential property of clients, and authorization for publication of statements, conclusions or extracts from or regarding our reports is reserved pending our written approval.



MINNESOTA VALLEY TESTING LABORATORIES, INC.

1126 North Front St. ~ New Ulm, MN 56073 ~ 800-782-3557 ~ Fax 507-359-2890
2 North German St. ~ New Ulm, MN 56073 ~ 800-782-3557 ~ Fax 507-359-2890
2616 East Broadway Ave. ~ Bismarck, ND 58501 ~ 800-279-6885 ~ Fax 701-258-9724
1201 Lincoln Hwy. ~ Nevada, IA 50201 ~ 800-362-0855 ~ Fax 515-382-3885
www.mvttl.com



Report Date: 26 Aug 2016

HEIDI SOLBERG
IEA/BROOKLYN PARK
9201 W BDWY STE #600
BROOKLYN PARK MN 55445

Work Order #: 12-12452
Account #: 002190
Purchase Order #: 201610707

Date Received: 11 Aug 2016
Date Sampled: 11 Aug 2016
Temperature at Receipt: 23.8C

PROJECT NAME: WILSHIRE PARK ELEM.
PROJECT NUMBER: 201610707

LAB NUMBER	SAMPLE DESCRIPTION	LEAD RESULTS	MCL	DATE ANALYZED	ANALYST
16-A40814	WP32 NURSES OFFICE FILTERED WATER	< 0.5 ug/L	15.0	20 Aug 16	RMV
16-A40815	WP33 ROOM 101 DF	18.4 ug/L	15.0	20 Aug 16	RMV
16-A40816	WP34 ROOM 102 DF	36.6 ug/L	15.0	23 Aug 16	RMV
16-A40817	WP35 ROOM 103 DF	3.00 ug/L	15.0	20 Aug 16	RMV
16-A40818	WP36 ROOM 104 DF	5.97 ug/L	15.0	20 Aug 16	RMV
16-A40819	WP37 ROOM 137 SINK NORTH	26.7 ug/L	15.0	20 Aug 16	RMV
16-A40820	WP38 ROOM 137 SINK SOUTH	14.9 ug/L	15.0	20 Aug 16	RMV
16-A40821	WP39 ROOM 138 SINK	20.4 ug/L	15.0	20 Aug 16	RMV
16-A40822	WP40 HALL SOUTH OF ROOM 138 WC WEST	1.33 ug/L	15.0	20 Aug 16	RMV
16-A40823	WP41 HALL SOUTH OF ROOM 138 WC EAST	2.12 ug/L	15.0	20 Aug 16	RMV
16-A40824	WP42 ROOM 113 DF	2.07 ug/L	15.0	20 Aug 16	RMV
16-A40825	WP43 ROOM 114 DF	2.01 ug/L	15.0	20 Aug 16	RMV
16-A40826	WP44 ROOM 115 DF	3.45 ug/L	15.0	20 Aug 16	RMV
16-A40827	WP45 ROOM 116 DF	4.09 ug/L	15.0	20 Aug 16	RMV

Approved by:

 
Dan O'Connell, Chemistry Laboratory Manager New Ulm, MN

Analyses performed under our Minnesota Department of Health Accreditation conform to the current TNI standards.

The reporting limit was elevated for any analyte requiring a dilution as coded below:

@ = Due to sample matrix

= Due to concentration of other analytes

! = Due to sample quantity

+ = Due to internal standard response

CERTIFICATION: MN LAB # 027-015-125 WI LAB # 999447680 ND MICRO # 1013-M ND WW/DW # R-040

MVTL guarantees the accuracy of the analysis done on the sample submitted for testing. It is not possible for MVTL to guarantee that a test result obtained on a particular sample will be the same on any other sample unless all conditions affecting the sample are the same, including sampling by MVTL. As a mutual protection to clients, the public and ourselves, all reports are submitted as the confidential property of clients, and authorization for publication of statements, conclusions or extracts from or regarding our reports is reserved pending our written approval.



MINNESOTA VALLEY TESTING LABORATORIES, INC.

1126 North Front St. ~ New Ulm, MN 56073 ~ 800-782-3557 ~ Fax 507-359-2890
2 North German St. ~ New Ulm, MN 56073 ~ 800-782-3557 ~ Fax 507-359-2890
2616 East Broadway Ave. ~ Bismarck, ND 58501 ~ 800-279-6885 ~ Fax 701-258-9724
1201 Lincoln Hwy. ~ Nevada, IA 50201 ~ 800-362-0855 ~ Fax 515-382-3885
www.mvttl.com



Report Date: 26 Aug 2016

HEIDI SOLBERG
IEA/BROOKLYN PARK
9201 W BDWY STE #600
BROOKLYN PARK MN 55445

Work Order #: 12-12452
Account #: 002190
Purchase Order #: 201610707

Date Received: 11 Aug 2016
Date Sampled: 11 Aug 2016
Temperature at Receipt: 23.8C

PROJECT NAME: WILSHIRE PARK ELEM.
PROJECT NUMBER: 201610707

LAB NUMBER	SAMPLE DESCRIPTION	LEAD RESULTS	MCL	DATE ANALYZED	ANALYST
16-A40828	WP46 ROOM 117 SINK ISLAND	2.84 ug/L	15.0	20 Aug 16	RMV
16-A40829	WP47 ROOM 117 SINK WALL	34.3 ug/L	15.0	20 Aug 16	RMV
16-A40830	WP48 ROOM 118 DF	5.48 ug/L	15.0	20 Aug 16	RMV
16-A40831	WP49 ROOM 118 SINK MID-EAST	32.8 ug/L	15.0	20 Aug 16	RMV
16-A40832	WP50 HALL OUTSIDE ROOM 111 WC	< 0.5 ug/L	15.0	20 Aug 16	RMV
16-A40833	WP51 ROOM 111 DF	11.5 ug/L	15.0	20 Aug 16	RMV
16-A40834	WP52 ROOM 110 DF	3.85 ug/L	15.0	20 Aug 16	RMV
16-A40835	WP53 ROOM 109 DF	20.8 ug/L	15.0	20 Aug 16	RMV
16-A40836	WP54 ROOM 108 DF	5.47 ug/L	15.0	20 Aug 16	RMV
16-A40837	WP55 ROOM 107 DF	0.58 ug/L	15.0	20 Aug 16	RMV
16-A40838	WP56 ROOM 107 SINK NORTH	3.79 ug/L	15.0	20 Aug 16	RMV
16-A40839	WP57 ROOM 107 SINK SOUTH	1.24 ug/L	15.0	20 Aug 16	RMV
16-A40840	WP58 ROOM 106 SINK WEST	1.64 ug/L	15.0	20 Aug 16	RMV
16-A40841	WP59 ROOM 106 SINK EAST	1.91 ug/L	15.0	20 Aug 16	RMV
16-A40842	WP60 ROOM 106 DF	1.28 ug/L	15.0	23 Aug 16	RMV

Approved by:


Dan O'Connell, Chemistry Laboratory Manager New Ulm, MN

Analyses performed under our Minnesota Department of Health Accreditation conform to the current TNI standards.

The reporting limit was elevated for any analyte requiring a dilution as coded below:

@ = Due to sample matrix

= Due to concentration of other analytes

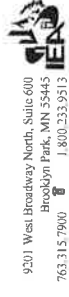
! = Due to sample quantity

+ = Due to internal standard response

CERTIFICATION: MN LAB # 027-015-125 WI LAB # 999447680 ND MICRO # 1013-M ND WW/DW # R-040

MVTL guarantees the accuracy of the analysis done on the sample submitted for testing. It is not possible for MVTL to guarantee that a test result obtained on a particular sample will be the same on any other sample unless all conditions affecting the sample are the same, including sampling by MVTL. As a mutual protection to clients, the public and ourselves, all reports are submitted as the confidential property of clients, and authorization for publication of statements, conclusions or extracts from or regarding our reports is reserved pending our written approval.

Chain of Custody



Client Name		St. Anthony-New Brighton ISD #282		Building Name		Wilshire Park Elementary		Analytical Lab		MVTL	
Contact Name				Project #		201610707		Project Name		2016 Lead in Water Testing	
Phone #				IEA Fax #		763-315-7970		Written Sample Results To		Michelle Johnson	
Other Information											
Sampled By		Kushani Manthrige		Date		8/11/2016		Time		Date & Time	
Shipped By		Carole Nelson		Date		8/11/2016		Time		Notes	
Received By				Date				Time		Temperature	

Lab Number	Sample Number	Sample Location	Sample Type			Date Sampled	Time Sampled	Volume/ Bottle Type	Analysis Required	Comments & Observations
			Water	Soil	Other					
	WP1	Staff Lounge - Sink	X			8/11/2016		500mL unpreserved	Lead	
	WP2	Kitchen - Sprayer	X			8/11/2016		500mL unpreserved	Lead	
	WP3	Kitchen - South Sink	X			8/11/2016		500mL unpreserved	Lead	
	WP4	Kitchen - East Sink	X			8/11/2016		500mL unpreserved	Lead	
	WP5	Kitchen - North Sink West	X			8/11/2016		500mL unpreserved	Lead	
	WP6	Kitchen - North Sink East	X			8/11/2016		500mL unpreserved	Lead	
	WP7	Cafeteria - Water Bottle Filler	X			8/11/2016		500mL unpreserved	Lead	
	WP8	Room 120 - Sink	X			8/11/2016		500mL unpreserved	Lead	
	WP9	Room 122 - Sink	X			8/11/2016		500mL unpreserved	Lead	
	WP10	Room 123 - DF	X			8/11/2016		500mL unpreserved	Lead	
	WP11	Room 124 - DF	X			8/11/2016		500mL unpreserved	Lead	
	WP12	Room 125 - DF	X			8/11/2016		500mL unpreserved	Lead	
	WP13	Room 126 - DF	X			8/11/2016		500mL unpreserved	Lead	
	WP14	Room 127 - DF	X			8/11/2016		500mL unpreserved	Lead	
	WP15	Room East of 127 - Sink	X			8/11/2016		500mL unpreserved	Lead	
	WP16	Hall East of Room 127 - WC (West)	X			8/11/2016		500mL unpreserved	Lead	
	WP17	Hall East of Room 127 - WC (East)	X			8/11/2016		500mL unpreserved	Lead	
	WP18	Room 128 - Sink	X			8/11/2016		500mL unpreserved	Lead	
	WP19	Gym Office - Sink	X			8/11/2016		500mL unpreserved	Lead	
	WP20	Gymnasium - DF (West)	X			8/11/2016		500mL unpreserved	Lead	
	WP21	Gymnasium - DF (East)	X			8/11/2016		500mL unpreserved	Lead	
	WP22	Room 130 - DF	X			8/11/2016		500mL unpreserved	Lead	
	WP23	Room 131 - DF	X			8/11/2016		500mL unpreserved	Lead	
	WP24	Room 132 - DF	X			8/11/2016		500mL unpreserved	Lead	
	WP25	Room 133 - DF	X			8/11/2016		500mL unpreserved	Lead	
	WP26	Room 134 - DF	X			8/11/2016		500mL unpreserved	Lead	
	WP27	Room 135 - Sink	X			8/11/2016		500mL unpreserved	Lead	
	WP28	Room 100A - Sink	X			8/11/2016		500mL unpreserved	Lead	
	WP29	Room 136 - Sink	X			8/11/2016		500mL unpreserved	Lead	
	WP30	Hall Outside Main Office - WC	X			8/11/2016		500mL unpreserved	Lead	
	WP31	Nurses Office - Sink	X			8/11/2016		500mL unpreserved	Lead	

Original - Analytical Lab
Copy - Client File
Copy - IEA Lab



MINNESOTA VALLEY TESTING LABORATORIES, INC.

1126 North Front St. ~ New Ulm, MN 56073 ~ 800-782-3557 ~ Fax 507-359-2890
2 North German St. ~ New Ulm, MN 56073 ~ 800-782-3557 ~ Fax 507-359-2890
2616 East Broadway Ave. ~ Bismarck, ND 58501 ~ 800-279-6885 ~ Fax 701-258-9724
1201 Lincoln Hwy. ~ Nevada, IA 50201 ~ 800-362-0855 ~ Fax 515-382-3885
www.mvtl.com



Report Date: 26 Aug 2016

HEIDI SOLBERG
IEA/BROOKLYN PARK
9201 W BDWY STE #600
BROOKLYN PARK MN 55445

Work Order #: 12-12454
Account #: 002190
Purchase Order #: 201610707

Date Received: 11 Aug 2016
Date Sampled: 11 Aug 2016
Temperature at Receipt: 23.8C

AUG 31 2016

PROJECT NAME: ST ANTHONY HS & MIDDLE SCHOOL
PROJECT NUMBER: 201610707

LAB NUMBER	SAMPLE DESCRIPTION	LEAD RESULTS	MCL	DATE ANALYZED	ANALYST
16-A40844	ST8 LL BASEMENT-MENS LOCKER ROOM WC	< 0.5 ug/L	15.0	20 Aug 16	RMV
16-A40845	ST2 LL ATHLETICS-HALL OUTSIDE GYM WATER BF	< 0.5 ug/L	15.0	20 Aug 16	RMV
16-A40846	ST3 LL BASEMENT-POOL-DF-NORTH	16.4 ug/L	15.0	20 Aug 16	RMV
16-A40847	ST4 LL BASEMENT-POOL-DF-SOUTH	22.2 ug/L	15.0	20 Aug 16	RMV
16-A40848	ST5 LL BASEMENT-CONCESSIONS SINK	3.41 ug/L	15.0	20 Aug 16	RMV
16-A40849	ST6 LL BASEMENT-HALL OUTSIDE GYM WATER BF	< 0.5 ug/L	15.0	20 Aug 16	RMV
16-A40850	ST7 LL BASEMENT-WOMENS LOCKER ROOM WC	4.32 ug/L	15.0	20 Aug 16	RMV
16-A40851	ST9 LL BASEMENT-HALL OUTSIDE MUSIC DF	2.26 ug/L	15.0	20 Aug 16	RMV
16-A40852	ST10 LL BASEMENT-INSTRUMENT STOR. SINK	0.71 ug/L	15.0	20 Aug 16	RMV
16-A40853	ST11 LL BASEMENT-INSTRUMENT STOR. DF	1.26 ug/L	15.0	20 Aug 16	RMV
16-A40854	ST12 LL BASEMENT-SCENE SHOP SINK NORTH	3.84 ug/L	15.0	20 Aug 16	RMV
16-A40855	ST13 LL BASEMENT-SCENE SHOP SINK SOUTH	9.78 ug/L	15.0	20 Aug 16	RMV

Approved by:

Dan O'Connell
Dan O'Connell, Chemistry Laboratory Manager New Ulm, MN

Analyses performed under our Minnesota Department of Health Accreditation conform to the current TNI standards.

The reporting limit was elevated for any analyte requiring a dilution as coded below:

@ = Due to sample matrix

= Due to concentration of other analytes

! = Due to sample quantity

+ = Due to internal standard response

CERTIFICATION: MN LAB # 027-015-125 WI LAB # 999447680 ND MICRO # 1013-M ND WW/DW # R-040

MVT L guarantees the accuracy of the analysis done on the sample submitted for testing. It is not possible for MVT L to guarantee that a test result obtained on a particular sample will be the same on any other sample unless all conditions affecting the sample are the same, including sampling by MVT L. As a mutual protection to clients, the public and ourselves, all reports are submitted as the confidential property of clients, and authorization for publication of statements, conclusions or extracts from or regarding our reports is reserved pending our written approval.



MINNESOTA VALLEY TESTING LABORATORIES, INC.

1126 North Front St. ~ New Ulm, MN 56073 ~ 800-782-3557 ~ Fax 507-359-2890
2 North German St. ~ New Ulm, MN 56073 ~ 800-782-3557 ~ Fax 507-359-2890
2616 East Broadway Ave. ~ Bismarck, ND 58501 ~ 800-279-6885 ~ Fax 701-258-9724
1201 Lincoln Hwy. ~ Nevada, IA 50201 ~ 800-362-0855 ~ Fax 515-382-3885
www.mvttl.com



Report Date: 26 Aug 2016

HEIDI SOLBERG
IEA/BROOKLYN PARK
9201 W BDWY STE #600
BROOKLYN PARK MN 55445

Work Order #: 12-12454
Account #: 002190
Purchase Order #: 201610707

Date Received: 11 Aug 2016
Date Sampled: 11 Aug 2016
Temperature at Receipt: 23.8C

PROJECT NAME: ST ANTHONY HS & MIDDLE SCHOOL
PROJECT NUMBER: 201610707

LAB NUMBER	SAMPLE DESCRIPTION	LEAD RESULTS	MCL	DATE ANALYZED	ANALYST
16-A40856	ST14 HALL OUTSIDE WEIGHT ROOM WC	< 0.5 ug/L	15.0	20 Aug 16	RMV
16-A40857	ST15 WEIGHT ROOM STORAGE SINK	21.0 ug/L	15.0	23 Aug 16	RMV
16-A40858	ST16 STAFF LOUNGE BY LOADING DOCK SINK	1.12 ug/L	15.0	20 Aug 16	RMV
16-A40859	ST17 STAFF LOUNGE BY LOADING DOCK FILTERED WATER	< 0.5 ug/L	15.0	20 Aug 16	RMV
16-A40860	ST18 KITCHEN EAST WALL STEAM KETTLE	4.59 ug/L	15.0	20 Aug 16	RMV
16-A40861	ST19 KITCHEN EAST WALL SOUTH OF STEAM KETTLE SINK	2.19 ug/L	15.0	20 Aug 16	RMV
16-A40862	ST20 KITCHEN CENTER SINK	1.44 ug/L	15.0	20 Aug 16	RMV
16-A40863	ST21 KITCHEN CENTER HOT WATER TAP	< 0.5 ug/L	15.0	20 Aug 16	RMV
16-A40864	ST22 KITCHEN WEST WALL SINK NORTH	1.04 ug/L	15.0	20 Aug 16	RMV
16-A40865	ST23 KITCHEN WEST WALL SPRAYER	3.96 ug/L	15.0	20 Aug 16	RMV
16-A40866	ST24 KITCHEN WEST WALL SINK (SOUTH)	0.76 ug/L	15.0	20 Aug 16	RMV
16-A40867	ST25 KITCHEN SERVING AREA SINK	18.5 ug/L	15.0	20 Aug 16	RMV

Approved by:

Dan O'Connell, Chemistry Laboratory Manager New Ulm, MN

Analyses performed under our Minnesota Department of Health A2 accreditation conform to the current TNI standards.

The reporting limit was elevated for any analyte requiring a dilution as coded below:

@ = Due to sample matrix

! = Due to sample quantity

= Due to concentration of other analytes

+ = Due to internal standard response

CERTIFICATION: MN LAB # 027-015-125 WI LAB # 999447680 ND MICRO # 1013-M ND WW/DW # R-040

MVTL guarantees the accuracy of the analysis done on the sample submitted for testing. It is not possible for MVTL to guarantee that a test result obtained on a particular sample will be the same on any other sample unless all conditions affecting the sample are the same, including sampling by MVTL. As a mutual protection to clients, the public and ourselves, all reports are submitted as the confidential property of clients, and authorization for publication of statements, conclusions or extracts from or regarding our reports is reserved pending our written approval.



MINNESOTA VALLEY TESTING LABORATORIES, INC.

1126 North Front St. ~ New Ulm, MN 56073 ~ 800-782-3557 ~ Fax 507-359-2890
2 North German St. ~ New Ulm, MN 56073 ~ 800-782-3557 ~ Fax 507-359-2890
2616 East Broadway Ave. ~ Bismarck, ND 58501 ~ 800-279-6885 ~ Fax 701-258-9724
1201 Lincoln Hwy. ~ Nevada, IA 50201 ~ 800-362-0855 ~ Fax 515-382-3885
www.mvtl.com



Report Date: 26 Aug 2016

HEIDI SOLBERG
IEA/BROOKLYN PARK
9201 W BDWY STE #600
BROOKLYN PARK MN 55445

Work Order #: 12-12454
Account #: 002190
Purchase Order #: 201610707
Date Received: 11 Aug 2016
Date Sampled: 11 Aug 2016
Temperature at Receipt: 23.8C

PROJECT NAME: ST ANTHONY HS & MIDDLE SCHOOL
PROJECT NUMBER: 201610707

LAB NUMBER	SAMPLE DESCRIPTION	LEAD RESULTS	MCL	DATE ANALYZED	ANALYST
	NE CORNER				
16-A40868	ST26 KITCHEN SERVING AREA S WALL SINK WEST	1.00 ug/L	15.0	20 Aug 16	RMV
16-A40869	ST27 KITCHEN SERVING AREA S WALL SINK MID	2.50 ug/L	15.0	20 Aug 16	RMV
16-A40870	ST28 KITCHEN SERVING AREA S WALL SINK EAST	15.2 ug/L	15.0	20 Aug 16	RMV
16-A40871	ST29 AREA S OF KITCHEN N WALL SINK EAST	4.19 ug/L	15.0	20 Aug 16	RMV
16-A40872	ST30 AREA S OF KITCHEN N WALL SINK WEST	3.99 ug/L	15.0	20 Aug 16	RMV
16-A40873	ST31 AREA S OF KITCHEN S WALL SINK	1.97 ug/L	15.0	20 Aug 16	RMV
16-A40874	ST32 HALL OUTSIDE AUDITORIUM WC	0.53 ug/L	15.0	20 Aug 16	RMV
16-A40875	ST33 1ST FLOOR HALL EAST BY RESTROOMS WC	0.52 ug/L	15.0	20 Aug 16	RMV
16-A40876	ST34 ROOM EAST OF ROOM 103 SINK BY STAIRWELL	4.48 ug/L	15.0	20 Aug 16	RMV
16-A40877	ST35 ROOM 103 TEACHERS STATION SINK	13.8 ug/L	15.0	20 Aug 16	RMV

Approved by:

Dan O'Connell, Chemistry Laboratory Manager New Ulm, MN

Analyses performed under our Minnesota Department of Health Accreditation conform to the current TNI standards.

The reporting limit was elevated for any analyte requiring a dilution as coded below:

@ = Due to sample matrix

= Due to concentration of other analytes

! = Due to sample quantity

+ = Due to internal standard response

CERTIFICATION: MN LAB # 027-015-125 WI LAB # 999447680 ND MICRO # 1013-M ND WW/DW # R-040

MVTL guarantees the accuracy of the analysis done on the sample submitted for testing. It is not possible for MVTL to guarantee that a test result obtained on a particular sample will be the same on any other sample unless all conditions affecting the sample are the same, including sampling by MVTL. As a mutual protection to clients, the public and ourselves, all reports are submitted as the confidential property of clients, and authorization for publication of statements, conclusions or extracts from or regarding our reports is reserved pending our written approval.



MINNESOTA VALLEY TESTING LABORATORIES, INC.

1126 North Front St. ~ New Ulm, MN 56073 ~ 800-782-3557 ~ Fax 507-359-2890
2 North German St. ~ New Ulm, MN 56073 ~ 800-782-3557 ~ Fax 507-359-2890
2616 East Broadway Ave. ~ Bismarck, ND 58501 ~ 800-279-6885 ~ Fax 701-258-9724
1201 Lincoln Hwy. ~ Nevada, IA 50201 ~ 800-362-0855 ~ Fax 515-382-3885
www.mvttl.com



Report Date: 26 Aug 2016

HEIDI SOLBERG
IEA/BROOKLYN PARK
9201 W BDWY STE #600
BROOKLYN PARK MN 55445

Work Order #: 12-12454
Account #: 002190
Purchase Order #: 201610707

Date Received: 11 Aug 2016
Date Sampled: 11 Aug 2016
Temperature at Receipt: 23.8C

PROJECT NAME: ST ANTHONY HS & MIDDLE SCHOOL
PROJECT NUMBER: 201610707

LAB NUMBER	SAMPLE DESCRIPTION	LEAD RESULTS	MCL	DATE ANALYZED	ANALYST
16-A40878	ST36 1ST FLOOR HALL BY ROOM 109 WC	< 0.5 ug/L	15.0	20 Aug 16	RMV
16-A40879	ST37 ROOM WEST OF MEDIA CENTER SINK	6.79 ug/L	15.0	20 Aug 16	RMV
16-A40880	ST38 1ST FLOOR HALL BY ROOM 116 WC	< 0.5 ug/L	15.0	20 Aug 16	RMV
16-A40881	ST39 ROOM 115 EAST WALL SINK NORTH	4.54 ug/L	15.0	20 Aug 16	RMV
16-A40882	ST40 DISTRICT OFFICE LOUNGE SINK	11.2 ug/L	15.0	20 Aug 16	RMV
16-A40883	ST41 HALL OUTSIDE DISTRICT OFFICE WC	< 0.5 ug/L	15.0	20 Aug 16	RMV
16-A40884	ST42 HS MAIN OFFICE HALL SINK	7.43 ug/L	15.0	20 Aug 16	RMV
16-A40885	ST43 HEALTH OFFICE SINK	5.74 ug/L	15.0	20 Aug 16	RMV
16-A40886	ST44 HEALTH OFFICE FILTERED WATER	< 0.5 ug/L	15.0	20 Aug 16	RMV
16-A40887	ST45 ROOM EAST OF ROOM 214 SINK	6.70 ug/L	15.0	20 Aug 16	RMV
16-A40888	ST46 NE ROOM OFF OF ROOM 216 SINK	0.84 ug/L	15.0	20 Aug 16	RMV
16-A40889	ST47 HALL OUTSIDE ROOM 216 WC	< 0.5 ug/L	15.0	20 Aug 16	RMV

Approved by:


Dan O'Connell, Chemistry Laboratory Manager New Ulm, MN

Analyses performed under our Minnesota Department of Health Accreditation conform to the current TNI standards.

The reporting limit was elevated for any analyte requiring a dilution as coded below:

@ = Due to sample matrix

= Due to concentration of other analytes

! = Due to sample quantity

+ = Due to internal standard response

CERTIFICATION: MN LAB # 027-015-125 WI LAB # 999447680 ND MICRO # 1013-M ND WW/DW # R-040

MVTL guarantees the accuracy of the analysis done on the sample submitted for testing. It is not possible for MVTL to guarantee that a test result obtained on a particular sample will be the same on any other sample unless all conditions affecting the sample are the same, including sampling by MVTL. As a mutual protection to clients, the public and ourselves, all reports are submitted as the confidential property of clients, and authorization for publication of statements, conclusions or extracts from or regarding our reports is reserved pending our written approval.



MINNESOTA VALLEY TESTING LABORATORIES, INC.

1126 North Front St. ~ New Ulm, MN 56073 ~ 800-782-3557 ~ Fax 507-359-2890
2 North German St. ~ New Ulm, MN 56073 ~ 800-782-3557 ~ Fax 507-359-2890
2616 East Broadway Ave. ~ Bismarck, ND 58501 ~ 800-279-6885 ~ Fax 701-258-9724
1201 Lincoln Hwy. ~ Nevada, IA 50201 ~ 800-362-0855 ~ Fax 515-382-3885
www.mvtl.com



Report Date: 26 Aug 2016

HEIDI SOLBERG
IEA/BROOKLYN PARK
9201 W BDWY STE #600
BROOKLYN PARK MN 55445

Work Order #: 12-12454
Account #: 002190
Purchase Order #: 201610707
Date Received: 11 Aug 2016
Date Sampled: 11 Aug 2016
Temperature at Receipt: 23.8C

PROJECT NAME: ST ANTHONY HS & MIDDLE SCHOOL
PROJECT NUMBER: 201610707

LAB NUMBER	SAMPLE DESCRIPTION	LEAD RESULTS	MCL	DATE ANALYZED	ANALYST
16-A40890	ST48 HALL ACROSS FROM ROOM 217 WC	< 0.5 ug/L	15.0	20 Aug 16	RMV
16-A40891	ST49 ROOM 220 SINK	1.51 ug/L	15.0	20 Aug 16	RMV
16-A40892	ST50 ROOM 220 FILTERED WATER	< 0.5 ug/L	15.0	20 Aug 16	RMV
16-A40893	ST51 ROOM 217 TEACHERS STATION SINK	16.3 ug/L	15.0	20 Aug 16	RMV
16-A40894	ST52 ROOM 215 TEACHERS STATION SINK	87.8 ug/L	15.0	20 Aug 16	RMV
16-A40895	ST53 MS MAIN OFFICE SINK	9.04 ug/L	15.0	20 Aug 16	RMV
16-A40896	ST54 MS MAIN OFFICE FILTERED WATER	< 0.5 ug/L	15.0	20 Aug 16	RMV
16-A40897	ST55 ROOM 209 TEACHERS STATION SINK	3.83 ug/L	15.0	20 Aug 16	RMV
16-A40898	ST56 ROOM 205 TEACHERS STATION SINK	10.7 ug/L	15.0	20 Aug 16	RMV
16-A40899	ST57 ROOM 203 SINK	4.02 ug/L	15.0	20 Aug 16	RMV
16-A40900	ST58 ROOM 201 TEACHERS STATION SINK	5.04 ug/L	15.0	20 Aug 16	RMV
16-A40901	ST59 3RD FLOOR HALL BY ROOM 300 WC	< 0.5 ug/L	15.0	24 Aug 16	RMV

Approved by:

Dan O'Connell, Chemistry Laboratory Manager New Ulm, MN

Analyses performed under our Minnesota Department of Health Accreditation conform to the current TNI standards.

The reporting limit was elevated for any analyte requiring a dilution as coded below:

@ = Due to sample matrix

= Due to concentration of other analytes

! = Due to sample quantity

+ = Due to internal standard response

CERTIFICATION: MN LAB # 027-015-125 WI LAB # 999447680 ND MICRO # 1013-M ND WW/DW # R-04C

MVTL guarantees the accuracy of the analysis done on the sample submitted for testing. It is not possible for MVTL to guarantee that a test result obtained on a particular sample will be the same on any other sample unless all conditions affecting the sample are the same, including sampling by MVTL. As a mutual protection to clients, the public and ourselves, all reports are submitted as the confidential property of clients, and authorization for publication of statements, conclusions or extracts from or regarding our reports is reserved pending our written approval.



MINNESOTA VALLEY TESTING LABORATORIES, INC.

1126 North Front St. ~ New Ulm, MN 56073 ~ 800-782-3557 ~ Fax 507-359-2890
2 North German St. ~ New Ulm, MN 56073 ~ 800-782-3557 ~ Fax 507-359-2890
2616 East Broadway Ave. ~ Bismarck, ND 58501 ~ 800-279-6885 ~ Fax 701-258-9724
1201 Lincoln Hwy. ~ Nevada, IA 50201 ~ 800-362-0855 ~ Fax 515-382-3885
www.mvttl.com



Report Date: 26 Aug 2016

HEIDI SOLBERG
IEA/BROOKLYN PARK
9201 W BDWY STE #600
BROOKLYN PARK MN 55445

Work Order #: 12-12454
Account #: 002190
Purchase Order #: 201610707

Date Received: 11 Aug 2016
Date Sampled: 11 Aug 2016
Temperature at Receipt: 23.8C

PROJECT NAME: ST ANTHONY HS & MIDDLE SCHOOL
PROJECT NUMBER: 201610707

LAB NUMBER	SAMPLE DESCRIPTION	LEAD RESULTS	MCL	DATE ANALYZED	ANALYST
16-A40902	ST60 ROOM 303 TEACHERS STATION SINK	15.1 ug/L	15.0	24 Aug 16	RMV
16-A40903	ST61 ROOM 305 SINK	24.4 ug/L	15.0	23 Aug 16	RMV
16-A40904	ST62 ROOM 307 TEACHERS STATION SINK	4.02 ug/L	15.0	24 Aug 16	RMV
16-A40905	ST63 ROOM 309 SINK	6.67 ug/L	15.0	24 Aug 16	RMV
16-A40906	ST64 ROOM 311 SINK	3.78 ug/L	15.0	24 Aug 16	RMV
16-A40907	ST66 ROOM 318 SINK	7.74 ug/L	15.0	24 Aug 16	RMV
16-A40908	ST67 3RD FLOOR HALL BY ROOM 313 WC	< 0.5 ug/L	15.0	24 Aug 16	RMV
16-A40909	ST68 3RD FLOOR HALL BY ROOM 323 WC	< 0.5 ug/L	15.0	24 Aug 16	RMV
16-A40910	ST69 ROOM 323 SINK	11.2 ug/L	15.0	24 Aug 16	RMV
16-A40911	ST70 ROOM 320 NORTH WALL SINK WEST	10.8 ug/L	15.0	24 Aug 16	RMV
16-A40912	ST71 KITCHEN SINK SE CORNER	2.22 ug/L	15.0	24 Aug 16	RMV

Approved by:

Dan O'Connell, Chemistry Laboratory Manager New Ulm, MN

Analyses performed under our Minnesota Department of Health Accreditation conform to the current TNI standards.

The reporting limit was elevated for any analyte requiring a dilution as coded below:

@ = Due to sample matrix

= Due to concentration of other analytes

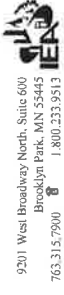
! = Due to sample quantity

+ = Due to internal standard response

CERTIFICATION: MN LAB # 027-015-125 WI LAB # 999447680 ND MICRO # 1013-M ND WW/DW # R-040

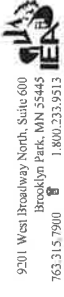
MVTL guarantees the accuracy of the analysis done on the sample submitted for testing. It is not possible for MVTL to guarantee that a test result obtained on a particular sample will be the same on any other sample unless all conditions affecting the sample are the same, including sampling by MVTL. As a mutual protection to clients, the public and ourselves, all reports are submitted as the confidential property of clients, and authorization for publication of statements, conclusions or extracts from or regarding our reports is reserved pending our written approval.

Chain of Custody



Client Name		St. Anthony-New Brighton ISD #282		Building Name		St. Anthony Village HS & St. Anthony Middle School		Analytical Lab		MVTL	
Contact Name				Project #		201610707		Project Name		2016 Lead in Water Testing	
Phone #				IEA Fax #		763-315-7920		Written Sample Results To		Michelle Johnson	
Other Information											
Sampled By		Mary Ferrian		Date		8/11/2016		Time			
Shipped By		Carole Nelson		Date		8/11/2016		Time			
Received By				Date				Time			
Lab Number		Sample Number		Sample Location		Sample Type		Date Sampled		Time Sampled	
						Water					
						Soil					
						Other					
										Analysis Required	
										Volume/ Bottle Type	
										Comments & Observations	
		ST1		LL Athletics - Mens Locker Room - WC		X		8/11/2016		500mL unpreserved	
		ST2		LL Athletics - Hall Outside Gym - Water BF		X		8/11/2016		500mL unpreserved	
		ST3		LL Basement - Pool - DF (North)		X		8/11/2016		500mL unpreserved	
		ST4		LL Basement - Pool - DF (South)		X		8/11/2016		500mL unpreserved	
		ST5		LL Basement - Concessions - Sink		X		8/11/2016		500mL unpreserved	
		ST6		LL Basement - Hall Outside Gym - Water BF		X		8/11/2016		500mL unpreserved	
		ST7		LL Basement - Womens Locker Rm - WC		X		8/11/2016		500mL unpreserved	
		ST8		LL Basement - Mens Locker Rm - WC		X		8/11/2016		500mL unpreserved	
		ST9		LL Basement - Hall outside music - DF		X		8/11/2016		500mL unpreserved	
		ST10		LL Basement - Instrument Stor. - Sink		X		8/11/2016		500mL unpreserved	
		ST11		LL Basement - Instrument Stor. - DF		X		8/11/2016		500mL unpreserved	
		ST12		LL Basement - Scene Shop - Sink (North)		X		8/11/2016		500mL unpreserved	
		ST13		LL Basement - Scene Shop - Sink (South)		X		8/11/2016		500mL unpreserved	
		ST14		Hall Outside Weight Room - WC		X		8/11/2016		500mL unpreserved	
		ST15		Weight Room Storage - Sink		X		8/11/2016		500mL unpreserved	
		ST16		Staff Lounge by Loading Dock - Sink		X		8/11/2016		500mL unpreserved	
		ST17		Staff Lounge by Loading Dock - Filtered Water		X		8/11/2016		500mL unpreserved	
		ST18		Kitchen - East Wall Steam Kettle		X		8/11/2016		500mL unpreserved	
		ST19		Kitchen East Wall S. of Steam Kettle - Sink		X		8/11/2016		500mL unpreserved	
		ST20		Kitchen (Center) - Sink		X		8/11/2016		500mL unpreserved	
		ST21		Kitchen (Center) - Hot Water Tap		X		8/11/2016		500mL unpreserved	
		ST22		Kitchen West Wall - Sink (North)		X		8/11/2016		500mL unpreserved	
		ST23		Kitchen West Wall - Sprayer		X		8/11/2016		500mL unpreserved	
		ST24		Kitchen West Wall - Sink (South)		X		8/11/2016		500mL unpreserved	
		ST25		Kitchen Serving Area - Sink (NE Corner)		X		8/11/2016		500mL unpreserved	
		ST26		Kitchen Serving Area S. Wall - Sink (West)		X		8/11/2016		500mL unpreserved	
		ST27		Kitchen Serving Area S. Wall - Sink (Mid)		X		8/11/2016		500mL unpreserved	
		ST28		Kitchen Serving Area S. Wall - Sink (East)		X		8/11/2016		500mL unpreserved	
		ST29		Area S. of Kitchen N. Wall - Sink (East)		X		8/11/2016		500mL unpreserved	
		ST30		Area S. of Kitchen N. Wall - Sink (West)		X		8/11/2016		500mL unpreserved	
		ST31		Area S. of Kitchen S. Wall - Sink		X		8/11/2016		500mL unpreserved	

Chain of Custody



Client Name		St. Anthony-New Brighton ISD #282		Building Name		St. Anthony Village HS & St. Anthony Middle School		Analytical Lab		MVTL	
Contact Name				Project #		201610707		Project Name		2016 Lead in Water Testing	
Phone #				IEA Fax #		763-315-7920		Written Sample Results To		Michelle Johnson	
Other Information											
Sampled By		Mary Ferrian		Date		8/11/2016		Time		Date & Time	
Shipped By		Carole Nelson		Date		8/11/2016		Time		Notes	
Received By				Date				Time		Temperature	

Lab Number	Sample Number	Sample Location	Sample Type			Date Sampled	Time Sampled	Volume/ Bottle Type	Analysis Required	Comments & Observations
			Water	Soil	Other					
	ST32	Hall Outside Auditorium - WC	X			8/11/2016		500mL unpreserved	Lead	
	ST33	1st Floor Hall East by Restrooms - WC	X			8/11/2016		500mL unpreserved	Lead	
	ST34	Room East of Room 103 - Sink (by stairwell)	X			8/11/2016		500mL unpreserved	Lead	
	ST35	Room 103 Teachers station - Sink	X			8/11/2016		500mL unpreserved	Lead	
	ST36	1st Floor Hall by Room 109 - WC	X			8/11/2016		500mL unpreserved	Lead	
	ST37	Room West of Media Center - Sink	X			8/11/2016		500mL unpreserved	Lead	
	ST38	1st Floor Hall by Room 116 - WC	X			8/11/2016		500mL unpreserved	Lead	
	ST39	Room 115 East Wall - Sink (North)	X			8/11/2016		500mL unpreserved	Lead	
	ST40	District Office Lounge - Sink	X			8/11/2016		500mL unpreserved	Lead	
	ST41	Hall Outside District Office - WC	X			8/11/2016		500mL unpreserved	Lead	
	ST42	HS Main Office Hall - Sink	X			8/11/2016		500mL unpreserved	Lead	
	ST43	Health Office - Sink	X			8/11/2016		500mL unpreserved	Lead	
	ST44	Health Office - Filtered Water	X			8/11/2016		500mL unpreserved	Lead	
	ST45	Room East of Room 214 - Sink	X			8/11/2016		500mL unpreserved	Lead	
	ST46	NE Room off of Room 216 - Sink	X			8/11/2016		500mL unpreserved	Lead	
	ST47	Hall Outside Room 216 - WC	X			8/11/2016		500mL unpreserved	Lead	
	ST48	Hall Across from Room 217 - WC	X			8/11/2016		500mL unpreserved	Lead	
	ST49	Room 220 - Sink	X			8/11/2016		500mL unpreserved	Lead	
	ST50	Room 220 - Filtered Water	X			8/11/2016		500mL unpreserved	Lead	
	ST51	Room 217 Teachers station - Sink	X			8/11/2016		500mL unpreserved	Lead	
	ST52	Room 215 Teachers station - Sink	X			8/11/2016		500mL unpreserved	Lead	
	ST53	MS Main Office - Sink	X			8/11/2016		500mL unpreserved	Lead	
	ST54	MS Main Office - Filtered Water	X			8/11/2016		500mL unpreserved	Lead	
	ST55	Room 209 Teachers station - Sink	X			8/11/2016		500mL unpreserved	Lead	
	ST56	Room 205 Teachers station - Sink	X			8/11/2016		500mL unpreserved	Lead	
	ST57	Room 203 - Sink	X			8/11/2016		500mL unpreserved	Lead	
	ST58	Room 201 Teachers station - Sink	X			8/11/2016		500mL unpreserved	Lead	
	ST59	3rd Floor Hall by Room 300 - WC	X			8/11/2016		500mL unpreserved	Lead	
	ST60	Room 303 Teachers station - Sink	X			8/11/2016		500mL unpreserved	Lead	
	ST61	Room 305 - Sink	X			8/11/2016		500mL unpreserved	Lead	
	ST62	Room 307 Teachers station - Sink	X			8/11/2016		500mL unpreserved	Lead	

9201 West Broadway North, Suite 600
Brooklyn Park, MN 55445
763.315.7900  1.800.233.9513

Original - Analytical Lab
Copy - Client File
Copy - IEA Lab



MINNESOTA VALLEY TESTING LABORATORIES, INC.

1126 North Front St. ~ New Ulm, MN 56073 ~ 800-782-3557 ~ Fax 507-359-2890
2 North German St. ~ New Ulm, MN 56073 ~ 800-782-3557 ~ Fax 507-359-2890
2616 East Broadway Ave. ~ Bismarck, ND 58501 ~ 800-279-6885 ~ Fax 701-258-9724
1201 Lincoln Hwy. ~ Nevada, IA 50201 ~ 800-362-0855 ~ Fax 515-382-3885

www.mvttl.com



Report Date: 9 Sep 2016

HEIDI SOLBERG
IEA/BROOKLYN PARK
9201 W BDWY STE #600
BROOKLYN PARK MN 55445

Work Order #: 12-13342
Account #: 002190
Purchase Order #: 201610707

Date Received: 1 Sep 2016
Date Sampled: 1 Sep 2016
Temperature at Receipt: 24.1C

PROJECT NAME: ST ANTHONY VILLAGE
PROJECT NUMBER: 201610707

LAB NUMBER	SAMPLE DESCRIPTION	LEAD RESULTS	MCL	DATE ANALYZED	ANALYST
16-A45005	ST1 LL ATHLETICS MENS LOCKER ROOM WC	< 0.5 ug/L	15.0	8 Sep 16	RMV
16-A45006	ST65 ROOM 313 SINK	23.6 ug/L	15.0	8 Sep 16	RMV

Approved by:

Dan O'Connell, Chemistry Laboratory Manager New Ulm, MN

Analyses performed under our Minnesota Department of Health Accreditation conform to the current TNI standards.

The reporting limit was elevated for any analyte requiring a dilution as coded below:

@ = Due to sample matrix

= Due to concentration of other analytes

! = Due to sample quantity

+ = Due to internal standard response

CERTIFICATION: MN LAB # 027-015-125 WI LAB # 999447680 ND MICRO # 1013-M ND WW/DW # R-040

MVTL guarantees the accuracy of the analysis done on the sample submitted for testing. It is not possible for MVTL to guarantee that a test result obtained on a particular sample will be the same on any other sample unless all conditions affecting the sample are the same, including sampling by MVTL. As a mutual protection to clients, the public and ourselves, all reports are submitted as the confidential property of clients, and authorization for publication of statements, conclusions or extracts from or regarding our reports is reserved pending our written approval.

IDEA
9201 West Broadway North, Suite 600
Brooklyn Park, MN 55445
763.315.7900 1.800.223.9513

Original - Analytical Lab
Copy - Client File
Copy - IEA Lab



MINNESOTA VALLEY TESTING LABORATORIES, INC.

1126 North Front St. ~ New Ulm, MN 56073 ~ 800-782-3557 ~ Fax 507-359-2890
2 North German St. ~ New Ulm, MN 56073 ~ 800-782-3557 ~ Fax 507-359-2890
2616 East Broadway Ave. ~ Bismarck, ND 58501 ~ 800-279-6885 ~ Fax 701-258-9724
1201 Lincoln Hwy. ~ Nevada, IA 50201 ~ 800-362-0855 ~ Fax 515-382-3885
www.mvttl.com



Report Date: 9 Sep 2016

HEIDI SOLBERG
IEA/BROOKLYN PARK
9201 W BDWY STE #600
BROOKLYN PARK MN 55445

Work Order #: 12-13343
Account #: 002190
Purchase Order #: 201610707

Date Received: 1 Sep 2016
Date Sampled: 1 Sep 2016
Temperature at Receipt: 24.1C

SEP 14 2016

PROJECT NAME: WILSHIRE PARK ELEM.
PROJECT NUMBER: 201610707

LAB NUMBER	SAMPLE DESCRIPTION	LEAD RESULTS	MCL	DATE ANALYZED	ANALYST
16-A45007	WP20 GYMNASIUM DF WEST	17.9 ug/L	15.0	8 Sep 16	RMV
16-A45008	WP21 GYMNASIUM DF EAST	13.5 ug/L	15.0	8 Sep 16	RMV

Approved by:

Dan O'Connell, Chemistry Laboratory Manager New Ulm, MN

Analyses performed under our Minnesota Department of Health Accreditation conform to the current TNI standards.

The reporting limit was elevated for any analyte requiring a dilution as coded below:

@ = Due to sample matrix

= Due to concentration of other analytes

! = Due to sample quantity

+ = Due to internal standard response

CERTIFICATION: MN LAB # 027-015-125 WI LAB # 999447680 ND MICRO # 1013-M ND WW/DW # R-040

MVTL guarantees the accuracy of the analysis done on the sample submitted for testing. It is not possible for MVTL to guarantee that a test result obtained on a particular sample will be the same on any other sample unless all conditions affecting the sample are the same, including sampling by MVTL. As a mutual protection to clients, the public and ourselves, all reports are submitted as the confidential property of clients, and authorization for publication of statements, conclusions or extracts from or regarding our reports is reserved pending our written approval.

[illegible]



MINNESOTA VALLEY TESTING LABORATORIES, INC.

1126 North Front St. ~ New Ulm, MN 56073 ~ 800-782-3557 ~ Fax 507-359-2890
2 North German St. ~ New Ulm, MN 56073 ~ 800-782-3557 ~ Fax 507-359-2890
2616 East Broadway Ave. ~ Bismarck, ND 58501 ~ 800-279-6885 ~ Fax 701-258-9724
1201 Lincoln Hwy. ~ Nevada, IA 50201 ~ 800-362-0855 ~ Fax 515-382-3885
www.mvttl.com



Report Date: 9 Sep 2016

HEIDI SOLBERG
IEA/BROOKLYN PARK
9201 W BDWY STE #600
BROOKLYN PARK MN 55445

Work Order #: 12-13420
Account #: 002190
Purchase Order #: 201610707

Date Received: 2 Sep 2016
Date Sampled: 2 Sep 2016
Temperature at Receipt: 21.1C

PROJECT NAME: ST ANTHONY VILLAGE HS & MIDDLE
PROJECT NUMBER: 201610707

LAB NUMBER	SAMPLE DESCRIPTION	LEAD RESULTS	MCL	DATE ANALYZED	ANALYST
16-A45162	ST15A WEIGHT ROOM STORAGE-SINK	6.16 ug/L	15.0	8 Sep 16	RMV
16-A45163	ST25A KITCHEN SERVING AREA-NE CORNER SINK	5.16 ug/L	15.0	8 Sep 16	RMV
16-A45164	ST28A KITCHEN SERVING AREA-S. WALL- EAST SINK	12.5 ug/L	15.0	8 Sep 16	RMV
16-A45165	ST51A ROOM 217 TEACHERS STATION SINK	3.74 ug/L	15.0	8 Sep 16	RMV
16-A45166	ST52A ROOM 215 TEACHERS STATION SINK	8.80 ug/L	15.0	8 Sep 16	RMV
16-A45167	ST60A ROOM 303 TEACHERS STATION SINK	4.42 ug/L	15.0	8 Sep 16	RMV
16-A45168	ST61A ROOM 305-SINK	10.2 ug/L	15.0	8 Sep 16	RMV

Approved by:

Dan O'Connell, Chemistry Laboratory Manager New Ulm, MN

Analyses performed under our Minnesota Department of Health Accreditation conform to the current TNI standards.

The reporting limit was elevated for any analyte requiring a dilution as coded below:

@ = Due to sample matrix

= Due to concentration of other analytes

! = Due to sample quantity

+ = Due to internal standard response

CERTIFICATION: MN LAB # 027-015-125 WI LAB # 999447680 ND MICRO # 1013-M ND WW/DW # R-040

MVTL guarantees the accuracy of the analysis done on the sample submitted for testing. It is not possible for MVTL to guarantee that a test result obtained on a particular sample will be the same on any other sample unless all conditions affecting the sample are the same, including sampling by MVTL. As a mutual protection to clients, the public and ourselves, all reports are submitted as the confidential property of clients, and authorization for publication of statements, conclusions or extracts from or regarding our reports is reserved pending our written approval.

[illegible]



MINNESOTA VALLEY TESTING LABORATORIES, INC.

1126 North Front St. ~ New Ulm, MN 56073 ~ 800-782-3557 ~ Fax 507-359-2890
2 North German St. ~ New Ulm, MN 56073 ~ 800-782-3557 ~ Fax 507-359-2890
2616 East Broadway Ave. ~ Bismarck, ND 58501 ~ 800-279-6885 ~ Fax 701-258-9724
1201 Lincoln Hwy. ~ Nevada, IA 50201 ~ 800-362-0855 ~ Fax 515-382-3885
www.mvttl.com



Report Date: 9 Sep 2016

HEIDI SOLBERG
IEA/BROOKLYN PARK
9201 W BDWY STE #600
BROOKLYN PARK MN 55445

Work Order #: 12-13423
Account #: 002190
Purchase Order #: 201610707

Date Received: 2 Sep 2016
Date Sampled: 2 Sep 2016
Temperature at Receipt: 21.1C

PROJECT NAME: WILSHIRE PARK ELEMENTARY
PROJECT NUMBER: 201610707

LAB NUMBER	SAMPLE DESCRIPTION	LEAD RESULTS	MCL	DATE ANALYZED	ANALYST
16-A45169	WP2A KITCHEN-SPRAYER	13.8 ug/L	15.0	8 Sep 16	RMV
16-A45170	WP2AF KITCHEN-SPRAYER	12.4 ug/L	15.0	8 Sep 16	RMV
16-A45171	WP5A KITCHEN N WALL-WEST SINK	12.2 ug/L	15.0	8 Sep 16	RMV
16-A45172	WP6A KITCHEN N WALL-EAST SINK	12.1 ug/L	15.0	8 Sep 16	RMV
16-A45173	WP13A ROOM 126-DRINKING FOUNTAIN	1.58 ug/L	15.0	8 Sep 16	RMV
16-A45174	WP33A ROOM 101-DRINKING FOUNTAIN	12.1 ug/L	15.0	8 Sep 16	RMV
16-A45175	WP34A ROOM 102-DRINKING FOUNTAIN	14.3 ug/L	15.0	8 Sep 16	RMV
16-A45176	WP53A ROOM 109-DRINKING FOUNTAIN	6.20 ug/L	15.0	8 Sep 16	RMV

Approved by:

Dan O'Connell, Chemistry Laboratory Manager New Ulm, MN

Analyses performed under our Minnesota Department of Health Accreditation conform to the current TNI standards.

The reporting limit was elevated for any analyte requiring a dilution as coded below:

@ = Due to sample matrix

= Due to concentration of other analytes

! = Due to sample quantity

+ = Due to internal standard response

CERTIFICATION: MN LAB # 027-015-125 WI LAB # 999447680 ND MICRO # 1013-M ND WW/DW # R-040

MVTL guarantees the accuracy of the analysis done on the sample submitted for testing. It is not possible for MVTL to guarantee that a test result obtained on a particular sample will be the same on any other sample unless all conditions affecting the sample are the same, including sampling by MVTL. As a mutual protection to clients, the public and ourselves, all reports are submitted as the confidential property of clients, and authorization for publication of statements, conclusions or extracts from or regarding our reports is reserved pending our written approval.

IEA
9201 West Broadway North, Suite 600
Brooklyn Park, MN 55445
763.315.7900 1.800.233.9513

Original - Analytical Lab
Copy - Client File
Copy - IEA Lab