



# Maine School of Science and Mathematics

## 2019-2020 School Profile

The **Maine School of Science and Mathematics (MSSM)** was founded in 1995 by the Maine Legislature as a public, residential magnet school that serves talented and highly motivated high school students from across the state and around the world. For the 2019-2020 school year, MSSM serves 140 students in grades 9-12.

MSSM's academic year is divided into semesters with an additional January term providing opportunities for accelerated, specialty courses, and internships.

### Academic Rigor

Most courses at MSSM are taught at the college level using college textbooks and curricular materials. MSSM has an agreement with The University of Maine at Presque Isle allowing students to receive college credit for a majority of MSSM courses that are taught at or beyond the AP level.

Advanced Placement courses are offered at MSSM in Calculus AB and BC, Statistics, Chemistry, and Physics C: Mechanics and Electricity & Magnetism.

MSSM students are motivated, talented and hard-working. In 2019, they took 129 Advanced Placement tests and demonstrated their mastery of college level material by achieving a mean score of 4.0 on the tests.

Grading is also done at the college level. Grades are not weighted despite the rigor of MSSM's curriculum.

**David Pearson**  
Executive Director  
pearsond@mssm.org

**Erica Jortberg**  
College Counselor  
jortberge@mssm.org

**Deborah McGann**  
Dean of Faculty  
mcgannnd@mssm.org

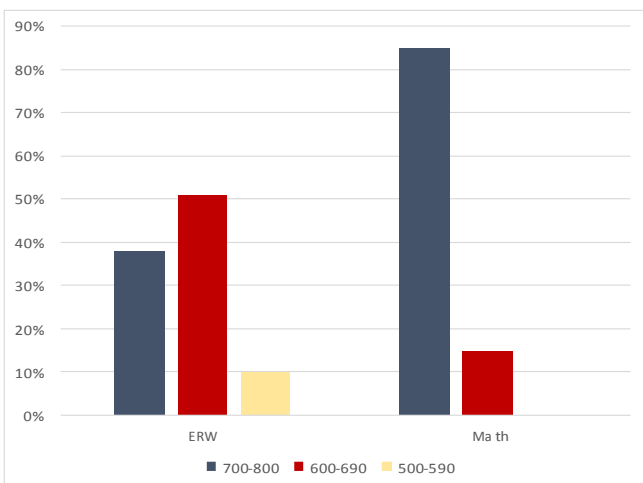
**Cindy Farley**  
Registrar  
farleyc@mssm.org



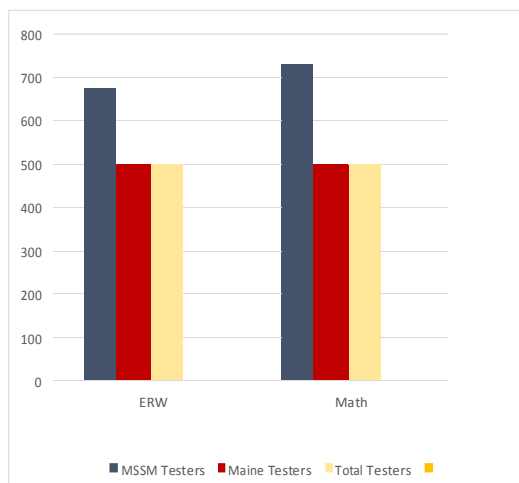
MSSM is ranked by U.S. News and World Report as the **#1** High School in Maine, **#2** High School in the U.S., **#2** Magnet School in the U.S.

5-year AP Test Average		
Subject	Number Tested	Mean Score
Science	40	3.7
Math	51	4.2
Humanities	32	3.9
Total for All Subjects	123	3.9

Percentages of Students in SAT Score Ranges, Class of 2019



2019 SAT MSSM Compared to the State & Total Population



## A Learning Community

---

MSSM is located in the town of Limestone (pop. 2,300) in a rural area near the northern tip of Maine, less than two miles from the Canadian Border. The nearest city, Bangor (pop. 33,000), is a three hour drive from MSSM, and the biggest city in our state, Portland (pop. 66,000), is almost six hours away. With these longer drive times, it is difficult for MSSM students to make college visits. Therefore interviews are most commonly completed via video conferencing.

Activities at MSSM range from Astronomy Club and Art Club to VEX Robotics and Key Club. MSSM requires two hours per week of community service from students, such as tutoring, assisting faculty, or serving as residential assistants. To emphasize academic collaboration over competition, MSSM records neither GPA nor class rank. The school's small size, residential nature, and cooperative academic environment combine to create a very tight-knit community of scholars.

MSSM offers the dedicated student athlete an opportunity to engage in sports. Varsity teams currently include cross country, soccer, track, Nordic skiing, and volleyball.

### Distinctive Academic Features and Awards

---

- Admission to MSSM is highly competitive. In addition to their academic ability (measured by grades, teacher recommendations, a writing sample and test scores) our students are selected on the basis of maturity, motivation, and ability to contribute positively to the residential environment.
- In 2019-2020, the student teacher ratio is 8:1.
- The academic year includes a January term which gives students the opportunity for intensive interdisciplinary classes, research opportunities, and internships.
- 92% of faculty hold advanced degrees. Many have significant private sector experience and have studied extensively in their fields.
- In March 2019, MSSM's jazz combo was awarded its first-ever medal at a state competition.
- MSSM wins 2019 Maine State Science Bowl Competition.
- The 2019 SeaPerch team placed first in the judging of the engineering design at the national SeaPerch Challenge at the University of Maryland.
- Out of 41 students in the class of 2020, nine will receive recognition in the 2019 National Merit Scholarship Program
- For the fifth consecutive year, the MSSM math team took first place in the Maine State Math Meet. They also won the regular season championship in the Maine Association of Math Leagues
- MSSM requires two years of world language and two years of social sciences.

### Matriculation Summary: Classes of 2018 and 2019

Boston College	Maine Maritime Academy	Tufts University
Boston University	Mass. Institute of Technology	Univ. of California, Berkeley
Bowdoin College	McGill University	Univ. of California, San Diego
Carnegie Mellon University	Mercer University	Univ. of Detroit Mercy
Champlain College	Mount Holyoke College	University of Glasgow
Clarkson University	New York University	University of Mass., Amherst
Colby College	Northwestern University	University of Maine
Colorado School of Mines	Pomona College	University of Maine, Presque Isle
Cornell University	Rensselaer Polytechnic Institute	University of Southern Maine
Eckerd College	Rochester Institute of Technology	University of the Pacific
Embry-Riddle Aeronautical University	Smith College	University of Wisconsin, Eau Claire
Grinnell College	Southern Methodist University	Washington Univ. St. Louis
Harvey Mudd College	Stevens Institute of Technology	Wellesley College
Husson University	Stony Brook University	Williams College
Lehigh University	Suffolk University	Worcester Polytechnic Institute
	The George Washington Univ.	