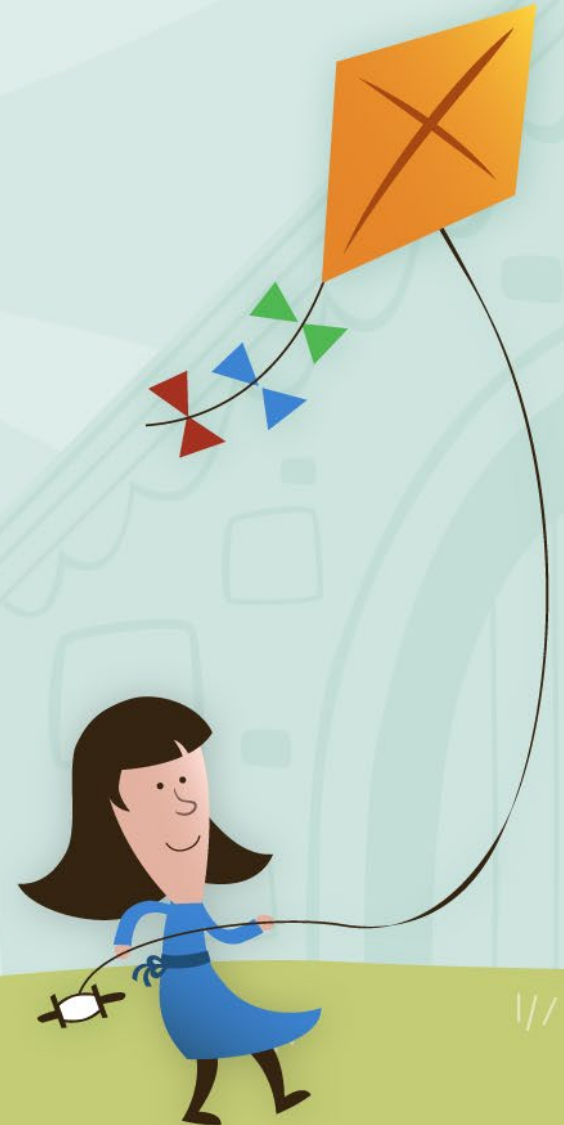


Return to In-Person Instruction

Palos School District 118

July 2020

Email questions to:
return2020@palos118.org



Thank You!

Palos 118 Families
Palos 118 Staff
Dr. Ron Cozza, Assistant Superintendent
Mrs. Erin Deval, Director of Student Services
Mr. Justin Veihman, Chief School Business Official
Mrs. Huwaida Hamad, Director of EL
Mr. Scott Fox, Director of Technology
Mrs. Mary Meyer, Transportation Coordinator
Mrs. Kathy Pagoria, Operations Assistant
Dr. Vanessa Kinder, ISC 4 Regional Office
Mrs. Mary Banner, PEA President
Mrs. Judy Schramm, PEA Vice President
Mrs. Jane Dragel, PEA Executive Board

Mrs. Lindsey George, PEA Executive Board
Mr. Tom Melody, Board Attorney
Mrs. Theresa Segredo, School Nurse
Ms. Jane Scott, School Nurse
Ms. Darlene Sierzega, School Nurse
Mr. Stu Wrzesinski, Principal
Mrs. Meagan Doornbos, Asst. Principal
Mr. Rob Szklancki, Principal
Mrs. Terri Dodds, Asst. Principal
Ms. Jennifer Peloquin, Principal
Ms. Rose White, Asst. Principal
Dr. James Cantorna, M.D.
Dr. Erin Dursa, Epidemiologist
Gallagher Bassett Insurance
ARCON Architects
ARAMARK Food Service



P.A. 101-0643

School districts are encouraged to provide completely in-person instruction for all students in Phase 4, provided that the school district is able to comply with safety mandates and recommendations outlined for in-person instruction by the Illinois Department of Public Health (IDPH).

School districts were tasked with creating three instructional models – Full Return, Blended (Hybrid), and Remote Only.

ISBE & IDPH issued joint guidance for in-person instruction on June 23.



District 118 In-Person Instruction Safety Plan



- Incorporates mandates and recommendations from the following:
 - ISBE/IDPH Joint Guidance and subsequent updates
 - Guidelines for reopening schools published by the Centers for Disease Control & Prevention
 - Recommendations from the American Academy of Pediatrics
 - Stakeholder feedback
- The Safety Plan was released on July 1 and is posted on our website.
- The school district wants to be fully transparent about what school will look like.
- The Safety Plan is a “living document” that will be revised as needed.



**Illinois
State Board of
Education**



District 118 In-Person Safety Plan – Face Masks

All staff, students and visitors to the school will be required to wear face masks at all times when in school buildings with the exception of eating or drinking.

- Parents are encouraged to purchase washable reusable masks for their student(s) that is likable and comfortable.
- A limited supply of disposable and/or reusable face masks will be available in the event a student or staff member does not have one to use.
- Outdoor mask breaks will be scheduled throughout the day.
- The correct and consistent wearing of face masks is essential to keeping students and staff safe.



District 118 In-Person Safety Plan – Social Distancing

- **The maximum allowable distance between students will be maintained in relation to the physical size of each space, which may not always be 6 ft. apart.**
- Non-essential furniture and equipment will be removed from classrooms to maximize distance between students.
- Students will have assigned seating.
- Some classes may be temporarily relocated to large areas like gyms and media centers to maximize social distancing.
- No more than 50 people in one space at a time.



District 118 In-Person Safety Plan – Symptom Checks

Daily temperature checks and symptom surveys are required for daily access to school buildings.

- Parents will be required to fill out a temperature check and symptom survey form prior to their student(s) boarding school buses and entering school buildings.
- Upon arrival at school, students will be randomly screened for fever using touchless thermometers.
- Students with a temperature of 100.4 degrees Fahrenheit or greater will be quarantined in an isolation room until they can be picked up from school.
- Parents and guardians are expected to pick up students within one hour of notification of quarantine.
- Parents must provide their school with at least three emergency contacts in addition to themselves.



District 118 In-Person Safety Plan – Responding to COVID 19 Symptoms

School nurses will assess students displaying COVID-19 symptoms

- Students suspected of COVID-19 will be quarantined and monitored in a designated isolation room until parent pick-up.
- Areas of the school used by a student suspected of COVID-19 will be closed off and disinfected following CDC and IDPH guidelines.
- Symptomatic students who suspect they have COVID-19 are encouraged to seek testing.
- They should not return to school until 72 hours have elapsed from resolution of fever without fever-reducing medication and 10 days have passed after symptoms first appeared.



District 118 In-Person Safety Plan – Responding to COVID 19 Confirmed Cases

Parents and staff need to report confirmed cases to their respective schools.

- Areas of the school used by a student with COVID-19 will be closed off and disinfected following CDC and IDPH guidelines.
- All individuals coming into close contact (within 6 ft. for more than 15 minutes) will be notified.
- Local health officials will be notified.
- Schools will communicate to their respective school communities any known confirmed cases of COVID-19
- The school district will coordinate with local health officials to determine if and to what extent a quarantine or school closure must be initiated.



District 118 In-Person Safety Plan – Responding to COVID 19 Quarantine & Closure

Quarantines

- May involve a single classroom or multiple classrooms. In most cases of a classroom quarantine, both the teacher and students will transition to remote learning for the duration of the quarantine period. Only individuals coming into close contact are required to quarantine.

School Closures

- May involve a single school or multiple schools. Decisions on school closures will be made in consultation with local health officials and IDPH.



District 118 In-Person Safety Plan – Transportation

Bus capacity will be limited to 50 occupants.

- Bus riders will practice social distancing to the greatest extent possible.
- All students will be assigned a seat.
- Students will be encouraged to practice social distancing at bus stops.
- Bus drivers and students will be required to wear masks while on buses.
- Windows will be open to increase fresh air flow during operation.
- Buses will be sanitized between bus runs.



District 118 In-Person Safety Plan



- No plan can eliminate all risk of transmission of COVID-19 in schools.
- Safety plans are designed to follow best practices for reducing the potential for transmission in schools.
- The plan requires shared responsibility by the entire school community.
- It will take a team effort to reopen schools and to keep them open.



Instructional Models

Full Return/Blended (Hybrid)/Remote Only



Full Return Model

- All students return to school for in-person instruction five days a week.
- Students are required to receive 5 clock hours of instruction.
- There is no mandate relief of any curricular requirements.
- Schools must implement IDPH & ISBE safety requirements.



Blended (Hybrid) Model

- Students attend school on alternating schedules to reduce the number of students physically present in school at one time.
- Utilized on days when the school district is offering both remote learning and in-person instruction (hybrid model).
- Students are required to receive 5 clock hours of instruction.
- There is no mandate relief from curricular requirements.
- Schools must implement IDPH & ISBE safety requirements.



Remote Only Model

- There is no in-person instruction offered to students.
- Utilized on days when the school district is offering remote only instruction.
- Remote learning plans were previously approved last spring.
- These plans will need to be updated once ISBE releases final guidance.
- Students are required to receive 5 clock hours of instruction.
- There is no mandate relief from curricular requirements.



Why Multiple Plans?

School districts must be prepared to transition between in-person, blended (hybrid) and remote only instructional models based on:

- An emergency order by the Governor (return to Phase 3)
- Outbreaks of confirmed COVID-19 cases in a school or multiple schools
- Confirmed community spread of the virus
- Directives from IDPH, ISBE or the Governor's Office
- Staffing shortages



Blended Learning (Hybrid) Plan



District 118 Blended Learning Plan

The district investigated different hybrid models for blended learning.

(AM/PM, Alternating Days, Alternating Weeks)

Barriers to Implementation:

- Adequate staffing
- Capacity of our transportation system
- Ability to implement safety plan
- Academic factors
- Impact on families



AM/PM Half Day Model

- Cleaning and sanitizing school buildings mid-day between groups of students attending morning and afternoon sessions
- Sufficient buses to transport kindergarten routes, Grades 1-5 routes and Grades 6-8 routes all during the mid-day
- Cleaning and sanitizing buses between morning drop off and afternoon pick up
- Extremely limited time for actual in-person instruction considering the safety protocols for admitting students to the school building, hand washing protocols, mask breaks and contractual teacher plan time – Less than 2 hours of instruction.



Alternating Day and Week Models

Alternating days would require students to attend Monday/Wednesday/Friday one week and Tuesday/Thursday the next week.

- Inconsistent schedules for families

Alternating weeks would require students to attend in-person for an entire week and remote-only instruction the following week.

- Students would be away from in-person instruction for 9 days



District 118 Blended Learning Plan – Split Week

- Students attend school twice per week for in-person instruction and engage in remote learning for three days
- Group A attends in-person on Monday & Tuesday with remote learning on Wednesday, Thursday and Friday
- Group B attends in-person on Thursday & Friday, with remote learning on Monday, Tuesday and Wednesday
- All school buildings are closed on Wednesday for deep cleaning between Group A and Group B attendance.
- Siblings will have the same schedule to the greatest extent possible.



Stakeholder Feedback

District 118 In-Person Instruction Safety Plan

Instructional Models



Parent Survey Results

- 926 respondents (approximately 70% of district families)
- 97% of respondents read the District's In-Person Safety Plan.
- 73% of respondents said they were comfortable sending their child to in-person instruction after reading the safety plan.
- 58% of respondents said there is a parent or trusted adult home during the day to assist in remote learning.
- 37% of respondents said bus transportation is the only way to get their child to school.
- 89% of respondents said their child will wear a face mask to return to in-person instruction.
- 92% of respondents said they are willing to complete a daily form to certify their child is symptom free prior to sending them to school.



Parent Survey Results – Instructional Models

FULL RETURN	Palos East	Palos South	Palos West	Total
Strongly Oppose/Oppose	29%	28%	33%	30%
Strongly Support/Support	71%	72%	67%	70%

HYBRID	Palos East	Palos South	Palos West	Total
Strongly Oppose/Oppose	45%	41%	46%	44%
Strongly Support/Support	55%	59%	54%	56%

REMOTE ONLY	Palos East	Palos South	Palos West	Total
Strongly Oppose/Oppose	79%	79%	72%	77%
Strongly Support/Support	21%	21%	28%	23%



Parent Concerns – Major Themes

Health and Safety

- General concerns regarding how COVID-19 is transmitted
- Self-certification will not be taken seriously
- Social emotional impact of students not being in school with peers

Wearing Masks

- Opposition to wearing masks in general
- Enforceability of mask wearing mandate

Students Falling Behind

- General dislike of remote learning
- The need for more accountability for remote learning
- Working parents unable to support children on remote learning

Childcare

- Securing childcare for remote learning days



Teacher Concerns

Health and Safety

- General concerns regarding how COVID-19 is transmitted
- Self-certification will not be taken seriously
- Social emotional impact of students not being in school with peers

Logistics of implementing all of the new safety procedures

- Staffing needs
- Enforceability of mask wearing



Recommendation for Reopening Schools



Recommendation for Reopening Schools

Based on current information obtained to date including but not limited to:

- ISBE & IDPH Joint Guidance
- CDC Guidelines for Child Care Facilities and Schools
- American Academy of Pediatrics COVID-19 Planning Considerations
- AFT: A Plan to Safely Reopen American's Schools & Communities
- Governor Pritzker's Restore Illinois Plan
- The Palos Education Association
- District 118 Family and Staff Survey Feedback
- National Institute for Excellence in Teaching Planning Guide



Recommendation for Reopening Schools

The recommended plan for reopening schools is designed to protect the safety of our students and staff as they return to in-person instruction.

This plan recommends safety precautions and an instructional model that will minimize the risk of transmission during in-person instruction.

There is no guarantee that this plan will be the plan that is ultimately implemented in August.

- A return to Phase 3
- Outbreaks of confirmed COVID-19 cases in schools
- Confirmed community spread of the virus
- Directives from IDPH, ISBE or the Governor's Office
- Staffing



Recommendation for Reopening Schools

Cautious, thoughtful and informed phase-in:

August 26 – September 25

Hybrid Model (In-person 2x per week & Remote 3x per week)

Group A – Monday/Tuesday

Group B – Thursday/Friday

September 28

Full Return (In-person 5x per week)

All Families will have a Remote Only Learning Option



Why a Phased In Approach?

- Significantly decreases the staff to student ratio during the first four weeks of school
- Provides students with more individualized social emotional and academic support as they return from a long hiatus
- Allows students time to acclimate to the new safety procedures in a smaller group setting
- Allows staff the ability to implement, review, modify and revise safety procedures prior to all students returning
- Offers an additional four and a half weeks to see if similarly situated schools in our area that fully reopened are experiencing outbreaks of COVID-19



Calendar Implications

Calendar:

- Week of August 24th
 - August 24 & 25 – Staff safety training and Institute Days
 - August 26 - Group A attends in-person, Group B is remote learning
 - August 27 – Remote Learning Day for A & B
 - August 28 – Group B attends in person, Group A is remote learning

- August 31st - September 25th
 - Group A – In-person: Monday, Tuesday, Remote: Wednesday, Thursday, Friday
 - Group B – Remote: Monday, Tuesday, Wednesday, In-person: Thursday, Friday



Schedule Implications

School Day

- Grades 1-8 – Follows regular building start and end times on in-person instruction days.
- Full Day Kindergarten – Follows 9:15-3:00 start and end times on in-person instruction days.
- ½ Day Kindergarten – AM attends from 9:15-11:45, PM attends 12:30-3:00 on in-person instruction days.
- Preschool Students – Attends 4 days in-person (M,T,TH,F). AM attends 9:15-11:15, PM attends 1:00-3:00
- Some students may attend in-person instruction beyond two days to address specific learning needs.



District 118 Blended Learning Plan - Elementary

In-Person Days

- Instructional focus on ELA, Math and Social Emotional Learning
- Students receive specials including art, music, P.E./health
- Recess and face mask breaks



Remote Days – 5 clock hours

- Instructional focus on social studies and science
- Instructional check-ins from teachers
- Targeted instructional activities and live interaction with teachers
- Attendance/Grades
- Updated ISBE Guidance



District 118 Blended Learning Plan – Middle School

In-Person Days

- Students will have a traditional schedule with minor modifications
- Teachers will rotate rather than students
- Face masks breaks

Remote Days – 5 clock hours

- Independent learning and class assignments
- Office hours held by teachers for live support
- Attendance/Grades
- Updated ISBE Guidance



Recommendation for Reopening

Pros

- More individualized attention upon return from long hiatus
- Sufficient time and smaller group setting to acclimate to new safety procedures
- Ability to test and refine safety procedures before full return
- Additional time to examine the results of other districts that have fully opened



Cons

- Daycare options for the first 4.5 weeks of school (hybrid plan)
- Supporting students learning in-person and remotely simultaneously



Remote Only Option



Remote Learning Only Option

- Available to all District 118 families who are uncomfortable or unable to send students back to in-person instruction.
- Families must elect to participate in remote only option for the entire first grading quarter.
- Students will receive 5 clock hours of instruction during remote learning.
- Learning activities will include both synchronous and asynchronous learning activities.
- Program may be modified based on final ISBE guidance and enrollment numbers.



What has changed with remote learning since last year?

Increased Instructional Time

- Mandated 5 clock hours of instruction
- No relief from curricular mandates

Increased Live Support

Consistent Learning Platforms

Accountability

- Attendance
- Grading

1:1 Student Devices

Increased Family Support/Training

Additional Teacher Professional Development



Professional Development & Training

STAFF	STUDENTS	PARENTS
Safety Training	Safety Training and Social Distancing Practices	Safety Training on Self-Certifying Students
SEL Training	Safe Hygiene Practices	Training on Digital Platforms: SeeSaw and Schoology
Instructional Technology Training for Remote Learning	Instructional Technology Training	Training on Skyward



Remote Learning Only Delivery Methods – Based on Enrollment by Grade Level

Scenario 1

- Teachers recording instruction delivered in their classrooms while teaching their in-person students.
- Recorded lessons uploaded the following day.
- Daily instructional check-ins from teacher.
- 5 clock hours of instruction.
- Core subject areas.



*Parents will receive an email with instructions for opting into remote only tomorrow.

Scenario 2

- Teachers assigned solely to support remote only students.
- Recorded lessons uploaded daily.
- Frequent daily live interaction with students.
- 5 clock hours of instruction.
- Core subject areas.



Next Steps

- Tomorrow parents will receive an email regarding the remote only option
- Remote only option election period ends July 24
- Parents will be notified of Group A or Group B assignments the first week of August
- A parent FAQ will be developed using questions submitted by the community to return2020@palos118.org



THANK YOU!

