



# CANTERBURY SCHOOL

SUMMER 2020

Parent Checklist  
& Resource



## Fall 2020 Semester

<b>August 31</b>	Student Leaders return
<b>September 2</b>	Sixth Form arrives in PM
<b>September 3</b>	Fifth Form arrives in PM
<b>September 4</b>	Fourth Form arrives in PM
<b>September 5</b>	Third Form arrives in PM
<b>September 6</b>	Orientation Activities
<b>September 7</b>	Classes begin – First Semester
<b>September 12</b>	ACT
<b>September 13</b>	Mass of the Holy Spirit
<b>September 25</b>	Last day to add/drop
<b>October 3</b>	SAT
<b>October 12</b>	Admission Fall Open House
<b>October 14</b>	PSAT
<b>October 24</b>	ACT
<b>October 31</b>	Students depart after commitments
<b>November 3</b>	Boarders return by 7:00 PM
<b>November 4</b>	Classes resume
<b>November 7</b>	SAT
<b>November 21</b>	Students depart after commitments
<b>November 26</b>	Thanksgiving
<b>November 30</b>	Boarders return by 7:00 PM
<b>December 1</b>	Classes Resume
<b>December 5</b>	SAT
<b>December 12</b>	ACT/PreACT
<b>December 17</b>	END OF SEMESTER 1; Students depart after commitments

## Spring 2021 Semester

<b>January 4</b>	Boarders return
<b>January 5</b>	Classes begin – Second Semester
<b>January 19</b>	Last day to add/drop
<b>February 4</b>	Winter Weekend
<b>February 6</b>	ACT
<b>February 8</b>	Boarders return by 7:00 PM
<b>February 9</b>	Classes resume
<b>March TBD</b>	Spring Break
<b>March TBD</b>	Boarders return
<b>March 31</b>	Admission Revisit Day
<b>April 3</b>	Admission Revisit Day
<b>April 4</b>	Easter
<b>April 10</b>	ACT
<b>April 16</b>	Fifth Form College Day
<b>May 8</b>	Admission Spring Open House SAT
<b>May 28</b>	COMMENCEMENT
<b>June 4</b>	Last day of exams END OF SEMESTER 2

\*Subject to change.

More information available: [cbury.org/summer2020](http://cbury.org/summer2020)



### DUE JULY 31

- ☐ **Tuition Payment**  
Please mail in using Canterbury-addressed envelope from billing packet or Attn: Student Billing 101 Aspetuck Avenue, New Milford, CT 06776
- ☐ **Accident Insurance Waiver \*if applicable\***  
Please sign, scan and email to [amcferren@cbury.org](mailto:amcferren@cbury.org) or mail Attn: Student Billing 101 Aspetuck Avenue, New Milford, CT 06776
- ☐ **Debit Card Restriction Form**  
Please sign, scan and email to [debitcard@cbury.org](mailto:debitcard@cbury.org) or mail Attn: Student Billing 101 Aspetuck Avenue, New Milford, CT 06776
- ☐ **Initial Debit Card Deposit**  
Please mail in using Canterbury-addressed envelope from billing packet or Attn: Student Billing 101 Aspetuck Avenue, New Milford, CT 06776
- ☐ **Parent Information Questionnaire**  
Available at [cbury.org/summer2020forms](http://cbury.org/summer2020forms)
- ☐ **Parent Student Handbook Form**  
Available at [cbury.org/summer2020forms](http://cbury.org/summer2020forms)
- ☐ **Magnus Student Health Information**  
Available at [cbury.org/summer2020forms](http://cbury.org/summer2020forms)

### DUE PRIOR TO ARRIVAL

- ☐ **Technology Acceptable Use Policy**  
Available to submit online at [cbury.org/summer2020forms](http://cbury.org/summer2020forms)
- ☐ **Academic Records (new students)**  
Transcript Release Form available at [cbury.org/summer2020forms](http://cbury.org/summer2020forms)
- ☐ **Course Selection**  
Available at [cbury.org/summer2020forms](http://cbury.org/summer2020forms)
- ☐ **Language Placement Test for French or Spanish, if applicable (new students)**  
Available to submit online at [cbury.org/summer2020forms](http://cbury.org/summer2020forms)
- ☐ **AP Summer Assignments, for students enrolled in AP**  
Available at [cbury.org/summer2020forms](http://cbury.org/summer2020forms)
- ☐ **Purchase textbooks**  
Available at [cbury.org/summer2020forms](http://cbury.org/summer2020forms)
- ☐ **Proof of Negative COVID-19 PCR Test**  
Details to follow
- ☐ **Informed Consent Form**  
Available after August 1, 2020 at [cbury.org/summer2020forms](http://cbury.org/summer2020forms)





### Academics

**Suzanne Roberts**

Associate Head of School for Academics  
sroberts@cbury.org

**Kelli Darrin**

Director of Curriculum  
kdarrin@cbury.org

**Wright Danenbarger**

Dean of Faculty  
wdanenbarger@cbury.org

**Anne Zapletal**

Registrar  
azapletal@cbury.org

### The Donovan Center for Learning

**Alison Bailey**

Director of The Donovan Center for Learning  
abailey@cbury.org

**Todd Mathewson**

Director of Academic Counseling,  
Academic Counselor, Fifth and Sixth Forms  
tmathewson@cbury.org

**Amy Milano**

Academic Counselor, Third and Fourth Forms,  
Testing Coordinator  
amilano@cbury.org

### College Counseling

**Sarah Ferland**

Director of College Counseling  
sferland@cbury.org

**Katie Mandigo**

Assistant Director of College Counseling  
kmandigo@cbury.org

### Advancement

**Rick Henderson**

Chief Advancement Officer  
rhenderson@cbury.org

**Jen Loprinzo**

Associate Director of Advancement  
jlopinzo@cbury.org

**Meredith Gal**

Director of Annual Giving and Parent Development  
mgal@cbury.org

### Student Life

**Student Life Office**

860.210.3860

**Peter LaVigne**

Assistant Head of School for Student Life  
plavigne@cbury.org

**Jake Dellorco**

Dean of Students  
jdellorco@cbury.org

**E.J. Soifersmith**

Assistant Dean of Students, Director of Day Students  
esoifersmith@cbury.org

**Gillian Ritter**

Associate Director of Admissions, Co-Director of International  
Students  
gritter@cbury.org

**Tami Devine**

Language Teacher, Co-Director of International Students  
tdevine@cbury.org

### Athletics

**Jim Stone**

Director of Athletics  
860.210.3841  
jstone@cbury.org

**Misi Babington**

Head Athletic Trainer, Associate Director of Athletics  
mbabington@cbury.org

**Padraic McCarthy**

Associate Director of Athletics  
pmccarthy@cbury.org

### Business Office

**Allyson McFerren**

Student Billing Coordinator  
amcferren@cbury.org

**Sharon Michalek**

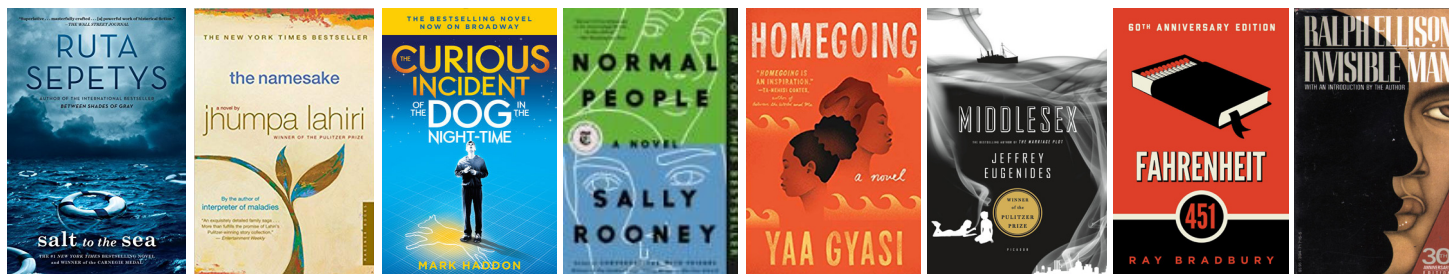
Student Debit Card Coordinator  
smichalek@cbury.org

**Steve Carleton**

Business Manager  
scarleton@cbury.org



## SUMMER READING LIST



### COURSE

### READING LIST

ELEMENTS OF LITERATURE & COMPOSITION

**Salt to the Sea** By Ruta Sepetys

HONORS ELEMENTS OF LITERATURE  
& COMPOSITION

**Salt to the Sea** By Ruta Sepetys  
**The Curious Incident of the Dog  
in the Night-Time** By Mark Haddon

AMERICAN VOICES

**Fahrenheit 451** By Ray Bradbury

HONORS AMERICAN VOICES

**Fahrenheit 451** By Ray Bradbury  
**The Namesake: A Novel** By Jhumpa Lahiri

FIFTH & SIXTH FORM ELECTIVES

**Normal People** By Sally Rooney

LIT. OF VIETNAM CONFLICT • ROMANTICISM • CREATIVE WRITING •

HONORS NATURE IN LITERATURE • POST-INDUSTRIAL LITERATURE •

SUPA GENDER & LITERARY TEXTS • HONORS RACE THEORY •

HONORS POST-COLONIAL LITERATURE •

SHAKESPEARE • COLLEGE WRITING

HONORS RACE THEORY

**Normal People** By Sally Rooney  
**Homegoing** By Yaa Gyasi

HONORS POST-COLONIAL LITERATURE

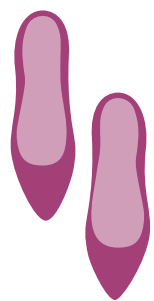
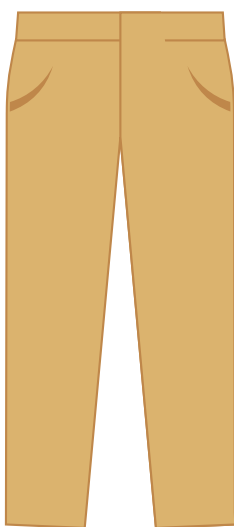
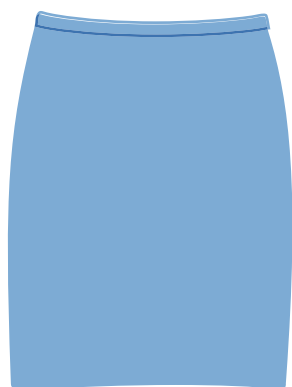
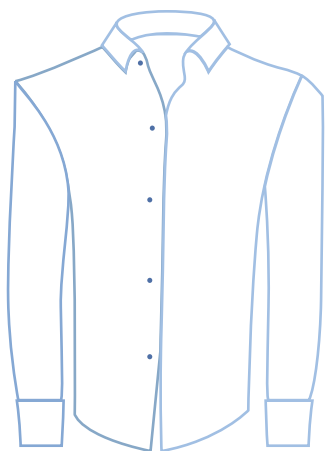
**Normal People** By Sally Rooney  
**Things Fall Apart** By Chinua Achebe

AP ENGLISH LANGUAGE

**Normal People** By Sally Rooney  
**Invisible Man** By Ralph Ellison

AP ENGLISH LITERATURE

**Normal People** By Sally Rooney  
**Middlesex** By Jeffrey Eugenides



EVERYTHING YOU NEED TO KNOW:  
**[CBURY.ORG/DRESSCODE20-21](http://CBURY.ORG/DRESSCODE20-21)**

### CLASSROOM DRESS

During the Academic Day: from 8:00 a.m. - 3:30 p.m. Monday, Tuesday, Thursday, Friday; from 8:00 a.m. - 12:30 p.m. on Wednesday and Saturday; and, during Sunday Mass and Brunch.

### SPIRIT DRESS

May be announced in conjunction with a sporting event or in the event of bad weather in the winter term.



## What to bring

### ITEMS PERMITTED

- ✓ 5-10 Cloth masks (**required**)
- ✓ Shower caddy (**required**)
- ✓ Thermometer (**recommended**)
- ✓ Pillow
- ✓ Blankets (2 or 3)
- ✓ Bedspread or comforter
- ✓ Sheets (twin XL) & pillow cases
- ✓ Hand, face, and bath towels
- ✓ Laundry bag
- ✓ Desk lamp
- ✓ Clock
- ✓ Umbrella
- ✓ Athletic gear
- ✓ Reusable water bottle

### ITEMS NOT PERMITTED

- ✗ Monitors larger than 30"
- ✗ Posters and other room decorations that are disrespectful or distasteful, or celebrate alcohol or other drugs
- ✗ Hot plates, toaster ovens, microwave ovens and coffee makers
- ✗ Space heaters of any kind
- ✗ Water coolers
- ✗ Pets