

The image shows the exterior of the Otto Armleder Memorial Education Center, a large brick building with a classical portico. The portico features several tall, fluted columns supporting a decorative entablature. Arched windows are visible between the columns. Green tree branches are in the foreground, partially obscuring the top and left sides of the building.

Otto Armleder Memorial Education Center Reopening Plan 2020-2021

**Celebrating 20 years
as a “Light in the City”**

**But those who hope in the Lord will
renew their strength... They will soar
on wings like eagles.**



Isaiah 40:31

CHCA's Response to Ohio's Color-Coded Advisory System

In School
5 Days a Week



Remote Learning
5 Days a Week



Level 2 Orange

The school is open 5 days a week with face coverings and social distancing being strongly encouraged in grades 4-6 for students but mandatory for adults in the buildings.

Level 3 Red

The school continues to stay open 5 days a week with face coverings and social distancing required at all times in order to follow all current health orders from the state.

Level 4 Purple

The State may close the school and we shift to Remote Learning until we are permitted to re-open.

Armleder Learning Options

These options are not offered in the Early Learning Program.

In Person Learning Option

Remote Learning Option (available by quarter, must choose by 7/20)

I'm Healthy	I'm Sick or Quarantined	Full Remote Option
Student attends classes in person 5 days a week.	Student transitions temporarily to remote learning until healthy enough to return to school or quarantine completed. This will be asynchronous and synchronous learning via Zoom. There are 360 degree SWIVL cameras in every classroom to help capture teaching from anywhere in the room.	Student opts to learn remotely 5 days a week. This is a quarterly option. Classes will be a combination of asynchronous and synchronous via Zoom, dependent upon the teacher and the content each day. There are 360 degree SWIVL cameras in every classroom to help capture teaching from anywhere in the room. Remote learning students can participate in all extracurricular activities.

Early Learning Program (PK3/4-Kdg.)
Lower Elementary (Grades 1-3)
Upper Elementary (Grades 4-6)

Safety Protocol

Choose MORE.

Enhanced Cleaning

- Increased cleaning of high-touch zones will occur throughout the day.
- Nightly cleaning will follow The Ohio Department of Education guidelines.
- Additional hand sanitizing stations throughout rooms and halls.
- Students will have increased opportunities for hand washing throughout the day.



Face Covering

Our goal is to protect each other while keeping the school open. We protect each other by wearing face coverings. Face coverings help us to accomplish this goal.



- We will follow The Ohio Department of Education guidelines for wearing face coverings at school.
- Faculty/Staff will wear face coverings at all times, unless alone in their classroom.
- Face masks, neck gaiters, and face shields are acceptable. Please refrain from wearing masks that could be a distraction to the learning environment.

Entering the Building

- Parents are expected to take their child's temperature at home prior to coming to school. If your child is fever and symptom free for 48 hours without medication, he/she may come to school.
- As an additional safety precaution to keep our school open, CHCA has purchased Rapid Screen Access Control Thermometers (RSACT) that will be installed at the vestibule (front entrance, between the double doors).
- All adults and students will be required to walk through the temperature check station as they enter the building. If the machine reads a temperature of 100 degrees or greater, a message will be sent immediately to the school nurse for further assessment. All adults entering the building will also sign-in using the normal protocol.
- Staff will be stationed at the entrance to walk the student(s) with a temperature to the nurse as discretely as possible.



Volunteers, Visitors, and Guests

We value our parent volunteers, visitors, and guests. However, in order to keep our school open, we must reduce the number of people entering the building at this time.

- Anyone entering the building will be expected to follow The Ohio Department of Education guidelines for wearing face coverings and having their temperature taken.
- Volunteers will not be working with students. A limited number of volunteers will be used in the building and must be approved by the building principals.
- If volunteering or visiting, all adults will be required to wear face coverings while in the building to stay consistent with the policy for staff.

Mass Gatherings and Field Trips

- Per The Ohio Department of Education guidelines for school reopening, field trips need to be rescheduled or canceled throughout the first semester of the 2020-2021 school year. These events will be reviewed for the second semester.
- Mass gatherings (assemblies, chapels, etc.) must be small group or remote.

Water Bottle Procedure



- All students are asked to provide a personal water bottle marked with their name.
- Drinking fountains will only be used to refill student water bottles.

Before and After School Care



- Before and After School Care will continue to be provided. See specific building plans for more details.

Cafeteria and Recess

- Students will eat in the classrooms most of the time throughout the first semester of school. *Preschool students will always eat in the Piazza.
- Building principals will provide the opportunity for Kindergarten – Grade 6 students to eat in the cafeteria on a scheduled rotation.
- In order to limit contact, there will be no visitors for lunch at this time.
- Recess will be offered each day of school.
- Students will be stationed at recess by classroom cohorts/homerooms. This will apply to both outdoor and indoor recess.




Carpool/Drop-Off/Pick-Up

- Curbside drop-off and pick-up is preferred. Parents that wish to come into the building must wear a face covering and walk through the RSACT scanner. See building specific guidelines.
*Preschool parents must come into the building to sign student in and out for pick-up and drop off.
- Students will be socially distanced during carpool to the best of our ability. See building specific guidelines for face covering procedures.





COVID Positive Protocol

- By law, a 1A classified virus is contact traced by the Hamilton County Health Department. This is managed by the HCHD, not CHCA. Should the HCHD contact your family, your child will be required to quarantine for a minimum of 10 days with the last 48 hours being symptom free. Students can attend class remotely through Zoom during the quarantine.
 - If a fever is identified while entering the building or during the school day, the student will be assessed by the school nurse in a designated location within the building and parents will be notified.
- 

Armleder Campus School Procedures

Principal: Cammie Montgomery

Choose MORE.



Entering/Exiting

- **Morning Arrival:** Doors open at 7:25 a.m. Students will have temperature checked and use hand sanitizer upon arrival.
 - Students will report to their classrooms.
 - News Team will report to the newsroom.
- **PM Carpool:** Students will dismiss from second floor by carpool number assigned to each family.
 - Parents will drive with family number displayed visibly on the visor.
 - Student will be escorted to car by staff.
 - Parents not using the drive thru pick up may remain on the sidewalk, after reporting their family number to staff. Student will meet parent on the sidewalk.
- **PK3/4 and PK4/5:** Parents must come into the building for drop off and pick-up each day. Upon entering the building, they must wear face coverings, have their temperature taken, and remain socially distanced at all times.

Before School Procedures

Keeping students safe by following CDC guidelines, minimizing traffic flow in halls, and to reduce gathering at cubby areas.

- School begins at 7:50 a.m. for grades K-6.
- School begins at 8:00 a.m. for grades PK3/4 and PK4/5.
- The outside doors will be unlocked at 7:25 a.m.
- Students will report directly to their classroom/homeroom without visiting cubbies/lockers. Teachers will stagger cubby/locker visits by allowing a few students to go at a time.
- Students will be asked to remain socially distant during this unstructured time.

In Class Procedures

Our goal is to keep each child safe, while offering the same robust CHCA curriculum and experience you have come to know.

Plexiglass has been approved by the State as a substitute for social distancing. Therefore, each classroom will have Plexiglass stations.

Level 2 Orange

- All students are strongly encouraged to wear face coverings, especially when not working in Plexiglass stations.
- All staff and visitors wear face coverings when not working alone in the classroom.
- Teachers and staff will monitor release of classes during transitions or at dismissal times.
- Students will eat in their classrooms most days; however, individual classrooms will have opportunity to eat in the cafeteria on a rotating basis, socially distancing.
- Reduced number of volunteers and guests in the building.
- Recess divided into Stations to keep students with their cohort groups.

Level 3 Red

- Ohio Department of Education states that all students ages 10 and up are required to wear face coverings at all times. This includes working behind Plexiglass work-stations. Therefore, students in 3rd grade and below will not be required to wear face coverings at all times. However, they are strongly encouraged. Outdoor recess is excluded from this guideline.
- Locker/cubby visitation will be dramatically reduced.
- All other procedures will be the same as when in orange, with the exception stated above.

Level 4 Purple

- The State of Ohio may close the school and we shift to Remote Learning until we are permitted to re-open.

Armleder Chapel

- This year chapel will be a smaller more intimate experience that will take place within the classroom.
- ELP Chapel will be streamed into the individual classrooms on Friday mornings from 9:50 a.m. – 10:10 a.m.
- Chapel Grades 1-6 will be streamed into the individual classrooms on Friday mornings from 10:45 a.m. – 11:15 a.m.
- Chapel will include a video introduction from a guest speaker in the community, including local pastors, CHCA staff, parents, or others will share a message with our students.
- Worship music will be included as a part of the video presentation.
- One class will share the weekly Memory Verse during each chapel service.
- Chapel videos will be shared on the Virtual Armleder webpage to further build a connection between school and home.





Physical Education

- Physical Education class will either be held in the gymnasium where there is abundant room for distancing or will be held outside, weather permitting. When in **Red**, PE activities will focus more on individual fitness and health to minimize the physical contact that some team sports require.
- Students will wash hands or use sanitizer before and after PE class.

Library and Digital Literacy

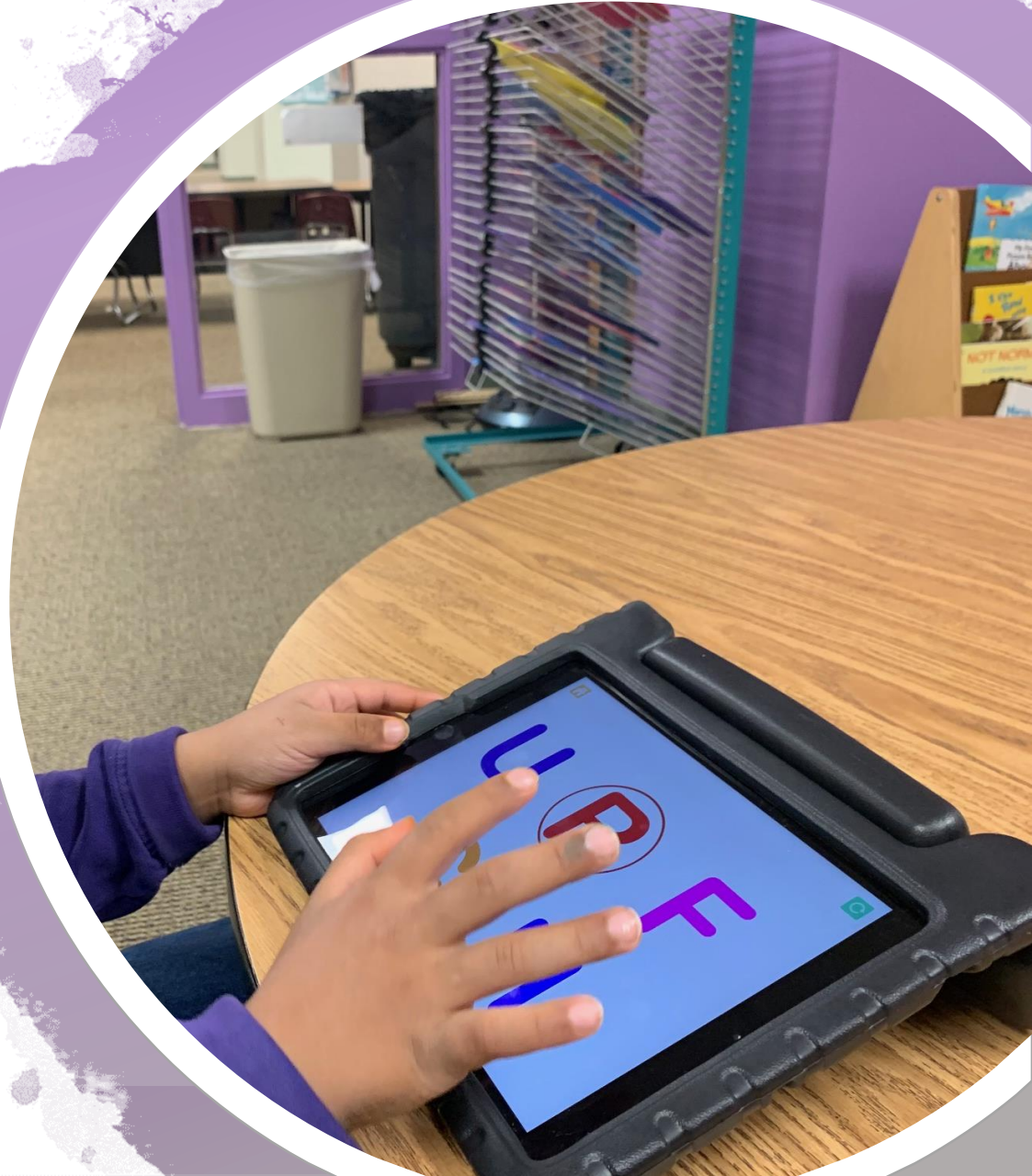
Students will have both Library and Digital Literacy either remotely or in person. The school will follow CDC distancing guidelines and wear face coverings.

Library

- In PK 3/4 and PK 4/5, the teacher will remote into the classroom for library. For grades K-3 the teacher will come to the students' home rooms for library
- Students will be able to check out books for enjoying at school.

Digital Literacy

- For grades K-6, students will come to the technology lab for class.
- Grades K-3 will use the laptops in the lab with disinfecting between each class.
- Grades 4-6 will use their school assigned laptops.



Science Technology Engineering Art Math (STEAM)

- Grades 3-6 STEAM class will be held in the STEAM room
- Face coverings will be strongly encouraged.



Art and Music

- The school will follow CDC guidelines of 6-foot distancing when wearing face coverings and 10-foot distancing when singing.
- The Early Learning Program will have Music and Art.
- Grades K-6 Music and Art classes will be held in the music room and the art room respectively.
- Face coverings will be strongly encouraged.



Recess

Students will be separated into lunch/recess cohorts by homeroom. Grade levels will have separate recess stations to rotate. The goal is to prevent students from over-mingling and increasing the possibility of spreading COVID.

Outdoor Recess	Indoor Recess
Station 1: Playset	Station 1: Gross Motor Room (ELP)
Station 2: Blacktop Playground Area	Station 2: Rm 303 (Lower E)
Station 3: Enclosed Field	Station 3: Leadership Room (Upper E)

The Achiever's Program After School Care

- PK – Grade 6 students who are pre-registered may attend After Care from 3:10 p.m. to 5:30 p.m.
- PK-Kdg After Care students will remain on the first floor in their cohort groups as much as possible. Students will have prayer, snack, and do small group activities or play outside weather permitting.
- Grades 1-6 After Care will be held on the fifth floor in the Achiever's Room, Gym and Cafeteria. Students will be grouped with their classroom cohorts as much as possible. Students begin with a snack and devotion time. Then students will work on homework or participate with various activities. Students will go outside to play during some portion of the After Care time.





We are looking forward to starting the school year.

See you very soon!