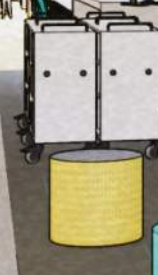




Carrollton-Farmers Branch ISD

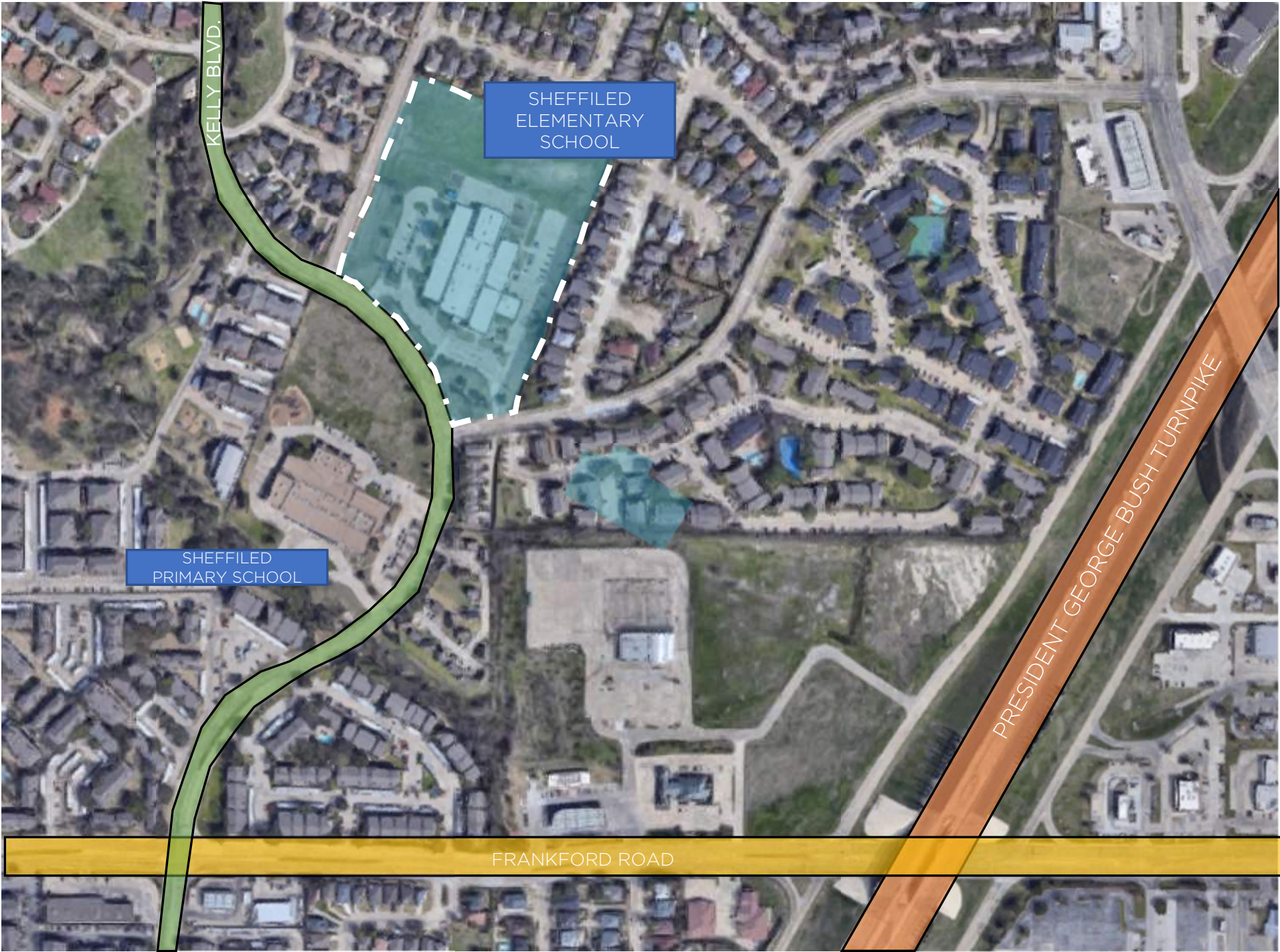
Sheffield Elementary school

BETHE
EXCEPTION
TOGETHER WE CAN



Sheffield Elementary School

Location



NEAR THE INTERSECTION OF
PRESIDENT GEORGE BUSH TURNPIKE
AND FRANKFORD ROAD IN
CARROLLTON, TEXAS.

Sheffield Elementary School

Site Plan



- ↑ MAIN ENTRANCE
- BUS DROP OFF
- OUTDOOR LEARNING / PLAY

Sheffield Elementary School

Traffic Flow



- PARENT ENTRANCE ON TIMBERGLEN ROAD
- BUS ENTRANCE ON TIMBER OAKS DRIVE
- NO TRAFFIC ON KELLY BULLIVARD
- ALL TRAFFIC WILL EXIT ONTO TIMBER OAKS DRIVE

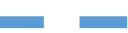



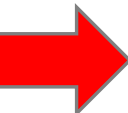
-  PARENT DROP OFF / PICK UP
-  BUS DROP OFF / PICK UP

Sheffield Elementary School

Staging Plan - Construction



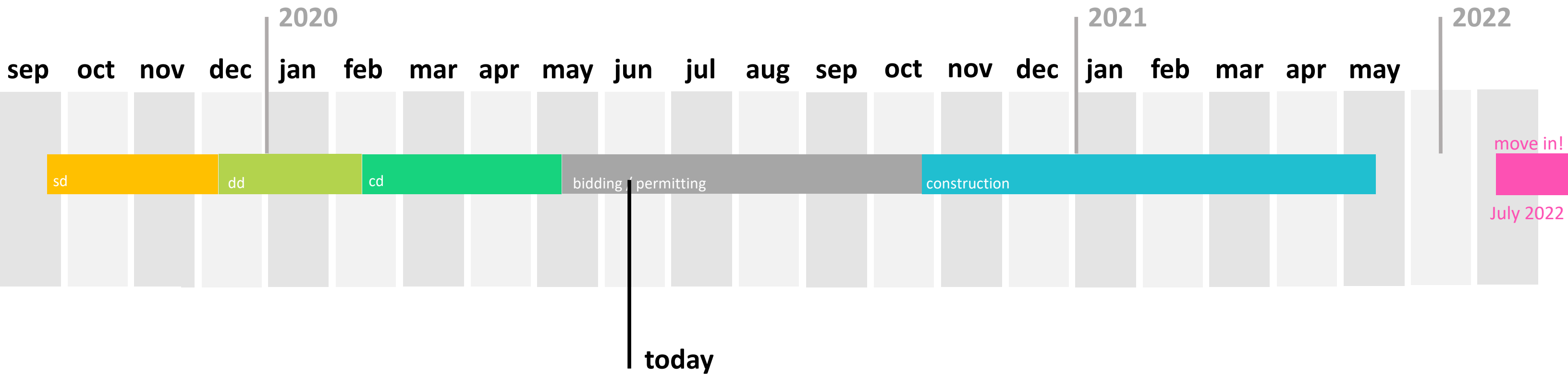
- PRIMARY CONSTRUCTION ENTRANCE TO BE LOCATED AT EXISTING SCHOOL EXIT.

-  LAYDOWN / FLEXBASE WITH FABRIC
-  JOBSITE FENCING FOR SECURITY / SAFETY
-  JOBSITE TRAILOR
-  ROCK CONSTRUCTION ENTRANCE
-  PRIMARY CONSTRUCTION ENTRANCE

Overall Project Schedule

Design/CDs: September 2019-May 2020
Bidding/Permitting: May 2020-October 2020
Construction: October 2020-May 2022

- Schematic Design
- Design Development
- Construction Documents
- Permitting
- Construction
- Occupancy



Exterior – Front Entrance



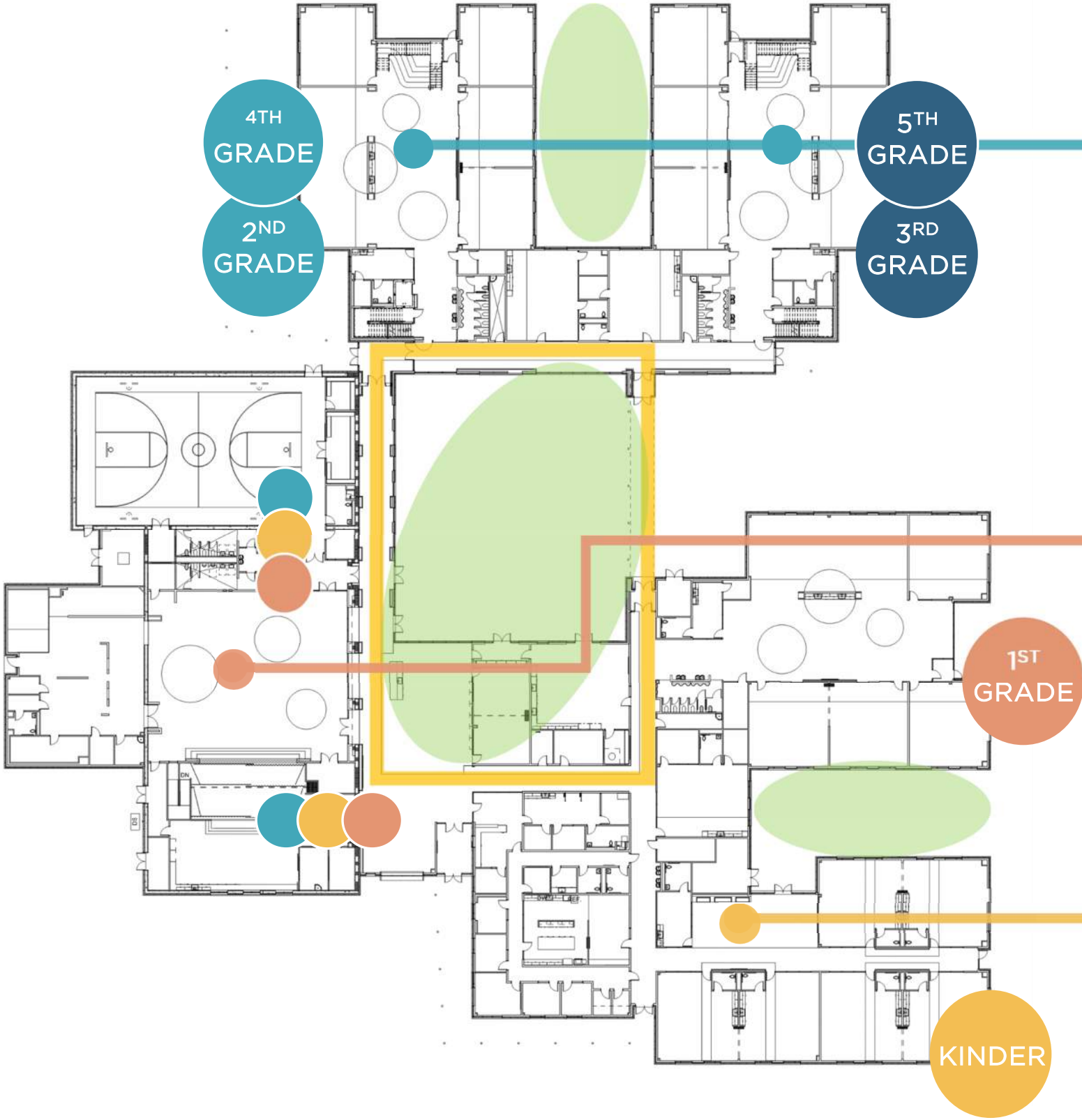
Exterior- Courtyard



Exterior – Bus Drop Off



Floor Plan



QUESTIONS?

PLEASE SUBMIT YOUR QUESTIONS AND COMMENTS TO
FACILITY SUPPORT SERVICES AT 972-968-6300



Exterior - Courtyard

