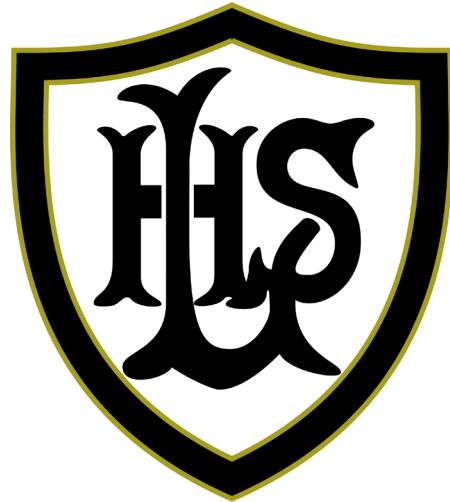


Lynch Hill School September 2020

Aim high, work hard, care deeply



Foreword from Mrs Tomlinson

I cannot wait to welcome you all in September and hope that it will be the start of a school year filled with amazing opportunities, new challenges and endless fun.

Each day, I feel very grateful and extremely proud that I am the Headteacher of this school: a school where our vision is to '***Aim High, Work Hard and Care Deeply***'. It is important to know that this isn't just an expectation for the pupils, every adult in the school has to do this too. If we are all aiming high, working hard and caring deeply, then Lynch Hill School is a place where anything is possible, where targeted outcomes are achieved and the support and commitment is there to enable everyone to develop, to grow and to experience what success feels like.

I want this new school year to be a year where you make the most of all that is on offer at Lynch Hill, where you are able to embrace challenge and one where you feel brave enough to try new things. You are not alone; we are on this journey together.

A Welcome to Reception

The Reception year will be the most important school year of your child's life. It is part of the foundation stage in your child's learning journey.

As a parent, you are your child's first educator, and your home is their first learning environment. It is here that firm foundations are laid to build a sense of emotional security and resilience. After their home, school is the next most important place for most children. The experiences at school play a vital part in children's lives, determining their academic, social and possibly occupational futures.

That's why it's so important to get it right from day one. It is generally accepted that children's early experiences have the biggest impact upon their later life. In the first five years children develop physically, cognitively and emotionally at a faster rate than at any other time.

The Reception curriculum

In the foundation stage there are three prime areas of learning and four specific areas of learning.

Areas of Learning and Development			
Prime Areas			
Personal, Social and Emotional Development	Physical Development	Communication and Language	
<ul style="list-style-type: none">• Making Relationships• Self-confidence and Self-awareness• Managing Feelings and Behaviour	<ul style="list-style-type: none">• Moving and Handling• Health and Self-care	<ul style="list-style-type: none">• Listening and Attention• Understanding• Speaking	
Specific Areas			
Literacy	Mathematics	Understanding the World	Expressive Arts and Design
<ul style="list-style-type: none">• Reading• Writing	<ul style="list-style-type: none">• Numbers• Shape, Space and Measures	<ul style="list-style-type: none">• People and Communities• The World• Technology	<ul style="list-style-type: none">• Exploring and Using Materials and Media• Being Imaginative

The Staff in Reception



Mrs
Barber



Ms
Dyde



Mrs
Goubert



Mrs
Khan



Mrs
Tobin



Miss
Price

The Staff in Reception



Mrs
Creed



Mrs
Richardson



Mrs
Reeves



Mr
Bailey

Welcome to Turtle class (RB)

- ▶ Mrs Goubert will be your teacher on a Monday and Tuesday and Mrs Barber will teach you on a Wednesday, Thursday and Friday.

Five fun facts about Mrs Goubert:

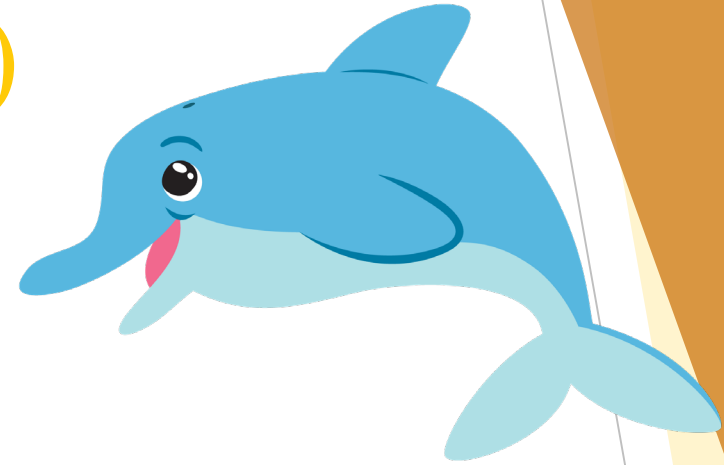
- ▶ I love drawing, painting and colouring.
- ▶ At home we have 6 people in my family, 2 adults, 4 children, plus there are 3 turtles and a tank full of fish including fry (baby fish).
- ▶ My favourite film of all time is 'The lion, the witch and the Wardrobe'
- ▶ I love growing plants from seeds, one of my favourite flowers to grow are Sunflowers.
- ▶ To relax and unwind, I enjoy listening to calming music and practise meditation at the end of the day.

Five fun facts about Mrs Barber:

- ▶ I am a twin
- ▶ I love Disney films.
- ▶ I enjoy cooking and finding new recipes.
- ▶ I enjoy gardening.
- ▶ I like to keep active by going on cycling adventures.



Welcome to Dolphin class (RD)



5 fun facts about Ms Dyde:

- ▶ My favourite colour is green.
- ▶ I have two cats called Florence and Matilda.
- ▶ I like to take my Greyhound 'Pearl' for long walks.
- ▶ I love to sing and dance.
- ▶ I like to spend time in my garden planting, building and making it look pretty.

Welcome to Jellyfish class (RK)

5 fun facts about Mrs Khan:

- ▶ I love visiting my family and seeing my 2 brc
- ▶ I enjoy meeting up with my friends for days out
- ▶ I love going to the theatres
- ▶ I find singing fun even though I sometimes get the words muddled up!
- ▶ I love reading books, The Gruffalo is one of my favourite stories!



Welcome to Seahorse class (RP)



5 fun facts about Miss Price:

- ▶ I love spending time with my family and friends, especially going camping. It is so relaxing and peaceful.
- ▶ I enjoy going for afternoon tea and making afternoon tea for my family and friends. I love to bake them nice treats for us to share.
- ▶ I really enjoy gardening and planting and sowing seeds, especially vegetables.
- ▶ I use my sewing machine to make personalised gifts and like to make special cards for celebrations.
- ▶ I love stationery and often have lots of notebooks that are too pretty to use!

Our Classrooms and our unit

- ▶ Below are photos of our shared garden and an example of one of our four classrooms. Please refer to our Reception virtual tour on our school website for a more in-depth look.



Parental engagement

- ▶ Your support is key to the effectiveness of your child's learning. We believe strongly in parent partnership. Here are the types of things you can be doing at home to support your child's development;
- ▶ Encourage speaking and listening activities and play.
- ▶ Taking turns and sharing through playing games such as snakes and ladders.
- ▶ Encourage them to develop self-help skills such as blowing noses, flushing toilets, washing hands, dressing and undressing, using a knife and fork.
- ▶ Reading stories to your child daily.
- ▶ Going to the Library to explore books.
- ▶ Cutting, drawing, painting and play-doh activities.

Parental engagement

All evidence suggests that when a parent is engaged in a child's education it has more impact than the quality of the school. In reception we will send weekly phonics homework for your child according to their stage in the Read, Write inc. scheme. We will also provide additional topic and Maths related activities. Your child will also have the opportunity to take home a book to share with you.



Tapestry - Online learning journals



Tapestry is an online tool used to record your child's learning journey. It builds a very special record of a child's experiences, development and learning journey through their early years and primary education. Using photos, videos and diary entries, a teacher or early years practitioner, along with the child's parents, 'weaves' the story of the child and how they are growing and developing.

The Tapestry platform then works seamlessly to enable these memories to be kept as a permanent record of each child's unique journey. All information held in the platform is stored securely, and can be downloaded and shared as required. Parents are able to view online their child's progress and how much fun they're having, whilst also uploading their own comments and media.

A screenshot of the Tapestry Online Learning Journal interface. The top navigation bar is blue and contains links for "Observations", "Children", and "Tracking". On the right side of the bar, there is a user profile icon for "C Barber". The main content area displays a list of four observations, each with a small photo, a title, a date and time, the author, a description, and a list of tags. The observations are: 1. "Riding on a scooter" (20 Mar 2018 01:58 PM by J Price), 2. "Climbing challenge in PE" (20 Mar 2018 01:51 PM by J Price), 3. "Green water." (19 Mar 2018 02:46 PM by V O'Connor), and 4. "Magnets." (14 Mar 2018 04:46 PM by V O'Connor). Each observation has an "Edit" button and a settings icon. The interface is decorated with a blue grid pattern on the left and right sides and a green grass graphic at the bottom.

Equipment

- ▶ Book bags are needed to carry important information such as letters, homework and the newsletter.
- ▶ Lunch box
- ▶ A waterproof coat and wellies that can stay in school. In Early years we do a lot of learning outdoors and it is vital that your child is dressed for all weathers.



PE Kits

- ▶ A plain or school yellow T shirt, black shorts, black leggings and a change of trainers for outdoor games.
- ▶ Black or grey tracksuit for outdoor games.

Please ensure you label any equipment with your child's name!

Breakfast club, Fun Zone and after school clubs

Breakfast Club

- ▶ Breakfast club doors are open between 8.00am and 8.25am. The child enters through the double white doors at the end of the Year 1 classrooms.
- ▶ Breakfast club is open to all and can be paid for, in advance, online.

Fun Zone

- ▶ Fun Zone is an after school supervised club that runs from 3.15pm until 5.45pm. Spaces are limited so places need to be applied for via the school office.

After-school clubs

- ▶ We offer a variety of after-school activities which can be sport-based, crafts and many others. A letter is sent out prior to each half term to allow you to apply for these.
- ▶ Spaces are limited so giving every child one club per half term is the first priority.

The school day

- ▶ 8:35 Classroom doors open
- ▶ 8:50 Classroom doors close. The register is taken and the days learning begins.
- ▶ 9:00 - 10:00 Phonics and free choice
- ▶ 10:00 - 11:00 The Garden is open and children are in continuous provision
- ▶ 11:00 - 11:25 - Interest time
- ▶ 11:30 - 12:30 Lunch time
- ▶ 12:35 - 13:00 Maths
- ▶ 13:00 - 14:20 The garden is open and children are in continuous provision
- ▶ 14:30 - 15:00 - Story time
- ▶ 15:00 - 15:10 Doors open for home time

P.E. Is once a week an usually takes place on a Friday morning.



Trips

- We love to visit Bucklebury Farm during the Summer term. We take two classes a day and we have the most wonderful time meeting the friendly Farm animals and learning lots of new things. We also enjoy taking termly trips to our local Bluebell Woods.



FAQs

- ▶ How do you assess the children in reception?

We use the early years outcomes when planning learning opportunities. We observe your child through play and collect evidence from parents, teachers and other adults working closely with your child. You will receive a profile at the end of reception detailing your child's attainment, progress and learning journey.

- ▶ What phonics scheme does the school use?

The school have invested deeply into the read, write, inc. scheme. We strongly believe in this reading scheme as take great pride in seeing the children accelerate in their reading skills. We offer phonic workshops for parents and provide useful online resources.

- ▶ Will there be parent interviews this year?

We have scheduled in these and will ensure appropriate safety measures are in place prior to these taking place. If there is any change to these plans, we will communicate this to the parents as soon as we are able.

FAQs continued...

► Do you have a school menu?

Yes, we provide a weekly menu on our schools newsletter which you can find on our school website. We also have a vegetarian option. If your child would prefer to have a packed lunch please remember that we are a nut and seed free school. Also, please ensure you provide healthy options for your child.

► How often can I meet with the class teacher?

Your child's class teacher will be available to meet and greet your child daily. If you need a longer conversation with them then please arrange a meeting through the school office. There will be two parent interviews throughout the year to discuss your child's well being and progress.