

JIS

Jakarta Intercultural School

High School Learning Models



Learning Models

Model 1: On Campus (Face-to-Face) Learning

This learning model resembles the pre-pandemic JIS school experience. Students attend school in person and on campus. A comprehensive academic program is delivered through research-based teaching and learning approaches and students engage in purposeful, relevant, and challenging learning experiences and opportunities. Students interact with teachers and peers and learn within supportive and interactive classroom learning environments.

Students will attend school in person and be on campus per the regular High School 10-day rotating schedule, including the Friday late start as shown below.

Block	Monday - Thursday Time	Friday Late Start Time
1	7:30 - 8:45	8:20 - 9:20
Passing Time		
2	8:55 - 10:10	9:30 - 10:30
Break		
3	10:25 - 11:40	10:50 - 11:50
Lunch/Assembly	11:40 - 12:20	11:50 - 12:50
4	12:20 - 13:35	12:50 - 1:50
Passing Time		
5	1:45 - 3:00	2:00 - 3:00
After School (Sports, Activities, Clubs, Service)	Varies	Varies

Specifics of this learning experience include:

- Students will be assigned to a SLA class designed to support students in their learning journey and help foster the social and emotional growth of students.
- Classrooms will have a maximum of 18 students and will be set up according to physical distancing protocols.
- Students will receive instruction according to their selected/required courses.
- PE courses/physical activities will be modified based on any government restrictions.
- Social distancing rules will be applied during breaks, lunch, and Honor Pass.
- After school activities will be dependent on government mandates.

Model 2: Home and Online Learning

This learning model assumes that all students will not be on campus and that learning will be conducted through virtual approaches. The **enhanced** virtual platform will continue the High School's comprehensive academic program to engage students in purposeful, relevant, and challenging learning experiences and opportunities. Students interact with teachers and peers and learn within supportive and interactive online classroom learning environments. All classes will be **synchronous** and teachers will teach classes via **live** Zoom or Google Meet sessions aligned with the student's 10-day rotation and the schedule shown below.

Block	Monday - Thursday Time	Friday Late Start Time
1	7:30 - 8:35	8:20 - 9:20
2	8:55 - 10:00	9:30 - 10:30
3	10:25 - 11:30	10:50 - 11:50
Lunch	11:30 - 12:20	11:50 - 12:50
4	12:20 - 1:25	12:50 - 1:50
5	1:45 - 2:50	2:00 - 3:00
Virtual After School (Sports, Activities, Clubs, Service)	Varies	Varies

Specifics of this learning experience include:

Dedicated Synchronous Learning Environment

Teaching and learning, as well as social interactions, occur in real-time. The teacher is present online at the same time as the student learners are online. Synchronous lessons, meetings, and sessions will occur via the Zoom or Google Meet video-conferencing platform.

- All teachers will be in Jakarta and conduct classes according to the High School schedule (Jakarta time zone).
- **Students will learn in a live Zoom or Google Meet based environment** aligned with the student's 10 day schedule.
- **Teachers will provide live lessons and meetings**, as well as structured time for students to ask questions, engage in learning activities, and be part of collaborative discussions and/or group work. Typical lessons will be 45 minutes of instructional time followed by 20 minutes to ask questions.
- Students will be required to attend all classes according to the school schedule.
- All lessons will be recorded in case students would like to review material or engage with the lessons at their own pace.

Additional Asynchronous Elements

Building from the synchronous learning environment, teachers will use a variety of methods to further enhance a student's learning experience. This includes videos, recordings, tasks, activities, and projects. Students will have the opportunity to engage in these materials and work at their own pace.

Service Learning, Community Connections and Support

Once per rotation (Day X), students will engage in activities that build student community and spirit, ensure JIS' commitment to service learning, foster student well-being and provide opportunities for structured additional support necessary for student success.

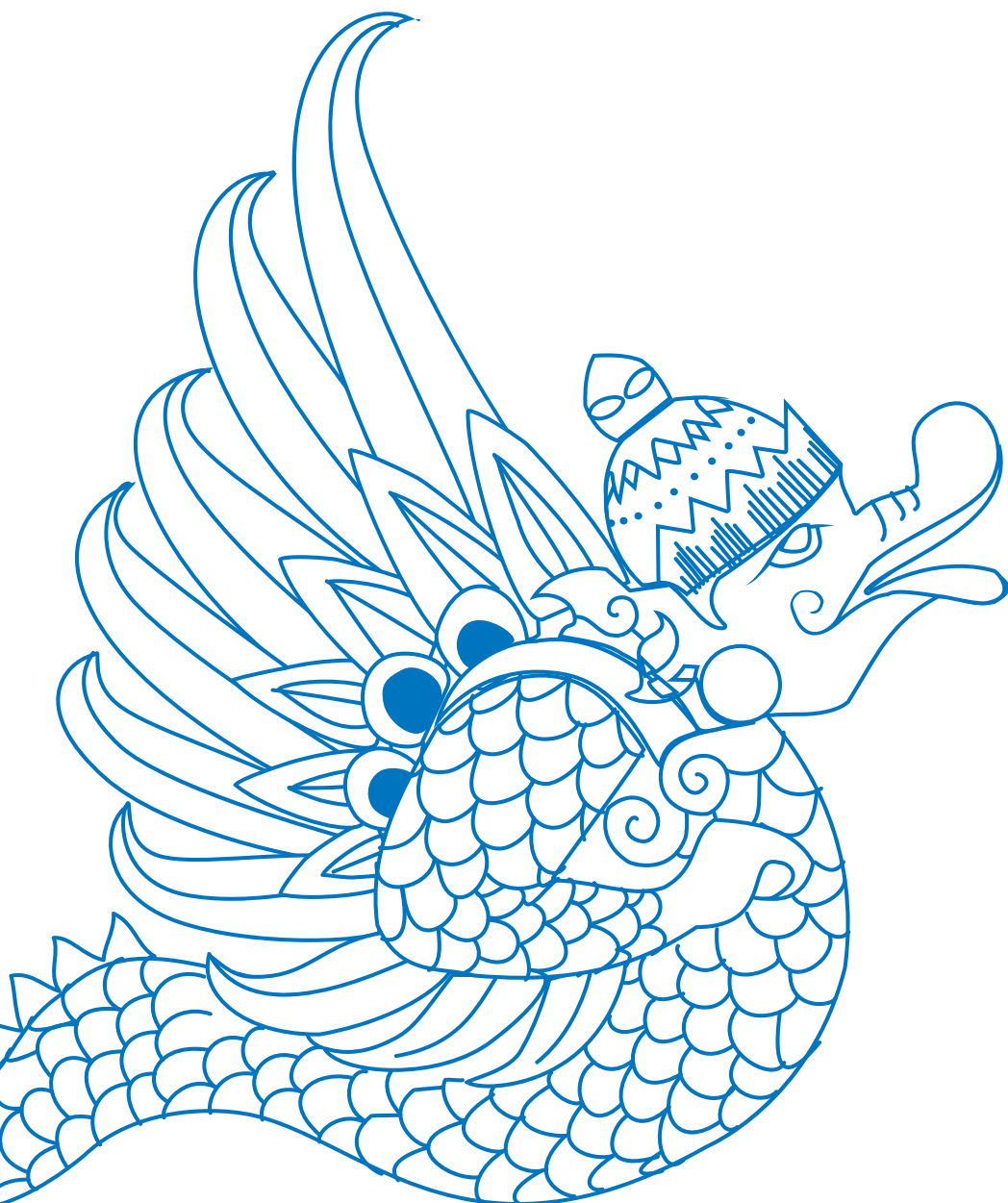
Learning Platforms

- Learning will be supported through the use of Google Classroom.
- Zoom or Google Meet will be the primary video-conferencing platforms.

Child Safeguarding

Due to the specific nature of Home and Online learning, the following guidelines to support child safeguarding will apply:

- When communicating digitally with students, only JIS approved modes of communication may be used (Google Classroom, JIS email accounts, etc).
- Teachers and students will not be permitted to use personal accounts or social media (including WhatsApp) for any direct contact or communication.
- Students may opt out of video options during online meetings. Students should inform the teacher ahead of time if they have a concern being on video.
- Student 1:1 online meetings with any JIS employee/teacher will be recorded.



Model 3: Blended Learning

The campus will be open, although not all students will be on campus at the same time in order to comply with health/safety requirements for capacity limits. Learning will combine face-to-face on-campus learning experiences with coordinated off-campus home and online learning experiences.

In the event that JIS needs to move to a Blended Learning model, High School students will have variations to their day and program by:

- Alternating groups of students at school according to the schedule below.
- The Home and Online Learning model would occur on the day that students are not physically on campus.

On Campus Learning Days / Schedule

Grade 12 on campus every day

Grades 9, 10 and 11 on campus on alternate days

Block	Monday - Thursday Time	Friday Late Start Time
1	7:30 - 8:45	8:20 - 9:20
Passing Time		
2	8:55 - 10:10	9:30 - 10:30
Break		
3	10:25 - 11:40	10:50 - 11:50
Lunch	11:40 - 12:20	11:50 - 12:50
4	12:20 - 1:35	12:50 - 1:50
Passing Time		
5	1:45 - 3:00	2:00 - 3:00
After School (Sports, Activities, Clubs, Service)	Varies	Varies

Home and Online Learning Days / Schedule

Grades 9, 10, and 11 online on alternate days

Block	Monday - Thursday Time	Friday Late Start Time
1	7:30 - 8:35	8:20 - 9:20
2	8:55 - 10:00	9:30 - 10:30
3	10:25 - 11:30	10:50 - 11:50
Lunch	11:30 - 12:20	11:50 - 12:50
4	12:20 - 1:25	12:50 - 1:50
5	1:45 - 2:50	2:00 - 3:00
Virtual After School (Sports, Activities, Clubs, Service)	Varies	Varies

Specifics of this learning experience include the combination of both Model 1 and Model 2 noted above.

Flexible and Enhanced Asynchronous Home and Online Learning



Special note to families who are unable to return immediately back to JIS

JIS will accommodate and meet the needs of families that are unable to return, or who choose not to return immediately back to campus through a **flexible and enhanced** Home and Online Learning program. The Home and Online Learning program will ensure that students engage in a strong educational program with similar expectations, learning outcomes, and experiences within a supportive, caring, and nurturing environment.

Students will be able to rejoin the on-campus learning program at any time upon return and reintegrate back into the face-to-face learning environment. Social and emotional support, as well as strategies, will be provided by a dedicated team during the reintegration phase. Details are listed below.

Students outside of Jakarta or unable to physically be on campus will receive asynchronous instruction via the following modified schedule. *This schedule applies to each of the three Learning Models.*

Specifics of this learning experience include:

- Students do not have to attend the scheduled Jakarta time class.
- All classes are fully credit bearing assuming attendance and assignment submission requirements have been met.
- Students will be able to access streamed or recorded lessons for each of the classes on their schedule.
- Students will be assigned dedicated academic course and SLA teachers to help support their learning.
- Students will have access to teachers, counselors, learning support teachers, and administrators via email, calendar invites, and Zoom sessions.
- Asynchronous students must attend all classes within the 48 hour buffer zone by logging onto Google Classroom (attendance will be taken).
- Asynchronous students must complete all work within the 48 hour buffer zone.

Block	Monday - Thursday Time	Friday Late Start Time
1	7:30 - 8:45	8:20 - 9:20
2	8:55 - 10:10	9:30 - 10:30
3	10:25 - 11:40	10:50 - 11:50
Lunch	11:40 - 12:20	11:50 - 12:50
4	12:20 - 1:35	12:50 - 1:50
5	1:45 - 3:00	2:00 - 3:00
Virtual After School (Sports, Activities, Clubs, Service)	Varies	Varies

- All classes will use Google Classroom as the primary online learning environment.
- Zoom or Google Meet will be the main video-conferencing platforms.
- Friday late start follows standard Friday late start schedule.

Service Learning, Community Connections and Support

Once per rotation (Day X), students will engage in activities that build student community and spirit, ensure JIS' commitment to service learning, foster student well-being, and provide opportunities for structured additional support necessary for student success.

High School

Learning Scenarios

The three learning models have been designed to ensure students will be presented with similar learning outcomes, experiences, and expectations. The models have been developed to ensure uninterrupted quality learning experiences, flexibility, and seamless integration in the likely event that we need to respond to different circumstances over the course of the school year. The High School will be able to move fluidly between the models at any given time within the school year given the policies and regulations of the Indonesian Ministry of Education. Each of these models allows students to progress seamlessly towards high school graduation.

The following components of learning will remain constant regardless of the learning model:

Teaching & Learning

The academic program will focus on building the foundations of learning: knowledge, skills, and understanding, as well as developing the learning dispositions of resilience, resourcefulness, relating, and reflecting. Learning will continue to be supported through the use of Google Classroom. The High School will use the normal 10-day rotating schedule and students will engage in their timetabled classes.

Social-Emotional Learning (SEL)

The wellbeing of our students is paramount to student success. The High School recognizes that a large focus of learning is about the social and emotional development of adolescents and the relationships that they make in school. This will be done through:

- Daily connection time with their classroom teachers and classmates.
- Connection time with their SLA teachers and classmates at least once a week.
- Connection time with their counselors and administrators by appointment.
- Parent and student sessions on parenting and other social-emotional topics.
- Individual counseling sessions, as needed.

Learning Support (LS) and English as an Additional Language (EAL)

Students who receive specific interventions or support from the Learning Specialist or EAL teachers will receive small group or individual teaching time from their respective specialist teacher.

- Students will receive support that is reflective of their Individual Learning Plan.
- Learning Support teachers will support students through their classes and provide individual help as needed.
- Students who are receiving English as an Additional Language support will receive support through their classes and individual support.

Community Building

The High School will offer opportunities to develop relationships, build community and create connections. Students will engage in activities that:

- Build student community and spirit.
- Ensure JIS' commitment to service learning.
- Ensure student wellbeing and balance.
- Build on the tradition of "Ordinary Magic" through assemblies, grade level time, and other campus wide events.

Assessment & Reporting

High School students will receive regular, timely, and ongoing feedback on their progress of learning. Students will be assessed based on the school's adopted learning outcomes. The quality and quantity of summative and formative assessment practices will continue as normal, and assessment results will be posted to PowerSchool. Students and parents should reach out to teachers if they need further information regarding student learning and progress.

Child Safeguarding

As with all learning both on and off campus at JIS, our Child Safeguarding Policies and procedures continue to guide our practice. Please refer to the [Child Safeguarding Policy page](#).

