



MIDLOTHIAN ISD

Organizational Chart
2020-2021

Lane Ledbetter, Superintendent of Schools

Judy Walling
Deputy Supt. of Learning

- Curriculum / Instruction
- Specialized Learning
- DEIC
- Professional Development
- Instructional Technology
- Advanced Academics
- Accountability /Assessment

Leslie Garakani
Chief Technology Officer

- Network
- Bond – Technology
- M*Powered
- Public Educ. Inform. Systems
- Data Systems Management

Karen Fitzgerald
Asst. Supt. for Engagement and Strategic Initiatives

- Education Foundation
- Public Relations
- Internal Communications
- Marketing
- Community Partnership
- Strategic Plan

KayLynn Day
Assistant Supt. of HR & Student Services

- Human Resources
- Student Services
- Safety and Security
- Payroll
- Benefits

Jim Norris
Assistant Supt. of Finance & Operations

- Finance/Budgeting/Accounting
- Bond Project Oversight
- Construction
- Transportation
- Maintenance
- Food Service

Courtney Carpenter
Chief Administrative Officer

- Leadership Development
- Executive Coaching
- Coordination of District-Wide PD
- Strategic Plan Process/Revision
- District-wide Systems Coordination
- District Goals Process & Metrics

Theda McGrew

Administrative Assistant

Lane Ledbetter, Superintendent of Schools

Gary
Gates

Principal
Midlothian High School

Ryan Timm

Principal
Baxter Elementary School

Stacy
Germany

Principal
Dolores McClatchey
Elementary

Krista
Tipton

Principal
Heritage High School

Josh
Roberts

Principal
Irvin Elementary School

Georgia
Swize

Principal
Mt. Peak Elementary

Carly
Woolery

Principal
Walnut Grove Middle School

Karena
Blackwell

Principal
Longbranch Elementary

Hollye
Walker

Principal
Vitovsky Elementary

Kristopher
Vernon

Principal
Frank Seale Middle School

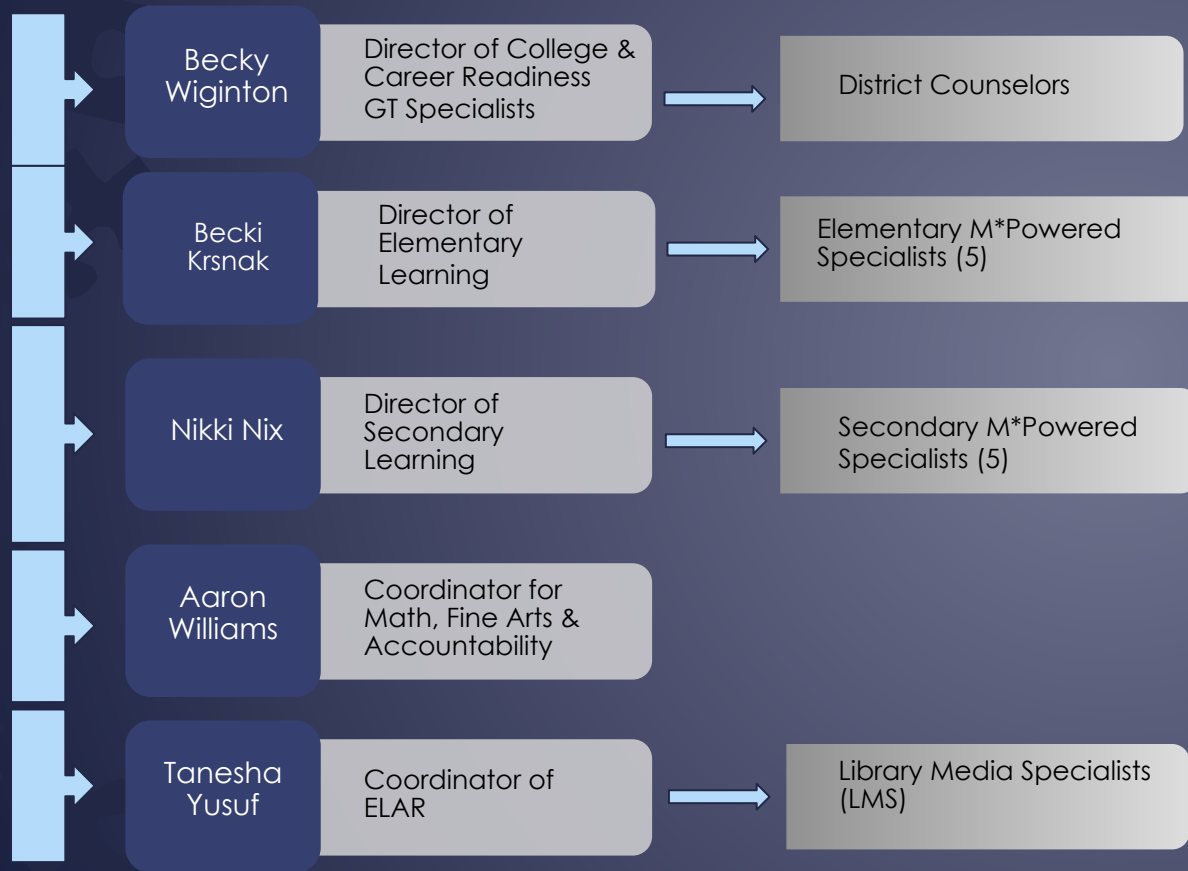
Shannon
West

Principal
LaRue Miller Elementary

Amanda
Rodgers

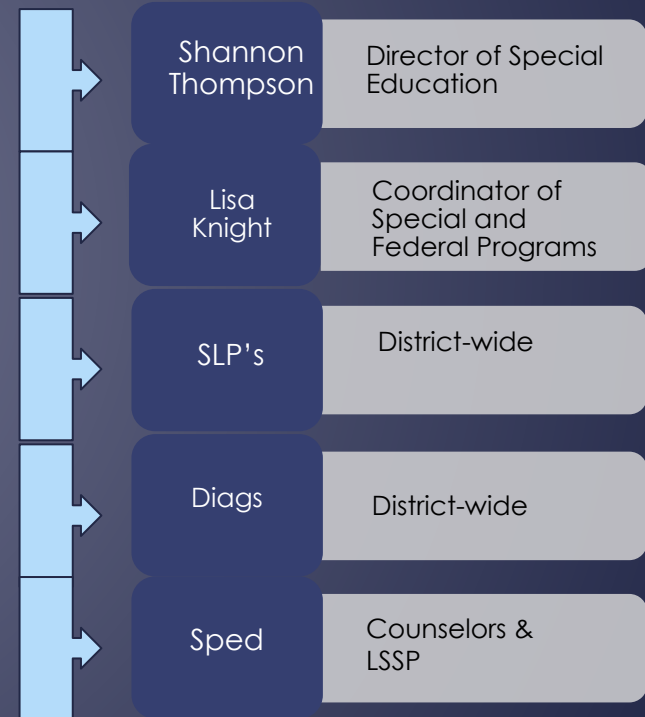
Principal
Dieterich Middle School

Judy Walling, Deputy Supt. for Learning



C & I Administrative Support
 Jamie Greene - Administrative Assistant
 Keni Somerville - Secretary

Melissa Wolfe
 Executive Director of Specialized Learning



Specialized Learning Administrative Support
 Vanessa Hardegee - Secretary
 Terri Driggers - Special Ed PEIMS
 Danielle Schrodtt - Special Ed Records

Leslie Garakani, Chief Technology Officer

Gregg Burcham

Director of Technology Services

Justin Wright

Network Administrator

Brandon Logan

Systems Administrator

Jana Thornton

Mobile Solutions Specialist

Vanya Worley

Acquisitions & Asset Manager

Chris Dotson

Technology Specialist

John Allen

Technology Specialist

Noe Gonzales

Technology Specialist

Brett Matthena

Technology Specialist

Cassandra McDorman

Technology Specialist

Angela Harrell

Technology Specialist

Jessica McWhorter

Director of Information Systems

Sheila Rushing

PEIMS Coordinator

Lydia Smith

SIS Support

Jennifer Wilt

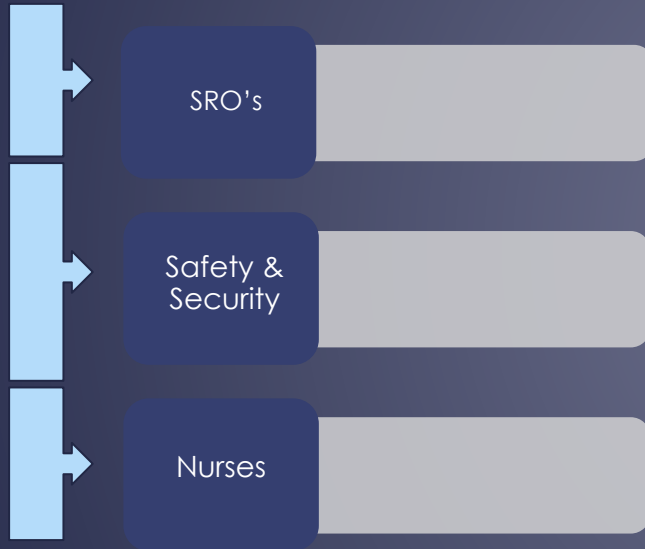
Systems Analyst

Technology Secretary
Pat Daniels

KayLynn Day, Assistant Superintendent for HR and Student Services

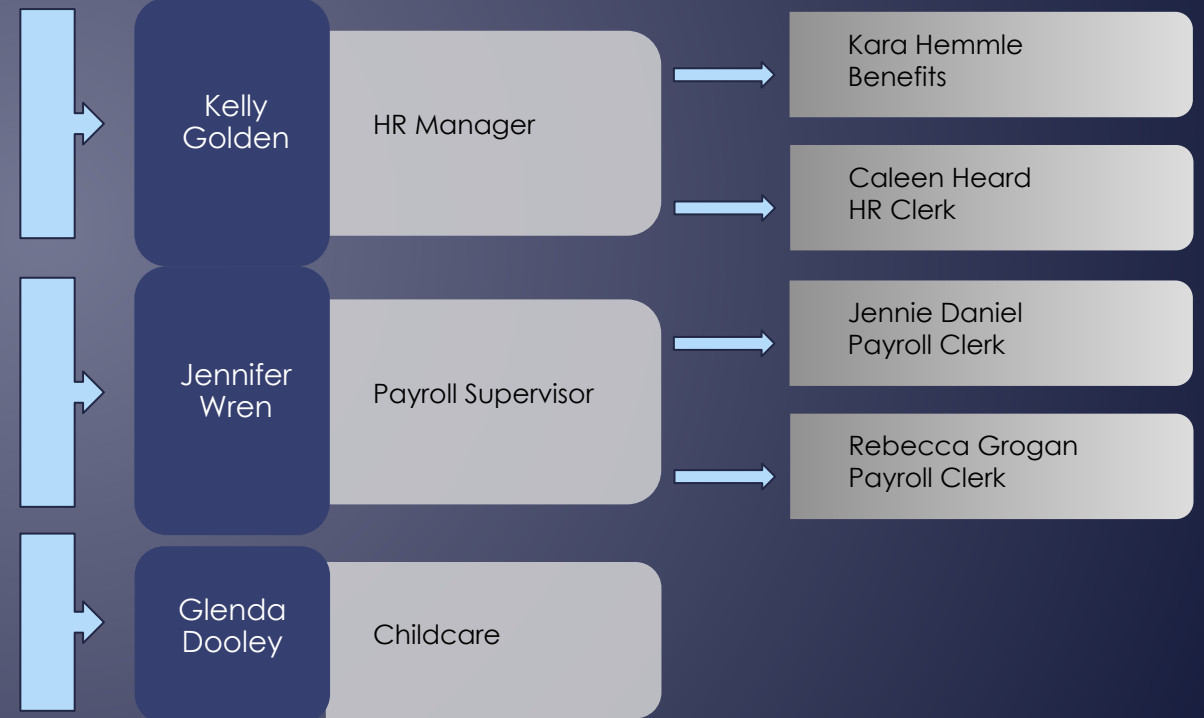
Al Hemmle

Student Services Administrator



Shorr Heathcote

Director of Human Resources



HR Administrative Support

Shannon Wayland - Administrative Assistant
Debbie Fallen - MISD Receptionist
Deborah Essary - AESOP Coordinator

Jim Norris, Asst Supt for Finance & Operations

Sandy Bundrick

Controller

Deanna Cannon

Transportation

Rola Fadel

Director of Architecture Projects

Brian Blackwell

Exec Director of Finance and Operations

Stephanie Moore

Accounts Payable

Tina Oakley

Support Accountant

Shana Volentine

Purchasing Agent

Margo Hughson

Lead Accounts Payable

Marie Anderle

Admin Assistant for Finance

Reed Bass

Director of Construction Projects

Carlos Rivera

Coordinator of Custodial Services

Scott Sparks

Coordinator of Maintenance

Donette Moss

Admin Assistant for Rola Fadel

Aramark Food Service

Karen Fitzgerald, Assistant Superintendent for Engagement & Strategic Innovation

