



ROAD MAP

to High School Graduation & Beyond



Nondiscrimination Notice

The Longview School District is an Equal Opportunity district in education programs, activities, services, and employment. Longview School District does not discriminate on the basis of sex, race, creed, religion, color, national origin, age, veteran, or military status, sexual orientation, gender expression or identity, genetic information, disability, or the use of a trained dog guide or service animal. We provide equal access to the Boy Scouts of America and other designated youth groups. We also comply with Section 504 of the Rehabilitation Act of 1973, Section 402 of the Vietnam Era Veterans Readjustment Act of 1974, the Americans with Disabilities Act of 1990, the Civil Rights Act of 1964, the Age Discrimination in Employment Act, Older Worker Protection Act, and all other state, federal, and local equal opportunity laws. If you have a physical or mental disability that causes you to need assistance to access school facilities, programs, or services, please notify the school principal. This district endeavors to maintain an atmosphere free from discrimination and harassment. Any person who believes he or she has been discriminated against should contact the following district employees, located at 2715 Lilac Street, Longview, 98632, who have been designated to handle questions and complaints of alleged discrimination:

Section 504, Student ADA Coordinator, Title IX Coordinator

Tony VanderMaas, Assistant Superintendent

(360) 575-7200

tvandermaas@longview.k12.wa.us

Civil Rights Compliance Coordinator

Penny Andrews, Director of Human Resources

(360) 575-7991

pandrews@longview.k12.wa.us

Notificación de No Discriminación

El distrito escolar de Longview es un distrito que ofrece igualdad de oportunidades en programas educativos, actividades, servicios y empleo. El Distrito Escolar de Longview no discrimina por motivos de sexo, raza, credo, religión, color, origen nacional, edad, condición de veterano o militar, orientación sexual, expresión o identidad de género, información genética, discapacidad o el uso de un perro guía o animal de servicio. Brindamos igualdad de acceso a los Boy Scouts of America y otros grupos juveniles designados. También cumplimos con la Sección 504 de la Ley de Rehabilitación de 1973, la Sección 402 de la Ley de Reajuste de Veteranos de la Era de Vietnam de 1974, la Ley de Estadounidenses con Discapacidades de 1990, la Ley de Derechos Civiles de 1964, la Ley de Discriminación por Edad en el Empleo, Protección de Trabajadores Mayores y todas las demás leyes estatales, federales y locales de igualdad de oportunidades. Si tiene una discapacidad física o mental que hace que necesite ayuda para acceder a las instalaciones, programas o servicios escolares, notifique al director de la escuela. Este distrito se esfuerza por mantener una atmósfera libre de discriminación y acoso. Cualquier persona que crea que ha sido discriminada debe comunicarse con los siguientes empleados del distrito, ubicados en 2715 Lilac Street, Longview, 98632, quienes han sido designados para manejar preguntas y quejas de supuesta discriminación:

Sección 504, Coordinador estudiantil de ADA, Coordinador del Título IX

Tony VanderMaas, Assistant Superintendent

(360) 575-7200

tvandermaas@longview.k12.wa.us

Coordinador de Cumplimiento de Derechos Civiles

Penny Andrews, Director de Recursos Humanos

(360) 575-7991

pandrews@longview.k12.wa.us

INTRODUCTION

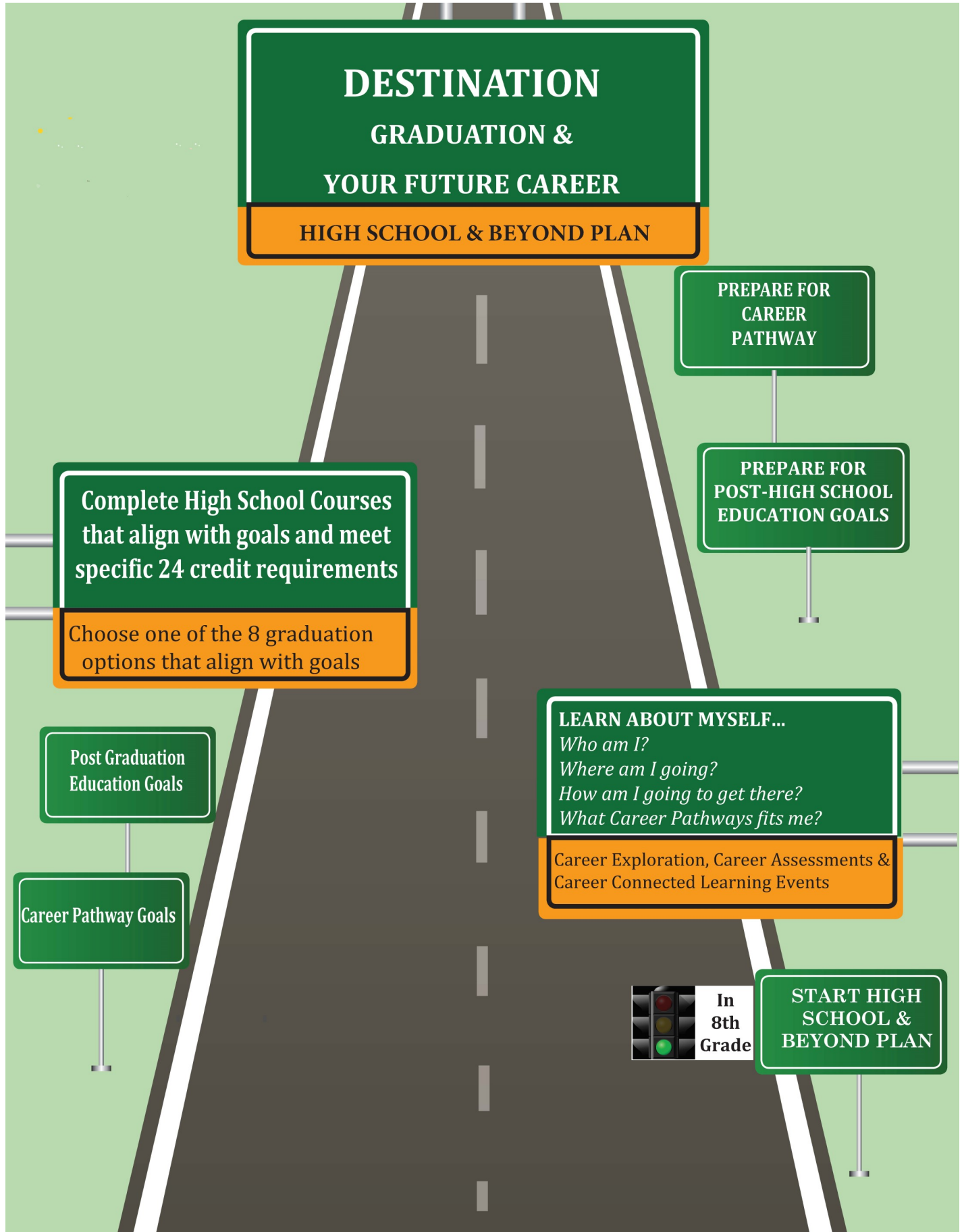
The purpose of this guide is to provide Longview School District students and their families with a resource for planning high school courses that meet graduation requirements and prepare students for their future career goals after high school. This guide will provide information on career pathways, graduation requirements, and course sequences called Programs of Study that lead students toward their future career and educational plans.

This guide will allow our students and their families to:

- Learn about the High School and Beyond Plan graduation requirement.
- Learn about career pathways offered in our district.
- Identify CTE courses sequences and Programs of Study that meet specific career pathways.
- Learn about the new options for meeting graduation requirements that align to specific career goals.
- Identify credit and exit requirements for graduation.

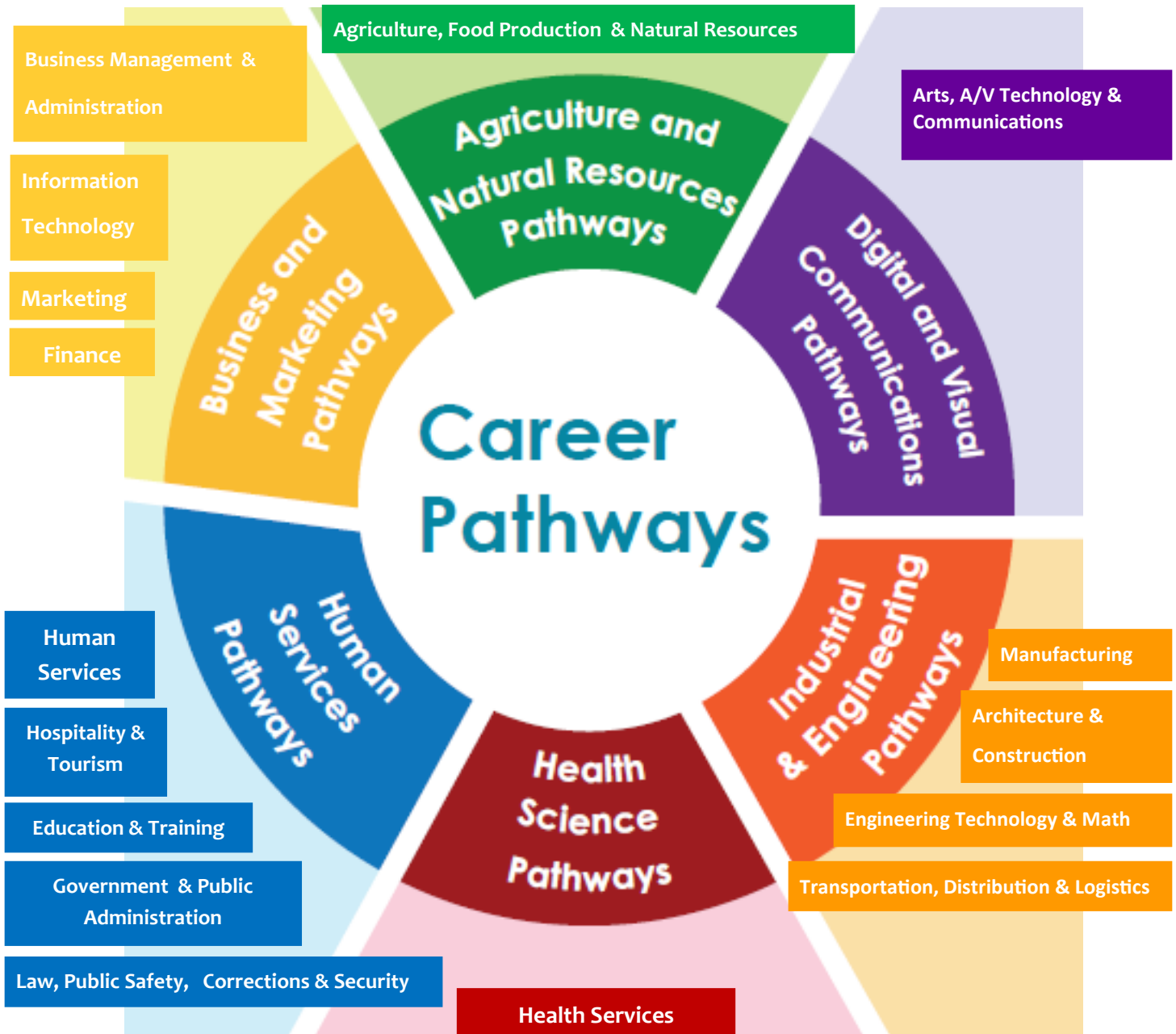
This guide is designed as resource to provide information for high school course planning and graduation requirements. Students and their families are encouraged to work closely with high school counselors to make sure all graduation requirements are met.

WHAT DESTINATION IS IN YOUR FUTURE?



CAREER PATHWAYS AND CAREER CLUSTERS

Longview School District has six different Career Pathways: Agriculture & Natural Resources, Digital and Visual Communications, Industrial & Engineering, Health Science, Human Services, and Business and Marketing. Each of the six Career Pathways have numerous career options and are aligned to 16 nationally identified Career Clusters that group occupations by related skills. All Career Pathways are supported by course offerings. Courses need to fit with the 24 credit requirements for graduation.



THE SIX CAREER PATHWAYS AND THE CAREER CLUSTERS THAT ALIGN TO THEM.

GRADUATION REQUIREMENTS FOR THE CLASS OF 2021 & BEYOND

All students in the State of Washington must earn a minimum of 24 credits to graduate from high school. In addition to the total number of credits, students must earn those credits within specific content areas

24 TOTAL CREDITS = 20 CORE CREDITS (3 CAN BE PERSONAL PATHWAY, PPR) + 4 ELECTIVES

20 CORE CREDITS

+

4 ELECTIVE CREDITS

ENGLISH - 4 CREDITS

MATH - 3 CREDITS

Algebra I or Equivalent 1.0

Geometry or Equivalent 1.0

Algebra II or Equivalent 1.0

LAB SCIENCE - 3 CREDITS

Physical Science or Equivalent 1.0

Biology or Equivalent 1.0

Lab Science Elective or Equivalent 1.0

SOCIAL STUDIES - 3 CREDITS*

U.S. History 1.5

Civics .5

Current World Problems (CWP) or Equivalent 1.0

Physical Education - 1.5 Credits *

Health - .5 Credits

Career & Technical (CTE) - 1.0 Credits

Arts - 2.0 Credits or Art 1.0 + 1.0 Credits PPR

World Language - 2.0 Credits or 2.0 Credits PPR

4 elective credits that meet each student's interests and goals after graduation from high school (per each student's High School & Beyond Plan)

Additional Graduation Requirements

- Complete Aspire to Achieve Culminating Project/Presentation Requirements (varies by high school)
- Completion of High School & Beyond Plan (updated annually 7th—12th grade).
- Meet one of the 8 graduation pathway exit requirements based on the individualized goals in each student's High School & Beyond Plan

*Washington State History is a required course; if it was not completed in middle school, it must be taken in high school.

**1.0 PE requirement can be met by successful completion of two WIAA sport seasons.

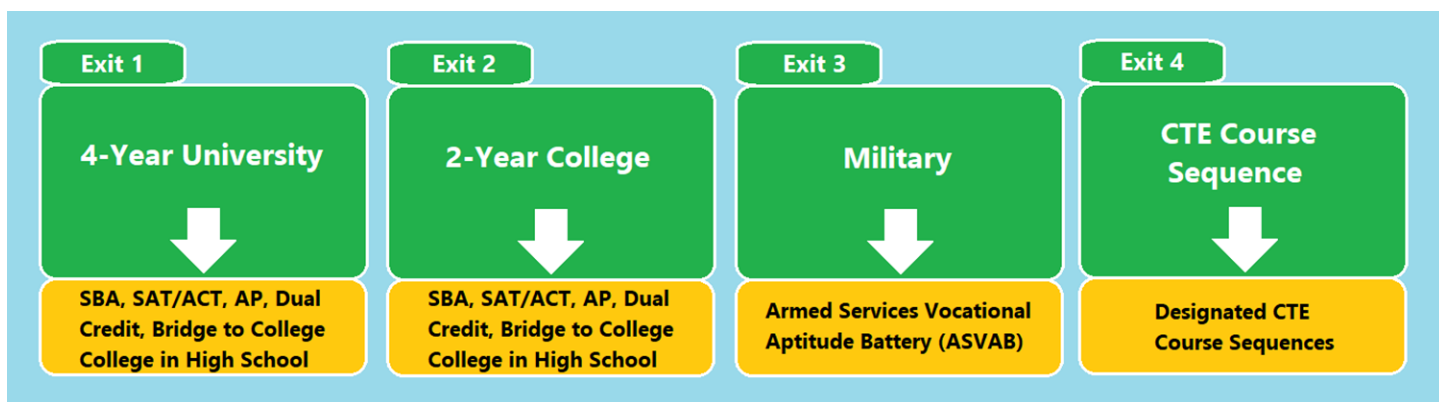
GRADUATION EXIT REQUIREMENTS

To exit high school and earn a high school diploma, students must select an exit requirement for English language arts (ELA) and for math. The exit criteria are much like a highway exit lane; once selected you stay in that lane but lane changes are allowed if you do so early enough in your high school career.

The exit requirements you choose will depend upon the Career Pathway you choose . . .



What Exit Will You Take?



All students are required to take the Smarter Balanced Assessment (SBA) in English language arts (ELA) and math during their sophomore (10th grade) year. Passing the SBA is no longer required to earn a diploma but is highly recommended if you plan to attend a four-year university. There are additional assessments and course taking opportunities to earn a high school diploma. All 4 exit opportunities are available within each of the six career pathways

Personal Pathway Requirements (PPR)

Personal Pathway Requirements are a selection of courses that can help prepare you to meet your graduation and career pathway goals. The courses in your PPR will align with your career pathway choice and may include

- Additional, more challenging, or equivalent, core classes
- Arts or elective courses
- Career and Technical Education courses or course sequences

GRADUATION PLAN

Four-Year College/University

Grade 9	First Semester	Second Semester
	English 9	English 9
	Math (Algebra or Geometry)	Math (Algebra or Geometry)
	Physical Science or Equivalent	Physical Science or Equivalent
	PE	Health
	Arts or Elective	Arts or Elective
	World Language*	World Language*
Grade 10	English 10	English 10
	Math (Geometry or Algebra II)	Math (Geometry or Algebra II)
	Biology or Equivalent	Biology or Equivalent
	Social Studies	Social Studies
	World Language*	World Language*
	Arts or Elective	Arts or Elective
Grade 11	English	English
	Math (Algebra II or Equivalent)	Math (Algebra II or Equivalent)
	Laboratory Science	Laboratory Science
	Social Studies	Social Studies
	PE	PE
	Arts or Elective	Arts or Elective
Grade 12	English	English
	Math or Science	Math or Science
	Current World Problems	Current World Problems
	CTE Elective	CTE Elective
	Elective	Elective
	Elective	Elective

* World Language is highly recommended if you are planning on attending a 4-year university and will likely improve your chances of being accepted. Taking these classes in high school will likely avoid having to take a foreign language in college.

Subject	GRADUATION PATHWAY EXIT CRITERIA
ELA	Any one of: SBA, SAT, ACT, AP, CTE, Transition Course or Dual Credit
Math	Any one of: SBA, SAT, ACT, AP, CTE, Transition Course or Dual Credit

GRADUATION PLAN

Two-Year College, Technical College, or Vocational Program*

Grade 9	First Semester	Second Semester
	English 9	English 9
	Math (Algebra or Geometry)	Math (Algebra or Geometry)
	Physical Science or Equivalent	Physical Science or Equivalent
	Social Studies	Social Studies
	PE	Health
	Arts or Elective	Arts or Elective
Grade 10	English 10	English 10
	Math (Geometry, Algebra II, or Equivalent)	Math (Geometry, Algebra II, or Equivalent)
	Biology or Equivalent	Biology or Equivalent
	Social Studies	Social Studies
	Arts or Elective	Arts or Elective
	CTE Elective	CTE Elective
Grade 11	English	English
	Math (Algebra II or Equivalent)	Math (Algebra II or Equivalent)
	Laboratory Science	Laboratory Science
	Social Studies	Social Studies
	PE	PE
	Elective	Elective
Grade 12	English	English
	Math or Science	Math or Science
	Current World Problems	Current World Problems
	Elective	Elective
	Elective	Elective
	Elective	Elective

* Students choosing the 2-year college, technical school, or vocational program pathway will still need to meet standard on the SBA, pass one of the other assessments, or meet standard with a dual credit course option for both ELA and math.

Subject	GRADUATION PATHWAY EXIT CRITERIA
ELA	Any one of: SBA, SAT, ACT, AP, CTE, Transition Course or Dual Credit
Math	Any one of: SBA, SAT, ACT, AP, CTE, Transition Course or Dual Credit

GRADUATION PLAN

MILITARY*

Grade 9	First Semester	Second Semester
	English 9	English 9
	Math (Algebra or Geometry)	Math (Algebra or Geometry)
	Physical Science or Equivalent	Physical Science or Equivalent
	Social Studies	Social Studies
	PE	Health
	Arts or Elective	Arts or Elective
Grade 10	English 10	English 10
	Math (Geometry , Algebra II, or Equivalent)	Math (Geometry , Algebra II, or Equivalent)
	Biology or Equivalent	Biology or Equivalent
	Social Studies	Social Studies
	Arts or Elective	Arts or Elective
	CTE Elective	CTE Elective
Grade 11	English	English
	Math (Algebra II or Equivalent)	Math (Algebra II or Equivalent)
	Laboratory Science	Laboratory Science
	Social Studies	Social Studies
	PE	PE
	Elective	Elective
Grade 12	English	English
	Math or Science	Math or Science
	Current World Problems	Current World Problems
	Elective	Elective
	Elective	Elective
	Elective	Elective

*Students participating in the Military Graduation Plan may use the ASVAB as their exit requirement for both ELA and Math. If you are not choosing the military pathway, you cannot use the ASVAB as an exit requirement. Following the Military pathway does not require you to enroll in the military, but you will need to include Military in your High School & Beyond Plan.

Subject	EXIT CRITERIA
ELA	ASVAB or Any one of: SBA, SAT, ACT, AP, CTE, Transition Course or Dual Credit
Math	ASVAB or Any one of: SBA, SAT, ACT, AP, CTE, Transition Course or Dual Credit

GRADUATION PLAN

Career and Technical Education Course Sequence*

Grade 9	First Semester	Second Semester
	English 9	English 9
	Math (Algebra or Geometry)	Math (Algebra or Geometry)
	Physical Science or Equivalent	Physical Science or Equivalent
	PE	Health
	Social Studies	Social Studies
	CTE Elective	CTE Elective
Grade 10	English 10	English 10
	Math (Geometry or Algebra II)	Math (Geometry or Algebra II)
	Biology or Equivalent	Biology or Equivalent
	Social Studies	Social Studies
	CTE Elective	CTE Elective
	Arts Equivalent	Arts Equivalent
Grade 11	English	English
	Math (Algebra II or Equivalent)	Math (Algebra II or Equivalent)
	Laboratory Science	Laboratory Science
	Social Studies	Social Studies
	CTE Course Sequence Requirement	CTE Course Sequence Requirement
	CTE Course Sequence Requirement	CTE Course Sequence Requirement
Grade 12	English	English
	Math or Science	Math or Science
	Current World Problems	Current World Problems
	PE	PE
	CTE Course Sequence Requirement	CTE Course Sequence Requirement
	Elective	Elective

* Students choosing the Career and Technical (CTE) course sequence graduation plan will need to take a specified sequence of CTE courses . Moving between CTE course sequences is not recommended. Some CTE courses can replace core ELA, math or science courses. Students choosing this plan will need to work closely with their counselor to ensure they are meeting specific requirements.

Subject	EXIT CRITERIA
ELA	Any one of: SBA, SAT, ACT, AP, CTE, Transition Course or Dual Credit
Math	Any one of: SBA, SAT, ACT, AP, CTE, Transition Course or Dual Credit



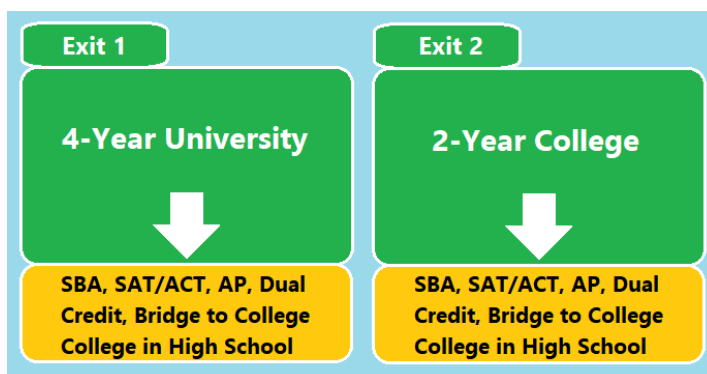
Pathways to Graduation

OPTION 1

4-Year University
2 Year College, Trade/Technical School, or Vocational Program

Who Can Graduate Using This Graduation Option?

- All students can meet graduation requirements with this option. This was the only option to meet graduation requirements prior to the class of 2020 and is the number one way most students will continue to meet graduation requirements.



What Post-High School Plans Does This Graduation Pathway Prepare Me For?

- This pathway prepares students for entrance into **any** educational pathway: direct entry into a four-year university or two year community or technical college, or military program. Entry into apprenticeship, industry standard certificate programs, or on-the-job training may require taking electives in specific course sequences to be better prepared for those options.

What if I do not pass the SBA in ELA or Math?

OPTION 2: Score a 3 or higher on specific AP Exams.

OPTION 3: Exam scores from the SAT, SAT with Essay, ACT, or ACT with Writing.

OPTION 4: Pass a Bridge-to-College course in ELA and/or Math, earning at least 1.0 credits per subject throughout the duration of an entire school year.

OPTION 5: Complete and qualify for college credit in dual-credit courses in ELA or Math.

OPTION 6: Meet at least one ELA and at least one math pathway from options 1-5.

OPTION 7: ARMED SERVICES VOCATIONAL APTITUDE BATTERY (ASVAB)

- Meeting the minimum score the Armed Forces Qualification Test (AFQT) portion of the ASVAB is only for students who have a Career Pathway and Educational Pathway that includes enlisting in the military outlined in their High School & Beyond Plan.
- This pathway does not require any communication with a military recruiter. Only students choosing this exit requirement pathway can use the ASVAB to meet their exit requirements for ELA and Math

Exit 3

Military



Armed Services Vocational Aptitude Battery (ASVAB)

OPTION 8: CAREER & TECHNICAL EDUCATION (CTE) COURSE SEQUENCE

- Students must complete a designated CTE course sequence connected to their High School and Beyond Plan. In the Longview School District, these are called CTE Programs of Study.
- Students with this pathway will be prepared for the following educational pathways after high school: community/technical college* apprenticeship, military programs, industry standard certificate programs, and on-the-job training.

Exit 4

CTE Course Sequence



Designated CTE Course Sequences

**Community/Technical Colleges in Washington have transfer options to attend universities and many of them (Including LCC) offer Bachelors of Applied Science degrees.*



COLLEGE IN HIGH SCHOOL OPTIONS

Did you know you can earn college credit while in high school?

There are a variety of ways to earn college credit while in high school in the Longview School District. Passing these classes also allow students to meet graduation Exit Criteria requirements. Review the options for college credit listed below and see your high school counselor for more information or if you have additional questions.

Advanced Placement Courses (AP)

Courses with college-level curriculum and examinations for high school students. Colleges often grant placement to students who obtain high scores above a certain number on the examinations.



Advanced Placement Courses in Longview include:

Advanced Placement (AP) classes are courses that are taught at a college level. College credit may be earned by passing the end of year AP test for each class. Passing with a C+ or better also counts as graduation exit criteria.

AP Biology,
AP Chemistry
AP Government
AP Psychology
AP US History
AP Statistics

AP Literature and Composition
AP Language and Composition,
AP Calculus
AP Spanish
AP Computer Science Principles.

Dual Credit

CTE Dual Credit Courses are high school classes that earn both high school and college credit when students earn a final grade of a B or better. Students will earn 5 college credits for each semester of a CTE Dual Credit class where they earn a B or better.



College in the High School courses (CWU or UW)

Courses with college-level curriculum and assessments for high school students. With successful completion of courses, students will earn college credit in addition to their high school credits. These courses also count towards exit criteria. College credit courses include: Pre-Calculus 153/154, Calculus 172/173, French 103

Running Start

Running Start: Students may be eligible for participation in Running Start classes at LCC. Please see your counselor if interested. To be eligible, students must:

1. Have earned a minimum of 10 high school credits,
2. Have Junior standing,
3. Have a minimum 2.5 grade point average and
4. Pass the college entrance exam requirements and/or the SBA English-Language Arts Exam.

CTE COURSE SEQUENCES BY CAREER PATHWAY

Students choosing the CTE Course Sequence must complete a total of 2 credits of courses selected from the list within the same Career Pathway. Some CTE course sequences require a specific sequence of courses which are outlined as Programs of Study under the pathway. Programs of Study must include all of the specific courses listed at each grade level.

AGRICULTURE & NATURAL RESOURCES PATHWAY

- Horticulture
- Environmental Science (*this course is not offered every year*)

ARTS, A/V TECHNOLOGY & COMMUNICATIONS PATHWAY

- Audio Productions
- Technical Theater
- Advanced Technical Theater
- Film Making & Design
- Digital Photography I
- Digital Photography II
- Digital Design
- Dream, Design, Build

HEALTH SCIENCE PATHWAY

- Biomedical Science
- Human Body Systems
- Medical Science I
- Medical Science II
- Health Science (*offered in Kelso School District*)

HUMAN SERVICES PATHWAY

Culinary Arts Pathway

- Culinary Arts I
- Culinary Arts II
- Baking & Pastry

Fire Science Pathway*

- Fire Science I
- Fire Science II

** Only offered in Kelso School District*

Police Science Pathway*

- Police Science

BUSINESS & MARKETING PATHWAYS

Marketing Pathway

- Marketing I
- Marketing II
- Sports & Entertainment Marketing

Accounting Pathway

- Accounting I
- Accounting II

Office Administration Pathway

- Microsoft Academy I/II
- Microsoft Academy III/IV

Business Administration Pathway

- Intro to Business
- Microsoft Academy I/II
- Personal Finance

Computer Science Pathway

- AP Computer Science
- Accounting II

Information Technology Pathway

- AP Computer Science
- Microsoft Academy I/II
- Microsoft Academy III/IV

INDUSTRIAL & ENGINEERING PATHWAYS

Manufacturing Pathway

- Manufacturing Foundations*
- Computer Assisted Drafting & Design
- Advanced CADD
- Computer Integrated Manufacturing
- Dream, Design, Build

Engineering Pathway

- Engineering Essentials*
- STEM Engineering Capstone
- Robotics Technology & Drones
- Computer Assisted Drafting & Design
- Advanced CADD

APPRENTICESHIP & TRADES PREPARATION (INDUSTRIAL & ENGINEERING PATHWAY) PROGRAM OF STUDY

This pathway requires students to take the specific classes listed for each grade level as indicated below:

GRADE 9	FIRST SEMSTER		SECOND SEMSTER	
	English 9		English 9	
	Algebra		Algebra	
	Physical Science or Equivalent		Physical Science or Equivalent	
	Family Health or PE Elective		Family Health or PE Elective	
	Dream, Design, Build*		Dream, Design, Build*	
	Manufacturing Foundations*		Manufacturing Foundations*	

GRADE 10	FIRST SEMSTER		SECOND SEMSTER	
	English 10		English 10	
	Applied Industrial Algebra		Applied Industrial Algebra	
	Biology or Equivalent		Biology or Equivalent	
	Social Studies		Social Studies	
	PE Elective		PE Elective	
	Computer Aided Drafting & Design*		Computer Aided Drafting & Design*	

GRADE 11	FIRST SEMSTER		SECOND SEMSTER	
	English		English	
	Social Studies		Social Studies	
	Geometry in Construction*		Geometry in Construction*	
	Science elective or CTE Equivalent		Science elective or CTE Equivalent	
	Apprenticeship Preparation I		Apprenticeship Preparation II	
	Advanced CADD*		Advanced CADD*	

GRADE 12	FIRST SEMSTER		SECOND SEMSTER	
	Technical Writing*		Technical Writing*	
	Social Studies		Social Studies	
	Computer Integrated Manufacturing*		Computer Integrated Manufacturing*	
	Apprenticeship Preparation Block II*		Apprenticeship Preparation Block II*	
	Apprenticeship Preparation Block II*		Apprenticeship Preparation Block II*	
	Pre-Apprenticeship Internship or Work Exp		Pre-Apprenticeship Internship or Work Exp	

* indicates CTE Dual Credit, courses earn high school and college credit with a grade of B or better.

GRADUATION REQUIREMENTS FAQ

Do all students have to take 24 credits to graduate?

All students in the class of 2021 and beyond have to pass 24 credits to graduate.



How do I earn credits?

Students earn .5 credit for each semester class successfully complete with a passing grade at the end of each semester.

How many classes do I need to pass each year to graduate from high school?

Our high schools are currently on a 6-period day which means students must pass every class, every semester in 9th—12th grade to graduate from high school in their senior year.

What are the Core Credits?

Core credits are the classes everyone must take to graduate, but students have opportunities to choose some unique course options to meet the Core Credits for graduation.

What are Elective Credits?

Elective credits are courses that meet each students interests and career goals for their future. Students plan these courses as part of their Career Pathway and identify them in their High School & Beyond Plan (explained later in this guide).

What is a Personal Pathway Requirements (PPR) ?

A PPR allows students who are not planning to go directly into a four-year university after graduation to take additional elective courses for 1 credit of art and for 2 credits of World Language to meet graduation requirements. Students planning to enter a four-year university after high school should take 2 credits of World Language within their Core Credits.

What is the High School & Beyond Plan?

- The High School & Beyond Plan is a graduation requirement that helps students get the most out of high school by taking classes that prepare them for their future goals.
- The High School & Beyond Plan revolves around three questions: Who am I? Where am I going (*my future career goal*)? and How am I going to get there/How do I or become that (*what education path will prepare me for that*)?
- Students work with school counselors/advisors to create an individual plan for high school that will lead them toward their future career and education goals after high school.

What is the purpose of a High School & Beyond Plan?

- This plan provides a “road map” to make sure students access all classes and opportunities available in high school to be prepared for their individual career and education goals after high school.

GRADUATION REQUIREMENTS FAQ

When do I start and work on my High School and Beyond Plan?

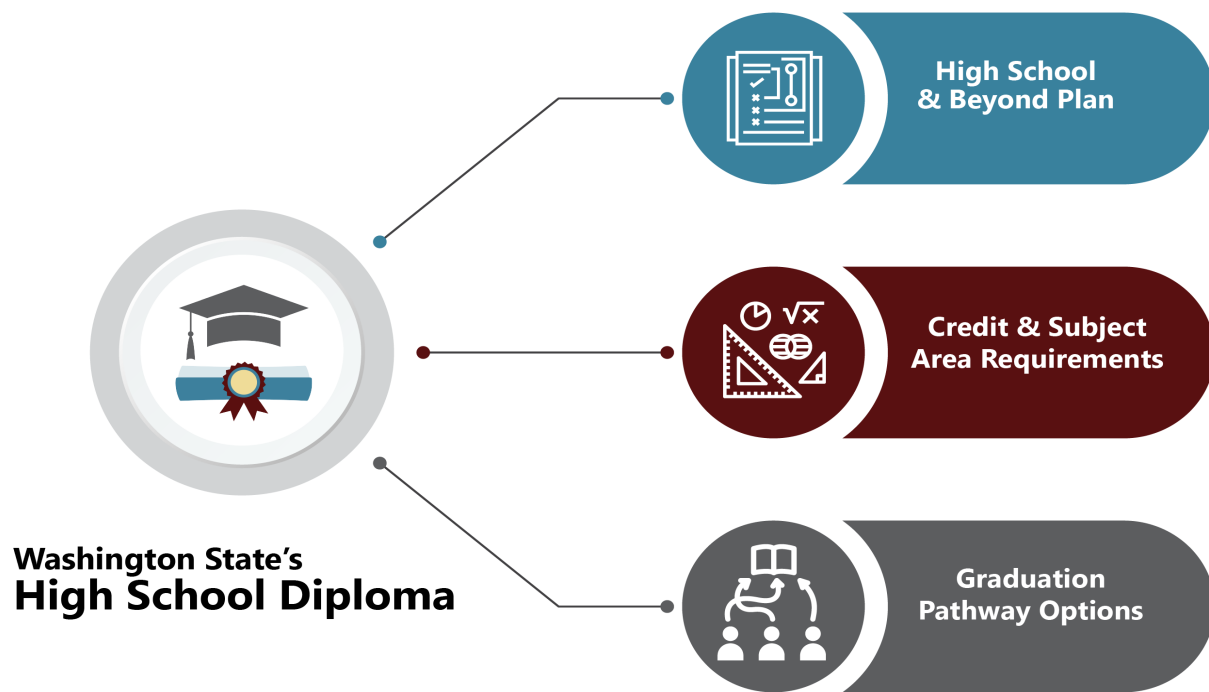
- The High School and Beyond Plan begins in 7th grade with career exploration activities and in 8th grade students will take career assessments to learn more about their interests and identify a possible future career pathway.
- 8th grade students will learn about Longview School District Career Pathways and elective classes that are open to them when choosing classes for their first year of high school (9th grade).
- Students will create a plan for high school and their future goals after high school each school year during 8th –12th grade. In 12th grade students will prepare an oral presentation on their high school experience and the career and education goals they have established in their High School and Beyond Plan.

What happens if I change my mind after I've started high

- Students will revise their plan annually to accommodate changing interests or goals after graduating from high school.
- Students should work closely with their school counselor/advisor to make sure courses taken meet graduation requirements and their after high school goals, as changes are made.



High School & Beyond Plan		
College/Technical Training	Career	Life
<ul style="list-style-type: none">• Identify educational goal(s)• Research requirements to reach educational goals<ul style="list-style-type: none">• Identify required entrance tests• Research entrance requirements• Show a four-year high school plan fulfilling admission requirements• Investigate financial aid options	<ul style="list-style-type: none">• Identify career goal(s)• Take interest & skills assessments• Research requirements to achieve goals• Job shadow/internship if appropriate• Create a resumé	<ul style="list-style-type: none">• Identify personal goals• Keep a log of volunteer experiences• Show development of practical life skills• Create a budget for life after high school



HIGH SCHOOL INFORMATION

R.A. Long High School



Administration

Rich Reeves, Principal
Lacey Griffiths, Assistant Principal
Trevor Person, Assistant Principal/Athletic Director

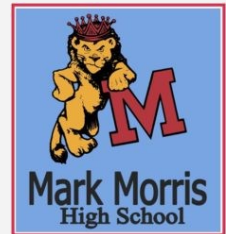
Guidance Office

Lindsey Earl, Guidance Counselor
Lisa Maxey, Guidance Counselor
Katrina Miniutti, Guidance Counselor
Dianne Morrow, Guidance Secretary
360-575-7226
Tami Retterath, Registrar
360-575-7222

Career Center

Jodi Fowler, Career Specialist
360-575-7990

Mark Morris High School



Administration

Brooks Cooper, Principal
Brian Mitchell, Assistant Principal
Robert Blackman, Assistant Principal/Athletic Director

Guidance Office

Darren Joy, Guidance Counselor
Anna Langenbach, Guidance Counselor
Tom Johnson, Guidance Counselor
Kelly Benson, Guidance Secretary
360-575-7670
Renee Messinger, Registrar
360-575-7672

Career Center

Elaine Peters, Career Specialist
360-575-7679

Administration

Mike Kleiner, Principal
Jeanne Kerns, Building Secretary
360-414-2926

Guidance Office

Gina Wreath, Guidance Counselor
360-575-7986

Career Center

Billie Rease, Career Specialist

