



# Staff Report: Safety Planning for 2020-2021



June 29, 2020

Next year, we will be in-person as much as is possible. We will accomplish this by being flexible while staying safe.



Preparing **every student** for the **greatest success** in college, careers, and life.



Teaching, learning, and working together **in-person as much as possible.**



Planning and preparing for **flexibility** and the possibility of **periodic shifts to distance learning.**



Implementing **safety measures** aligned with current guidance from health experts.

# Guidance from local health professionals

“It’s **not going to be your traditional school year**. It’s my hope that it will be more traditional after the first semester...We are hoping to have a vaccine in early 2021.

“...The virus is here, it’s going to be here, and it’s probably going to come back a little stronger this fall... That first semester, **you need to be prepared for in-class and out-of-class instruction**. I hope that we’ll be in class that second semester.”

*-Dr. Bruce Dart, Executive Director, Tulsa Health Department*

- Continue to follow evolving guidance from the Centers for Disease Control and Prevention
- Planning for response grounded in the level of viral activity in the community
- Tulsa Health Department will help us to make decisions about in-person and distance learning in August



# Keeping our students, team, and families safe

- We will layer safety practices as much as possible.
- We will prioritize the needs of our most vulnerable team members and student populations.

Safety will continue to be central to our decision-making for the coming year and will drive our fiscal investments. We will adhere to the most current COVID-19-related guidance and best practices from the Tulsa Health Department.

Assessing and preparing our facilities for social distancing

Planning for personal protective equipment for students and staff

Establishing cleaning and disinfecting protocols that meet CDC guidelines

Preparing for the safe operation of transportation and meal service

Training and signage to support hygiene practices and social distancing



**Health and safety are central to our planning for the 2020-21 school year.**

*Here's what we heard from our team members:*

**"All decisions should be based on health and safety.**

**If kids, staff and families are sick, they won't be at school anyway."**

**"Prioritize safety of entire community. All age groups will be affected by what happens with children."**

**"The safety of teachers and staff along with [that of] their families needs to be kept in mind while planning."**



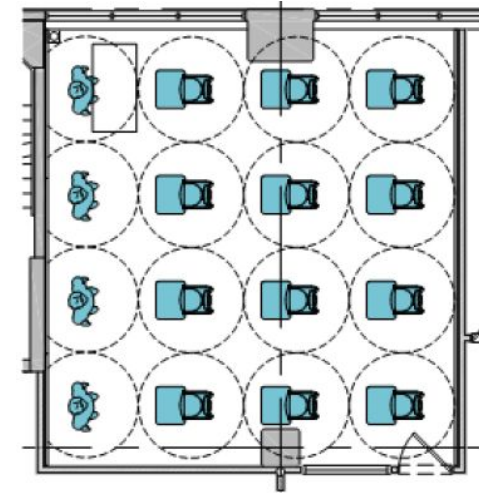
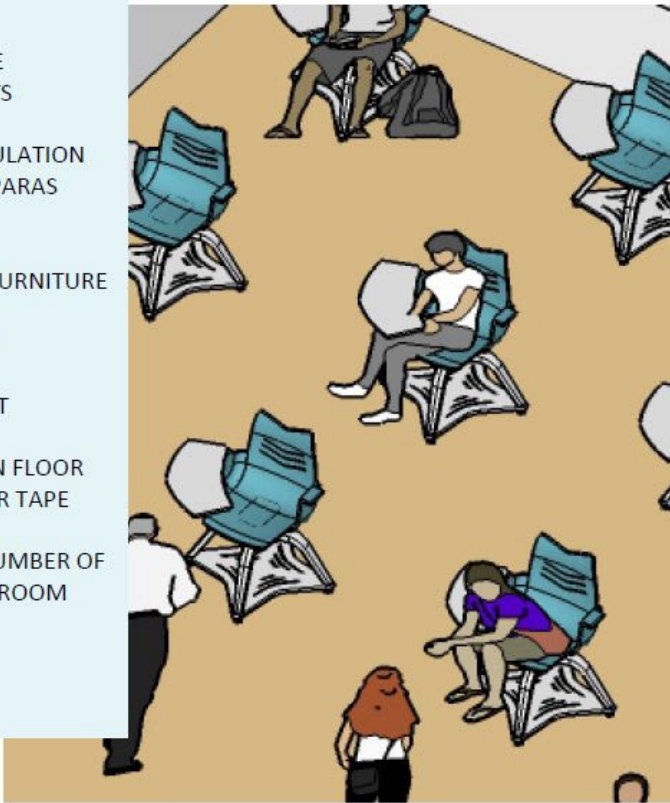
Assessing and preparing our facilities for social distancing



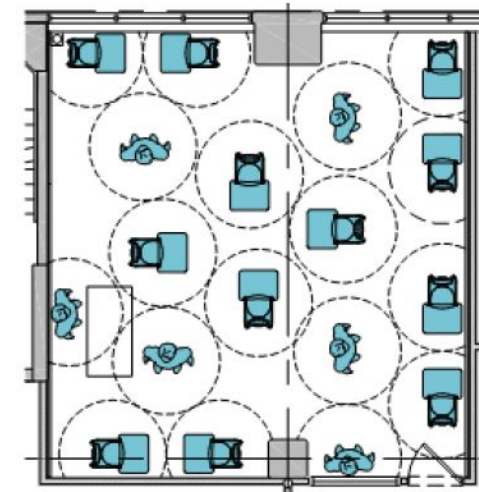
# Reconfiguring space in classrooms to create social distance among students is the recommended safe approach.

## SOCIALLY DISTANCED

- MAXIMIZES DISTANCE BETWEEN OCCUPANTS
- CLEAR PATH OF CIRCULATION FOR TEACHERS AND PARAS
- LIMITED PHYSICAL MODIFICATIONS TO FURNITURE
- EASY TO IMPLEMENT
- LIMITED COST IMPACT
- LAYOUTS MARKED ON FLOOR WITH VARIOUS COLOR TAPE
- MOST LIMITING IN NUMBER OF STUDENTS PER CLASSROOM



Facing same direction



Small groups

# Classroom strategies for social distancing - in practice



DENMARK

*Jens Kristian Vang/EPA-EFE/Shutterstock*



SOUTH KOREA

*Yonhap/EPA-EFE/Shutterstock*



HONG KONG

*Jerome Favre/EPA/Bloomberg News*



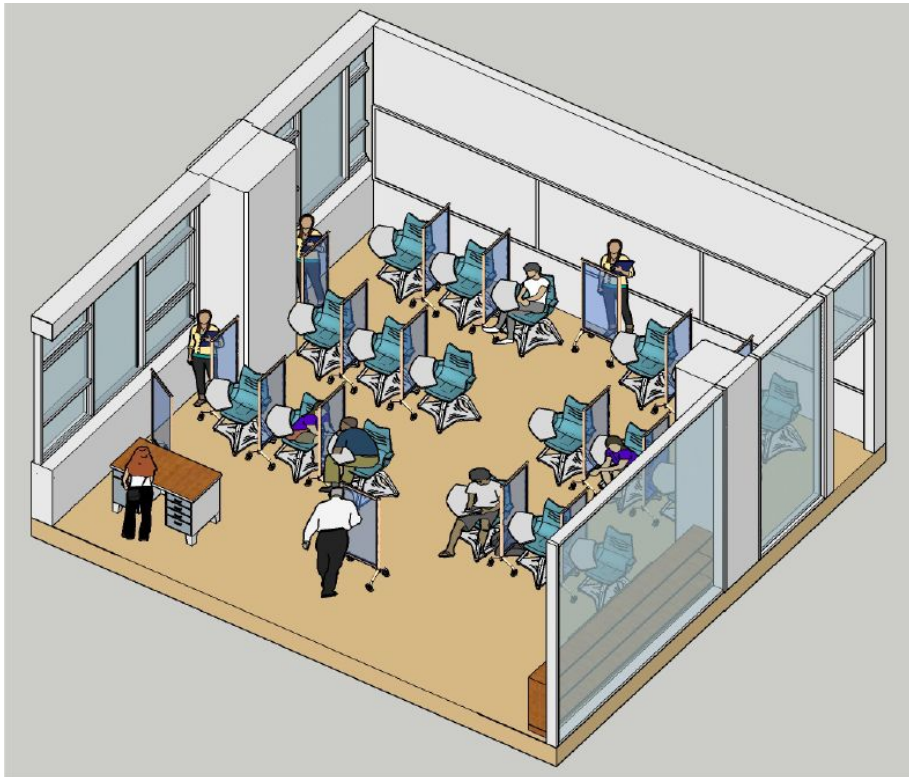
DENMARK

*Thibault Savary/AFP/Getty Images*



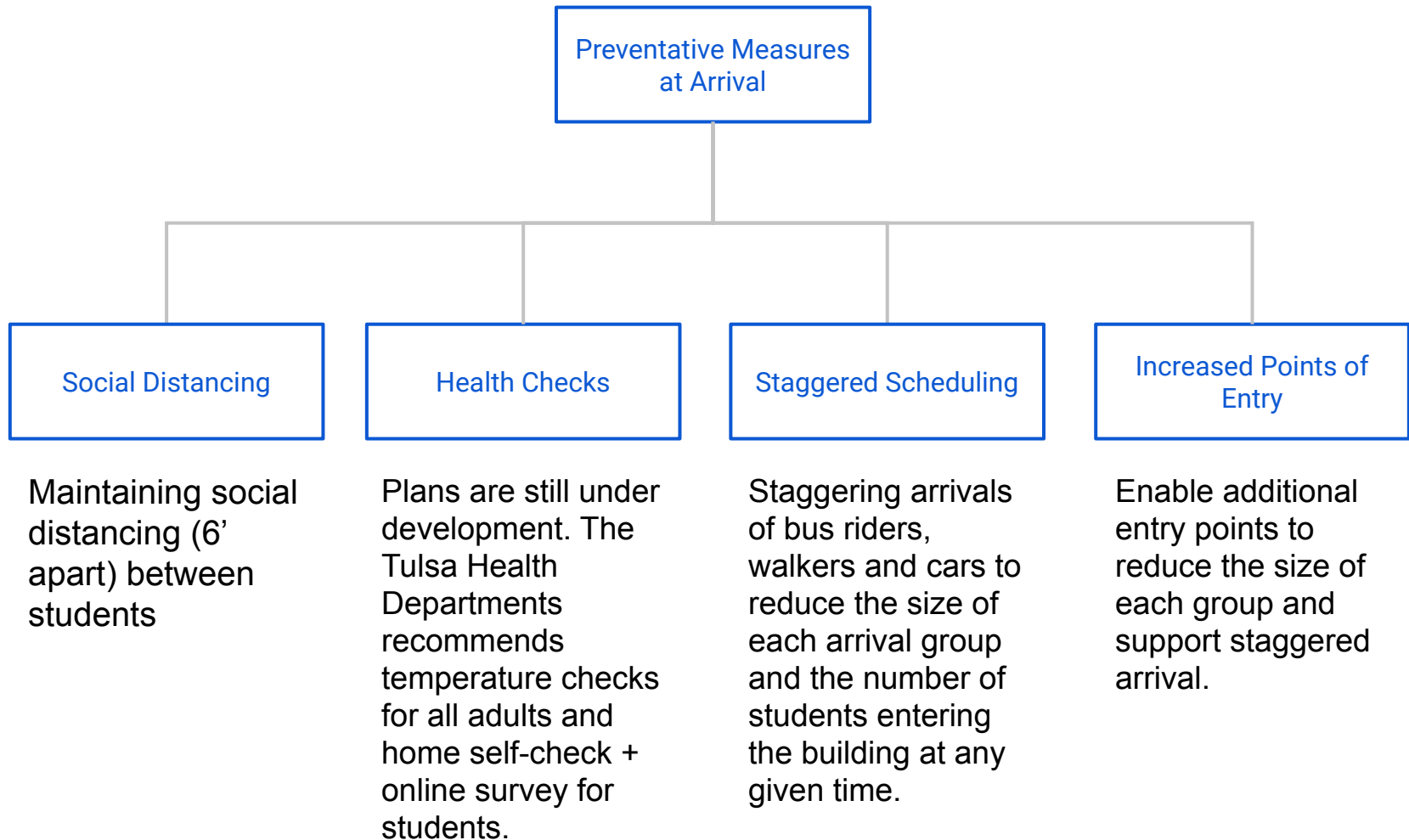
## To help with physical and social distancing, we are incorporating desk and table shields in our safety planning for schools and room settings in buildings.

Across the world, desk and table shields are used as a physical distancing measure and an additional layer of protection from person to person contact.



- Provides additional protection for students when they may take mask off for periods of time.
- Varied designs such as cubby-style on desks, a shield divider on the round tables, or bigger tables in classrooms.
- For office spaces with tables and desks, consideration for plexiglass shields especially for employees sitting in close proximity to each other.

# Strategies for social distancing and safety at arrival/drop-off



# Additional strategies for preparing our facilities

## EDUCATIONAL SPACES

- Avoid use of shared supplies.
- Provide hand sanitizer and cleaning wipes adjacent to shared equipment and copiers.
- Additional resources for in every Special Education classrooms (e.g. Red biohazard bags).
- Lockers - alternatives to storage.

## VENTILATION

- Ventilation - some of our schools need additional sensors and/or be equipped with fans to bring in fresh air regularly.

## RESTROOMS & DRINKING FOUNTAINS

- Tape off alternate lavatory & urinal to facilitate social distancing
- Increase frequency of cleaning and disinfecting surfaces
- Drinking fountains - CDC encourages staff and students to bring their own water to minimize use and touching of water fountains - not all schools have the water bottle fill stations.

## RECESS AND USAGE OF OUTDOOR SPACES

- Recess - We are evaluating and planning on the use of outdoor space and activities.





**Planning for personal protective equipment for students and staff**

# **We will be prepared to provide protection personal equipment to our teachers, students, staff, and visitors.**

- We are planning to provide personal protective equipment to our students and employees as appropriate.
- Masks are the most widely used, but there may be cases where a face shield could be more effective for teachers who work with younger students or in our Deaf Education programs.
- If equipment is available at the schools, we will plan for our custodial team and/or our laundry service to help wash and disinfect masks for students before the next school day.
- The cost of cloth masks could potentially be supported by partnering with local community organizations, especially reaching out to our minority vendors/companies, to help provide cloth masks.



**Establishing cleaning and disinfecting protocols that meet CDC guidelines**



# We will ensure that we have product and equipment in order to implement proper cleaning and disinfecting procedures.

- Ensure adequate hand-washing stations and hand sanitizer dispensers in schools and buildings.
- Evaluate need for additional protective gowns, in the nurse's offices and in our special education classrooms to limit bodily fluid exposure for staff.
- Gloves for our custodial team for cleaning and disinfecting purposes, for school clinics/nurse's offices, and for our staff in our Special Education classrooms.
- Additional backpack electrostatic sprayers and handheld electrostatic sprayers for disinfecting will be needed to ensure support for each school and for our buses/trucks.







**Preparing for the safe operation of  
transportation and meal service**

## Supporting social distancing in our buses will have an impact on our services. Capacity and routing adjustments will be needed.

We are evaluating 3 possible social distancing scenarios in our buses\*:

<b>Scenario 1</b>	Secondary students ride 1/seat: 24/run. Elementary students ride 2/seat: 48/run.
<b>Scenario 2</b>	Secondary students ride 1/seat: 24/run. Elementary students ride 2/seat alternating with 1/seat: 36/run.
<b>Scenario 3</b>	Secondary students ride 1/seat: 24/run. Elementary students ride 1/seat: 24/run.

- We are evaluating recommendations to support transportation for students with special needs based on IEP identified needs.
- Implementing solutions for increased ventilation & safety practices for driver.
- Prepare to support students and adults to wear mask & use hand sanitizer in the bus.
- Enhanced bus sanitation practices including frequency, timing, etc.
- Exploring safety procedures for bus stops.

\* Assuming all regular buses have a nominal capacity of 72.



## **We will modify meal services to ensure social distancing and minimize student gatherings/transitions, while continuing to provide nutritious meals.**

- We will be preparing and packaging meals on site.
- Evaluating process to have meals in the classroom for elementary students, and grab & go stations for secondary students.
- Breakfast & lunch will be prepared and individually packaged.
- Setting up process for grab and go meals for students during distance learning days and/or virtual learning.
- Enhanced cafeteria & kitchen sanitation practices including frequency, timing, etc.





**Training and signage to support  
hygiene practices and social distancing**

**All employees, staff, and students should be familiar with signage as they re-enter buildings and help parents and guests understand what they mean.**

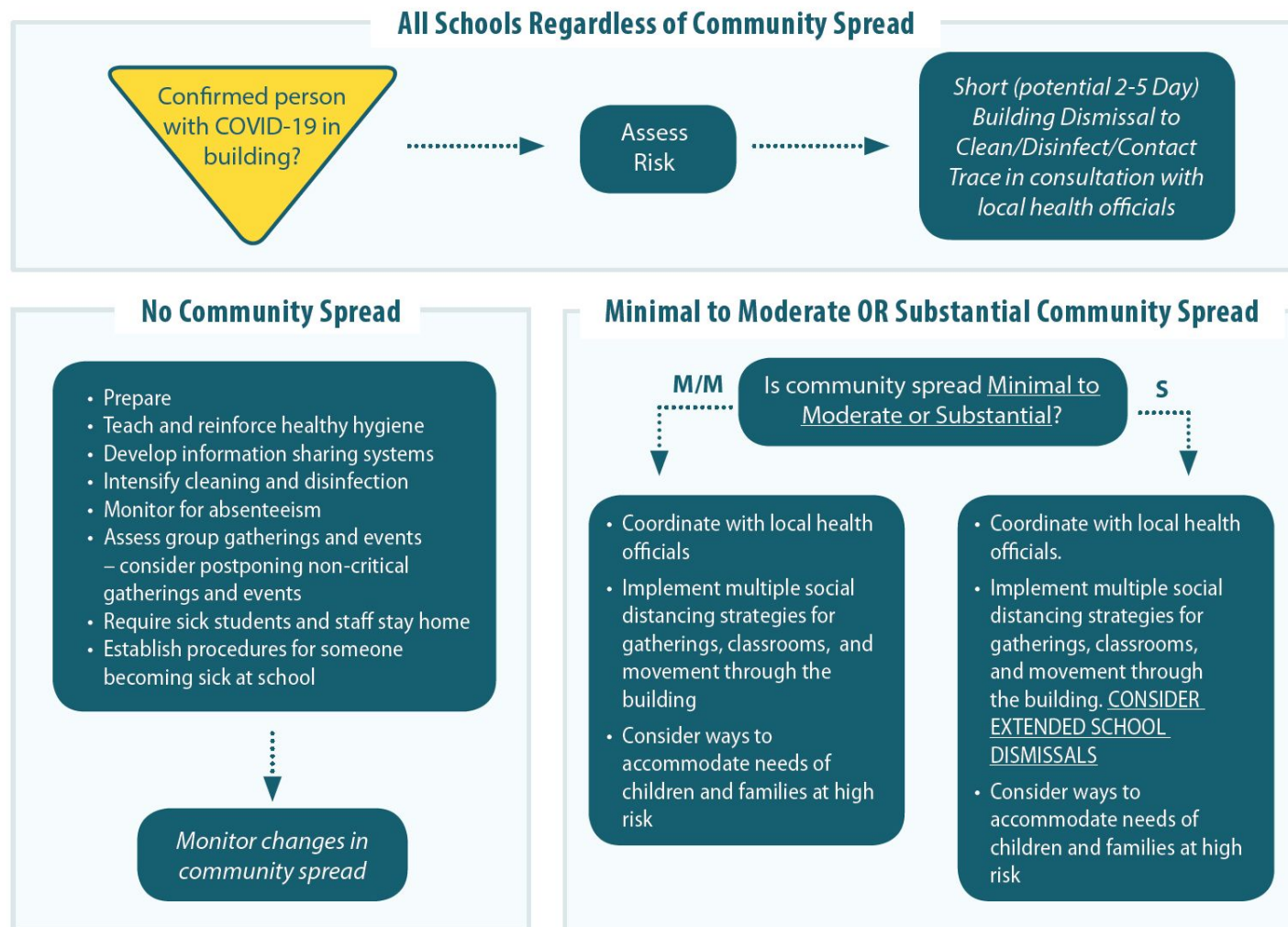
- Age-appropriate safety signage will be printed and provided to all schools so they are placed in designated areas by start of schools.
- Staff training on the type of signage & procedures related to social distancing and directional signs.
- District communication regarding hygiene plan to parents/guardians/families prior to the start of schools.
- Colored tape on floors to demarcate various furniture layouts
- Demarcate circulation patterns.
- Procedures and signage for visitors & dynamics in outdoor areas.





# CDC-recommended approach to handling positive cases & outbreaks

## School Decision Tree





**Health and safety are central to our planning for the 2020-21 school year.**

*Here's what we heard from our team members:*

**"All decisions should be based on health and safety.**

**If kids, staff and families are sick, they won't be at school anyway."**

**"Prioritize safety of entire community. All age groups will be affected by what happens with children."**

**"The safety of teachers and staff along with [that of] their families needs to be kept in mind while planning."**



## Discussion & Questions





# Appendix