

Willard

5015 Garfield

Kansas City, Missouri 64130

Historical Brief

Architect:

Charles A. Smith

Architectural Style:

Mediterranean Elements

Year Built:

1924-1930

Designation:

Eligible

Site Overview

Acreage:

3.15 acres

Square Footage:

48,941 square feet

Number of Floors:

3 floors

Neighborhood:

Blue Hills

Zoning:

R-6

Deed Restrictions:

TBD



Site Details

Closed in 2000, leased until 2006

Auditorium

Gymnasium

Classrooms have exterior entrances

In Green Impact Zone

Roof damage/water infiltration

Cost Management

Utility Costs (as an Open Facility):

Unknown

Appraisal/Fair Market Value:

\$ 0 (2008)

Draft Reuse Assessment

Condition Rating: 2 out of 5



Historic Rating: 4 out of 5



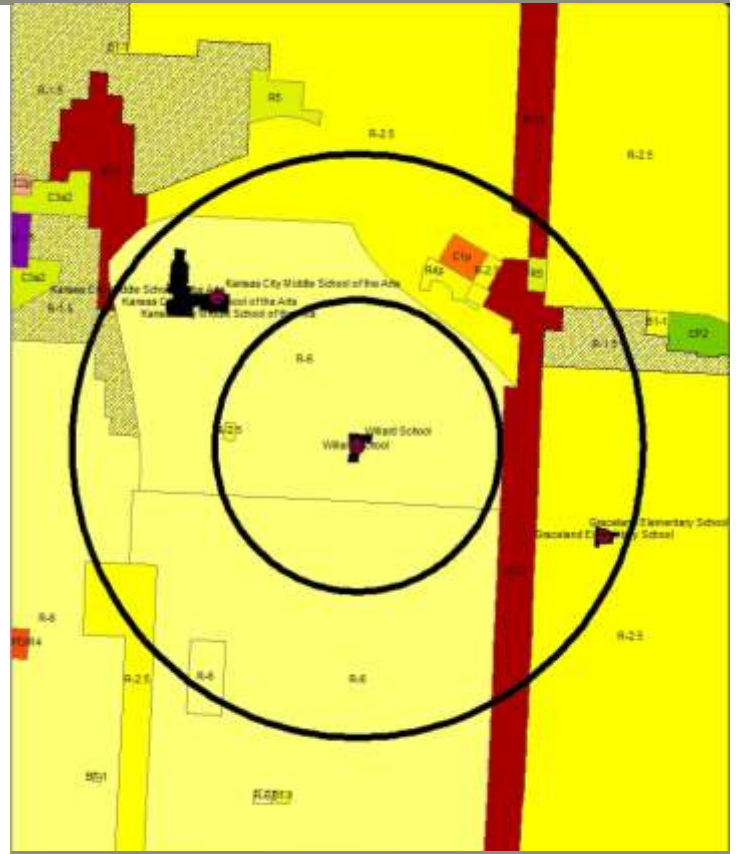
Reuse Potential Rating:

Low/Med

- Mixed Use
- Residential
- Commercial
- Education
- Demolition



Current Land Use Map



Zoning Map

Aerial View: Willard

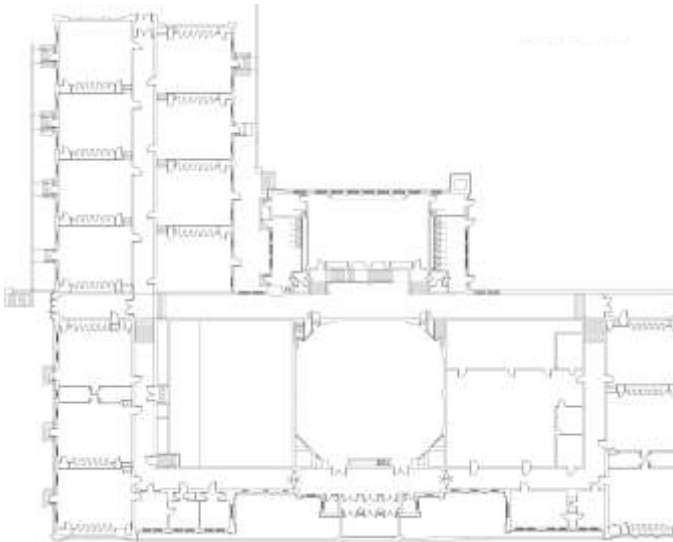


Floor Plans:

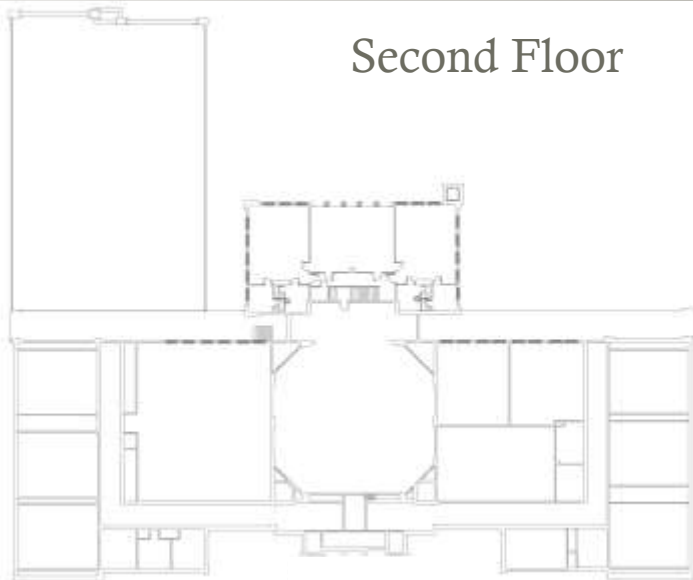
Basement Floor



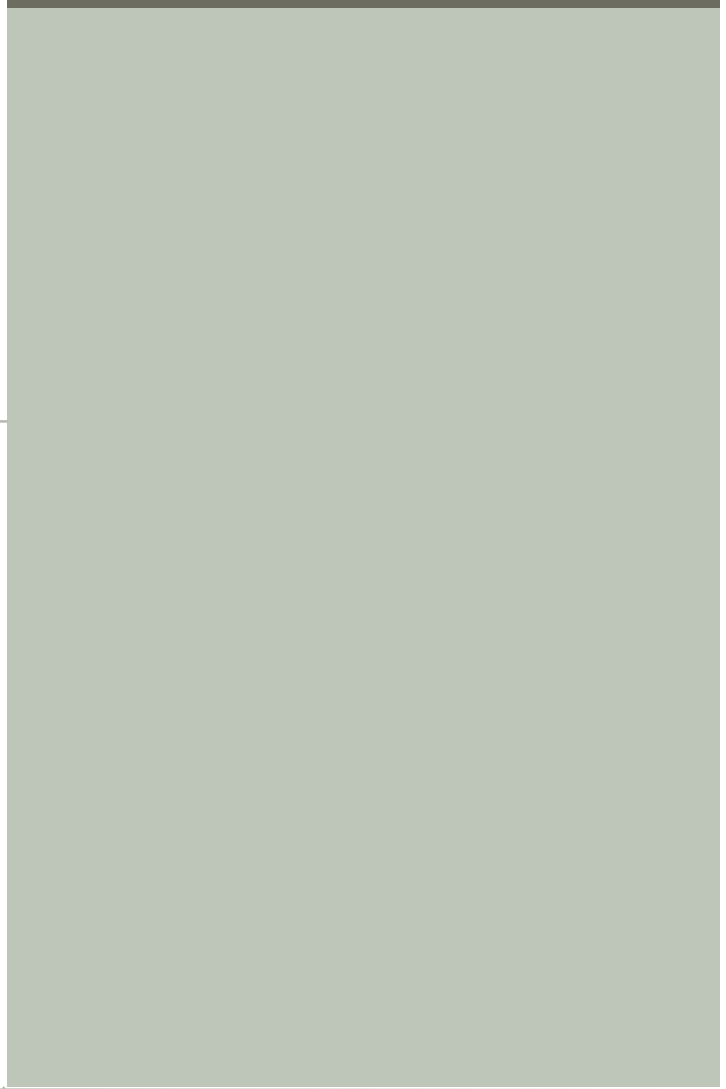
First Floor



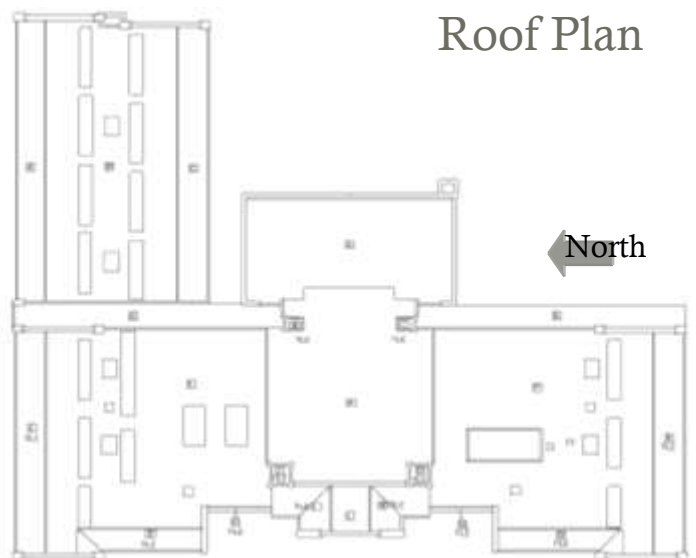
Second Floor



Final Recommendations & Community Priorities



Roof Plan





Exterior Photograph



Interior Photograph



Interior Photograph