

West Rock Creek

8820 E 27th Street

Kansas City, Missouri 64129

Historical Brief

Architect:

Marshall & Brown

Architectural Style:

Modern

Year Built:

1956-1968-1999

Designation:

None

Site Overview

Acreage:

14 acres

Square Footage:

30,250 square feet

Number of Floors:

3 floors

Neighborhood:

Western Blue Township

Zoning:

R-7.5

Deed Restrictions:

TBD



Site Details

Closed in 2010

Capacity for 242 students

Partial A/C

Heating system remodeled in 1999

Aluminum windows with plexiglass

Auditorium/Gymnasium combined

Cafeteria

Elevator

Market Assessment

Appraisal/Fair Market Value:

Market Rating:

Market Potential:

Building Assessment

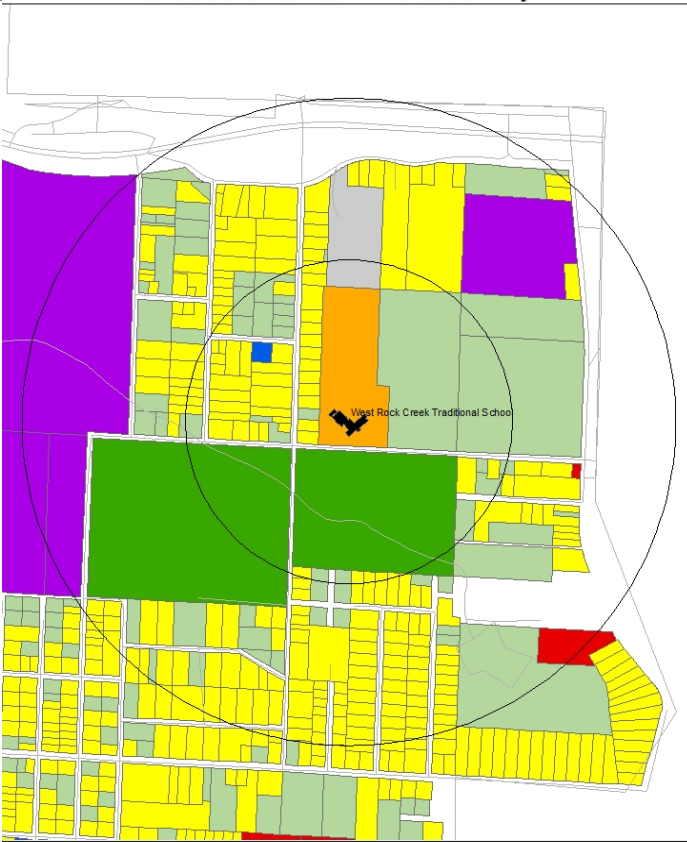
Condition Rating:

Reuse Potential:

Cost Management

Utility Costs (as an Open Facility):

\$4,800/month



The map displays the following zoning areas and features:

- Concentric Circles:** Two black concentric circles are centered on the school location, representing the 1-mile and 2-mile buffers.
- Zoning Labels:**
 - B1-1, R-2.5:** Located in the top left corner.
 - R-2.5:** Large yellow areas in the upper and lower left.
 - R-7.5:** A large yellow area in the center-right.
 - PDM2a:** A red circular area on the left and a red rectangular area in the upper right.
 - PD/RA, R4p, RA:** Located in the bottom right corner, with RA being green and PD/RA/R4p being yellow.
 - RA:** A green area at the bottom center.
- Point of Interest:** A purple pin icon labeled "West Rock Creek Traditional School" is located at the center of the concentric circles.

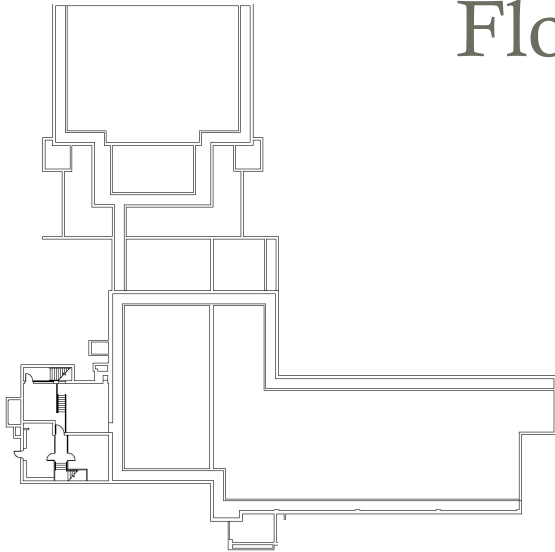
Zoning Map

Aerial View: West Rock Creek

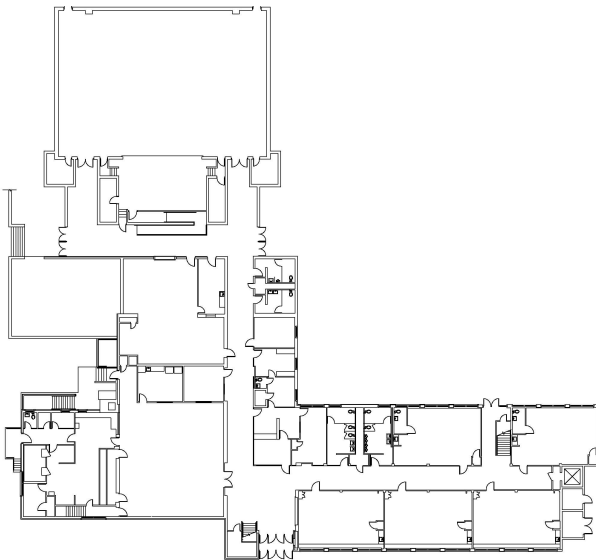


Floor Plans:

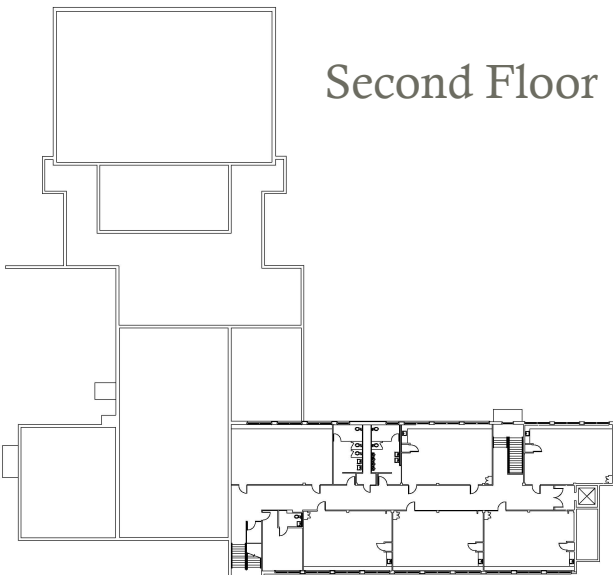
Final Recommendations & Community Priorities



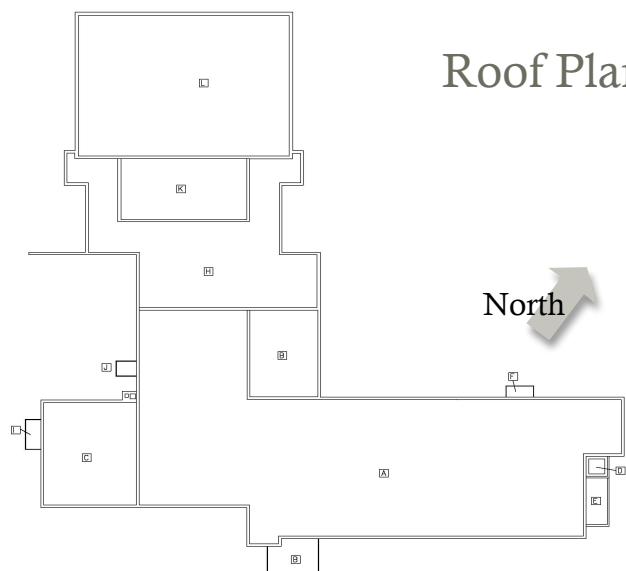
Basement Floor



First Floor



Second Floor



Roof Plan

North

8820 E 27th Street

Kansas City, Missouri 64129



Exterior Photograph



Interior Photograph



Interior Photograph