

Westport Middle

300 E. 39th Street

Kansas City, Missouri 64111

Historical Brief

Architect:

Charles A. Smith

Architectural Style:

English Renaissance

Year Built:

1924-1992

Designation:

Eligible

Site Overview

Acreage:

4.16 acres

Square Footage:

166,650 square feet

Number of Floors:

8 floors

Neighborhood:

Old Hyde Park

Zoning:

R-5, R-1.5, B1-1, B3-2

Deed Restrictions:

TBD



Site Details

Closed in 2009

Capacity for 848 students

Partial A/C

2 steam boilers

Auditorium

2 gymnasiums

Cafeteria

Indoor pool

TV studio

Masonry restoration (2007)

Cost Management

Utility Costs (as an Open Facility):

\$13,000/month

Draft Reuse Assessment

Condition Rating: 3 ½ out of 5



Historic Rating: 4 out of 5



Reuse Potential Rating:

High

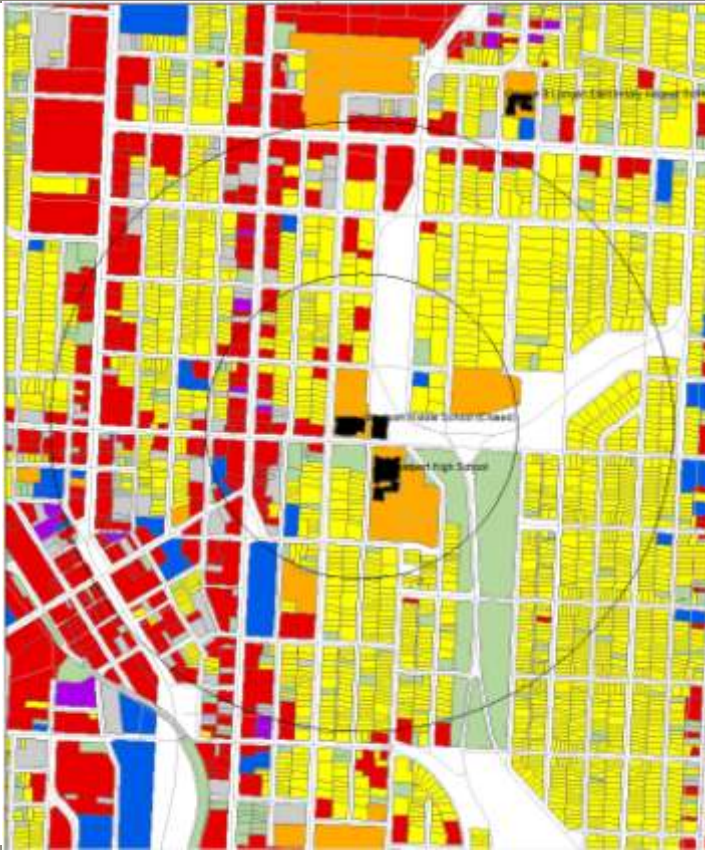
- Mixed Use
- Residential
- Education
 - Post-secondary
 - Middle/High

Med

- Office

Complimentary Use

- Community



Current Land Use Map



Zoning Map

Aerial View: Westport Middle



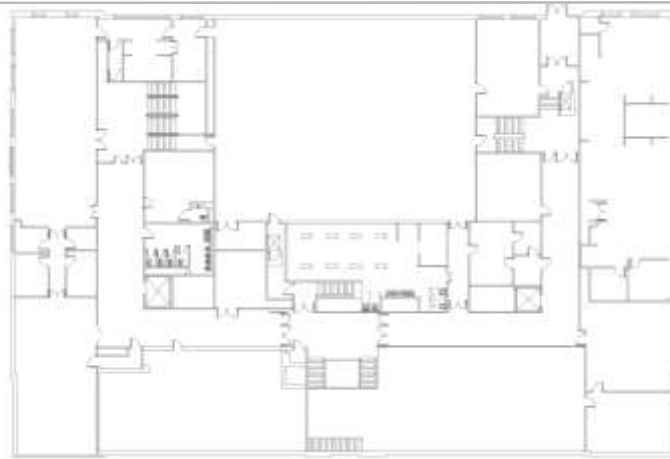
Floor Plans:



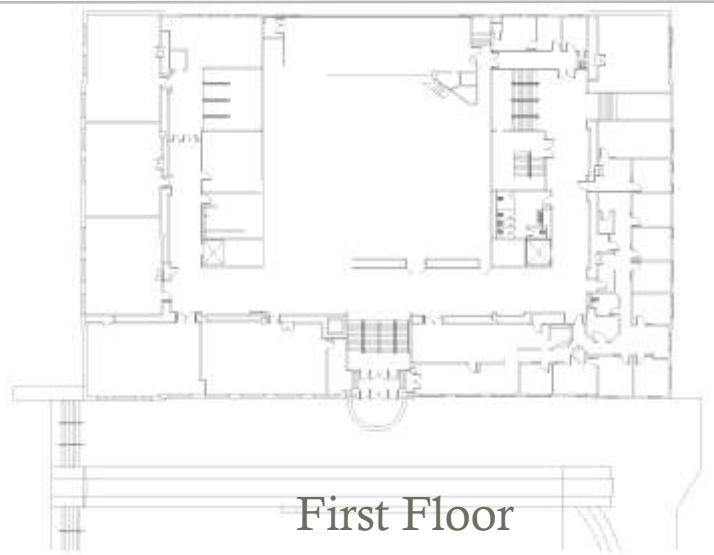
Basement Floor



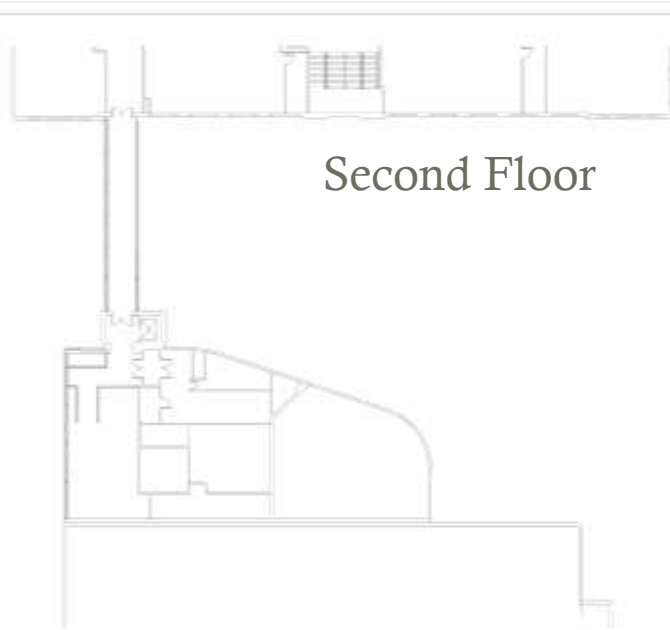
Sub-Basement Floor



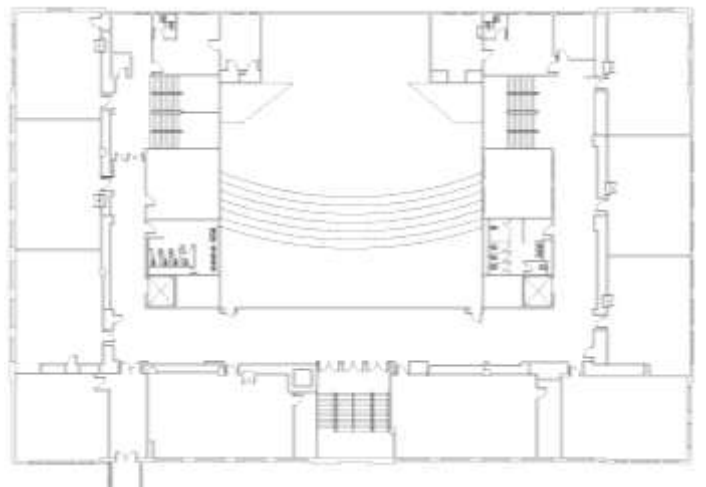
Ground Floor



First Floor



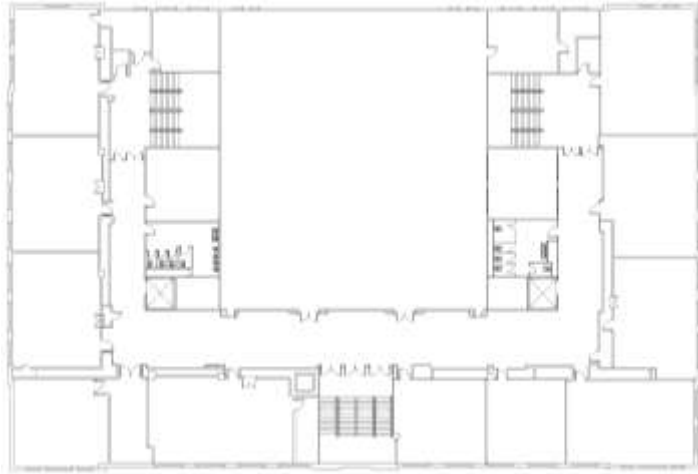
Second Floor



Second Floor

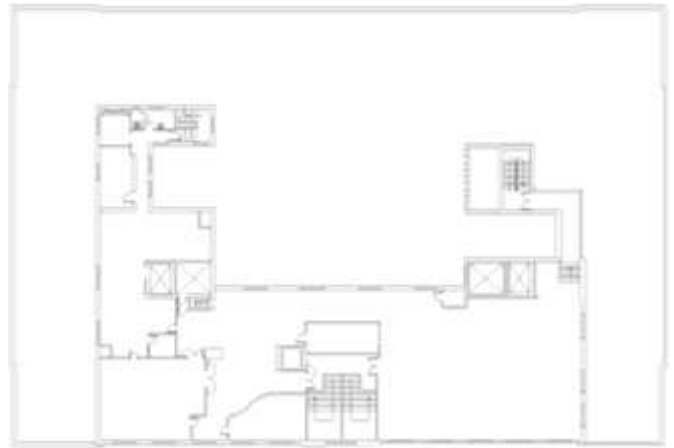


Floor Plans II: Third Floor



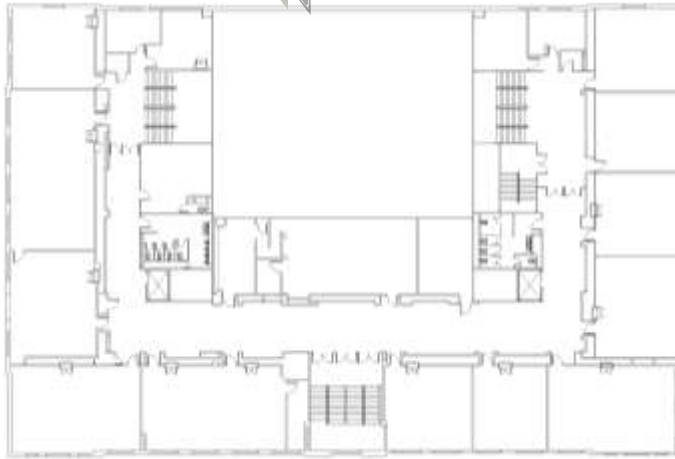
North

Fifth Floor



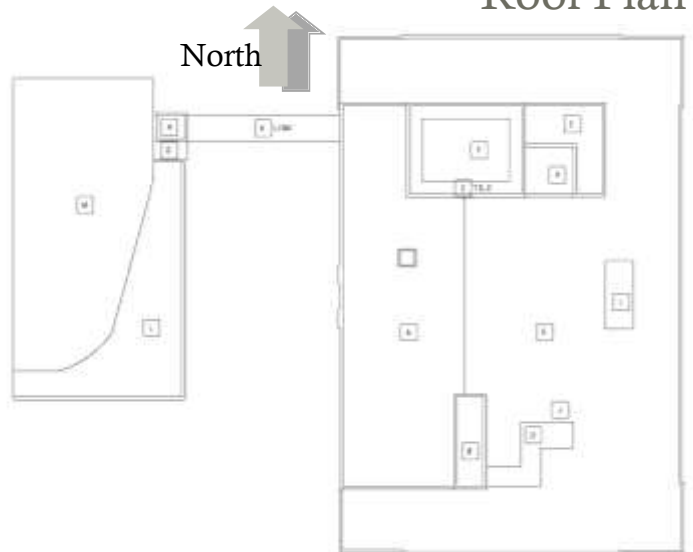
North

Fourth Floor



North

Roof Plan



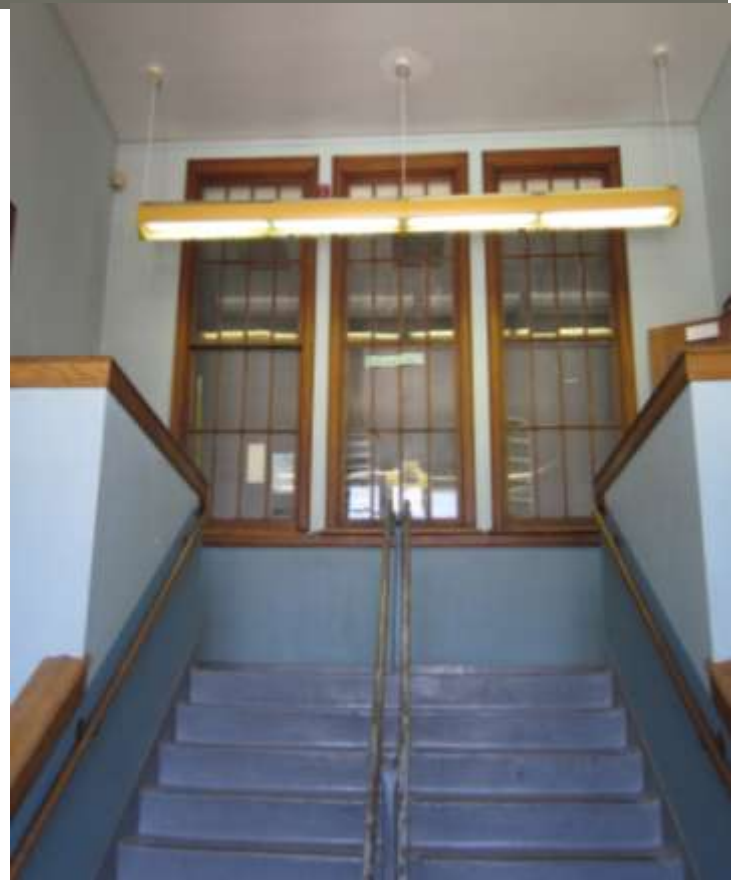
Final Recommendations & Community Priorities



Interior Photograph: Westport Middle



Interior Photograph



Interior Photograph