

# Westport High

315 E. 39<sup>th</sup> Street

Kansas City, Missouri 64111

## Historical Brief

**Architect:**

Charles A. Smith

**Architectural Style:**

Jacobethan Elements

**Year Built:**

1908-1964-1992

**Designation:**

Eligible

## Site Overview

**Acreage:**

9.25 acres

**Square Footage:**

181,196 square feet

**Number of Floors:**

5 floors

**Neighborhood:**

Southmoreland

**Zoning:**

R-1.5, R-2.5, B3-2

**Deed Restrictions:**

TBD



## Site Details

Closed in 2010

Capacity for 1,429 students

Partial A/C

2 low pressure steam boilers

Auditorium

2 gymnasiums

Cafeteria

Track and tennis courts

## Cost Management

**Utility Costs (as an Open Facility):**

\$21,000/month

## Draft Reuse Assessment

**Condition Rating:** 3 out of 5



**Historic Rating:** 4 out of 5



**Reuse Potential Rating:**

**High**

- Mixed Use

**Med**

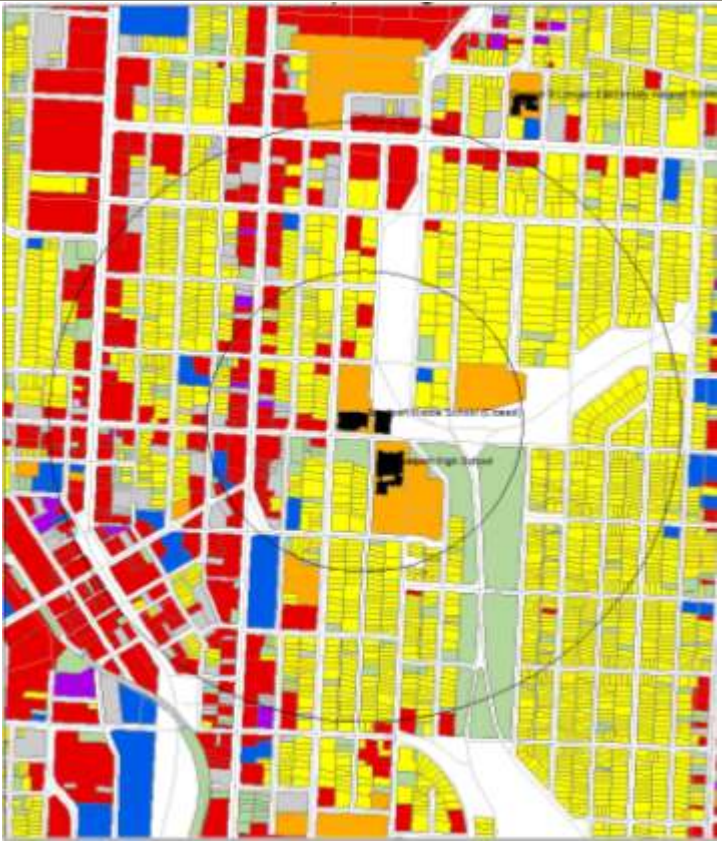
- Residential
- Education
  - Post-secondary
  - Middle/High
- Office

**Complimentary Use**

- Community

315 E. 39th Street

Kansas City, Missouri 64111



Current Land Use Map

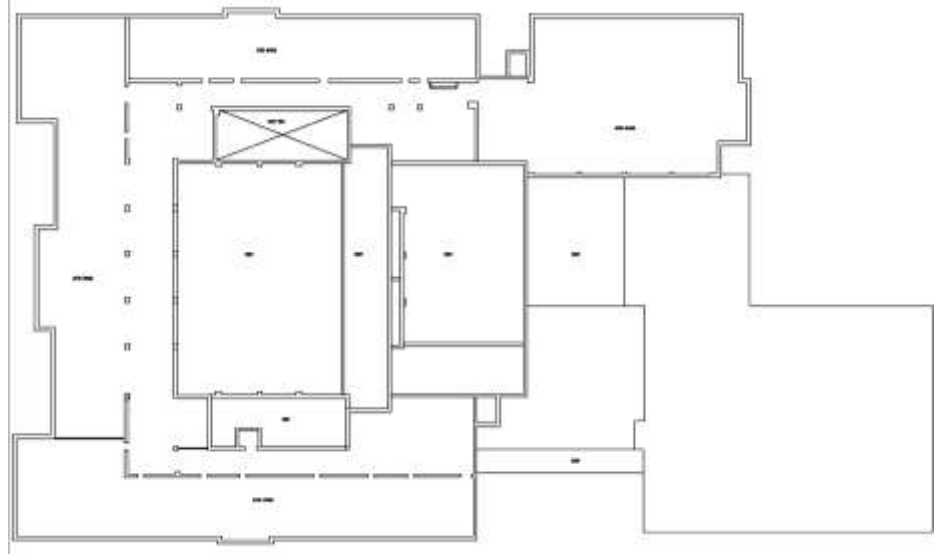
Zoning Map

Aerial View: Westport High



# Floor Plans:

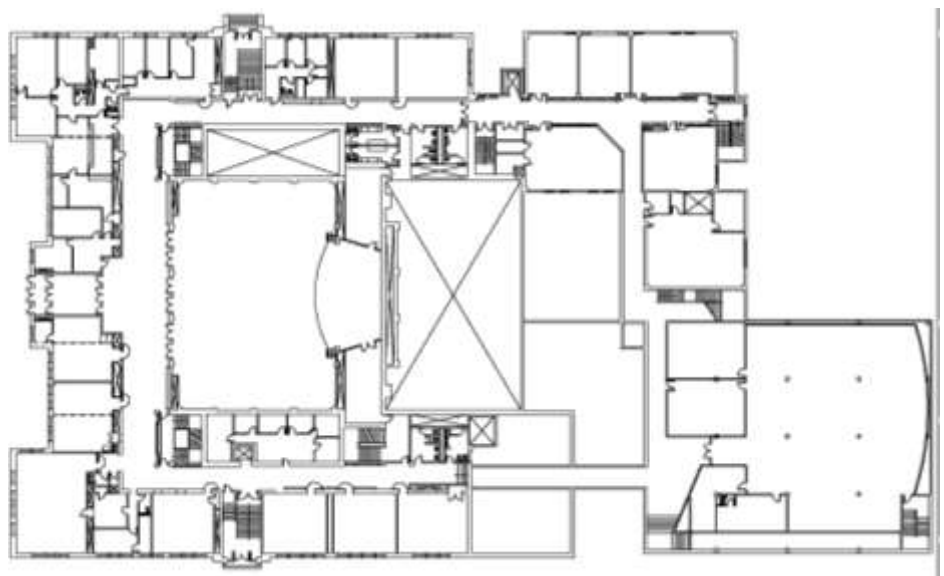
Attic-Floor Plan



Ground Floor



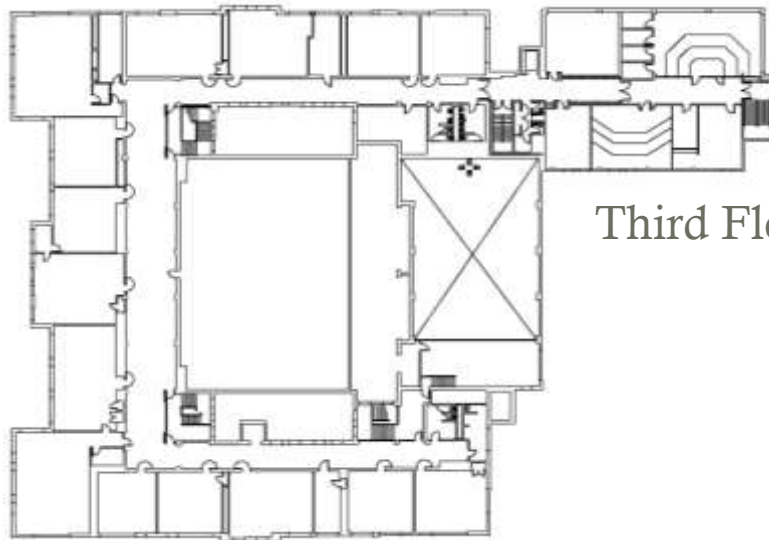
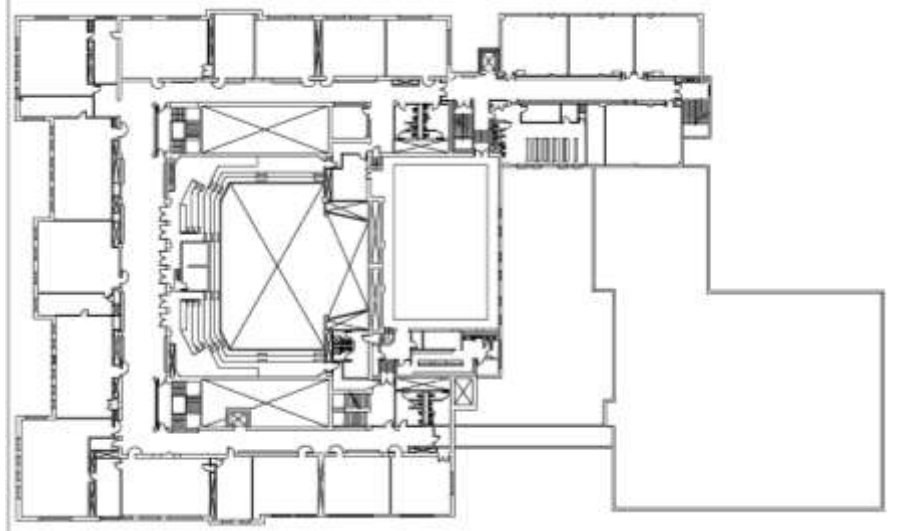
First Floor



# Floor Plans II:

## Second Floor

### Final Recommendations & Community Priorities



## Third Floor

## Roof Plan

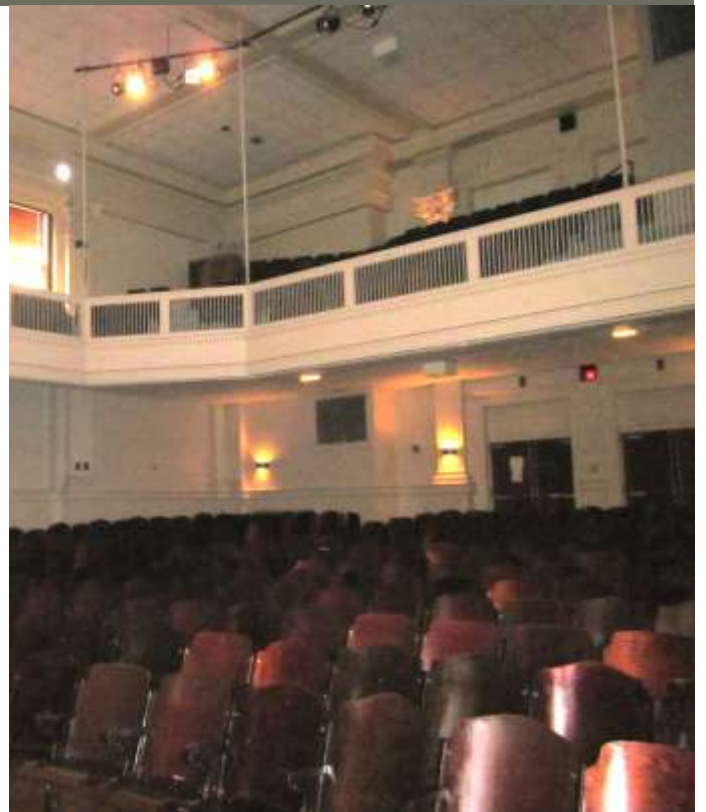




Exterior Photograph: Westport High



Exterior Photograph



Interior Photograph