

Thacher

5008 Independence Avenue

Kansas City, Missouri 64124

Historical Brief

Architect:

Charles A. Smith

Architectural Style:

Second Renaissance Revival

Year Built:

1900-1914

Designation:

Eligible

Site Overview

Acreage:

2.12 acres (8-acre site shared with NE Middle)

Square Footage:

34,100 square feet

Number of Floors:

3 floors

Neighborhood:

Indian Mound

Zoning:

B3-2/R-2.5

Deed Restrictions:

TBD

Site Details

Closed in 2009

18 classrooms

Capacity for 190 students

Fire/water damage (Jan 2011)

Gymnasium in 1914 addition

Located in Special Review District

Cost Management

Utility Costs (as an Open Facility):

\$4,600/month



Draft Reuse Assessment

Condition Rating: 1 ½ out of 5



Historic Rating: 3 out of 5



Reuse Potential Rating:

High

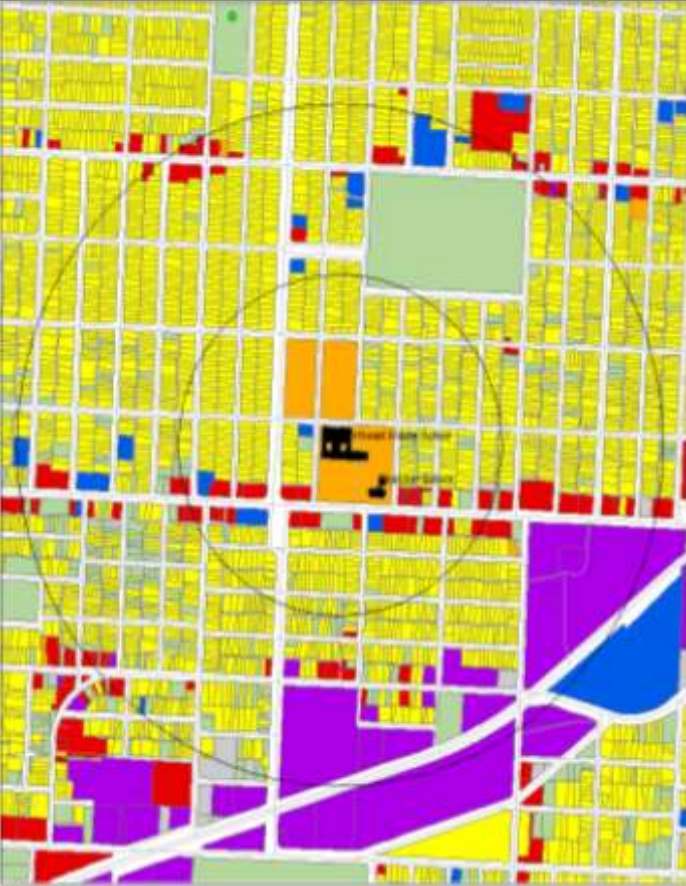
- Partial demolition (1914 addition)

Med

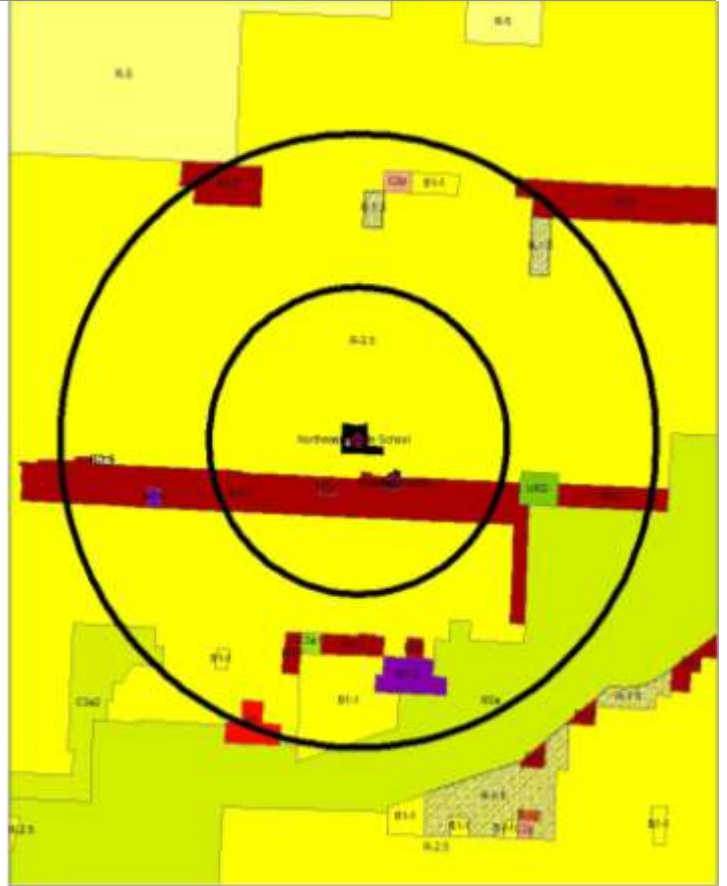
- Full demolition
 - Allows for redevelopment and/or additional open space

Low

- Reuse of structure as:
 - Office
 - Residential
 - Mixed Use
 - Community



Current Land Use Map



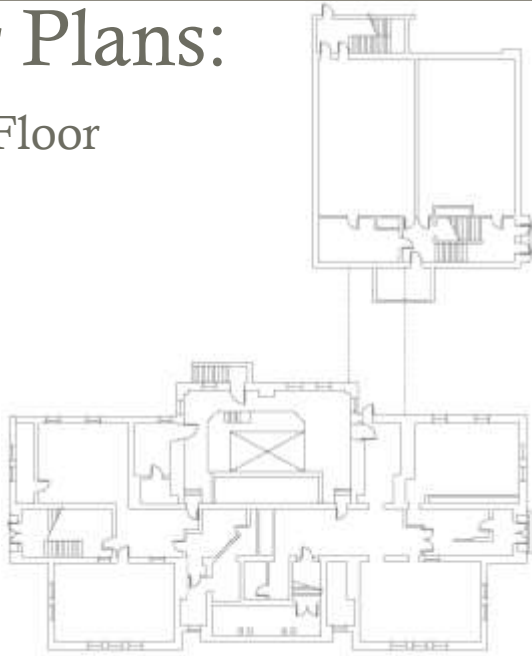
Zoning Map

Aerial View: Thacher

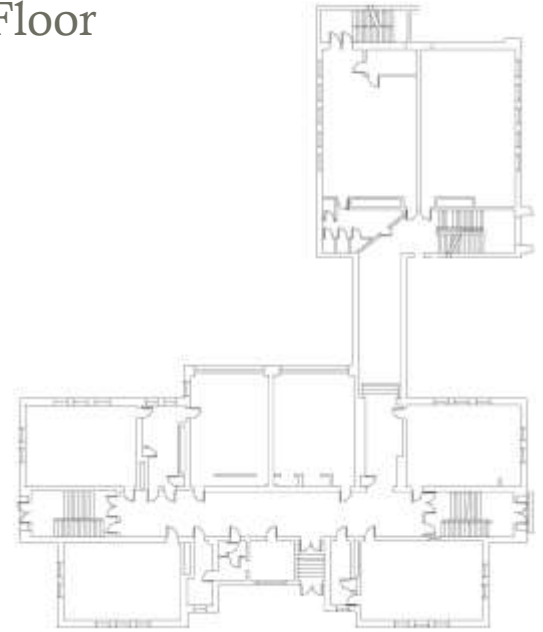


Floor Plans:

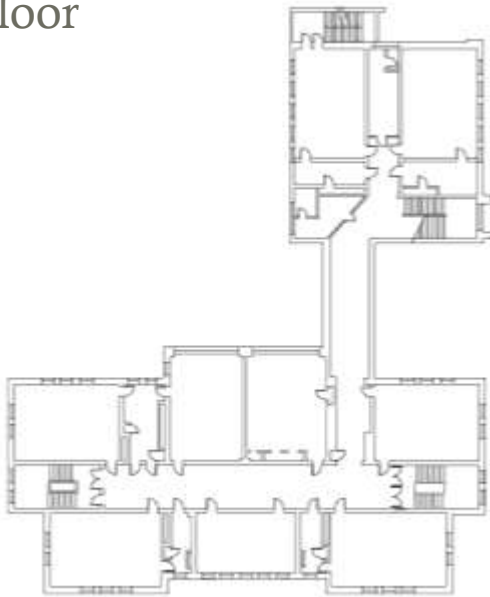
Ground Floor



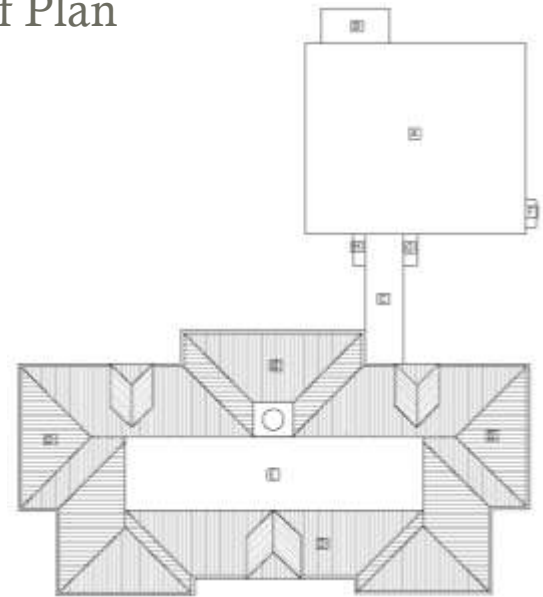
First Floor



Second Floor



Roof Plan



Final Recommendations & Community Priorities



Exterior Photograph



Exterior Photograph



Interior Photograph