

School Reopening Task Force

June 30, 2020



become what's next

Agenda

6:00 - 6:05 Review Agenda and Meeting Objectives

6:05 - 6:15 Review Data and Primary Sources of Information

6:15 - 6:30 Review Workforce Screening Approach & District Work Teams
Introduction

6:30 - 7:45 Shaping our Approach to Reopening - Consideration of
Recommendations (each recommendation slide will include large/small group
discussion, modifications (if necessary), and large group consensus building)

7:45 - 7:50 Recommendation Summary

7:50 - 8:00 Review objectives and wrap-up



become what's next

Meeting Objectives

1. I am able to explain how the recently-issued DPI and WIAA Guidelines will inform the work of District Staff
2. I know how the feedback provided by the Task Force informed the District's approach to its Workforce Screening Protocol
3. I am able to express my opinion about task force recommendations and work collaboratively to build consensus around several recommendations



become what's next

Critical Success Factors

1. Develop a master facility reopening plan that responds to the requirements and best practices of school reopening during a pandemic.
2. Adopt appropriate metrics to guide reopening/closure.
3. Operate as a fiscal steward to the community.



become what's next

Group Norms and Commitments

- Be present, prepared and be engaged
- Mute your microphone when you are not speaking
- Speak from experience whenever possible
- Speak to one another as peers, not subordinates
- Resist the urge to interrupt
- Resist the urge to monopolize the discussion
- Encourage input from everyone



become what's next

Task Force Key Data and Primary Resources

- Key Data

- [Waukesha County COVID-19 Dashboard](#)

- Primary Resources

- [*Wisconsin Department of Public Instruction - Education Forward](#)
- [*Wisconsin Interscholastic Athletic Association \(WIAA\) Guidance for Summer Activities](#)
- [Waukesha County Large Group Gatherings](#)
- [CDC Guidance for Schools](#)
- [Wisconsin DHS Schools and Childcare](#)

*New since last meeting



become what's next

Wisconsin DPI - Education Forward

- 87-page document
- **Task Force** will consider adopting DPI's Goals and Assumptions (pages 4-5)
- Identifies three education models: In-Person Learning - Physically Distanced Learning - Virtual Learning (p. 8)
- Presents several modified schedule approaches for consideration (pp. 9-17)
- Presents guidance for Districts and Schools on many topics such as governance, operations, technology, infection control, and mental health (pp 18-47)
- Presents guidance on Instructional Program topics such as teaching and learning, libraries, special education, English learners, and gifted and talented (pp. 48-79)



become what's next

WIAA Guidance for Summer Activities

- **Task Force** will consider these guidelines at its July 15 meeting
- Many of these guidelines have already been deployed for our own summer activity camps that have started, or will begin in July
- The guide includes points of emphasis such as face coverings, return to workouts, good hygiene, daily screening and isolation of anyone with symptoms
- The guide establishes guidelines for screening, gathering size, facility cleaning/disinfection, athletic equipment use and hydration for three risk levels - Low, Moderate, High



become what's next

Task Force Recommendation for Consideration

Workforce Screening Protocol

Based on input and guidance from the School Reopening Task Force; the District is pursuing a self-screening approach with daily recording via an app/website.

This screening process allows for: Confidentiality, routine that creates a daily habit of monitoring one's health and wellbeing during pandemic, ease of use, cost effective, keeps symptomatic people off-site, added layer of accountability while not collecting an abundance of information on staff, and has been successful in other settings that have reopened. This recommendation is supported by the [CDC](#) [as a virtual health check](#).



become what's next

Elmbrook Work Teams Overview

- The District has created 40 work teams to plan for school reopening in the Fall
- Each team has 4-8 members and will develop and execute a project plan this summer
- Over 150 different staff members will participate on one or more work teams
- Weekly work team leader meetings will help facilitate communication and highlight the interdependence of these teams
- Teams are accountable to their project champion for meeting their project outcomes



become what's next

Background Data and Information

Family Survey (conducted June 9-16, 3011 Respondents)

If students are able to return to school in the Fall following CDC guidelines, would you send your child to school?

- 76.8% - Yes
- 20.6% - Undecided
- 2.6% - No

Even if students are able to return in the Fall, I would prefer, or at least consider, a virtual learning option instead of face-to-face instruction.

- 21% - Yes
- 26% - Undecided
- 52% - No



become what's next

Background Data and Information

Staff Survey (conducted June 23 - 29, 725 Respondents as of 6/25)

When school resumes in the Fall, do you plan to return to work if school is:

	Traditional, In-Person Model	In-Person, Physically Distanced or Hybrid Model	Virtual Model
Yes	81%	90%	93%
Undecided	16%	9%	6%
No	3%	1%	1%



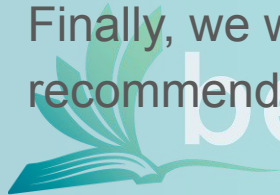
become what's next

Recommendations for Consideration

In order to meet our aggressive reporting timeline, several recommendation proposals will be presented to the Task Force for each of the next three meetings. After each recommendation will be presented, a small or large group discussion will ensue and participants will be asked to consider:

1. What is your initial reaction to the recommendation as presented?
2. Would you make any changes or modifications to the recommendation?
3. What concerns or questions do you have about the recommendation?
4. Are you supportive of this recommendation? If not, what could be done to gain your support?

Finally, we will participate in a consensus-building activity to accept/reject the recommendation.



become what's next

Task Force Recommendation for Consideration

School Reopening Plan could include the following statement:

The School District of Elmbrook should create a school reopening plan that offers all students the option to attend school in-person each day, while providing a virtual learning option for students who, for health or other reasons, are unable to return to school buildings.



become what's next

Task Force Recommendations for Consideration

The School Reopening Plan could include:

From the Wisconsin Department of Public Instruction's (DPI) [Education Forward Document](#):

1. The adoption of DPI's *Goals for Reopening* (page 4)
2. The adoption of DPI's *Assumptions for Public Health* (pages 4-5)



become what's next

Task Force Recommendations for Consideration

The School Reopening Plan could include the following recommendations:

1. Students in Grades K-8 are divided into cohorts to limit spread and support contact tracing
2. Physical distancing strategies that consider the age of the students are deployed in all schools
3. In order to mitigate the spread of the pandemic, no visitors or volunteers will be allowed at school during the school day.



become what's next

Task Force Recommendations for Consideration

School Reopening Plan could include the following transportation recommendations:

1. All students will have the opportunity to ride the bus each day
2. Strategies will be deployed to reduce ridership (e.g. car pools, family drop-off, walk to school)
3. When on the bus, strategies will be deployed to group family members and create space between students, when possible
4. In the absence of social distancing, we will mitigate health risks by requiring a face covering for all individuals using district-provided transportation.



become what's next

Task Force Recommendations for Consideration

School Reopening Plan could include the following recommendation:

1. To adopt the recommendations used for [Determining Release from Isolation and Quarantine Cases and their Contacts in Day Care Settings or Schools](#) as prepared by the Department of Health Services.

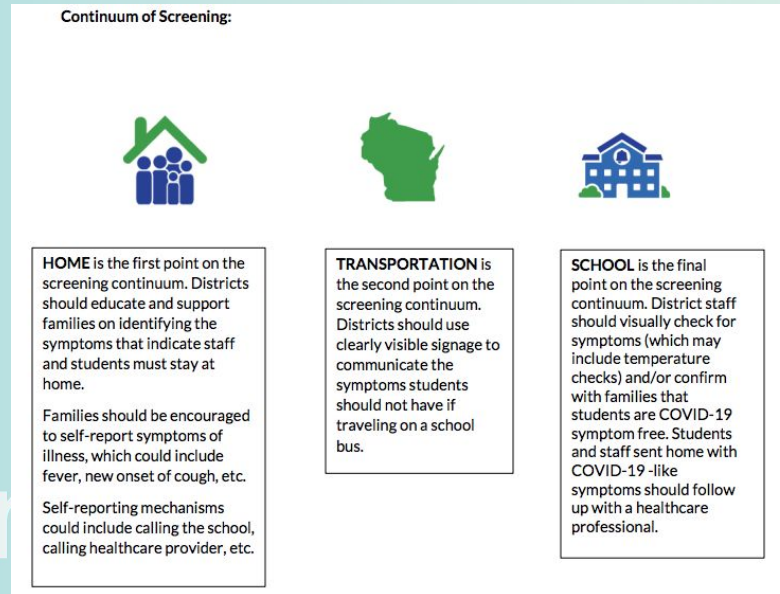


become what's next

Task Force Recommendations for Consideration

School Reopening Plan could include the following student screening protocol:

1. The adoption of DPI's Continuum of Screening Protocol, found on p. 7 of the [Interim COVID-19 Infection Control and Mitigation Measures for Schools](#)



Review Objectives

- ★ I am able to explain how the recently-issued DPI and WIAA Guidelines will inform the work of District Staff
- ★ I know how the feedback provided by the Task Force informed the District's approach to its Workforce Screening Protocol
- ★ I was able to express my opinion about task force recommendations and work collaboratively to build consensus around several recommendations



become what's next

2020 School Reopening Task Force Timeline

- June 16, 2020 - Initial Convening of Task Force at 6pm-8pm
- June 30, 2020 - School Reopening Task Force Meeting #2
- July 14, 2020 - Task Force Chair - Progress Report to Board of Education (Optional attendance)
- July 15, 2020 - School Reopening Task Force Meeting #3
- July 28, 2020 - School Reopening Task Force Meeting #4
- August 4, 2020 - School Reopening Task Force Meeting #5 (if necessary)
- August 11, 2020 - School Reopening Report Presented to Board of Education



become what's next

Next Meeting - July 15, 2020

Agenda Topics

- Key Data Review, Resource Updates
- Work Team Updates
- Recommendations regarding:
 - Face Coverings
 - Athletic Guidelines
 - Large Group Gatherings
 - And so much more...



become what's next