

HIGHLIGHTS OF THE SAM HOUSTON REOPENING PLAN

2020-2021

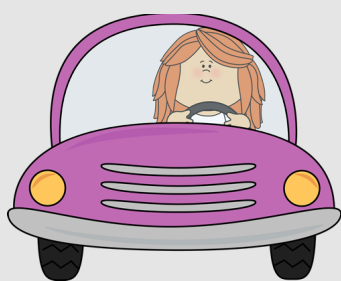


1 SMOKIE SIDEKICKS

In order to reduce student interactions, we are pairing each class with a "Smokie Sidekick Class." These Smokie Sidekick Groups (SSGs) will eat lunch, go to recess, & sit at arrival & dismissal together. These groups will help ensure students are around 50 or less students during the school day.

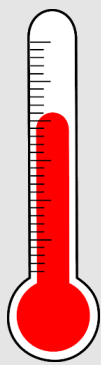
2 ARRIVAL PROCEDURES

All students except bus riders must be dropped off at the front entrance. Parents will no longer be allowed to get out of the car to walk their students into the building. Any student that arrives at school after 7:35 AM will not be allowed to go to the cafeteria & will go directly to their classroom once their temperature has been checked. If you want your child to be around the fewest children possible, eating breakfast at home & dropping off between 7:35-7:50 is the safest option.



3 TEMPERATURE CHECKS & THE CLINIC

Every student will have their temperature checked before entering the building. Should a student have a fever at SHE above 100.4, the student will go to the back room of the clinic until a parent arrives to come pick them up. The MCS Response Plan details the district's procedures if there is a positive COVID case.



4 MASKS

Students & staff members may elect to wear a mask at any time. Students & staff are encouraged to wear a mask during transitions, arrival & dismissal. Staff members assigned to check temperatures must wear a face covering at all times.



5 LUNCH & RECESS

Smokie Sidekick Groups (SSGs) will eat in the cafeteria once every three days to reduce the amount of students in the cafeteria. The other two days students will eat in their classrooms or at designated outside areas with a TA. Each SSG will share recess time. Only two SSGs will be on the playground at one time & each SSG will go to a different area of the playground to ensure that there are limited interactions between the groups.



6 DISMISSAL PROCEDURES

Bus Riders will dismiss at the back of the school. Car Rider students will be spread out on the covered benches out front & will wait to be called for parent pick-up. Students will sit in their classes & next to their SSGs to reduce student interactions. There will be two lines of cars in the front & a cone system implemented to increase safety & efficiency. Students & parents must listen closely for their name & cone number.

