

# Swinney

1106 W. 47<sup>th</sup> Street

Kansas City, Missouri 64112

## Historical Brief

**Architect:**

Charles A. Smith

**Architectural Style:**

Tudor Revival/Collegiate  
Gothic

**Year Built:**

1915-1928

**Designation:**

None

## Site Overview

**Acreage:**

2.6 acres

**Square Footage:**

54,373 square feet

**Number of Floors:**

4 floors

**Neighborhood:**

West Plaza

**Zoning:**

R-1.5/R-2.5

**Deed Restrictions:**

TBD

## Site Details

Closed in 2010

17 classrooms/ 416 seat  
capacity

Full A/C

2 low pressure steam boilers

Single pane aluminum windows  
with plexiglass

Auditorium

Gymnasium

Cafeteria

Elevator

## Cost Management

**Utility Costs (as an Open Facility):**

\$7,200/month



## Draft Reuse Assessment

**Condition Rating:** 4 ½ out of 5



**Historic Rating:** 2 out of 5



**Reuse Potential Rating:**

**High**

- Mixed Use
- Residential
- Education

**Med**

- Office
- Community

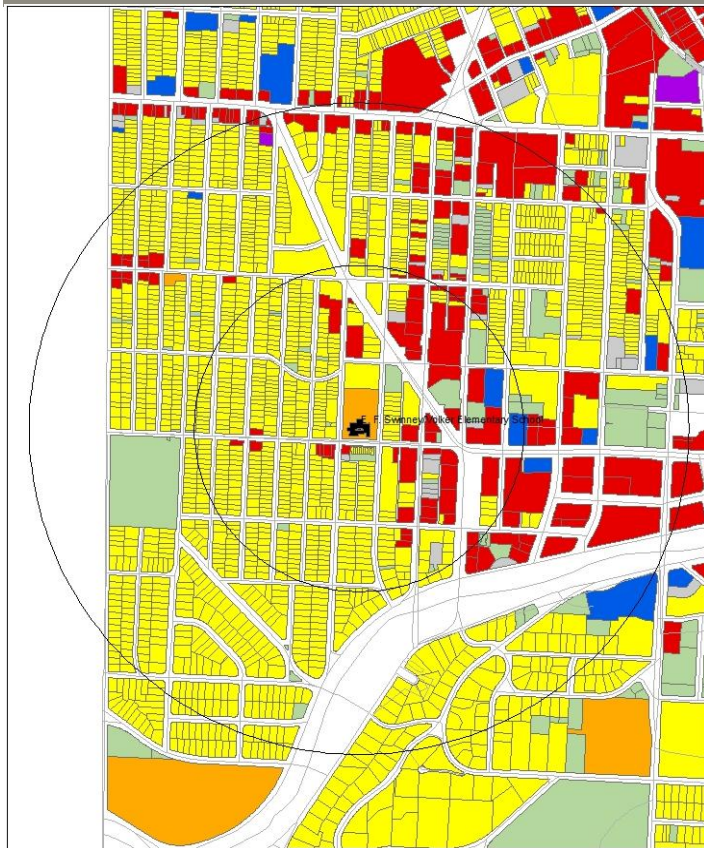
**Low**

- Demolition

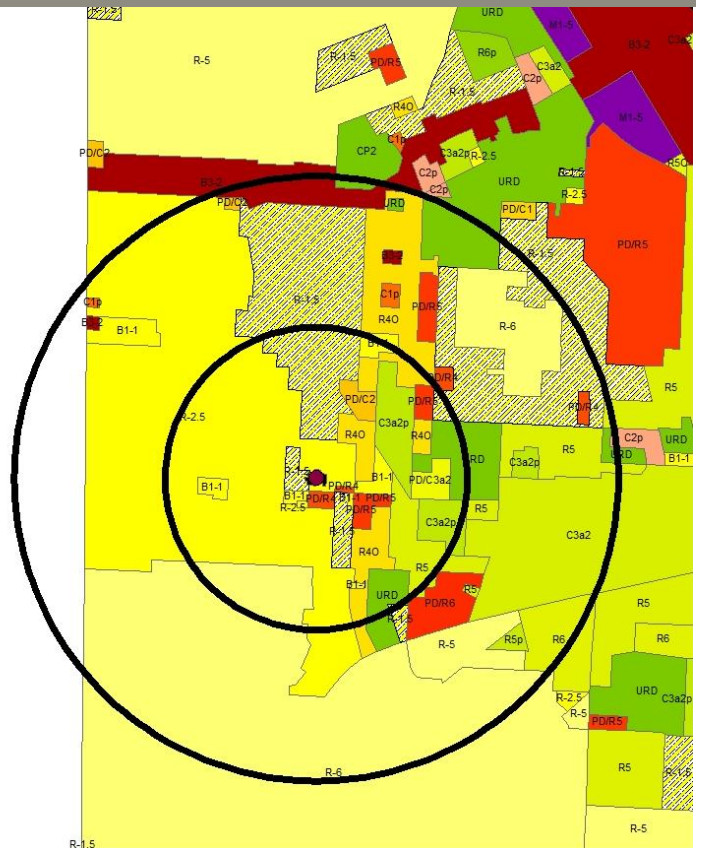


1106 W. 47<sup>th</sup> Street Kansas City, Missouri 64112

1106 W. 47<sup>th</sup> Street Kansas City, Missouri 64112

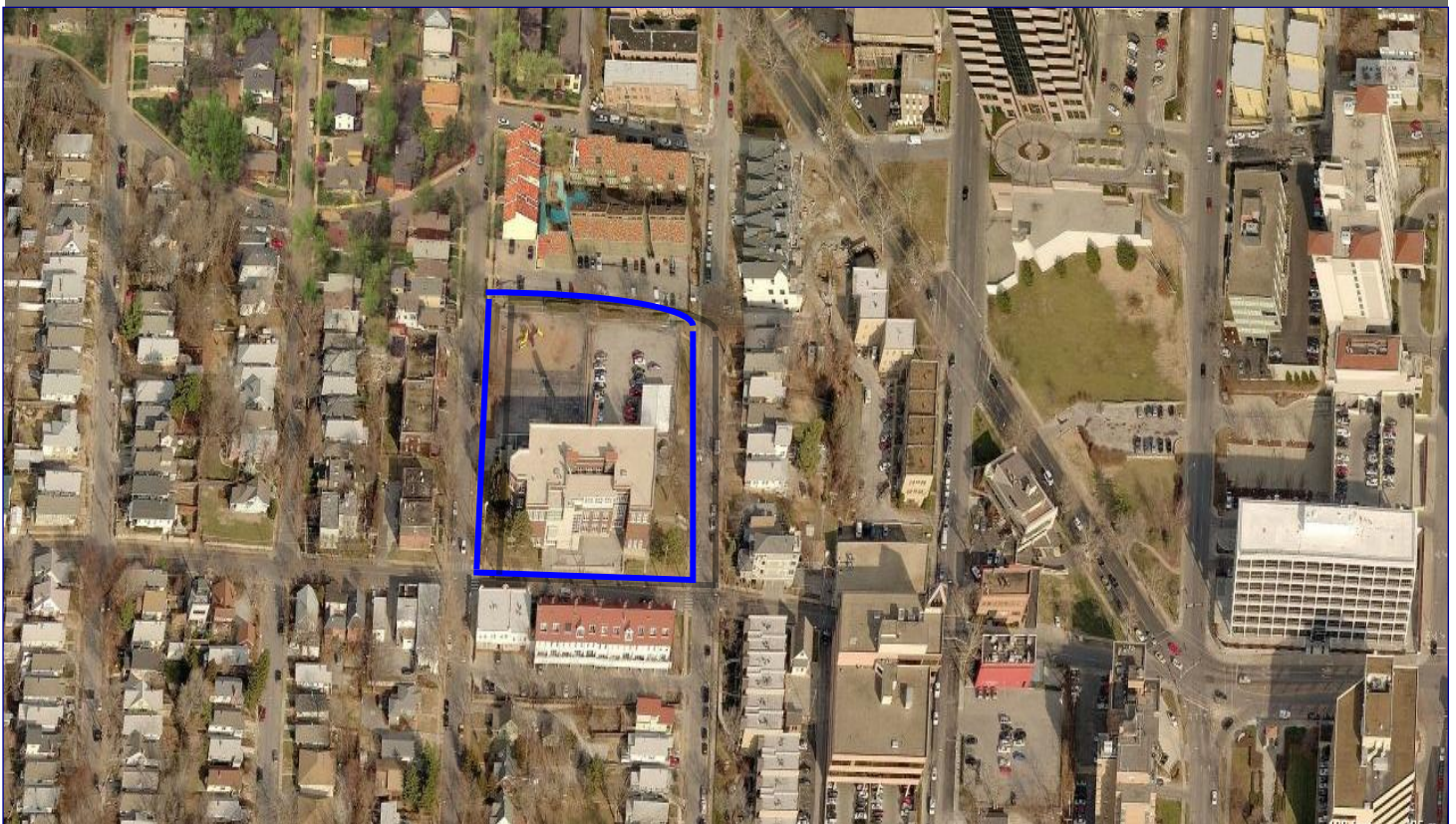


## Current Land Use Map



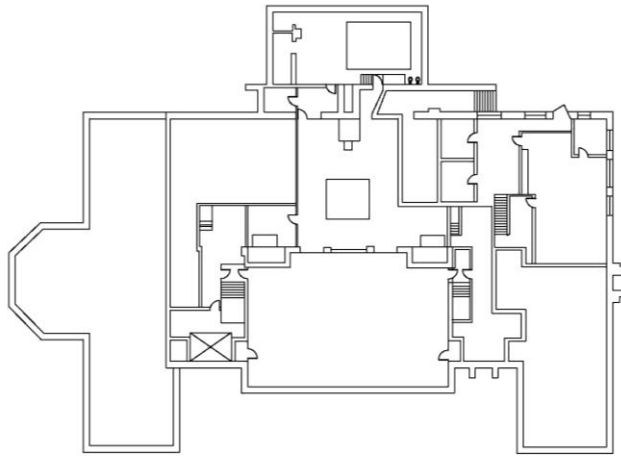
# Zoning Map

Aerial View: Swinney



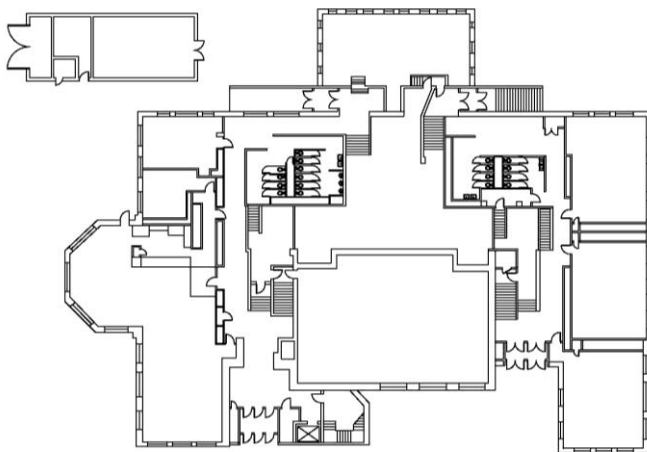


# Floor Plans:

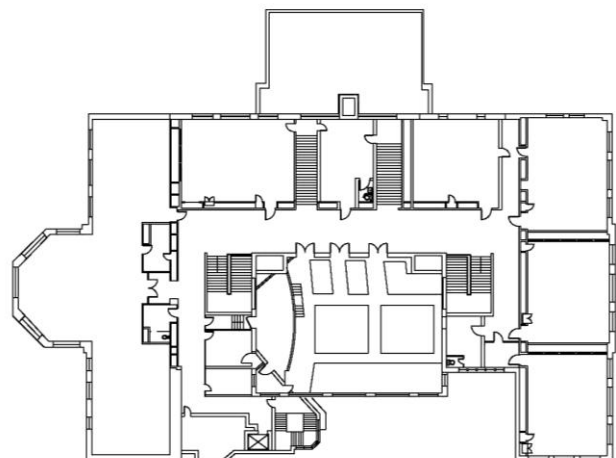


Basement Floor

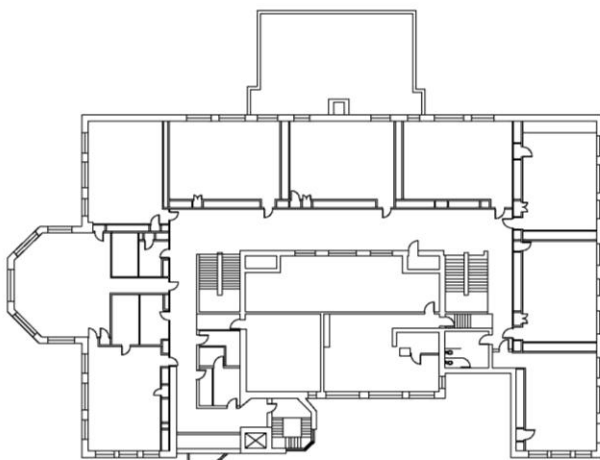
First Floor



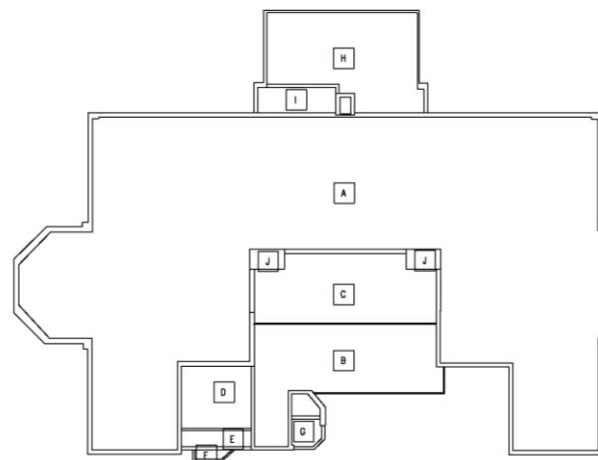
Second Floor



Third Floor



Roof Plan



1106 W. 47<sup>th</sup> Street

Kansas City, Missouri 64112

## Final Recommendations & Community Priorities



Interior Photograph



Exterior Photograph



Interior Photograph