

# Robeson

8201 Holmes Road

Kansas City, Missouri 64130

## Historical Brief

**Architect:**

Manuel Morris

**Architectural Style:**

Jacobethan/Classical

**Year Built:**

1957-1993

**Designation:**

Eligible

## Site Overview

**Acreage:**

20.1 acres

**Square Footage:**

151,880 square feet

**Number of Floors:**

3 floors

**Neighborhood:**

Rockhill Manor

**Zoning:**

R-6, R-1.5

**Deed Restrictions:**

None



## Site Details

Closed in 2006  
Gymnastics Gym  
Water infiltration/water damage  
Auditorium  
Gymnasium  
Cafeteria  
Elevator

## Cost Management

**Utility Costs (as an Open Facility):**  
\$6579/month

## Reuse Assessment

**Condition Rating:** 2 out of 5



**Historic Rating:** 3 out of 5



**Reuse Potential Rating:**

**High**

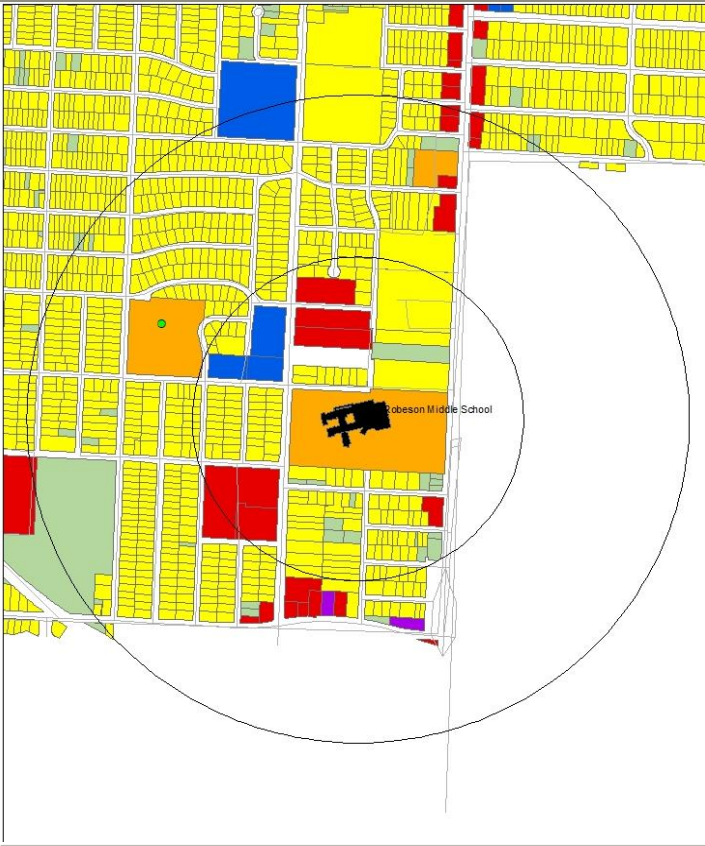
- Demolition
- New construction
- Community Use
  - Community center

**Med**

- Education
- Mixed-use
  - Religious

8201 Holmes Road

Kansas City Missouri 64130



Current Land Use Map

Zoning Map

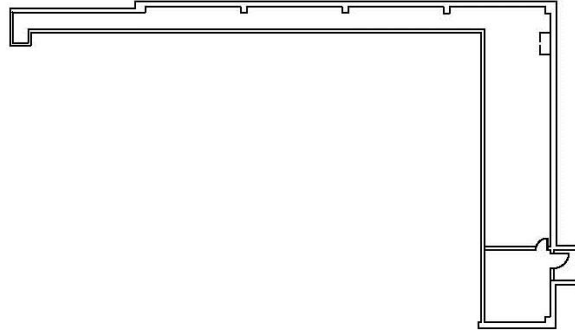
Aerial View: Robeson



# Floor Plans:

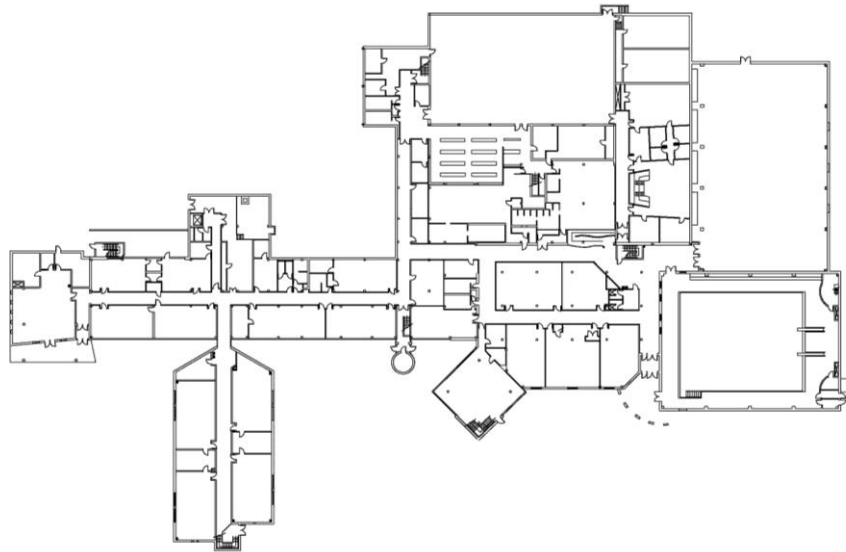
## Basement

North



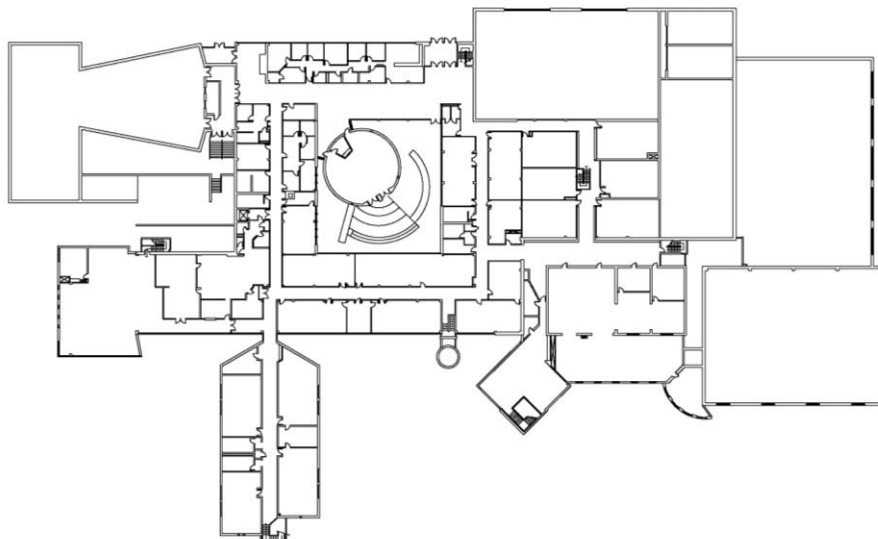
---

## First Floor



---

## Second Floor



8201 Holmes Road

Kansas City Missouri 64130



Exterior Photograph



Interior Photograph



Interior Photograph