

# Pershing

5915 Park Avenue

Kansas City, Missouri 64130

## Historical Brief

**Architect:**

Charles A. Smith

**Architectural Style:**

Mediterranean Influence

**Year Built:**

1924-1927-1930-1953

**Designation:**

Eligible

## Site Overview

**Acreage:**

3.56 acres

**Square Footage:**

46,851 square feet

**Number of Floors:**

4 floors

**Neighborhood:**

Blue Hills

**Zoning:**

R-6

**Deed Restrictions:**

TBD



## Site Details

Closed in 2009

Partial A/C

2 low pressure steam boilers

Aluminum windows with  
plexiglass

Auditorium

Gymnasium

Cafeteria

## Cost Management

**Utility Costs (as an Open Facility):**

\$7,900/month

## Draft Reuse Assessment

**Condition Rating:** 3 ½ out of 5



**Historic Rating:** 4 out of 5



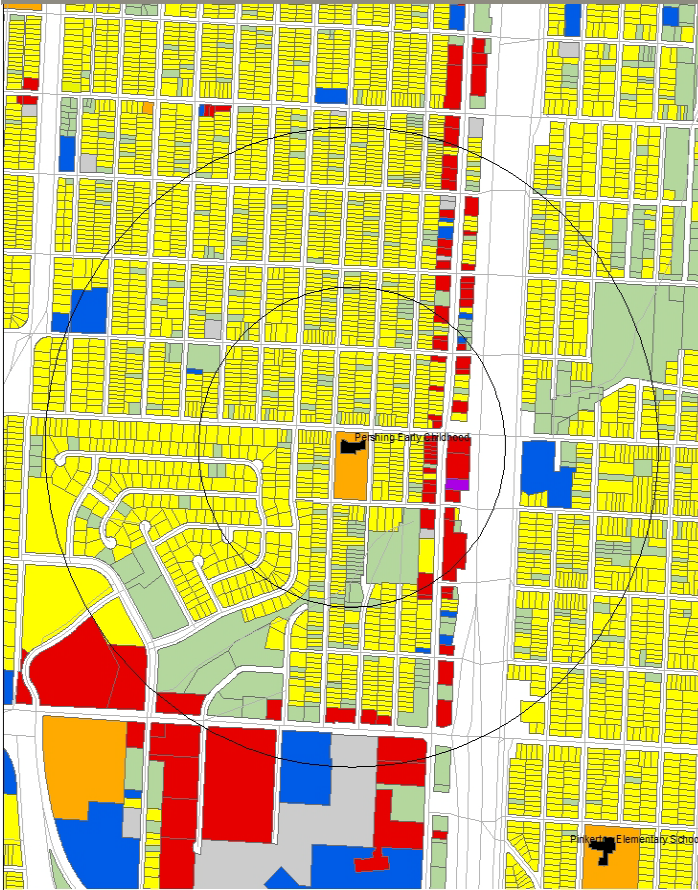
**Reuse Potential Rating:**

**Med**

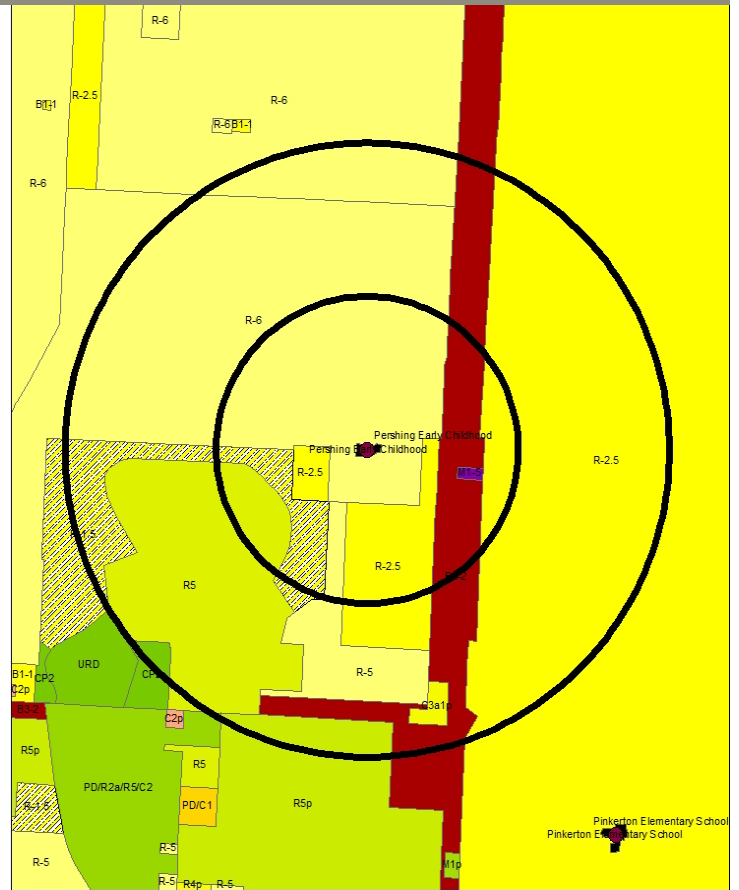
- Residential
- Mixed Use
- Education

**Low**

- Commercial



Current Land Use Map



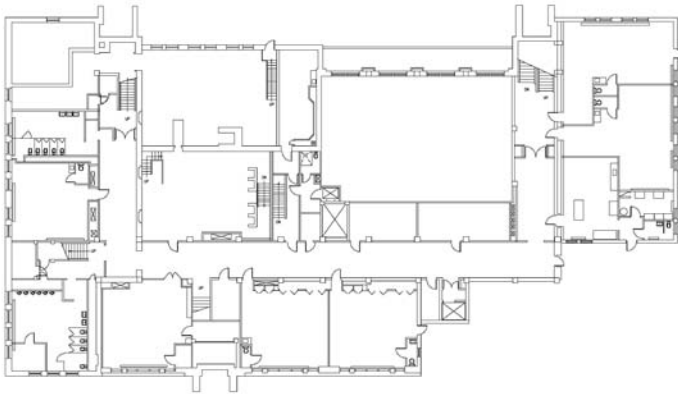
Zoning Map

Aerial View: Pershing

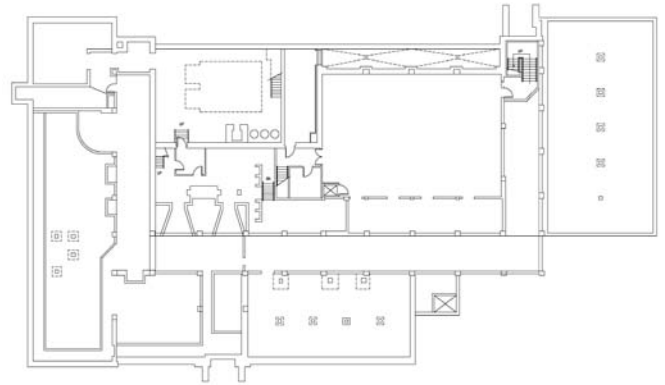




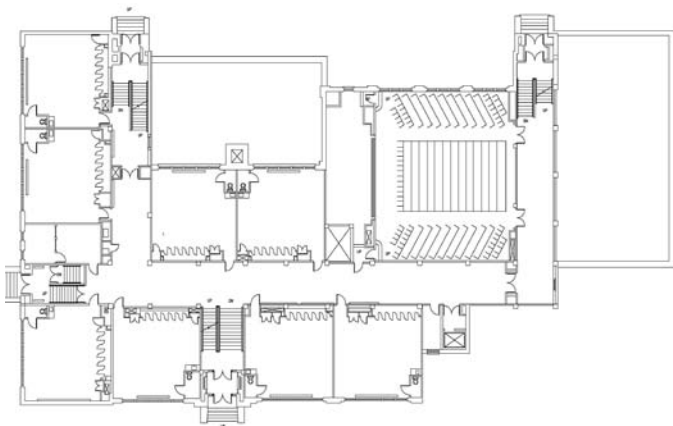
## Floor Plans:



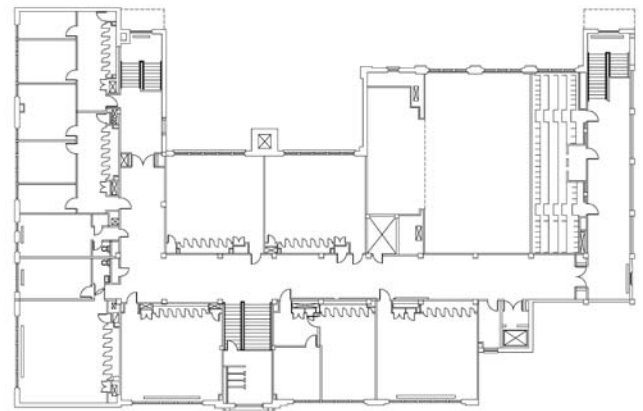
Ground Floor



Ground Floor: Gym Plan



First Floor



Second Floor

## Final Recommendations & Community Priorities

5915 Park Avenue

Kansas City, Missouri 64130



Interior Photograph



Interior Photograph



Exterior Photograph