

## THE FEMALE SEXUAL AND REPRODUCTIVE SYSTEM: WHAT'S THE STORY?

Name \_\_\_\_\_ Period \_\_\_\_\_ Date \_\_\_\_\_

*Directions:* Using the terms provided, fill in the blanks to make this explanation of the female sexual and reproductive system correct. Each term can be used only once.

<b>cervix</b>	<b>clitoris</b>	<b>fallopian tube</b>	<b>ovaries</b>
<b>sperm cell</b>	<b>endometrium</b>	<b>outer labia</b>	<b>ovulation</b>
<b>uterus</b>	<b>puberty</b>	<b>hymen</b>	<b>PAP</b>
<b>menstruation</b>	<b>vagina</b>	<b>vulva</b>	<b>inner labia</b>

Many changes happen in females bodies during \_\_\_\_\_. For example, about once a month, an egg is released from one of the almond-shaped organs known as the \_\_\_\_\_. This process is called \_\_\_\_\_.

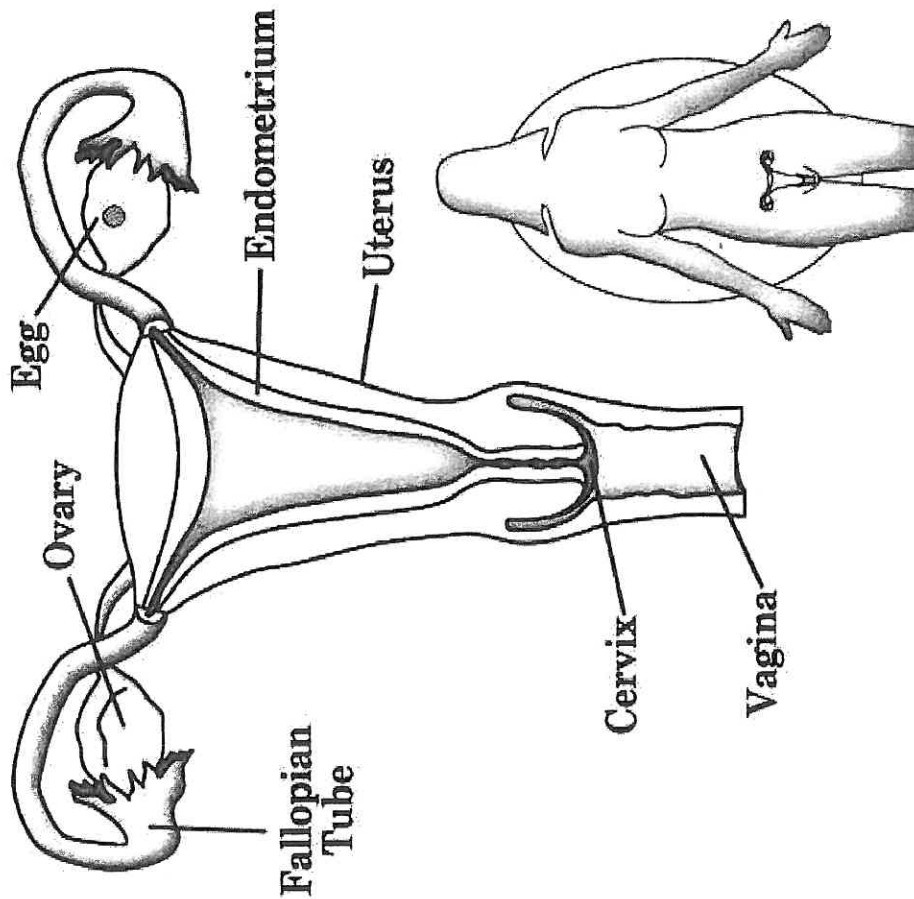
The egg then enters the \_\_\_\_\_. For a few days, the egg cell travels through this tube towards the \_\_\_\_\_, which is the strongest muscle in a female body. This is where the fetus grows if a female body is pregnant. The lining of this organ, called the \_\_\_\_\_, thickens in preparation for a fertilized egg. If the egg is not fertilized by the male \_\_\_\_\_, it will leave the body, along with the lining of the uterus and a small amount of blood. This process is called \_\_\_\_\_.

The \_\_\_\_\_ is located at the bottom of the uterus and has a tiny opening at its center. This opening dilates to approximately 10 centimeters, the size of a bagel during labor so that a baby can pass through during childbirth. This may also be a common site of cancer in female bodies, which a doctor can check for during a \_\_\_\_\_ test.

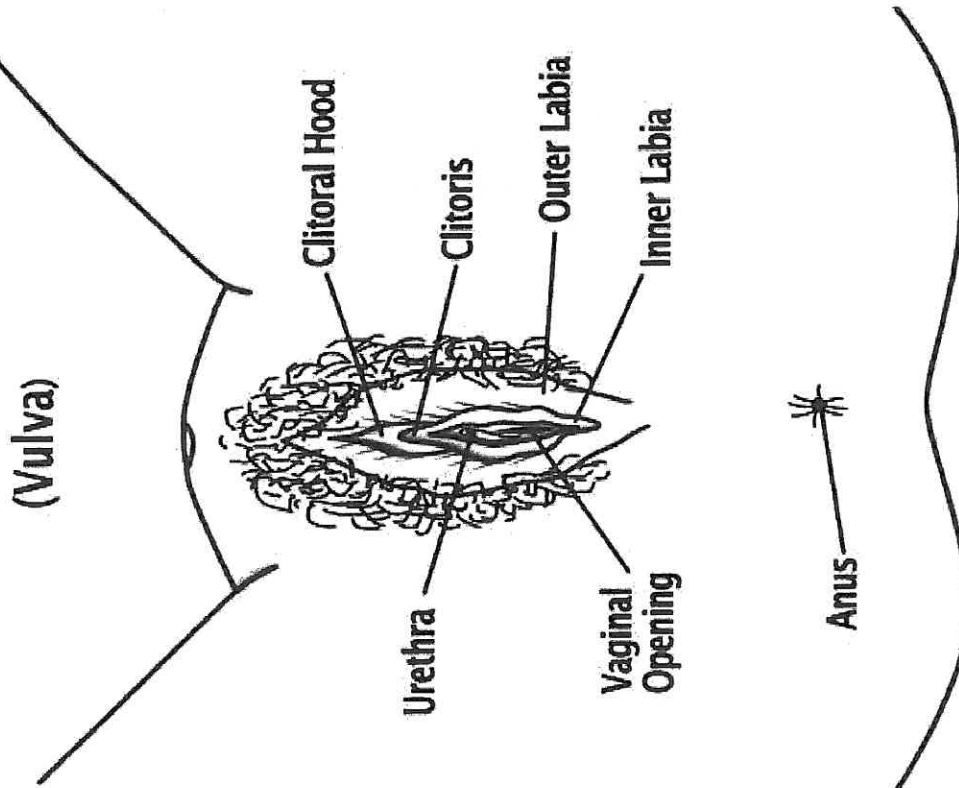
The \_\_\_\_\_ is the female sexual organ through which menstrual blood passes and is the canal that a baby travels down during birth. It secretes a natural lubrication called "vaginal fluid" through its walls when a female body is sexually aroused. Some female bodies have a thin fold of skin near the opening to the vagina, which is called the \_\_\_\_\_.

The entire outside of the female genitals is called the \_\_\_\_\_. There are folds of skin, which are part of this organ, that protect the opening from infection. The \_\_\_\_\_ are the outermost, and have pubic hair growing on them. The \_\_\_\_\_ are darker in color because they are made up of erectile tissue, which fills up with blood when a female body is sexually aroused. The inner labia come together to form a protective hood around the \_\_\_\_\_, which is a small bundle of nerve endings and erectile tissue that hardens and enlarges like the penis during arousal. This is the only organ in the human body that exists solely for the purpose of pleasure.

# INTERNAL FEMALE ANATOMY



# EXTERNAL FEMALE ANATOMY (Vulva)



Everyone's vulva is unique, so don't judge yours by the pictures you see

## THE FEMALE SEXUAL AND REPRODUCTIVE SYSTEM: WHAT'S THE STORY? – ANSWER KEY

Name \_\_\_\_\_ Period \_\_\_\_\_ Date \_\_\_\_\_

*Directions:* Using the terms provided, fill in the blanks to make this explanation of the female sexual and reproductive system correct. Each term can be used only once.

<b>cervix</b>	<b>Clitoris</b>	<b>fallopian tube</b>	<b>ovaries</b>
<b>sperm cell</b>	<b>Endometrium</b>	<b>outer labia</b>	<b>ovulation</b>
<b>uterus</b>	<b>Puberty</b>	<b>hymen</b>	<b>PAP</b>
<b>menstruation</b>	<b>Vagina</b>	<b>vulva</b>	<b>inner labia</b>

Many changes happen in female bodies during **puberty**. For example, about once a month, an egg is released from one of the almond-shaped organs known as the **ovaries**. This process is called **ovulation**.

The egg then enters the **fallopian tube**. For a few days, the egg cell travels through this tube towards the **uterus**, which is the strongest muscle in a female body. This is where the fetus grows if a female body is pregnant. The lining of this organ, called the **endometrium**, thickens in preparation for a fertilized egg. If the egg is not fertilized by a **sperm cell**, it will leave the body, along with the lining of the uterus and a small amount of blood. This process is called **menstruation**.

The **cervix** is located at the bottom of the uterus, and has a tiny opening at its center. This opening dilates to approximately 10 centimeters, the size of a bagel during labor so that a baby can pass through during childbirth. This may also be a common site of cancer in female bodies, which a doctor can check for during a **PAP** test.

The **vagina** is the female sexual organ through which menstrual blood passes and is the canal that a baby travels down during birth. It secretes a natural lubrication called “vaginal fluid” through its walls when a female body is sexually aroused. Some female bodies have a thin fold of skin near the opening to the vagina, which is called the **hymen**.

The entire outside of the female genitals is called the **vulva**. There are folds of skin, which are part of this organ, which protect the opening from infection. The **outer labia** are the outermost, and have pubic hair growing on them. The **inner labia** are darker in color because they are made up of erectile tissue, which fills up with blood when a female body is sexually aroused. The inner labia come together to form a protective hood around the **clitoris**, which is a small bundle of nerve endings and erectile tissue that hardens and enlarges like the penis during arousal. This is the only organ in the human body that exists solely for the purpose of pleasure.

## THE MALE SEXUAL AND REPRODUCTIVE SYSTEM: WHAT'S THE STORY?

Name \_\_\_\_\_ Period \_\_\_\_\_ Date \_\_\_\_\_

*Directions:* Using the terms provided, fill in the blanks to make this explanation of the male sexual and reproductive system correct. Each term can be used only once.

scrotum	erection	semen
vas deferens	penis	testicles
puberty	prostate gland	urethra
epididymis	ejaculation	foreskin
	sperm cells	pre-ejaculatory fluid

Many changes happen in male bodies during \_\_\_\_\_. For example, the two oval-shaped glands called the \_\_\_\_\_ start producing \_\_\_\_\_. These glands are held in a sac of skin called the \_\_\_\_\_, which regulates their temperature by holding them closer or farther from the body.

After the sperm cells are produced, they are stored in a large, coiled tube on the outer surface of each testicle called the \_\_\_\_\_, (also known as the “sperm high school”) where they remain until they become mature.

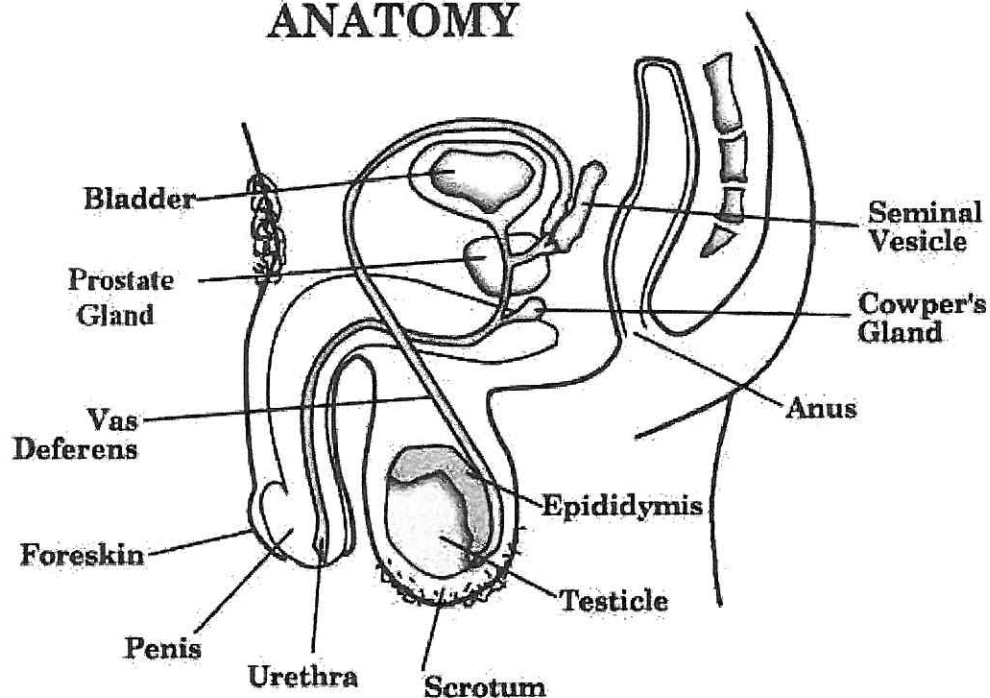
From this coiled tube, the mature sperm cells enter a larger tube called the \_\_\_\_\_, which acts as the “sperm highway.” The sperm travel through this tube and mix with fluid from the \_\_\_\_\_ which is a common site of cancer in males. The combination of the sperm cells plus this fluid is called \_\_\_\_\_. The fluid then leaves the body through a tube in the penis called the \_\_\_\_\_, which is the same tube urine passes through. When the fluid leaves the body, it is \_\_\_\_\_.

When a male body is sexually aroused, the spongy tissue in the \_\_\_\_\_ fills with blood. This is called an \_\_\_\_\_, and it typically happens before ejaculation.

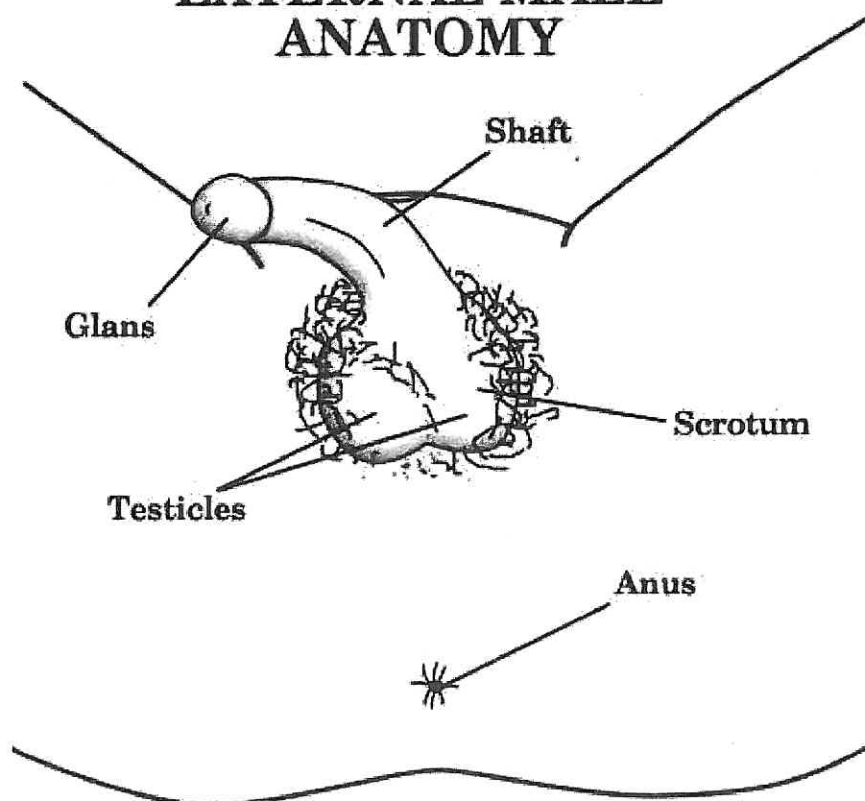
If a male body has not been circumcised, a piece of skin called the \_\_\_\_\_ covers the head of the penis. Uncircumcised males must remember to clean underneath it in the shower.

Because the urethra has two functions (urination and ejaculation), a male body releases a few drops of \_\_\_\_\_ to “clean out” the passageway of any urine traces during sexual arousal. This fluid can leak out of the penis before ejaculation and can contain thousands of sperm cells. It is recommended to always have the penis covered when near the vagina, anus, or mouth to prevent getting or spreading STIs and undesired pregnancy.

## INTERNAL MALE ANATOMY



## EXTERNAL MALE ANATOMY



No penis is the same. Don't compare yours with the pictures you see

## THE MALE SEXUAL AND REPRODUCTIVE SYSTEM: WHAT'S THE STORY? – ANSWER KEY

Name \_\_\_\_\_ Period \_\_\_\_\_ Date \_\_\_\_\_

*Directions:* Using the terms provided, fill in the blanks to make this explanation of the male sexual and reproductive system correct. Each term can be used only once.

<b>scrotum</b>	<b>erection</b>	<b>semen</b>
<b>vas deferens</b>	<b>penis</b>	<b>testicles</b>
<b>puberty</b>	<b>prostate gland</b>	<b>urethra</b>
<b>epididymis</b>	<b>ejaculation</b>	<b>foreskin</b>
	<b>sperm cells</b>	<b>pre-ejaculatory fluid</b>

Many changes happen in males bodies during **puberty**. For example, the two oval-shaped glands called the **testicles** start producing **sperm cells**. These glands are held in a sac of skin called the **scrotum**, which regulates their temperature by holding them closer or farther from the body.

After the sperm cells are produced, they are stored in a large, coiled tube on the outer surface of each testicle called the **epididymis**, (also known as the “sperm high school”) where they remain until they become mature.

From this coiled tube, the mature sperm cells enter a larger tube called the **vas deferens**, which acts as the “sperm highway.” The sperm travel through this tube and mix with fluid from the **prostate gland**, which is a common site of cancer in male bodies. The combination of the sperm cells plus this fluid is called **semen**. The fluid then leaves the body through a tube in the penis called the **urethra**, which is the same tube urine passes through. When the fluid leaves the body, it is called **ejaculation**.

When a male body is sexually aroused, the spongy tissue in the **penis** fills with blood. This is called an **erection**, and it typically happens before ejaculation.

If a male has not been circumcised, a piece of skin called the **foreskin** that covers the head of the penis. Uncircumcised male bodies must remember to clean underneath it in the shower.

Because the urethra has two functions (urination and ejaculation), a male body releases a few drops of **pre-ejaculatory fluid** to “clean out” the passageway of any urine traces during sexual arousal. This fluid can leak out of the penis before ejaculation and can contain thousands of sperm cells. It is recommended to always have the penis covered when near the vagina, anus, or mouth to prevent getting or spreading STIs and undesired pregnancy.