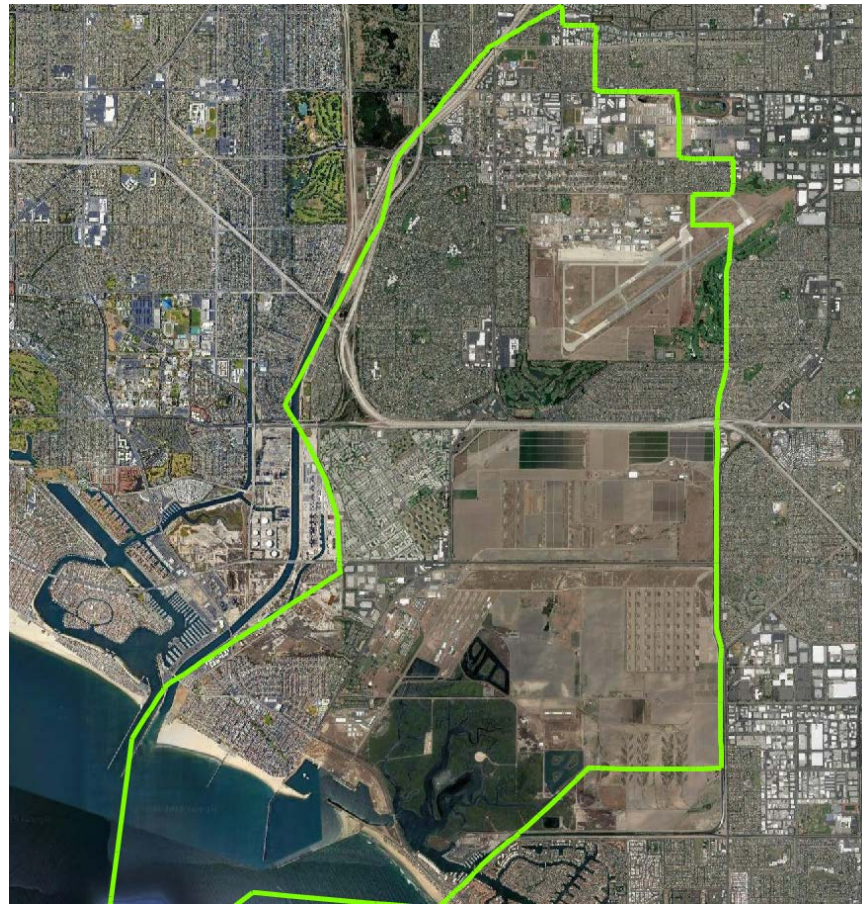




**Dr. Doug Johnson, President  
National Demographics Corporation**

**September 24, 2019**



# *Los Alamitos Unified School District Introduction to Districting*

Dr. Doug Johnson, President, National Demographics

1. **“At Large”**
2. **“From District” or “Residence” Districts**
3. **“By District”**

**The California Voting Rights Act was written to specifically require by-district elections.**

- Under the Federal Voting Rights Act (passed in 1965), a jurisdiction must fail 4 factual tests before it is in violation of the law.
- The California VRA makes it significantly easier for plaintiffs to force jurisdictions into “by-district” election systems by eliminating two of the US Supreme Court *Gingles* tests:
  - ~~1. Can the protected class constitute the majority of a district?~~
  2. Does the protected class vote as a bloc?
  3. Do the voters who are not in the protected class vote in a bloc to defeat the preferred candidates of the protected class?
  - ~~4. Do the “totality of circumstances” indicate race is a factor in elections?~~
- Liability is now determined only by the presence of racially polarized voting

## □ Switched (or in the process of switching) as a result of CVRA:

### □ At least 175 school districts, including:

- Westminster Elementary
- Placentia-Yorba Linda USD
- Cypress Elementary
- Magnolia Elementary
- Fullerton Elementary
- Fullerton JUHSD
- Irvine USD
- Lowell Elementary
- Newport-Mesa USD
- Anaheim City Elementary
- Anaheim High
- Tustin USD
- Los Alamitos USD
- Huntington City Elementary

## □ Palmdale, Santa Clara and Santa Monica fought “on the merits.” All lost.

- Santa Monica and Santa Clara are appealing.
- Palmdale spent about \$1.8 million, Santa Clara about \$800,000, and Santa Monica between \$5 and \$8 million, just on their defense.
- No jurisdiction has won a case.

## □ Key settlements:

- Palmdale: \$4.7 million
- Santa Clara: \$3.16 million
- Modesto: \$3 million
- Highland: \$1.3 million
- Anaheim: \$1.1 million
- Whittier: \$1 million
- Santa Barbara: \$600,000
- Tulare Hospital: \$500,000
- Madera Unified: about \$170,000
- Hanford Joint Union Schools: \$118,000
- Merced City: \$42,000

# Districting Process

Step	Description
<b>Two Initial Hearings</b> September 24 & October 14	<b>Held prior to release of draft maps.</b> <b>Education and to solicit input on the communities in the District.</b> Hearings must be within 30 days of each other
<b>Release draft maps</b>	<b>Maps must be posted at least 7 days prior to 3<sup>rd</sup> hearing.</b>
<b>Two Hearings on Draft Maps</b> November 12 & December 10	<b>Two meetings to discuss and revise the draft maps and to discuss the election sequencing.</b> Hearings must be within 45 days of each other
<b>Final Hearing &amp; Map Adoption</b>	<b>Map must be posted 7 days prior to adoption.</b>
<b>Approval</b>	<b>Orange County Committee on School District Organization will conduct a hearing in the district on the adopted map</b>
<b>2020</b>	<b>First by-district elections in trustee areas</b>
<b>2021</b>	<b>Map adjusted using 2020 Census data</b>
<b>2022</b>	<b>Remaining trustee areas hold first by-district elections</b>

## Federal Laws

- Equal Population
- Federal Voting Rights Act
- No Racial Gerrymandering

## Traditional Redistricting Principles

- Communities of interest
- Compact
- Contiguous
- Visible (Natural & man-made) boundaries
- Respect voters' choices / continuity in office
- *Planned future growth/growth since 2010*





# Demographic Summary

**Each of the 5 Trustee Areas must have approximately 9,600 residents**

**Latinos make up 13% of eligible voters and Asians make up 11%**

**The additional socio-economic data can be used, by those interested, to assist in identifying “communities of interest.”**

Category	Field	Count	Pct	Category	Field	Count	Pct
	Total Pop	47,947		ACS Pop. Est.	Total	49,272	
Total Pop	Hisp	6,330	13%	Age	age0-19	9,875	20%
	NH White	34,280	71%		age20-60	22,421	46%
	NH Black	780	2%		age60plus	16,977	34%
	Asian-American	5,688	12%	Immigration	immigrants	6,876	14%
Total	38,613		naturalized		4,891	71%	
Citizen Voting Age Pop	Hisp	4,880	13%	Language spoken at home	english	38,794	82%
	NH White	28,280	73%		spanish	2,825	6%
	NH Black	838	2%		asian-lang	3,502	7%
	Asian/Pac.Isl.	3,963	11%		other lang	2,046	4%
Voter Registration (Nov 2016)	Total	32,838		Language Fluency	Speaks Eng. "Less than Very Well"	3,043	6%
	Latino est.	3,390	10%	Education (among those age 25+)	hs-grad	17,283	46%
	Spanish-Surnamed	3,045	9%		bachelor	10,810	29%
	Asian-Surnamed	2,205	7%		graduatedegree	7,126	19%
	Filipino-Surnamed	312	1%	Child in Household	child-under18	4,493	21%
	NH White est.	24,985	76%	Pct of Pop. Age 16+	employed	21,609	52%
NH Black	618	2%	Household Income		income 0-25k	3,680	17%
Total	27,822			income 25-50k	3,792	18%	
Voter Turnout (Nov 2016)	Latino est.	2,787		10%	income 50-75k	3,032	14%
	Spanish-Surnamed	2,503		9%	income 75-200k	7,896	37%
	Asian-Surnamed	1,727		6%	income 200k-plus	2,723	13%
	Filipino-Surnamed	256	1%	Housing Stats	single family	13,955	62%
	NH White est.	21,394	77%		multi-family	8,713	38%
	NH Black	506	2%		rented	6,080	29%
Total	17,432		owned		15,042	71%	
Voter Turnout (Nov 2014)	Latino est.	1,282	7%				
	Spanish-Surnamed	1,152	7%				
	Asian-Surnamed	934	5%				
	Filipino-Surnamed	105	1%				
	NH White est.	14,270	82%				
NH Black est.	97	1%					

Total population data from the 2010 Decennial Census.

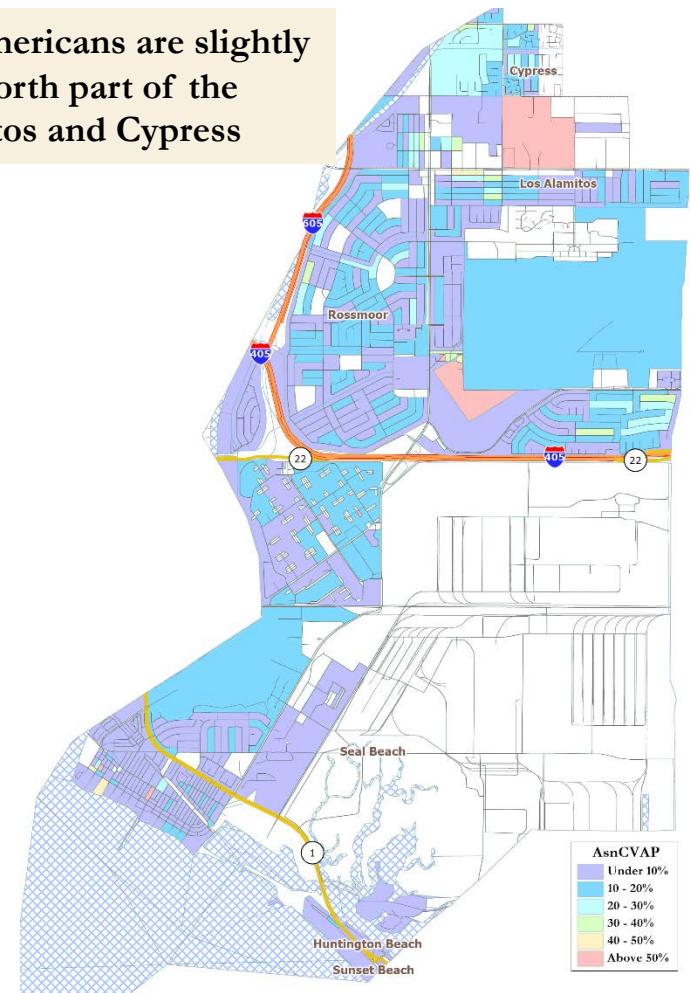
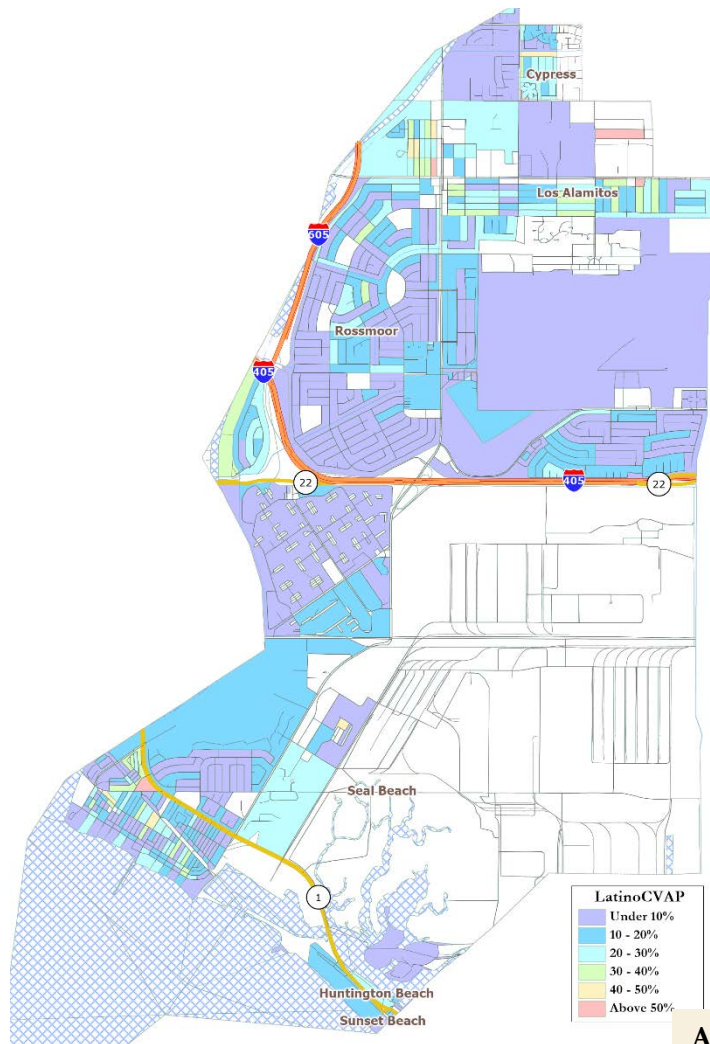
Surname-based Voter Registration and Turnout data from the California Statewide Database.

Latino voter registration and turnout data are Spanish-surname counts adjusted using Census Population Department undercount estimates. NH White and NH Black registration and turnout counts estimated by NDC. Citizen Voting Age Pop., Age, Immigration, and other demographics from the 2012-2016 American Community Survey and Special Tabulation 5-year data.



# Latino & Asian CVAP Concentrations

Latinos and Asian-Americans are slightly concentrated in the north part of the district, in Los Alamitos and Cypress



African-Americans and Native Americans do not have geographic concentrations large enough to significantly swing the demographics of a trustee area.

# Defining Communities of Interest

10

## 1<sup>st</sup> Question: what is your neighborhood or community of interest?

**A Community of Interest is generally defined as a neighborhood or community of shared interests, views, problems, or characteristics.**

Possible community feature/boundary definitions include:

- ❑ School attendance areas
- ❑ Natural neighborhood dividing lines, such as highway or major roads, rivers, canals, and/or hills
- ❑ Areas around parks and other neighborhood landmarks
- ❑ Common issues, neighborhood activities, or legislative/election concerns
- ❑ Shared demographic characteristics
  - ▣ Such as similar levels of income, education, or linguistic isolation

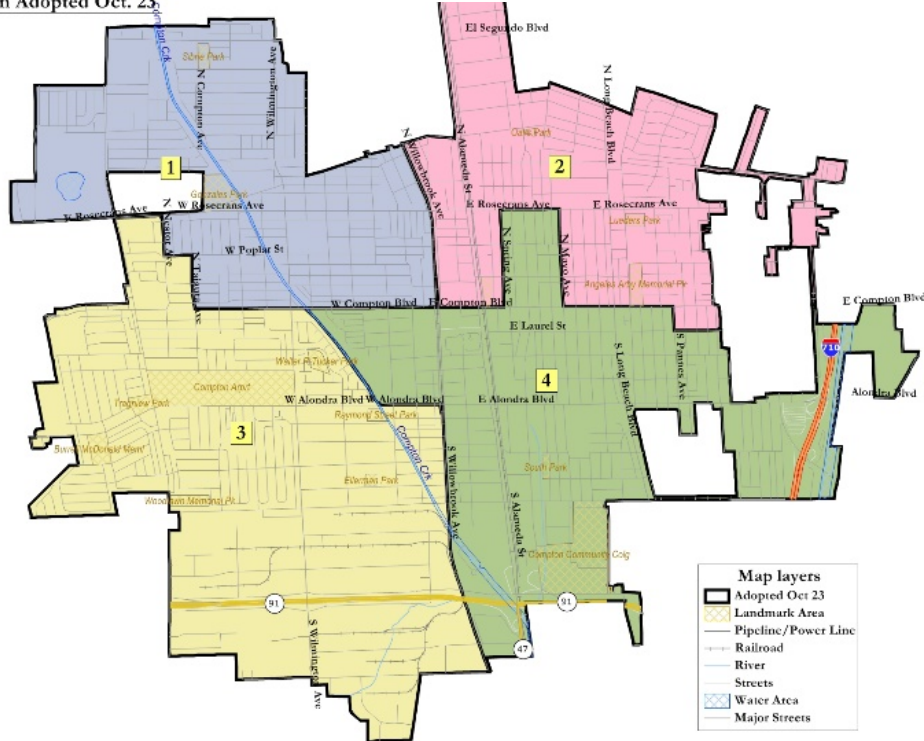
**2<sup>nd</sup> Question: Does a Community of Interest want to be united in one district, or to be divided to have a voice in multiple elections?**



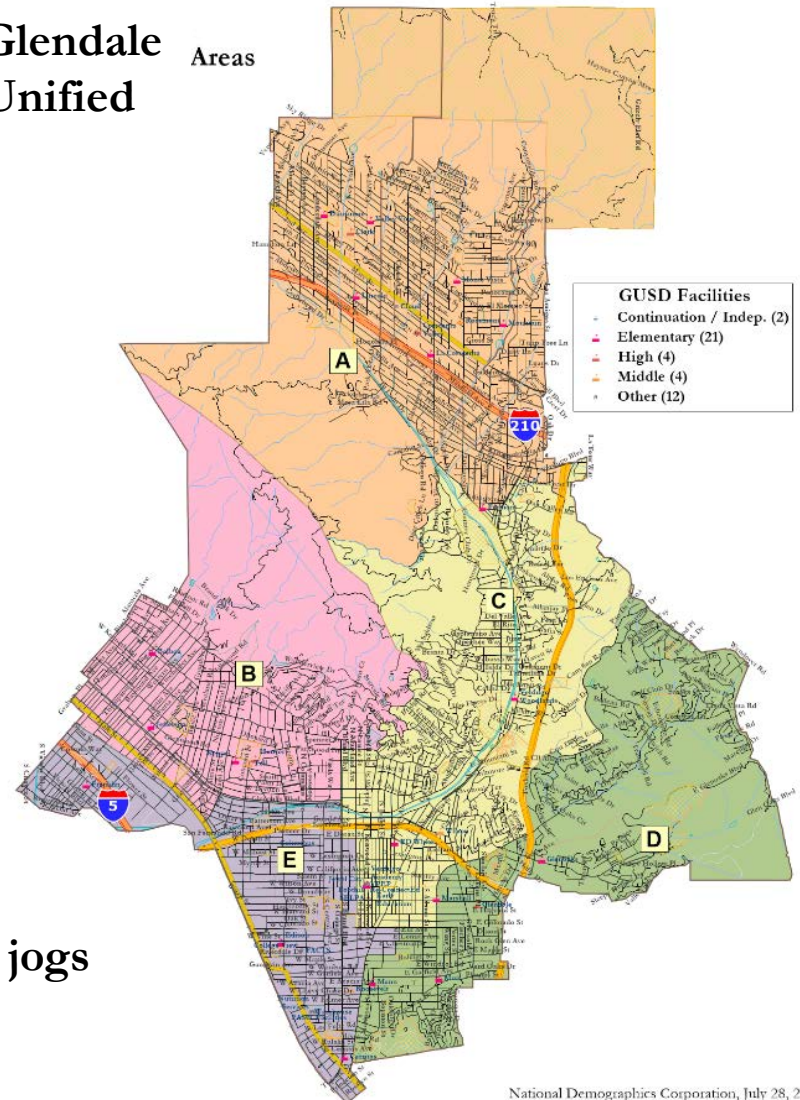
# Sample Compact Maps

City of Compton  
2012 Redistricting  
Plan Adopted Oct. 23

## Compton



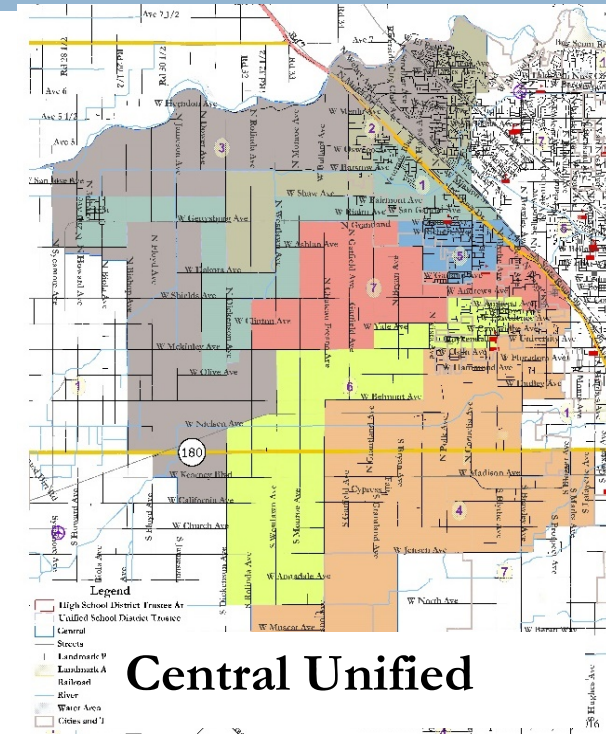
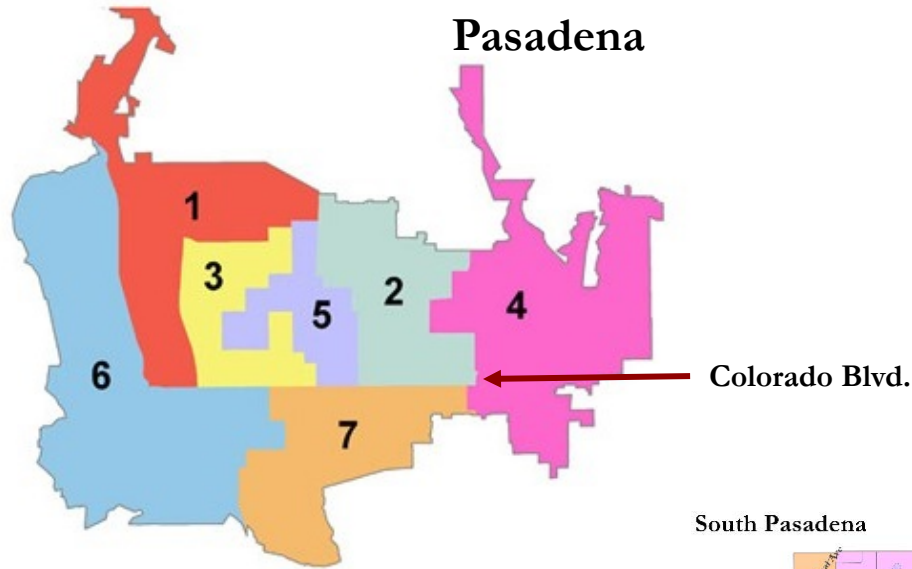
## Glendale Unified Areas



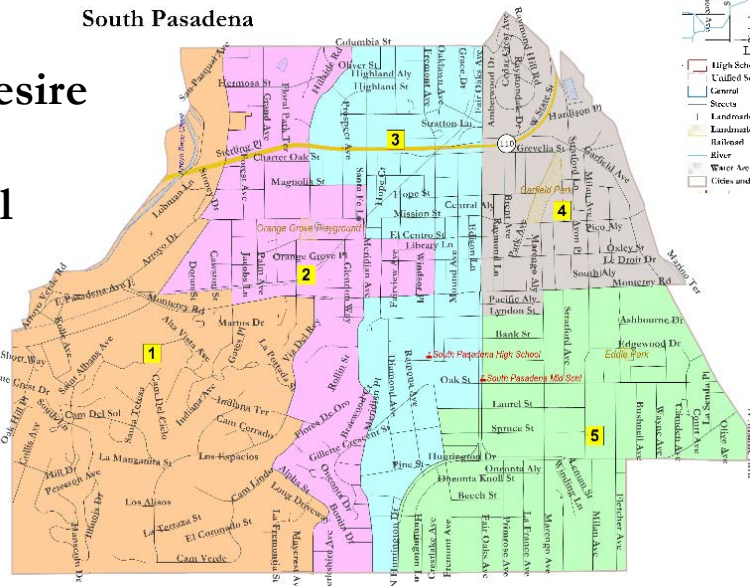
Examples of highly compact maps, with nooks and jogs driven only by equal population requirements.



# Sample Multiple-Representative Maps



Examples of maps where a desire to have all members touch downtown (Pasadena) or rural areas (Central), or as many neighborhoods as possible (South Pasadena), led to policy-driven but non-compact maps.



# Public Hearing & Discussion

13

1. What is your neighborhood or “community of interest”?
2. Do you prefer your neighborhood be kept together in one trustee area or have multiple representatives?
3. What are other communities of interest in the District that should be considered when drafting maps?

