

# Meservey

4210 E. 45<sup>th</sup> Street

Kansas City, Missouri 64130

## Historical Brief

**Architect:**

Charles A. Smith

**Architectural Style:**

Classical Elements

**Year Built:**

1928-1934-1956

**Designation:**

None

## Site Overview

**Acreage:**

3.8 acres

**Square Footage:**

64,900 square feet

**Number of Floors:**

4 floors

**Neighborhood:**

Vineyard

**Zoning:**

R-2.5

**Deed Restrictions:**

TBA

## Site Details

Closed in 2009

Capacity for 358 students

Partial A/C

2 low pressure steam boilers

Aluminum with plexiglass windows

Auditorium

Gymnasium

Cafeteria

Elevator

## Cost Management

**Utility Costs (as an Open Facility):**

\$6,500/month



## Reuse Assessment

**Condition Rating:** 4 out of 5



**Historic Rating:** 4 out of 5



**Reuse Potential Rating:**

**Med/High**

- Education (Public, Elementary)

**Low**

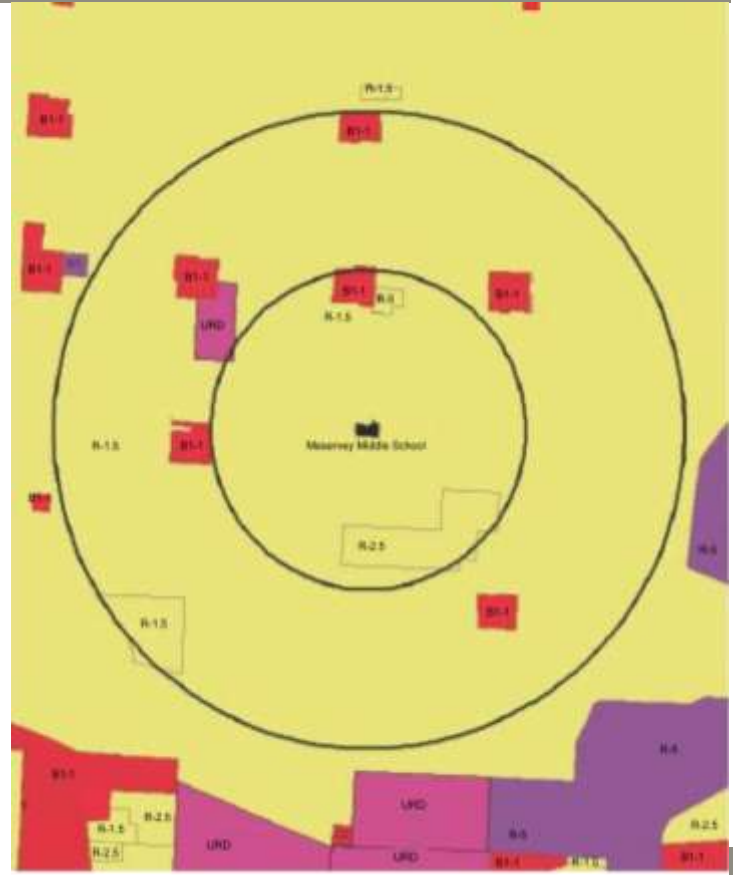
- Residential
- Commercial
- Demolition

**Complimentary/Secondary Uses**

- Community (Garden, Farmers market, Meeting facility)
- Religious



Current Land Use Map

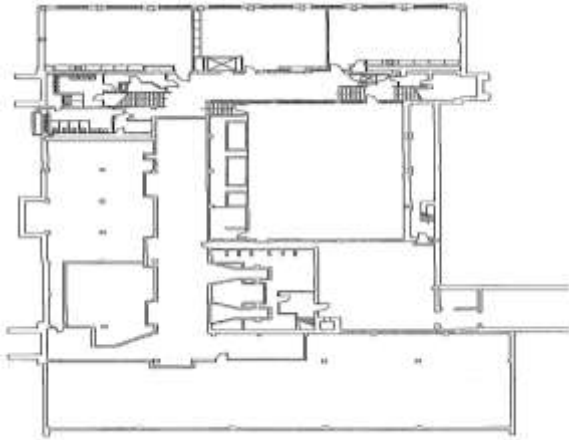


Zoning Map

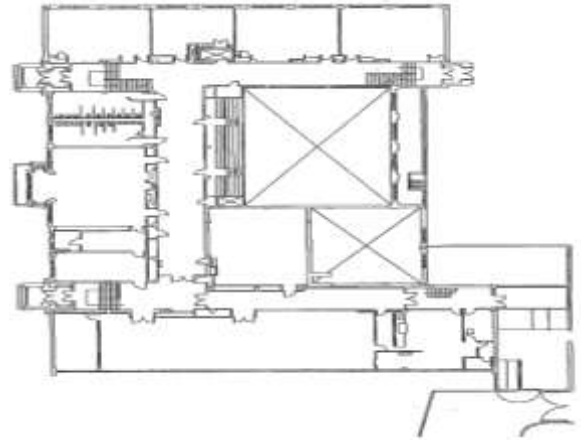
Aerial View: Meservey



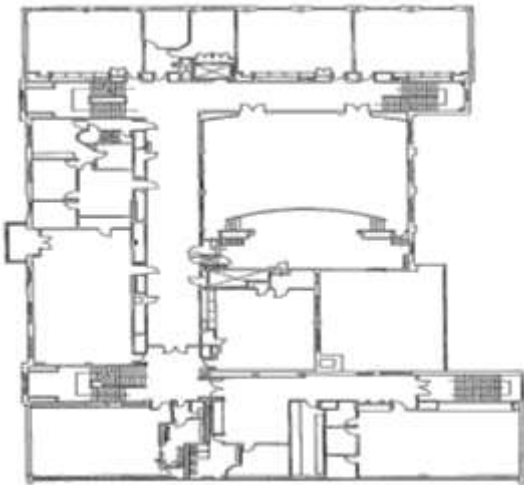
# Floor Plans:



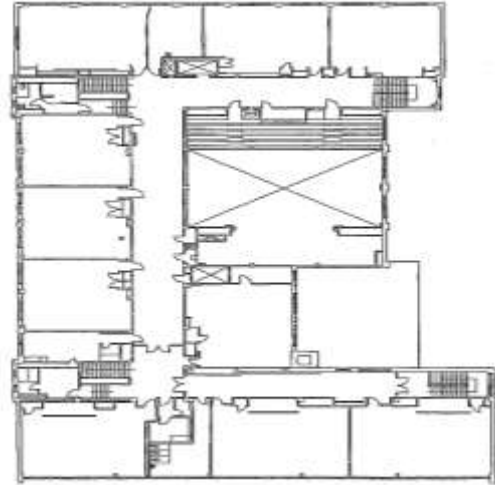
Ground Floor



First Floor



Second Floor



Third Floor



## Final Recommendations & Community Priorities

4210 E. 45<sup>th</sup> Street

Kansas City, Missouri 64130



Interior Photograph



Interior Photograph



Exterior Photograph