

Moore

4510 Linwood Boulevard

Kansas City, Missouri 64128

Historical Brief

Architect:

Charles A. Smith

Architectural Style:

Mission Revival

Year Built:

1915-1924-1994

Designation:

Eligible

Site Overview

Acreage:

3.62 acres

Square Footage:

43,340 square feet

Number of Floors

4 floors

Neighborhood:

Knoches Park/Seven Oaks

Zoning:

B3-2/R-5/R-1.5

Deed Restrictions:

TBD



Site Details

Closed in 2010

18 classrooms/375 seats

Partial A/C

Auditorium

Cafeteria

Gymnasium

Elevator

Cost Management

Utility Costs (as an Open Facility):

\$6,000/month

Draft Reuse Assessment

Condition Rating: 4 out of 5



Historic Rating: 3 out of 5



Reuse Potential Rating:

Med/High

- Multi-family residential
- Mixed-use
 - Residential + community services
 - Residential + office, etc.

Med/Low

- Education

Low

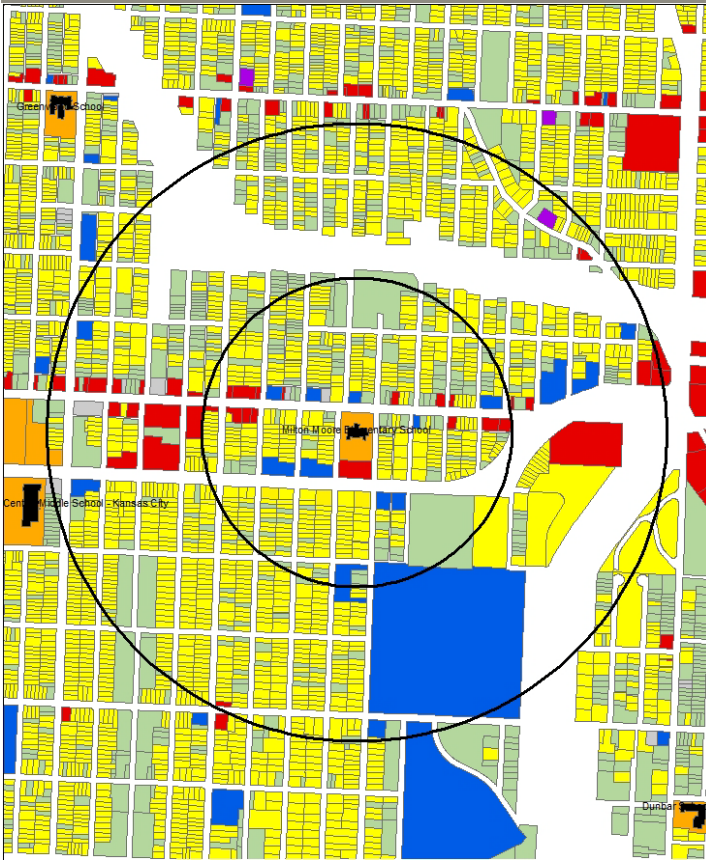
- Retail/commercial uses

Complimentary Uses

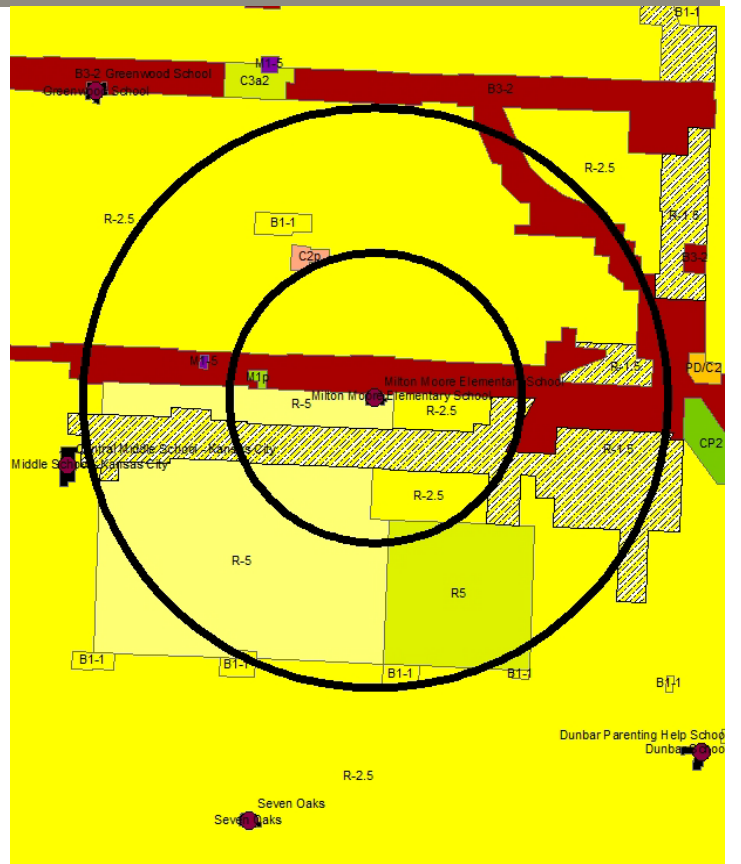
- Community use of grounds
 - Recreation
 - Community garden

4510 Linwood Boulevard

Kansas City, Missouri 64128



Current Land Use Map



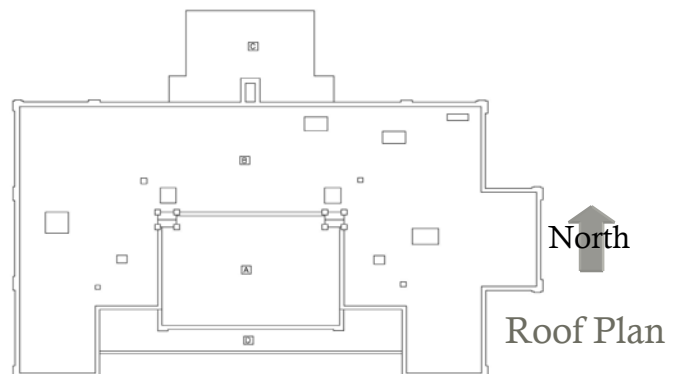
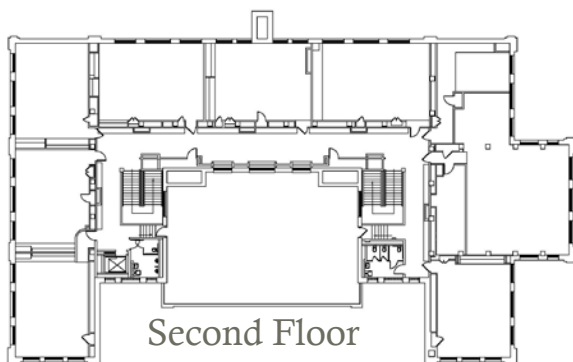
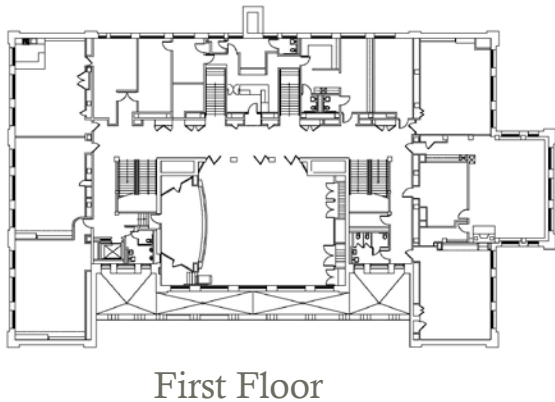
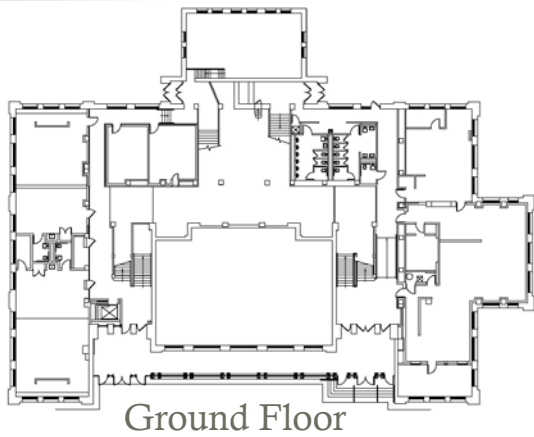
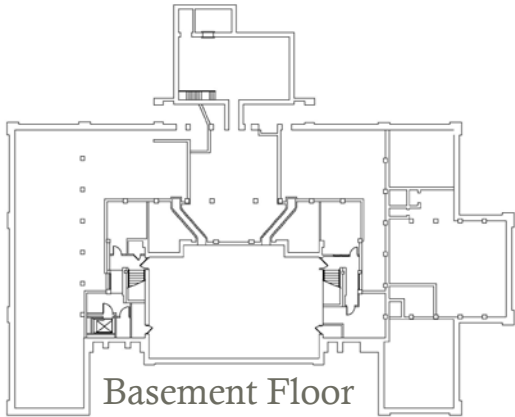
Zoning Map

Aerial View: Moore



Floor Plans:

Final Recommendations & Community Priorities





Exterior Photograph



Interior Photograph



Exterior Photograph