

Marlborough

1300 East 75th Street

Kansas City, Missouri 64131

Historical Brief

Architect:

Charles A. Smith

Architectural Style:

Romanesque elements

Year Built:

1927-1938-1952

Designation:

Eligible

Site Overview

Acreage:

3.7 acres

Square Footage:

44,400 square feet

Number of Floors:

3 floors

Neighborhood:

Marlborough

Zoning:

R-5

Deed Restrictions:

TBD



Site Details

Closed in 2007

Partial A/C

Steam heat boilers

Auditorium

Gymnasium

Cafeteria

2 blocks from Troost Max

No elevator

Roof leaks/water damage

Cost Management

Utility Costs (as an Open Facility):

\$5,450/month

Appraisal/Fair Market Value:

\$500,000 (2008)

Draft Reuse Assessment

Condition Rating: 2 ½ out of 5



Historic Rating: 4 out of 5



Reuse Potential Rating:

Med

- Mixed Use/Multi-tenant
- Residential
- Community Use
- Education

Low

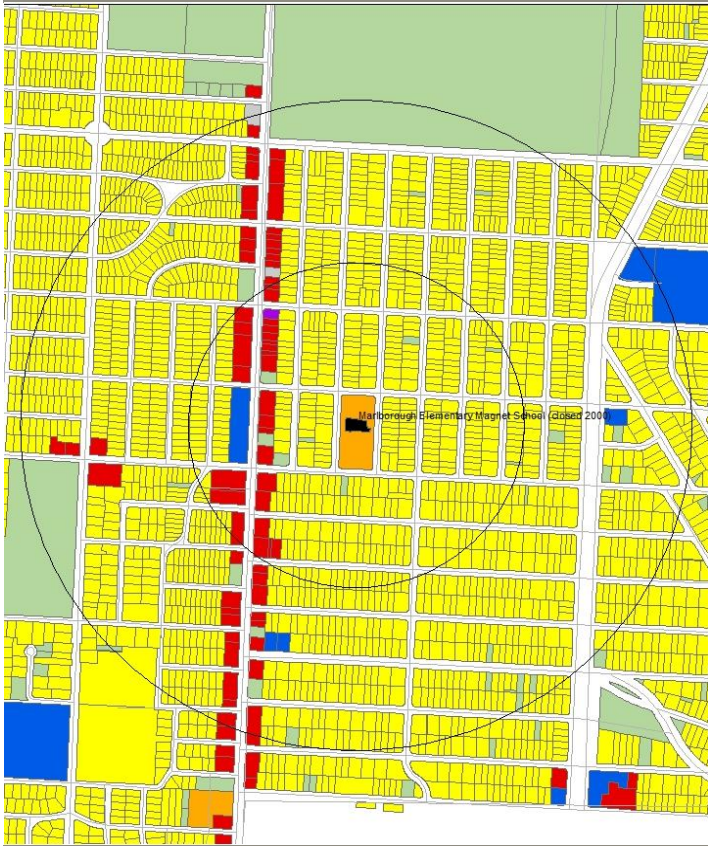
- Commercial

Complimentary Use

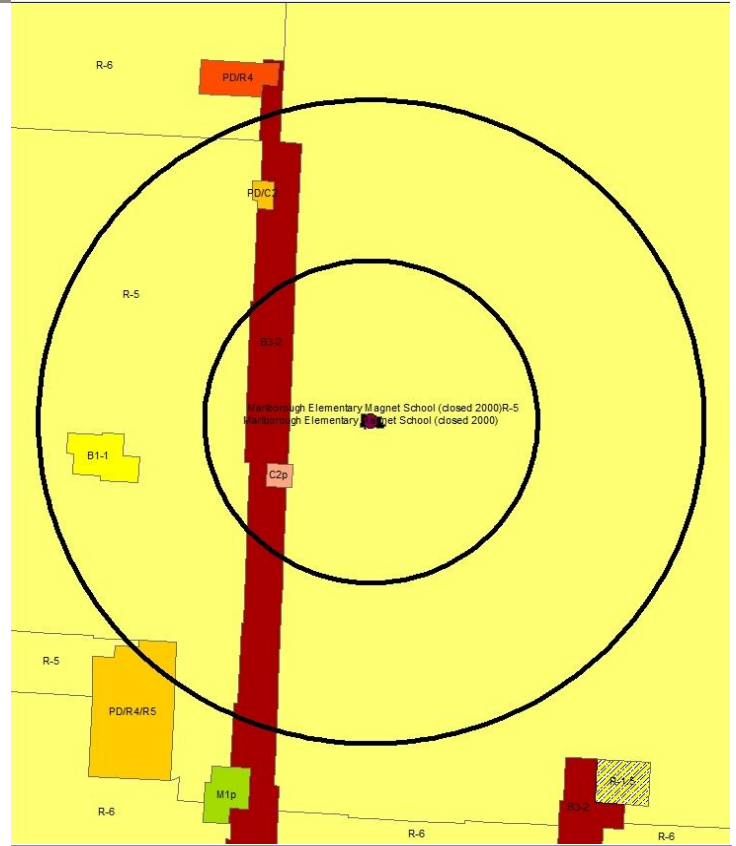
- Farmers' Market/Community Garden

1300 East 75th Street

Kansas City, Missouri 64131



Current Land Use Map



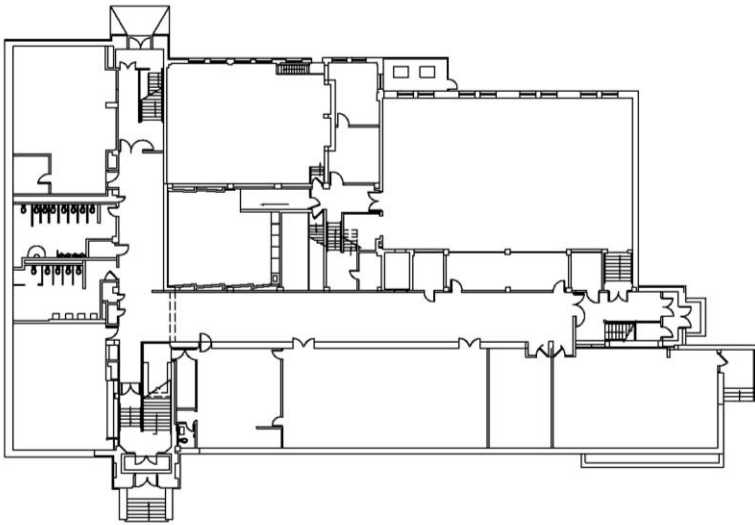
Zoning Map

Aerial View: Marlborough

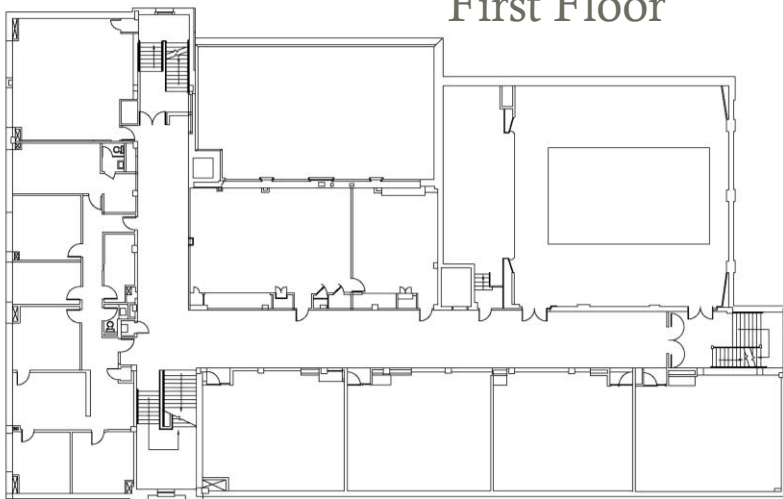


Floor Plans: Ground Floor

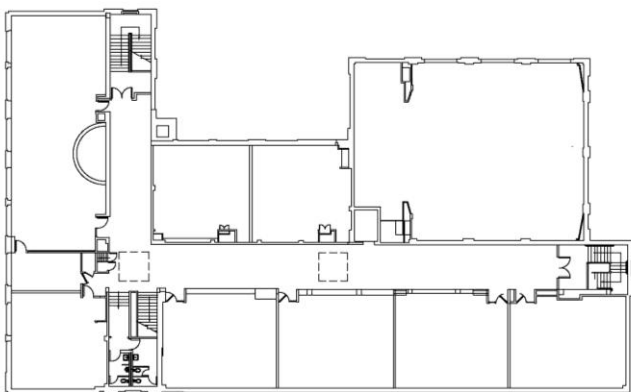
Final Recommendations & Community Priorities



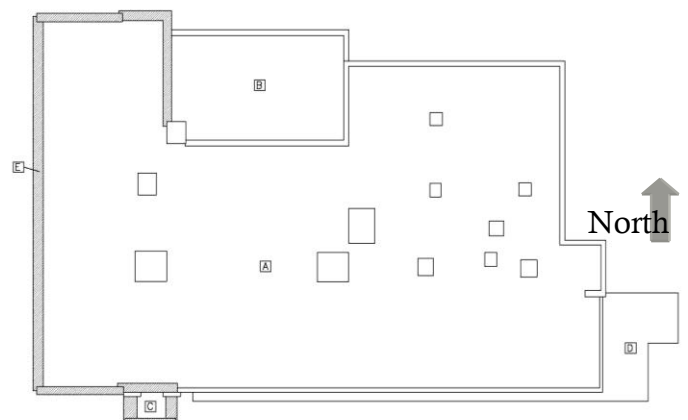
First Floor



Second Floor



Roof Plan



1300 East 75th Street

Kansas City, Missouri 64131



Exterior Photograph



Interior Photograph



Exterior Photograph