

Graceland

2803 E. 51st Street

Kansas City, Missouri 64130

Historical Brief

Architect:

Charles A. Smith

Architectural Style:

Tapestry Brick

Year Built:

1926-1954-1956-1966-1995

Designation:

Eligible

Site Overview

Acreage:

3.86 acres

Square Footage:

44,330 square feet

Number of Floors:

4 floors

Neighborhood:

Town Fork Creek

Zoning:

R-2.5

Deed Restrictions:

TBD

Site Details

Closed in 2005

Partial A/C

2 steam boilers

Combined auditorium/gymnasium

Cafeteria

Elevator

Located in Green Impact Zone

Cost Management

Utility Costs (as an Open Facility):

\$5,200/month



Reuse Assessment

Condition Rating: 3 out of 5



Historic Rating: 4 out of 5



Reuse Potential Rating:

High

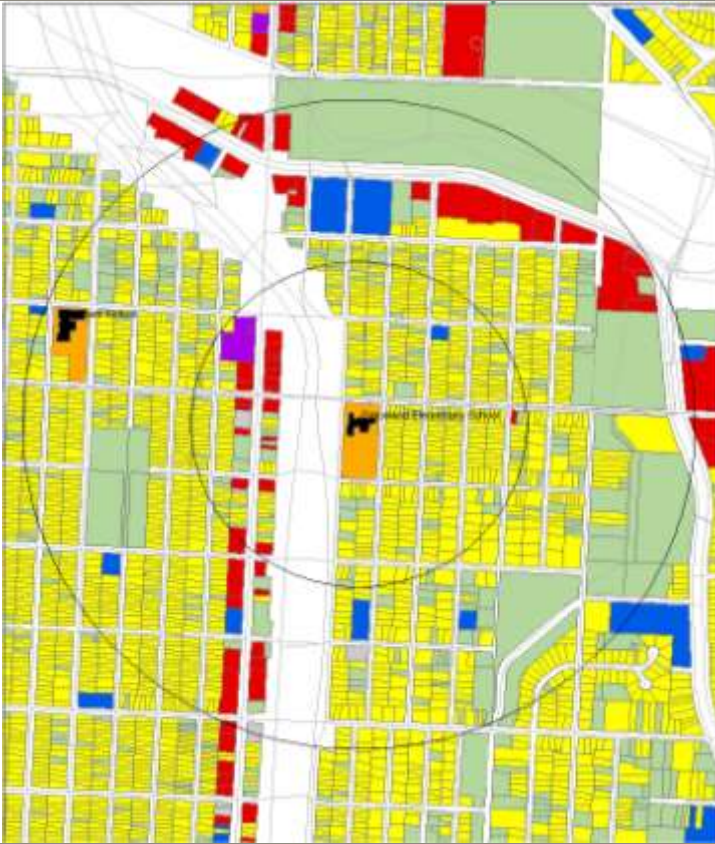
- Education
- Community/Social Services

Med

- Multi-tenant

Low

- Commercial
- Residential



Current Land Use Map

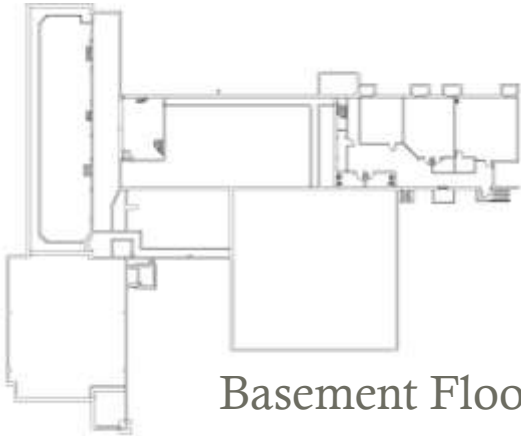


Zoning Map

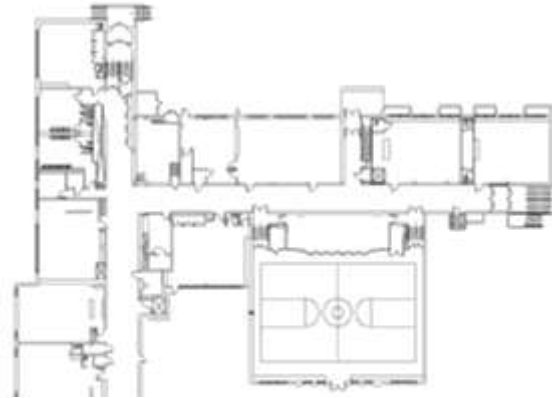
Aerial View: Graceland



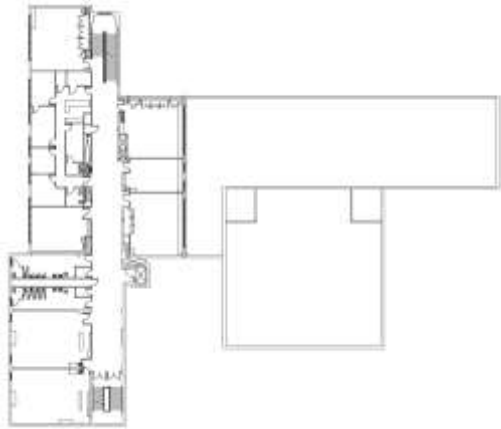
Floor Plans:



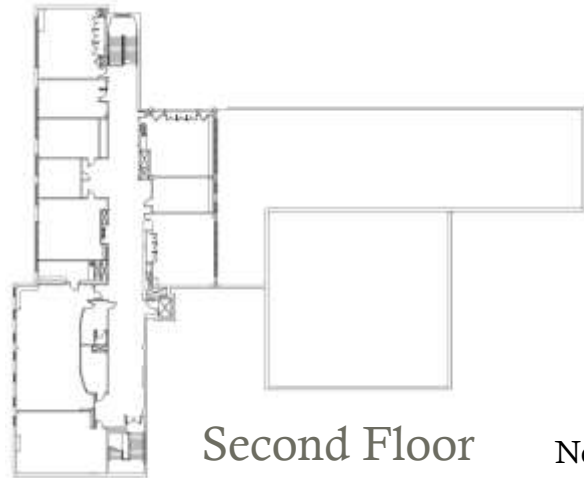
Basement Floor



Ground Floor



First Floor



Second Floor



Final Recommendations & Community Priorities



Roof Plan



Interior Photograph



Interior Photograph



Interior Photograph