

Fairview

3850 Pittman Road

Kansas City, Missouri 64133

Historical Brief

Architect:

J.W. Radotinsky

Architectural Style:

Modern

Year Built:

1957-1986-1993

Designation:

None

Site Overview

Acreage:

15 acres

Square Footage:

29,405 square feet

Number of Floors:

2 floors

Neighborhood:

Ashland Ridge

Zoning:

R-7.5

Deed Restrictions:

TBD



Site Details

Closed in 2010

Capacity for 200 students

Partial A/C

Gymnasium

Cafeteria

Elevator

Cost Management

Utility Costs (as an Open Facility):

\$3,500/month

Market Assessment

Appraisal/Fair Market Value:

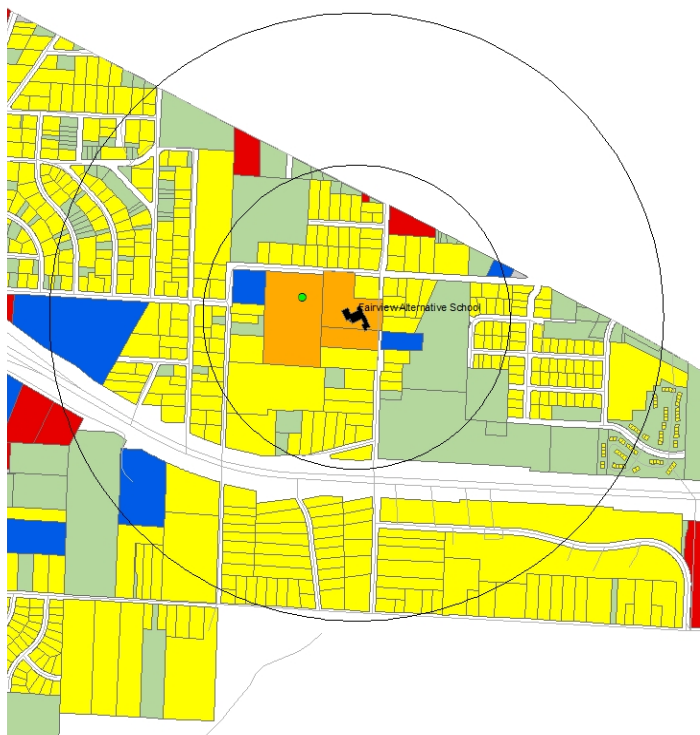
Market Rating:

Market Potential:

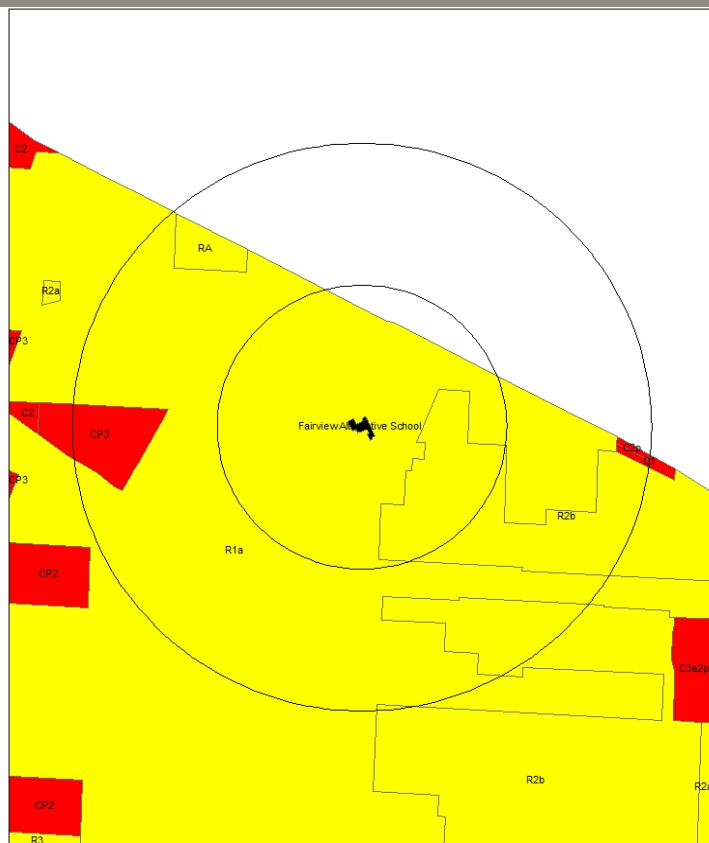
Building Assessment

Condition Rating:

Reuse Potential:

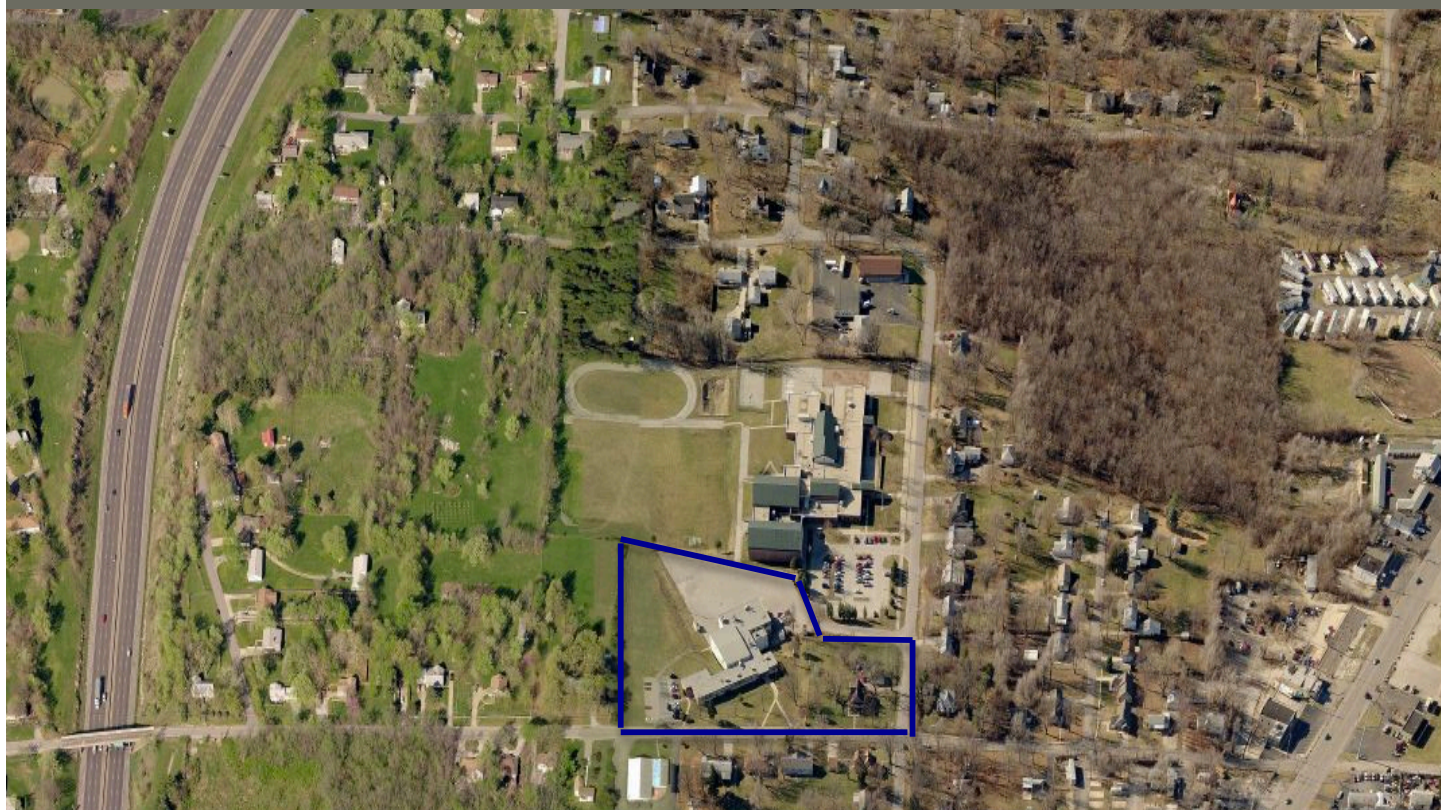


Current Land Use Map



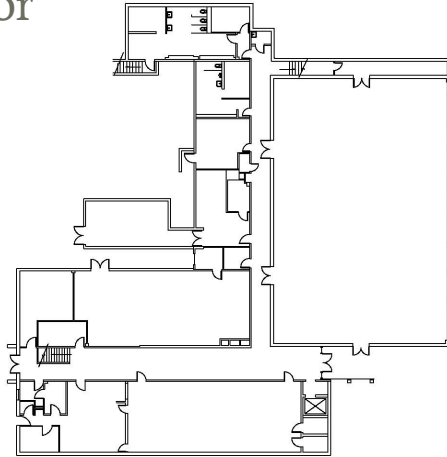
Zoning Map

Aerial View: Fairview

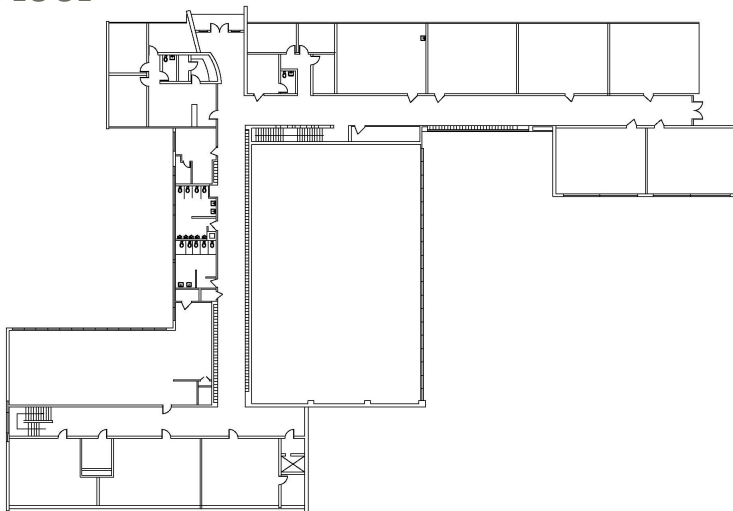


Floor Plans:

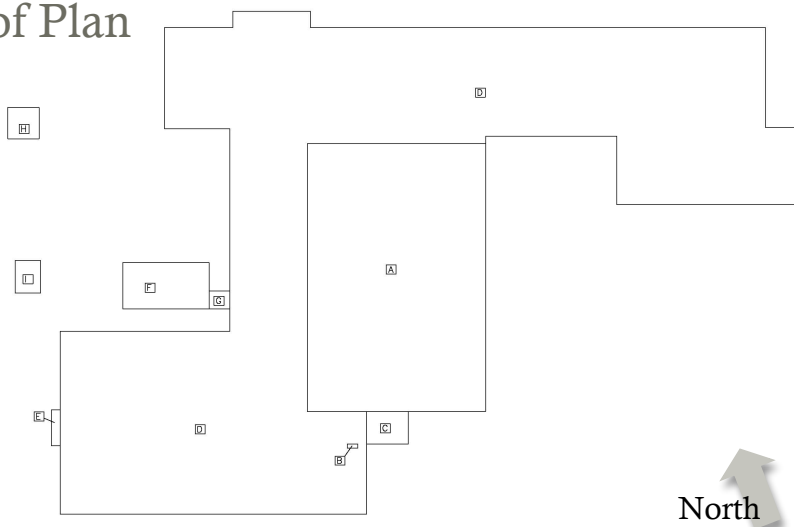
Ground Floor



First Floor



Roof Plan



North

Final Recommendations & Community Priorities

3850 Pittman Road

Kansas City, Missouri 64133



Exterior Photograph



Interior Photograph



Interior Photograph