

# Chick

4101 E. 53<sup>rd</sup> Street

Kansas City, Missouri 64130

## Historical Brief

**Architect:**

Charles A. Smith

**Architectural Style:**

Art Deco

**Year Built:**

1931-1954-1997

**Designation:**

Eligible

## Site Overview

**Acreage:**

3.92 acres

**Square Footage:**

45,760 square feet

**Number of Floors:**

4 floors

**Neighborhood:**

Swope Parkway/Elmwood

**Zoning:**

R-2.5

**Deed Restrictions:**

TBD



## Site Details

Closed in 2009

17 classrooms / 308 seats

Partial A/C

2 low pressure steam boilers

Gymnasium

Cafeteria

## Cost Management

**Utility Costs (as an Open Facility):**

\$6,150/month avg. (FY01-09)

## Draft Reuse Assessment

**Condition Rating:** 3 ½ out of 5



**Historic Rating:** 3 out of 5



**Reuse Potential Rating:**

**High**

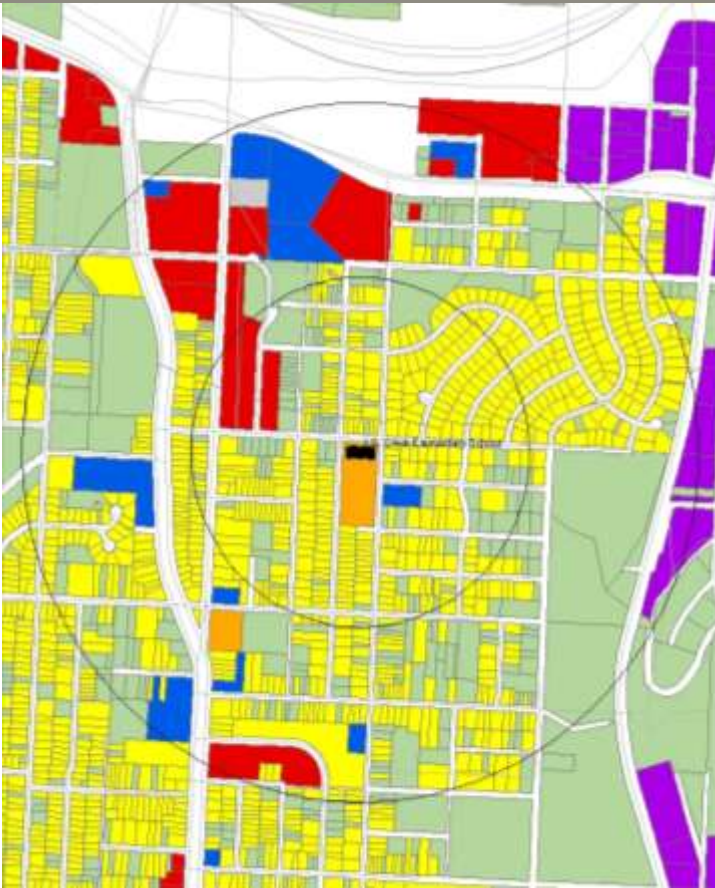
- Education

**Med**

- Residential
- Community/Social Services
- Mixed Use

**Low**

- Commercial



Current Land Use Map



Zoning Map

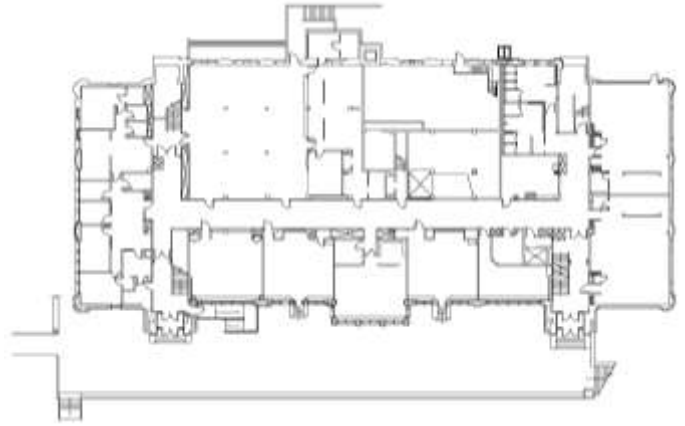
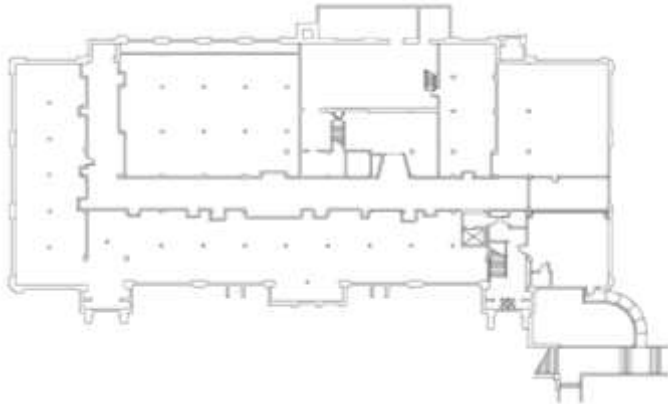
Aerial View: Chick



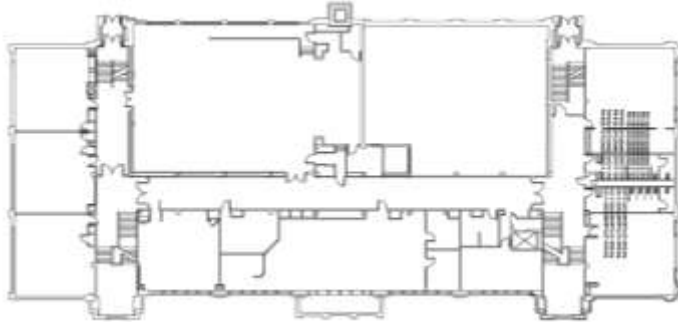
# Floor Plans:

## Ground Floor

### Basement Floor



### First Floor



### Second Floor



## Final Recommendations & Community Priorities



Exterior Photograph



Interior Photograph



Interior Photograph