

Bryant

319 Westover Road

Kansas City, Missouri 64113

Historical Brief

Architect:

Smith, Rea & Lovitt

Architectural Style:

Jacobethan Elements

Year Built:

1915-1920-1938-1992

Designation:

Eligible

Site Overview

Acreage:

4.15 acres

Square Footage:

45,760 square feet

Number of Floors:

4 floors

Neighborhood:

Country Side

Zoning:

R-6

Deed Restrictions:

TBD



Site Details

Closed in 2009

17 classrooms/ 383 seat

capacity

Partial A/C

Low pressure steam boiler

Aluminum windows with

plexiglass, not insulated

Auditorium

Gymnasium

Cafeteria

Cost Management

Utility Costs (as an Open Facility):

\$6,700/month

Draft Reuse Assessment

Condition Rating: 3 ½ out of 5



Historic Rating: 4 out of 5



Reuse Potential Rating:

High

- Residential
- Community Use

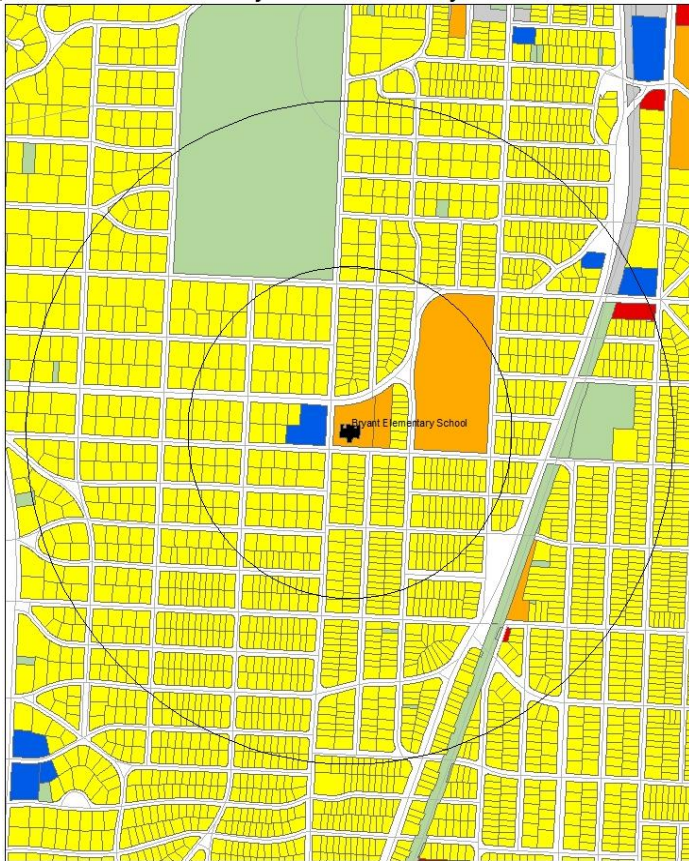
Med

- Mixed Use
- Education

Low

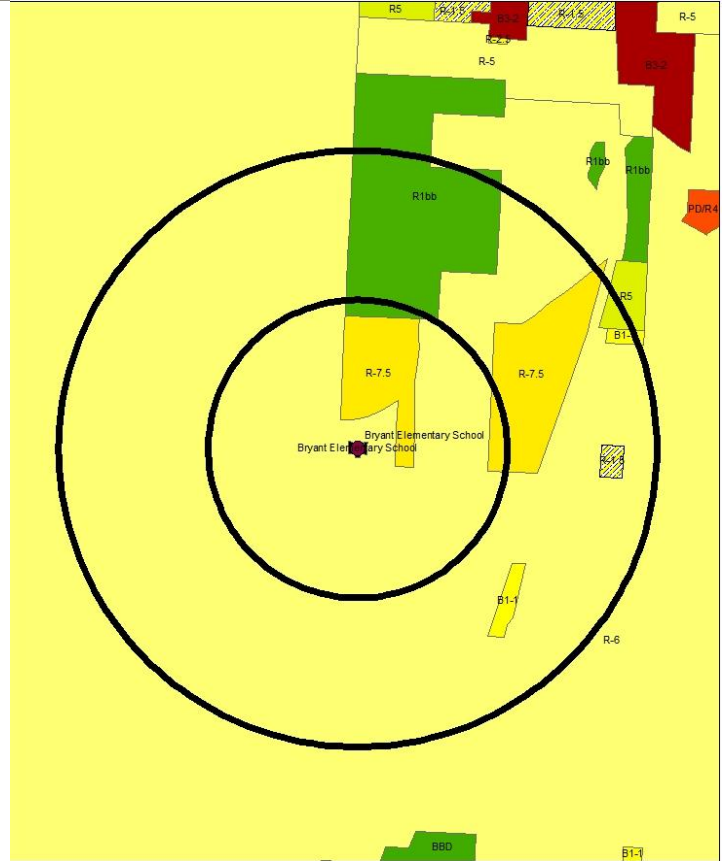
- Commercial
- Demolition

319 Westover Road



Current Land Use Map

Kansas City Missouri 64113

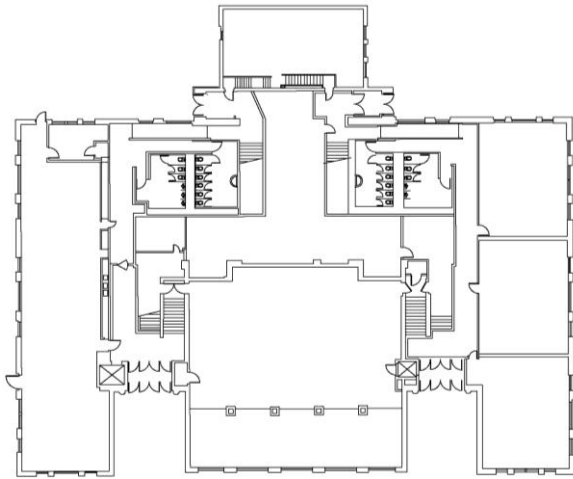


Zoning Map

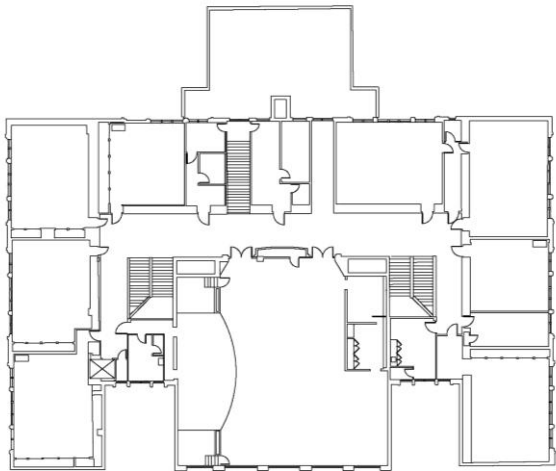
Aerial View: Bryant



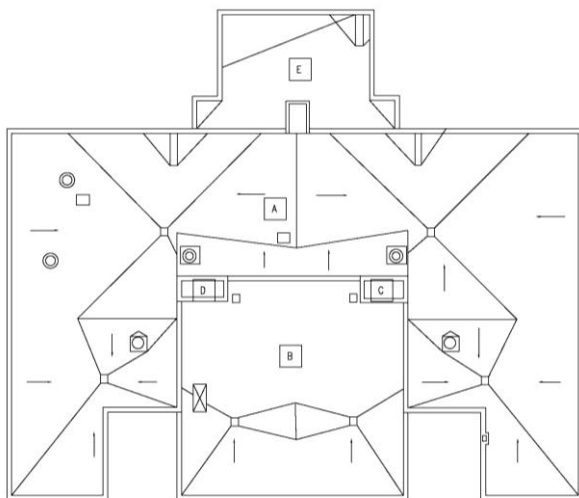
Floor Plans:



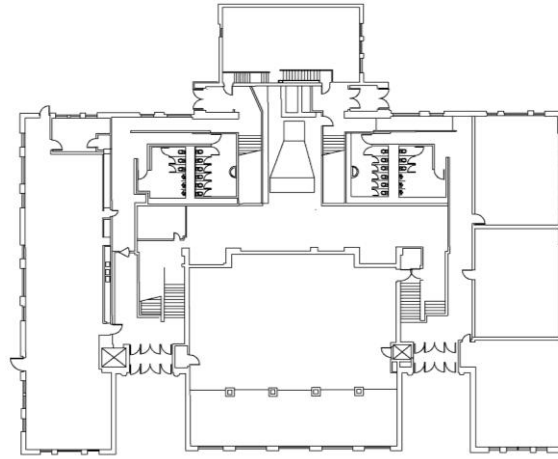
Basement Floor



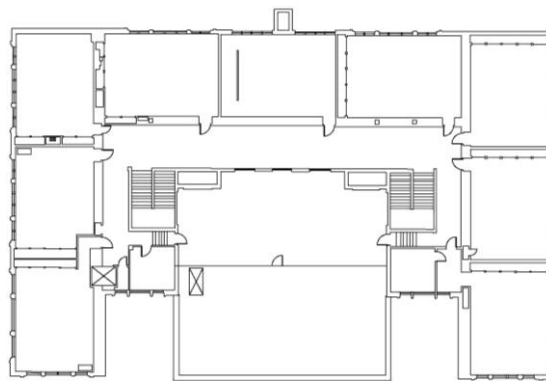
Second Floor



Roof Plan



First Floor



Third Floor

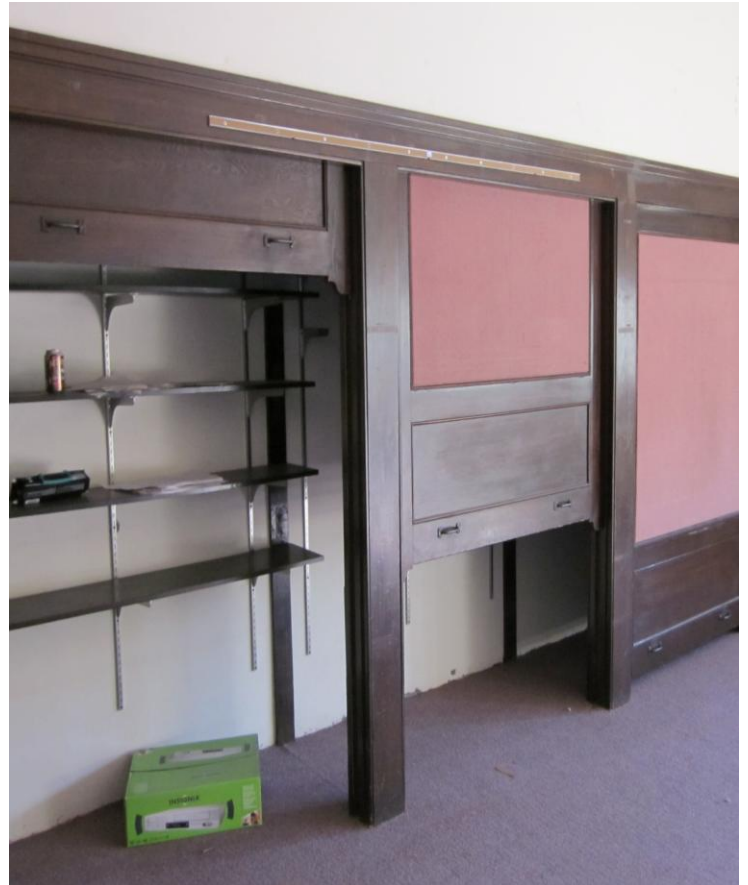
Final Recommendations & Community Priorities



Exterior Photograph



Exterior Photograph



Interior Photograph