

Blenheim

2411 E. 70th Terrace

Kansas City, Missouri 64132

Historical Brief

Architect:

Charles A. Smith

Architectural Style:

Moorish Revival

Year Built:

1924-1927-1930-1932-1996

Designation:

Eligible

Site Overview

Acreage:

3.5 acres

Square Footage:

67,760 square feet

Number of Floors:

4 floors

Neighborhood:

Tri-Blenheim

Zoning:

R-5, B-3.2

Deed Restrictions:

TBD

Site Details

Closed in 2009

22 classrooms/ 445 seat capacity

Partial A/C

2 low pressure steam boilers

Aluminum windows

with single layer glazing

Water infiltration/water damage

Auditorium

Gymnasium

Cafeteria

Elevator

Cost Management

Utility Costs (as an Open Facility):

\$6,500/month



Draft Reuse Assessment

Condition Rating: 3 out of 5



Historic Rating: 3 out of 5



Reuse Potential Rating:

Med

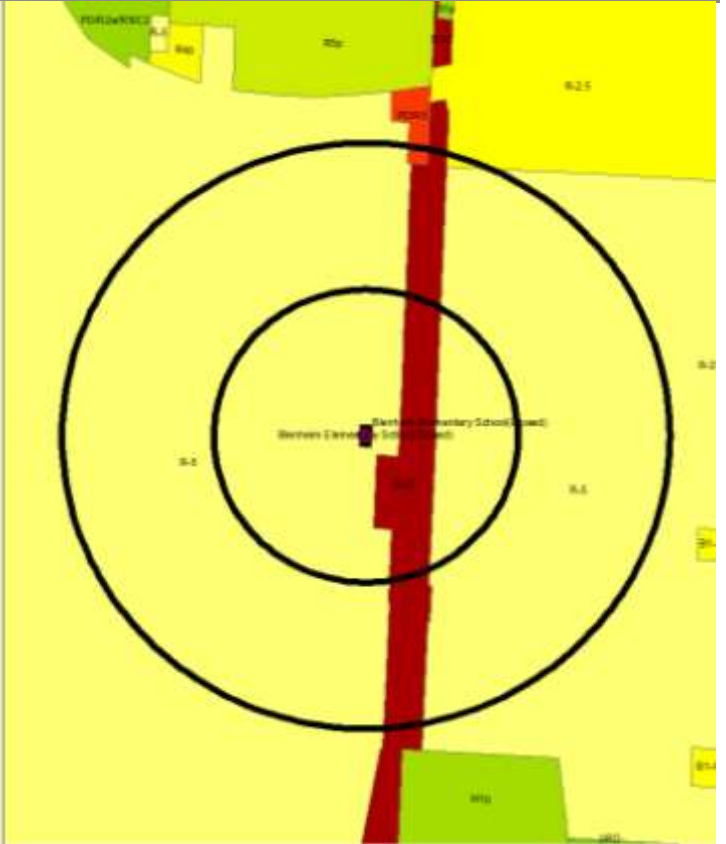
- Mixed Use
 - Residential + Social Services
 - Multi-tenant
- Residential
- Community/Social Services
- Education (Public, Elementary)

Low

- Commercial



Current Land Use Map

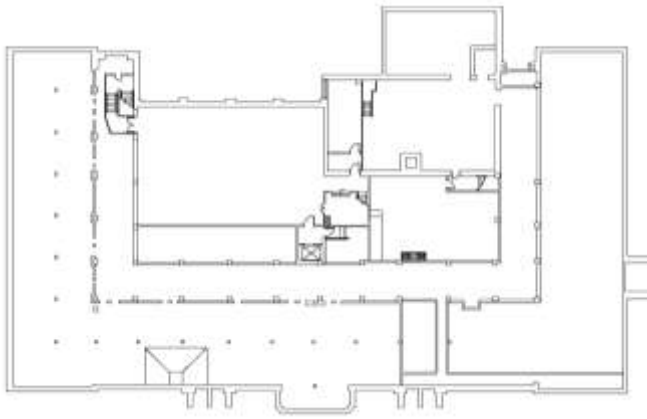


Zoning Map

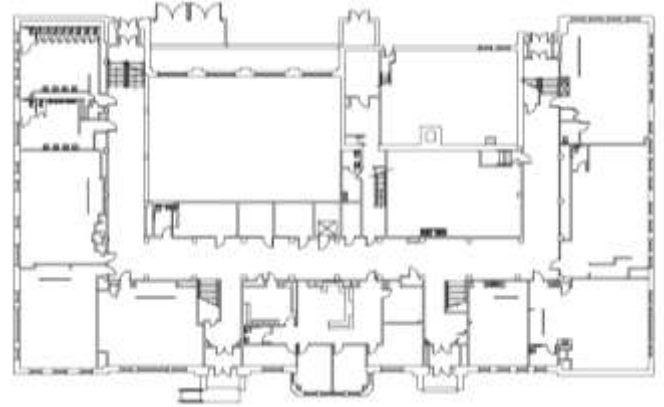
Aerial View: Blenheim



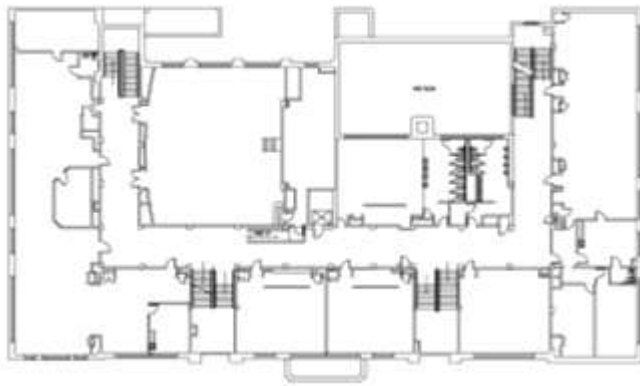
Floor Basement Floor



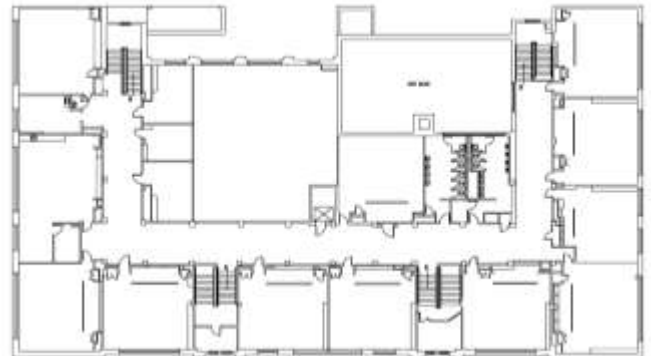
Floor Ground Floor



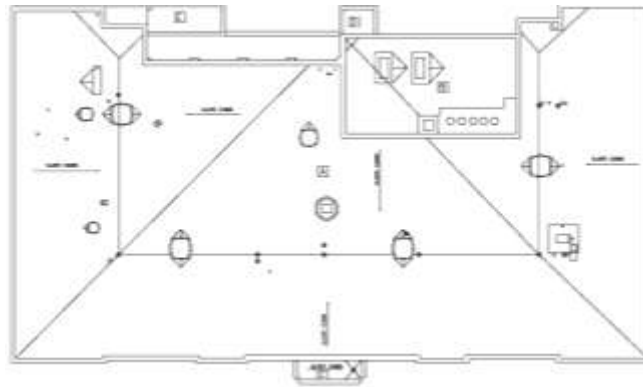
Floor First Floor



Floor Second Floor



Roof Plan



North →

Final Recommendations & Community Priorities



Interior Photograph
#1



Interior Photograph



Interior Photograph