

# Bingham

7618 Wyandotte Street

Kansas City, Missouri 64114

## Historical Brief

**Architect:**

Kivett, Myers & McCallum

**Architectural Style:**

Modern

**Year Built:**

1960

**Designation:**

Eligible

## Site Overview

**Acreage:**

7.57 acres

**Square Footage:**

101,640 square feet

**Number of Floors:**

3 floors

**Neighborhood:**

Tower Homes

**Zoning:**

R-2.5/M1-5

**Deed Restrictions:**

TBD



## Site Details

Closed in 2001

Served as district's warehouse

Auditorium

Gymnasium

Cafeteria

Elevator

## Cost Management

**Utility Costs:**

\$9,600/month (FY09-10 avg)

**Appraisal/Fair Market Value:**

\$ 3.2 million (2008)

## Draft Reuse Assessment

**Condition Rating:** 3 out of 5



**Historic Rating:** 5 out of 5



**Reuse Potential Rating:**

**High**

- Demolition + Redevelopment
- Mixed Use (Commercial + Residential)
- Commercial

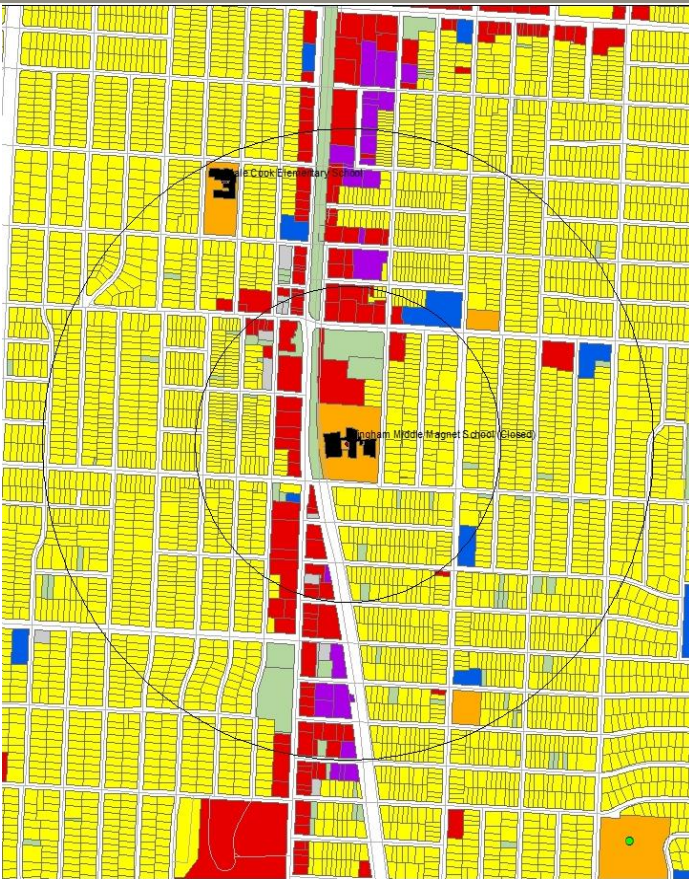
**Med**

- Residential
- Community Use/Open Space
  - Could also be as a complimentary use

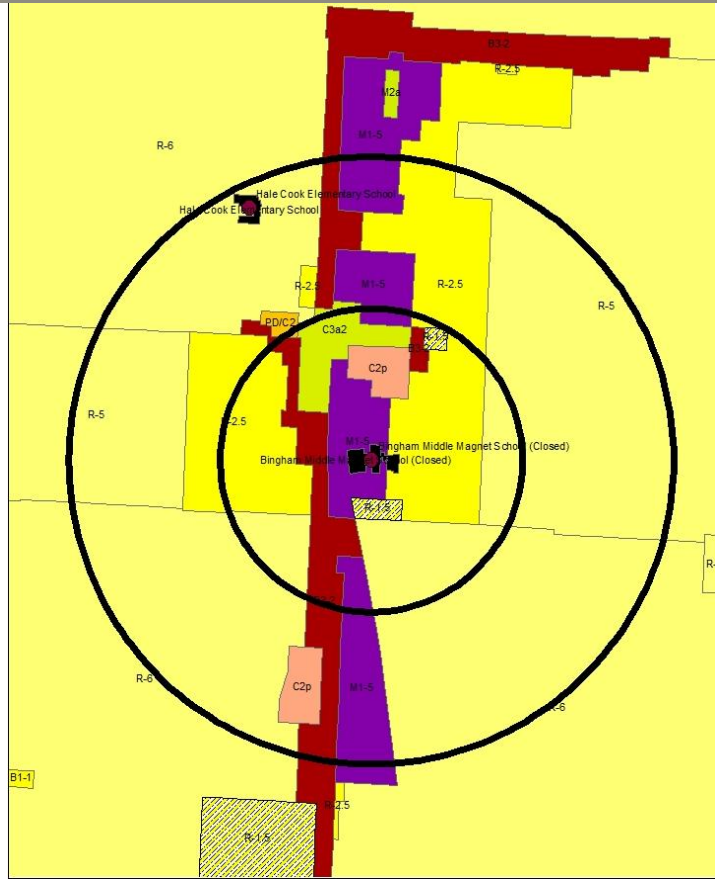
**Low**

- Education





Current Land Use Map



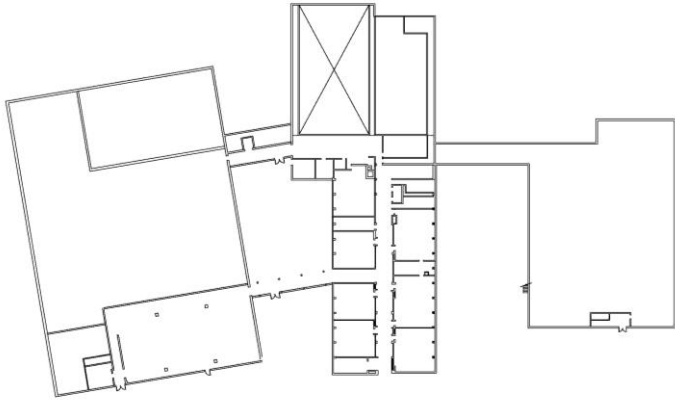
Zoning Map

Aerial View: Bingham



# Floor Plans:

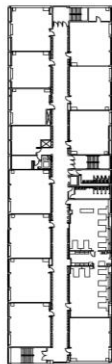
## Basement Floor



## First Floor



## Second Floor

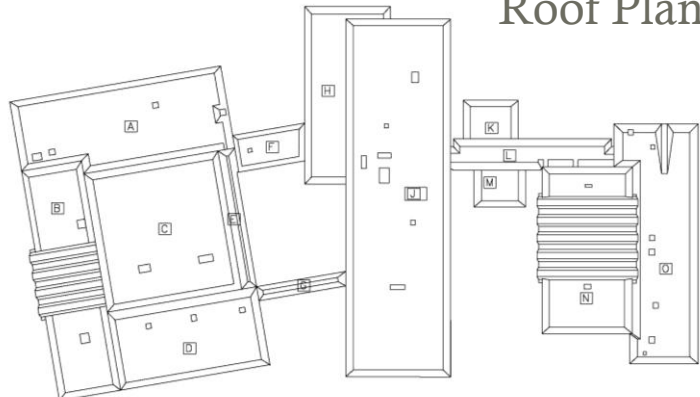


North



## Final Recommendations & Community Priorities

## Roof Plan





7618 Wyandotte Street

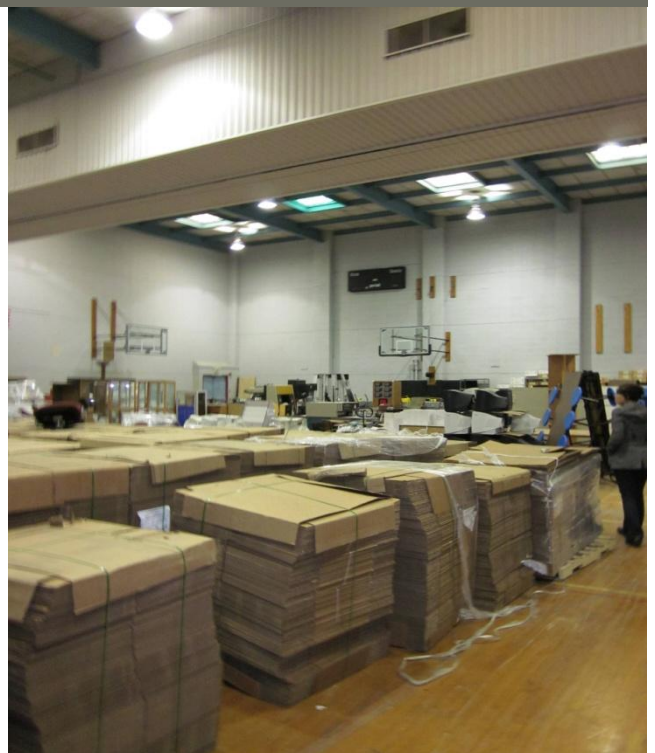
Kansas City, Missouri 64114



Exterior Photograph



Interior Photograph



Interior Photograph