

# Askew

2630 Topping Avenue

Kansas City, Missouri 64127

## Historical Brief

**Architect:**

Charles A. Smith

**Architectural Style:**

Gothic Elements

**Year Built:**

1923-1956-1968

**Designation:**

Eligible

## Site Overview

**Acreage:**

3.86 acres

**Square Footage:**

58,190 square feet

**Number of Floors:**

3 floors

**Neighborhood:**

Blue Valley

**Zoning:**

R-2.5

**Deed Restrictions:**

TBD



## Site Details

Closed in 2010

Capacity for 358 students

Partial A/C

2 steam boilers replaced  
in 1995

Roof repair (\$632,000 - 2009)

Auditorium

Gymnasium

Cafeteria

## Cost Management

**Utility Costs (as an Open Facility):**

\$6,850/month

## Draft Reuse Assessment

**Condition Rating:** 4 out of 5



**Historic Rating:** 4 out of 5



**Reuse Potential Rating:**

**Med**

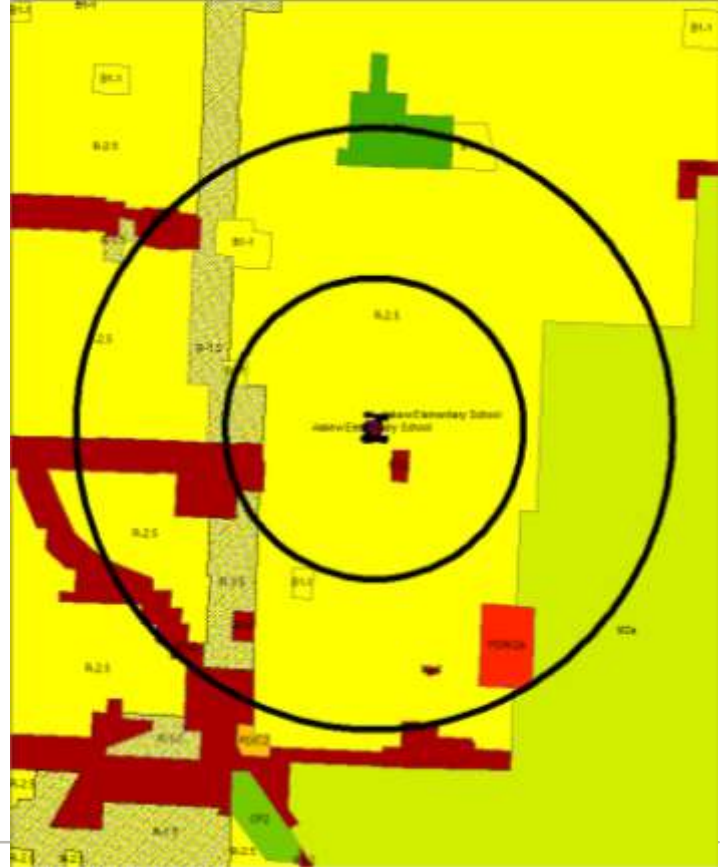
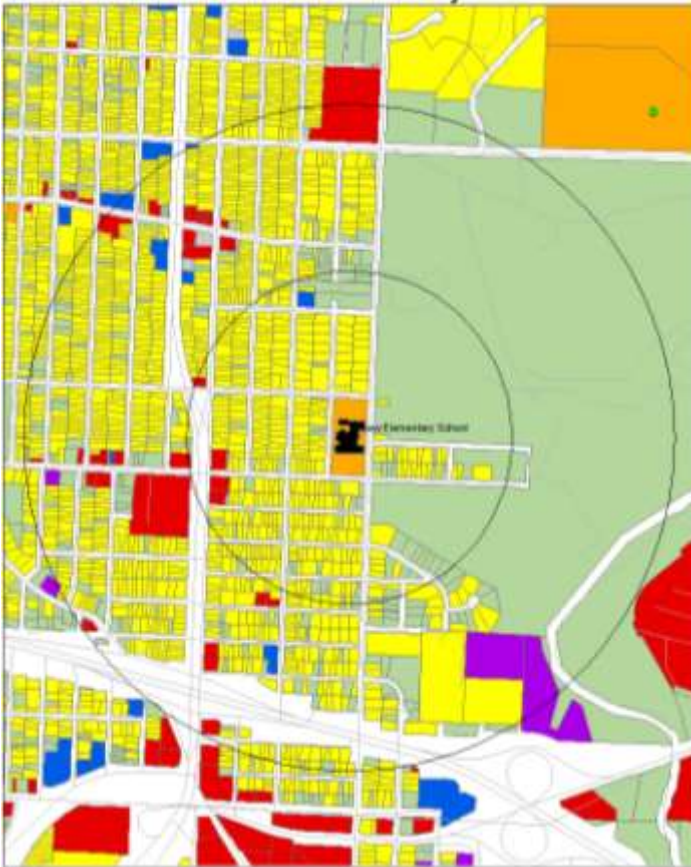
- Mixed-use
  - Community services/nonprofit offices
  - Residential + community services
- Multi-family residential

**Low**

- Education
- Retail/commercial uses
- Demolition

2630 Topping Avenue

Kansas City Missouri



Current Land Use Map

Zoning Map

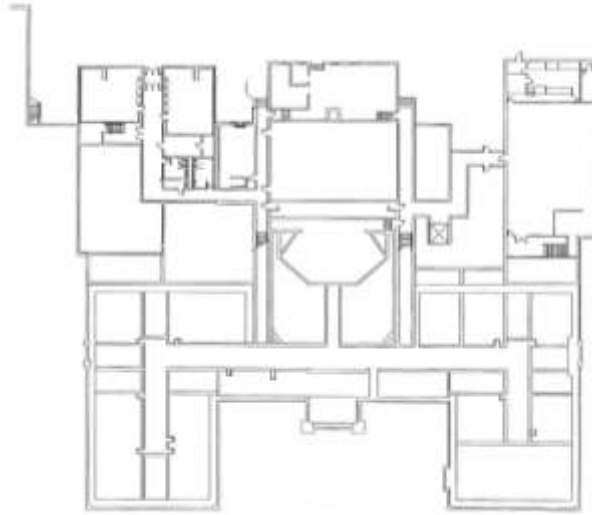
Aerial View: Askew



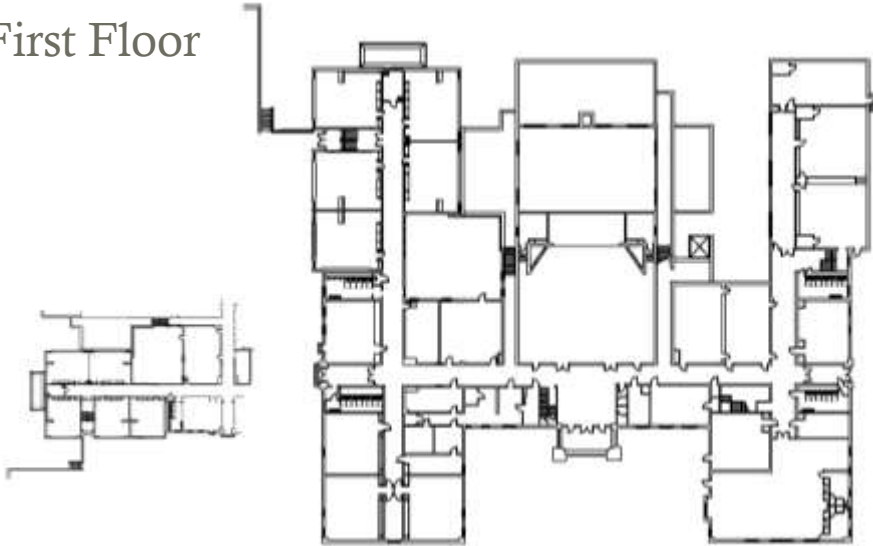
# Floor Plans:

## Ground Floor

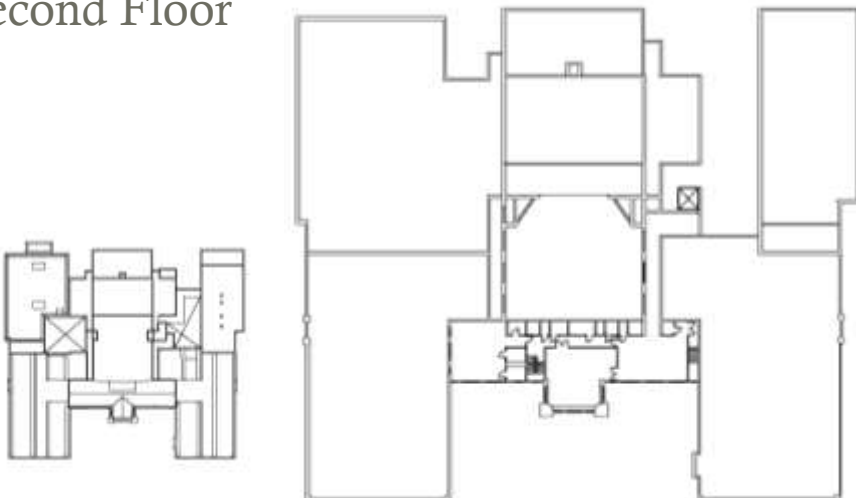
North →



## First Floor



## Second Floor



## Final Recommendations & Community Priorities



2630 Topping Avenue

Kansas City Missouri 64127



Exterior Photograph



Interior Photograph



Interior Photograph