

Los Alamitos High School

# MULTISTORY STEM BUILDING

August 2019





# MILESTONES

## Current Project Status

Construction of Phase I in Progress

Construction Documents in Review with the Division of the State Architect

Constructability Review Analysis in Progress

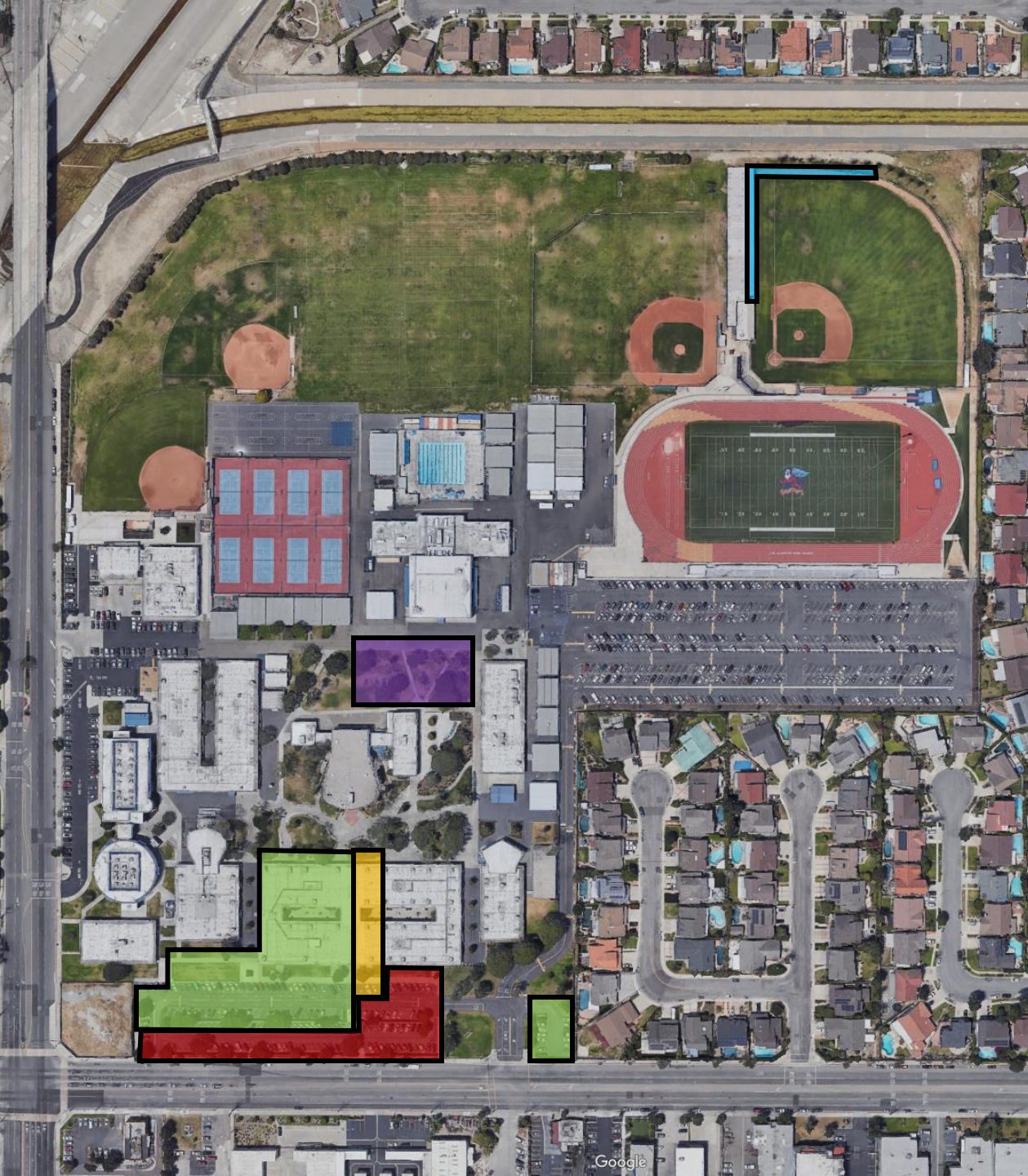
DSA  
Submission

DSA Approval

Phase I  
Construction

Phase II  
Construction





# PHASE I

## Scope of Work

Contractor Mobilization

Canopy Demolition

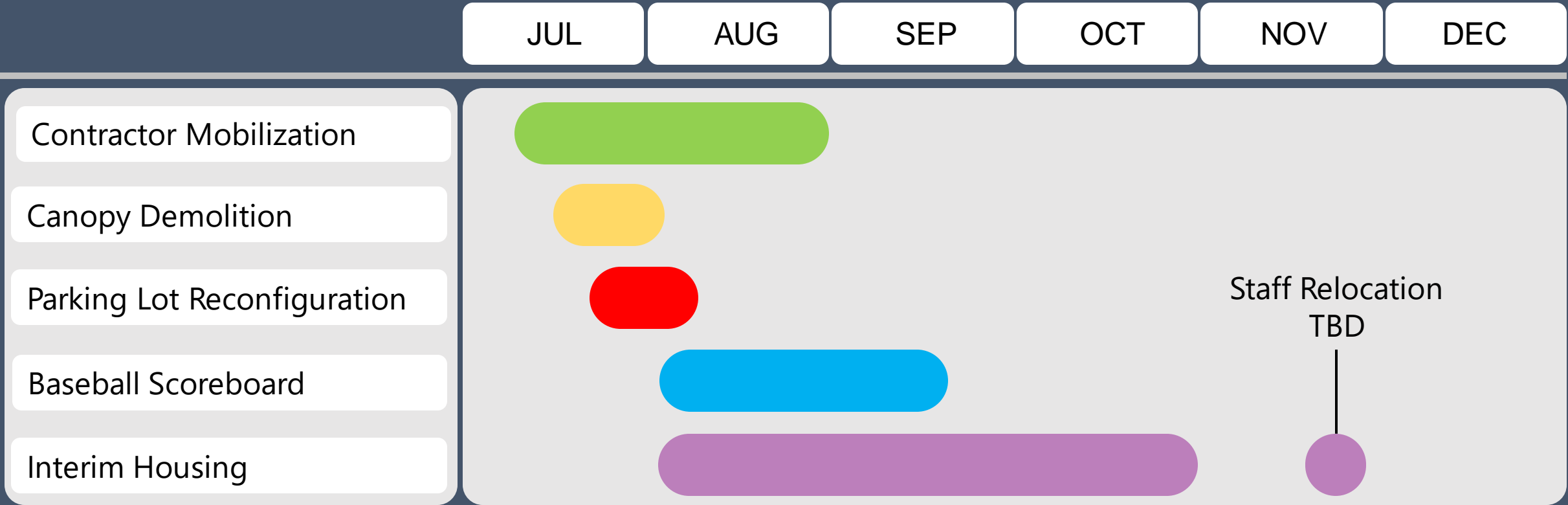
Parking Lot Reconfiguration

Baseball Scoreboard

Interim Housing

# PHASE I

## Construction Schedule





# DSA REVIEW AND APPROVAL

## Review Process

- Pre-Application Meeting
- Primary Areas Reviewed
  - Fire, Life, Safety
  - Structural
  - Access Compliance

## Review and Approval Milestones

- June 10, 2019 - Construction Documents Submitted
- September 15, 2019 - Initial Review Comments Anticipated
- November 1, 2019 - Response to Comments Anticipated
- December 1, 2019 - Approval of Construction Documents Anticipated
- January 2020 - Determine and Negotiate Guaranteed Maximum Price





# CONSTRUCTABILITY

A technique to review construction processes from start to finish during pre-construction phase. It is used to identify obstacles before a project is built to reduce or prevent errors, delays, and cost overruns.

## Focused Areas

- Site Verification
- Manufacturer Details and Input
- Product Quality and Installation
- Quality Assurance Measures
- Value Engineering
- Project Logistics
- Design Discipline Congruity
- Design Feasibility and Corrections

# CONSTRUCTABILITY

## Review Categories



### Building Utility Connections

- Plumbing, Storm Drain, Electrical, Data



### Building Substructure

- Soils Remediation, Footings, Foundations



### Vertical Building Shell

- Exterior and Interior Walls, Metal Panels, Brick Veneer, Windows



### Horizontal Building Shell

- Floor Slabs, Roof Structure, Soffits



### Plumbing and Fire Protection

- Fixtures, Piping



### Electrical

- Fixtures, Conduit, Outlets



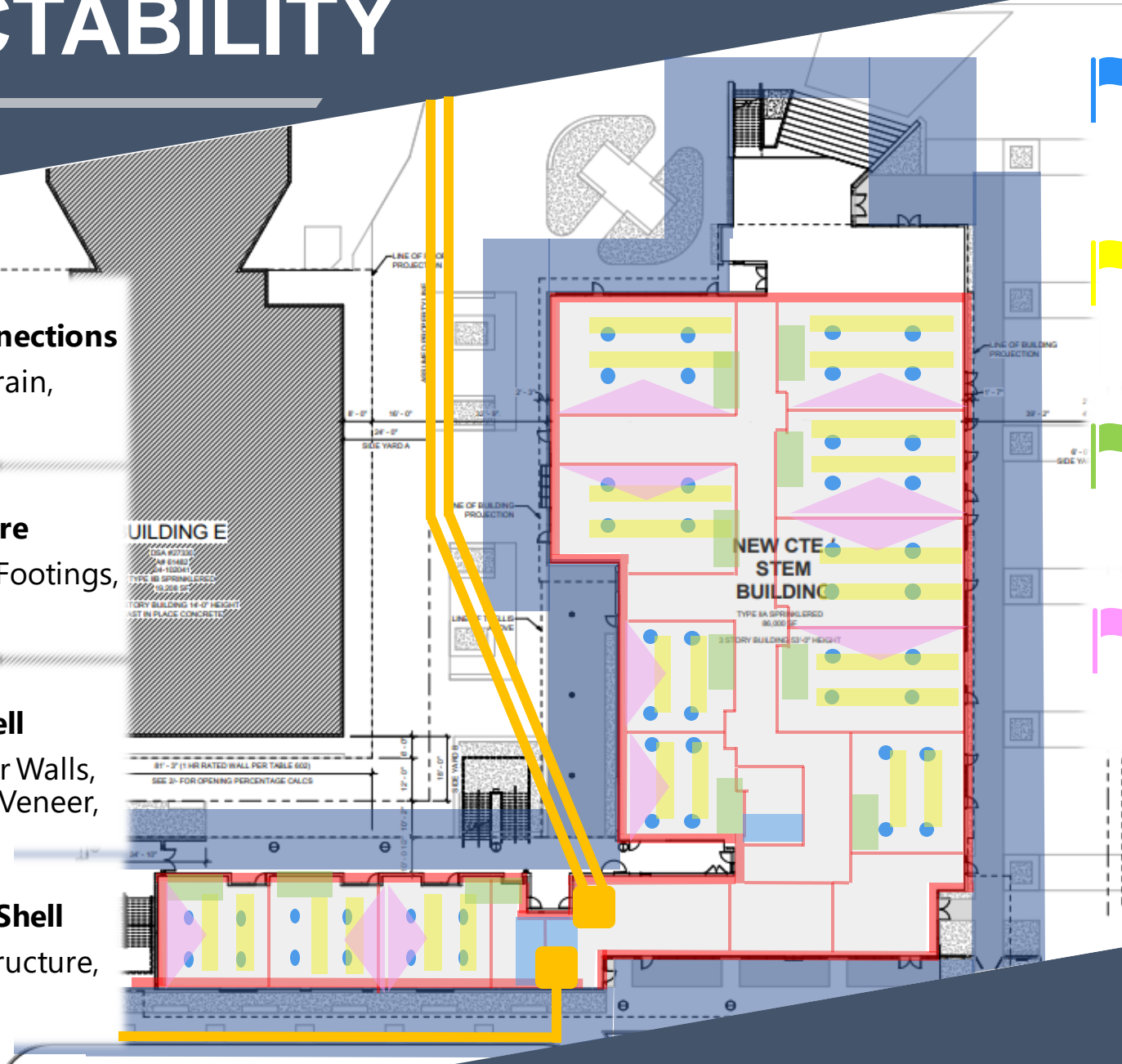
### HVAC

- Equipment, Registers, Ducting



### Data and Audio/Visual

- Equipment, Data Drops, Projectors, Displays





# CTE ROBOTICS LAB

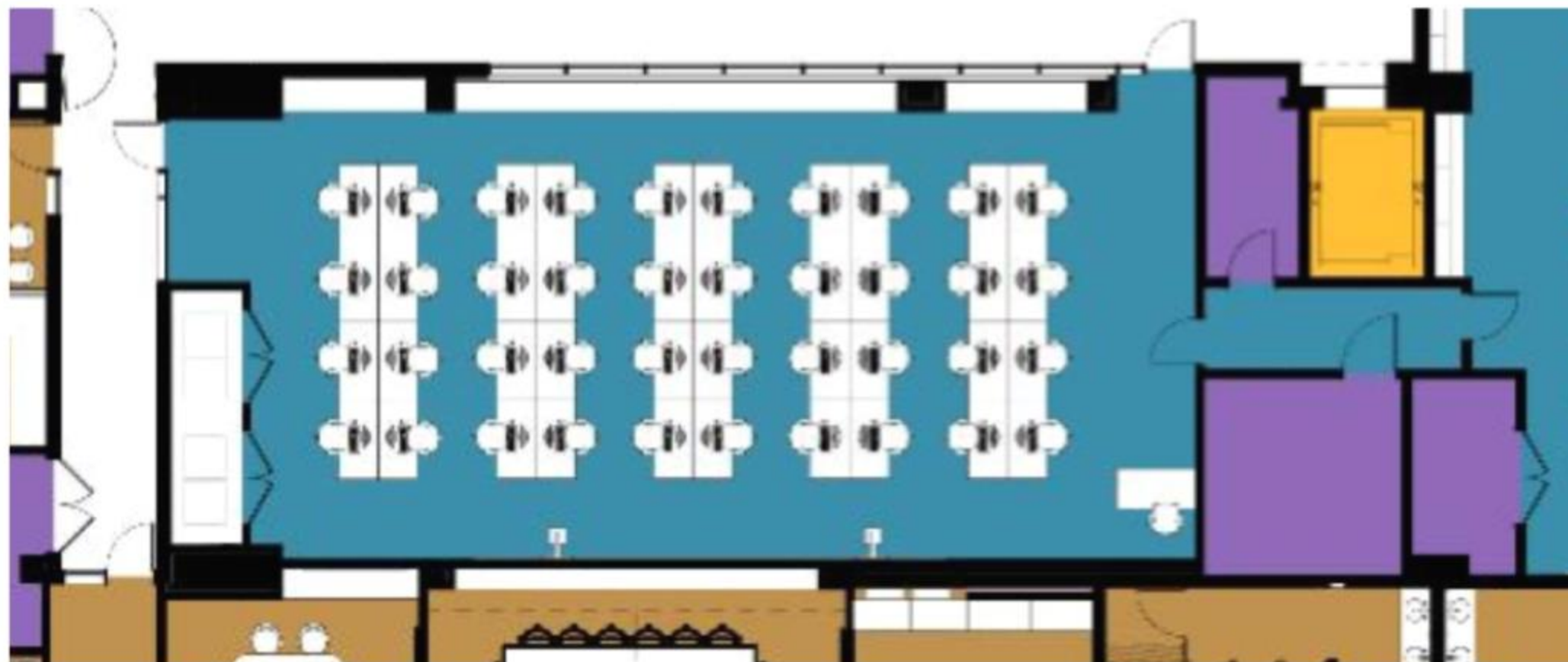
## Equipment

- HAAS Mini Mill
- Metal Laser Cutter
- CNC Router
- 3D Printer
- CNC Mill
- 80 Gallon Compressor
- 10 AMP 50' Cord Reel
- 8' Workbench





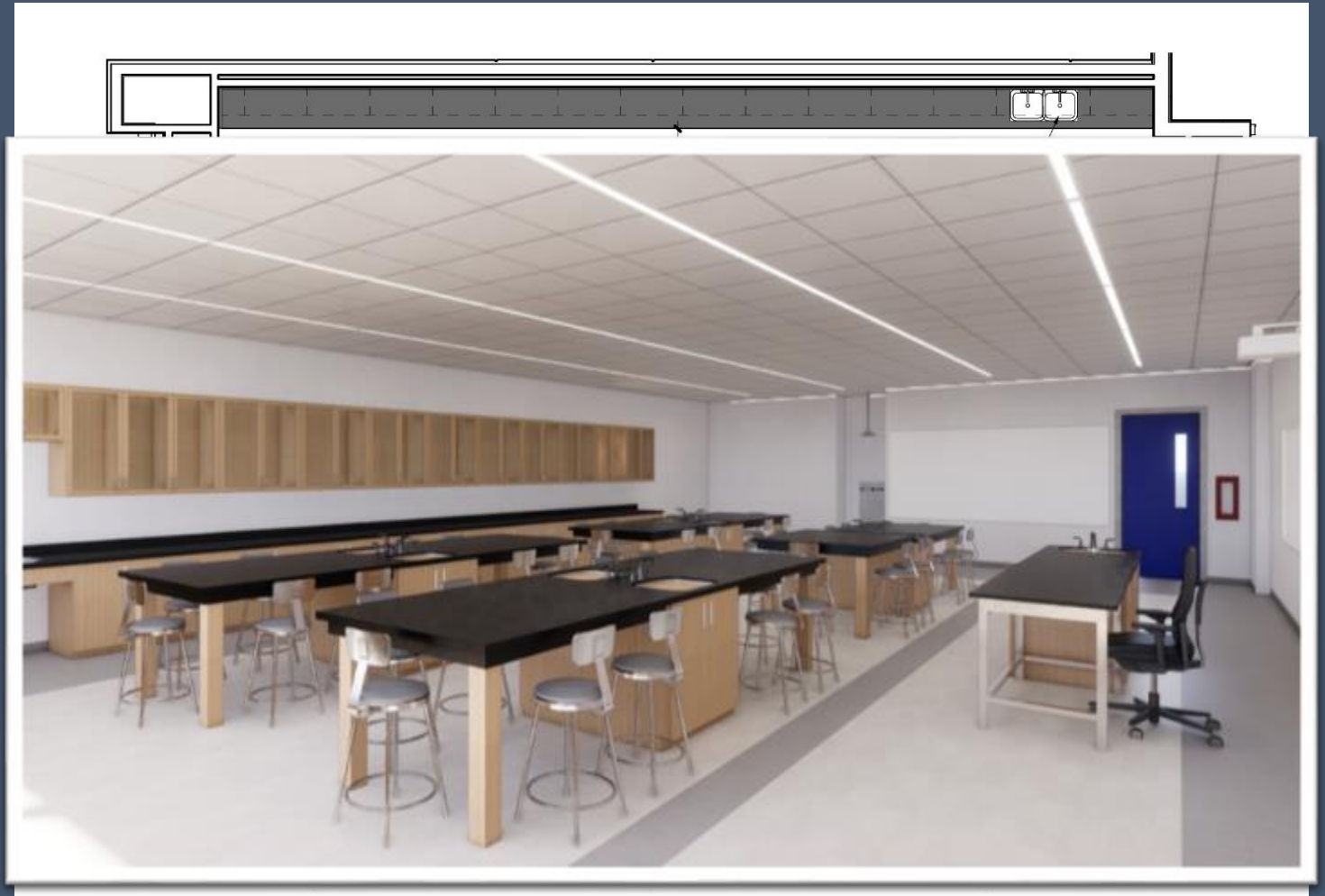
# CTE COMPUTER LAB



# UPDATED STEM CLASSROOM LAYOUT

## Lab Station Locations

- Relocated from peninsulas to islands in the center of the classroom
- (8) Total Lab Spaces
- Teaching Island





# Questions and Comments

---

