



# Facilities and Measure G Update

Board Workshop

January 21, 2020

Presented By: CJ Knowland  
Director, Facilities, Maintenance, Operations, and Transportation

# Los Alamitos High School - Multistory STEM Building

Phase I – Interim Housing and Demolition is complete!

Contract and Guaranteed Maximum Price procurement is ongoing and we are proactively having subcontractors bid on the project to assist in identifying items in the construction documents that require further clarification.

- 40+ subcontractors are actively reviewing, providing preliminary proposals, and submitting pre-bid requests for clarification
- Final estimate this week

Division of the State Architect review is ongoing pending further coordination with California Geological Survey

- Meetings are being held twice a week with DSA and CGS for the rammed aggregate pier system.
- Expected to have final approval early February followed by the GMP Bid

# Los Alamitos High School - Multistory STEM Building

## Initial Construction Work Activities and Impacts

Bidding and Award – Bidding will be done at an optimal time in the work year.

Earthwork and Site Grading – Contractor will be excavating 10ft below the building footprint and will prepare initial utility underground layout.

Rammed Aggregate Pier System – 200+ rammed aggregate piers are to be drilled and compacted throughout the site.

Placement of Structural Steel – Cranes and heavy equipment is expected to arrive as early as Summer of 2020 and will continue into the school year.

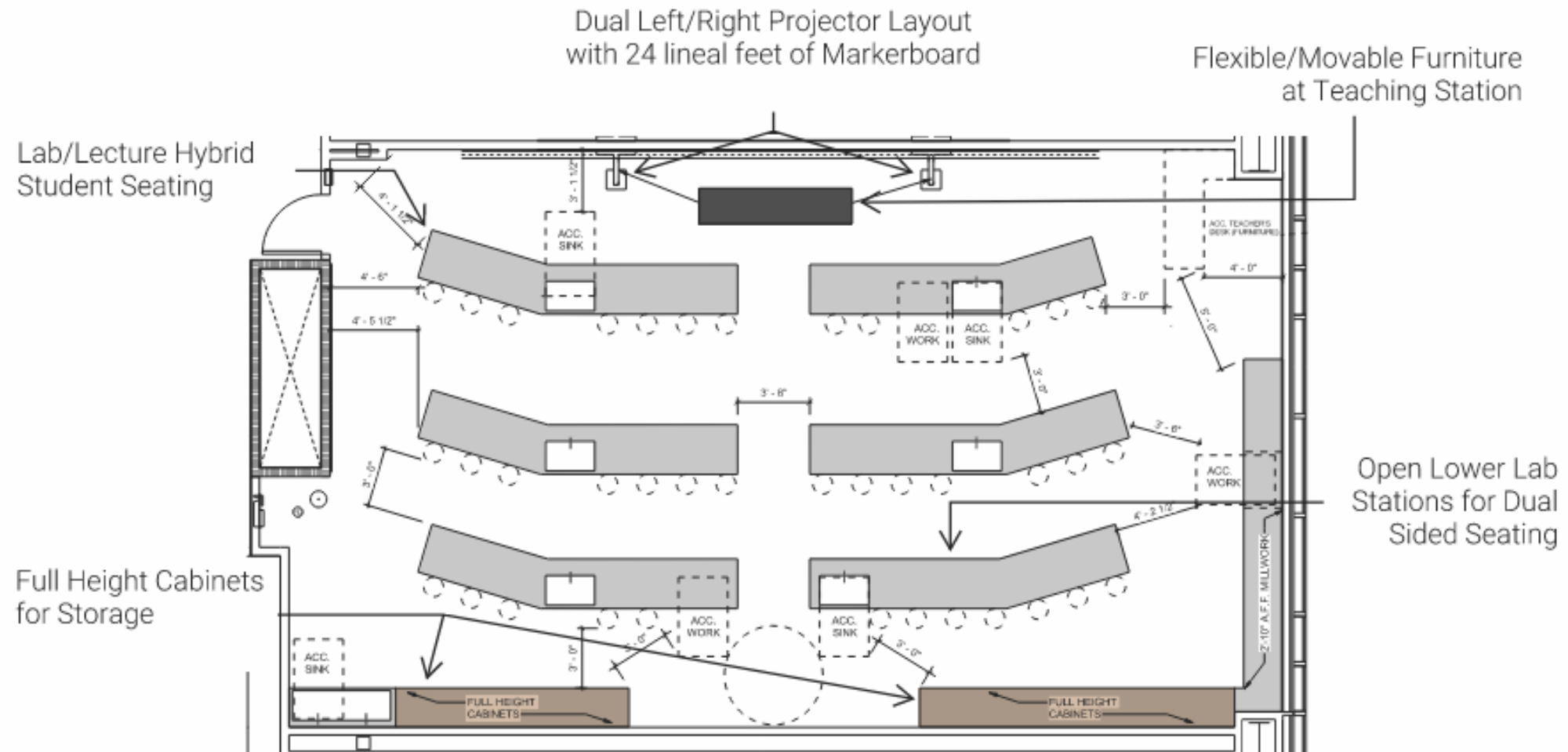
Construction Parking – The contractor will require a minimum of 80 parking spots for construction activities in the 2020-21 school year and this is currently being coordinated with the site. We will be recovering parking from the completion of the infrastructure project.







# Classroom Lab Floor Plan



## Pool Shell and Earthwork

Earthwork subcontractor supplemented by Hamel Contracting and a bond release of stop notice was received to not delay payments

Pool utilities and subsurface soil work complete  
- Pool drainage systems installed

Contractor scheduled to place rebar next week for the pool floor base followed by concrete for the pool shell.

*Project Remains on Budget* with Change Order #01 being prepared with a total of approximately \$5,000.00 and followed by Change Order #02 for approximately (\$18,500.00).

## Pool Equipment and Classroom Building

Building perimeter, masonry walls being installed

Additional door placed at interior side of the campus

The contractor continues to perform engineered fill mixing and compaction around the building.

Future classroom slated to be pilot room for Multistory furniture

*Project Remains on Schedule* for Completion at the Beginning of Summer 2020!



Project was bid and the lowest responsive bidder submitted a total of \$88,000.00 for the project

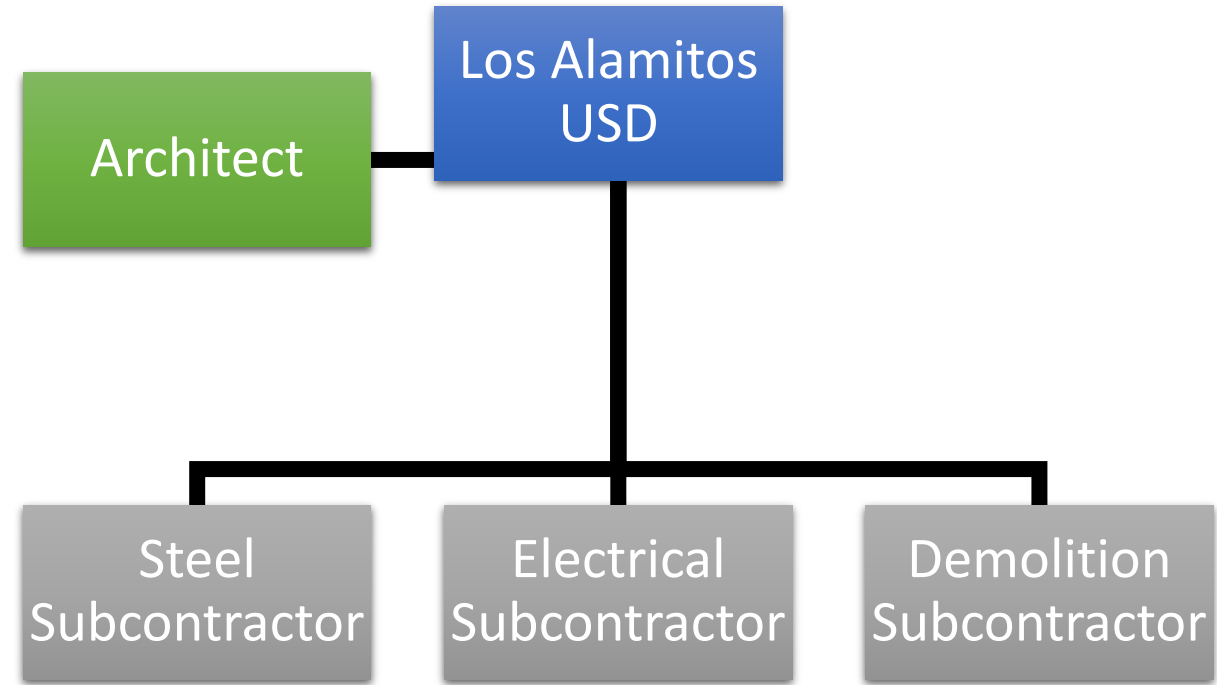
- Does not include the Scoreboard

Post-Bid Interview conducted with bidder to review scope and confirm the scope and the amount

Second proposal received from Erickson-Hall at \$85,000.00.

Recommendation to reject all bids and multi-prime the project utilizing District staff to manage and perform the painting work and receive bids for the following scopes:

- Steel
- Electrical
- Demolition



Los Alamitos High School  
Softball Scoreboard



# Modular Restroom Buildings

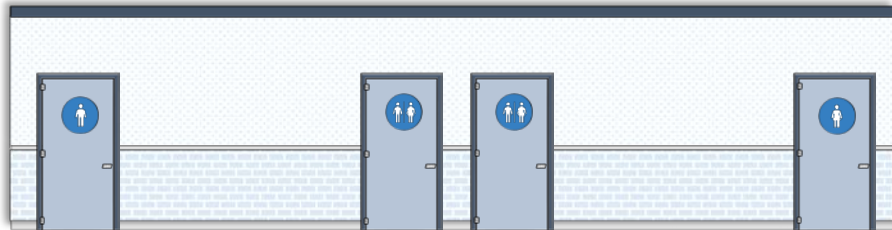
## Hopkinson Elementary School

## Los Alamitos Elementary School

Geotechnical Reports (Soils Reports) are in review with the California Geological Survey (CGS)

Division of the State Architect approval anticipated for March

Additional progress drawings have been requested from the Architect to verify progress and provide final review



Parking Lot layout drawings have been received and are currently being reviewed to be incorporated into the asphalt deferred maintenance summer project

Site has been walked with multiple subcontractors to prepare bid documents for advertisement.



# McGaugh Elementary School Playground Replacement

First Playground is complete and our District Grounds is re-seeding the surrounding grass areas

Concerns regarding the curvature of the slide and the slope of the incline rock climber are being reviewed with the contractor and the manufacturer

The equipment is designed for ages 5-12

Remaining playground scheduled to complete by the end of January



Questions?

Comments?

*Thank You!*